



WHO / UNICEF

**Joint Monitoring Programme
for Water Supply and Sanitation**

Coverage Estimates

Improved Drinking Water

Updated in June 2006

Chile

Urban and Rural Water - Chile

Estimate based on Census 91

PAHO 1998		
WATER	Urban	Rural
Servicio por redes publico	99.1	65.7
No other details given so below percentage will be an underestimation due to lack of data on other improved sources		
TOTAL		
Access to improved drinking water source	99%	66%

Source: Evaluacion global de los servicios de agua potable y saneamiento, OMS/OPS-UNICEF, diciembre de 1999

Survey

CASEN 1998		
WATER	Urban	Rural
Red publica con llave dentro de la vivienda	95.2	23.3
Red publica con llave de la vivienda, pero dentro del sitio	3.6	12.1
Red publica sin sistema de distribucion	0.4	1.8
Pozo o noria (chain pump)	0.4	37.5
Rio, vertiente o estero	0.0	21.0
Otro	0.3	4.4
TOTAL	99.9	100.1
50%	0.2	18.75
Access to improved drinking water source	99%	56%
% House connections	99%	35%

Source: Desigualdades en el acceso, uso y gasto con el agua potable en America Latina y el Caribe, Chile, PAHO, Feb 2001, table prepared by PAHO, using CASEN98

Census

CENSUS 1991*		
(Population in thousands)		
WATER	Urban	Rural
Household Connection	10'705	568
Hand-dug Well	120	1'010
River, stream, estero	51	529
Other	74	38
protected wells estimated at 50 % of all wells	60	505
Total Population Served	10'765	1'073
TOTAL	10'950	2'145
Access to improved drinking water source	98%	50%
% House connections	98%	26%

Source: National Census, Chile, c.1991.

* Date estimated from population given.

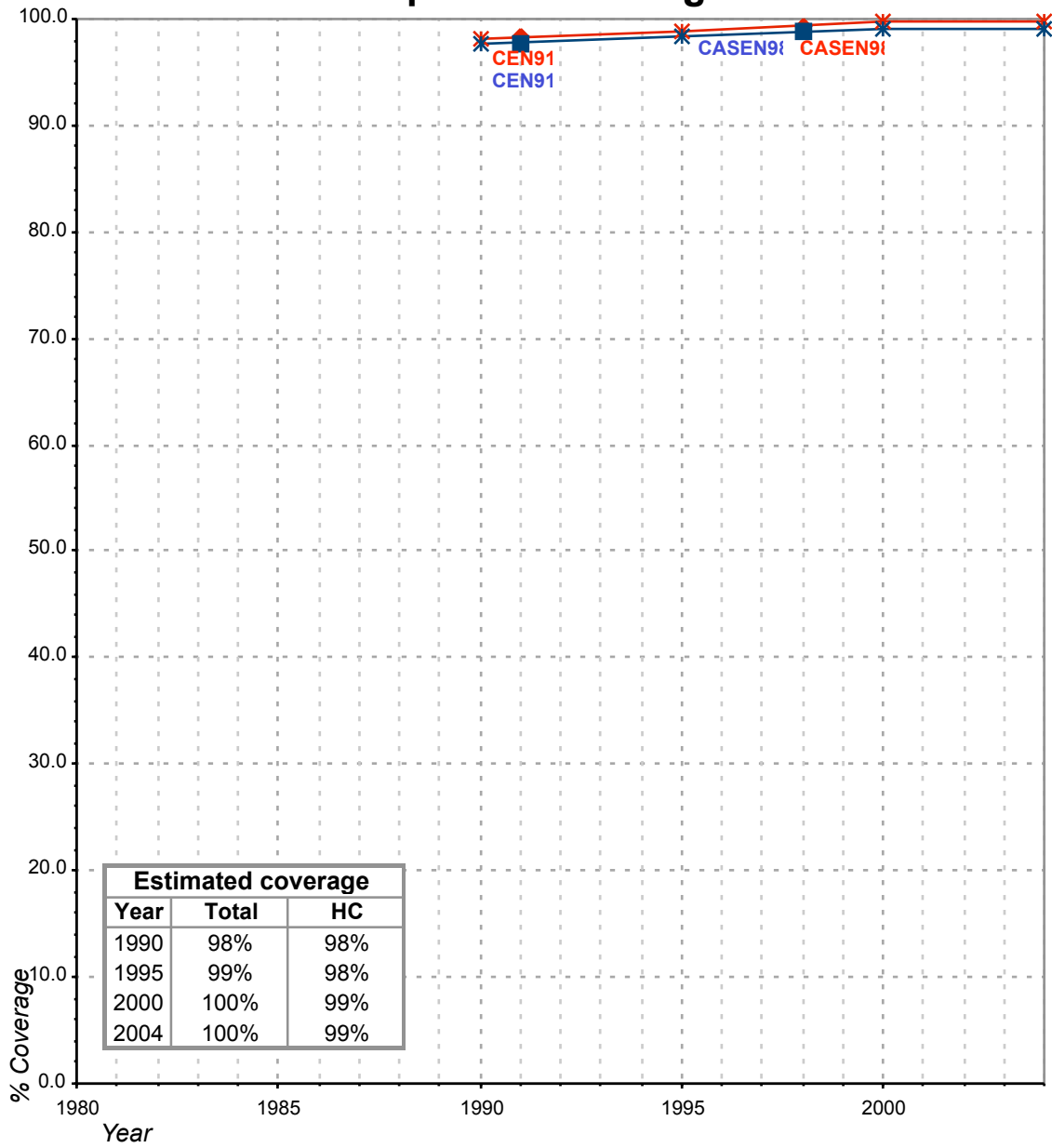
Estimate

FORM-6/WHO 1999		
(Population in thousands)		
WATER	Urban	Rural
Population served with household connection	12'112	995
Population without household connection but with reasonable access to a public water point	496	448
Total population served	12'608	1'443
Total population unserved	115	754
Total population	12'723	2'197
Access to improved drinking water source	99%	66%
% House connections	95%	45%

Source: Global Water Supply and Sanitation Assessment 2000. Water Supply and Sanitation Sector Questionnaire - 1999. (Form 6 sent to WHO)

Chile			DRINKING WATER							
			URBAN				RURAL			
			HC		Total		HC		Total	
Source	Code	Year	Used for estimates	Not used for estimates	Used for estimates	Not used for estimates	Used for estimates	Not used for estimates	Used for estimates	Not used for estimates
The International Drinking Water Supply and Sanitation Decade. Review of National Baseline Data (as at December 1980). WHO 1984	WHO80	1980		93.0		100.0				17.0
The International Drinking Water Supply and Sanitation Decade. Review of National Progress (as at December 1983). WHO 1986.	WHO83	1983		95.0		100.0				18.0
The International Drinking Water Supply and Sanitation Decade. Review of Mid-Decade Progress (as at December 1985). WHO 1987.	WHO85	1985		94.0		98.0				29.0
The International Drinking Water Supply and Sanitation Decade. Review of National Progress (as at December 1988). WHO 1990.	WHO88	1988		98.0		100.0				21.0
Assessment 2000. Water Supply and Sanitation Sector Questionnaire - 1999. (Form 4 sent to WHO)	CEN91	1991	97.8		98.3		26.5		50.0	
Evaluacion global de los servicios de agua potable y saneamiento, OMS/OPS-UNICEF, diciembre de 1999	OMS91	1991								
Water Supply and Sanitation Sector Monitoring Report 1993 (Sector Status as of 31 December 1991)	JMP93	1991				100.0				100.0
Water Supply and Sanitation Sector Monitoring Report - 1996. Sector Status as of 31 December 1994. WHO/UNICEF 1996.	JMP96	1994				94.0				37.0
Desigualdades en el acceso, uso y gasto con el agua potable en America Latina y el Caribe, Chile, PAHO, Feb 2000, using CASEN98	CASEN98	1998	98.8		99.4		35.4		56.0	
Global Water Supply and Sanitation Assessment 2000. Water Supply and Sanitation Sector Questionnaire - 1999. (Form 6 sent to WHO)	JMP99	1998		95.2		99.0		45.3		66.0

Chile - urban - Access to improved drinking water sources



Estimated coverage		
Year	Total	HC
1990	98%	98%
1995	99%	98%
2000	100%	99%
2004	100%	99%

Total improved access

◆ Used for estimates

—*— Estimates

Household connections (HC)

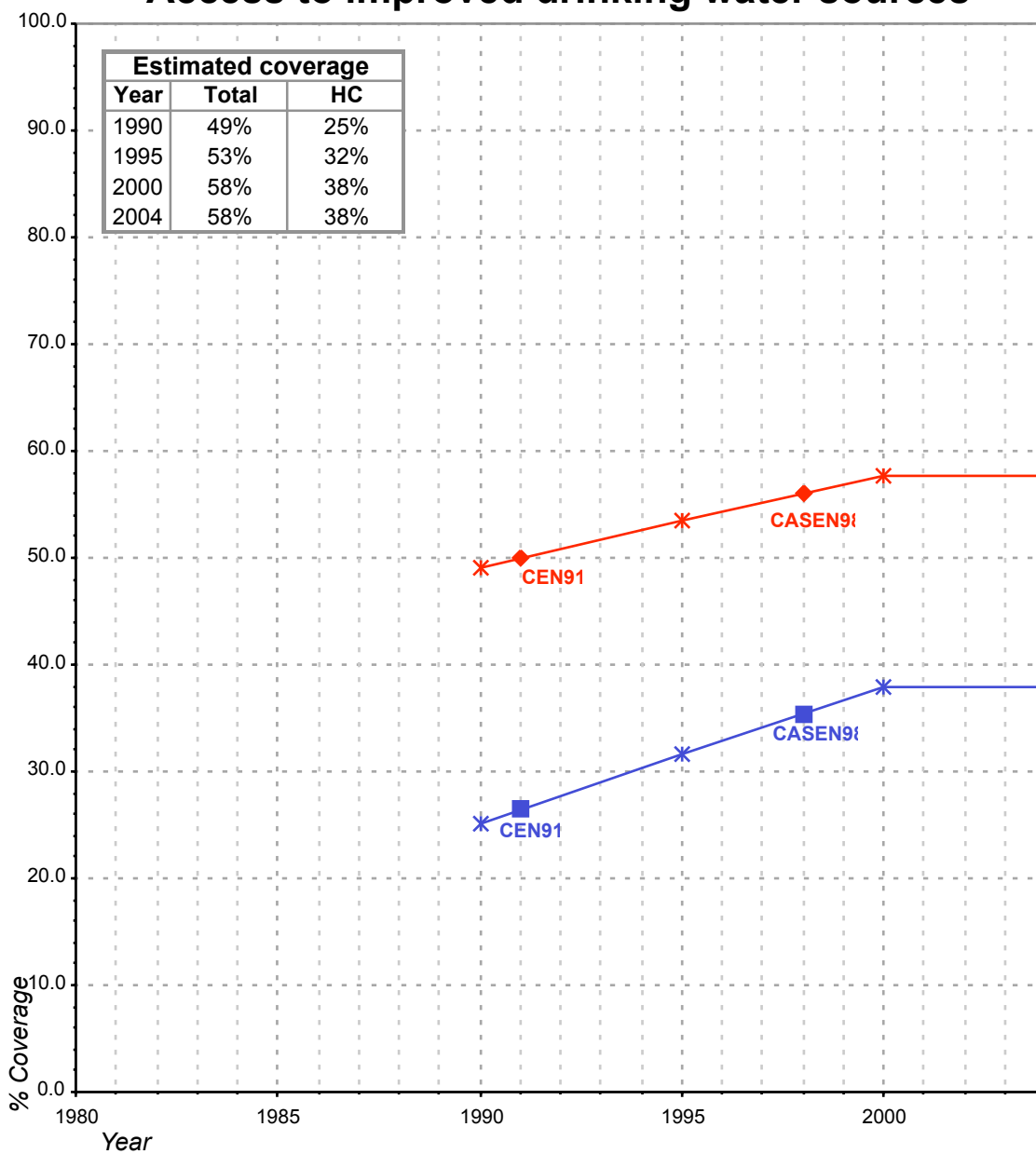
■ Used for estimates

—*— Estimates

Total access :

Household connections :

Chile - rural - Access to improved drinking water sources



Total improved access

Household connections (HC)

◆ Used for estimates

■ Used for estimates

✱ Estimates

✱ Estimates

Total access :

Household connections :