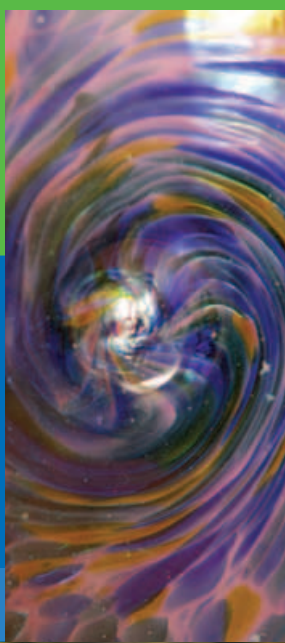


visiting Guelph and Wellington

a magazine for experiences and discoveries



Feel the energy!

2006



Visit **Guelph**
AND
Wellington County

visitguelphwellington.ca

things to see and do

discover our 

With all there is to see and do in both Guelph and Wellington County, the best way to start is to get out and about, exploring our community by getting right in to it. There is truly something for everyone here. Find out why the University of Guelph has become one of the most sought after universities in the country, or slip back in time in one of our many heritage sites. Take a drive through the countryside and enjoy some fun on the farm. Maybe you came here to do very little, to just relax and let someone else take care of you. We've got places for that too. Whatever you enjoy, this is the place to be.

secrets

The expansive campus of the University of Guelph is growing along with the student population, earning a reputation as one of Canada's progressive academic institutions. The campus is alive with activity, from sporting events to musical performances. Art lovers will enjoy a tour through the Macdonald Stewart Art Centre, where fine art is always on display. Nature enthusiasts will be in awe of The Arboretum, spanning 165 hectares and featuring over one hundred species of birds, and 1,700 types of trees and shrubs. With over eight kilometres of trails, you'll see a great range of wildlife in the beauty of nature, in a protected research facility. Come see why the University of Guelph is the spirit of the city it calls home.

If you like The Arboretum you'll love our other nature attractions where the best way to discover nature is to immerse yourself in it. Whether that means standing in a room full of beautiful butterflies, or wandering through a corn maze beneath a star-lit sky, our conservation areas and rural sites are an adventure for all ages.

Preserving our environment is equally as important as preserving our heritage, as you'll see when you stroll about our historic downtowns, with their century-old buildings and amazing streetscapes. History matters here, and we have amazing museums and heritage sites that strive to bring our past to life with exciting exhibits and activities planned year round. Search the roots of your family tree in our impressive archives, or tour through the museums and heritage sites across Guelph and Wellington County, and you'll see that we have much to be proud of.

From here to there and all points in between, you'll find plenty to do and see right across our region. All you have to decide is where to start. Go at your own pace and be sure to enjoy our place. 🌸

A Destination for All Seasons



Wedding & Conference Facilities
Nature Trails - Bird Watching
Workshops & Special Events
Dinner Theatre



THEATRE IN THE TREES
The Arboretum & University of Guelph

Food, Friends and Frivolity

Enjoy a scrumptious hot & cold buffet & light-hearted comedy

WEEKENDS: NOVEMBER, DECEMBER, FEBRUARY, MARCH & APRIL

\$56.00 / PERSON INCLUSIVE

For tickets call 519-824-4120 ext. 54110

Open Dawn to Dusk For booking information,
YEAR-ROUND call the Arboretum:

Free Admission 519-824-4120 ext. 54110

ENJOY YOUR VISIT! www.uoguelph.ca/arboretum

Wings OF Paradise[®]

BUTTERFLY CONSERVATORY

STROLL among hundreds of butterflies

DISCOVER incredible insect collections

VIEW an observational bee hive

RELAX over lunch in the Café

SPECTACULAR BUTTERFLIES
IN A TROPICAL GARDEN

OPEN YEAR ROUND
10-5 DAILY

2500 Kossuth Rd, Cambridge, ON 519.653.1234

Located off Hwy. 24 between Cambridge & Guelph

www.wingsofparadise.com



Heritage Rivers

Experience the history and wonder of our waterways...

Click On

www.visitguelphwellington.ca



discover the archives

Housed in a historic wing of the Museum, the Archival Collection consists of rare historical and genealogical records which document the history of Wellington County from its first settlement.

Join us for one of our Festival Days:

Feb. - *Heritage Day Multicultural Festival*

July - *Summer Thyme Herb Fair*

Aug. - *Antique & Classic Car Show*

Oct. - *Harvest Home Festival*

Dec. - *Christmas Festival*

explore the museum

Twelve exhibit galleries that reflect the lifestories of Wellington County people. Displays focus on material history, decorative arts and installations by local artists. Highlights include:

- ▲ *Far from Home: A Soldier's Life at the Front 1914-1918*
- ▲ *the Museum's superb textile collection*
- ▲ *First Story: The Neutrals in Wellington County*

Wellington County 
MUSEUM & ARCHIVES

0536 Wellington Road 18
(between Fergus and Elora)
R.R.1 Fergus, ON N1M 2W3
(519) 846-0916 Fax (519) 846-9630
info@wcm.on.ca www.wcm.on.ca



GUELPH MUSEUMS



GUELPH CIVIC & CHILDREN'S MUSEUM
OPEN DAILY 1 - 5 p.m.
6 Dublin St. S.



JULY - NOV: OPEN DAILY 1 - 5 p.m.
DEC. - JUNE: Sun. - Fri 1 - 5 p.m.
108 Water St.

Website: guelph.ca/museum (519) 836-1221 E-mail: museum@guelph.ca

CRAFT BREWERIES & WINERIES

Cox Creek Cellars Inc.

Visit Cox Creek for a unique experience! Private or bus tours welcome. Wine tasting is just the beginning.

Wellington County Rd 22 at Highway 6
519.767.3253

www.coxcreekcellars.on.ca

F&M Brewery

Try our Award Winning, Fire-Brewed Ales and Lagers. Grab the Hammer!

355 Elmira Rd. Unit 154, Guelph
1.877.316.2337 / 519.824.1194

www.fmbrewery.com

See ad on page 46

Sleeman Breweries Ltd.

Store open daily @ 10:00am. Cold refreshing beer & unique collectibles.

551 Clair Rd. W., Guelph
1.800.BOTTLES / 519.826.5472

www.sleeman.com

See ad this page

Wellington Brewery

Wellington Brewery is Canada's oldest Independently Owned Micro-Brewery. Brewing Award Winning Beer Since 1985.

950 Woodlawn Rd. W., Guelph
1.800.576.DUKE / 519.837.2337

www.wellingtonbrewery.ca

HERITAGE AND HISTORY



Guelph Museums (Guelph Civic Museum / McCrae House / Rogers Yahoo! Hi-Speed Growing Up in Guelph Children's Museum)

Guelph Civic Museum highlights Guelph's history from pre-settlement to present. The Children's Museum (located in the Civic Museum) explores Guelph past from a child's perspective.

McCrae House (a National Historic Site) is the birthplace of John McCrae, doctor, soldier, and author of the WWI poem "In Flanders Fields". All three sites offer interactive displays, exhibits and special events.

Guelph Civic Museum: 6 Dublin St. S., Guelph

McCrae House: 108 Water St., Guelph
519.836.1221

www.guelph.ca/museum

See ad this page

Church of Our Lady Immaculate

National Historic Site. Enjoy this opportunity to tour one of Canada's magnificent Gothic style churches.

28 Norfolk St., Guelph

519.824.3951

ourlady@dionet.ca

COME VISIT OUR POPULAR RETAIL STORE



- ▶ ICE COLD BEER
- ▶ UNIQUE CLOTHING
- ▶ COLLECTABLES

Sleeman Brewery Retail Store
551 Clair Road, West

Just off Hwy. 6 N. approx. 5km north of 401, exit 295
www.sleeman.ca



In Your Wildest Dreams . . .

**Nursery In The Woods
Display Gardens
Wildflower Trails**

INCREDIBLE SELECTION
Perennials, Shrubs, Vines, Trees, Natives

Open May to October

WildThings PLANT FARM

RR 3 Clifford, ON NOG 1M0
519 338-3228 www.wild-things.ca

*From Mount Forest, Go West 7 km on Hwy 89 to
Baseline Road. Turn North and Watch For Our Sign.*

Guelph Arts Council Historical Walking Tours

Walking tours of Guelph's historic core area are scheduled on selected Sundays. 2-4 pm; \$3/person.

April 23-June 25 & August 13 -
October 15, 2006

**147 Wyndham St., Suite 404, Guelph
519.836.3280**

www.guelphartscouncil.org

Hammond Museum of Radio

Experience the evolution of radio from telegraph to transistor within an exhibit of 2000 radios.

**595 Southgate Dr., Guelph
519.822.2441**

www.hammondmuseumofradio.org

See ad this page

Visit our Brewery
& Retail Store

Tours available by appointment

Store Hours:
Mon-Fri 10-6
Sat 12-5

GRAB THE HAMMER!

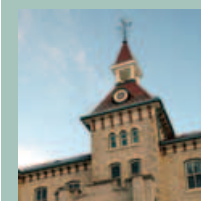


Try Our
Award-winning
Fire-Brewed
Beers!



Located in the Melran Mall (Elmira Road & Speedvale)
355 Elmira Road, Guelph N1K 1S5

(519) 824-1194



Wellington County Museum & Archives

A National Historic site recognized as Canada's oldest remaining House of

Industry. Twelve galleries featuring social, agricultural, native and settlement history of Wellington County, and an award winning World War 1 Exhibit. Archives with Genealogical and local history materials. Heritage Gardens. Trails. Picnic Tables. Festival Days, Art Shows, Art Workshops. Wheelchair accessible.

**0536 Wellington County Rd. 18, Fergus
519.846.0916**

www.wcm.on.ca

See ad on Page 44

Come and visit...

The Donkey Sanctuary of Canada Farm

Wednesdays and Sundays

9:00 a.m. - 4:00 p.m. (May 1st - Thanksgiving)

6981 Puslinch Conc.4
R.R.#6, Guelph, Ontario N1H 6J3
Telephone: (519) 836-1697
Website: www.donkeysanctuary.ca



Woodlawn Memorial Park

Beautiful Historic Cemetery offering Walking Tours, Mother's Day Service, Outdoor Theatre, Carol Singing and More.

**762 Woolwich St., Guelph
1.888.730.8199 / 519.822.1271**

www.woodlawnmemorialpark.ca

Visit a unique exhibit of antique radios



Daily Mon-Fri: 9 am - 4 pm
(other times by appointment)

595 Southgate Drive

(Hwy 6 North to Laird Rd., E. on Laird, N on Southgate Dr.)

**Hammond
Museum of Radio**

519-822-2441 ext. 590
www.hammondmuseumofradio.org

RURAL SITES AND EVENTS

Blossom Hill Fun Farm

Pumpkinfest: Haunted house, Farm and Halloween Activities. October Weekends 10:00 a.m. - 5:00p.m. From Guelph take Highway 6 north towards Fergus, left on Wellington County Rd. 7, go 1 km.

5676 Wellington County Rd. 7, Guelph
519.763.8118
www.funfarm.ca

The Donkey Sanctuary of Canada

Come and experience the donkeys' peaceful world and then enjoy your picnic by the pond.

6981 Puslinch Concession 4, Puslinch
519.836.1697
www.donkeysanctuary.ca
 See ad on page 46

Strom's Farm

Family Fun! Corn Maze, 1000's of pumpkins, Wagon Rides, Pumpkin Chuckin', Harvest Fun Starts Here!
5089 Wellington County Rd. 32, Guelph
519.822.1070
www.strom.ca

White Rock Ostrich Farm

Hay Wagon Tours, Concession Stand, Picnic Area, School or Seniors Tours, Gift Shop, Meat Sales.
13085 4th Line Guelph-Eramosa, Rockwood
519.856.1487
www.whiterockostrichfarm.com

WildThings Plant Farm

Trillium Festival, May 13-14. Canada Day, Eh! Garden Party, June 30, July 1, 2. Monster Plant Sale, September 2, 3, 4.
9688 Baseline Rd., Minto
519.338.3228
www.wild-things.ca
 See ad on page 46

Yee Haw Adventure Farm

Serving up a heapin' helpin' of fun "Hillbilly" style! Pig Races! Haunted Attractions! Animal Show!
1817 8th Concession W., Hamilton
519.624.0085
www.yeehawadventurefarm.com

On the wings of a butterfly...

Wings of Paradise Butterfly Conservatory is a popular destination for all ages. The Butterfly Conservatory, is home to an impressive gathering of 1500 to 2000 free-flying butterflies, enjoying the flora and fauna of their lush tropical garden surrounded by babbling brooks and waterfalls.



- June 3** 5th Annual Garden Festival
- June 3 & 4** Bobtail Truck & Car Show
- June 16-18** Canadian Handcar Racing Championships
- July 1** Clifford Antique Car & Tractor Show
- July 8** Town of Minto Canadian Redneck Games
- July 16-18** 6th Annual Summer Sizzle Piano Symposium
- July 21-23** 2nd Annual Summerfest
- Aug. 25-27** 127th Annual Palmerston Fall Fair
- Sept. 21-23** 147th Annual Harriston-Minto Fall Fair

Visit the Town of Minto "Where Your Family Belongs"

The Town of Minto, situated in the north-western boundary of Wellington County is the perfect place to bring your family for family-centred events and attractions! Enjoy our historic downtowns which feature live theatre, galleries, a railway museum, shopping and restaurants. Take advantage of our fresh country air while you stroll one of our walking trails or embark on a game of golf! For a complete list of the many events we have planned for 2006 check out our website, or visit our new information centre in downtown Harriston!

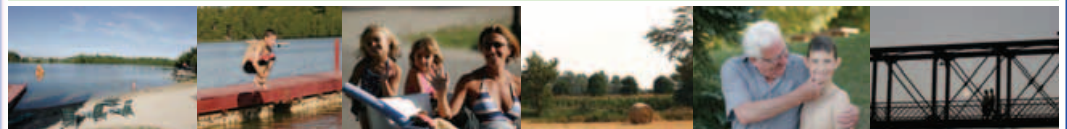


Town of Minto Tourist Information

5941 Hwy #89, Harriston, ON N0G 1Z0
phone: 519-338-2511 ext. 41
fax: 519-338-2005
email: belinda@town.minto.on.ca



Demolition Derby, Harriston-Minto Fall Fair



Festivals & Events

www.town.minto.on.ca