

## Power Stations in Greater Manchester

The Museum holds the Electricity Council archive, which includes a number of booklets that were published to commemorate the opening of power stations. This guide gives brief details of some of the power stations in Greater Manchester.

### Central Manchester power stations

**Dickinson Street Station** opened in 1893. Its engines were built by Musgrave and Ferranti, and its generators were made by the Electric Construction Company and Siemens Bros. Other plant was provided by British Westinghouse (later Metropolitan Vickers) and Galloway.

The **Bloom Street Station** provided the bulk of traction supply for the central area of Manchester, plus lighting and power demand. It was equipped with plant supplied by Musgrave, British Westinghouse and Babcock and Wilcox.

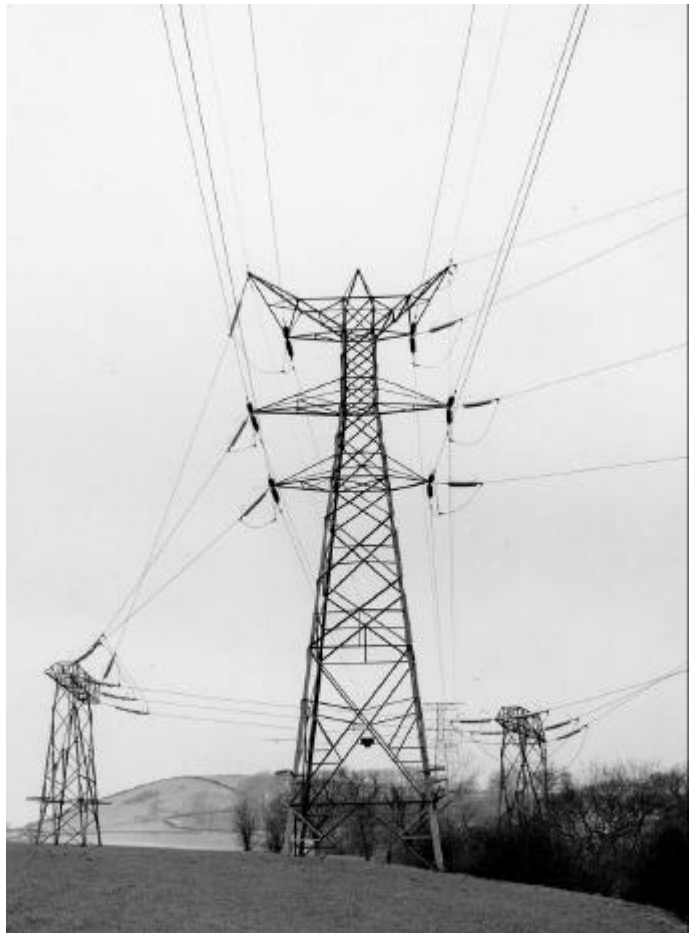
**Stuart Street Power Station** was built in 1900. The plant was supplied by companies including Babcock and Wilcox, Yates and Thom, and the Electrical Co. Ltd.

**Bolton, Back o' th' Bank Power Station** opened in 1914, in response to increasing demands for electricity in the Bolton area. The Borough had opened Spa Road Station in 1894, but it was unable to cope with demand. Back o' th' Bank was extended several times during the 1920s and 1930s.

### Blackburn East Power Station

The Board of Trade agreed to the building of the station in 1914 and it was officially opened in 1921. The plant was manufactured by the English Electric Company Ltd.

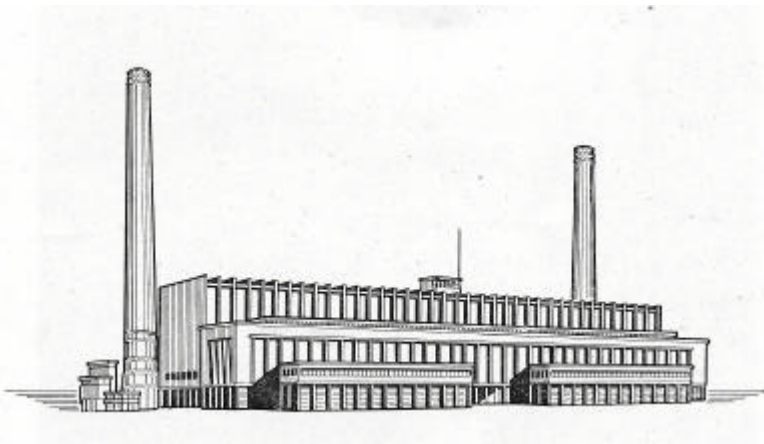
**Barton Power Station** was situated in Trafford Park, next to the Bridgewater Canal and Manchester Ship Canal. Building began in 1920 and the station came into service in 1923. Auxiliary plant, such as boiler feed pumps, was supplied by the well-known Manchester firm Mather and Platt. Barton supplied an area of 3,100 square kilometres (1,200 square miles), which included the city of Manchester and the South East Lancashire Electricity District, as outlined under the Electricity Supply Act, 1919.



Extensions were made in 1928 and 1936. The plant was made by Metropolitan Vickers and Simon-Carves Ltd. and the switchgear was made by British Thomson-Houston.

**Hartshead Generating Station**, situated on the Wakefield Road just outside of Stalybridge, was opened in 1926. It was run by the Stalybridge, Hyde, Mossley and Dukinfield Transport and Electricity Board, which was formed in 1899.

Stretford and District Electricity Board opened **Trafford Power Station** in 1929. Plant for the station was made by Parsons, Babcock and Wilcox, and Metropolitan Vickers.



### **Chadderton B Power Station**

opened in 1955. Oldham Corporation had decided in 1943 to replace the generating plant at their Slacks Valley Power Station in anticipation of greater demand for electricity. The Corporation chose to redevelop at Slacks Valley, a 95-acre site in Chadderton, about four miles from Oldham.

### **Carrington Power Station**

The Carrington site was acquired in 1916 as an alternative to Barton but was not developed until after the Second World War. The station was planned by Manchester Corporation Electricity Department and work started in 1947. The site was bounded by the River Mersey and the Manchester Ship Canal. Boilers were supplied by Babcock and Wilcox and John Brown Land Boilers Ltd. The station was officially opened in 1956.

**Radcliffe Power Station** was operated by the Lancashire Electric Power Company, which was incorporated by the Lancashire Electric Power Acts, 1900 to 1906. The 1900 Act gave the company the right to supply electrical energy in bulk to local authorities or other authorised undertakers. The 1906 Act added the right to supply electrical energy direct to users of power. The company supplied electricity to the whole of Lancashire south of the Ribble, except for the boroughs of Manchester, Salford, Liverpool, Bootle and Southport and the central part of Bolton.

*For more information:*

*Consult*      The Electricity Council archive in the Museum's Collections Centre.

*Visit*         The Museum's National Electricity Gallery, which features a turbine set from the Back o' th' Bank Power Station.