

# Joe Allen

*A special selection*

The series of portraits which are my latest work were not planned. They came as a gift as it were.

I put down two or three tones and there he was "Manet"; I just had to bring him out of the shadows a little more. Interested, excited, I took a fresh canvas and began in the same way, Mary Cassatt showed herself, and as I repeated the process Soutine arrived. It was then that I began to think of a series of small paintings of painters and the people associated with them, who had interested me, and who had accompanied me through my artistic life.

As the series developed, the process changed in that I sometimes worked in more detail, the heads being more modelled, or that the images of one artist would change to another, even the gender would change, a male artist changing to a female artist, mistress or wife.

While some of the portraits such as Martha Bonnard, Fernande Olivier, Eduard Munch or Toulouse Lautrec are more figurative, others, are left at a more suggestive stage. It was a matter of deciding "was there enough information, were they alive, had I brought them back again?"

It was an exciting time, wondering who through the medium of paint; I could contact, or better said, who would reveal him – or herself.

I wanted to offer as little realistic information as possible, not intending to paint portraits in the traditional sense but to present their psychological presence rather than their physiognomy.

Joe Allen

#### **Impressum**

ISBN 978-2-919881-19-1

© Galerie Clairefontaine

© for the images Joe Allen

Layout: Birgit Emig

Printed by BEXX GmbH

published by

Editions Clairefontaine

7, Place de Clairefontaine

L-1341 Luxembourg

Tel +352 47 23 24

Fax +352 47 25 24

e-mail: [galerie.clairefontaine@pt.lu](mailto:galerie.clairefontaine@pt.lu)

Internet: [www.galerie-clairefontaine.lu](http://www.galerie-clairefontaine.lu)

#### **Titelbild:**

**Kamala's Garden**, 2001, Öl und Wachs auf Holz, 276 x 321 cm



**Form** in a Landscape, Öl und Wachs auf Leinwand / Holz, 2002 - 2004, 92 x 107 cm



**The Grass Harp**, 2005, Öl und Wachs auf Holz, 276 x 321 cm



**Conversation**, 2004, Öl und Wachs auf Holz, 276 x 321 cm



*Alle Portraits: 2007, Öl auf Leinwand, 18 x 24 cm*

**Paul Cézanne**



Vincent van Gogh



Fernande Olivier





Martha Bonnard



David Hockney



Berthe Morisot



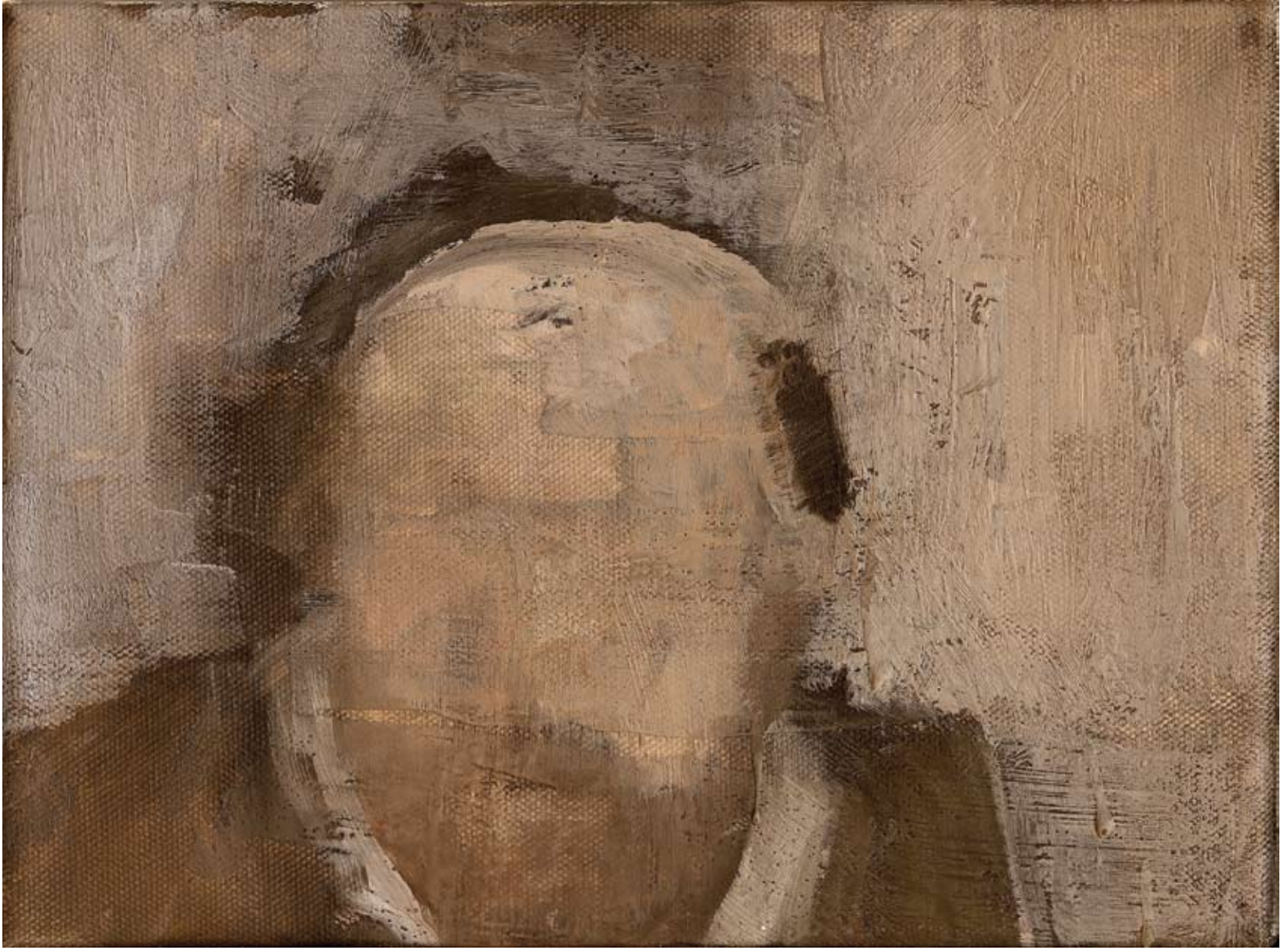
Amélie Matisse



Henri Matisse



Henri Toulouse-Lautrec



Paul Cezanne



Camille Pissarro



Max Jacob



Mary Casat



Chaim Soutine



Ferdinand Sauerbruch  
after Max Liebermann



Pablo Picasso



Rembrandt



Alberto Giacometti



Edouard Manet



Eugène Delacroix



Eugène Delacroix



Susanne Valadon



Portrait of an unknown man



Francis Bacon



Jenny



Marc Rothko



Pierre Bonnard



Edward Munch



Frans Hals



Toulouse-Lautrec sleeping





**Warlord**, 2002, Öl und Wachs auf Holz, 14,6 x 29,7 cm

# Joe Allen

*1955 geboren in Airdrie, Schottland*

1975–76 St. Martins School of Art, London

1976–79 Camberwell School of Art, London  
(Bachelor of Arts with Honours Degree)

1979–82 Royal Academy Schools, London (Master of Arts Degree)

## **Einzelausstellungen**

1986 Galerie Ariadne, Wien; Galerie Annasäule, Innsbruck; London  
Innsbruck; Art Cologne '86

1987 All Art Forum Thomas, München

1988 Galerie Ariadne, Wien

1989 Galerie Elisabeth und Klaus Thoman, Innsbruck

1991 Galerie Clairefontaine, Luxemburg

1992 Galerie Ariadne, Wien

1995 Cynthia Bourne Gallery, London

1997 GaLerie Clairefontaine, Luxemburg; Europäische  
Kunstakademie für Bildende Künste, Trier

2000 Galerie Clairefontaine, Luxemburg; Künstlerhaus Metternich,  
Koblenz; Galerie Bernd Weise, Chemnitz

2003 Galerie Clairefontaine, Luxemburg; Galerie NETUSCHIL,  
Darmstadt

2006 Galerie Clairefontaine, Luxemburg; Stiftung Museum Schloss  
Moyland, Bedburg-Hau

2007 Galerie Clairefontaine, Luxemburg

2008 Museum Schloß Detmold

## **GRUPPENAUSSTELLUNGEN (Auswahl)**

1979 „Use of Drawing“, Whitechapel Art Gallerie, London; Stowells  
Trophy Exhibition, Royal Academy, London

1981 „New Contemporaries“, I.C.A., London Royal Academy  
Summer Exhibition

1982 Christies Inaugural Exhibition“, Christies, London

1984 Europahalle Trier, „European Painting Today“

1985 Newcastle Polytechnic Gallery, Newcastle

seit 1986 Teilnahme an zahlreichen internationalen Kunstmesse(n)  
(Madrid, Basel, Köln, Chicago, Los Angeles, Montreal) mit  
verschiedenen Galerien

1987 Ferran Cano Galerie, Palma, Mallorca

1989 Ferran Cano Galerie, Palma, Mallorca

1995 John Moor's Liverpool Competition, Liverpool

1997 „Kissing“, Galerie Clairefontaine, Luxemburg

2000 „Portraits“, Galerie Clairefontaine, Luxemburg

2001 A.K.M. Künstlerhaus, Koblenz; Péchés Mignons,  
Galerie Clairefontaine, Luxemburg

2002 Royal Academy Summer Exhibition, London; „To be or not to be“,  
Galerie Clairefontaine, Luxemburg; Festspielhaus Hellerau, Dresden

2003 Royal Academy Summer Exhibition, London; „Small  
Paintings“, Galerie Clairefontaine, Luxemburg

2004 Burlington Fine Art Gallery, London

2005 Royal Academy Summer Exhibition, London; Burlington Eine  
Art Gallery, London

2006 K4 Galerie, Saarbrücken (Ausstellung anlässlich des Robert  
Schumann Preises); „Nach seinem Bilde“, Bischöfliches Dom und  
Diözesanmuseum Trier



A Slight Ache 3, 2005, Öl und Wachs auf Leinwand, 50 x 60 cm

GALERIE  
CLAIREFONTAINE



ESPACE 2

21, RUE DU ST-ESPRIT  
L-1475 LUXEMBOURG  
TEL. 47 23 24 • FAX 47 25 24  
e-mail: [galerie.clairefontaine@pt.lu](mailto:galerie.clairefontaine@pt.lu)  
[www.galerie-clairefontaine.lu](http://www.galerie-clairefontaine.lu)