

FISHING MAP

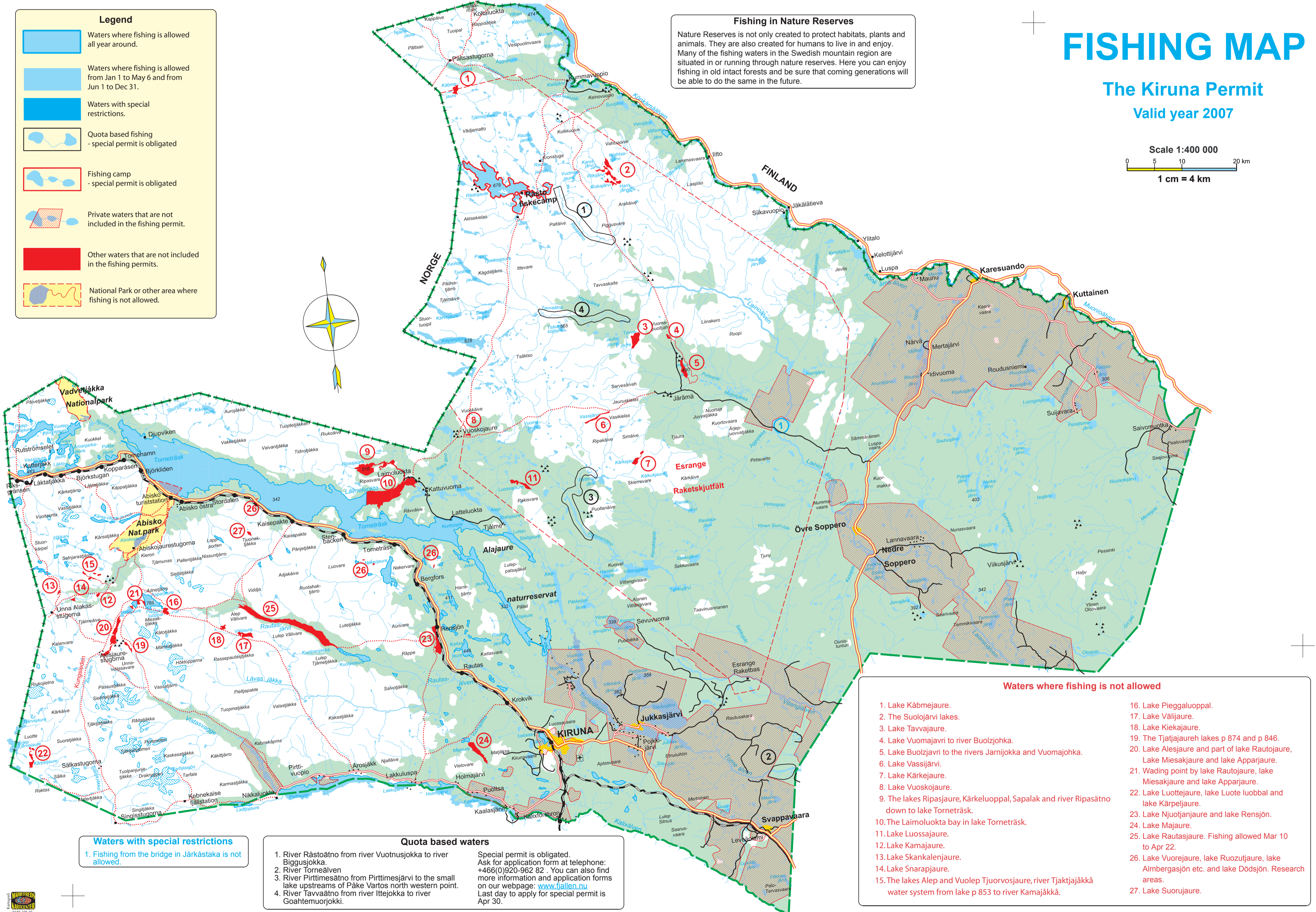
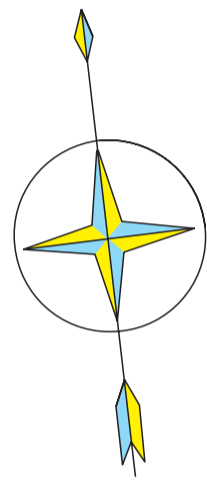
The Kiruna Permit
Valid year 2007

Scale 1:400 000
0 5 10 20 km
1 cm = 4 km

Legend

- Waters where fishing is allowed all year around.
- Waters where fishing is allowed from Jan 1 to May 6 and from Jun 1 to Dec 31.
- Waters with special restrictions.
- Quota based fishing - special permit is obligated
- Fishing camp - special permit is obligated
- Private waters that are not included in the fishing permit.
- Other waters that are not included in the fishing permits.
- National Park or other area where fishing is not allowed.

Fishing in Nature Reserves
Nature Reserves is not only created to protect habitats, plants and animals. They are also created for humans to live in and enjoy. Many of the fishing waters in the Swedish mountain region are situated in or running through nature reserves. Here you can enjoy fishing in old intact forests and be sure that coming generations will be able to do the same in the future.



Waters with special restrictions
1. Fishing from the bridge in Järkästaka is not allowed.

Quota based waters
1. River Råstoättno from river Vuotnusjokka to river Biggusjokka.
2. River Torneälven
3. River Pirttimesättno from Pirttimesjärvi to the small lake upstreams of Påke Vartos north western point.
4. River Tavvaättno from river Ittejokka to river Goahthemurjokki.
Special permit is obligated. Ask for application form at telephone: +46(0)920-962 82. You can also find more information and application forms on our webpage: www.fjallen.nu Last day to apply for special permit is Apr 30.

- Waters where fishing is not allowed**
- Lake Kåbmejaure.
 - The Suoljärvi lakes.
 - Lake Tavvajoure.
 - Lake Vuomajavri to river Buolzjohka.
 - Lake Buolzjavi to the rivers Jarnijokka and Vuomajohka.
 - Lake Vassjärvi.
 - Lake Kärkejaure.
 - Lake Vuoskojaure.
 - The lakes Ripasjoure, Kärkeluoppal, Sapalak and river Ripasättno down to lake Torneträsk.
 - The Laimoluokta bay in lake Torneträsk.
 - Lake Luossajaure.
 - Lake Kamajaure.
 - Lake Skankalenjaure.
 - Lake Snarajaure.
 - The lakes Alep and Vuolep Tjuorvosjaure, river Tjaktjajökkä water system from lake p 853 to river Kamajökkä.
 - Lake Pieggaluoppal.
 - Lake Välljaure.
 - Lake Kiekajaure.
 - The Tjattajaureh lakes p 874 and p 846.
 - Lake Alesjaure and part of lake Rautojaure, Lake Miesakjaure and lake Apparjaure.
 - Wading point by lake Rautojaure, lake Miesakjaure and lake Apparjaure.
 - Lake Luottejaure, lake Luote luobbal and lake Kärpeljaure.
 - Lake Njuotjanjaure and lake Rensjön.
 - Lake Majaure.
 - Lake Rautasjaure. Fishing allowed Mar 10 to Apr 22.
 - Lake Vuorejaure, lake Ruozutjaure, lake Almburgasjön etc. and lake Dödsjön. Research areas.
 - Lake Suorjaure.