

ELEV 74

NZWG

WIGRAM**ARRIVAL/DEPARTURE**

CHRISTCHURCH CONTROL: 120.9

CHRISTCHURCH ATIS: 127.2

UNATTENDED: 118.75

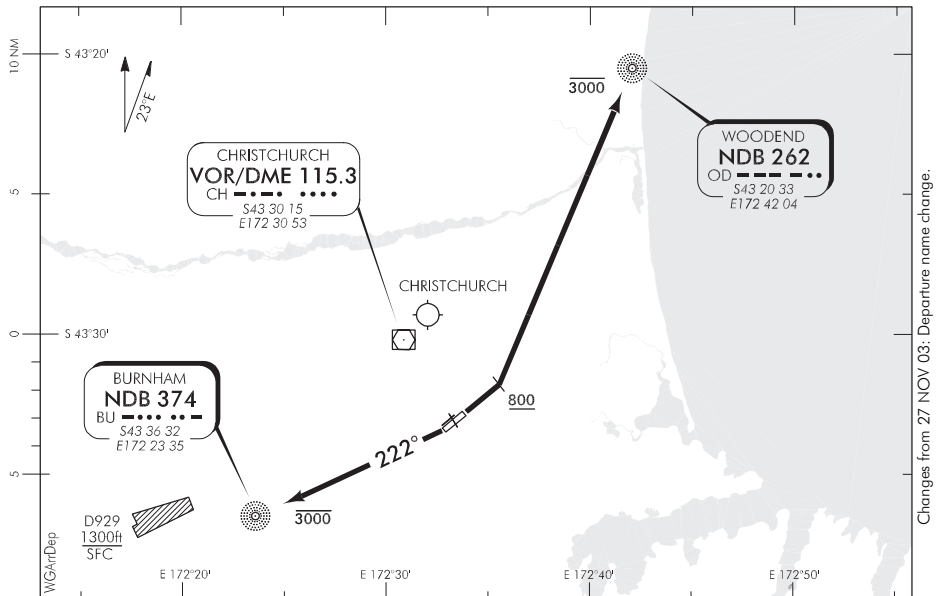
Arrival Procedures

Make appropriate instrument approach at Christchurch, thence proceed VFR to Wigram.

Departure Procedures

Contact Christchurch Control 120.9 for traffic information, clearance delivery and departure instructions.

Call Christchurch Control 10 minutes before departure advising runway for take-off and preferred departure procedure. Report three minutes before ready for take-off requesting departure clearance.



When airborne contact CONTROL 120.9.

Minimum net climb gradient 3.3% (200ft/NM).

Take-off RWY 03**CITY ONE DEPARTURE (CIT1)**

- Maintain RWY centreline to MNM 800ft
- Turn LEFT, track direct to OD NDB
- Maintain 3000ft to OD NDB
- Intercept cleared track

Take-off RWY 21**ROLLESTON ONE DEPARTURE (ROL1)**

- Track 222°M to BU NDB
- Maintain 3000ft to BU NDB
- Intercept cleared track

Effective: 16 MAR 06



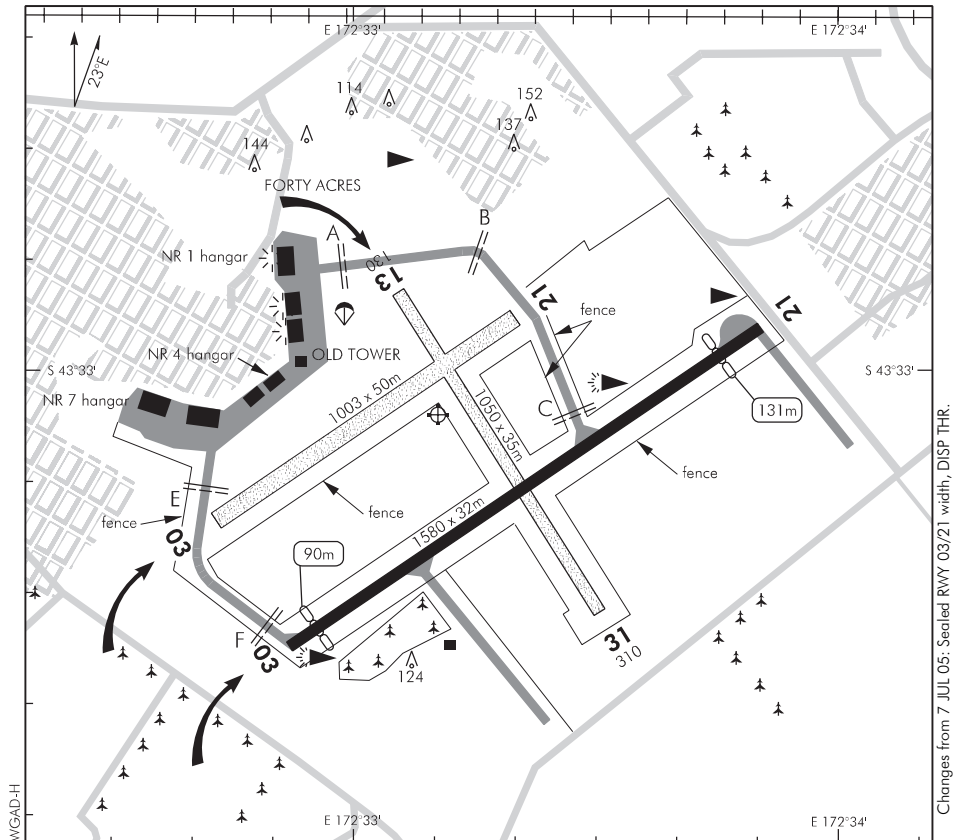
ELEV 74

NZWG

CHRISTCHURCH ATIS: 127.2

WIGRAM**AERODROME**

UNATTENDED: 118.75



1. Circuit altitude: 1100ft Joining altitude: 1500ft
2. Circuit direction: RWY 03, Grass RWY 03, 13 — Right hand
RWY 21, Grass RWY 21 — Left hand
Grass RWY 31 — Left hand with an extended circuit to avoid housing areas.

Aircraft in the circuit are to remain clear of the Christchurch CTR/C unless approved by Christchurch Tower.

3. Circuit limitations: No circuit training permitted on RWY 13/31.
4. All take-offs and landings confined to designated runways.
5. **CAUTION:** Operators to use airfield at own risk. Areas soft when wet. Runways and taxiways are not swept.
6. Aircraft operating within Wigram circuit make unattended aerodrome calls on 118.75 MHz.
7. Model aircraft flying up to 500ft AGL, may take place north of a line from the OLD TOWER to the threshold of grass RWY 21 on Sundays.
8. **CAUTION:** Bird hazard usually high.
9. Parachuting may take place at any time onto parachute landing area between holding position A and the OLD TOWER.

Changes from 7 JUL 05: Sealed RWY 03/21 width, DISP THR.

S 43 33 04 E 172 33 10

Effective: 15 FEB 07

© Civil Aviation Authority

**WIGRAM
AERODROME**

RWY

RWY	SFC	Strength	Gp	Slope	ASDA	Take-off distance			LDG DIST
						1:20	1:30	1:40	
03 21	B	PCN 29 F/Y/C/T	8	Nil	1580			1449 1490	1433 1414
03 21	Gr	ESWL 9080	8	Nil	1003	1003			1003
13 31	Gr	ESWL 9080	8	Nil	1050	1050			1050

MINIMA

IFR Take-off		
RWY	Day	Night
03/21	300-1500	300-1500
All others	300-1500	NA

LIGHTING

CAUTION: Lighting and VASIS are no longer operated, calibrated or maintained by aerodrome operator.

Runway: 03 REIL, AT-VASIS 3.00°/TCH 42, LIH RWY
21 REIL, AT-VASIS 3.00°/TCH 49, LIH RWY

Aerodrome: WDI

Taxiway: Southern taxiway, edge B.

FACILITIES

Fuel: Shell Avgas 100. Swipecard. Located between Old Tower and NR 4 hangar.

SUPPLEMENTARY

Operator: Wigram Aerodrome Ltd, PO Box 13 0060, Christchurch.
Tel (03) 377 3711 Fax (03) 365 5939

Available for general use for private operations. Operations with aircraft above 30 passenger seats require prior approval of the aerodrome operator.

Landing fees payable. An honesty box for landing fees is located on the taxiway adjacent to the Shell fuel facility. The scale of charges is displayed at the honesty box.

Landing fees must be paid at time of landing otherwise penalty charges will be incurred.