

# T-STREAMER™/8VSB

**ATSC Streamer With 8VSB Modulator For Continuous Playback of Multi Program or Single Program Transport Streams From on Board Hard Drive or From External Devices Direct to Any ATSC Tuner. Perfect For Driving HD Content to Plasma Monitors in Retail Stores or Onto Any Video Feed in Public Venues.**



## Features

- Input: DVB ASI or SMPTE 310M (Single or Multi Program Transport Streams)
- Output: Low Jitter 8VSB (ATSC)
- Content capture via 100 BT or CD
- One RF channel can have up to one HD and one SD stream or three SD streams
- On board transport stream files
- Additional MPTS streams can be created for you and included on Hard Drive
- Supports MPTS streams up to 19.3 Mbps
- 250 Gigabyte hard drive standard; Larger hard drive optional
- Playing time can be 3-5 hours and larger hard drive can be accommodated
- Continuous playback
- Complete channel range available from 2-69
- Optional hot swappable hard drive
- Optional MyHD PCI ATSC receiver for self test and monitoring
- Available in three forms:
  - 4 RU Rackmount
  - 1 RU Rackmount
  - Rugged portable “Lunch box”
- Runs on Windows® XP

## Applications

- Engineering labs
- HD monitor testing
- Private "In House" TV operations
- Retail stores, restaurants, trade shows, universities

## Overview

RF modulators convert a video signal to RF (radio frequency) so the video can be transmitted to a television via its RF input. 8VSB is the RF modulation format used for SMPTE 310M, the standard video format designated by the ATSC organization.

The **T-Streamer™/8VSB** is a transport stream player with an integrated 8VSB modulator. It is designed to play DVB ASI multiple or single program transport streams for continuous “looped” playback on TV monitors. You can *simultaneously play back different virtual channels to multiple TV monitors* – making the T-Streamer/8VSB ideal for restaurants, bars, stores, and other public spaces wishing to feed many digital TV channels to multiple high definition televisions. It is also extremely useful for HD monitor testing.

The T-Streamer/8VSB is designed for 24/7 operation, and has been shown to be extremely reliable. Several features of the T-Streamer/8VSB make it useful in both lab and broadcast environments, such as the ability to play a playlist in sequence. This can be useful in the broadcast industry. Six transport streams are included with the T-Streamer/8VSB. Additional transport streams can be requested at time of purchase.

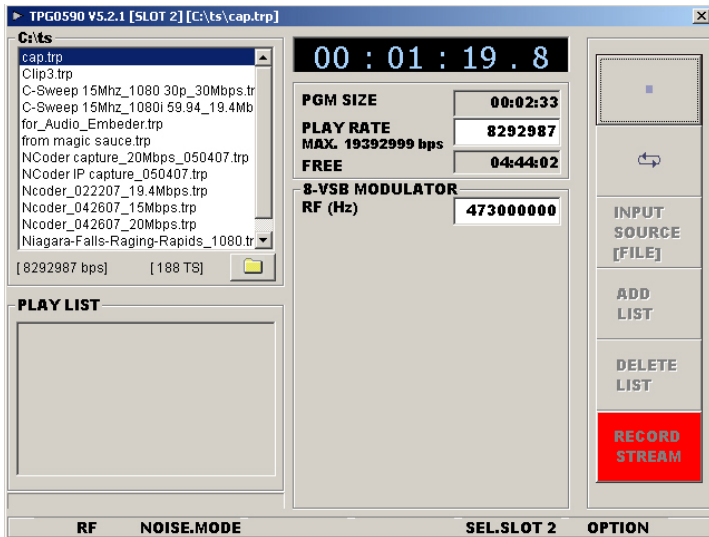


11409 West Bernardo Court  
San Diego, CA 92127

Tel: (858) 613-1818 Fax: (858) 613-1815

[www.dveo.com](http://www.dveo.com)

## Screen Shot



Main GUI

## Ordering Information

- T-Streamer/8VSB
  - Standard T-Streamer/8VSB in 4RU 19" rack with 250 GB HD
- Extended T-Streamer/8VSB/EXT W
  - Extended warranty for two years with Express Drive Exchange
- T-Streamer/8VSB/HA/XX
  - High Availability T-Streamer/8VSB with Dell PowerEdge Server 500 GB HD in 19" 1RU rack
    - \* 24/7 phone and online support from Dell, OR
    - \* 24/7 phone and online support plus same day (4 hour) on-site service from Dell
- T-Streamer/8VSB/LB
  - T-Streamer/8VSB in a "Lunchbox" instrument case

**NOTE:** No keyboard, Mouse, or Monitors are shipped with any T-Streamer/8VSB.

## Specifications

### Standard System

- 4 RU 19" Industrial Computer (Black) with rails
- P4 Motherboard with 100/1000 BT
- 1024 MB Ram 16MB Video 48x CD/DVB
- 250 GB - ATA HD
- Windows® XP
- Front panel touch screen

### High Availability System

- 1 RU 19" in Dell PowerEdge 850 P4 Motherboard with 100/1000 Gig E 1024 MB Ram
- 32 MB video
- 48x CD/DVB ROM
- 500 GB - SATA HD
- Windows XP including various Dell on-site service plans
- Optional Hot Swap Hard Drive