

# A major European university



GÖTEBORG  
UNIVERSITY

# Göteborg University – a Nobel Prize university



In 2000 Arvid Carlsson received the Nobel Prize in Medicine for his ground-breaking research on signal transduction in the nervous system.





# Göteborg University

Göteborg University is one of Europe's major universities with about 51,000 students.

The concentration of its activities in the heart of a large city on the Swedish west coast gives the University its special identity and character.

Openness to society has been an important feature ever since its establishment in 1891. The link between academic knowledge and time-tested experience unites Göteborg University with trade, industry and culture. Constructive collaboration with the outside world is combined with critical analysis of trends in society and in trade and industry.

The nine faculties add breadth and variety to the University. They make possible creative cooperation between different disciplines and offer students rich opportunities for combining different topics. Subjects can be studied in a large number of separate courses as well as in degree programmes. Research ranges across all the sciences apart from technology, which is the main activity of the nearby Chalmers University of Technology. Göteborg University cooperates closely with Chalmers.

Academic excellence and a critical search for the truth provide the essence of Göteborg University's activities. High quality research and teaching is the hallmark of the University. I hope that this is evident in all your dealings with the University.

We invite you to find out more about what Göteborg University has to offer.

*Gunnar Svedberg*

VICE-CHANCELLOR OF GÖTEBORG UNIVERSITY



# A major European university

Göteborg University has about 51,000 students and 5,500 employees. It is the largest university in Scandinavia. It is also the most popular university among Swedish school leavers. With its nine faculties and approximately seventy departments, Göteborg University is also the most wide-ranging and versatile university in Sweden, offering unique opportunities for cooperation and development.

A distinctive characteristic of university education is the close interaction between teaching and research. Students are kept informed of the latest developments in the field they are studying and at the same time researchers are inspired by the students' expectations and needs. At Göteborg University research and teaching are regarded as equally important, and pedagogical development is taking place continuously.

Even from an international perspective, Göteborg University is unusually comprehensive with cutting-edge research in a number of dynamic research areas.

The cooperation with Chalmers University of Technology, the Sahlgrenska University Hospital, with society at large and with trade and industry has been consistently strengthened and intensified in recent years, as have international contacts and collaborative projects abroad.



# Tradita innovare, innovata tradere

‘Renew our heritage and pass it on renewed’: this is the motto of Göteborg University.

Academic traditions, in particular, are a blend of the old and the new. Every autumn the University puts on its largest award ceremony, when, with much pomp and circumstance, all new doctoral degrees (including honorary doctorates) are awarded and the recipients accept their special insignia. By tradition all new doctors receive a ring and a diploma, and in addition doctors of philosophy receive a crown of laurels and the others a special hat. Every spring, in another formal ceremony, the Vice-Chancellor introduces the University’s new professors.

Göteborg University College was established in 1891 with the help of private donations.

The first classes were held by seven professors teaching seven subjects to twenty-one students, four of whom were women. In 1907 it became an independent university college with the same status as the two national universities of Uppsala and Lund.

Göteborg University was formally founded in 1954 through the amalgamation of this college with the Medical College, which had been established in 1949.

During the 1950s and 60s, the University expanded rapidly, moving from 500 students in the late 1940s to approximately 21,000 in the late 1960s. In 1971 the School of Business, Economics and Law became part of Göteborg University.

Over the years a number of previously independent colleges have been incorporated into the University, the most recent being the College of Health. Today Göteborg University can offer the most comprehensive range of courses and degree programmes in Sweden.



## Open minds, open doors


Göteborg University is an international university, engaged in around 2,000 collaborative projects in various parts of the world. The University cooperates mainly with other countries in the EU but has important partners in all regions of the globe. An increasing number of links with other parts of the world are being developed.

Göteborg University is the only Swedish university with centres for research and education in all regions of the world, for instance Africa, Asia and Latin America.

GSGS, the Göteborg School of Global Studies, is the name of a new centre whose task is to facilitate cooperation with countries outside Europe and the United States. The Centre collects research and information about globalisation and global studies and is working to attract international funding, guest lecturers and students from abroad and to promote international exchange and masters programmes.

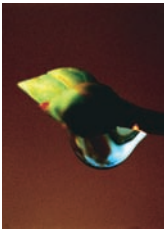
The University is strongly committed to being open and accessible to the general public. The departments in the Faculty of Fine and Applied Arts regularly put on a variety of performances and exhibitions. Every spring the University participates in the international Science Festival, frequented by about 80,000 visitors. In the autumn there is a University Week, when all faculties arrange non-specialist events for the general public. Göteborg University is also the only university in Scandinavia that produces its own TV programmes to be shown to the public.





At times it may be beneficial to conduct debates and discussions in a more peaceful environment. In a beautiful area outside Göteborg, on a lake called Aspen, is the old manor house Jonsæred. Here teachers, researchers and artists can retreat to finish a piece of work or take part in creative discussions.

## Committed to a sustainable society



No less than forty percent of all environment-related research in Sweden is carried out in Göteborg, often in ground-breaking projects where Göteborg University collaborates with Chalmers University of Technology. A good example of this is the Göteborg Centre for Environment and Sustainability, Sweden's largest network for environmental researchers, with more than 300 researchers collaborating on sustainable development.

The School of Business, Economics and Law at Göteborg University is at the forefront of research on the link between the economy and the environment. In the Department of Law the most extensive research in the country is carried out on environmental law and the department has a unique competence in this and adjoining fields.

Göteborg University is also actively emphasising that environmental considerations must play a part in all areas of University life, in research and teaching, as well as in administrative and technical activities. The aim for the University is to be able to meet the international environmental standards specified in ISO14001 by the year 2006.





## Midtown – Midstream



Göteborg University is situated in the centre of the city, close to cafés, shops, streets and a busy and buzzing social life. The short distance between the various university departments encourages and facilitates cooperation and interdisciplinary exchange, and meetings across different subject boundaries occur constantly. The Faculties of Arts and of Fine and Applied Arts are close to centres of culture like the City Theatre, The Art Museum and the Concert Hall. The School of Design and Crafts is near the Röhsska Museum, Sweden's only design museum, and next to the Valand School of Fine Arts. Several of the Science departments are in vicinity of Chalmers University of Technology. The department of Zoology, the Earth Sciences Centre, and most of the Departments of Medicine, Odontology, and Health Care Sciences are on the hill just north of the Sahlgrenska University Hospital.

The School of Business, Economics and Law at Göteborg University is only a few steps away from some of the social sciences departments. The Botanical Institute is in the Botanical Garden, and the Department of Psychology is close by.

Old and new buildings merge into one another – Lindholmen, a short ferry ride from the city centre, is the location of the IT University, in new, modern buildings with innovative designs.

Göteborg University arranges several national as well as international conferences and meetings every year.

Teachers and researchers also contribute to public debate in Sweden and are among the most frequently cited experts in the country. Openness and a willingness to debate have been important characteristics of the University ever since its foundation.

## Göteborg – gateway to the world

Göteborg, Sweden's second city with nearly 500,000 inhabitants, is situated on the Swedish west coast. The city is roughly equidistant from the Scandinavian capitals Stockholm, Copenhagen and Oslo, in the very centre of northern Europe.

The city was founded in 1621 on a Dutch model by the warrior king Gustavus Adolphus and his aim was to open up a window to the rest of the world. Today the city has developed into a centre for cultural and other events in the heart of Scandinavia. Göteborg is characterised by its proximity to the sea. In the archipelago there are many small and large islands, which are popular holiday destinations in the summer. The presence of water has also influenced Göteborg University. It has a strong marine profile and about 80 percent of all marine research in the country is carried out here.

Göteborg is an important conference venue and plays host to a large number of international events: in February every year the Göteborg Film Festival takes place, in the summer the city stages Gothia Cup, the largest football tournament in the world for young people, and in the autumn there is the Göteborg International Book Fair.

Göteborg hosted the World Championships in Athletics 1995 and will arrange the European Championships in Athletics in 2006.

The largest shopping centre in the Nordic countries is in Göteborg, and there are also many small shops and boutiques. For people interested in culture Göteborg has a lot to offer. There is an opera house, a concert hall and an art museum with predominantly Nordic art.

The Botanical Garden is one of the most prominent in the world, and Liseberg is the largest amusement park in Scandinavia. There are also several museums, for instance the new Museum of World Culture. In the centre of the city, among shops, streets and meeting places, are the different departments of the University.

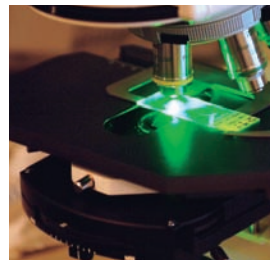


## Patient-focused education and research

The Sahlgrenska Academy consists of three interacting parts: Medicine, Odontology and Health Care Sciences. Doctors, dentists and nurses are trained here, as well as audiologists, occupational therapists, physiotherapists, speech therapists, midwives and pharmacists. Many of these programmes are among the most popular in Sweden.

The Sahlgrenska Academy facilitates cooperation across different disciplines, and possess a unique breadth of experience in the health care sciences. The Sahlgrenska Academy also cooperates closely with the Sahlgrenska University Hospital, which houses many of the Academy's departments.

The Academy and the Hospital collaborate on nearly 300 research projects.







Niclas Sahlgren was one of the richest men in Sweden in the 18th century. In his will he bequeathed his belongings to “some charitable institution in this city, a widower’s house, work house or hospital, or all three...” This was the foundation of what is now the Sahlgrenska University Hospital. The Sahlgrenska Academy has taken Sahlgren’s name, partly to indicate its close cooperation with the Hospital, partly to honour the great benefactor.

The research carried out in the Academy is of the highest international standards: in the field of Medicine research is done in a number of projects, from the basic structure of molecules and cell functions, to large investigations about public health.

The research in the field of Odontology is among the most advanced in the world.

The field of Health Care Sciences is the first of its kind in Sweden. Together with the other two it forms an integral unit, which focuses on the human being rather than the illness.

## The marine university



**G**öteborg University is Sweden's leading centre for research and education in marine sciences, and has access to well-equipped research vessels and field stations. Marine and environmental sciences are integrated into the Faculty's departments, which cover biology, chemistry, physics, earth sciences, mathematics, and conservation. Research and teaching in areas such as genomics and pharmaceutical science



is carried out in collaboration with the faculties of Medicine and Engineering, the latter at Chalmers University of Technology.

Universeum, the largest Science Centre in Sweden, grew out of a project initiated by the Faculty. Other public outreach activities focused on schools, industry, and the general public are coordinated by a resource centre. Encouraging young people to study natural sciences is an important goal for public outreach activities.



Science at the sea. Tjärnö Marine Biological Laboratory is one of Göteborg University's field stations. Research and teaching go on throughout the year.

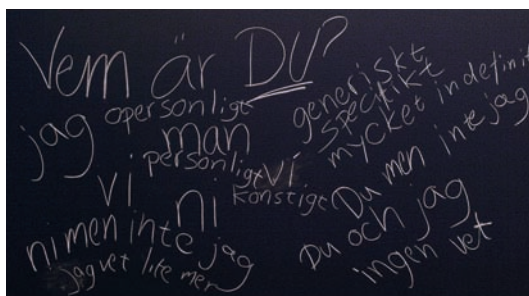
## *The Faculty of Arts*

# Man as communicator takes centre stage

In the Faculty of Arts you can study more than twenty different languages, from Swedish and English to Japanese and Chinese. Other subjects include, for example, History, Archaeology, Religious Studies and Theology, Philosophy, and Theory of Science and Research. There is interdisciplinary education in Computational Linguistics, where language studies and technology are combined. The Faculty also plays host to a national Graduate School in Language Technology. You can also train to become a translator of English, German, French, Spanish, Italian and Russian.

In the Faculty there is a special Medieval Committee which does research and organises conferences and seminars about anything medieval.

Research is also carried out into many other fields, for instance Computational Linguistics and Contemporary Culture.



## *The Faculty of Fine and Applied Arts*

# A diversity and variety unique in the world

The Faculty of Fine and Applied Arts has a unique breadth in its programmes and activities that is a consequence of many years of artistic development work.

But it is not just in its breadth that the Faculty is unique. The collaboration with other organisations, authorities, centres of learning and businesses is equally unrivalled and can be seen at all levels, regional, national and international. The Faculty's work on design and free art, boundary-crossing photography and film, regular exhibitions of paintings, craft, sculpture and applied art, for instance, has received much attention.

An extensive programme of concerts, symphony orchestras, chamber ensembles, jazz groups, theatre, musical and opera performances and literary events are further examples of boundary-crossing collaboration, as are its cultural heritage and pipe organ-preservation, international festivals and symposia.

The Faculty of Fine and Applied Arts is also involved in international exchange with other universities. Examples include a research project in music pedagogy in South Africa, Palestine, and East Africa, organ-building for universities in South Korea and the USA, and digital development in the visual arts in Russia.

The establishment of a Faculty of Fine and Applied Arts has also made possible an investment in artistic research with at present some thirty doctoral students in a number of research subjects.

Artistic education and research in close cooperation with artistic development work provide a triangle of considerable future potential for the Faculty.





## An international profile



**T**he School of Business, Economics and Law was founded in 1923 and incorporated into Göteborg University in 1971. This is where you can study, among other subjects, Economics, Law, Human and Economic Geography, Economic History, Business Administration and Statistics.

The School conducts very extensive research. It leads the field in Scandinavia in business studies research and does prominent work in many other areas, like the environment and finance.

There is very extensive exchange with the rest of the world. The School also participates in regional initiatives through its Partnership Programme, which aims to facilitate links with trade, industry and students.

There are around 7,000 students at the School every year. The Business Programme and the Master's Degree Programme in Law are among the most popular programmes of their kind in the country.

The first dean of the school was the legendary polar scientist Otto Norden-skjöld, who at the beginning of the 20th century led Sweden's first expedition to the Antarctic.

## Extensive research on learning and learning strategies



The Faculty of Education includes a wide range of teaching and research in life-long learning, from the early years to senior citizens: pre-school, primary, secondary, higher education and adult education. In the Department of Education research activities mostly deal with school organisation, educational planning and the implementation and evaluation of educational projects. Other areas include special education, pre-school education and subject-related didactics such as mathematics, foreign languages and physics. Research is also done into pupils' knowledge acquisition, aptitude for higher education and questions relating to the study situation of adults.

Teachers in craft and home economics are trained in the Department of Home Economics. Research is carried out in the following areas: food choice, consumer and household behaviour, food and the environment and resource management in households.

The Department of Work Science offers courses and research in conflict theory and conflict resolution, environment and health and in international studies of working life.



## *The Teacher Training Programmes*

# A wide choice for teacher trainees

At Göteborg University teacher training has a special position as a shared responsibility that concerns the whole University. Teacher training programmes are governed by a special board: the Education and Research Board for Teacher Training. The choice for teacher trainees is unusually wide at Göteborg University. You can train as a teacher of Art, Economics, Science, the Humanities, the Social Sciences etc. Students are also given the opportunity to do graduate studies.

There are two ways to enter the programme: some students choose a subject or subject area on entry. Other students, who have not yet decided what to specialise in, can choose general entry. These students do part of the general programme first and choose a subject or subject area later.



## To break new boundaries



The IT University is a network and a meeting place for all IT related research and education at Göteborg University and Chalmers University of Technology. It is the task of the IT University to generate new, innovative and interdisciplinary research and training, which will be of strategic importance for the region and for the future of IT and communication in society. In new buildings in the Lindholmen Science Park, new interdisciplinary study programmes and research areas have been developed, whose ambition it is to break new boundaries and to develop new technologies and, in particular, their practical applications.



A teacher who wants to learn about mobile technology, an engineer who wants to study the human being, a musician who wants to develop his art with the help of a computer, or an economist who wants to analyse the uses of IT in health issues, will all find something of interest to focus on in the many programmes at the IT University. The IT University is also a dynamic and flexible resource for businesses and organisations which need to enhance their IT expertise, and develop their products and potential.



# The University Library

The Göteborg University Library is one of the largest and most advanced libraries in Sweden. It is groundbreaking in Europe when it comes to the development of e-books and e-magazines.

The library has approximately 16,000 e-magazines, 25,000 e-books and databases. The number of electronic loans, where an article or a whole book is downloaded, has now overtaken the number of paper loans, even though the latter keeps increasing as well.

The University Library consists of seven libraries each focusing on a special subject area, and a biomedical learning centre in the Sahlgrenska Academy: the Central Library, the Biomedical Library, the Botanical and Environmental Library, the Economics Library, the Earth Sciences Library, the Undergraduate and Newspaper Library and the Education Library. The University Library has several special studios for the visually impaired, equipped with enlargement programs, speech synthesis, spelling programs, scanner and printer. There are also Braille printers and displays. The libraries are visited by 8,000 people every day.

The Göteborg University Library is involved in several collaborative projects internationally. It is, for instance, working with Bibliotheca Alexandrina in order to assist the Egyptian library in the introduction of a new computer system.



# *Facts and Figures*



About 51,000 students in undergraduate education

3,700 postgraduates

2,400 active research students

283 completed doctoral degrees

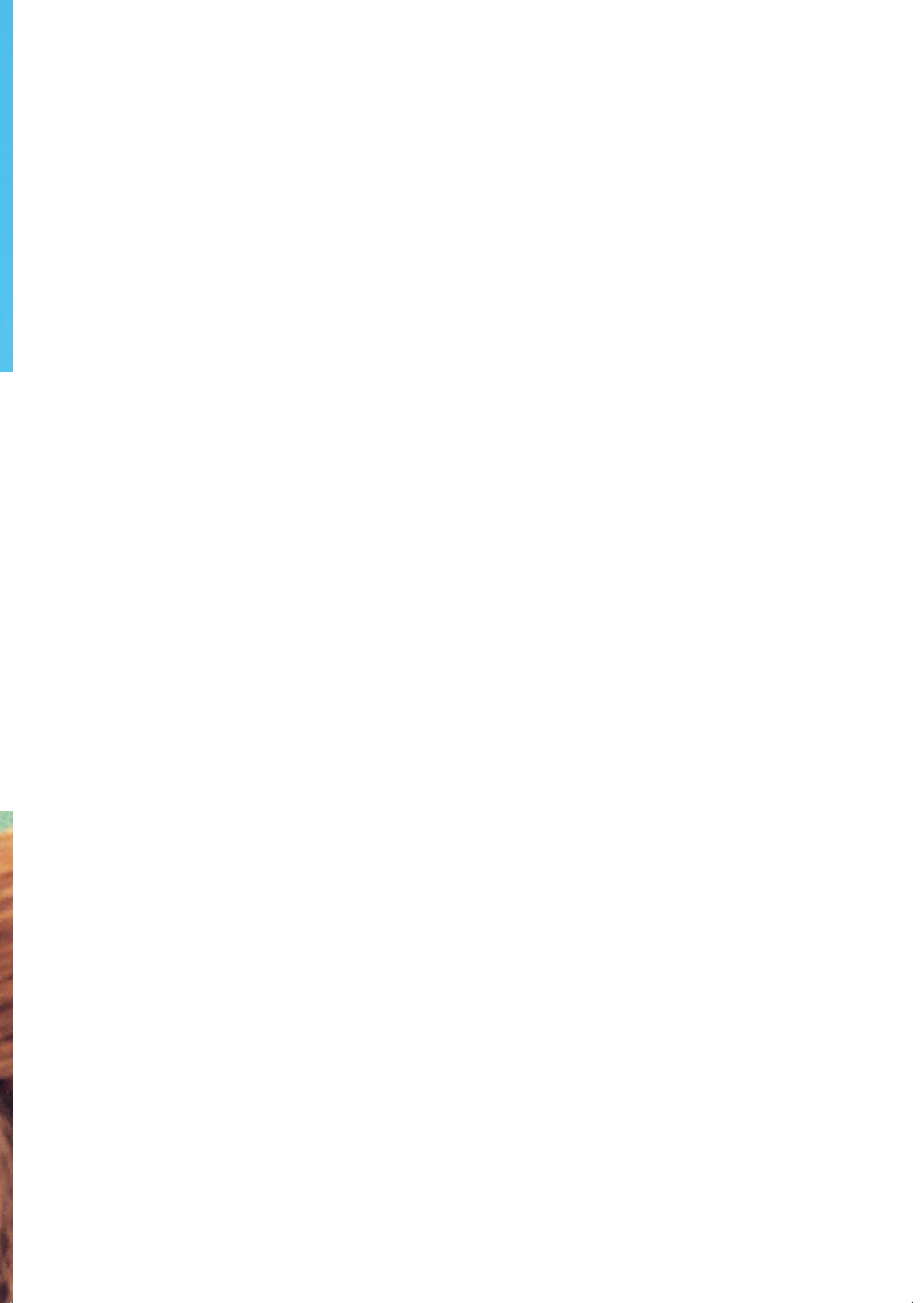
5,470 employees

2,460 teachers/researchers/post-graduate students

465 professors and 1,800 technical/administrative staff

*The information is based on the annual report 2004.*







# Addresses

## **Göteborg University**

Box 100, SE 405 30 Göteborg  
Visiting address: Vasaparken  
Phone: +46 (0)31 773 10 00  
[www.gu.se](http://www.gu.se)

## **Exchange Student Services**

Box 100, SE 405 30 Göteborg  
Visiting address:  
Karl Gustavsgatan 29  
Phone: +46 (0)31 773 10 56  
Fax: +46 (0)31 773 51 26  
E-mail: [ess@gu.se](mailto:ess@gu.se)

## **International Office**

Box 100, SE 405 30 Göteborg  
Visiting address:  
Erik Dahlbergsgatan 11 B  
Phone: +46 (0)31 773 10 00  
Fax: +46 (0)31 773 44 73  
E-mail: [internationaloffice@gu.se](mailto:internationaloffice@gu.se)

## **Admissions office**

Box 100, SE 405 30 Göteborg  
Visiting address:  
Karl Gustavsgatan 29  
Phone: +46 (0)31 773 18 55  
Fax: +46 (0)31 773 43 87  
E-mail: [antagning@adm.gu.se](mailto:antagning@adm.gu.se)

## **Study Information Office**

Box 100, SE 405 30 Göteborg  
Visiting address:  
Karl Gustavsgatan 29  
Phone: +46 (0)31 773 10 50  
Fax: +46 (0)31 773 43 88  
E-mail: [study.info@adm.gu.se](mailto:study.info@adm.gu.se)

## **Faculty Boards and Departments**

### **The Sahlgrenska Academy**

Faculty Offices for Medicine,  
Odontology and Health and  
Caring Sciences  
Box 400, SE 405 30 Göteborg  
Phone: +46 (0)31 773 10 00  
Fax: +46 (0)31 82 58 92  
[www.sahlgrenska.gu.se](http://www.sahlgrenska.gu.se)

### **Faculty of Science**

Box 460, SE 405 30 Göteborg  
Phone: +46 (0)31 773 10 00  
Fax: +46 (0)31 773 48 39  
[www.science.gu.se](http://www.science.gu.se)

### **Faculty of Arts**

Box 200, SE 405 30 Göteborg  
Phone: +46 (0)31 773 10 00  
Fax: +46 (0)31 773 11 44  
<http://hum.gu.se>

### **Faculty Office for Fine and Applied Arts**

Box 141, SE 405 30 Göteborg  
Phone: +46 (0)31 773 10 00  
Fax: +46 (0)31 773 13 18  
[www.konst.gu.se](http://www.konst.gu.se)

### **Faculty of Social Sciences**

Box 720, SE 405 30 Göteborg  
Phone: +46 (0)31 773 10 00  
Fax: +46 (0)31 773 19 40  
[www.samfak.gu.se](http://www.samfak.gu.se)

### **School of Business, Economics and Law at Göteborg University**

Box 600, SE 405 30 Göteborg  
Phone: +46 (0)31 773 10 00  
Fax: +46 (0)31 773 49 70  
[www.handels.gu.se](http://www.handels.gu.se)

### **Faculty of Education**

Box 300, SE 405 30 Göteborg  
Phone: +46 (0)31 773 10 00  
Fax: +46 (0)31 773 21 00  
[www.ped.gu.se](http://www.ped.gu.se)

## **IT University**

Box 8718, SE 402 75 Göteborg  
Phone: +46 (0)31 772 48 95  
Fax: +46 (0)31 772 48 99  
[www.ituniversitetet.se](http://www.ituniversitetet.se)

## **UFL, The Education and Research Board for Teacher Training**

Box 100, SE 405 30 Göteborg  
Phone: +46 (0)31 773 10 00  
Fax: +46 (0)31 773 55 15  
[www.ufl.gu.se](http://www.ufl.gu.se)

## **University Library**

Box 222, SE 405 30 Göteborg  
Phone: +46 (0)31 773 17 49  
Fax: +46 (0)31 773 44 11  
[www.ub.gu.se](http://www.ub.gu.se)

## **National Agency for Higher Education**

Box 7851, SE 103 99 Stockholm  
Phone: +46 (0)8 563 085 00  
Fax: +46 (0)8 563 085 50  
E-mail: [hsv@hsv.se](mailto:hsv@hsv.se)  
[www.hsv.se/english](http://www.hsv.se/english)

## **National Admissions Office to Higher Education (VHS)**

Box 24 070, SE 104 50 Stockholm  
Phone: +46 (0)8 725 96 00  
Fax: +46 (0)8 725 96 01  
E-mail: [info@vhs.se](mailto:info@vhs.se)  
[www.vhs.se](http://www.vhs.se)

## **The Swedish Institute**

Box 7434, SE 103 91 Stockholm  
Phone: +46 (0)8 453 78 00  
Fax: +46 (0)8 20 72 48  
E-mail: [si@si.se](mailto:si@si.se)  
[www.si.se](http://www.si.se)

## **The Swedish Migration Board**

SE 601 70 Norrköping  
Phone: +46 (0)11 15 60 00  
Fax: +46 (0)11 10 81 55  
E-mail:  
[migrationsverket@migrationsverket.se](mailto:migrationsverket@migrationsverket.se)  
[www.migrationsverket.se](http://www.migrationsverket.se)