

Romania

KEY INDICATORS

Population 21 531 732

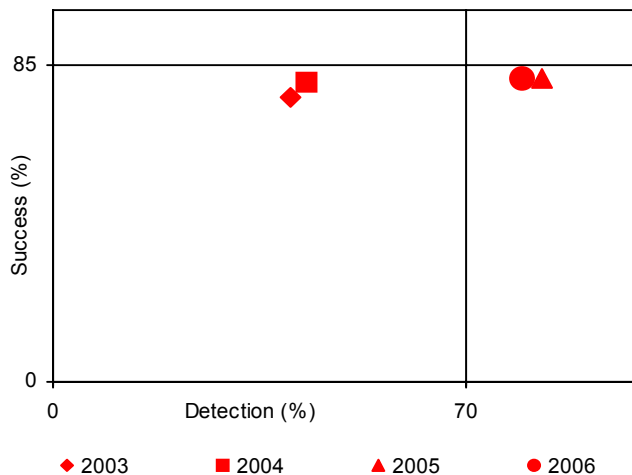
TB burden (2006 estimates)

Incidence (all cases/100 000 pop/yr)	128
Trend in incidence rate (%/yr, 2005-2006)	-4.8
Incidence (ss+/100 000/yr)	57
Prevalence (all cases/100 000 pop/yr)	140
Mortality (deaths/100 000 pop/yr)	17
Of new TB cases, % HIV+	0.3
Of new TB cases, % MDR-TB	2.8
Of previously treated TB cases, % MDR-TB	11

Surveillance and DOTS implementation (2006)

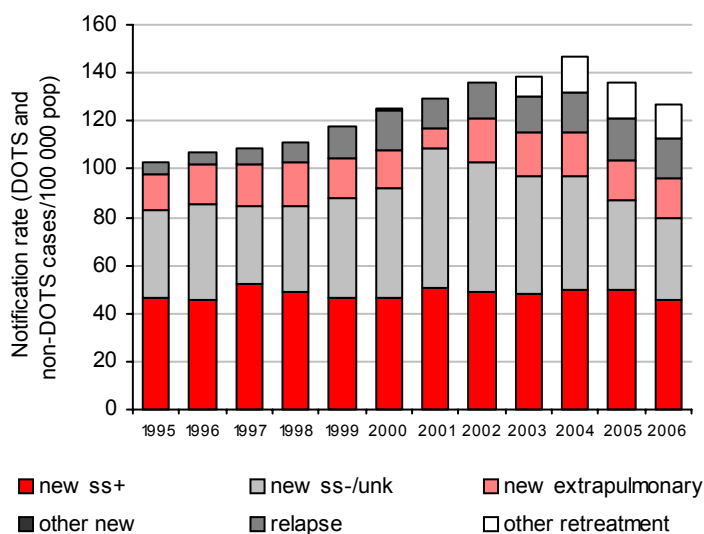
Notification rate (new and relapse/100 000 pop/yr)	113
Notification rate (new ss+/100 000 pop/yr)	46
Case detection rate (all new cases, %)	75
Case detection rate (new ss+ cases, %)	79
DOTS notification rate (new and relapse/100 000 pop/yr)	113
DOTS notification rate (new ss+/100 000 pop/yr)	46
DOTS case detection rate (all new cases, %)	75
DOTS case detection rate (ss+ cases, %)	79
DOTS treatment success (2005 cohort, %)	82

DOTS new ss+ case detection and treatment success



SURVEILLANCE AND EPIDEMIOLOGY

Case notifications



Case notifications by age and sex, 2006



Pop indicates population; ss+, smear-positive; ss-, smear-negative; unk, pulmonary smear not done or result unknown; yr, year; --, not available.

Population estimate from World population prospects – the 2006 revision. New York, United Nations Population Division, 2007.

Incidence, prevalence and mortality estimates include TB in people with HIV.

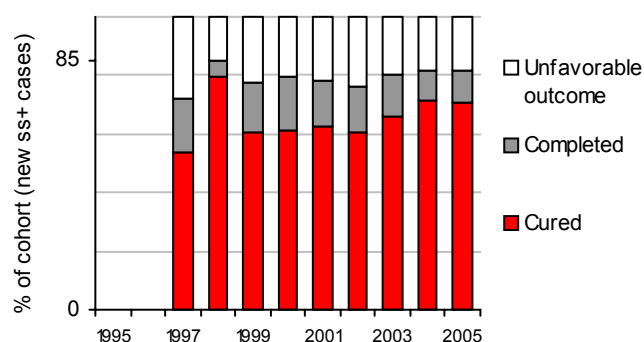
Estimates of prevalence of MDR-TB are from Anti-tuberculosis drug resistance in the world. Fourth global report. The WHO/IUATLD Global Project on Anti-tuberculosis Drug Resistance Surveillance. Geneva, 2008. World Health Organization. WHO/HTM/TB/2008.394. Estimates shown in regular type are survey data; estimates in italics are estimates based on multivariate regression analysis. For further details, see Annex 2 of WHO Report 2008, Global Tuberculosis Control: Surveillance, Planning, Financing. WHO/HTM/TB/2008.393. (www.who.int/tb/publications/global_report)

TB profile for Romania, continued.

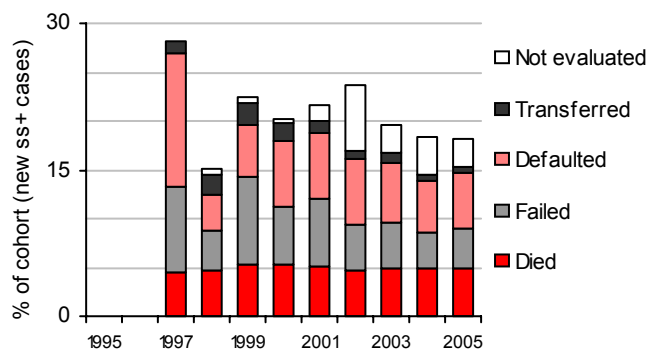
MONITORING DOTS

	1995	1996	1997	1998	1999	2000	2001	2002	2003	2004	2005	2006
DOTS coverage (%)	--	0.0	0.0	100	4.0	11	34	54	54	54	100	100
Notification rate (new & relapse/100 000 pop)	--	--	--	115	5.1	14	16	75	68	69	121	113
Notification rate (new ss+/100 000 pop)	--	--	--	49	2.3	5.8	6.7	28	26	27	50	46
Case detection rate (all new cases, %)	--	--	--	86	3.3	8.9	9.8	46	41	43	77	75
Case detection rate (new ss+, %)	--	--	--	87	3.9	9.5	10	42	40	43	83	79
Case detection rate within DOTS (new ss+, %)	--	--	--	87	99	86	31	79	74	80	83	79
Treatment success (new ss+, %)	--	--	72	85	78	80	78	76	80	82	82	--

Treatment success, DOTS



Unfavorable treatment outcomes, DOTS



Incidence estimates for all years are re-calculated as new information becomes available and techniques are refined, so case detection rates shown here may differ from those published previously.