
ILLUSTRATIONS

NATO's Civil and Military Structure

Principal NATO Committees

Principal Institutions of Partnership Cooperation and Dialogue

The NATO International Staff

Divisions of the International Staff

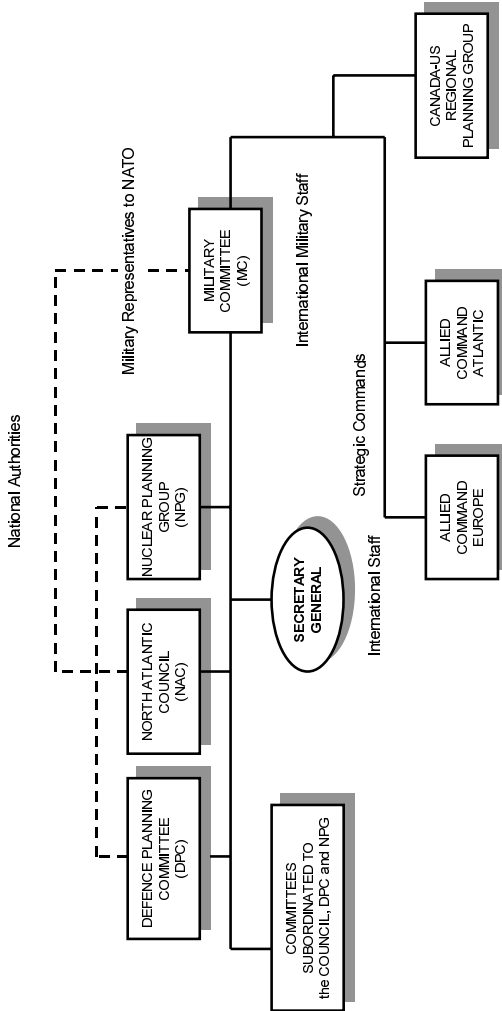
NATO's Military Structure

The Military Structure - Allied Command Europe

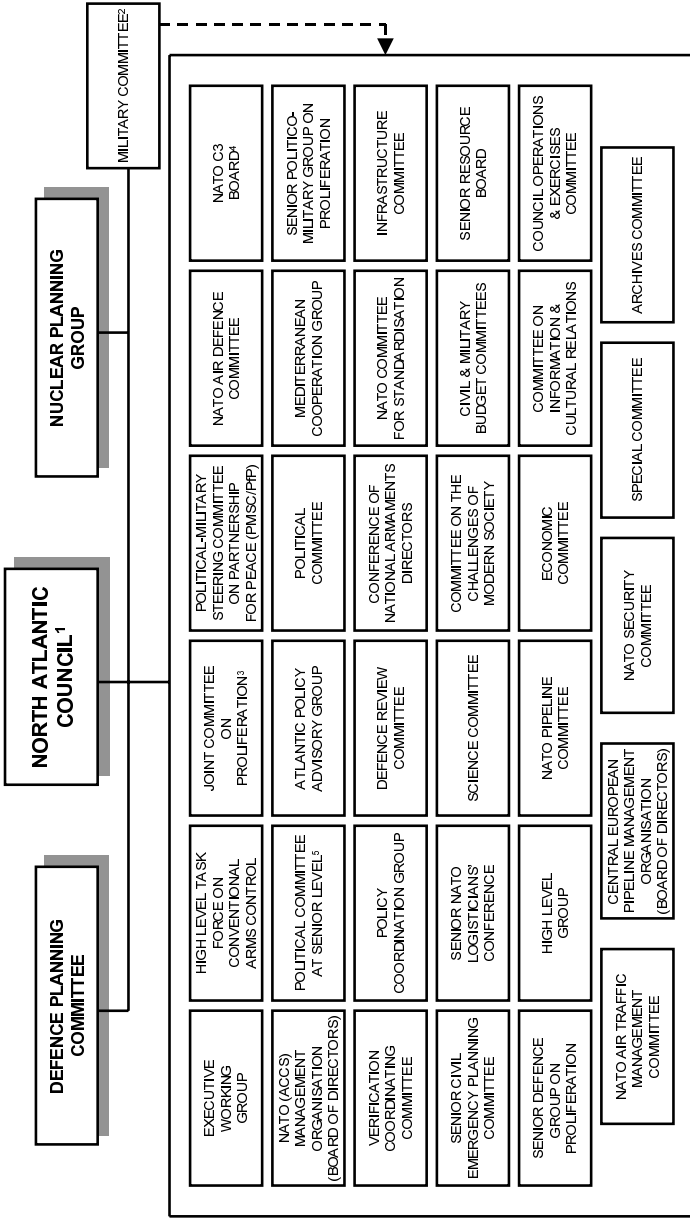
The Military Structure - Allied Command Atlantic

The International Military Staff

NATO's Civil and Military Structure



Principal NATO Committees



(1) Most of the above committees report to the Council. Some are responsible to the Defence Planning Committee or Nuclear Planning Group. Certain committees are joint civil and military bodies which report both to the Council, Defence Planning Committee or Nuclear Planning Group, and to the Military Committee.
 (2) The Military Committee is subordinate to the North Atlantic Council and Defence Planning Committee but has a special status as the senior military authority in NATO. The role of the Military Committee is described in Chapter 11.
 (3) Senior Politico-Military Group on Proliferation plus Senior Defence Group on Proliferation.
 (4) NATO C3 (Consultation, Command and Control) Board
 (5) Reinforced with experts as required.

Principal Institutions of Partnership Cooperation and Dialogue

EURO-ATLANTIC
PARTNERSHIP
COUNCIL
(EAPC)¹

NATO-RUSSIA/
PERMANENT
JOINT
COUNCIL
(PJC)

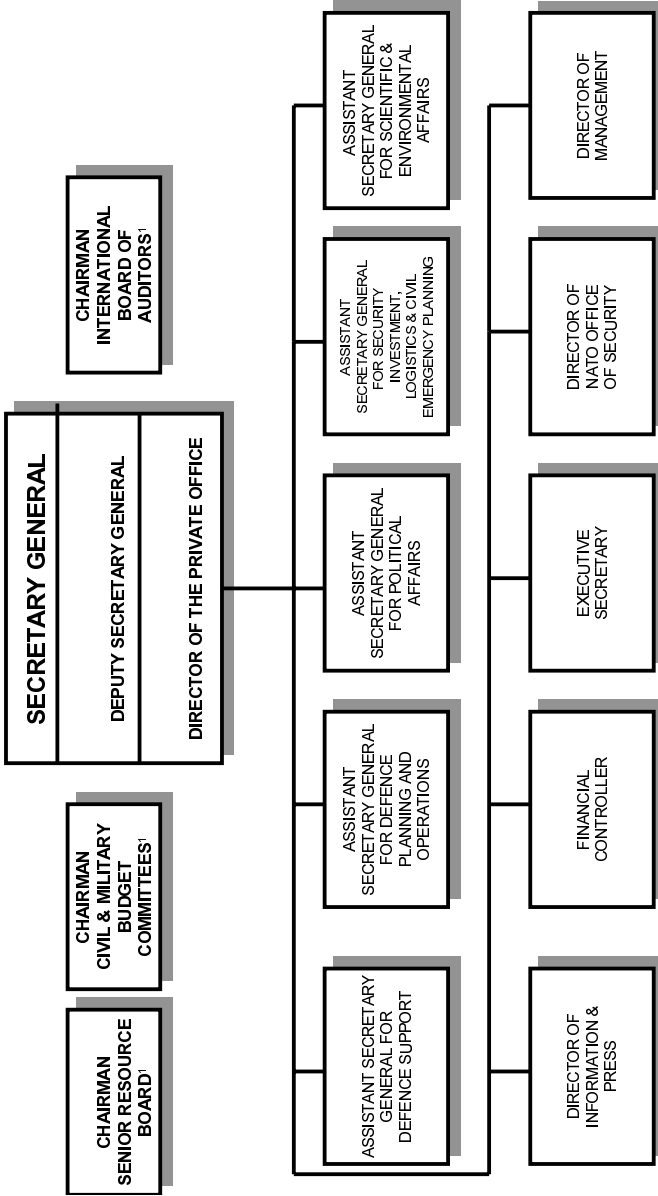
NATO-UKRAINE
COMMISSION
(NUC)

MEDITERRANEAN
COOPERATION
GROUP
(MCG)²

(1) Many NATO Committees regularly meet in EAPC or Partnership for Peace format (see Principal NATO Committees).

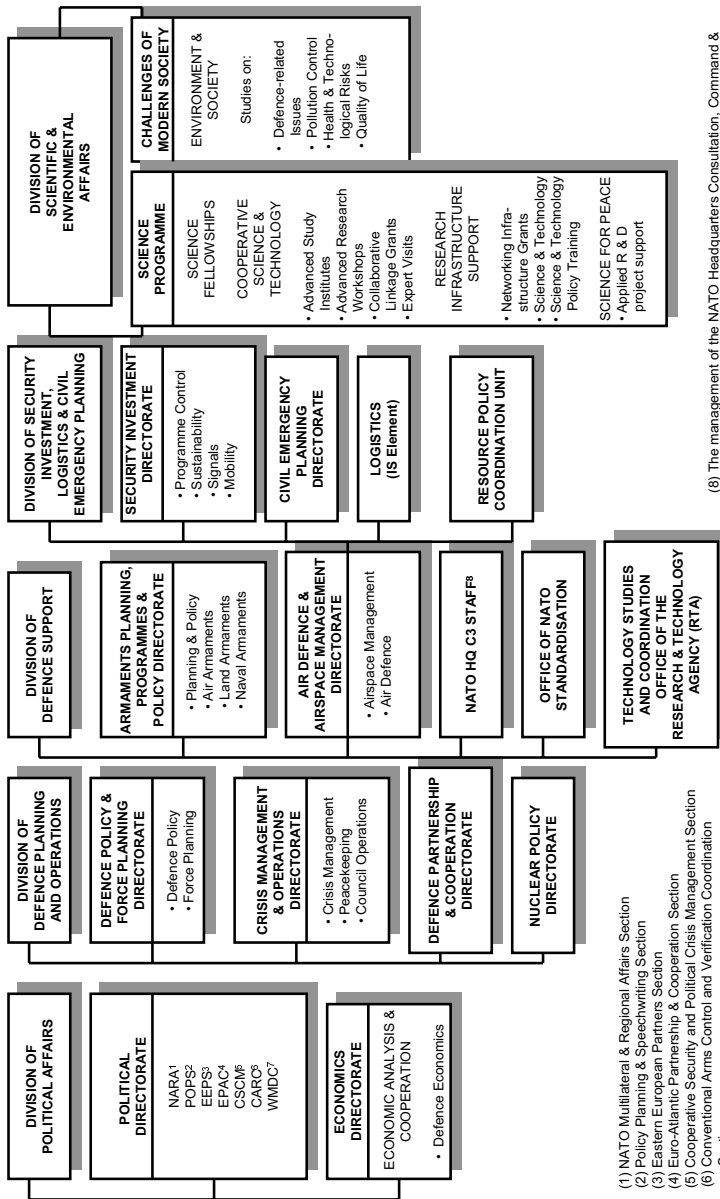
(2) In addition to meetings among Allies, the Mediterranean Cooperation Group also meets with representatives of countries participating in the Alliance's Mediterranean Dialogue.

The NATO International Staff



(1) These positions are not filled by members of the International Staff but by national chairmen appointed by the Council.

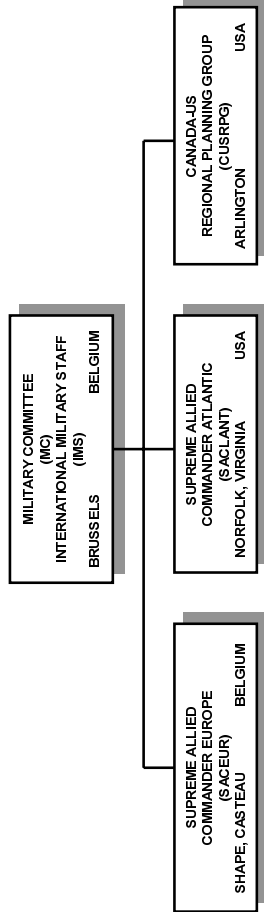
Divisions of the International Staff



- (1) NATO Multilateral & Regional Affairs Section
- (2) Policy Planning & Speechwriting Section
- (3) Eastern European Partners Section
- (4) Euro-Atlantic Partnership & Cooperation Section
- (5) Cooperative Security and Political Crisis Management Section
- (6) Conventional Arms Control and Verification Coordination Section
- (7) Weapons of Mass Destruction Centre

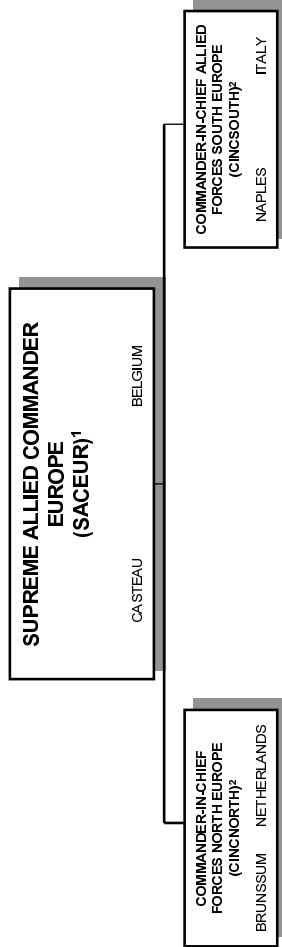
(8) The management of the NATO Headquarters Consultation, Command & Control (C3) Staff is a coordinated civil/military responsibility and comes under the authority of both the Assistant Secretary General for Defence Support and the Director of IMS.

NATO's Military Structure



The Military Structure

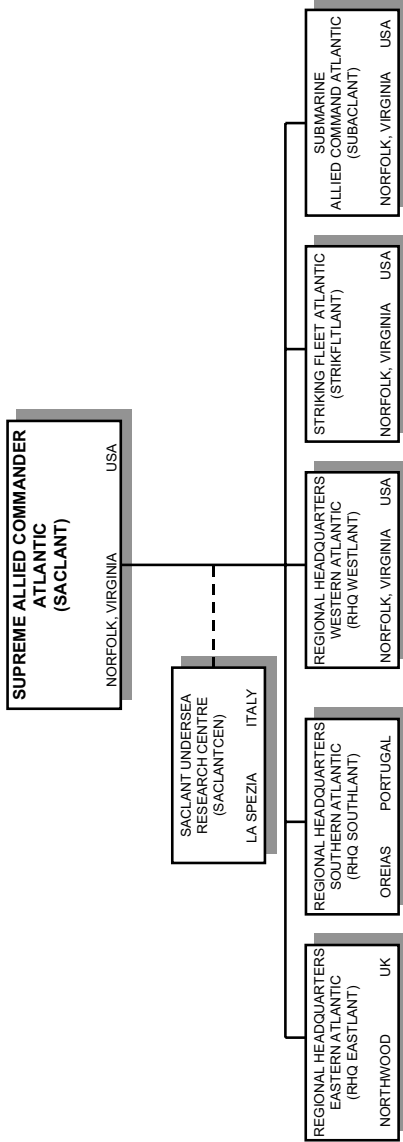
ALLIED COMMAND EUROPE



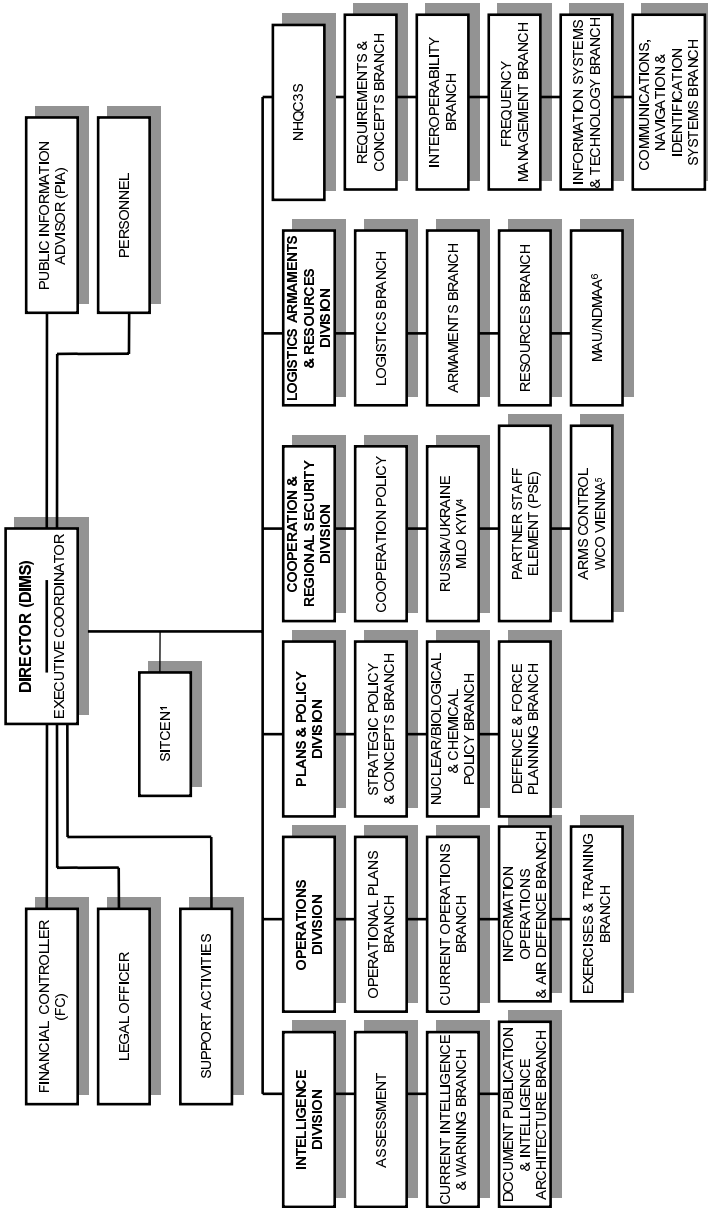
(1) Strategic Commander
(2) Regional Commander

The Military Structure

ALLIED COMMAND ATLANTIC



The International Military Staff



(1) The Situation Centre (SITCEN) reports to the Assistant Secretary General for Defence Planning & Operations but is directed on a day-to-day basis by the Director of the International Military Staff.

(2) The Information Systems and Technology Branch serves both the International Staff and International Military Staff.

(3) The NATO Headquarters Consultation, Command and Control (C3) Staff is managed jointly by the Director (IMS) and the Assistant Secretary General for Defence Support.

(4) MLO: Military Liaison Office.

(5) WCO: Western Consultation Office.

(6) Management Advisory Unit/NATO Defence Manpower Advisory Authority.

