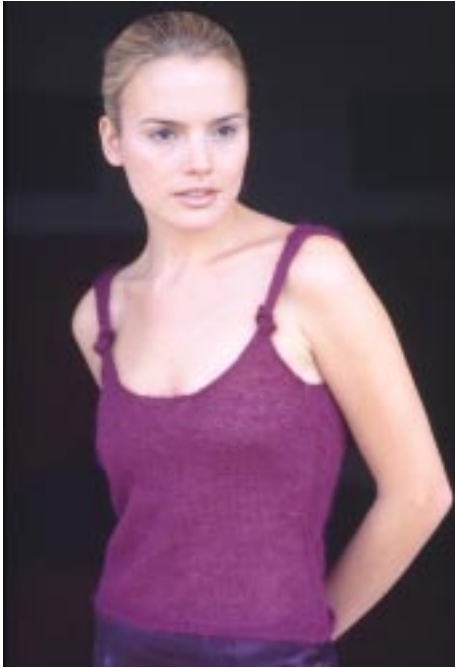


Charlotte

KIM HARGREAVES



YARN

Rowan Kidsilk Haze

	XS	S	M	L	XL	
To fit bust	81	86	91	97	102	cm
	32	34	36	38	40	in
	2	2	2	2	2	x 25gm

(photographed in Poison 594)

NEEDLES

1 pair 3mm (no 11) (US 2/3) needles
1 pair 3¼mm (no 10) (US 3) needles

TENSION

25 sts and 34 rows to 10 cm measured over stocking stitch using 3¼mm (US 3) needles.

The instructions are given for the smallest size. Where they vary, work the figures in brackets for the larger sizes. One set of figures refers to all sizes.

BACK and FRONT (both alike)

Cast on 96 (102: 108: 114: 120) sts using 3mm (US 2/3) needles.

Beg with a P row, work in rev st st for 4 rows. Place markers at both ends of last row.

Beg with a K row, work in st st as folls:

Work 6 (8: 8: 10: 10) rows.



Change to 3¼mm (US 3) needles.

Dec 1 st at each end of next and every foll 6th row until 86 (92: 98: 104: 110) sts rem.

Work 9 (11: 11: 11: 11) rows, ending with a WS row.

Inc 1 st at each end of next and every foll 8th row to 94 (100: 106: 112: 118) sts, then on every foll 6th row until there are 102 (108: 114: 120: 126) sts.

Cont straight until work measures 28 (29: 29: 30: 30) cm from markers, ending with a WS row.

Shape neck

Next row (RS): K43 (45: 48: 50: 53), pick up loop lying between needles and place loop on right needle (**note**: this loop does NOT count as a st), sl next st knitwise and turn, leaving rem sts on a holder. 44 (46: 49: 51: 54) sts.

Work each side of neck separately.

Next row: P tog first st and the loop, P1, P2tog tbl, P to end.

Next row: K to last 4 sts, K2tog tbl, K1, pick up loop lying between needles and place loop on right needle, sl last st knitwise.

Next row: P tog first st and the loop, P1, P2tog tbl, P to end. 41 (43: 46: 48: 51) sts.

Last 2 rows form neck slip st edging and set decreases.

Keeping neck edging and decreases correct as set, cont as folls:

Shape armhole

Cast off 7 (8: 8: 9: 9) sts at beg and dec 1 st at end of next row. 33 (34: 37: 38: 41) sts.

Next row (WS): P tog first st and the loop, P1, P2tog tbl, P to last st, pick up loop lying between needles and place loop on right needle (note: this loop does NOT count as a st), sl last st purlwise.

Next row: K tog tbl first st and the loop, K1, K2tog, K to last 4 sts, K2tog tbl, K1, pick up loop lying between needles and place loop on right needle, sl last st knitwise.

Next row: P tog first st and the loop, P1, P2tog tbl, P to last 4 sts, P2tog, P1, pick up loop lying between needles and place loop on right needle, sl last st purlwise. 28 (29: 32: 33: 36) sts.

Last 2 rows form armhole slip st edging and set decreases.

Keeping all edgings and decreases correct as set, cont as folls:

Dec 1 st at neck edge of next and foll 2 alt rows, then on 3 foll 4th rows **and at same time** dec 1 st at armhole edge of next 3 (3: 5: 5: 7) rows, then on foll 5 (6: 6: 7: 7) alt rows. 14 (14: 15: 15: 16) sts. Cont straight until armhole measures 28 (28: 29: 29: 30) cm, ending with a WS row.

Shape shoulder

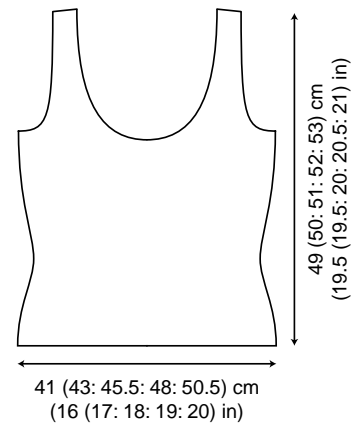
Cast off rem 14 (14: 15: 15: 16) sts.

With RS facing, rejoin yarn to rem sts, cast off centre 14 (16: 16: 18: 18) sts, K to end.

Complete to match first side, reversing shapings and decreases.

MAKING UP

PRESS all pieces carefully using a warm iron over a damp cloth. Tie a knot in each shoulder strap as in photograph and slip stitch in place. Join shoulder seams using back stitch, or mattress st if preferred. Join side seams.



ABBREVIATIONS

K	knit
P	purl
st(s)	stitch(es)
inc	increas(e)(ing)
dec	decreas(e)(ing)
st st	stocking stitch (1 row K, 1 row P)
garter st	garter stitch (K every row)
beg	begin(ning)
foll	following
rem	remain(ing)
rev	revers(e)(ing)
rep	repeat
alt	alternate
cont	continue
patt	pattern
tog	together
mm	millimetres
cm	centimetres
in(s)	inch(es)
RS	right side
WS	wrong side
sl1	slip one sticth
psso	pass slipped stitch over
tbl	through back of loop
M1	make one stitch by picking up horizontal loop before next stitch and knitting into back of it
yfwd	yarn forward
yrn	yarn round needle
yon	yarn over needle
cn	cable needle