

# Flexi8

# FlexiSIGN-PRO™

## Intuitive & Powerful

- The user interface has been long renowned for its ease-of-use.
- The industry's most powerful layout and output package.
- Complete layout, Vinyl Cutting and Digital Printing capabilities all in one streamlined package.
- Seamless Print & Cut design and output.

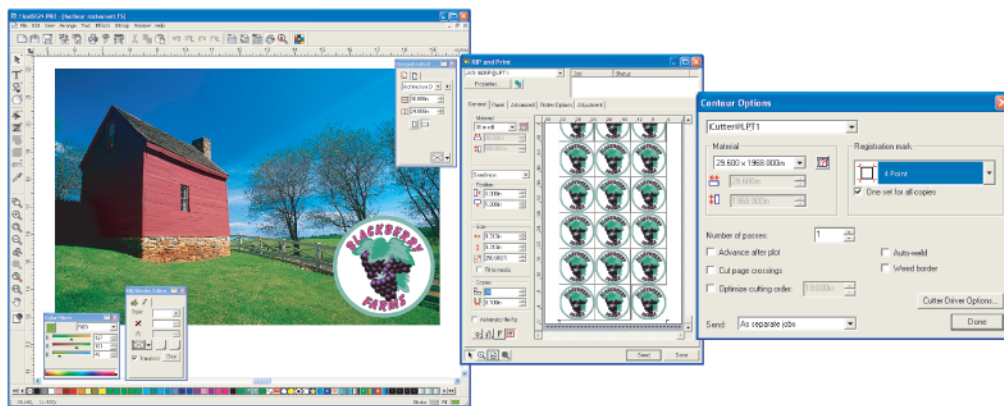
## Recommended

- Windows XP  
OR
  - Mac OSX 10.4
    - Mac G4 or Higher
- PLUS
- 512 MB RAM
  - 4 GB Working space
  - 24-bit 1024x768 video
  - CD-ROM or DVD Drive
  - Available USB port for key
  - Internet connection
  - Available port connection for each output device

## The Next Step

- Upgrade a lower level of Flexi to FlexiSIGN-PRO.
- Upgrade an older version of FlexiSIGN-PRO.
- Exchange a competitive software package to FlexiSIGN-PRO.

SAI's flagship product, FlexiSIGN-PRO offers the total solution for any sign making business. This complete software package offers a full set of design, cutting, RIPing and printing tools for maximum productivity.



## Is FlexiSIGN-PRO Right For You?

### Benefits

- The industry standard for sign making software.
- A complete solution for design and output of both vinyl and digital print graphics.
- SmartObjects and Smart Tools follow your design process and update automatically for maximum productivity.
- Quickly and accurately vectorize colored or grayscale bitmap artwork with the most powerful vectorization and cleanup on the market.
- Create decals quickly and accurately with the industry's most precise Print & Cut to a hybrid or virtual hybrid printer/cutter combination.
- "Send To EnRoute" command seamlessly integrates your design into EnRoute for dimensional sign output.

### Features

- Configure printer and cutter setups for out-of-the box production for over 1000 devices.
- More than 400 "Certified" ICC Output Profiles are included to give you the print results you want.
- The strongest import filters in the industry give you the flexibility to import from the most popular design applications.

## Adobe® RIP Engine

Thanks to an exclusive license, FlexiSIGN-PRO 8 is one of the only solutions on the market offering a seamlessly integrated, Genuine Adobe PostScript® RIP Engine, guaranteeing Accuracy, Reliability and Compatibility.



formerly Scanvec Amiable

# Flexi8

## Top 30 Features

	FlexiSIGN-PRO	FlexiEXPERT	FlexiPRINT & CUT	FlexiSIGN	FlexiLETTER	FlexiDESIGNER
DesignCentral Interactive Window	✓	✓	✓	✓	✓	✓
DesignEditor Interactive Window	✓	✓	New	✓		✓
Fill / Stroke Interactive Window	✓	✓	✓	✓	✓	✓
Workspace Profiles	✓	✓	✓	✓	✓	✓
Import & Export Standard File Formats	Improved	Improved	Improved	Improved	Improved	Improved
Export as Adobe® PDF	New	New	New	New	New	New
On Screen Spell Check	New	New	New	New	New	New
True Shape Nesting	✓	Optional	Optional	Optional	Optional	Optional
Send To EnRoute	Improved	Improved	Improved	Improved	Improved	Improved
TrueType and Type 1 Font Support	✓	✓	✓	✓	✓	✓
AutoTrace Vectorization	✓	✓	New	✓		✓
ColorTrace Vectorization	✓	✓				✓
Distortions	✓	✓	✓	✓	✓	✓
Job Information	Improved	Improved	✓	✓	✓	Improved
Job Estimation with Estimation Editor	✓	✓				✓
Templates with Template Editor	Improved	Improved				Improved
Auto Serialize Variable Data	✓	✓				✓
Graphic / Text Styles	✓	✓	New	✓		
Gradients - Spot Color, RGB, CMYK	✓	✓	New	✓		✓
Color Trapping	✓	✓	New	✓		✓
Underbase / Finisher	✓					✓
Adobe® Plug In Filter Support	Improved					Improved
Smooth Screen Display	New	New	New	New	New	New
Mask/Unmask	✓	New	New	New	New	✓
ICC Profile Creation	✓		Optional			
Utilize 3rd Party Output Profiles	✓		✓			
Select by Attribute	✓	✓	New	New	New	✓
Desktop Printing Output	Improved	Improved	Improved	Improved	Improved	Improved
Cutting Output	Improved	Improved	Improved	Improved	Improved	
Adobe® PostScript® 3	Improved		Improved			

**POWERED BY:**

**gretagmacbeth**



**For more Information or to  
Request a Demonstration, Please Contact:**

Flexi, FlexiSIGN-PRO, FlexiEXPERT, FlexiPRINT & CUT, FlexiSIGN, FlexiLETTER and FlexiDESIGNER are trademarks of SAI;  
Gerber EDGE, EDGE, EDGE 2, Omega, Graphix Advantage and Spectratone are registered trademarks of Gerber Scientific, Inc.;  
Pantone and other Pantone, Inc. trademarks are the property of Pantone, Inc.;  
Adobe and PostScript are registered trademarks of Adobe Systems, Inc.;  
All other trademarks are the property of their respective owners.

©2006 SAI. All Rights Reserved.



formerly Scanvec Amiable

2006 F8 SP DSv1

**SAI** International Plaza Two, Suite 625 Philadelphia, PA 19113-1518 USA  
Toll Free: 800-229-9068 Tel: 610-521-6300 Fax: 610-521-0111  
**E-mail: [info@SAIntl.biz](mailto:info@SAIntl.biz) Website: [www.SAIIntl.biz](http://www.SAIIntl.biz)**

**Sai Europe** Minervastraat 14 bis B-1930 Zaventem, Belgium  
Tel: +32-2-725-5295 Fax: +32-2-725-2809  
**E-mail: [info@SAIntl.be](mailto:info@SAIntl.be)**