

Design No. CEJ 481 H

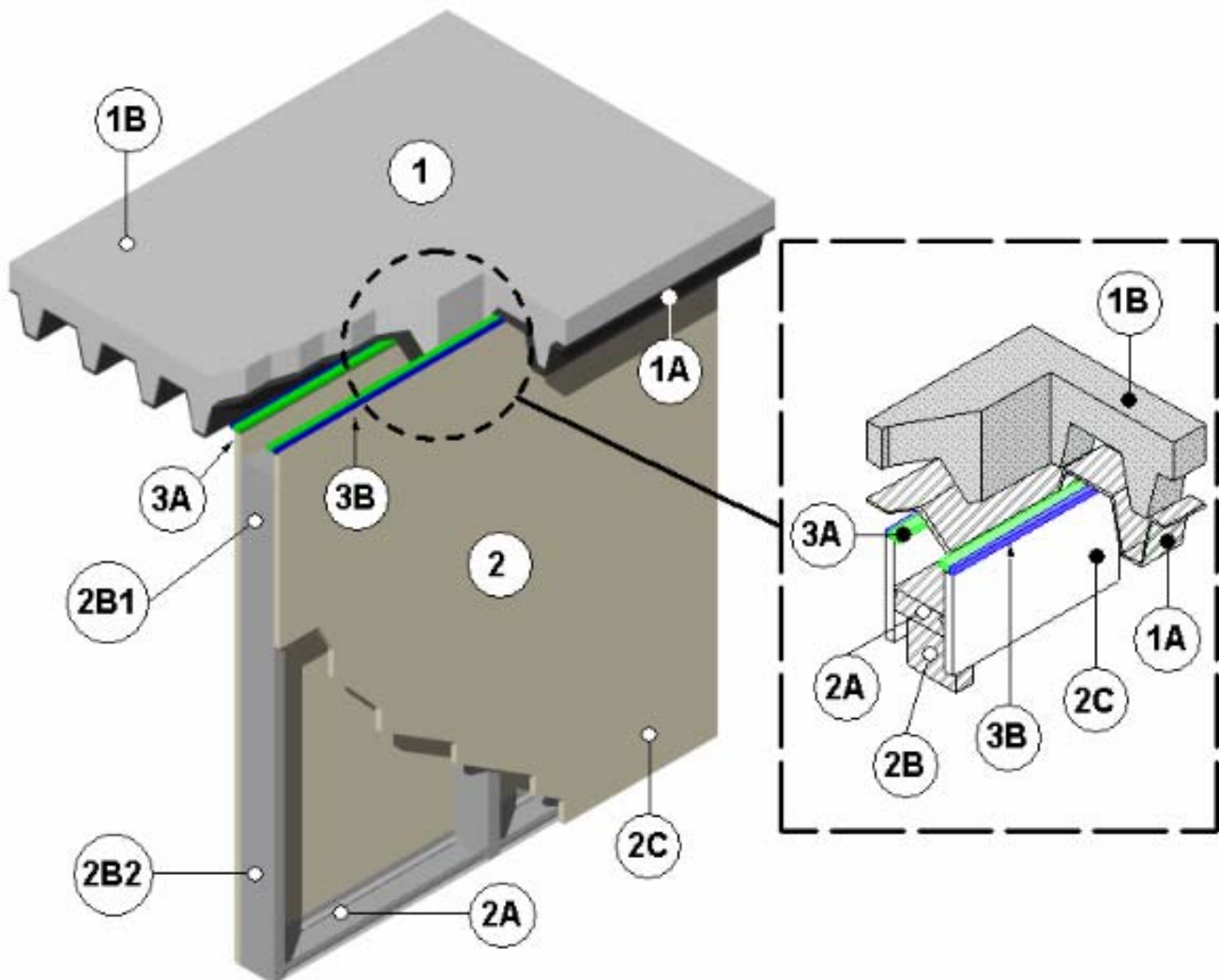
HEAD OF WALL JOINT SYSTEM

ASTM E 1966-01

T-Rating – 1 hr.

F-Rating - 1 hr.

Rated for  $\pm 18.25\%$  vertical movement



1. FLOOR ASSEMBLY – The floor assembly consists of the following:

A. Steel Floor and Steel Units – Minimum 18 GA steel fluted decking with open flutes measuring nominally 6-1/2 inches wide at the base, nominally 5-

1/4 inches wide at the top, and nominally 3 inches deep. The direction of the flutes is parallel to the top of the wall assembly (Item 2).

B. Concrete – Steel fluted decking (Item 1A) covered with normal weight

## Fire-Resistant Joint Systems

concrete (approximately 150 pcf and nominally 2000 psi) nominally 2 inches deep at its minimum thickness above the flutes in the steel fluted decking (Item 1A).

2. WALL ASSEMBLY – Non-loadbearing wall assembly positioned perpendicular to the floor ceiling assembly (Item 1) and consisting of the following:
  - A. Steel Floor Tracks and Ceiling Runners – Two “C-shaped” roll formed nominal 0.030 inch thick steel tracks nominally measuring 3-5/8 inches wide with two 1-3/8 inch vertical legs. Use nominal 3/16-inch diameter, 1-1/4-inch long, Tapcons, hexhead concrete screws, to attach one track to the bottom of a flute (parallel to the remaining flutes) in the steel fluted decking (Item 1A) on the bottom of floor ceiling assembly (Item 1) and the other track to the top of the floor assembly (Item 1) so that it is aligned plumb with the top track.

### Listed Manufacturer:

Trakloc International LLC  
358TTS-030-138 Tracks (Item 2A)

- B. Studs – Use “C-shaped” roll formed nominal 0.030 inch thick telescoping steel stud assemblies measuring 3-5/8 inches wide with two 1-3/8 inch vertical legs. Telescoping stud assembly consists of a stud (Item 2B1) and an extension stud (Item 2B2) inserted into the stud. Snap lock steel studs into the steel tracks (Item 2A) at nominal 24-inches on center.

### Listed Manufacturer:

Trakloc International LLC  
358TSA-030-114 Telescoping Stud Assembly (Item 2B)  
358TSO-030-114 Stud (Item 2B1)  
358TSE-030-114 Extension Stud (Item 2B2)

- C. Gypsum Board – Affix one layer of Type X 5/8-inch thick gypsum board affixed to each side of the telescoping stud assemblies (Item 2B) and tracks (Item 2A) using #8 1-1/2-inch bugle head screws spaced nominally 8-inches on center in the field and around the perimeter. Place no screws nominally 4-inches from the

top of the Type X 5/8-inch thick gypsum board. Create a maximum 1-inch head of wall joint at the top of the wall assembly (Item 2) by cutting the Type X 5/8-inch thick gypsum board 1 inch shorter than the height between the top of the flute in the steel fluted decking (Item 1A) and the bottom steel track (Item 2A) attached to the top of the concrete (Item 1B) in the floor assembly (Item 1).

3. JOINT TREATMENT – Maximum 1-inch joint.

- A. Joint Packing Material – Use only mineral wool bearing an Intertek Certified Product Label and meeting the following minimum requirements. Fill the joint created between the top of the flute in the steel fluted decking (Item 1A) and the top edge of the Type X 5/8-inch thick gypsum board (Item 2C) with 4 pcf mineral wool cut into two filler strips nominally measuring 1-1/2 inches wide by 3/8-inch thick by 24-inches long. Install the filler strips and compress their butt joints. Confirm nominal 1/4-inch recess from the exposed face of the Type X 5/8-inch thick gypsum board (Item 2C) to the flush face of the mineral wool insulation.

- B. FILL, VOID OR CAVITY MATERIAL – Fill the nominal 1/4-inch recess with sealant measuring minimum 1/4-inch thick. Trowel-apply sealant over all of the joint packing material (Item 3A) overlapping the sealant onto the Type X 5/8-inch thick gypsum board (Item 2C) nominally 1/2 inch.

### Listed Manufacturer:

3M  
Joint Sealant  
Interam™ FireDam™ 150+ Caulk (Item 3C)