

Hard Drive Replacement Instructions

Follow the instructions in this document carefully. Failure to follow these instructions could damage your equipment and void its warranty.

Online instructions are available at <http://www.apple.com/support/diy/>.

Note: These instructions apply to different models of the MacBook (13-inch) portable computer. While some models may look slightly different from the one shown in the illustrations, the steps for all models are the same.

Backing Up Your Data

Warning: Before replacing your hard drive, make sure you back up all data on the drive.

Tools Required

The following tools are required:

- Clean, soft, lint-free cloth
- Coin
- Phillips #1 screwdriver (preferably with a long handle)
- Stiff, plastic, nonmagnetic card (such as a library card)

Opening the Computer

1. Shut down the computer.

Warning: Always shut down the computer before opening it to avoid damaging its internal components or causing injury. After you shut down the computer, the internal components can be very hot. Let the computer cool down for 30 minutes before continuing.

2. Wait 30 minutes to allow the computer's internal components to cool.
3. Unplug all external cables from the computer except the power cord.

-
4. Unplug the power cord.

Warning: The power supply in your computer is a high-voltage component and should not be opened for any reason, even when the computer is off. If the power supply needs service, contact your Apple reseller or Apple Authorized Service Provider.

5. Turn over the computer and place it on a soft cloth.
6. Use a coin to release the battery latch. Turn the coin a quarter turn clockwise to unlock the battery.



7. Lift out the battery from the battery bay.



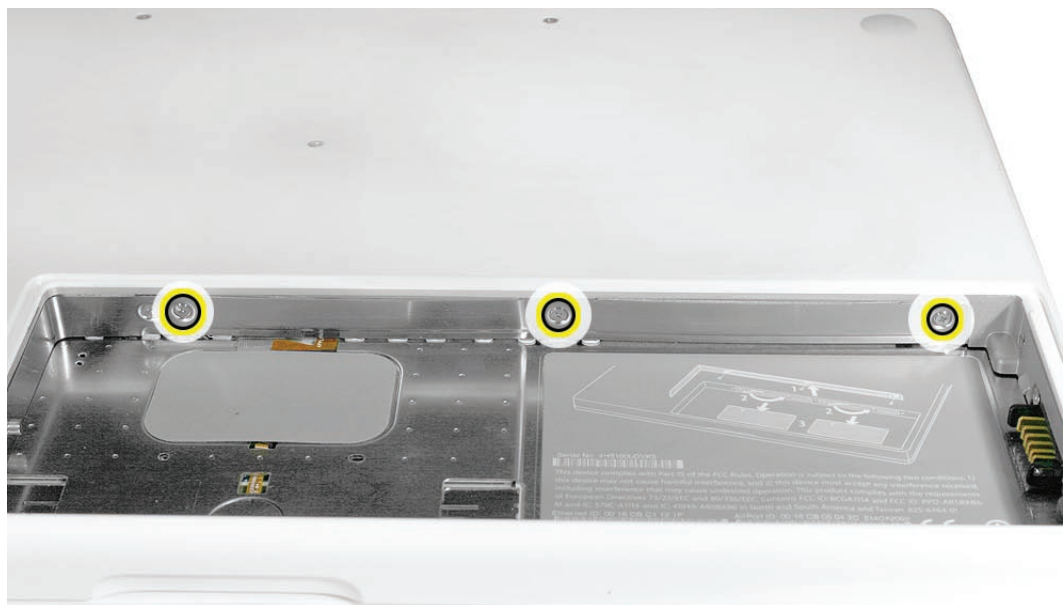
8. Touch a metal surface inside the battery bay to discharge any static electricity.
Important: Always discharge static before you touch any parts or install any components inside the computer. To avoid generating static electricity, do not walk around the room until you have finished working and closed the computer.



Removing the Hard Drive

Note: Before you can remove the hard drive, you must remove the battery and RAM door.

1. Loosen—but do not try to remove—the three captive screws along the RAM door.



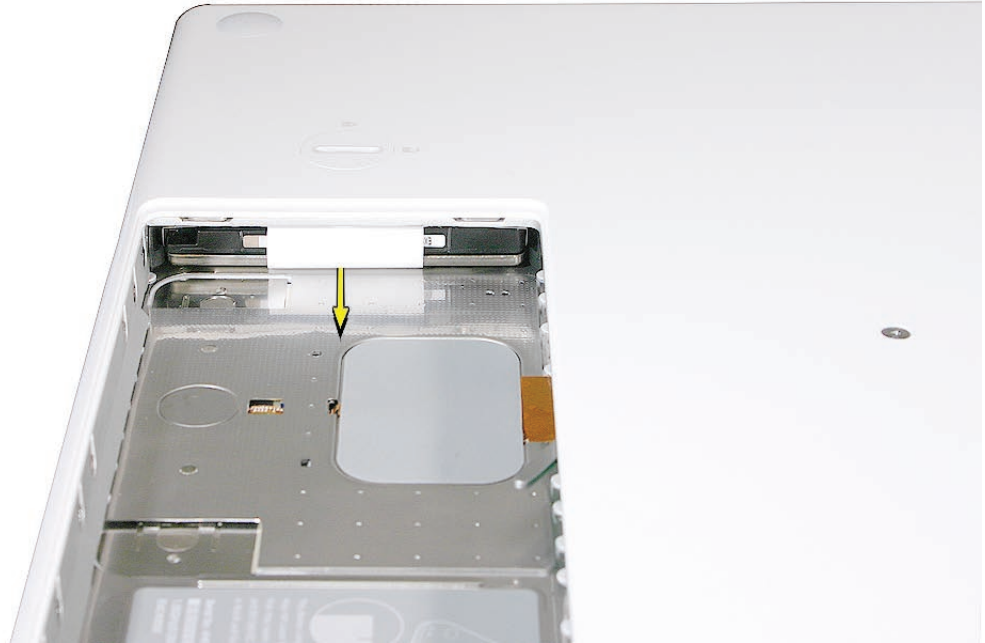
-
2. Holding the long end of the L-shaped RAM door, pivot it out from the battery bay. If necessary, use a nonmagnetic, plastic card (such as a library card) to tilt the RAM door up and out of the battery bay. Be careful not to bend the RAM door.



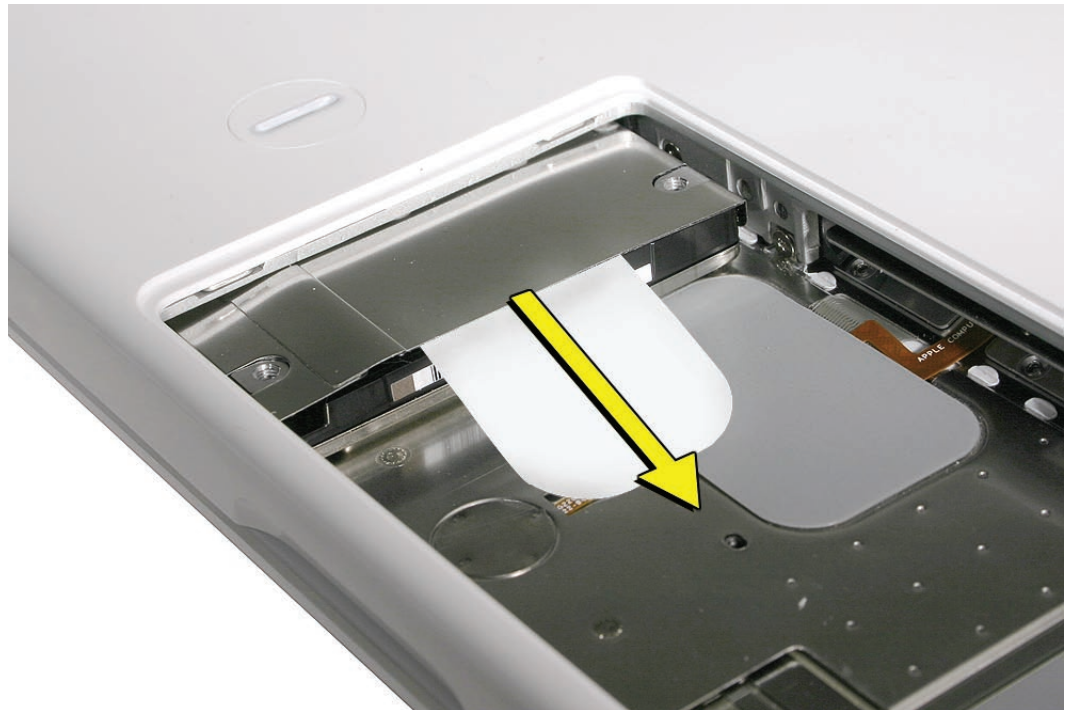
3. **Important: Remember to replace the RAM door after you have finished working inside your computer. The computer will not function properly if the RAM door is not replaced.**



4. Unroll the hard drive pull tab.



5. Pull the tab straight out to slide the drive out from the recessed rubber rails in the battery bay.



6. Hold the drive only by the sides when removing and replacing it.



Replacing the Hard Drive

1. Slide in the replacement hard drive, and tuck the pull tab underneath the drive.
2. Install the replacement RAM door by first aligning the short end at the notch near the hard drive opening.



-
3. Use a plastic card, if necessary, to tuck in the EMI gaskets located on the RAM door so they do not protrude from the edge of the battery bay. Make sure the three screws align with the holes in the bottom case before tightening them.

Closing the Computer

1. Replace the battery by tilting the foot end of the battery into the battery bay first. Then press and hold down the other end of the battery as you turn the coin to lock it into place.



2. Connect the power cord.
Warning: Never turn on the computer unless all of its internal and external parts are in place and it is closed. Operating the computer when it is open or missing parts can damage it or cause injury.
3. Restart your computer and restore the operating system that came with your computer as described in the next section.

Reinstalling the Software That Came with Your Computer

Use the software install discs that came with your computer to install Mac OS X and the applications that came with your computer.

Installing Mac OS X and Applications

To install Mac OS X and the applications that came with your computer, follow these steps:

1. Start up from the Mac OS X Install Disc 1 that came with your computer, and choose your language.
2. From the menu bar, choose Utilities > Disk Utility.
3. Open Disk Utility and select the new drive in the list to the left.
Note: If you are formatting the primary drive, use the Disk Utility program on the Install disc.
4. Click the Partition tab.
5. Click on Options, and verify GUID is selected if this is the startup drive.
6. Name the volume "Macintosh HD."
7. Apply the change by clicking the Partition button.
8. At this point, either
 - Quit the Disk Utility application, and proceed with the Mac OS X installation. Follow the onscreen instructions. After selecting the destination disk for installation, continue following the onscreen instructions. Your computer may restart and ask you to insert the next Mac OS X Install Disc 2.
 - or
 - Leave the Disk Utility application open, and restore the backed up files from the image you created before removing the hard drive.

Installing Applications

To install just the applications that came with your computer, follow the steps below. Your computer must have Mac OS X already installed.

1. Back up your essential files, if possible.
2. Insert the Mac OS X Install Disc 1 that came with your computer.
3. Double-click "Install Bundled Software Only."
4. Follow the onscreen instructions.
5. After selecting the destination disk for installation, continue following the onscreen instructions. Your computer may restart and ask you to insert the next Mac OS X Install Disc 2.
6. Restore the data by reinstalling the backed up files from your backup to the new drive.

 Apple Inc.

© 2007 Apple Inc. All rights reserved.

Under the copyright laws, this document may not be copied, in whole or in part, without the written consent of Apple.

Every effort has been made to ensure that the information in this document is accurate. Apple is not responsible for printing or clerical errors.

Apple
1 Infinite Loop
Cupertino, CA 95014-2084
USA
+ 1 408 996 1010
<http://www.apple.com>

Apple, the Apple logo, Mac, Macintosh, and MacBook are trademarks of Apple Inc., registered in the U.S. and other countries.