

## The School

Hickman High School is the largest high school in the state of Missouri. It is a culturally diverse school that has won numerous recognitions for its strong academic and co-curricular programs.

The school offers traditional, honors, and advanced placement courses in the core academic subjects as well as a wide offering of other classes in 17 departmental areas.

Hickman High School operates on a 180-day academic year, two-semester calendar. The day is a traditional seven period day with each period 50 minutes in length.

## The Faculty

Hickman's faculty of 180 have earned the following degrees:

Bachelors .....	45
Masters .....	110
Specialist .....	6
Doctorate .....	4
Juris Doctorate .....	1
Nursing .....	2



## The Student Body

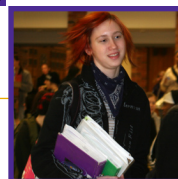
Hickman High School has an enrollment of over 2100 students in grades 10-12. The student body represents a broad range of ethnic, racial, religious and socioeconomic groups. The cultural/racial make-up of the school is:

African American .....	17%
Asian .....	4%
Caucasian .....	76%
Hispanic/Latino .....	2%
Native American .....	1%

In addition, we have students representing several countries.

## Distinctions

- United States Department of Education Excellence in Education Award 1984-85 & 1995-96
- Missouri Department of Elementary and Secondary Education Gold Star School Award
- Accredited by the North Central Association of Secondary Schools and Colleges and with Distinction by the Missouri Department of Elementary and Secondary Education 1999-2000



## Contact

David H. Hickman High School  
1104 N. Providence Road  
Columbia, MO 65203  
[www.columbia.k12.mo.us/hhs/hhs.htm](http://www.columbia.k12.mo.us/hhs/hhs.htm)

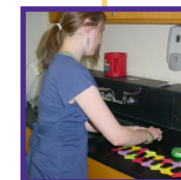
Mike Jeffers, Principal  
573-214-3000  
Fax: 214-3057  
email: [mjeffers@columbia.k12.mo.us](mailto:mjeffers@columbia.k12.mo.us)

Ann Landes, Guidance Director  
573-214-3008  
Fax: 573-214-3058  
e-mail: [alandes@columbia.k12.mo.us](mailto:alandes@columbia.k12.mo.us)

## David H. Hickman High School

## 2007-2008 School Profile

CEEB/ACT Code: 260720



Home of the Kewpies  
Established 1927



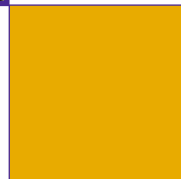
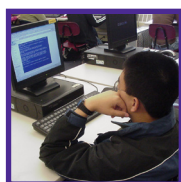
## The Community

The metropolitan area of Columbia has a population of approximately 126,000 people. The home campus of the University of Missouri is located in Columbia. The city is also home to two private colleges, Columbia College and Stephens College, and to a branch campus of Moberly Area Community College.

The University of Missouri is Columbia's largest employer. Other major employers include University Hospital, Boone Hospital, the Columbia Board of Education, Missouri Book Services, Shelter Insurance, State Farm Insurance, 3M and Quaker Oats. The current unemployment rate is less than 2%, one of the lowest in the nation.

Columbia strongly supports the arts and hosts a variety of cultural events every year ranging from Broadway productions to symphony orchestras, jazz festivals, folk festivals and art shows.

With the educational, cultural, and recreational opportunities available to Columbia residents, our city has consistently been named one of the best places to live by *Money Magazine*.



## Honors, Advanced, and Advanced Placement Courses

Honors and AP courses have open enrollment. Teacher recommendation is encouraged and previous achievement guidelines are provided.

<b>Art</b>	AP Art 1 and 2
<b>English</b>	English 10 Honors World Life and Literature Honors English 11 Honors AP English: Language and Composition AP English: Literature and Composition
<b>Foreign Language</b>	French 2 Advanced French 3 Advanced AP French AP German AP Latin Literature AP Latin Vergil (AP Latin courses offered alternate years) Spanish 2 Advanced AP Spanish
<b>Math</b>	Algebra 2 Honors Pre-Calculus Honors AP Calculus AB AP Calculus BC AP Statistics AP Computer Science
<b>Music</b>	AP Music Theory
<b>Science</b>	Biology Honors Chemistry Honors Physics Honors Human Anatomy and Physiology Honors AP Chemistry AP Biology AP Physics
<b>Social Studies</b>	World History Honors World Life and Literature Honors U.S. History Honors AP Government AP European History AP Psychology AP U.S. History AP World History

## AP Score Summary

Year	# Candidates	Total grades	3 or higher
2005	316	692	82%
2006	298	569	83%
2007	322	566	83%

## Average ACT Composites

Year	Score	Frequency	Class Size
2004-05	23.5	435	625
2005-06	23.0	399	539
2006-07	23.6	382	563

## Average SAT I Scores

Year	Reading	Critical Math	Writing	Class Freq
2004-05	638	646		59
2005-06	611	616	603	59
2006-07	666	654	649	47

## % of Students Planning to Enter 4-Year Colleges

2001	70	2003	72	2005	72
2002	70	2004	73	2006	74

## National Merit/Achievement Scholarship Semi-Finalists

2002-03	17	2005-06	2
2003-04	8	2006-07	13
2004-05	8	2007-08	8

## U.S. Presidential Scholars

Overall	16
---------	----

## AP Scholar Recognition 2007

Scholars	24
Scholars with Honor	20
Scholars with Distinction	37
National Scholars	6
State Scholars	1