

PLATE NO. 1



#13

WILEY

RESTRICTED

BB 63
FINISHED PLAN
TAKEN FROM WORK EXAMINED
AND FOUND CORRECT

U. S. S. MISSOURI BATTLESHIP - NO. 63

APPROVED
DATE: 19 April '48

J. H. ...
DESIGN SUPERINTENDENT

CORRECTED TO SUIT SHIP		
PLACE	DATE	OFFICER IN CHARGE
NORFOLK NAVAL SHIPYARD, PORTSMOUTH, VA.	20 Jan 50	<i>Keegan</i>

ORDER OF PLANS		
TITLE	SHEET NO	PLATE NO.
COVER SHEET		1
GENERAL DIMENSIONS & DATA	1	2
OUTBOARD PROFILE		3
INBOARD PROFILE	2	4
BRIDGES		5
FIRST & SECOND SUPERSTRUCTURE DECKS	3	6
MAIN DECK		7
SECOND DECK		8
SPLINTER DECK	4	9
THIRD DECK		10
FIRST PLATFORM		11
SECOND & THIRD PLATFORMS	5	12
HOLD		13
THIRD BOTTOM	6	14
INNER BOTTOM		15
SECTIONS FORWARD		16
SECTIONS AFT	7	17

BOOKLET
OF
GENERAL PLANS

PREPARED AT THE
NEW YORK NAVAL SHIPYARD

GENERAL DIMENSIONS HULL

LENGTH OVER ALL (MOLDED)..... 887'-3"
 LENGTH BETWEEN PERPENDICULARS..... 860'-0"
 BREADTH, EXTREME, TO OUTSIDE OF PLATING..... 108'-5"
 DRAFT, CORRESPONDING TO TRIAL DISPLACEMENT.....

MOLDED HEIGHTS OF BRIDGES & ELEVATED PLATFORMS AT Φ OF SHIP

HEIGHT OF MAIN DECK AT STERN..... 69'-8"
 HEIGHT OF MAIN DECK AT STERN..... 56'-3"
 HEIGHT OF 1ST SUPERSTRUCTURE..... 60'-11"
 HEIGHT OF 2ND SUPERSTRUCTURE..... 66'-5"
 HEIGHT OF FLAG AND SIGNAL BRIDGE..... 75'-11"
 HEIGHT OF NAVIGATING BRIDGE..... 83'-5"
 HEIGHT OF PILOT HOUSE TOP..... 90'-11"
 HEIGHT OF 1ST LEVEL - FORWARD..... 98'-5"
 HEIGHT OF 2ND LEVEL - FORWARD..... 105'-11"
 HEIGHT OF 3RD LEVEL - FORWARD..... 113'-5"
 HEIGHT OF 4TH LEVEL - FORWARD..... 121'-7"
 HEIGHT OF 5TH LEVEL - FORWARD..... 129'-9"
 HEIGHT OF 6TH LEVEL - FORWARD..... 136'-"
 HEIGHT OF 36" SEARCHLIGHT PLATFORM..... 96'-7"
 HEIGHT OF AFTER MAIN BATTERY DIRECTOR FLAT..... 83'-10"

MOLDED BASE LINE OF SHIP IS 2" ABOVE BOTTOM OF KEEL

Φ HEIGHTS OF LIGHTS ABOVE D.W.L. (34'-7 1/4" ABV. MOLDED BASE LINE)

SPEED LIGHTS P/S (ON "56-G" RADAR ANT. MOUNTING BASE)..... 137'-11 5/8"
 MANOVERBOARD & BREAKDOWN LIGHT (UPPER)..... 124'-6 1/2"
 MANOVERBOARD & BREAKDOWN LIGHT (LOWER)..... 118'-6 1/2"
 RANGE LIGHT..... 126'-6"
 BLINKER LIGHTS P/S (ON FORD. SIGNAL & ANTENNA YARD)..... 106'-10 1/4"
 MASTHEAD LIGHT..... 103'-6"
 SIDE LIGHTS P/S..... 49'-8"
 STEERING LIGHT (FORD)..... 38'-11"
 ANCHOR LIGHT (FORD)..... 51'-0"
 SPEED LIGHTS P/S (ON AFT. SIGNAL & ANTENNA YARD)..... 115'-11 1/4"
 ANCHOR LIGHT (AFT.)..... 26'-3"
 WAKE LIGHT..... 25'-6"
 STERN LIGHT (WHITE)..... 24'-0"
 STERN LIGHT (BLUE)..... 22'-10"

GENERAL DATA ACCOMMODATIONS

OFFICERS:
 SHIPS:
 ADMIRAL..... 0
 CAPTAIN..... 1
 MARINES..... 3
 AVIATORS..... 3
 OTHER COMMISSIONED OFFICERS..... 59
 WARRANT..... 16
 TOTAL..... 82

ENLISTED PERSONNEL:
 SHIP:
 CHIEF PETTY OFFICERS..... 53
 OTHERS..... 1345

FLAG:
 CHIEF PETTY OFFICERS..... 0
 OTHERS..... 0

AVIATION:
 CHIEF PETTY OFFICERS..... 0
 OTHERS..... 2
 TOTAL..... 1479

TOTAL (OFFICERS AND ENLISTED PERSONNEL) ~ 1561

ACCOMMODATIONS

PERSONNEL	BEDS	STATE ROOM BERTHS	C. RO. BERTHS	CREWS BERTHS	LOCKERS		
					B-1	B-2	A
ADMIRAL	1						
CAPTAIN	1						
CHIEF OF STAFF	1						
SEA CABINS	3						
WARDROOM OFFICERS	2	76	19				
WARRANT OFFICERS		16	9				
CHIEF PETTY OFFICERS			175		27	14	65
CHIEF BOSN MATE							
MARINES		3		91	18	72	
CREW				1957	742	1446	60
TOTAL	8	95	203	2048	787	1552	125

TOTAL BERTHS & BEDS = 2354
 CREWS HAMMOCKS = 133

HOSPITAL SPACES

LOCATION	SURGICAL BEDS	C. RO. BERTHS	CREWS BERTHS	LOCKERS	
				B-1	A
FIRST AID STA			3	3	
SICK BAY	2		48		32
ISOLATION WARD		8			4
BACT. LOG. DISPENSARY		1			
DOCTOR'S OFFICE		1			
TOTALS	2	10	51	3	36

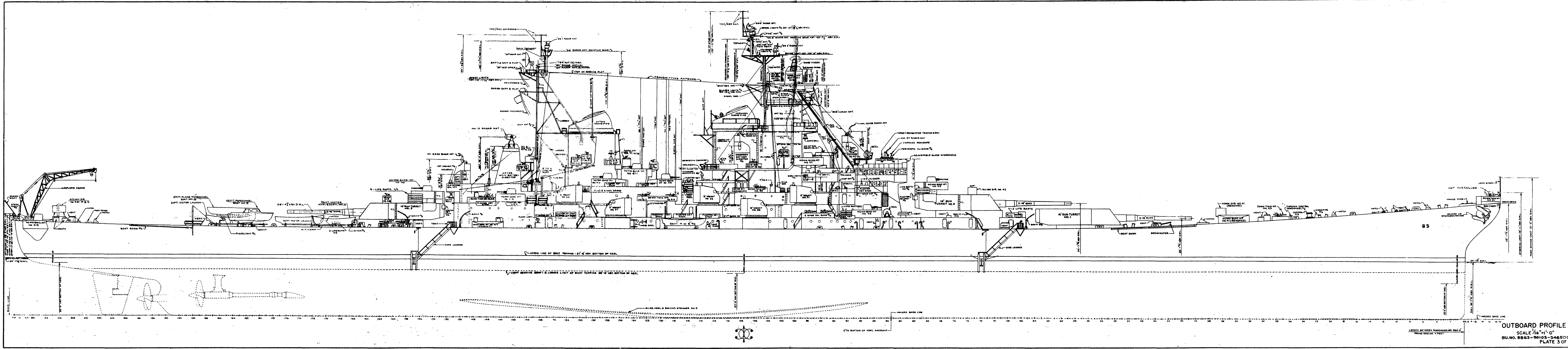
BOATS

NO. OF BOATS	TYPE OF BOAT	NO. MEN EACH BOAT	TOTAL MEN
2	28 FT. PERSONNEL BOAT, MK. II	22	44
1	24 FT PLANE PERSONNEL BOAT MK II	20	20
3	26 FT MOTOR WHALE BOAT	22	66
6	30 FT MOTOR WHALE BOAT	40	240
TOTAL ACCOMMODATIONS		370	370

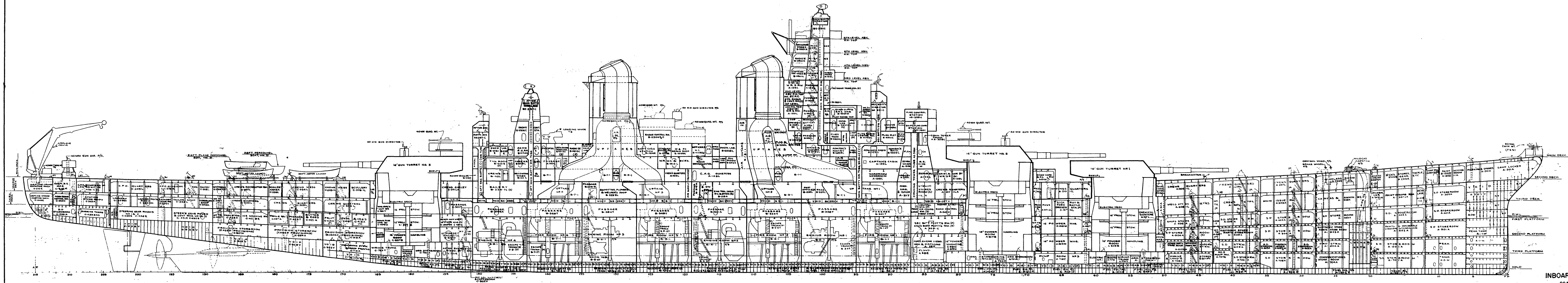
NO.	CAPACITY	TOTAL
60	25 MEN EACH	1500
52	25 MEN EACH	1300
12	VARIOUS	370
TOTAL ACCOMMODATIONS		3170

FIRE PLUGS

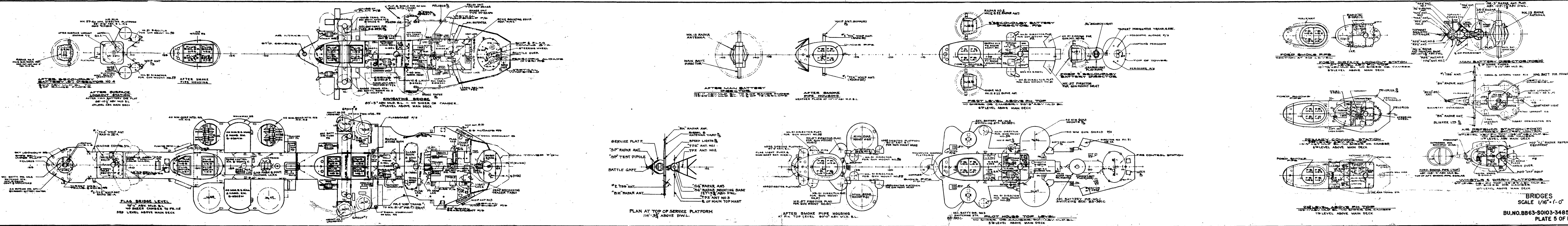
LOCATION	NO.
2ND PLATF.....	3
3RD DK.....	7
2ND DK.....	1
MAIN DK.....	15
1ST SUPST.....	5
2ND SUPST.....	4
03 LEVEL.....	2
04 LEVEL.....	1
05 LEVEL.....	2
06 LEVEL.....	1
07 LEVEL.....	1
08 LEVEL.....	1
09 LEVEL.....	1
010 LEVEL.....	1
TOTAL	65

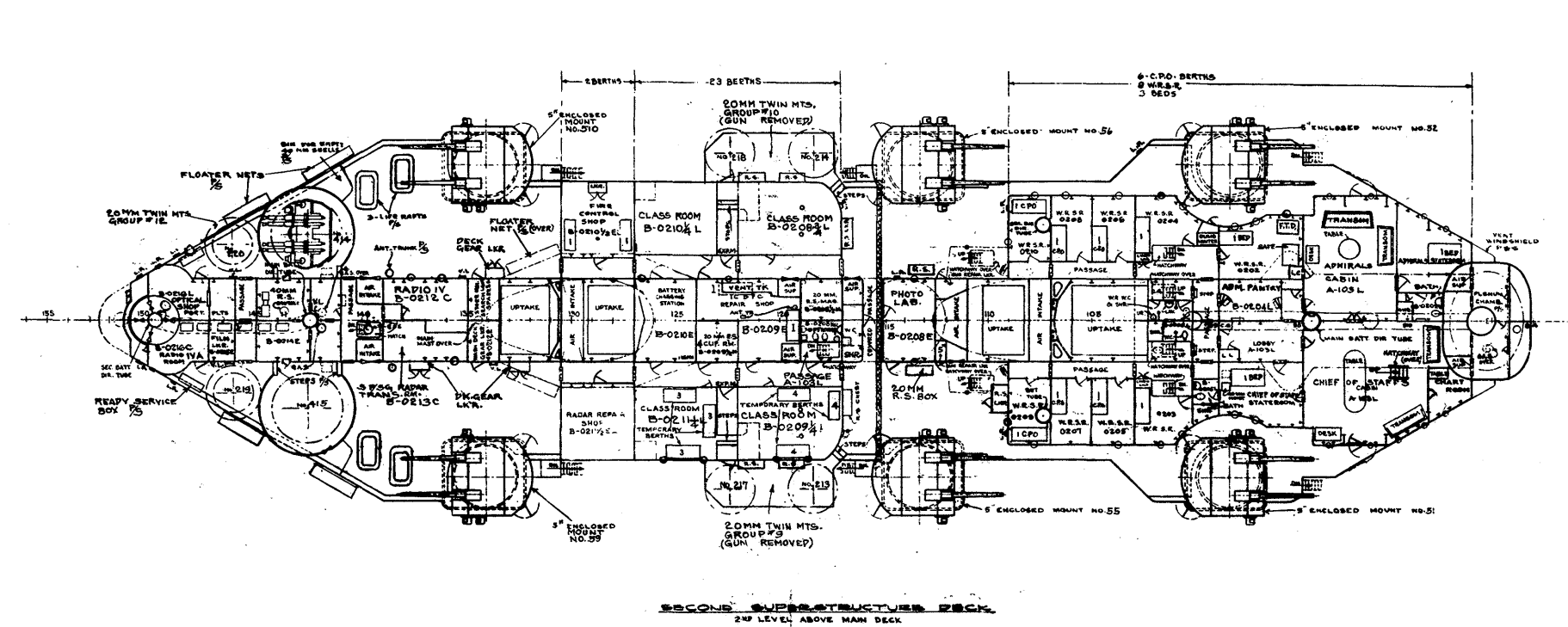


OUTBOARD PROFILE
 SCALE $\frac{1}{16}'' = 1'-0''$
 BU. NO. 8563-5013-34550C
 PLATE 3 OF 17

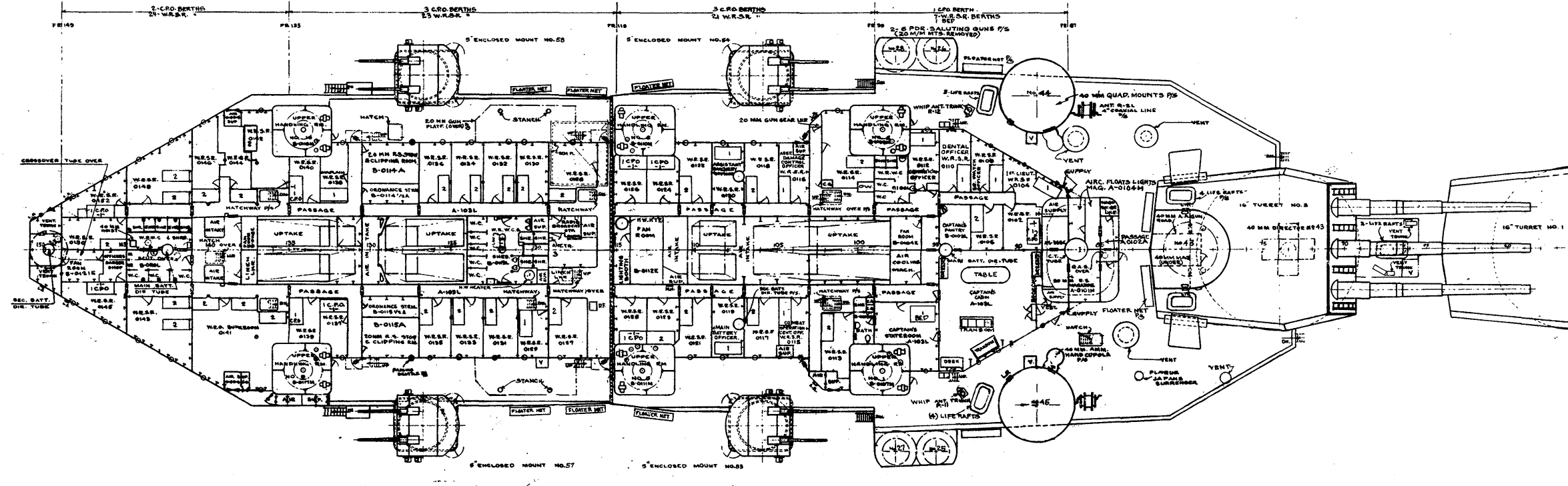


INBOARD PROFILE
 SCALE 1/16"=1'-0"
 BU. NO. 5563-50103-348500
 PLATE 4 OF 17

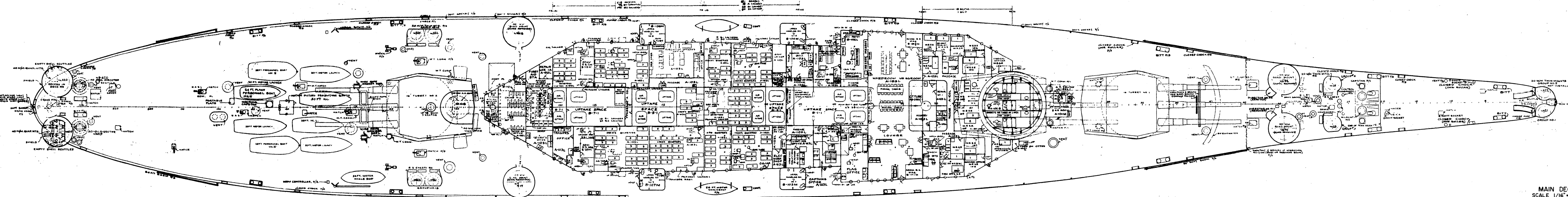




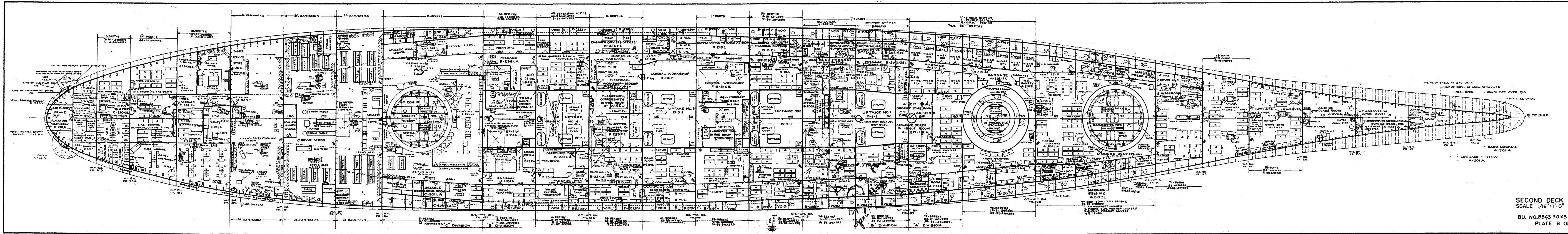
SECOND SUPERSTRUCTURE DECK
2ND LEVEL ABOVE MAIN DECK



FIRST SUPERSTRUCTURE DECK
1ST LEVEL ABOVE MAIN DECK

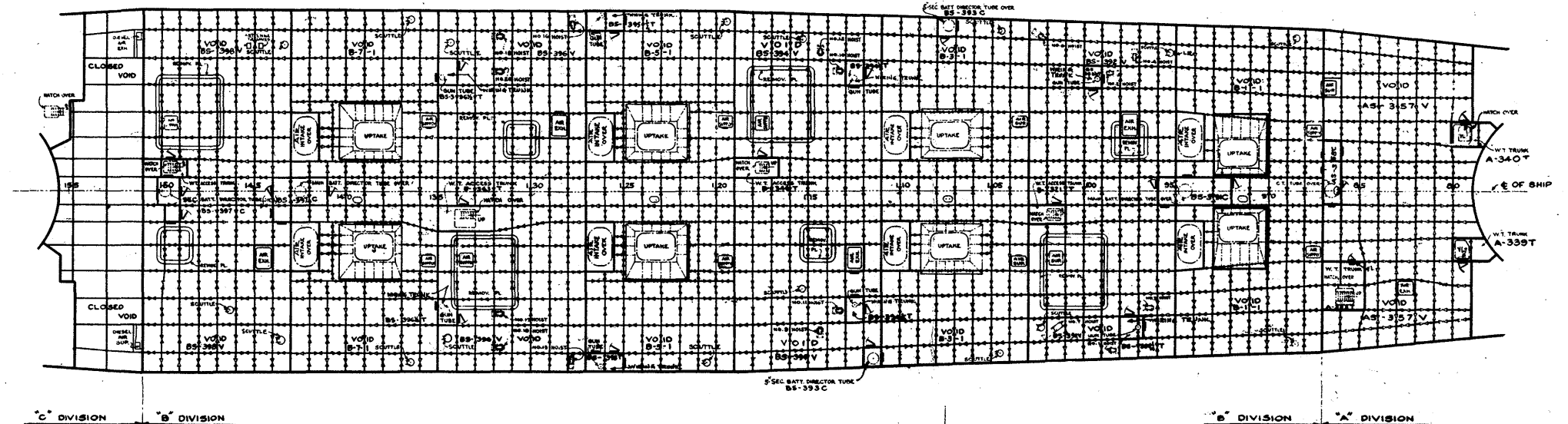


MAIN DECK
 SCALE 1/16" = 1'-0"
 BU.NO.BB63 50103 348500
 - PLATE 7 OF 17

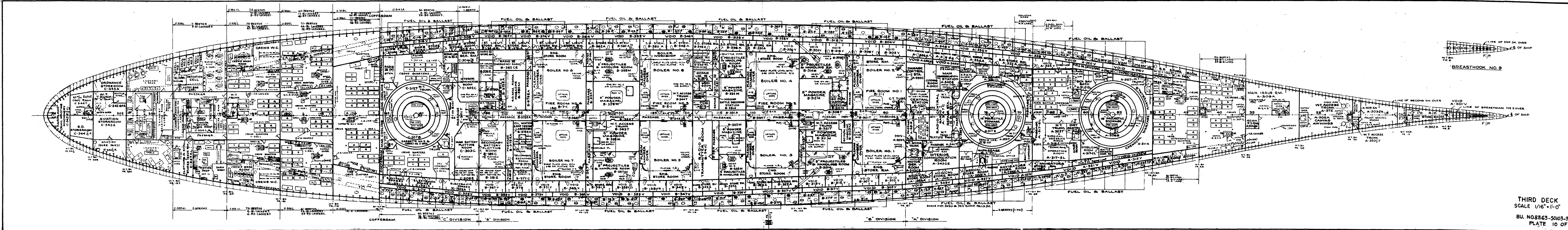


SECOND DECK
SCALE 1/16" = 1'-0"

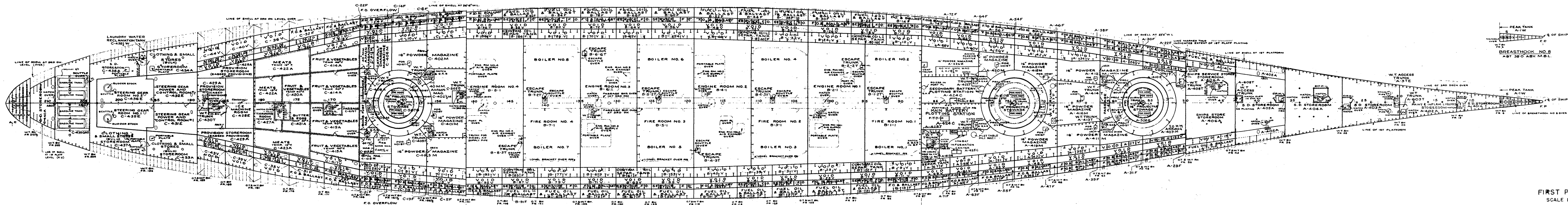
BU. NO. 5863-50103-348500
PLATE 8 OF 17



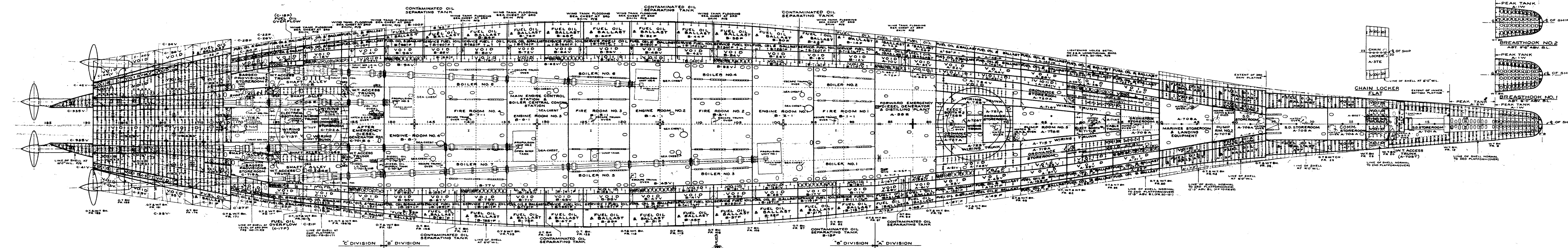
SPLINTER DECK
SCALE 1/16" = 1'-0"
BU. NO. BB63-50103-348500
PLATE 9 OF 17



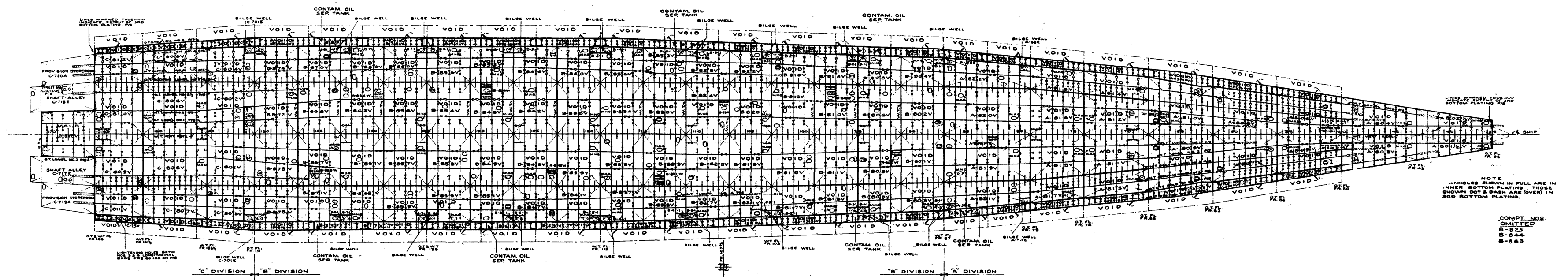
THIRD DECK
 SCALE 1/16" = 1'-0"
 BU. NO. 8863-50103-348500
 PLATE 10 OF 17



FIRST PLATFORM
 SCALE 1/16" = 1'-0"
 BU. NO. BB63-50103-348500
 PLATE II OF 17

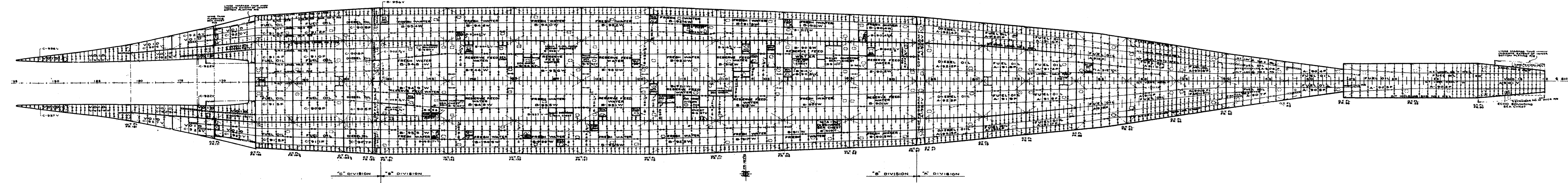


HOLD
SCALE 1/16" = 1'-0"
BU. NO. BB63-SO103-348500
PLATE 13 OF 17



NOTE
 ANHOLES SHOWN IN FULL ARE IN
 INNER BOTTOM PLATING. THOSE
 SHOWN DOT & DASH ARE (OVER) IN
 3RD BOTTOM PLATING.

COMPT. NOS.
 OMITTED
 B-825
 B-844
 B-863

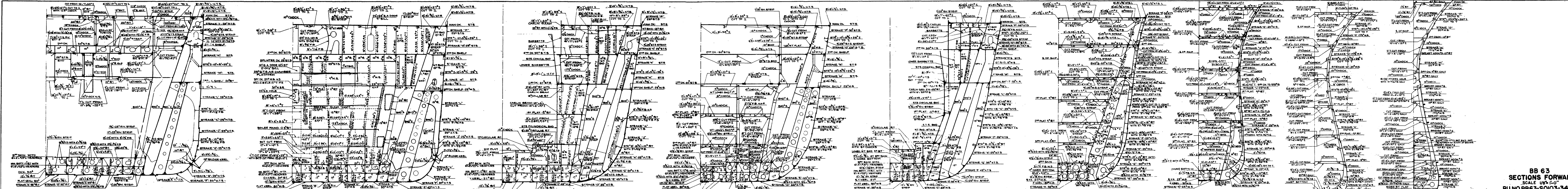


INNER BOTTOM

SCALE 1/16" = 1'-0"

BU. NO. 8863 SO103 348500

PLATE 15 OF 17



MIDSHIP SECTION
FRAME 101- LOOKING FORD

FRAME 95
LOOKING FORD

FRAME 74 & TURRET N^o 2
LOOKING FORD

FRAME 67
LOOKING FORD

FRAME 56 & TURRET N^o 1
LOOKING FORD

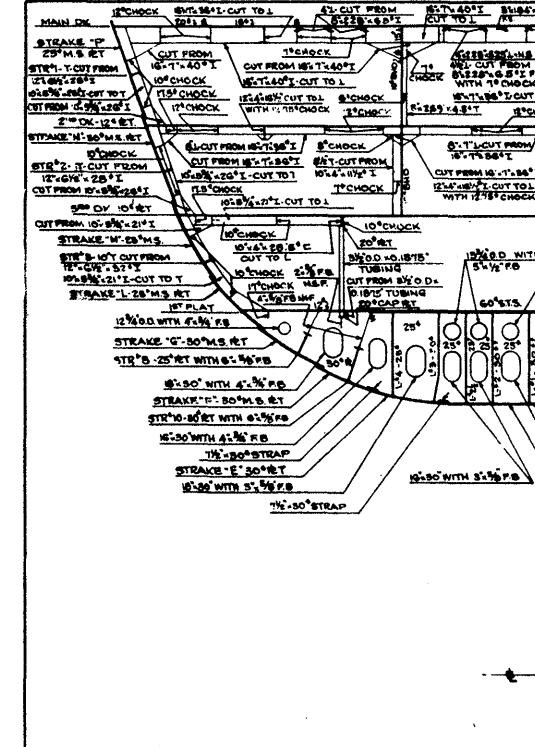
FRAME 44
LOOKING FORD

FRAME 29
LOOKING FORD

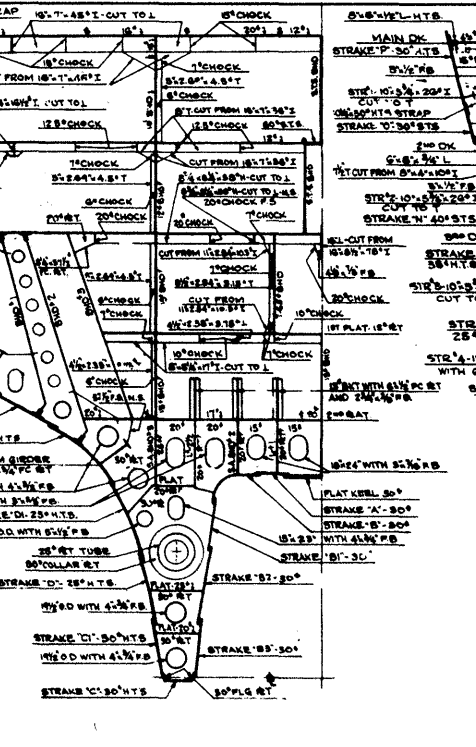
FRAME 13
LOOKING FORD

FRAME 5 1/2
LOOKING FORD

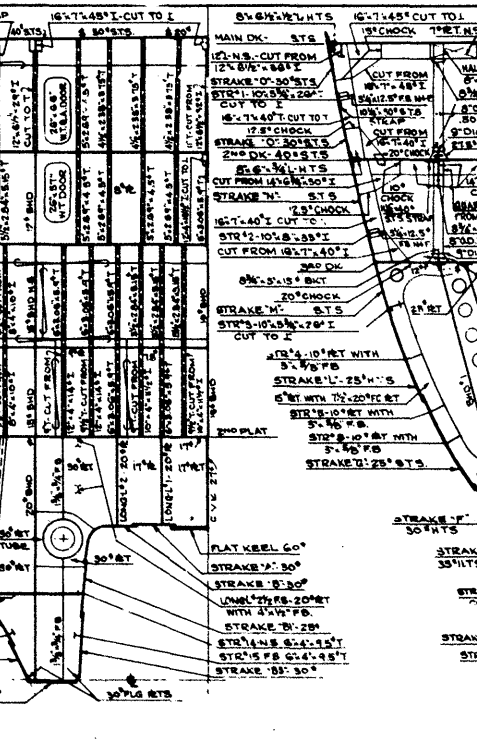
BB 63
SECTIONS FORWARD
SCALE 1/8"=1'-0"
BU.NO.BB63-SOI03-348500
PLATE 16



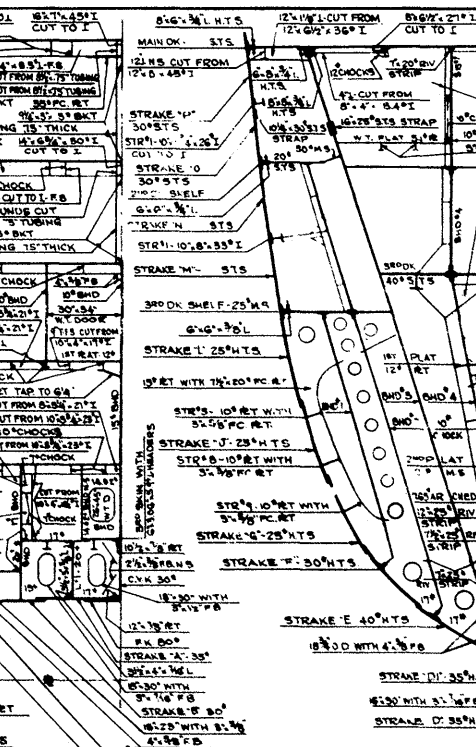
FRAME 198
LOOKING AFT



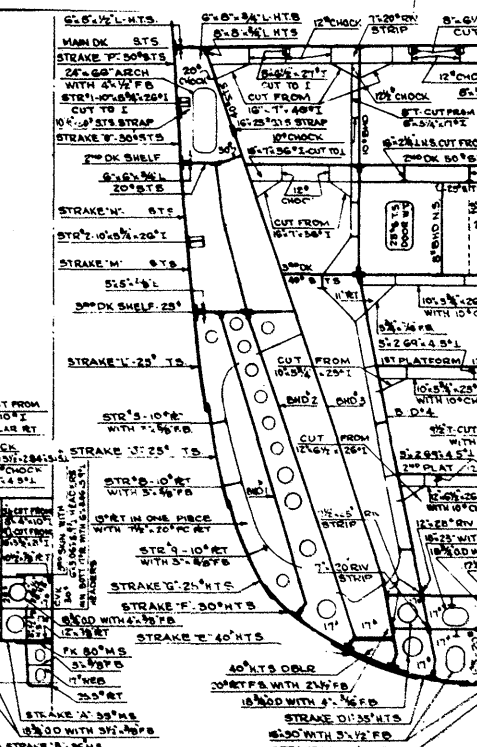
FRAME 188
LOOKING AFT



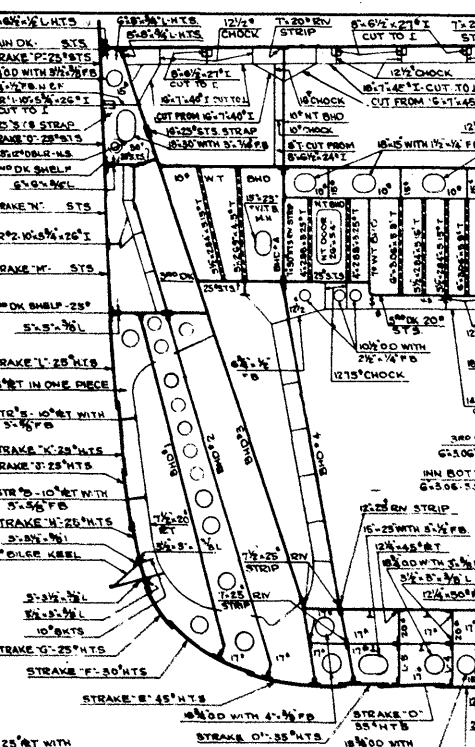
FRAME 181 W.T. BULKHEAD
LOOKING AFT



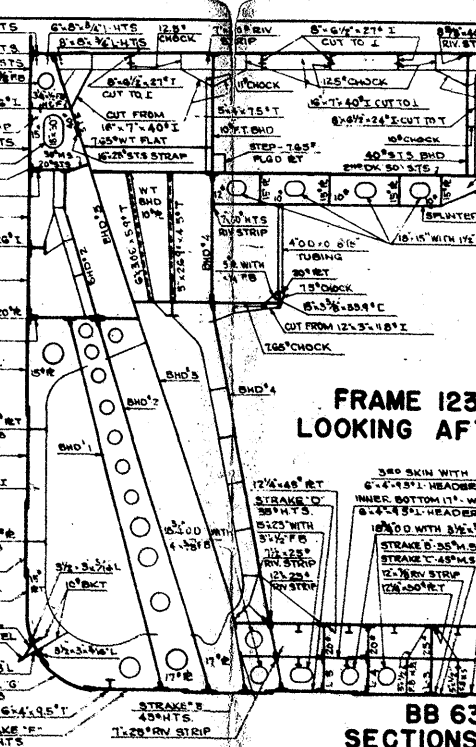
FRAME 169
LOOKING AFT



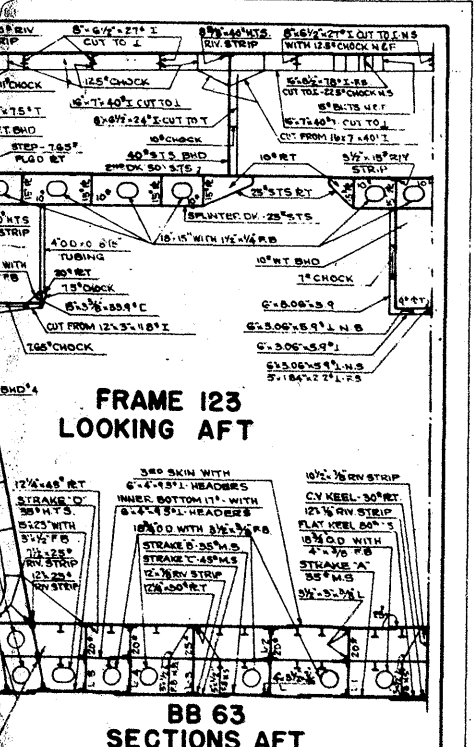
FRAME 160 1/2 & TURRET NO 3
LOOKING AFT



FRAME 154
LOOKING AFT



FRAME 147
LOOKING AFT



FRAME 123
LOOKING AFT

BB 63
SECTIONS AFT
SCALE 1/8"=1'-0"
BU. NO. BB63-S0103-34850
PLATE 17