



Crown Court

Annual Report 2006 - 2007

Kingston Upon Thames Crown Court

Kingston Upon Thames Crown Court

Annual Report by the Resident Judge and Court Manager

RESIDENT JUDGE & COURT MANAGER COMMENTS:

Capacity and Performance – Trial receipts are slightly down due to the loss of the Sutton Magistrates Courts work to Croydon Crown Court under the committal paths review. Operationally this has made no difference because of the fact that we import work from other Courts to fill our very large courtrooms with Multi-handed trials. Our outstanding case load is now historically at a high of 667. This together with an increased average length of trial now at 14.6 hours means that we are at or near our capacity.

Ineffective Trials and other performance indicator. I am pleased to say that my List Officer and Case progression team seem to have this problem in control with good case progression working closely with the Judiciary and Agency partners. Last year we achieved 11% Ineffective trial rate which was the second best in London. We anticipate being able to better this years improved target of 14%. Timeliness is still a concern with an end of year out turn at 64.1% which is down from last year's figure of 66.5%. The figure is adversely affected by the long multi handed cases the court deals with from our committing courts and other Crown Courts. Because of the complexity and length of these they are rarely ready within the 16 week target. During the last year one of our trials lasted over nine months. We are still looking at the reasons for Cracked and Ineffective trials with the CPS through JPM meetings and this year we will be looked further to see if we can reduce the number of cracked trials. The Jury figure requires special mention with the utilisation figure the joint highest in London.

Staffing and Judicial strength, In June my experienced Court Manager was suddenly called away to the Regional Office to work on the planning appeal for new Courtrooms at Isleworth Crown Court and the closure of Middlesex Guildhall Crown Court. The Deputy Court Manager did an excellent job covering for him as did the Office manager covering for her position. The Court Manager returned to the Court in January 2007 having been away some six months. We are short of Ushers at the present time and I am told that these vacancies will be filled but there have been operational difficulties with the HR recruitment process. Judicial strength is finally adequate with a transfer of a Judge from the closure of Middlesex Guildhall Crown Court. However he leaves next year and I will be seeking a full time replacement.

Prison Escort Contract and Prison Video Link. Despite the Prison overcrowding situation the contractor has in the main continued to deliver Prisoners in time for Court hearings. There have been some instances however of worryingly late pick ups of Prisoners which has meant long days for Custody defendants. My fellow Judges and I do like the PVL system, but only having two courtrooms hooked up can lead to limitations in usage.

School Visits and Community work. The Court held its planned Open day last September with some 1500 people passing through our doors. It was a great success and we plan to hold Open days every two years. The Community liaison Judge visited a Korean festival and has recently been to the local Mosque. The Court hosts large numbers of work experience students and last year approximately 25 visited the Court staying anything from two days to two weeks. Being such a new Court with our superior accommodation means we are frequently asked to host visits from Judges and Officials from other countries. In the last year we welcomed visitors from Georgia, France, Sudan, and China to name a few. As I mentioned in the last report the Court was awarded a new Charter Mark last May. There will be the annual surveillance visit in June of this year where we are expecting positive feedback from the assessor. The expertise the Court Manager and the Court staff have on the Charter mark process is being put to good use across the Region with advice and assistance being given to other Courts.

Future Prospects. We are now a designated Terrorism Court behind Woolwich Crown Court on the basis that if Woolwich cannot deal with a particular trial than we will be the fallback venue. We are in the process of having major security works carried out at the Court such as improved CCTV and XRAY search equipment which should be completed in August. The Court still continues to deal with cases where the Police deploy firearms and during the year dealt with a series of trials where the Police were protecting the witness.

I have concerns over the maintenance of the building having suffered nearly a month without functioning Air Conditioning within the building with parts having to be ordered from Switzerland. In addition some of the Video playback \ TV Link equipment has been unreliable. The Court Manager tells me that any faulty equipment is going to be serviced very soon.

We are also looking to convert two nearby Magistrates Courtrooms for Crown Court use. This is at the early planning stage with a final decision to be made soon. We will then consult with our agency partners when a final decision is made. This will be a temporary measure to try to alleviate the pressures across London. We will list from Kingston and staff them from Kingston. I will be asking for an additional full time Circuit Judge to cover this additional commitment. Assuming it gets the go ahead we plan to have these courtrooms up and running in the early part of 2008.

I again pay tribute to the Court Manager and his staff for their dedicated efforts and the excellent atmosphere that persist throughout the Court.

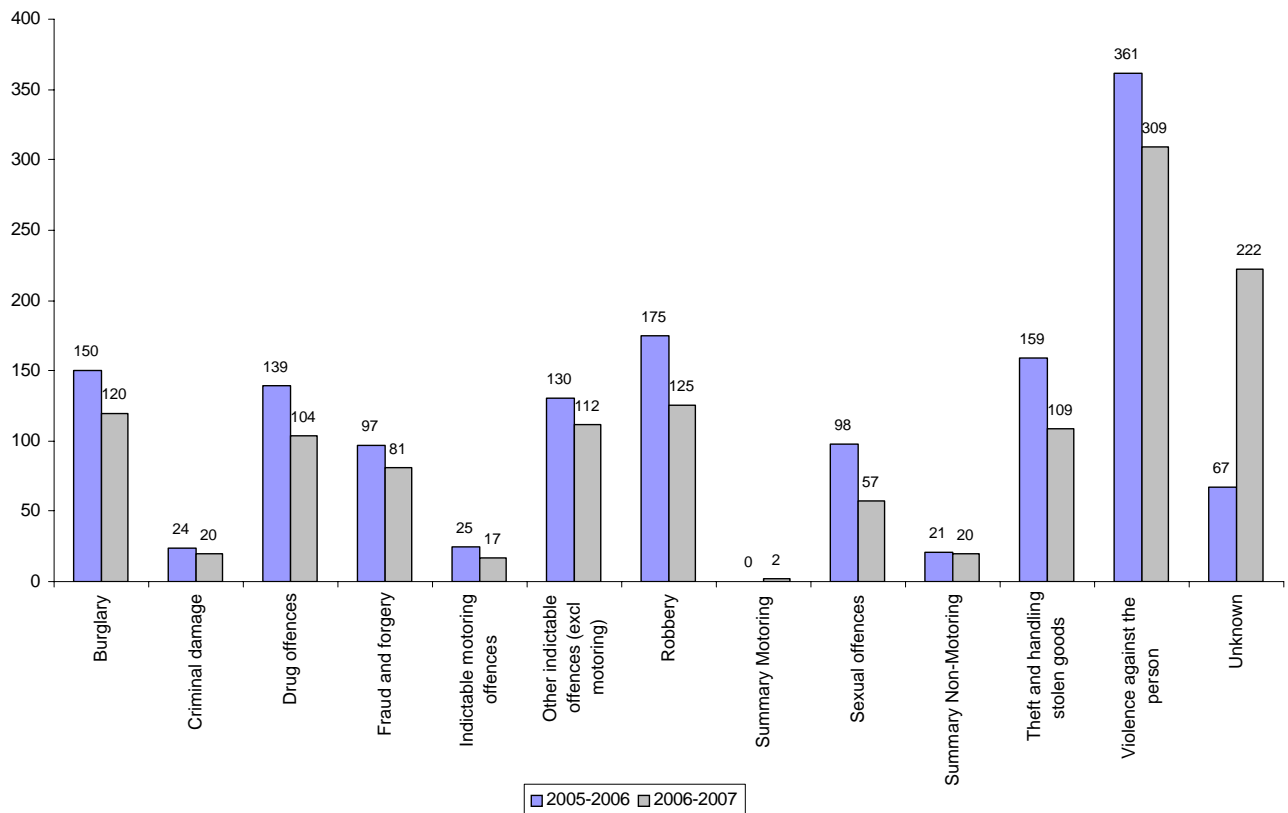
RESIDENT JUDGE:	His Honour Charles Tilling	DATE:	20 June 2006

COURT MANAGER:	Sean O'Brien	DATE:-	20 June 2006

Kingston Upon Thames Crown Court
Annual Report by the Resident Judge and Court Manager

Crown Court Receipts by Offence Group

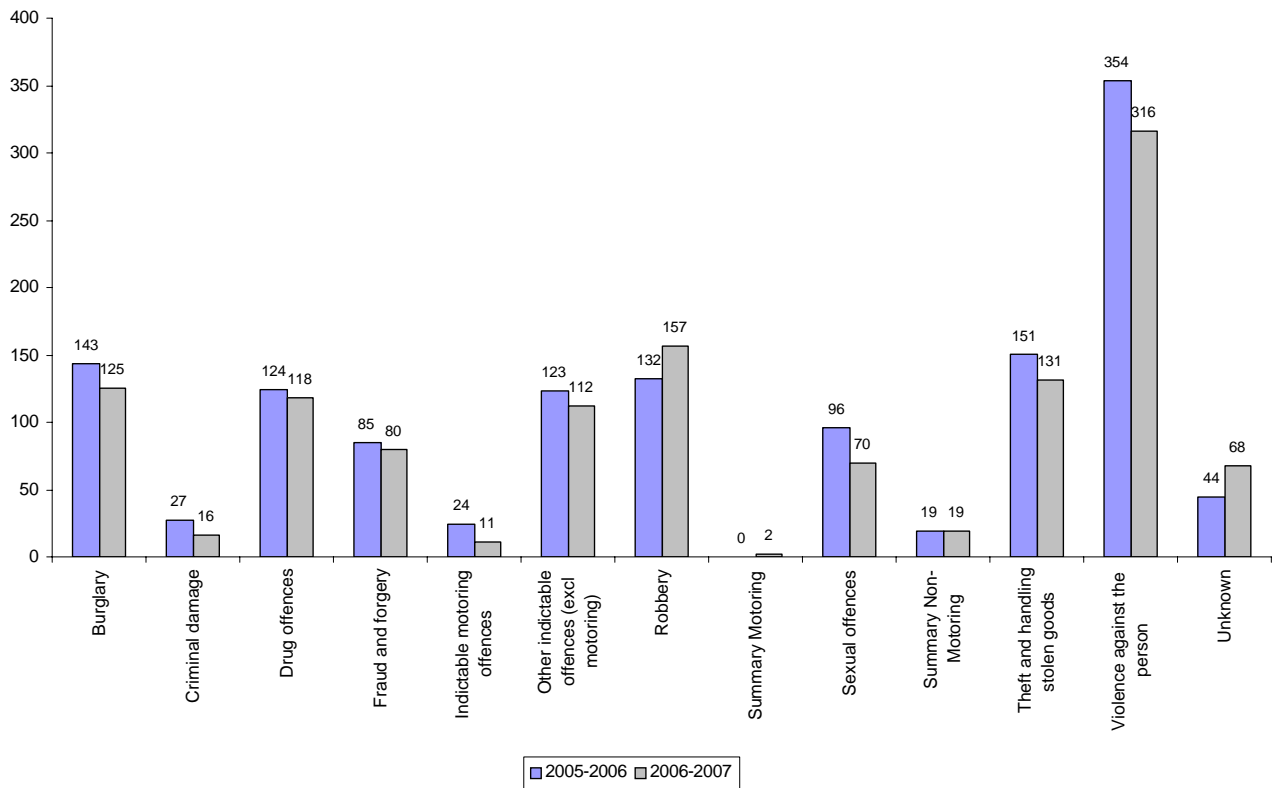
Group	2005-2006	% of Total	2006-2007	% of Total
Burglary	150	10%	120	9%
Criminal damage	24	2%	20	2%
Drug offences	139	10%	104	8%
Fraud and forgery	97	7%	81	6%
Indictable motoring offences	25	2%	17	1%
Other indictable offences (excl motoring)	130	9%	112	9%
Robbery	175	12%	125	10%
Summary Motoring	0	0%	2	0%
Sexual offences	98	7%	57	4%
Summary Non-Motoring	21	1%	20	2%
Theft and handling stolen goods	159	11%	109	8%
Violence against the person	361	25%	309	24%
Unknown	67	5%	222	17%
Total	1446	100%	1298	100%



Kingston Upon Thames Crown Court
Annual Report by the Resident Judge and Court Manager

Crown Court Disposals by Offence Group

Group	2005-2006	% of Total	2006-2007	% of Total
Burglary	143	11%	125	10%
Criminal damage	27	2%	16	1%
Drug offences	124	9%	118	10%
Fraud and forgery	85	6%	80	7%
Indictable motoring offences	24	2%	11	1%
Other indictable offences (excl motoring)	123	9%	112	9%
Robbery	132	10%	157	13%
Summary Motoring	0	0%	2	0%
Sexual offences	96	7%	70	6%
Summary Non-Motoring	19	1%	19	2%
Theft and handling stolen goods	151	11%	131	11%
Violence against the person	354	27%	316	26%
Unknown	44	3%	68	6%
Total	1322	100%	1225	100%



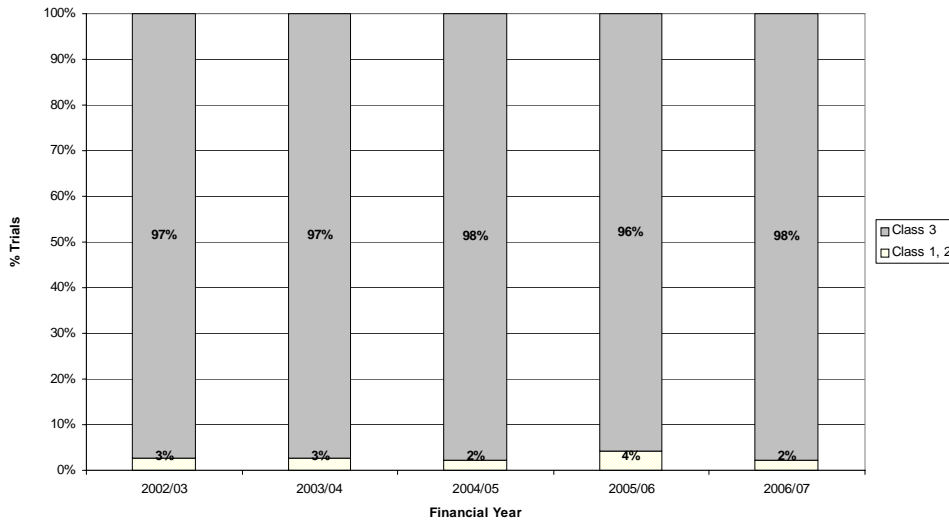
Kingston Upon Thames Crown Court

Annual Report by the Resident Judge and Court Manager

Workload

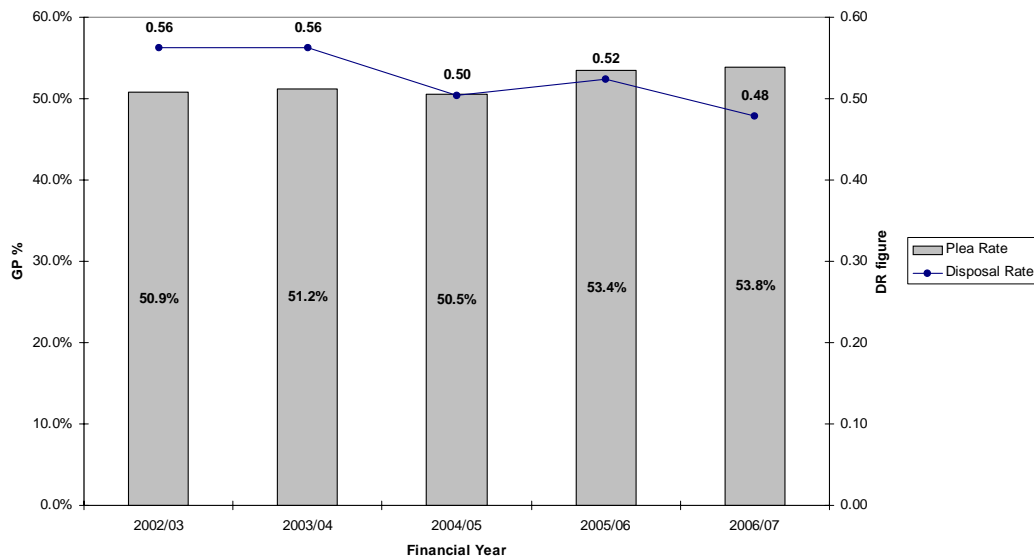
	EW 06/07	2002/03	2003/04	2004/05	2005/06	2006/07	% Diff
Trial Receipts	77,765	1,488	1,420	1,286	1,449	1,301	-10.2%
Class 1, 2	6%	3%	3%	2%	4%	2%	-47.9%
Class 3	94%	97%	97%	98%	96%	98%	2.1%

Trial Receipts by Class



	EW 06/07	2002/03	2003/04	2004/05	2005/06	2006/07	% Diff
Sentence Receipts	35,959	402	471	460	515	417	-19.0%
Appeal Receipts	13,004	162	157	181	186	153	-17.7%
Disposals	79,045	1,447	1,401	1,281	1,398	1,291	-7.7%
Plea Rate	66%	50.9%	51.2%	50.5%	53.4%	53.8%	0.8%
Disposal Rate	0.75	0.56	0.56	0.50	0.52	0.48	-8.7%

Guilty Plea Rate and Disposal Rate



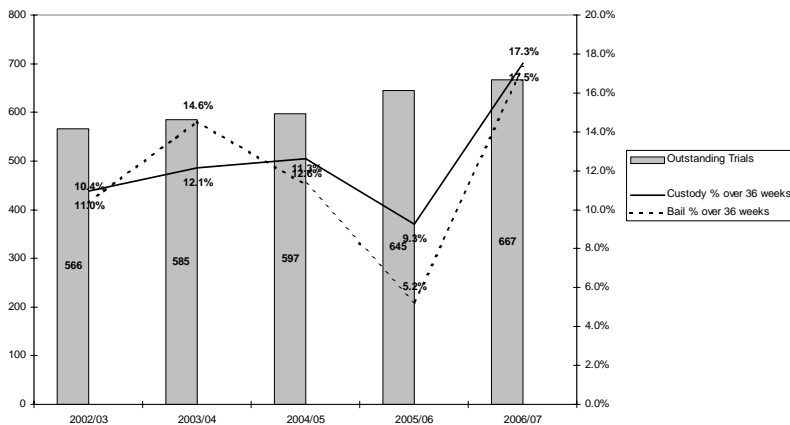
Kingston Upon Thames Crown Court

Annual Report by the Resident Judge and Court Manager

Outstanding Cases

	EW 06/07	2002/03	2003/04	2004/05	2005/06	2006/07	% Diff
Outstanding Trials	31,593	566	585	597	645	667	3.4%
Custody % over 16 weeks	27%	29.7%	22.4%	25.7%	32.1%	27.8%	-13.5%
Custody % over 36 weeks	10%	11.0%	12.1%	12.6%	9.3%	17.5%	89.0%
Bail % over 16 weeks	30%	29.7%	34.5%	35.1%	37.0%	34.6%	-6.4%
Bail % over 36 weeks	13%	10.4%	14.6%	11.3%	5.2%	17.3%	230.1%

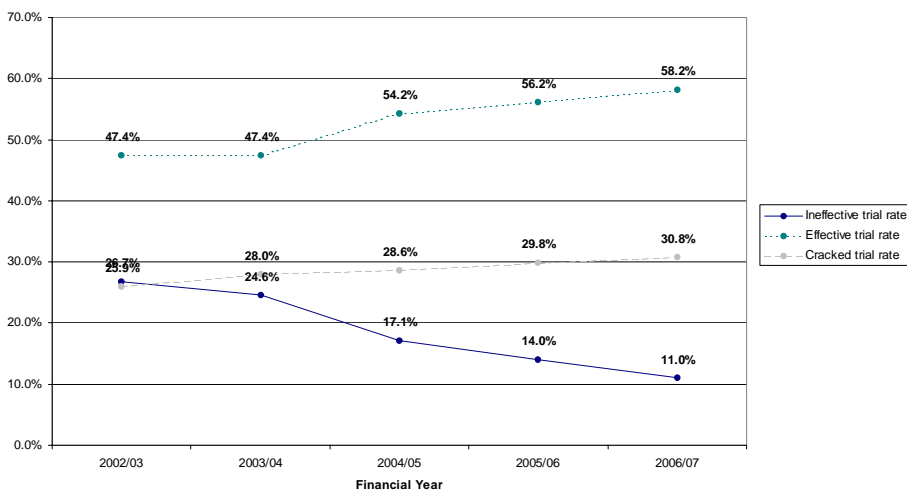
Outstanding Cases and the proportion over 36 weeks



Cracked and Ineffective

	EW 06/07	2002/03	2003/04	2004/05	2005/06	2006/07	% Diff
Trials listed (number)	37,149	1,188	1,073	887	858	775	-9.7%
Ineffective trial rate	12%	26.7%	24.6%	17.1%	14.0%	11.0%	-21.6%
Effective trial rate	48%	47.4%	47.4%	54.2%	56.2%	58.2%	3.6%
Cracked trial rate	39%	25.9%	28.0%	28.6%	29.8%	30.8%	3.4%

Ineffective, Effective and Cracked Trials



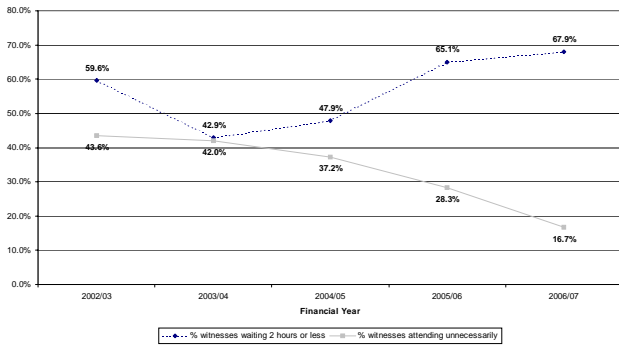
Kingston Upon Thames Crown Court

Annual Report by the Resident Judge and Court Manager

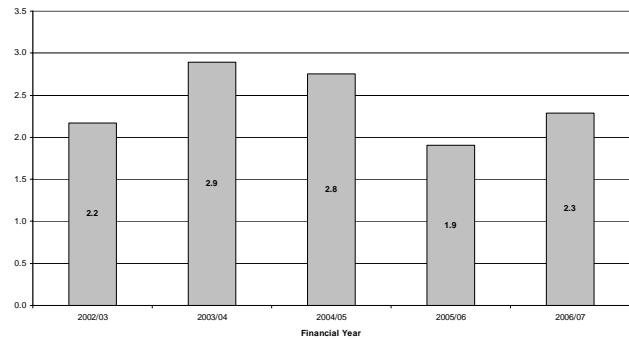
Witness and Juror service¹

	EW 06/07	2002/03	2003/04	2004/05	2005/06	2006/07	% Diff
Juror days as % of attendance	60%	73.7%	68.8%	75.9%	75.6%	79.2%	4.8%
% witnesses waiting 2 hours or less	48.0%	59.6%	42.9%	47.9%	65.1%	67.9%	4.4%
% witnesses attending unnecessarily	43.2%	43.6%	42.0%	37.2%	28.3%	16.7%	-41.1%
Hours waited (witnesses attending unnecessarily)	2.7	2.2	2.9	2.8	1.9	2.3	20.1%

Percentage of Witnesses Waiting Within Target and Proportion Waiting Unnecessarily



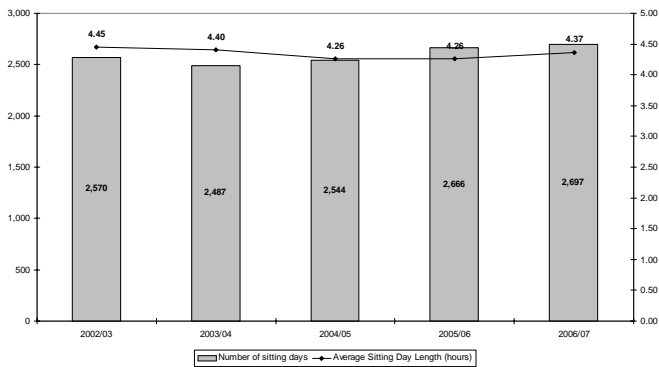
Average Waiting Time for Witnesses Attending Unnecessarily (hours)



Sitting Days

	EW 06/07	2002/03	2003/04	2004/05	2005/06	2006/07	% Diff
Average Trial Hearing Time (hours)	9.6	20.3	19.0	17.0	12.8	14.6	13.8%
Average Sitting Day Length (hours)	4.37	4.45	4.40	4.26	4.26	4.37	2.5%
Number of sitting days	105,629	2,570	2,487	2,544	2,666	2,697	1.2%

Number of Sitting Days & Average Length of Sitting Day



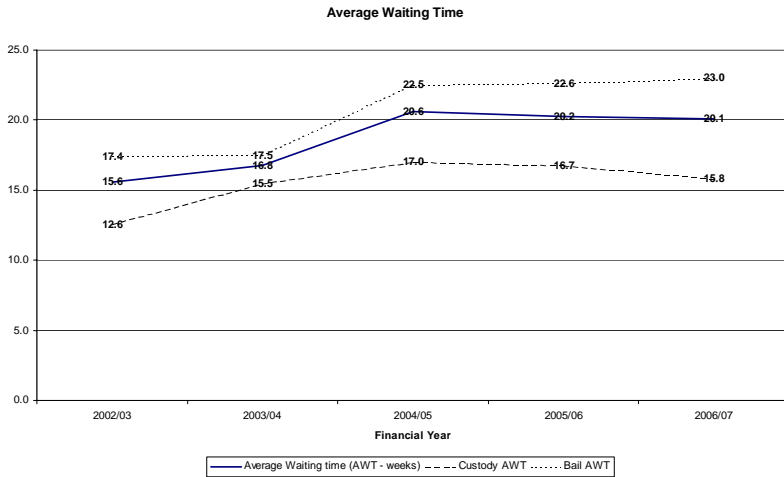
¹ Witness Survey data are from the combined June and November survey
Kingston Upon Thames Crown Court

Kingston Upon Thames Crown Court

Annual Report by the Resident Judge and Court Manager

Waiting Times

	EW 06/07	2002/03	2003/04	2004/05	2005/06	2006/07	% Diff
Average Waiting time (AWT - weeks)	17.0	15.6	16.8	20.6	20.2	20.1	-0.7%
Custody AWT	13.8	12.6	15.5	17.0	16.7	15.8	-5.6%
Bail AWT	18.7	17.4	17.5	22.5	22.6	23.0	1.7%



PSAs

	EW 06/07	2002/03	2003/04	2004/05	2005/06	2006/07	% Diff
% Defendants commencing in target	75.4%	75.7%	74.6%	64.4%	66.5%	64.1%	-3.6%
Committal for Trial	67.0%	67.9%	66.4%	54.0%	53.8%	46.3%	-13.9%
Sent for Trial	73.5%	78.4%	78.6%	61.8%	66.4%	70.3%	5.9%
Committal for Sentence	89.9%	91.2%	88.3%	92.9%	93.7%	90.9%	-3.0%
Appeal	86.2%	88.1%	87.8%	83.9%	90.8%	94.7%	4.2%

