

Let's Be Square Hat for Save the Children: Knit One Save One

by Cheryl Waters

Copyright © 2008

All rights reserved

info@bernardworks.com



The Knit One Save One campaign for 2008 sponsored by Save the Children, inspired me to create numerous hats for this worthy cause. These patterns may be downloaded for free for the purpose of creating charitable contributions to Save the Children. Please note these patterns are copyrighted and all rights are reserved.

Thank you, Lisa Edelstein. Your sweet pumpkin hat inspired me to make one. I made a simple striped hat before I succumbed to copying yours. But I just couldn't stop there!

Please see my other designs for Knit One Save One.

SIZES

Directions are for low birthweight infants. Circumference should be between 9" and 12".

MATERIALS USED:

- 1 Ball Lion Brand Vanna's Choice (100% acrylic);
Solids: 3.5 oz/100g; 170 yd/156m;
Prints: 3 oz/85g; 145 yd/133m
#143 Antique Rose
#147 Purple
#172 Dusty Green
- Double pointed needles, set of 4, sizes 9 (5.5mm) OR SIZE TO OBTAIN GAUGE
- Tapestry needle
- Pom-pom maker

GAUGE: 4" x 4" (10cm x 10cm) = 16 sts x 22 rows. TO SAVE TIME, TAKE TIME TO CHECK GAUGE.

FINISHED CIRCUMFERENCE: 12"

TECHNIQUES & NECESSARY SKILLS FOR THIS PROJECT

FAIR ISLE:Knitting method that works small repeated design with usually two colors on one row.

FLOATS:Loose strands on wrong side of garment created by stranding. See *STRANDING*.

**JOINING and TYING OFF
YARNS IN INTARSIA AREAS
OR IN FAIR ISLE:**

When joining and ending yarns in intarsia or fair isle, temporarily tie square knots to secure yarns. When finishing, untie knots and weave in ends.

KITCHENER STITCH:

This is method of grafting edges together. It weaves stockinette stitch between two edges.

KITCHENER STITCH:



PHOTO 1

Insert tapestry needle into first stitch on front needle as to purl.

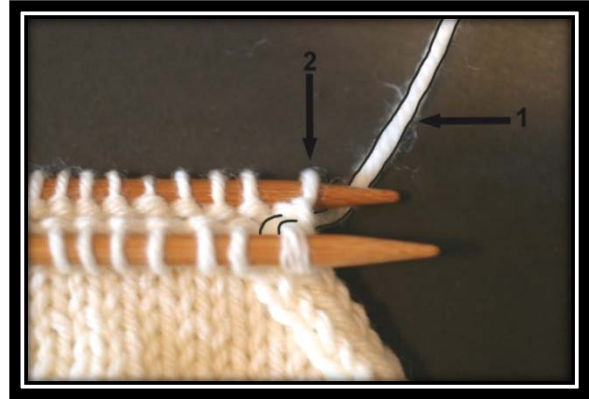


PHOTO 4

1. Pull through.
2. Do not drop stitch.

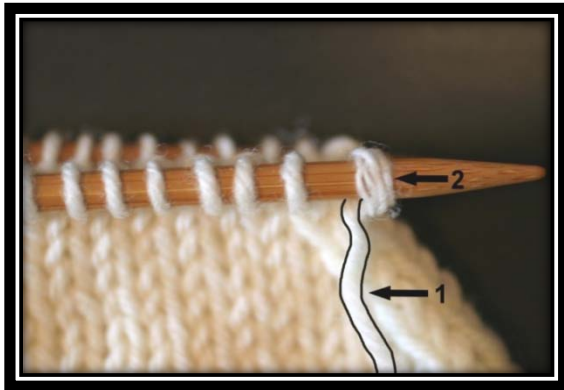


PHOTO 2

1. Pull through.
2. Do not drop stitch



PHOTO 5

Insert tapestry needle into first stitch on front needle as to knit.



PHOTO 3

Insert tapestry needle into first stitch on back needle as to knit.

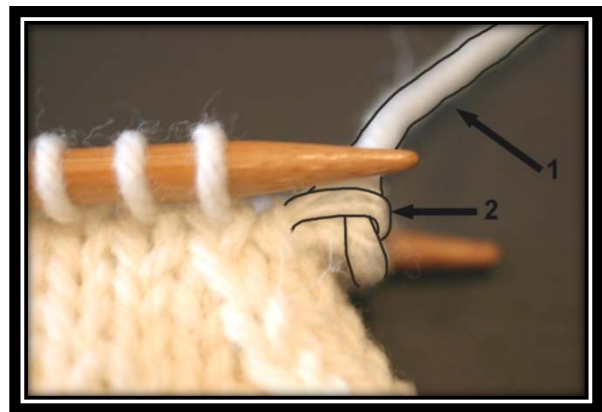


PHOTO 6

1. Pull through.
2. Drop stitch off needle.



PHOTO 7

Insert tapestry needle into next stitch on front needle as to purl. Pull through. Do not drop stitch.

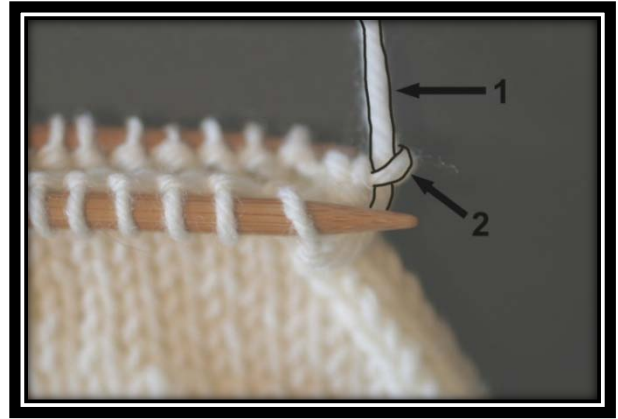


PHOTO 9

1. Pull through.
2. Drop stitch off needle.



PHOTO 8

Insert tapestry needle into first stitch on back needle as to purl.



PHOTO 10

Insert tapestry needle into next stitch on back needle as to knit. Pull through. Do not drop stitch.

Continue until all stitches have been bound off.

HINT: After first two steps, front needle will be "Knit, Drop, Purl"; back needle will be "Purl, Drop, Knit".

KNITTING IN THE ROUND:Method of knitting in a circle. Last stitch in round is knitted to beginning stitch of next round. Used in creating seamless socks and pullovers.

STOCKINETTE STITCH:Knit one row, purl one row; or if knitting in the round, knit every row.

STRANDING:Knitting method where color "A" loops behind color "B" when color "A" is being picked up again. Stranding usually does not occur over more than four stitches.

TWISTING YARNS: In order to keep holes from forming when switching colors, you **must twist** yarns when changing colors. Pull yarn you just finished working straight down (do not use tension in pulling it down). If "new" yarn is to right of starting point, pull it **over** "finished" yarn. If "new" yarn is to left of starting point, pull it **under** "finished" yarn and **then over**.

TWISTING YARNS

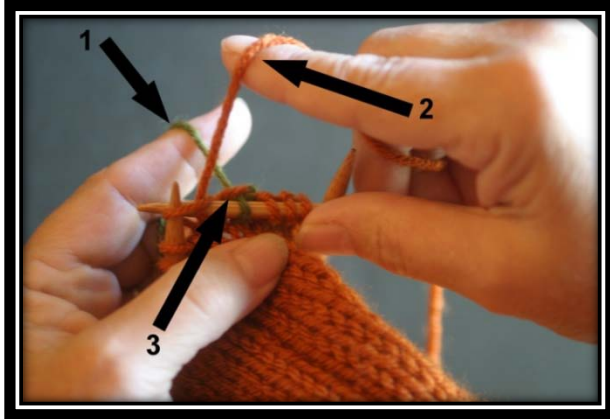


PHOTO 1

1. Pull yarn you just finished working straight down (do not use tension in pulling it down).
2. If "new" yarn is to right of starting point, pull it **over** "finished" yarn. If "new" yarn is to left of starting point, pull it **under** "finished" yarn and **then over**.
3. "New" yarn is over "finished" yarn. Then next stitch is knitted.

ABBREVIATIONS

[]	repeat all instructions between parentheses	mm	millimeter[s]
cm	centimeters	rnd[s].	round[s]
k	knit	st[s]...	stitch[es]
		yd[s]..	yard[s]

DIRECTIONS:

Cast on 48 sts in color A (#143 Antique Rose). Split sts evenly onto three needles. To begin knitting in the round, turn last cast-on st to first cast-on st. Use working yarn to knit into first cast-on st. Be careful to not twist sts.

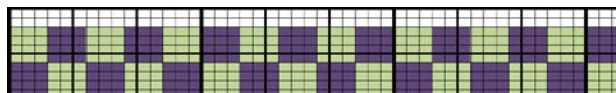
Rnds 1-8: Knit.

Rnd 9: Tie on color B (#172 Dusty Green), k3. Tie on color C (#147 Purple), k3. [In color B, k3. In color C, k3.] 7 times.

Rnds 10-12: [In color B, K3. In color C, k3] 8 times.

Rnds 13-16: [In color C, k3. In color B, k3.] 8 times.

Since hat is worked from brim to crown, chart is read from bottom to top. Since it is worked in the round, all rows are read right to left.



Rnds 17-26: In color A, knit.

Bind off using Kitchener stitch.

Make one pom-pom each in colors B and C. Sew one to each top corner of hat.