

City of Las Vegas

# GAMING ENTERPRISE DISTRICTS AND LOCATIONS APPROVED FOR NON-RESTRICTED GAMING

NO.	BUSINESS	ADDRESS	LICENSE
*1	Arizona Charlie's Hotel and Casino	740 S Decatur Blvd	G08-00001
2	Aztec Gold Inn and Casino (GED)	2200 S Las Vegas Blvd	G08-00002
3	California Hotel and Casino	12 E Ogden Ave	G08-00003
4	Castaways Hotel and Casino (NON)	2800 Fremont St	G08-00044
5	El Cortez Hotel and Casino	600 Fremont St	G08-00006
6	Fitzgerald's Casino and Hotel	301 Fremont St	G08-00051
7	Four Queens Hotel and Casino	202 Fremont St	G08-00009
8	Fremont Hotel and Casino	200 Fremont St	G08-00010
9	Gold Spike Hotel and Casino	400 E Ogden Ave	G08-00012
10	Golden Gate	1 Fremont St	G08-00013
11	Golden Nugget	129 Fremont St	G08-00014
12	Honest John's I'm Back Casino Bar (GED)	2430 S Las Vegas Blvd	G08-00049
13	Horseshoe Club	128 Fremont St	G08-00016
14	La Bayou	15 Fremont St	G08-00005
15	Lady Luck Casino	206 N Third St	G08-00056
16	Las Vegas Club	18 Fremont St	G08-00018
17	Main Street Station	200 N Main St	G08-00023
18	Mermaids	32 Fremont St	G08-00029
19	Las Vegas Gaming Company, dba Moulin Rouge (NON)	900 W Bonanza Rd	G08-00053
20	Capado Gaming Corp., dba Nevada Hotel and Casino	235 S Main St	G08-00050
21	Palace Station Hotel and Casino	2411 W Sahara Ave	G08-00025
22	Queen of Hearts Hotel and Casino	19 Lewis Ave	G08-00026
*23	Rampart Casino (GED)	221 N Rampart Blvd	G08-00052
*24	Santa Fe Station	4949 N Rancho Dr	G08-00048
25	Stratosphere Tower Casino and Hotel (GED)	2000 S Las Vegas Blvd	G08-00032
*26	Suncost Hotel and Casino (GED)	9090 Alta Dr	G08-00046
*27	Ultra New Town Tavern	600 Jackson St	G08-00038
28	Union Plaza Hotel and Casino	1 S Main St	G08-00033
29	Western Hotel and Casino	899 Fremont St	G08-00034
*30	Wildfire Casino	1901 N Rancho Dr	G08-00055

(GED) indicates that the property is located within a gaming enterprise district.  
(NON) indicates that the property is non-operational and is subject to the provisions of LVMC Title 6.40.165

\*Please refer to the City of Las Vegas 'Gaming Enterprise Districts and Locations approved for NonRestricted Gaming' map for the location of the numbered sites above that are not shown on this map

NOTE:  
Gaming Enterprise Districts are governed by NRS 463.3072 through NRS 463.3094 inclusive, as amended by Senate Bill 208 from the 1997 Legislative Session.

The Future Summerlin Gaming Enterprise Districts are a result of the Summerlin West Development Agreement (DA-0001-96).

The Parkway Center Gaming Enterprise District is a result of GPA0029-01, which, following the procedures set forth in NRS 463.3086, was approved by the Las Vegas City Council.

The Las Vegas Boulevard Gaming Corridor is specified by NRS 463.3076 for non-restricted gaming.




The Peccole Ranch Gaming Enterprise District was established as part of Z01117-90.

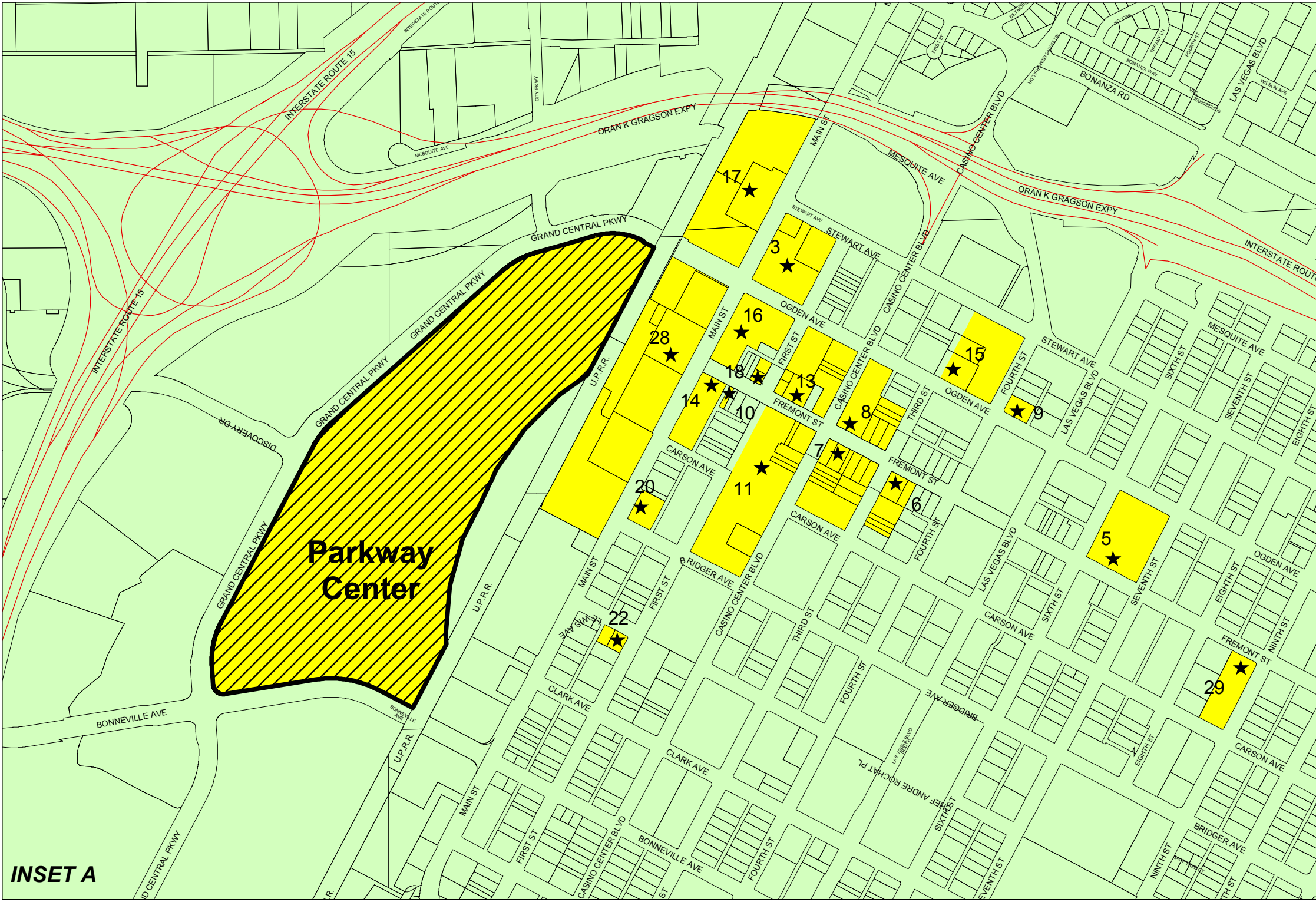
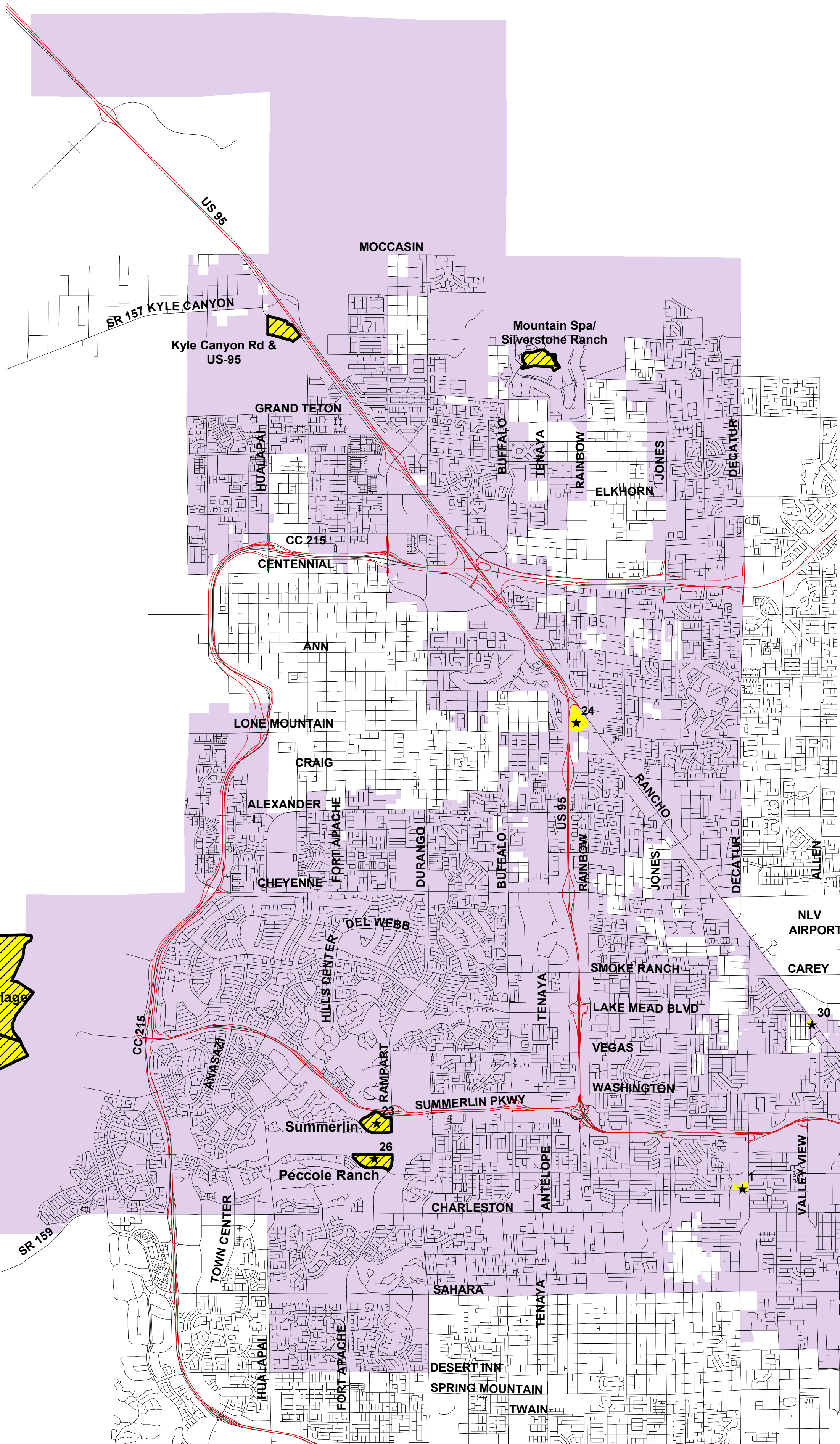
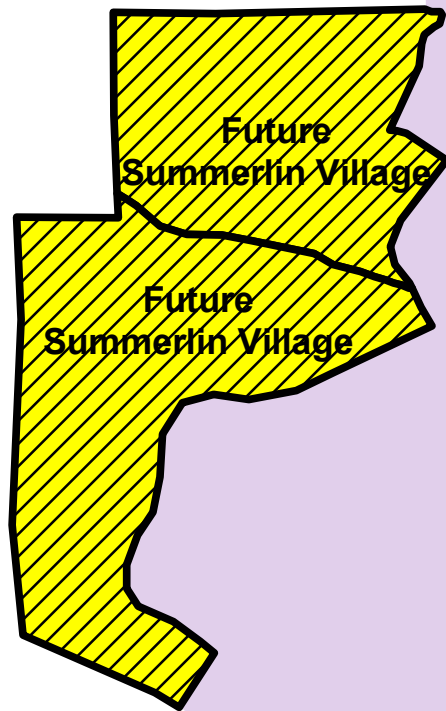
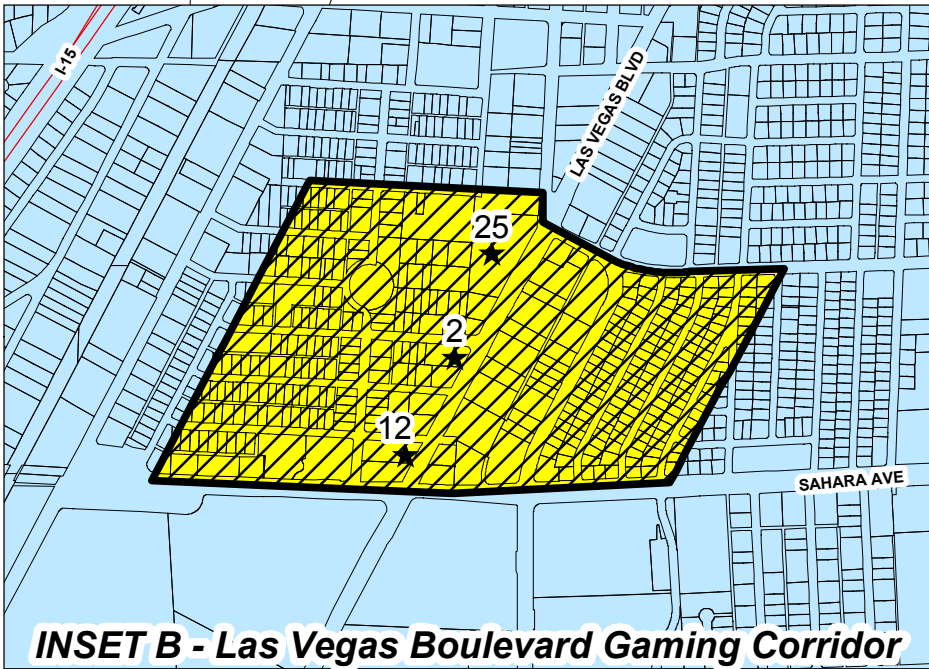
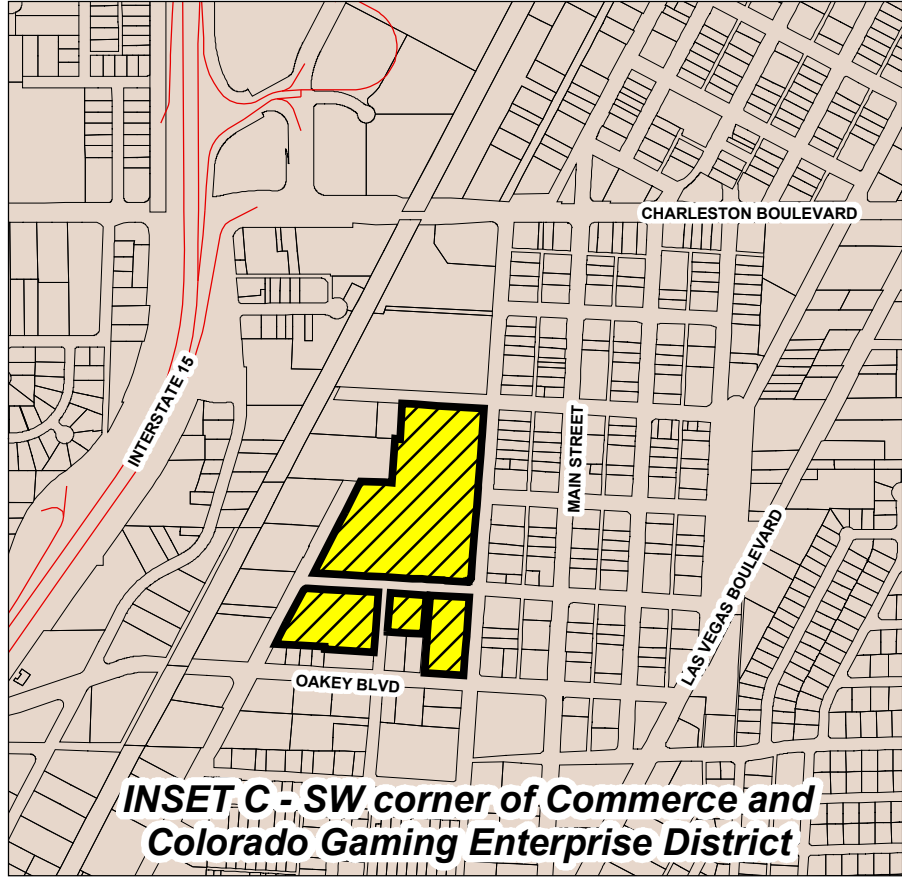
The Summerlin Gaming Enterprise District was established as part of Z0044-87.

The SW corner of Commerce and Colorado Gaming Enterprise District is a result of ZON21166, which, following the procedures set forth in NRS 463.3086, was approved by the Las Vegas City Council.

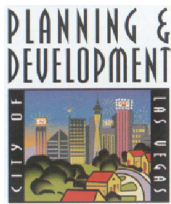
The Kyle Canyon Rd & US-95 Gaming Enterprise District is a result of ZON-20475, which, following the procedures set forth in NRS 463.3086, was approved by the Las Vegas City Council.

## Legend

-  Gaming Enterprise Districts
-  Non-Restricted Gaming Permitted
-  Existing Non-Restricted Gaming Locations



Data current as of: 1/9/2008



GIS maps are normally produced only to meet the needs of the City. Due to continuous development activity this map is for reference only. Geographic Information System Planning & Development Dept. 702-229-6361

