



Airline Origin and Destination Report 2007 3rd Quarter

Prepared for California Travel & Tourism Commission

February 2008

2007 3rd Quarter Visitor Air Arrivals on Domestic Flights (in thousands)

Origin	California	Pacific (not incl. Calif.)	Mountain	W. North Central	W. South Central	E. North Central	E. South Central	New England	Middle Atlantic	South Atlantic	Poss. & Territories	Total
California	1,901	1,570	1,774	373	615	778	195	369	881	1,052	34	9,542
Pacific (not incl. Calif.)	776	1,535	675	153	163	249	59	102	201	317	25	4,255
Mountain	1,221	712	1,114	393	474	650	146	208	456	737	15	6,127
W.North Central	420	259	564	157	296	505	110	154	304	774	14	3,556
W.South Central	778	350	966	331	1,305	651	227	219	589	1,263	45	6,723
E.North Central	833	380	1,140	464	548	459	268	395	849	2,077	54	7,467
E.South Central	194	110	251	102	212	242	46	105	216	603	16	2,097
New England	288	116	268	117	142	326	78	1	280	1,043	45	2,704
Middle Atlantic	942	336	865	281	491	899	207	365	359	3,190	270	8,203
South Atlantic	1,044	481	1,184	588	962	1,622	577	1,015	2,032	2,805	246	12,557
Territories	13	8	12	4	16	20	4	18	76	193	25	389
Total	8,407	5,857	8,813	2,963	5,223	6,400	1,916	2,952	6,243	14,054	791	63,620

Percent Change, 2007 3rd Quarter Over 2006 3rd Quarter

Origin	California	Pacific (not incl. Calif.)	Mountain	W. North Central	W. South Central	E. North Central	E. South Central	New England	Middle Atlantic	South Atlantic	Poss. & Territories	Total
California	6.1	-1.7	-0.6	3.7	3.2	3.0	-4.3	4.3	4.5	1.6	10.1	2.0
Pacific (not incl. Calif.)	3.3	11.1	6.2	5.2	6.5	8.1	-13.4	6.0	11.7	2.1	55.1	7.2
Mountain	0.3	0.2	-2.9	1.4	5.2	6.8	3.5	6.6	9.5	4.8	23.4	2.3
W.North Central	5.5	6.0	5.2	3.8	-1.0	7.1	-5.7	5.7	2.2	6.7	43.0	4.7
W.South Central	7.2	4.8	6.6	-1.5	-1.9	4.2	-13.3	11.1	10.7	7.0	42.7	4.1
E.North Central	8.5	6.5	7.3	1.8	2.9	-9.1	-9.0	8.5	2.5	4.5	17.3	3.7
E.South Central	3.4	3.5	6.3	-1.7	-1.8	0.4	-11.5	1.9	0.3	2.5	50.6	1.8
New England	8.8	0.0	5.0	5.1	11.6	1.5	-0.1	-75.0	-7.9	-0.3	-6.3	1.0
Middle Atlantic	8.4	9.2	8.6	-1.7	8.9	-0.2	-17.6	-11.1	-5.6	4.7	-9.8	2.6
South Atlantic	7.2	4.9	9.6	9.3	5.4	7.2	-5.5	7.7	6.3	6.7	17.4	6.6
Territories	-5.6	1.5	23.0	3.1	31.1	10.1	1.6	2.6	-9.1	18.9	-25.2	6.1
Total	5.6	4.2	4.3	2.9	2.8	3.4	-7.9	4.3	4.2	4.8	5.5	3.9

Source: U.S. Dept. of Transportation Origin and Destination Survey

Year-to-Date 2007 3rd Quarter Visitor Air Arrivals on Domestic Flights (in thousands)

Origin	California	Pacific (not incl. Calif.)	Mountain	W. North Central	W. South Central	E. North Central	E. South Central	New England	Middle Atlantic	South Atlantic	Poss. & Territories	Total
California	5,659	3,786	5,279	873	1,812	1,813	562	818	2,280	3,168	106	26,157
Pacific (not incl. Calif.)	2,413	4,297	2,145	375	507	582	183	227	509	1,048	69	12,356
Mountain	3,521	1,781	3,488	1,017	1,465	1,533	433	456	1,146	2,423	62	17,325
W.North Central	1,239	638	1,983	441	965	1,336	348	354	814	2,790	69	10,978
W.South Central	2,088	800	2,806	867	3,919	1,583	704	484	1,517	3,699	130	18,597
E.North Central	2,337	910	3,650	1,307	1,756	1,337	856	925	2,369	7,790	221	23,458
E.South Central	546	263	790	272	662	632	140	239	588	1,966	53	6,151
New England	836	278	852	294	458	841	236	3	829	3,915	200	8,743
Middle Atlantic	2,540	744	2,657	709	1,521	2,353	649	953	976	10,622	865	24,591
South Atlantic	2,864	1,125	3,650	1,457	2,872	4,055	1,767	2,383	5,379	8,752	767	35,071
Territories	35	21	32	11	44	49	11	46	196	522	74	1,040
Total	24,078	14,642	27,332	7,623	15,982	16,115	5,889	6,890	16,606	46,695	2,616	184,467

Percent Change, YTD 2007 3rd Quarter Over YTD 2006 3rd Quarter

Origin	California	Pacific (not incl. Calif.)	Mountain	W. North Central	W. South Central	E. North Central	E. South Central	New England	Middle Atlantic	South Atlantic	Poss. & Territories	Total
California	7.6	-0.3	-0.1	1.7	2.0	0.5	0.8	3.3	2.0	0.6	3.8	2.1
Pacific (not incl. Calif.)	3.4	14.9	3.9	3.7	2.7	2.7	-4.9	2.7	7.7	1.4	21.7	7.1
Mountain	2.6	2.2	-0.3	3.2	6.5	4.1	7.5	5.3	8.6	5.9	10.5	3.5
W.North Central	3.1	3.1	3.0	-1.2	-1.3	0.8	-6.5	3.6	0.8	3.8	9.0	1.9
W.South Central	4.2	3.3	4.7	-3.9	-2.0	0.7	-9.5	5.3	7.7	2.9	20.5	1.7
E.North Central	2.9	3.2	1.9	0.9	1.3	-10.6	-6.0	5.5	3.8	4.9	5.2	2.1
E.South Central	-1.1	-1.3	3.1	-5.2	-4.2	-3.4	-19.5	-4.0	0.3	0.7	14.2	-1.2
New England	1.9	-0.2	-1.6	1.5	4.3	-1.5	-4.1	-68.9	-8.9	-5.4	-1.7	-3.5
Middle Atlantic	3.3	7.3	5.8	-4.9	7.1	-1.4	-8.6	-9.3	-3.2	1.2	-13.2	0.4
South Atlantic	1.3	1.6	5.6	4.6	3.0	4.3	-2.1	4.6	4.4	5.5	10.2	4.1
Territories	3.9	1.3	8.8	9.9	21.3	7.9	8.0	6.6	-12.7	12.0	-28.6	1.7
Total	3.8	5.2	2.5	0.6	1.6	0.3	-4.4	2.0	2.8	2.6	-1.0	2.3

Source: U.S. Dept. of Transportation Origin and Destination Survey

2007 3rd Quarter Visitor Air Arrivals on Domestic Flights (in thousands)

Origin	California	Pacific (not incl. Calif.)	Mountain	W. North Central	W. South Central	E. North Central	E. South Central	New England	Middle Atlantic	South Atlantic	Poss. & Territories	Total
San Jose-San Francisco-Oakland, CA	708	538	555	101	159	222	44	137	279	294	8	3,044
Los Angeles-Long Beach-Riverside, CA	697	704	814	173	313	387	105	156	456	527	21	4,352
New York-Newark-Bridgeport, NY-NJ-CT-PA	633	197	491	149	281	558	94	174	122	1,991	216	4,905
Seattle-Tacoma-Olympia, WA	359	245	278	75	77	117	29	52	106	158	4	1,501
Phoenix-Mesa-Scottsdale, AZ	356	169	270	111	119	201	34	49	120	153	4	1,586
Chicago-Naperville-Michigan City, IL-IN-WI	361	142	442	232	234	185	112	168	434	749	32	3,090
Washington-Baltimore-N. Virginia, DC-MD-VA-WV	335	139	334	157	252	368	134	309	183	795	43	3,049
Denver-Aurora-Boulder, CO	270	154	264	130	147	198	44	73	140	251	4	1,674
Sacramento--Arden-Arcade--Truckee, CA-NV	247	142	129	35	48	51	17	19	39	71	2	800
Portland-Vancouver-Beaverton, OR-WA	223	115	180	39	44	71	16	28	52	78	2	845
Dallas-Fort Worth, TX	272	109	303	150	450	244	97	73	195	453	16	2,362
Boston-Worcester-Manchester, MA-RI-NH	205	74	163	73	87	206	40	1	214	654	29	1,746
San Diego-Carlsbad-San Marcos, CA	210	140	206	47	70	93	21	46	88	128	4	1,054
Houston-Baytown-Huntsville, TX	190	80	220	49	258	142	30	54	160	269	12	1,464
Atlanta-Sandy Springs-Gainesville, GA-AL	167	77	181	111	184	264	86	104	324	542	21	2,059
Salt Lake City-Ogden-Clearfield, UT	164	94	129	32	47	51	14	20	49	82	2	684
Las Vegas-Paradise-Pahrump, NV	161	85	124	39	43	71	18	17	52	78	2	690
Minneapolis-St. Paul-St. Cloud, MN-WI	150	99	170	46	69	172	37	59	116	223	4	1,146
Philadelphia-Camden-Vineland, PA-NJ-DE-MD	157	62	155	64	101	176	55	107	46	511	34	1,469
Detroit-Warren-Flint, MI	130	56	194	67	87	91	56	57	128	418	7	1,291
Miami-Fort Lauderdale-Miami Beach, FL	120	38	127	44	102	169	55	129	502	326	73	1,683
Kansas City-Overland Park-Kansas City, MO-KS	91	44	120	25	76	112	28	29	56	178	3	762
St. Louis-St. Charles-Farmington, MO-IL	84	45	95	45	84	102	17	32	64	192	4	765
Austin-Round Rock, TX	82	36	87	27	92	55	20	26	56	91	3	575
Tucson, AZ	65	23	51	14	18	32	7	10	23	33	1	277
Honolulu, HI	65	529	53	5	8	11	3	5	12	21	18	731
Indianapolis-Anderson-Columbus, IN	65	31	82	25	46	22	11	26	40	183	3	534
Albuquerque, NM	61	30	78	17	44	28	9	11	24	47	1	350
Cleveland-Akron-Elyria, OH	59	28	104	23	36	39	19	31	54	166	7	566
Orlando-The Villages, FL	61	32	86	46	63	149	50	78	212	153	59	990
Tampa-St. Petersburg-Clearwater, FL	55	29	88	42	73	146	60	85	201	182	16	977
Raleigh-Durham-Cary, NC	55	27	65	31	48	73	29	55	117	123	6	630
All other origins	1,550	1,544	2,174	739	1,462	1,597	524	729	1,581	3,937	130	15,967
Total	8,407	5,857	8,813	2,963	5,223	6,400	1,916	2,952	6,243	14,054	791	63,620

Source: U.S. Dept. of Transportation Origin and Destination Survey

Percent Change, 2007 3rd Quarter Over 2006 3rd Quarter

Origin	California	Pacific (not incl. Calif.)	Mountain	W. North Central	W. South Central	E. North Central	E. South Central	New England	Middle Atlantic	South Atlantic	Poss. & Territories	Total
San Jose-San Francisco-Oakland, CA	7.2	-0.3	8.9	9.5	8.3	6.6	0.7	2.4	6.8	2.8	13.1	5.4
Los Angeles-Long Beach-Riverside, CA	3.2	-3.9	-1.8	1.9	3.2	2.7	-4.5	3.8	5.2	0.3	12.5	0.7
New York-Newark-Bridgeport, NY-NJ-CT-PA	7.0	8.9	6.7	-4.7	5.6	1.3	-30.2	-22.0	-12.6	2.2	-11.3	0.2
Seattle-Tacoma-Olympia, WA	4.9	11.7	2.4	7.0	5.8	5.9	-11.0	1.5	15.3	2.2	-4.2	5.6
Phoenix-Mesa-Scottsdale, AZ	-5.7	-2.4	-5.8	-1.4	1.6	7.8	-7.3	9.3	9.4	8.2	50.0	-0.2
Chicago-Naperville-Michigan City, IL-IN-WI	8.8	-0.1	4.5	4.8	5.6	2.0	-4.3	10.4	8.1	5.7	10.6	5.5
Washington-Baltimore-N.Virginia, DC-MD-VA-WV	3.6	-0.3	7.3	8.1	6.0	5.8	-5.7	9.1	-2.2	7.9	21.7	5.5
Denver-Aurora-Boulder, CO	6.1	3.3	-1.5	2.6	15.8	9.1	18.5	6.4	12.2	8.7	6.2	6.6
Sacramento--Arden-Arcade--Truckee, CA-NV	7.6	4.8	-3.3	11.7	-7.3	1.6	-3.4	6.6	-1.9	7.4	6.1	3.2
Portland-Vancouver-Beaverton, OR-WA	2.6	13.6	3.2	3.6	8.8	10.3	-6.7	17.0	8.8	5.3	-4.4	5.9
Dallas-Fort Worth, TX	21.2	10.7	19.6	4.0	6.5	11.8	24.1	16.1	17.8	15.4	49.1	14.0
Boston-Worcester-Manchester, MA-RI-NH	11.3	2.4	7.0	4.2	13.5	5.5	-1.1	-78.1	-2.6	1.0	-2.4	3.2
San Diego-Carlsbad-San Marcos, CA	13.3	-1.8	-8.9	4.5	7.7	0.9	-7.3	17.7	2.2	6.6	-6.2	2.4
Houston-Baytown-Huntsville, TX	9.5	11.2	2.8	-28.1	-14.5	-4.7	-59.5	10.7	6.1	0.1	54.4	-4.2
Atlanta-Sandy Springs-Gainesville, GA-AL	4.6	8.2	7.9	18.4	6.4	5.9	-17.2	-0.5	5.8	5.0	-3.7	4.7
Salt Lake City-Ogden-Clearfield, UT	9.3	5.5	-7.7	7.5	12.7	2.7	2.1	-1.9	14.5	0.1	24.0	3.6
Las Vegas-Paradise-Pahrump, NV	7.6	-7.8	7.1	8.5	3.4	11.1	15.6	19.0	7.7	17.0	-0.2	6.8
Minneapolis-St. Paul-St. Cloud, MN-WI	14.2	4.5	4.5	6.3	4.2	9.3	-0.9	3.7	5.1	10.8	73.5	7.6
Philadelphia-Camden-Vineland, PA-NJ-DE-MD	12.2	9.1	6.3	10.2	14.8	3.1	-1.6	0.8	7.4	11.8	-14.1	7.9
Detroit-Warren-Flint, MI	5.4	7.2	14.6	7.1	17.4	-0.9	-12.0	15.1	5.6	8.0	60.9	7.7
Miami-Fort Lauderdale-Miami Beach, FL	10.6	5.6	10.2	3.2	13.1	5.3	-1.9	1.5	9.0	4.8	24.3	7.6
Kansas City-Overland Park-Kansas City, MO-KS	5.4	8.1	4.8	-7.7	-5.2	8.9	-12.4	0.4	0.8	4.8	26.5	3.0
St. Louis-St. Charles-Farmington, MO-IL	8.2	7.6	8.8	10.7	-2.8	4.8	8.2	19.7	4.0	10.5	53.6	7.4
Austin-Round Rock, TX	2.9	7.8	1.0	32.7	6.4	10.8	2.2	14.1	16.4	14.6	52.0	9.0
Tucson, AZ	-12.4	-11.0	-12.5	-8.8	-7.4	-2.2	1.6	2.1	2.3	-6.2	34.7	-8.0
Honolulu, HI	4.2	13.5	12.6	-7.9	6.2	5.0	-26.0	3.9	9.9	-3.1	99.4	12.4
Indianapolis-Anderson-Columbus, IN	1.9	2.7	4.4	4.2	10.3	-8.1	-3.5	27.2	-11.2	9.8	9.2	5.1
Albuquerque, NM	0.0	9.4	5.0	2.4	-1.3	3.6	-6.8	4.4	9.2	-2.2	88.7	2.4
Cleveland-Akron-Elyria, OH	0.9	-0.9	2.5	-41.7	-20.6	-47.3	-34.8	-28.4	-14.1	-16.0	22.1	-17.5
Orlando-The Villages, FL	10.5	-0.3	3.8	5.8	5.7	12.0	16.4	9.4	10.3	14.2	12.1	10.0
Tampa-St. Petersburg-Clearwater, FL	0.0	1.6	9.7	-1.8	11.1	0.6	-1.5	1.8	9.7	5.7	12.8	4.9
Raleigh-Durham-Cary, NC	10.4	0.6	10.2	5.6	-8.0	-0.9	-12.3	19.0	6.8	4.3	16.2	4.4
All other origins	3.2	6.6	6.0	3.0	-0.1	2.0	-7.1	7.7	-0.6	4.2	7.4	3.2
Total	5.6	4.2	4.3	2.9	2.8	3.4	-7.9	4.3	4.2	4.8	5.5	3.9

Source: U.S. Dept. of Transportation Origin and Destination Survey

Year-to-Date 2007 3rd Quarter Visitor Air Arrivals on Domestic Flights (in thousands)

Origin	California	Pacific (not incl. Calif.)	Mountain	W. North Central	W. South Central	E. North Central	E. South Central	New England	Middle Atlantic	South Atlantic	Poss. & Territories	Total
San Jose-San Francisco-Oakland, CA	2,112	1,352	1,605	238	474	517	129	310	743	909	27	8,415
Los Angeles-Long Beach-Riverside, CA	2,087	1,609	2,443	405	915	905	298	346	1,166	1,552	59	11,786
New York-Newark-Bridgeport, NY-NJ-CT-PA	1,685	429	1,517	384	876	1,460	318	477	316	6,449	665	14,576
Seattle-Tacoma-Olympia, WA	1,112	665	899	181	239	279	88	116	270	515	16	4,380
Phoenix-Mesa-Scottsdale, AZ	996	423	784	275	360	468	100	109	300	490	15	4,322
Chicago-Naperville-Michigan City, IL-IN-WI	1,024	347	1,417	652	734	519	349	396	1,210	2,684	119	9,452
Washington-Baltimore-N.Virginia, DC-MD-VA-WV	912	315	996	381	735	953	408	752	542	2,548	135	8,677
Denver-Aurora-Boulder, CO	796	382	910	359	461	483	130	160	359	857	20	4,917
Sacramento--Arden-Arcade--Truckee, CA-NV	747	378	413	82	150	121	51	43	97	223	6	2,310
Portland-Vancouver-Beaverton, OR-WA	695	323	570	96	136	161	47	60	133	261	8	2,492
Dallas-Fort Worth, TX	719	255	870	386	1,302	594	274	162	503	1,278	45	6,388
Boston-Worcester-Manchester, MA-RI-NH	601	180	535	182	284	540	122	2	648	2,485	139	5,718
San Diego-Carlsbad-San Marcos, CA	595	334	611	111	205	215	63	97	226	383	12	2,852
Houston-Baytown-Huntsville, TX	506	181	655	138	813	347	130	120	426	820	35	4,170
Atlanta-Sandy Springs-Gainesville, GA-AL	464	185	587	275	557	667	289	247	862	1,690	68	5,889
Salt Lake City-Ogden-Clearfield, UT	478	248	414	83	146	125	44	46	126	272	10	1,992
Las Vegas-Paradise-Pahrump, NV	449	200	356	90	127	155	50	34	127	227	6	1,820
Minneapolis-St. Paul-St. Cloud, MN-WI	460	248	688	128	245	469	115	138	315	950	32	3,790
Philadelphia-Camden-Vineland, PA-NJ-DE-MD	427	138	494	149	301	444	156	273	125	1,673	123	4,302
Detroit-Warren-Flint, MI	370	139	624	188	274	263	181	148	347	1,705	36	4,275
Miami-Fort Lauderdale-Miami Beach, FL	324	91	418	109	294	419	167	303	1,304	959	212	4,601
Kansas City-Overland Park-Kansas City, MO-KS	254	106	369	73	238	284	92	65	150	565	10	2,206
St. Louis-St. Charles-Farmington, MO-IL	233	102	296	124	261	271	48	72	168	606	16	2,196
Austin-Round Rock, TX	218	77	249	66	272	129	55	56	138	261	7	1,530
Tucson, AZ	180	49	146	32	53	71	22	22	57	98	3	732
Honolulu, HI	194	1,473	160	13	25	25	9	12	32	66	41	2,049
Indianapolis-Anderson-Columbus, IN	184	74	256	67	144	65	35	48	99	670	11	1,653
Albuquerque, NM	182	70	243	46	139	67	25	26	61	157	3	1,020
Cleveland-Akron-Elyria, OH	165	65	322	75	128	135	68	79	159	662	24	1,882
Orlando-The Villages, FL	171	75	271	111	182	337	132	177	525	425	184	2,589
Tampa-St. Petersburg-Clearwater, FL	153	71	279	103	216	350	177	196	508	544	52	2,650
Raleigh-Durham-Cary, NC	153	64	196	79	155	189	98	129	310	409	23	1,804
All other origins	4,433	3,994	6,739	1,939	4,540	4,090	1,617	1,670	4,255	13,301	455	47,032
Total	24,078	14,642	27,332	7,623	15,982	16,115	5,889	6,890	16,606	46,695	2,616	184,467

Source: U.S. Dept. of Transportation Origin and Destination Survey

Percent Change, YTD 2007 3rd Quarter Over YTD 2006 3rd Quarter

Origin	California	Pacific (not incl. Calif.)	Mountain	W. North Central	W. South Central	E. North Central	E. South Central	New England	Middle Atlantic	South Atlantic	Poss. & Territories	Total
San Jose-San Francisco-Oakland, CA	7.2	0.3	2.9	7.1	4.0	1.7	2.6	3.0	4.0	0.3	6.9	3.4
Los Angeles-Long Beach-Riverside, CA	6.9	-2.6	-0.7	-0.3	2.1	0.6	1.0	2.9	1.1	0.5	3.5	1.1
New York-Newark-Bridgeport, NY-NJ-CT-PA	2.7	7.8	7.3	-5.1	6.4	0.3	-16.1	-17.4	-5.2	-1.1	-15.5	-1.1
Seattle-Tacoma-Olympia, WA	3.0	7.0	0.2	4.1	2.0	0.7	-5.9	-1.6	6.6	0.5	10.4	2.4
Phoenix-Mesa-Scottsdale, AZ	-2.1	2.7	-3.2	1.3	4.7	5.4	-3.6	7.0	9.5	8.6	35.4	1.9
Chicago-Naperville-Michigan City, IL-IN-WI	3.6	-0.4	2.4	3.8	4.0	-4.2	-2.3	6.8	9.7	5.8	4.0	4.1
Washington-Baltimore-N.Virginia, DC-MD-VA-WV	-0.7	-3.4	6.3	3.0	1.9	5.1	-3.7	6.3	3.0	4.8	7.7	3.3
Denver-Aurora-Boulder, CO	8.9	4.7	2.7	8.9	17.8	8.0	26.3	7.5	9.8	11.3	-1.5	8.8
Sacramento--Arden-Arcade--Truckee, CA-NV	9.3	5.9	-1.4	6.4	-4.0	2.0	-1.8	6.8	-2.4	1.7	5.4	3.7
Portland-Vancouver-Beaverton, OR-WA	2.7	9.5	1.4	2.9	2.4	5.0	-3.8	8.9	7.8	1.5	5.9	3.5
Dallas-Fort Worth, TX	13.7	7.4	13.7	-1.7	2.0	7.2	18.2	7.8	11.2	8.6	22.8	8.2
Boston-Worcester-Manchester, MA-RI-NH	3.4	1.1	1.0	1.5	5.0	4.2	-1.4	-71.4	-3.4	-4.3	-0.1	-1.3
San Diego-Carlsbad-San Marcos, CA	12.0	2.0	-2.9	3.2	7.3	-0.8	-0.7	8.1	3.3	3.0	-0.2	3.4
Houston-Baytown-Huntsville, TX	3.8	8.7	4.6	-22.0	-8.8	-5.5	-39.2	5.8	10.6	-1.8	29.5	-2.8
Atlanta-Sandy Springs-Gainesville, GA-AL	0.1	4.5	6.2	11.4	5.1	1.4	-9.3	-1.8	4.8	4.0	-2.6	3.1
Salt Lake City-Ogden-Clearfield, UT	8.2	6.8	-3.3	5.3	7.4	-0.5	11.2	-0.1	10.5	1.4	26.0	3.9
Las Vegas-Paradise-Pahrump, NV	8.0	-1.9	4.7	4.0	5.8	5.0	12.6	6.4	5.7	12.9	-6.8	6.0
Minneapolis-St. Paul-St. Cloud, MN-WI	7.9	3.9	3.2	-2.5	2.1	3.0	-7.2	0.4	5.2	5.2	15.7	3.8
Philadelphia-Camden-Vineland, PA-NJ-DE-MD	4.4	7.2	1.1	-2.2	10.0	0.0	6.1	-5.0	6.2	4.4	-12.7	2.6
Detroit-Warren-Flint, MI	3.2	5.5	8.4	5.8	6.4	-3.3	-5.9	24.9	3.6	15.8	18.0	9.0
Miami-Fort Lauderdale-Miami Beach, FL	1.8	2.4	3.8	0.1	4.0	1.0	1.7	-1.4	2.6	4.0	9.4	2.8
Kansas City-Overland Park-Kansas City, MO-KS	3.6	5.3	6.8	-4.0	-4.3	1.7	-2.9	-0.9	-2.0	3.5	0.0	1.9
St. Louis-St. Charles-Farmington, MO-IL	0.5	0.1	3.0	3.6	-2.6	-2.0	-5.6	16.4	-2.1	4.4	26.0	1.6
Austin-Round Rock, TX	1.2	4.9	3.8	23.1	3.3	4.8	2.0	6.8	2.3	9.6	13.2	5.1
Tucson, AZ	-8.4	-11.7	-2.8	-14.3	-5.1	-4.0	8.0	6.5	15.2	-4.5	32.7	-4.2
Honolulu, HI	4.6	20.0	9.3	-4.0	5.7	-4.0	-10.0	0.8	6.0	-4.5	34.3	15.5
Indianapolis-Anderson-Columbus, IN	1.4	3.2	-6.8	5.8	6.0	-8.0	-2.0	-1.1	-19.2	6.7	-14.7	0.5
Albuquerque, NM	2.9	2.8	1.8	3.3	0.9	-0.6	-5.9	0.9	5.2	-1.2	14.7	1.4
Cleveland-Akron-Elyria, OH	-2.5	-2.0	-4.0	-29.9	-13.2	-37.2	-26.3	-26.4	-15.1	-11.0	11.1	-14.2
Orlando-The Villages, FL	2.8	-2.8	2.1	4.6	3.7	10.0	10.1	6.6	3.4	11.6	16.6	6.6
Tampa-St. Petersburg-Clearwater, FL	-5.3	-2.7	2.4	-2.5	10.2	1.2	9.5	-3.0	4.2	7.1	4.4	3.3
Raleigh-Durham-Cary, NC	-0.3	-0.5	3.9	1.3	-4.4	-1.2	-4.0	17.4	9.1	6.2	23.1	3.9
All other origins	1.0	7.7	2.3	-0.6	-1.0	-1.8	-7.3	5.2	0.2	1.8	-0.6	1.2
Total	3.8	5.2	2.5	0.6	1.6	0.3	-4.4	2.0	2.8	2.6	-1.0	2.3

Source: U.S. Dept. of Transportation Origin and Destination Survey

2007 3rd Quarter Visitor Air Arrivals on Domestic Flights (in thousands)

Origin	LA Metro	Bay Area	San Diego	Sacramento	Other Calif.	Total
San Jose-San Francisco-Oakland, CA	499		199	0	9	708
Los Angeles-Long Beach-Riverside, CA	1	517	4	155	20	697
New York-Newark-Bridgeport, NY-NJ-CT-PA	295	248	72	10	7	633
Seattle-Tacoma-Olympia, WA	160	118	46	25	10	359
Phoenix-Mesa-Scottsdale, AZ	158	96	72	20	10	356
Chicago-Naperville-Michigan City, IL-IN-WI	160	129	53	12	6	361
Washington-Baltimore-N.Virginia, DC-MD-VA-WV	140	125	51	11	8	335
Denver-Aurora-Boulder, CO	108	98	40	15	9	270
Sacramento--Arden-Arcade--Truckee, CA-NV	175	0	70		1	247
Portland-Vancouver-Beaverton, OR-WA	84	76	27	29	6	223
Dallas-Fort Worth, TX	130	84	36	13	8	272
Boston-Worcester-Manchester, MA-RI-NH	76	93	28	5	4	205
San Diego-Carlsbad-San Marcos, CA	4	155		48	3	210
Houston-Baytown-Huntsville, TX	92	60	27	9	3	190
Atlanta-Sandy Springs-Gainesville, GA-AL	77	60	22	6	3	167
Salt Lake City-Ogden-Clearfield, UT	84	42	26	8	4	164
Las Vegas-Paradise-Pahrump, NV	66	51	29	10	5	161
Minneapolis-St. Paul-St. Cloud, MN-WI	58	59	23	8	3	150
Philadelphia-Camden-Vineland, PA-NJ-DE-MD	68	57	23	6	4	157
Detroit-Warren-Flint, MI	60	44	19	5	2	130
Miami-Fort Lauderdale-Miami Beach, FL	62	42	11	3	2	120
Kansas City-Overland Park-Kansas City, MO-KS	38	28	19	5	2	91
St. Louis-St. Charles-Farmington, MO-IL	38	25	14	5	2	84
Austin-Round Rock, TX	29	35	12	3	2	82
Tucson, AZ	31	13	16	3	2	65
Honolulu, HI	35	19	8	3	1	65
Indianapolis-Anderson-Columbus, IN	28	23	10	3	1	65
Albuquerque, NM	27	18	13	2	1	61
Cleveland-Akron-Elyria, OH	26	21	8	3	1	59
Orlando-The Villages, FL	30	17	8	3	2	61
Tampa-St. Petersburg-Clearwater, FL	24	19	8	3	1	55
Raleigh-Durham-Cary, NC	21	21	9	3	1	55
Other Origins	663	497	256	86	48	1,550
Total	3,547	2,890	1,258	518	193	8,407

Source: U.S. Dept. of Transportation Origin and Destination Survey

Percent Change, 2007 3rd Quarter Over 2006 3rd Quarter

Origin	LA Metro	Bay Area	San Diego	Sacramento	Other Calif.	Total
San Jose-San Francisco-Oakland, CA	2.8		20.8	-55.7	0.4	7.2
Los Angeles-Long Beach-Riverside, CA	1.3	2.5	-4.3	5.2	10.3	3.2
New York-Newark-Bridgeport, NY-NJ-CT-PA	6.6	8.7	7.5	-21.1	22.5	7.0
Seattle-Tacoma-Olympia, WA	9.3	3.3	-5.7	1.4	23.2	4.9
Phoenix-Mesa-Scottsdale, AZ	-10.1	4.6	-0.1	-16.0	-29.9	-5.7
Chicago-Naperville-Michigan City, IL-IN-WI	7.4	12.0	6.6	0.3	19.2	8.8
Washington-Baltimore-N.Virginia, DC-MD-VA-WV	1.9	7.3	0.4	-4.7	9.7	3.6
Denver-Aurora-Boulder, CO	3.8	13.0	3.3	-1.2	-8.9	6.1
Sacramento--Arden-Arcade--Truckee, CA-NV	6.8	-4.6	10.2		-19.7	7.6
Portland-Vancouver-Beaverton, OR-WA	1.3	0.8	2.5	9.6	12.4	2.6
Dallas-Fort Worth, TX	17.5	22.8	30.6	26.0	18.3	21.2
Boston-Worcester-Manchester, MA-RI-NH	8.1	9.1	28.7	3.4	39.6	11.3
San Diego-Carlsbad-San Marcos, CA	-15.9	16.4		8.2	-1.8	13.3
Houston-Baytown-Huntsville, TX	12.9	6.0	12.2	12.8	-29.6	9.5
Atlanta-Sandy Springs-Gainesville, GA-AL	-0.8	5.4	30.4	-4.9	1.2	4.6
Salt Lake City-Ogden-Clearfield, UT	5.9	11.6	30.6	-8.9	-6.6	9.3
Las Vegas-Paradise-Pahrump, NV	2.1	18.3	7.4	4.4	-4.6	7.6
Minneapolis-St. Paul-St. Cloud, MN-WI	8.1	18.7	13.3	31.4	21.5	14.2
Philadelphia-Camden-Vineland, PA-NJ-DE-MD	14.2	14.3	-3.3	25.6	51.6	12.2
Detroit-Warren-Flint, MI	2.1	5.5	14.3	11.2	11.3	5.4
Miami-Fort Lauderdale-Miami Beach, FL	12.1	7.3	11.5	12.6	37.5	10.6
Kansas City-Overland Park-Kansas City, MO-KS	1.0	10.9	8.0	-1.4	11.9	5.4
St. Louis-St. Charles-Farmington, MO-IL	5.3	5.9	15.4	12.8	35.2	8.2
Austin-Round Rock, TX	1.0	7.2	1.3	-17.2	9.4	2.9
Tucson, AZ	-13.6	-15.0	-1.4	-34.4	-18.1	-12.4
Honolulu, HI	2.9	1.4	8.3	35.1	20.0	4.2
Indianapolis-Anderson-Columbus, IN	-9.3	20.9	1.1	3.8	-4.6	1.9
Albuquerque, NM	-4.5	9.5	7.1	-31.3	-9.1	0.0
Cleveland-Akron-Elyria, OH	-3.6	5.2	6.0	13.8	-30.1	0.9
Orlando-The Villages, FL	10.3	3.6	16.2	22.4	49.7	10.5
Tampa-St. Petersburg-Clearwater, FL	-4.2	4.3	0.0	-0.4	27.6	0.0
Raleigh-Durham-Cary, NC	5.8	11.7	18.4	4.1	35.2	10.4
Other Origins	1.4	8.0	-0.5	-2.3	11.3	3.2
Total	3.6	7.9	7.8	2.2	6.1	5.6

Source: U.S. Dept. of Transportation Origin and Destination Survey

Year-to-Date 2007 3rd Quarter Visitor Air Arrivals on Domestic Flights (in thousands)

Origin	LA Metro	Bay Area	San Diego	Sacramento	Other Calif.	Total
San Jose-San Francisco-Oakland, CA	1,556		530	1	26	2,112
Los Angeles-Long Beach-Riverside, CA	4	1,524	13	490	55	2,087
New York-Newark-Bridgeport, NY-NJ-CT-PA	827	615	197	28	18	1,685
Seattle-Tacoma-Olympia, WA	524	342	141	73	31	1,112
Phoenix-Mesa-Scottsdale, AZ	479	249	178	63	27	996
Chicago-Naperville-Michigan City, IL-IN-WI	492	325	156	34	16	1,024
Washington-Baltimore-N.Virginia, DC-MD-VA-WV	392	322	148	31	20	912
Denver-Aurora-Boulder, CO	346	260	120	43	27	796
Sacramento--Arden-Arcade--Truckee, CA-NV	545	1	196		5	747
Portland-Vancouver-Beaverton, OR-WA	290	220	83	83	19	695
Dallas-Fort Worth, TX	354	214	96	34	21	719
Boston-Worcester-Manchester, MA-RI-NH	241	255	82	14	10	601
San Diego-Carlsbad-San Marcos, CA	12	428		143	11	595
Houston-Baytown-Huntsville, TX	251	154	69	21	10	506
Atlanta-Sandy Springs-Gainesville, GA-AL	226	159	55	17	7	464
Salt Lake City-Ogden-Clearfield, UT	266	114	62	25	11	478
Las Vegas-Paradise-Pahrump, NV	201	128	75	30	15	449
Minneapolis-St. Paul-St. Cloud, MN-WI	195	154	84	18	9	460
Philadelphia-Camden-Vineland, PA-NJ-DE-MD	197	143	65	14	9	427
Detroit-Warren-Flint, MI	184	112	54	14	6	370
Miami-Fort Lauderdale-Miami Beach, FL	178	104	31	8	4	324
Kansas City-Overland Park-Kansas City, MO-KS	113	69	52	14	5	254
St. Louis-St. Charles-Farmington, MO-IL	114	63	38	12	6	233
Austin-Round Rock, TX	83	89	32	9	5	218
Tucson, AZ	93	34	40	7	6	180
Honolulu, HI	107	56	21	9	1	194
Indianapolis-Anderson-Columbus, IN	85	57	29	9	4	184
Albuquerque, NM	84	52	34	7	5	182
Cleveland-Akron-Elyria, OH	79	52	25	7	2	165
Orlando-The Villages, FL	88	46	24	8	5	171
Tampa-St. Petersburg-Clearwater, FL	73	46	23	7	4	153
Raleigh-Durham-Cary, NC	60	55	26	8	3	153
Other Origins	2,024	1,271	756	246	136	4,433
Total	10,763	7,716	3,534	1,525	540	24,078

Source: U.S. Dept. of Transportation Origin and Destination Survey

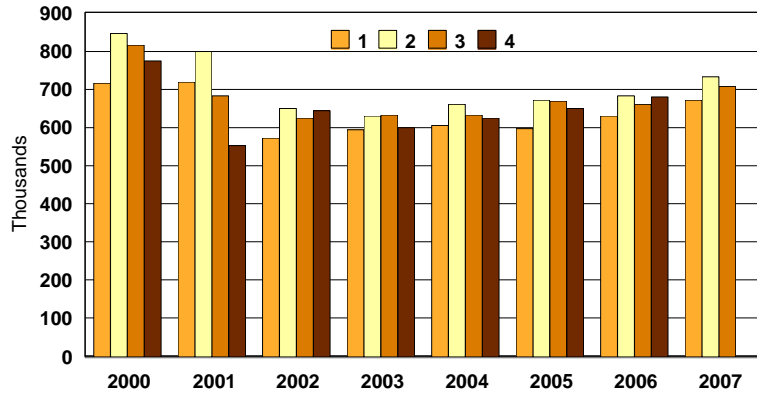
Percent Change, YTD 2007 3rd Quarter Over YTD 2006 3rd Quarter

Origin	LA Metro	Bay Area	San Diego	Sacramento	Other Calif.	Total
San Jose-San Francisco-Oakland, CA	5.7		13.4	-47.9	-14.8	7.2
Los Angeles-Long Beach-Riverside, CA	-8.9	6.3	-9.3	9.2	8.9	6.9
New York-Newark-Bridgeport, NY-NJ-CT-PA	1.3	4.1	6.0	-12.1	8.3	2.7
Seattle-Tacoma-Olympia, WA	4.9	1.9	-4.1	4.3	18.7	3.0
Phoenix-Mesa-Scottsdale, AZ	-3.9	2.2	-1.4	-2.0	-10.5	-2.1
Chicago-Naperville-Michigan City, IL-IN-WI	5.1	2.9	0.6	3.3	6.1	3.6
Washington-Baltimore-N.Virginia, DC-MD-VA-WV	-1.2	2.8	-6.3	0.0	-1.8	-0.7
Denver-Aurora-Boulder, CO	9.7	10.2	10.2	5.1	-8.6	8.9
Sacramento--Arden-Arcade--Truckee, CA-NV	9.3	-24.8	10.4		-11.7	9.3
Portland-Vancouver-Beaverton, OR-WA	2.6	1.2	1.2	7.0	11.5	2.7
Dallas-Fort Worth, TX	8.3	17.2	30.1	13.9	7.2	13.7
Boston-Worcester-Manchester, MA-RI-NH	4.1	1.5	6.4	6.4	7.5	3.4
San Diego-Carlsbad-San Marcos, CA	-0.5	14.1		8.4	-1.4	12.0
Houston-Baytown-Huntsville, TX	3.9	4.1	8.2	-2.0	-13.7	3.8
Atlanta-Sandy Springs-Gainesville, GA-AL	-3.1	1.7	9.4	7.6	-11.3	0.1
Salt Lake City-Ogden-Clearfield, UT	9.5	7.7	12.6	-3.3	-8.5	8.2
Las Vegas-Paradise-Pahrump, NV	5.2	13.3	6.8	6.0	13.1	8.0
Minneapolis-St. Paul-St. Cloud, MN-WI	2.3	11.1	15.7	10.8	12.9	7.9
Philadelphia-Camden-Vineland, PA-NJ-DE-MD	6.6	1.3	1.6	10.5	24.1	4.4
Detroit-Warren-Flint, MI	1.1	4.1	5.6	10.9	17.9	3.2
Miami-Fort Lauderdale-Miami Beach, FL	3.1	0.0	1.6	-1.9	3.2	1.8
Kansas City-Overland Park-Kansas City, MO-KS	0.3	8.2	8.7	-7.6	2.2	3.6
St. Louis-St. Charles-Farmington, MO-IL	-0.6	0.9	1.4	2.2	8.6	0.5
Austin-Round Rock, TX	-1.9	5.5	0.9	-10.2	4.9	1.2
Tucson, AZ	-7.5	-9.3	-4.5	-24.6	-17.8	-8.4
Honolulu, HI	1.0	6.4	9.4	37.1	3.7	4.6
Indianapolis-Anderson-Columbus, IN	-3.3	15.3	-6.6	-4.2	6.0	1.4
Albuquerque, NM	-0.5	10.1	5.1	-15.6	12.5	2.9
Cleveland-Akron-Elyria, OH	-4.2	0.7	0.7	-3.8	-30.9	-2.5
Orlando-The Villages, FL	3.8	-2.9	10.8	4.9	2.5	2.8
Tampa-St. Petersburg-Clearwater, FL	-4.9	-7.8	-0.9	-11.1	5.3	-5.3
Raleigh-Durham-Cary, NC	1.6	-3.3	-0.4	5.2	5.3	-0.3
Other Origins	1.4	1.0	-0.5	-0.8	6.5	1.0
Total	3.0	4.6	4.5	4.3	2.8	3.8

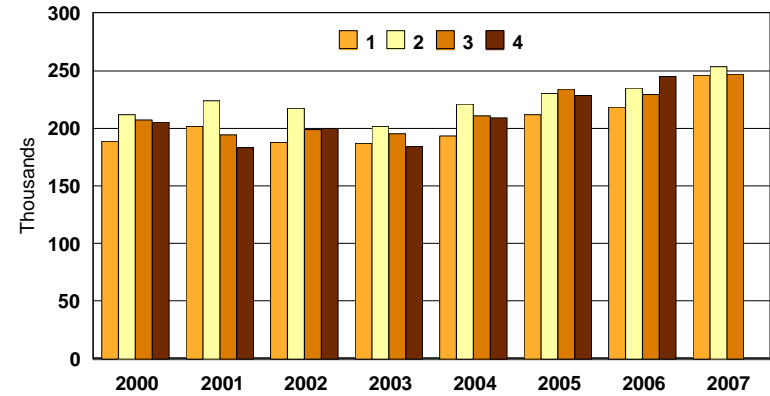
Source: U.S. Dept. of Transportation Origin and Destination Survey

California Metro Origins to Other California Destinations Visitors by Year and Quarter

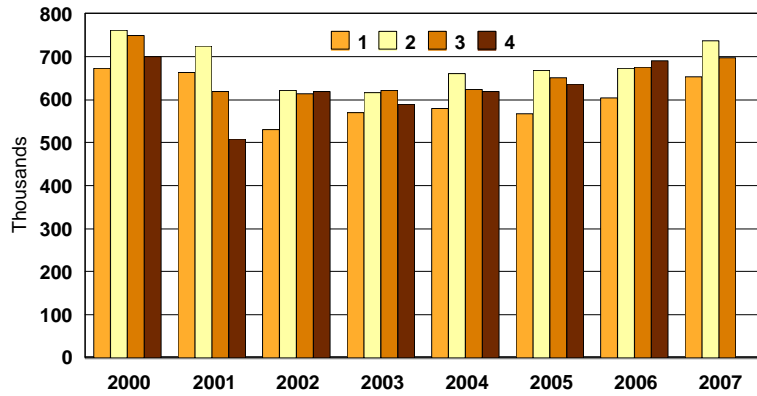
San Jose-San Francisco-Oakland, CA



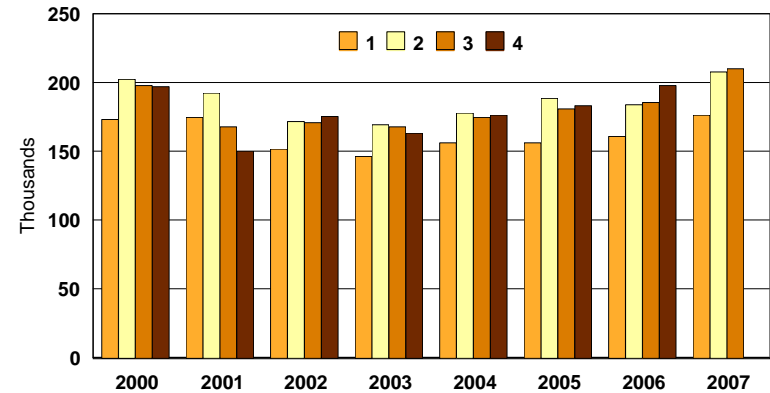
Sacramento--Arden-Arcade--Truckee, CA-NV



Los Angeles-Long Beach-Riverside, CA



San Diego-Carlsbad-San Marcos, CA

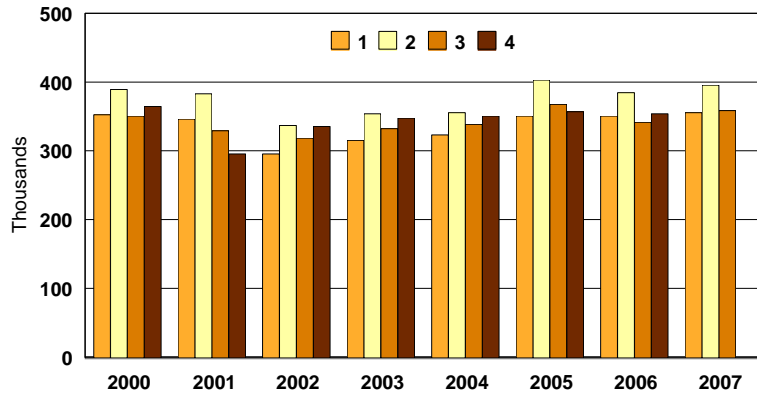


Source: U.S. Dept. of Transportation Origin and Destination Survey

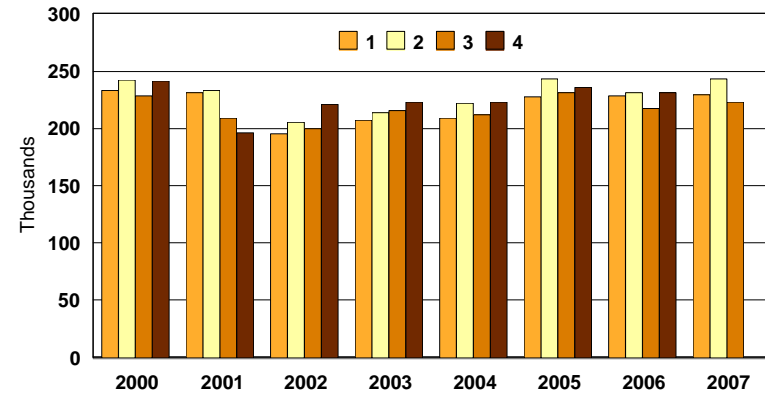
Northwest/West Metro Origins to California Destinations

Visitors by Year and Quarter

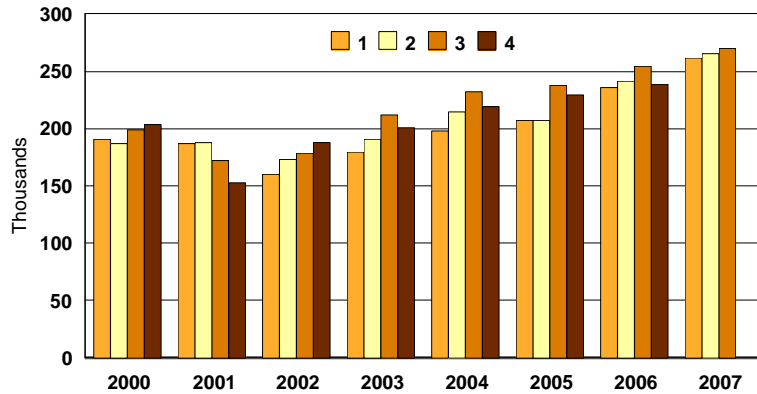
Seattle-Tacoma-Olympia, WA



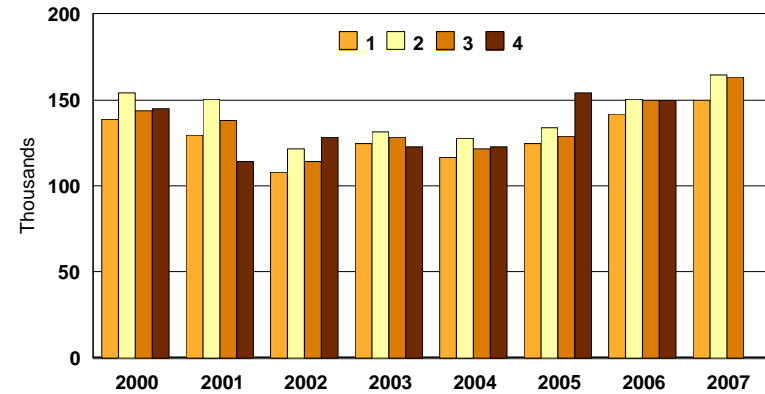
Portland-Vancouver-Beaverton, OR-WA



Denver-Aurora-Boulder, CO



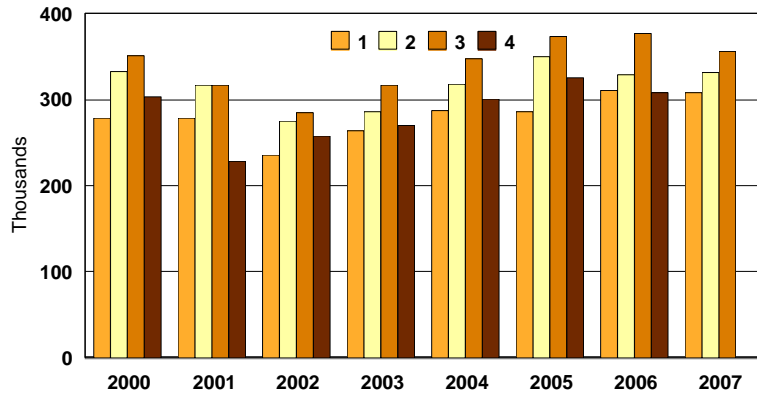
Salt Lake City-Ogden-Clearfield, UT



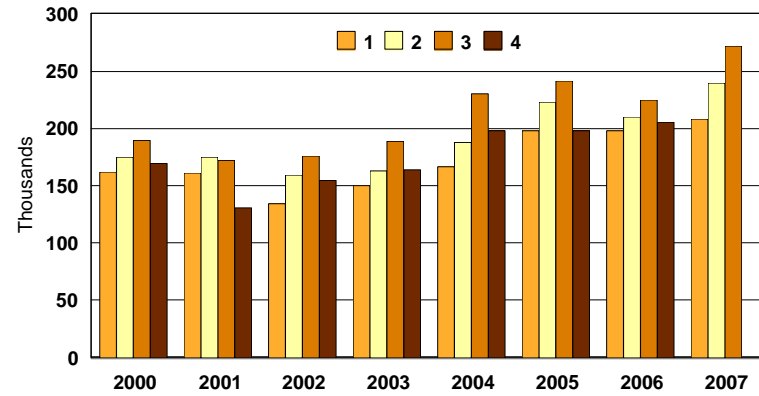
Source: U.S. Dept. of Transportation Origin and Destination Survey

Southwest Metro Origins to California Destinations Visitors by Year and Quarter

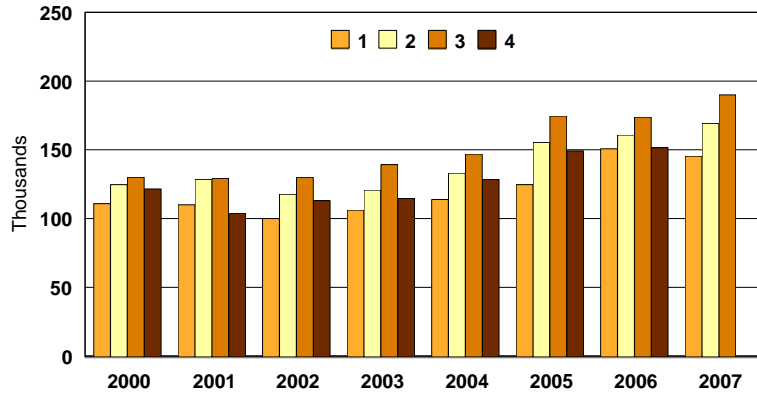
Phoenix-Mesa-Scottsdale, AZ



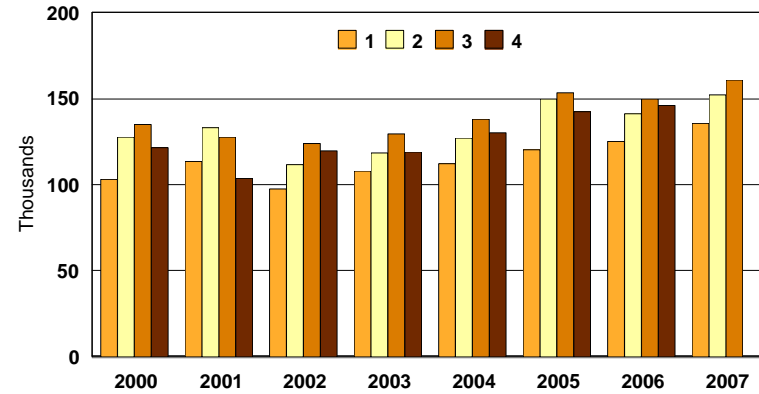
Dallas-Fort Worth, TX



Houston-Baytown-Huntsville, TX



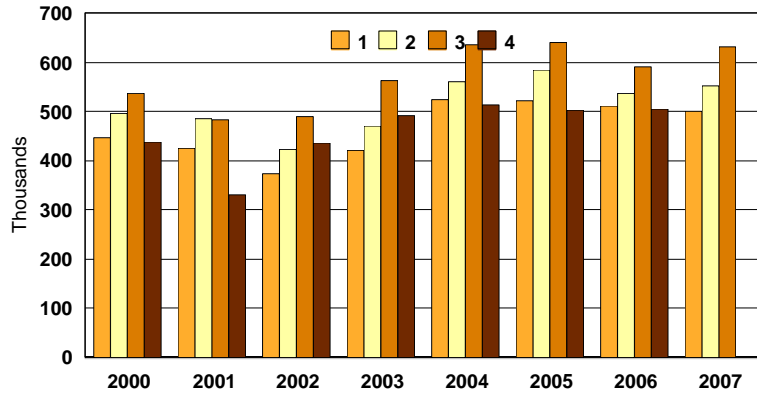
Las Vegas-Paradise-Pahrump, NV



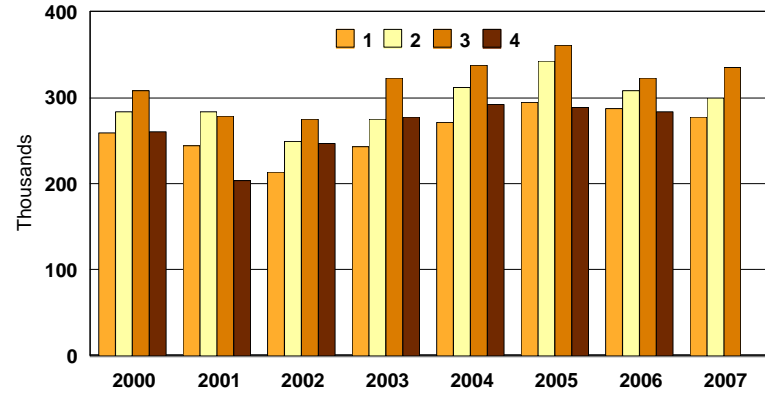
Source: U.S. Dept. of Transportation Origin and Destination Survey

Eastern Metro Origins to California Destinations Visitors by Year and Quarter

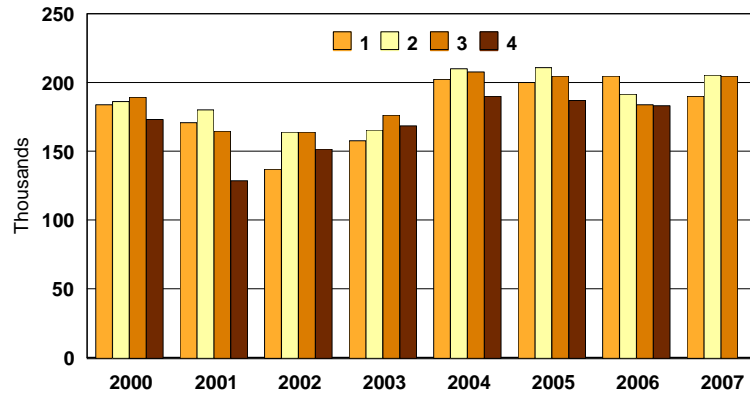
New York-Newark-Bridgeport, NY-NJ-CT-PA



Washington-Baltimore-N. Virginia, DC-MD-VA-WV

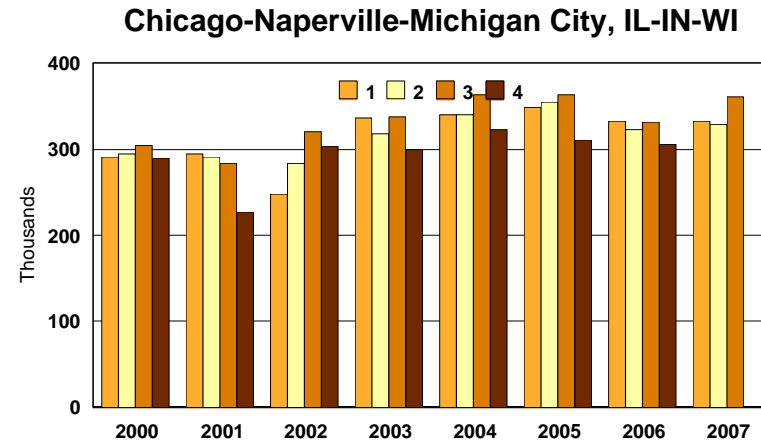
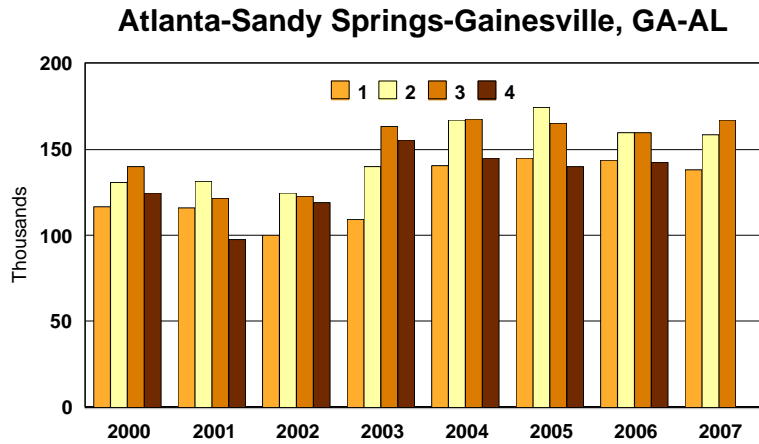


Boston-Worcester-Manchester, MA-RI-NH



Source: U.S. Dept. of Transportation Origin and Destination Survey

South and Midwest Metro Origins to California Destinations Visitors by Year and Quarter

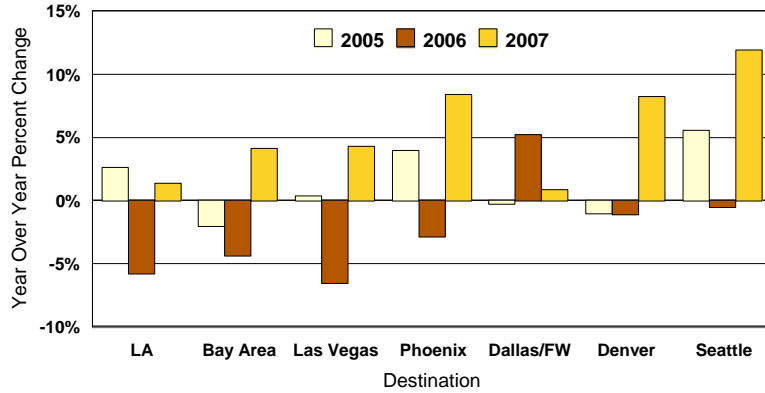


Source: U.S. Dept. of Transportation Origin and Destination Survey

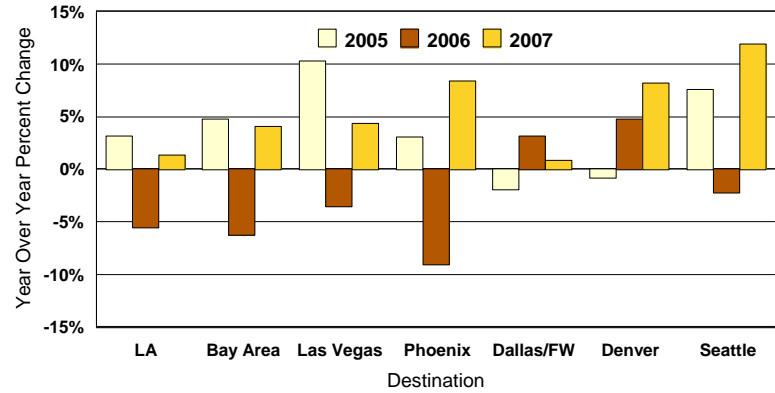
Competitive Analysis of Selected Metro Origins & Destinations

Year over Year Percent Change

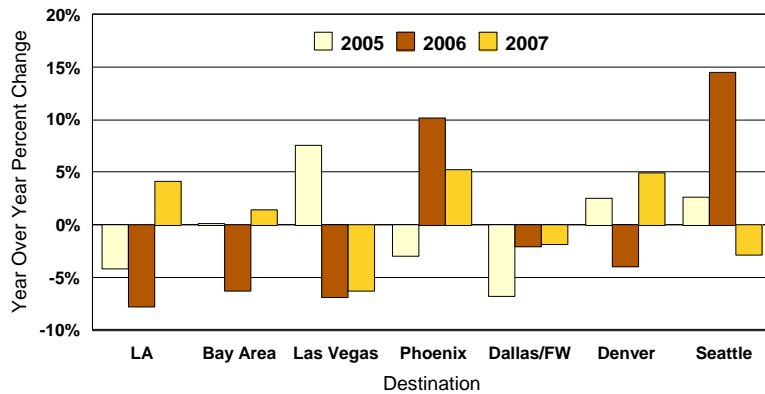
New York-Newark-Bridgeport, NY-NJ-CT-PA



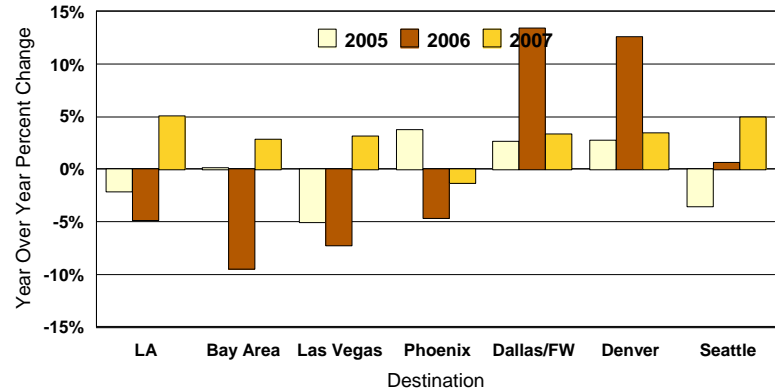
Washington-Baltimore-N. Virginia, DC-MD-VA-WV



Boston-Worcester-Manchester, MA-RI-NH



Chicago-Naperville-Michigan City, IL-IN-WI

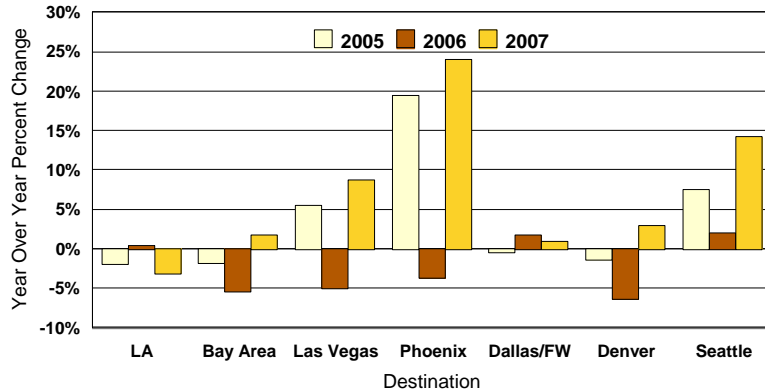


Source: U.S. Dept. of Transportation Origin and Destination Survey (2006-2007 Percent Change calculated with Jan.-Sept. data).

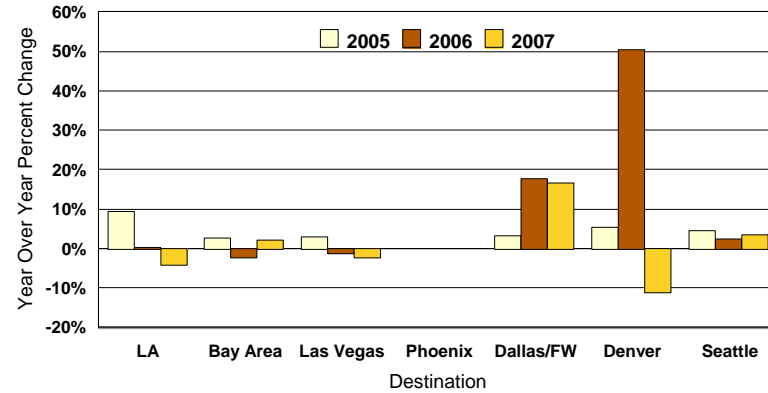
Competitive Analysis of Selected Metro Origins & Destinations

Year over Year Percent Change

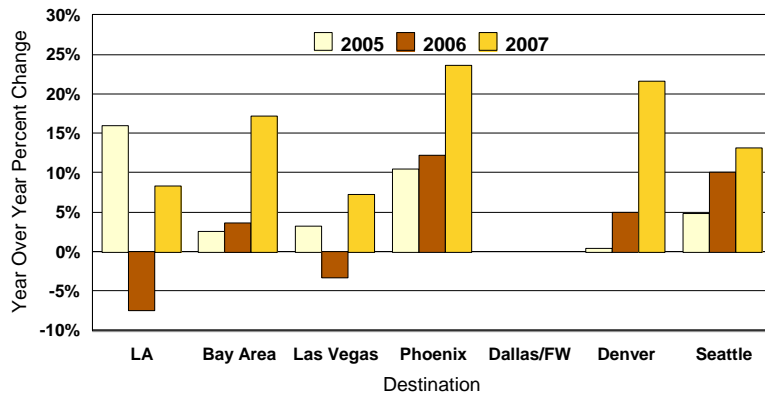
Atlanta-Sandy Springs-Gainesville, GA-AL



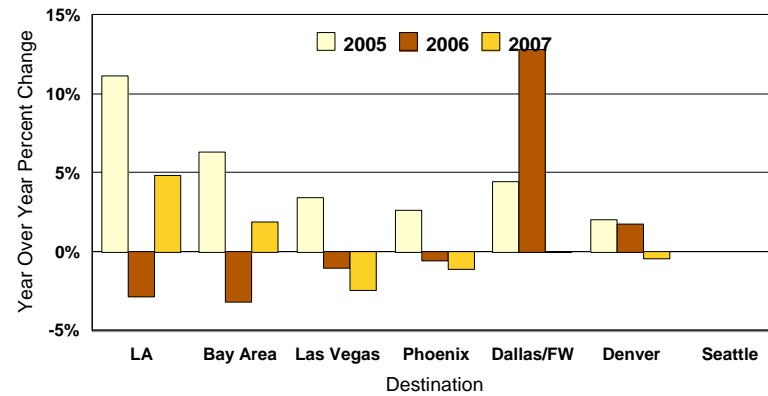
Phoenix-Mesa-Scottsdale, AZ



Dallas-Fort Worth, TX



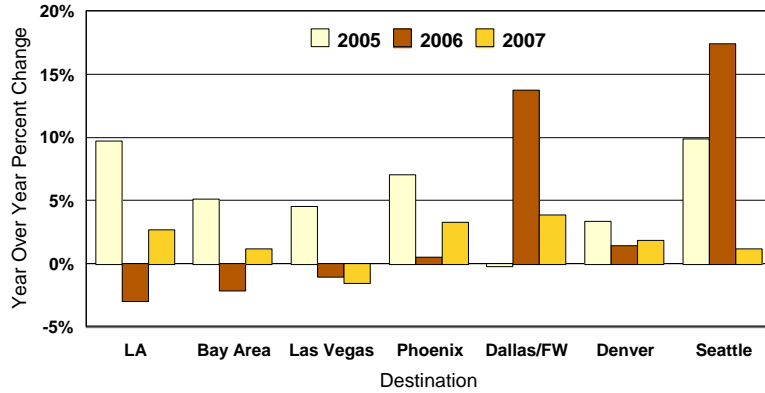
Seattle-Tacoma-Olympia, WA



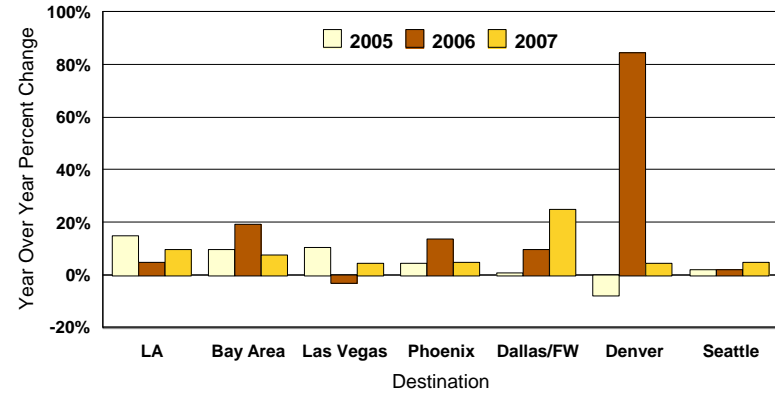
Source: U.S. Dept. of Transportation Origin and Destination Survey (2006-2007 Percent Change calculated with Jan.-Sept. data)..

Competitive Analysis of Selected Metro Origins & Destinations Year over Year Percent Change

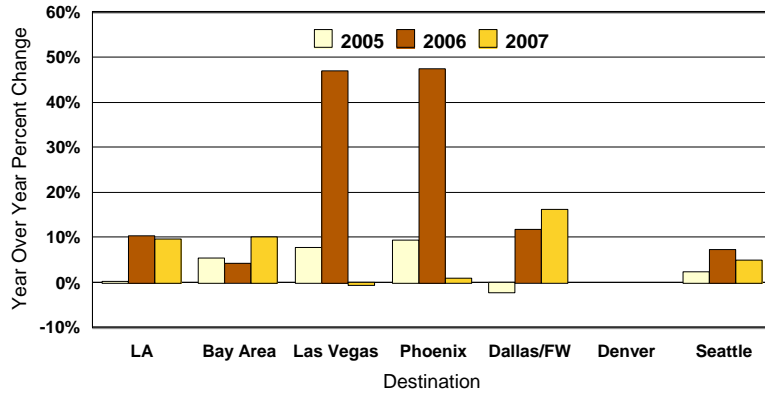
Portland-Vancouver-Beaverton, OR-WA



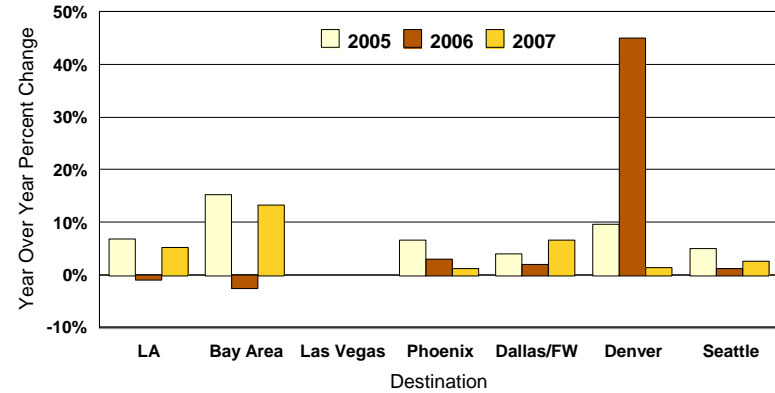
Salt Lake City-Ogden-Clearfield, UT



Denver-Aurora-Boulder, CO



Las Vegas-Paradise-Pahrump, NV



Source: U.S. Dept. of Transportation Origin and Destination Survey (2006-2007 Percent Change calculated with Jan.-Sept. data).