

# DARTFORD LIVING

*The Independent Community Magazine and Directory Serving Dartford*

Issue 29

**OCTOBER 2008**

- WIN - Orchard Theatre Tickets  
- Page 22



- Ellenor Lions Hospices trek to the home of the Dalai Lama  
- Page 25



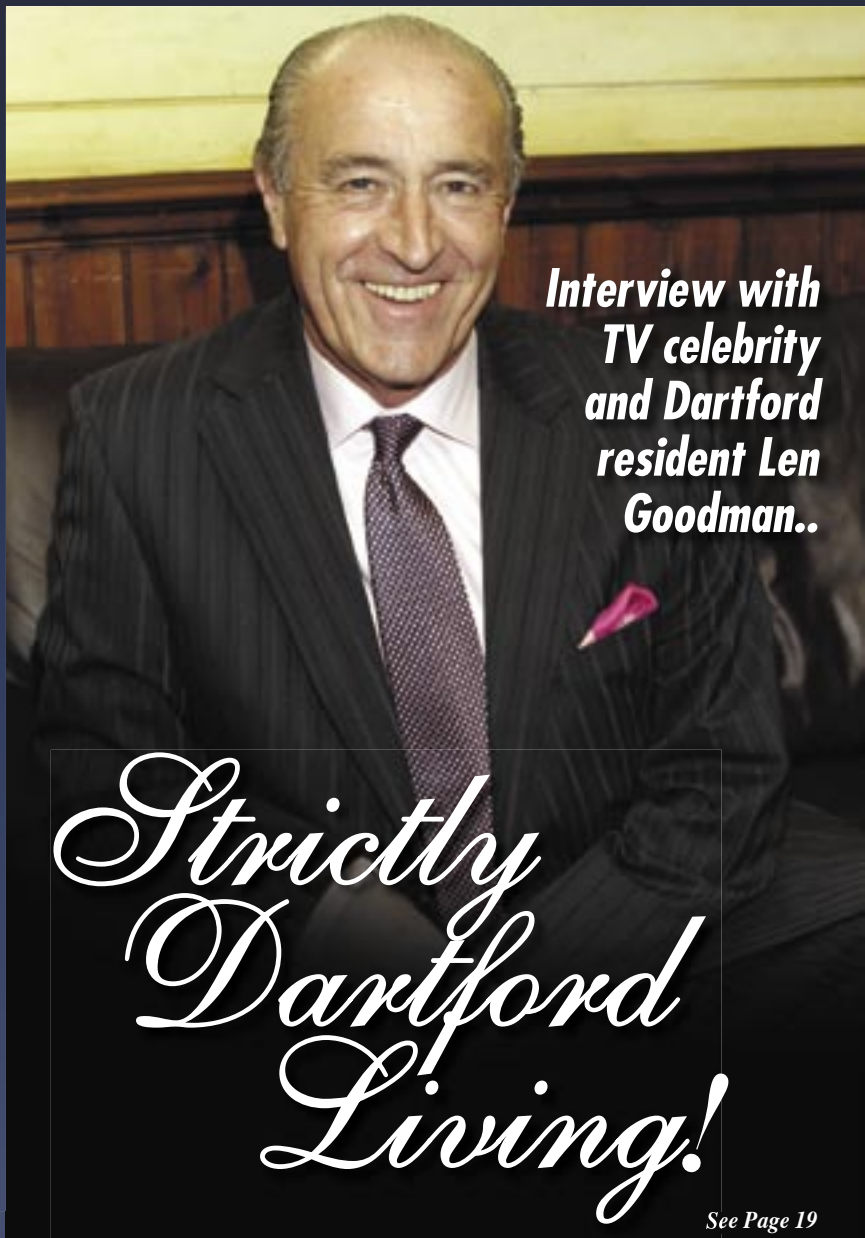
- In your garden this October  
- Page 8



**PLUS:**

All your regular features, events information, puzzles, restaurant review and much much more!

**NEW LOOK!**  
Previously  
DAI Living



**Interview with  
TV celebrity  
and Dartford  
resident Len  
Goodman..**

*Strictly  
Dartford  
Living!*

See Page 19

*Delivered FREE each month to homes and businesses in Dartford  
Over 6,000 copies distributed this month*

# AES

Advance Electrical Solutions Ltd.

- Breakdowns & faults
- Extra lights and power points
- Gardens, ponds, flood and security lighting
- Fuse board replacements
- Shower, cooker and heating circuits
- Full rewires
- Extra telephones
- Fan installations
- Computer network points

....Just ask!

ALL WORKS INSTALLED, INSPECTED  
AND TESTED BY FULLY QUALIFIED  
AND INSURED ENGINEER

## Electricians

For all your domestic  
electrical requirements...



TEL: 01322 221 737

MOBILE: 07751 838 549

EMAIL: AESOLUTIONSLTD@GMAIL.COM

24 Hr Breakdown Service

# DYNES

Autumn Extravaganza Repair Specialist

WITH EVERY FULL SERVICE - RECEIVE A FREE MOT -  
OR AIR CON REGAS FOR ONLY £25 INCLUDING VAT

Class 4  
MOT's  
£35\*

Aircon  
Re-gas  
£55\*  
inc VAT

Interim Service  
with MOT  
£95\*  
inc VAT

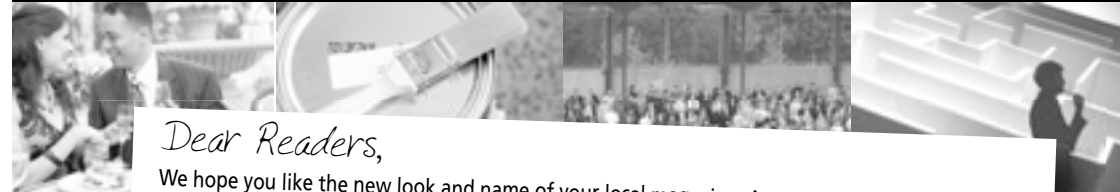
\* ON PRODUCTION OF THIS ADVERT

Unit 3, Crayside Ind. Estate, Thames Road, Crayford, Kent DA1 4RF

01322621430 Freephone 0800 2118860

# DARTFORD LIVING

The Independent Community Magazine and Directory Serving Dartford



Dear Readers,

We hope you like the new look and name of your local magazine. As you can see, we have changed the name to Dartford Living (from DA1 Living) as we now deliver to a wider area, that doesn't just include the DA1 postal code area. Apart from Kelly's fabulous interview with Len Goodman on page 19, Sam has given the magazine a completely new look. The nights may be drawing in but on a wet October evening, you can now be entertained by the new look Dartford Living! Please feel free to let us know what you think!

The October edition not only includes our special interview, but is again full of lots of interesting articles including, gardening, sports, charity events, cars, and DOADs information. There is another Orchard Theatre competition, children's puzzles, Sudoku and the usual tricky prize crossword! There is also the new look 'Where to Go Locally' section with lots of ideas for local activities to keep you busy! For a full index turn to page 4.

If you run a local business and would like to discuss advertising, or own a restaurant and would like to feature in our new Restaurant Review, please contact us.

You can also find more details, including our full rates, on our website [www.dartfordliving.com](http://www.dartfordliving.com). Sam will also be on hand to help design adverts for our advertisers. The website includes a monthly uploaded electronic version of Dartford Living, so when you advertise in the paper copy of Dartford Living Magazine your advert is also seen online on our website and via search engines!

Please remember to mention Dartford Living when you contact our excellent advertisers featured in the magazine. Feel free to continue to get in touch if you would like to write an article for the magazine. Don't forget that Dartford Living is your magazine, the only independent community magazine serving Dartford!

Until next time, Vijay (and the rest of your Dartford Living team - Sam, Daniel and Kelly)

P.S. We have delivered to over 6,000 homes and businesses in Dartford and surrounding areas (previously 5,000), however if you don't receive a copy directly through your door, you can pick up a copy from various drop off points across the local area including Dartford Football Club, various local libraries, Fairfield Pool, Next Generation Gym, Goals Soccer Centre and various Health Centres/GP surgeries! There will also be plenty of copies at the Charity Race night held at the Foresters Pub located in Great Queen Street on 11th October, Dartford Living are sponsoring a horse named Paper Chase.

For any information, please contact us at:

Dartford Living, PO Box 283, Dartford Kent DA1 9BW Office: 01322 507817

Advertising & Editorial - Contact Vijay: [editor@dartfordliving.com](mailto:editor@dartfordliving.com)

Sales & Design - Contact Sam: [sales@dartfordliving.com](mailto:sales@dartfordliving.com)

Website: [www.dartfordliving.com](http://www.dartfordliving.com)

Dartford Living, and it's owners cannot be held responsible for any errors, omissions or claims made by advertisers or endorse companies, products or services that appear in any Dartford Living publication.

# Index of Advertisers and Information

Your quick guide to everyone and everything in your Dartford Living Magazine

## ADVERTISERS

### Builders & Decorators

|                             |    |
|-----------------------------|----|
| 4k Building Services.....   | 31 |
| A Baines & Son Roofing..... | 28 |
| Claremont Decorators.....   | 29 |
| Craig Baker.....            | 29 |
| Fink Building Services..... | 18 |
| Odd-Jobs.....               | 10 |
| P Clark.....                | 26 |
| T & A Builders.....         | 13 |

### Business Support

|                          |    |
|--------------------------|----|
| Thames Gateway           |    |
| Chamber Of Commerce..... | 26 |

### Car Showrooms

|                                 |    |
|---------------------------------|----|
| Bourne Road Garage - Mazda..... | 32 |
|---------------------------------|----|

### Children's Wear

|                |    |
|----------------|----|
| Datshoppe..... | 17 |
|----------------|----|

### Cleaning Services

|                        |    |
|------------------------|----|
| All Clean & Tidy.....  | 5  |
| Cleaning Doctor.....   | 13 |
| Cleaners Required..... | 25 |

### Education

|                   |    |
|-------------------|----|
| Kip McGrath.....  | 17 |
| Kumon Centre..... | 17 |

### Electricians

|                       |   |
|-----------------------|---|
| AES Electricians..... | 2 |
|-----------------------|---|

### Financial

|                                       |    |
|---------------------------------------|----|
| John Folkard - Financial Advisor..... | 26 |
| Sterling & Law.....                   | 13 |

### Framing

|                   |    |
|-------------------|----|
| Craft Frames..... | 29 |
|-------------------|----|

### Function Rooms

|                        |    |
|------------------------|----|
| Springfield Lodge..... | 23 |
|------------------------|----|

### Garages & Vehicle Recovery

|                          |    |
|--------------------------|----|
| Dynes.....               | 2  |
| Shenley Road Garage..... | 15 |

### Graphic Design Services

|                                      |    |
|--------------------------------------|----|
| Sam Ingram - Freelance Designer..... | 31 |
|--------------------------------------|----|

### Health, Hair & Beauty

|                                       |    |
|---------------------------------------|----|
| Beauty by Sandra.....                 | 20 |
| Denise Braxton Mobile Hardresser..... | 5  |
| Weight Loss Academy.....              | 20 |

### Opticians

|                          |    |
|--------------------------|----|
| Linklater Opticians..... | 30 |
|--------------------------|----|

### Pets & Garden

|                            |   |
|----------------------------|---|
| Pet & Garden Supplies..... | 9 |
|----------------------------|---|

### Photography

|                 |    |
|-----------------|----|
| Photo Diva..... | 25 |
|-----------------|----|

### Public Houses

|                  |    |
|------------------|----|
| Foresters.....   | 12 |
| Malt Shovel..... | 18 |

### Removals

|                    |    |
|--------------------|----|
| F.D Transport..... | 10 |
|--------------------|----|

### Tyres

|                    |    |
|--------------------|----|
| Shenley Tyres..... | 20 |
|--------------------|----|

### Woodwork

|                        |    |
|------------------------|----|
| Charles Carpentry..... | 28 |
|------------------------|----|

### Van Services

|                |   |
|----------------|---|
| Man & Van..... | 5 |
|----------------|---|

## ARTICLES &

### LOCAL INFORMATION

|  |       |
|--|-------|
| Around the World in 80 Words.....                  | 11    |
| Automotive News.....                               | 21    |
| Contact Dartford Living.....                       | 3     |
| Crossword.....                                     | 24    |
| Crossword & Sudoku Solution.....                   | 30    |
| Dartford Amateur Operatic<br>Dramatic Society..... | 12    |
| Dartford F.C.....                                  | 31    |
| Editor's Letter.....                               | 3     |
| Ellenor Lions Hospice                              |       |
| Dalai Lama Trek.....                               | 25    |
| In Your Garden Now.....                            | 8     |
| Len Gooman Interview.....                          | 19    |
| Orchard Theatre Competition.....                   | 22    |
| Puzzle Cellar.....                                 | 16    |
| Restaurant Review.....                             | 14    |
| Sporting Comment.....                              | 27    |
| Sudoku.....  | 28    |
| Useful Numbers.....                                | 11    |
| Where To Go Locally.....                           | 6 & 7 |

**Did you know  
Dartford Living  
also deliver  
leaflets?**

We can deliver your  
company's leaflets with  
this magazine for only  
£50 per 1000.

**Tel: 01322 507817**  
**info@dartfordliving.com**

# All Clean & Tidy



**Housework getting you down?  
Not enough hours in the day?**

Then let All Clean & Tidy domestic cleaning  
services take the strain of your housework.



• ONE OFF'S • WEEKLY • BI WEEKLY • MONTHLY

**NO JOB TOO BIG OR SMALL!**

*We at Clean & Tidy will tackle them all.*



FOR A FREE NO OBLIGATION QUOTE PLEASE PHONE

**01322 523690 or 0774 7775663**



## MAN & VAN

- HOUSE / FLAT REMOVALS
- RUBBISH CLEARANCE
- WASTE LICENCE CARRIER
- FREE ESTIMATES

**Daytime: 07966 421705**

**Evening: 01474 853175**

## Just Perfect

Denise Braxton - Mobile Hair & Make-up Artist

Allow us to create the ultimate makeover for your  
"special day" in the comfort of your own home

### Price List

|                                       |         |
|---------------------------------------|---------|
| Cut, Blow-Dry & Finish                | £20     |
| Foils, Cut, Blow-Dry & Finish         | £45-£65 |
| Colour, Cut, Blow-Dry & Finish        | £45     |
| Colour, Cut, Blow-Dry, Finish (Roots) | £35     |
| Perm, Cut, Blow-Dry & Finish          | £50     |

### Wedding Services

|                                   |          |
|-----------------------------------|----------|
| Trial Hair & Make-up              | £50      |
| Trial Hair                        | £30      |
| Trial Make-up                     | £25      |
| Bridal Hair & Make-up             | £70      |
| Bridal Hair                       | £50      |
| Bridal Make-up                    | £30      |
| Adult Bridesmaids' Hair           | £30      |
| Adult Bridesmaids' Hair & Make-up | £50      |
| Child Bridesmaids' Hair           | from £15 |
| Blow Dry, Finish & Make-up        | £35      |



Revlon trained. All enquiries welcome.  
Please call Denise on

**Tel: 0208 303 0970 Mob: 07903 686352**

email: denisebraxton@hotmail.co.uk



## Parent & Toddler Groups (Term Time)



### Mondays

1:15pm - 2:30pm. Brent Methodist Church, St Vincents Road, Dartford.  
1:15pm - 2:45pm. Christchurch, Crossroad, Dartford. Contact Yvonne on 01322 220693.

### Mondays and Wednesdays

9:30am - 11:30am. Amar Hall, bottom of East Hill, Dartford. Contact Julie on 01322 291092.

### Tuesdays

Little Fishes: 12 - 2pm, Emmanuel Church, East Hill, Dartford. £2 per family including all snacks and drinks.  
Call Karen Ruby on 01322 272649.

### Wednesdays

1pm-2:30pm. Lutonia Hall, Broomhill Road, DA1, contact Lynne on 01322 229637.  
\*\*\*NEW\*\*\* **SPRINGFIELD LODGE DAY NURSERY SWANSCOMBE 10-11.30am - Fun Playtime sessions, 0 - 3 years, a chance to meet other families and make new friends, no need to book, just turn up! TEL: 01322 389181.**

### Thursdays

9:45 - 11:30am. The Vineyard Centre, 24 Market St, Dartford. Contact Suzanne on 07896 489803 or [suzanne@createdin6.co.uk](mailto:suzanne@createdin6.co.uk)  
9:30 - 11:30am. St Paulinus Church Hall, Manor Road, Crayford.  
9:45 - 11:30am. The Meeting Hall, Broomhill Road, Dartford. £1 per family. Contact 01322 277661.  
\*\*\*NEW\*\*\* **SPRINGFIELD LODGE DAY NURSERY DARTFORD 10-11.30am - Fun Playtime sessions, 0 - 3 years, a chance to meet other families and make new friends, no need to book, just turn up! TEL: 01322 228154**



### Fridays

9:00 - 11:00am. St Alban's Church, St Albans Road, Dartford.  
Contact Juli on 07766 650 221.

## Toddler Music & Rhyme Sessions



Tuesdays, 2 sessions, from 9.30-10.30am and 10:45 - 11:45am in Fleetdown FC Hall; Heath Lane, Dartford. Contact Judi: 07970 730736.

Thursday mornings (term time) at Crayford Library at 9.50am and 11.00 am (2 sessions). Crayford Road, Crayford, DA1 4ER. Tel: 020 8303 7777.

Monday 10:30am - 11:00am & Friday 2:15pm - 2:45pm at Dartford Library - Baby Bounce & Rhyme Time

## Dartford Central Townswomen's Guild

They meet on 2nd Tuesday of each month at Christchurch Hall, Christchurch Road, Dartford, 2.15pm - 4.00pm.  
Visitors and new members very welcome.  
Call 01322 271181.

## North West Kent Family History Society - Dartford Branch

The Dartford Branch meet at the Technology College, Heath Lane, For more information see [www.nwkhfs.org.uk](http://www.nwkhfs.org.uk)

## Dartford Women's Institute

2nd Tuesday of every month,  
Dartford Girls' Grammar School, 7:30pm. Contact Judith on 01322 278 703.

## Dartford Floral Club

Demonstrations held the 3rd Friday of every month, 7:30pm in the Hawley Pavilion (opposite Papermaker's Arms), Hawley road, Hawley, Dartford. Contact Norma on 01322 402504. The entry fee for a lovely evening of beautiful flowers is £4.50.

## Dartford Ladies

### Probus Group

They meet 4th Wednesday of each month, 12.15pm - 3.00pm, at Hubert House, Mallard Close, Temple Hill. Lunch and guest speakers. For further information telephone Iris: 01474 703448.

## Dartford Beekeepers

Meeting on Wed evenings from 12th Nov for people interested in Beekeeping. Initial meeting Sat 25th Oct. Contact 01322 225887 or [willmumby8@tiscali.co.uk](mailto:willmumby8@tiscali.co.uk) for information.

**Cards for Good Causes, the Charity Christmas Card Shop** has moved to Dartford Library next to Central Park and will be open from 30 October to 18 December from 10.00am to 4pm Monday to Saturday (1pm on Thursdays).

## Local Libraries



### Dartford Library Opening Hours:

Mon to Wed 8.30am - 6.00pm, Thurs 8.30am - 8.00pm,  
Fri 8.30am - 6.00pm, Sat 9.00am to 5.00pm

### Ashen Drive Library Opening Hours:

Mon 2.00pm - 6.00pm, Tue 9.00am - 1.00pm, Thurs 2.00pm - 6.00pm, Fri 9.00am - 1.00pm, Sat 10.00am - 2.00pm

### Temple Hill Library Opening Hours:

Mon, Tues, Thurs and Fri 9.00am - 6.00pm, closed Wed & open Sat 10.00am - 2.00pm

## Dartford Beaver Scouts 6-8 Yrs

Dartford has 16 beaver colonies meeting on weekday evenings or Saturday mornings. Contact Jackie Watson, District Beaver Leader, on 07946 342483 or [jackie.alphaquadrant@ntlworld.com](mailto:jackie.alphaquadrant@ntlworld.com)

## The Rotary Club of the North Downs

They meet at the Holiday Inn, Black Prince, Thursday evenings 7:30pm for 7:45pm for Dinner and fellowship. For details phone 07759 863836.

## Local Sports Clubs

### Bexley Rugby Club

01322 550142 or [www.bexleyrfc.co.uk](http://www.bexleyrfc.co.uk)

### Crackenford Ladies Hockey Club

June Morris - 01322 226686.

### Dartford Sharks Basketball Club

Tim Dickson - 07855 692527.

### Dartford Volleyball Club

Graham - 01322 275290 or 07984 106134.

### Stone Lodge Indoor Bowling Club

01322 274111.

### VCD Table Tennis Club

Eric Jenkins - 0208 3038312.

### Dartford Ju Jitsu Club

Mondays, Dartford Girls Grammar School, Shepherds Lane. 6.30-8.00 Juniors, 8.00-10.00 Seniors.  
1st session free [www.dartfordjujitsu.co.uk](http://www.dartfordjujitsu.co.uk)

# In your garden...

## What to do in your garden this October

Although September wasn't as expected weather-wise, let's hope you were able to take advantage of the good days to enjoy your garden. However, October has arrived so it's a good time for borders and containers to be tidied so that they are ready to plant your spring flowering subjects. A selection of flower and vegetable seeds can now be sown outside and inside, not forgetting to start general maintenance on the lawn.

### Vegetables

- Plant onion sets of over-wintering varieties from the middle of the month.
- Winter lettuce varieties can be sown.
- Main crop potatoes should be lifted and allowed to dry prior to storing in wooden trays in a dark, cool, frost-free shed or garage.
- Transplant spring cabbage into their final positions.
- Pot up plants of basil, marjoram, mint, oregano and parsley, growing them on the kitchen windowsill for a supply of herbs during the winter.
- Sweet corn can be harvested when the tassel turns brown by snapping off cobs just before eating.
- Marrows, pumpkins and squashes can be cut then ripened in the sun in a warm, dry place and stored.
- Crops should be picked regularly ensuring they are always fresh and tender. Items such as courgettes and beans shouldn't be left too long prior picking.

### Flowers

- Sow wildflowers such as field scabious, field cornflower and feverfew as these varieties can be sown direct outdoors.
- Seed of wild flower varieties primrose and cowslip may be sown in a cold frame.
- In the greenhouse sow cyclamen, pelargonium, schizanthus and streptocarpus.
- Sweet Peas can be sown in a cold frame or unheated greenhouse to over-winter, so that young plants are ready for planting out in March/April to obtain early blooms.
- Hardy annuals such as calendula, cheiranthus, godetia, larkspur, nigella and poppy can be sown outdoors.

- Spring flowering plants such as bellis (daisy), pansy, polyanthus, primrose and wallflower, along with spring flowering bulbs, can be planted.
- To prevent the growth of grey mould on blooms of dahlias for example regular deadheading is required.
- Cuttings of tender plants, such as coleus, pelargoniums and gazanias, that you wish to over-winter should be taken.
- When blooms have faded a last deadheading of roses can be done, and tall stems may be slightly shortened so that movement from wind is reduced.
- Stem cuttings from roses can be taken during the early part of this month - cut a length of stem, remove the soft tip above a leaf joint, cutting below a joint at the base removing all but the top three leaves. Place directly into the soil approximately 30cm (12") to about half its length somewhere in the garden where they can remain to root and develop for about a year.
- For early fragrant freesia blooms next spring plant corms now.

### Lawn care

- Now is an ideal time to sow new lawns or make repairs to existing lawns.
- Grass growth is slowing, therefore, reduce the frequency of mowing.
- Keep the lawn clear of fallen leaves.
- General maintenance should be carried out to established lawns, aerate by spiking with an aerator or fork, apply a top dressing and towards the end of the month apply an autumn fertiliser.
- Grass growing against walls, fences or along path edges should be trimmed.

Text used with permission from Dobies - [www.dobies.co.uk](http://www.dobies.co.uk)

## PET & GARDEN SUPPLIES

148 Colney Road, Dartford  
Tel & Fax: 01322 226330

Email: [petandgardendartford@unicombox.co.uk](mailto:petandgardendartford@unicombox.co.uk)  
[www.petandgardensuppliesdartford.co.uk](http://www.petandgardensuppliesdartford.co.uk)

### STOCKISTS OF:

- Burns/Hills
- Arden Grange
- Royal Canin
- James Wellbeloved
- Iams/Eukanuba
- Nutro Choice
- Almo Nature

*All other makes of food supplied to order*

**Extensive  
Range of  
Accessories**

**FREE  
LOCAL  
DELIVERY**

**FREE DOG & CAT  
FOOD SAMPLES**

### OPENING TIMES:

**Monday – Saturday 9.00am – 5.00pm  
Wednesday 9.00am – 1.00pm**



# ODD-JOBS

C.PATERSON & SONS

C.I.S REGISTERED. PUBLIC LIABILITY INSURED



DRIVES PATHS & PATIOS LAID (BLOCK PAVING, CONCRETE & SLABS)  
 BRICKWORK  
 FENCING  
 SHED REPAIRS & BASES LAID  
 GUTTERING & GUTTER CLEANING  
 UPVC FACIA & SOFFITS  
 CARPENTRY  
 DOOR HANGING  
 DECKING  
 CARPET FITTING  
 PLASTERING  
 FLAT PACK FURNITURE (KITCHEN & BEDROOMS)  
 LAMINATE FLOORING  
 MANY OTHER JOBS UNDER TAKEN

PHONE FOR A FREE QUOTE

HOME 01322 521641

MOBILE 07715 719703

13 FERNDILL AVE, JOYDENS WOOD, BEXLEY, KENT, DA5 2ED

## DARTFORD LIVING

**Did you know  
 Dartford Living  
 also deliver  
 leaflets?**

We can deliver your company's  
 leaflets with this magazine  
 for only £50 per 1000.

**Tel: 01322 507817**  
**info@dartfordliving.com**



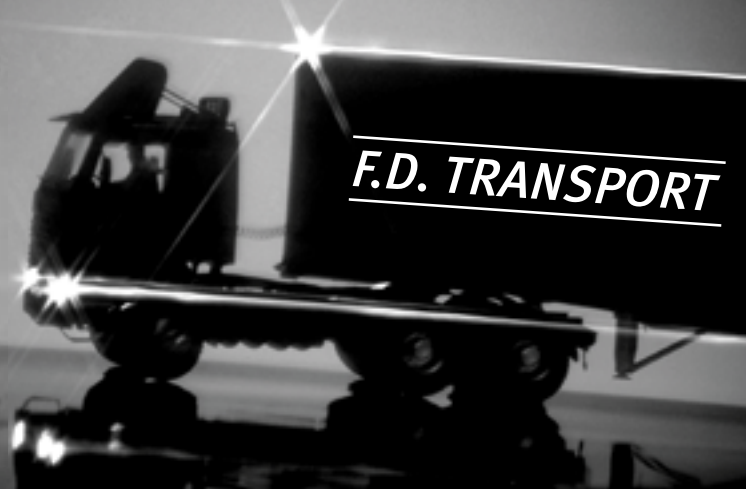
**Each month Abdel looks at a different part  
 of the world and writes exactly 80 words.  
 This month he writes about... Paris!**

PARIS. Easily accessible from Kent and offers plenty! From sightseeing at the Champs Elysee, Tour Eiffel and Notre Dame to art galleries and museums with famous works. Shoppers can head for the markets or trendy Avenue Montaigne or relax at one of the many cafés. Paris' architecture can be taken in with a cruise along the Seine. Being a flat city it's ideal for walking. Whatever your tastes, Paris will live in the memory and have you coming back for more!

# F.D. TRANSPORT

"FULWICH VILLA" 100 FULWICH ROAD, DARTFORD KENT  
 TEL: 01322 292323 MOBILE: 07831 448552

- FREE ESTIMATES
- ALL REMOVALS UNDERTAKEN
- ALL GOODS FULLY INSURED
- HAULAGE, PARCEL SERVICE, SINGLE ITEMS



## Useful Numbers

- Citizens Advice Bureau - 01322 224686
- Crimestoppers - 0800 555111
- Darent Valley Hospital - 01322 428100
- Dartford Police Station (non urgent crime) - 01474 369055
- Gatwick Airport Enquiries - 08700 002468
- Heathrow Airport Enquiries - 08700 000123
- Information About Drugs - FRANK - 0800 776600
- Local Breastfeeding Counsellors Judianne/Paula - 01322 287380/272490
- National Rail Enquiries - 08457 484950
- NHS Direct - 0845 4647
- NSPCC Child Protection Helpline - 0808 800 5000
- RSPCA Kent - North West Branch - 01474 328515
- Thames Water Leak Line - 0800 714614
- West Kent NHS Helpline - 0800 0 850850

# DAODS

Dartford Amateur Operatic Dramatic Society

The Dartford Amateur Operatic Dramatic Society are presenting their next show 'Jekyll and Hyde' at the Orchard Theatre on 22nd - 25th October. I was invited along to one of their rehearsals for a sneak preview of the leading characters. David Kerry, the silly-ass in 'Anything Goes' back in April, plays the dual role of Jekyll and Hyde. Laura Gillham plays Jekyll's fiancé Emma Carew, coincidentally she played David's fiancé in 'Anything Goes', and Michelle Wright plays the prostitute Lucy Harris that attracts the attentions of both Jekyll and Hyde. The show has been described as 'The Phantom of the Opera' meets 'Oliver'. It contains a large number of principal roles for the society to tackle. Although the story is a work of fiction, this production is firmly grounded in a sense of reality. The show is directed by David Maun, whose very own contagious enthusiasm for the entire piece will ensure that the show is a success. David's last production was the amateur premiere of 'The Witches of Eastwick' in October 2006.

David Kerry faces, literally, a challenging task of two roles. To avoid losing the audience during the play David will be using colours to differentiate between the two men. Dr Jekyll and his fiancé Emma wear the colour purple and Mr Hyde and Lucy



wear the colour red. Lighting using the same colours are used during to light each side of his face during one song where David has to sing each line alternately as the two characters. Consisting of about 30 songs the journey will be filled with some of the most haunting and atmospheric music ever written for theatre.

**Tickets are from £13.00 and are available from the Box Office on 01322 220000.**

## STERLING & LAW

INDEPENDENT FINANCIAL CONSULTANTS

### ARE PERSONAL PENSIONS BACK IN VOGUE?

Financial advisers often come across the phrase "My property is my pension" when dealing with clients. Clients would expect to downsize in retirement using the equity released to invest for an income.

Not a bad idea if you can make it work.

However, recent events have thrown a spanner into the works and personal pensions are back in vogue.

**You save a regular amount in a tax efficient investment vehicle aiming to build a fund for your retirement. More predictable than property? Maybe.**

For more information on pensions, contact:

Paul Tabi - Independent Financial Consultant  
St James Office, No. 1 Harley St, London W1N 1DA

Tel: 01322 279164 Mobile: 07956 203518

Email: paul@sterlingandlaw.com

[www.sterlingandlaw.com](http://www.sterlingandlaw.com)

Individual and Corporate:-

• Financial Planning • Insurance • Mortgages • Savings • Investments



**NO JOB TOO SMALL!**

**Tiling, Kitchens,  
Bathrooms and  
Plumbing**

**PLEASE CALL TONY ON**

**01322 278032**

**OR 07779 249911**

**Paul & Chris Baker welcome you and your family to -  
The Foresters, 15 Great Queen St, Dartford DA1 1TJ**

Patio Garden

Car Park

Real Ales

SKY & Setanta



Cribbage Teams

New Pool Table

Darts Teams

Quiz nights

**Forthcoming events:**

- ◆ 11th Oct - Race Night - 'buy' your own horse and cheer it on
- ◆ Fri 31st Oct - Children's Halloween fun from 5pm
- ◆ Sat 8th Nov - Cancer Research Celebration and cheque Presentation night

**Phone 01322 223087 for details and bookings**



**BEST EVER™ Carpet, Curtain & Upholstery Cleaning With A 100% Risk-Free GUARENTEE!**

Look... It's Dry Already and He Only Left 30 Minutes Ago!



"Hello, I'm John Lineham, Cleaning Doctor. I am dedicated to giving you the Best Ever carpet, curtain and upholstery cleaning and protection, all at sensible prices and backed up with my 100% Risk-Free Guarantee on every job."

- Carpets Dry, Stain Protected and Ready-to-walk-on in 30 Minutes with my DRY FUSION™ quick drying system.
- Spot, Stain, Odour, Chewing Gum and Dust Mite Removal.
- Upholstery Cleaning & Protection, including Leather.
- Curtains Cleaned On Site - No need to take them down.
- 100% Risk-Free Guaranteed Service On Every Job.

**John Lineham**

**Cleaning Doctor®**

Carpet, Curtain & Upholstery Services  
Domestic and Commercial - DARTFORD & N.W. KENT  
[www.cleaningdoctor.co.uk](http://www.cleaningdoctor.co.uk)

DISCOUNT VOUCHER: Mention this advert and get £20 Off Stain Protection on any carpet or fabric that I clean for you. (Minimum invoice value £60)

**Tel: (01322) 290 600 FREE: 0800 695 0150**

Dartford Living's Vijay and Sam visit...

## The Malt Shovel

"A Kent Country Pub in the Heart of Dartford"

**Friends had been asking me if I had visited the Malt Shovel since Neil and Ann took over in January 2008 and I thought it was time to find out, so Sam and I decided to take a look!**

The first thing that made us warm to the Malt Shovel on our visit was the welcome we received from Neil and Ann. Neil told us a little about the history of the Malt Shovel, including the fact that it is one of Dartford's oldest buildings. In fact the haunted Tap Room of the pub can be dated back from 1673!

I was impressed by the small touches at the Malt Shovel. They use the local Hill Top Bakery and the local butchers on Colney Road. They also like to use seasonal Kent vegetables. None of that supermarket muck!

We visited on a cold Thursday in September and decided to both start with cheesy garlic bread. Other starters include chips, onion rings and salads. Main courses include Barbeque Chicken Melt, Fillet of Salmon, Sirloin Steak and both Beef and Vegetable Lasagne. Sam chose the Barbeque Chicken Melt, which was a chicken breast topped with bacon, BBQ sauce and grilled cheddar cheese. Sam chose for it to be served with chips but there were other healthier options including a jacket potato, rice and salad! I chose the baked Salmon Fillet marinated in lemon and dill.

Sam and I were too stuffed for a pudding but there were plenty of tasty desserts on the menu including Lemon Torte, Strawberry Cheesecake Apple Crumble and Chocolate Pudding, as well as Cheese and Biscuits.

Bob the Chef not only brings his 20 years of

experience to the Malt Shovel, but he also brings his passion for using seasonal local produce and good quality meat. Neil has already seen the Sunday roast becoming locally renowned!

If you are a real ale drinker, there is a great selection, however Sam stuck to the cider and I was drinking JD and coke! Our meals were also accompanied by a very nice glass of rosé.

Sam and I plan to return soon with our families for some of the fun events that are planned. Make sure you put these dates in your diaries:

**31st October - Halloween Fancy Dress**  
**1st November - Children's Halloween Night**  
**5th November - Bonfire BBQ**

I was impressed with a little idea that the Malt Shovel has come up with to save us a bit of time in the busy lives we all lead. You can ring up before you plan to visit for lunch or dinner and pre-order your meal. So when you arrive it is piping hot and ready to eat without the wait! Great if you only have a short lunch break or starving after a hard day at work!

There is also a pleasant beer garden which is a friendly and relaxed environment to bring your family. However, if it's a juke box and fruit machines that you are after then perhaps the Malt Shovel isn't the pub for you. It's the sort of place you could bring anyone from your partner, mum, gran or bunch of mates and have a great time.

I have to say that the Malt Shovel satisfies the criteria of being a fabulous Kent Country Pub in the Heart of Dartford! Why not pop in and see what you think?

**For more information, call Neil or Ann**  
**01322 224381 or see the advert on page 18.**



# Shenley Road Garage

## 01322 229887

# SAME DAY MOT'S

(Booking not always necessary)

- Tyres • Exhausts
- Clutches
- Timing Belt
- Changes • Petrol & Diesel Cars & Vans Welcome

the Good Garage Scheme

Garages you can trust. Be assured that every garage listed performs services to a strict standard and will always have your best interests at heart.

We have a wide range of cars for sale on our website:

## www.shenleygarage.co.uk

**SHENLEY ROAD GARAGE OFFER THE FOLLOWING SERVICE PACKAGES:**

**BRONZE** Oil & filter change, levels checked

**SILVER** Oil & filter change, levels checked, general inspection, front brake inspection, oil & fuel treatments

**GOLD** Oil & filter change, spark plugs, air filter, levels checked, general inspection, front & rear brake inspection, exhaust emissions, oil & fuel treatments



# THE Puzzle Cellar

USE THREE OF THE LETTERS FROM THE WORD 'PURPLE' TO COMPLETE THE THREE WORDS ON THE PILES OF BLOCKS. THE REMAINING THREE LETTERS WILL SPELL A WORD.

**INSECTS**  
I CRAWL & CREEPS

P  
U  
R  
P  
L  
E

?  
U  
L  
E

?  
A  
Z  
Y

?  
V  
E  
N

**PET BIRDS**  
IVOR McCAW

**THE COW HERD**  
Only two of these eight cows are exactly the same. Which two?

© 2007  
www.puzzlecellar.com

ANSWER: COWS 2 AND 5 ARE IDENTICAL.  
3-LETTER WORD - FUR



Realise  
your child's  
potential

## Maths and English After-School Programmes

Kumon can help your child progress with their maths and English studies, boost their confidence and help them shine.

Contact your local Instructor today.

Alison Harper  
DARTFORD study centre

01732 760 231 **KUMON**  
kumon.co.uk Every child can shine

## DATSHOPPE

We sell discount kids Hannah Montana, High School Musical, Mickey Mouse, Spongebob, Power rangers, Baby Products, Swim wear, Dora, e.t.c

**FREE GIFT WITH EVERY PURCHASE!**



EMAIL: [sales@datshoppe.co.uk](mailto:sales@datshoppe.co.uk)

TEL: 07859 781411

WEB: [www.datshoppe.com](http://www.datshoppe.com)



Need help with school work?  
Concerned about progress?  
Preparing for an exam?

**We can help.**

Professional, affordable  
after-school tuition for  
6 - 16 year olds, by qualified,  
experienced teachers.



105 Brent Lane  
Dartford  
DA1 1QT

For friendly advice,  
and to book a **FREE**  
assessment, please  
call Jean or Andy on  
**01322 285685**



✓ Reading ✓ English  
✓ Spelling ✓ Maths

**Give your child a brighter future**



# The Malt Shovel

A Kent Country Pub in the Heart of Dartford  
3 Darenth Road, Dartford, Kent DA1 1LP



**Restaurant - professionally trained chef using local produce**  
**-Kent seasonal vegetables, Meat** (Colney Road Butchers)  
**and Bread** (Hill Top Bakery, one of Dartford's last remaining independent bakers)  
**Family Friendly Atmosphere, Pre-order Lunches,**  
**Garden, Function Room Available for Family Functions**  
**and Corporate Events, Themed Evenings, Regular Live Music**

Come and try our  
**Sunday Dinners**  
served 12-5.30pm

**FOOD SERVED:**  
Mon to Sat 12 - 3pm  
Wed to Sat 5.30 - 9pm  
Sun lunch 12 - 5.30pm

**For bookings and enquiries: 01322 224381**



Fencing

Decking

Patio's

Landscaping

Turf Lawns

Trellising

Brickwork

Drives

Facias

Sofits

Guttering

Groundworks

Loft Insulation

**Fencing In North Kent**  
**finkbuilding@aol.com**

**F.I.N.K Building Services**

direct: **07862 276480** office: **01474 322715**  
**www.finkbuilding.co.uk**

## Interview with...

# LEN GOODMAN



Long time Dartford resident Len Goodman has run the popular dance school Goodmans' in Market Street for the last forty years. He appears on the massively popular television programme Strictly Come Dancing as Head Judge, and on its American equivalent Dancing With The Stars. He spoke to Dartford Living's Kelly Goldsworthy.

*Tell us about your dance school.*

I've had it around forty years now. In the 1970s and 80s, the Saturday Night Fever era we had discos for young people on a Saturdays which were very popular. I'm still heavily involved with the dance school. Whenever I am home I'm their all the time. It's my first love: teaching people to dance. It's marvellous; some of the people I taught now have careers in it.

*How did you get into dancing?*

I got into dance very late. I had a football injury, and the metatarsals in my foot were not healing. The Doctor suggested I take up dancing to help it heal. I was about 21 then, which is late to get into dancing, but that's the story of my life, my autobiography came out in September and is called Better Late Than Never.

I got into dancing at 21 and on to TV at 60! But although 21 was old to get into dancing I seemed to have a natural flair for it and was fortunate to team up with a particularly good partner called Cherry Kingston, whose Dad had dance schools in Erith and Dartford. He gave me lessons. So I had a top teacher concentrating a lot of effort on me. I never returned to football as I was worried about picking up another injury, so I hung up my football boots and put on my black patent shoes!

*How did you end up on Strictly Come Dancing?*

They interviewed lots of people for the judges role, and eventually asked the dancers if they had any ideas. Erin Boag suggested me. They interviewed me and I got the job. I'm not sure how I ended up Head Judge. The first I knew of it was when it was said on the show! Presumably it's because I'm the oldest.

With Dancing With the Stars they liked Bruno [Tonioli] but did not really want me, but they could not find anyone else! I got a call the week before it started asking me to come over!

*What do you think of the shows?*

I love it, they are marvellous shows. They have brought a lot of people to dance. All types of dance have now become popular. They are nice shows with no nastiness. The judges may be a bit harsh at times, but for the celebrities it's not what they do, it they get voted off they go back to their real jobs.

*Are you aware of the groups on websites like Facebook in your name, for example on Facebook there are several groups including 'Len Goodman Appreciation Society' and 'Len Goodman for BBC Sports Personality of the Year'?*

I've heard, but I have never looked. Maybe I will now!

*What do you think is the best thing about Dartford?*

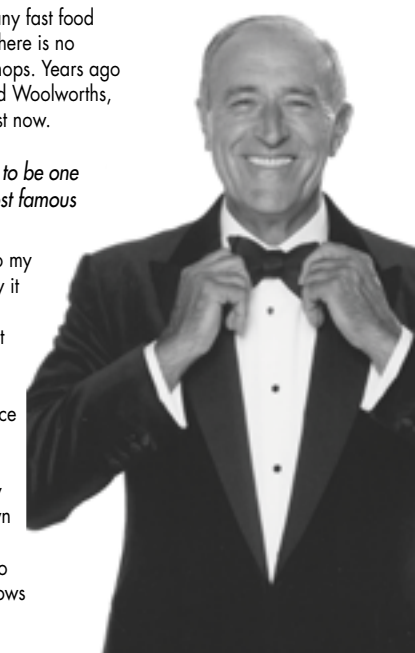
Dartford Park. For a small town, which really is what Dartford is, we have a lot: the park, the Orchard Theatre. The disco, Air gives the young people somewhere to go.

*What is the worst thing?*

There are too many fast food restaurants and there is no diversity in the shops. Years ago we had M&S and Woolworths, that's all been lost now.

*How does it feel to be one of Dartford's most famous residents?*

It has not gone to my head. I was lucky it came to me very late in life. I don't see myself as a celebrity; I'm Len Goodman a dance teacher with a dance school in Dartford. It's only when I walk down the street and people stop me to ask about the shows that I realise it.



# SHENLEY TYRES

THE CHEAPEST BRANDED TYRES IN DARTFORD  
NEW AND PART WORN

- Minor Mechanical Repairs
- Unwanted cars bought for cash

TEL: 07533 193427 / 07832 366677  
Shenley Road, Dartford, Kent DA1 1TG

## Beauty by Sandra

[www.beautybysandra.com](http://www.beautybysandra.com)

Home based salon overlooking garden.  
Very relaxed atmosphere

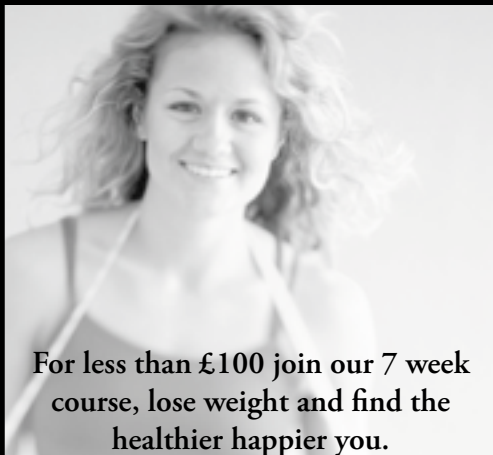
### Treatments include:

- Waxing
- Facials
- Eye Treatments
- Manicures
- Pedicures
- Massage



18 MAIDA VALE ROAD, DARTFORD DA1 3BT  
01322 293754 / 07944 615331

## Weight Loss Academy Julie Bartlett



For less than £100 join our 7 week  
course, lose weight and find the  
healthier happier you.

Courses running in Hartley and Dartford  
Hartley - Friday 9.30-11.30am Dartford - Wednesday 7-9pm

Call Julie Bartlett 07932 632094  
or visit [www.weightlossacademy.co.uk](http://www.weightlossacademy.co.uk)

# Dhiren's Automotive News

*The last month has been another busy month.  
The manufacturers have been preparing for their 2009 models.*

RENAULT HAS ANNOUNCED DETAILS  
OF THE ALL-NEW MEGANE.



The Megane's looks have somewhat changed from its predecessor, with some features from the Laguna. At launch it will be available with various petrol and diesel engine options, varying from 1.4 litre 128hp to 2.0 litre 150hp. The new Megane goes on sale internationally in November 2008.

TOYOTA HAS RELEASED  
INFORMATION OF THE NEW iQ.



It's a small clever car, with smart design features, which gives it a spacey interior. There will be enough to accommodate three adults and one child. The iQ will be in showrooms in Spring 2009, with two petrol and one diesel engine, and CO2 emissions from as low as 100g/km.

THE ALL-NEW FORD KA IS STYLISH,  
MODERN AND GREAT FUN TO DRIVE.



The affordable Ford Ka is designed to be both cheap to run and kind to the environment. It uses two economical engines – 1.2 litre 69hp petrol and 1.3 litre 75hp diesel. Both variants are available with sub-120g/km CO2 emissions. It will be available late 2008/early 2009.

A FRONT-WHEEL DRIVE VERSION OF  
THE FIAT SEDICI HAS GONE ON SALE  
IN FIAT DEALERSHIPS.



At a cost of £9,999, it is very competitively priced and has all of the versatility of its four-wheel drive counterpart, without the price tag. The Sedici 4x2 comes with a 1.6 litre 107hp engine and 16-inch alloy wheels.

# COMPETITION

## The Orchard Theatre Present **Seven Brides for Seven Brothers**

**THE ORCHARD THEATRE, DARTFORD**  
**Tuesday 4 - Saturday 8 November 2008**

Box Office 01322 220000 or [www.orchardtheatre.co.uk](http://www.orchardtheatre.co.uk)

Featuring classic songs including: Bless your Beautiful Hide,  
Goin' Courtin', Wonderful Wonderful Day, Sobbin' Women,  
Lonesome Polecat, Spring, Spring, Spring, Love Never Goes Away.



Voted the 3rd most popular musical of all time by BBC Radio 2 listeners, *Seven Brides for Seven Brothers* is a glorious romp, brimful of hand clapping effervescent energy, dazzling dance routines and sixteen smash hit showstoppers by Johnny Mercer and Gene de Paul, that perfectly integrates song, dance, and story.

Set in Oregon in 1850 *Seven Brides for Seven Brothers* is the story of Adam, the eldest of seven brothers, who goes to town to get a wife. He convinces Milly to marry him that same day. They return to his backwoods home. Only then does she discover he has six brothers -- all living in his cabin. Milly sets out to reform the uncouth siblings, who are anxious to get wives of their own. Then, after reading about the Roman capture of the Sabine women, Adam develops an inspired solution to his brothers' loneliness . . . kidnap the women they want!

Colourful costumes, fabulous sets, sassy performances, this breathtaking production is guaranteed to put a spring in your step and a tune on your lips. It's toe-tapping good!

We have a pair of tickets up for grabs for  
Tuesday 4th November (7:45pm) if you can answer the following:

**In what year is *Seven Brides for Seven Brothers* set?**

A) 2000 B) 1850 C) 1966 D) 1066

Please send your answer, name and telephone number (by 20th October) to:  
[competition@dartfordliving.com](mailto:competition@dartfordliving.com) or October Competition,  
Dartford Living, PO Box 283, Dartford, Kent, DA1 9BW

**PLEASE MAKE SURE YOU ARE ABLE TO MAKE THIS  
PERFORMANCE AS TICKETS CANNOT BE CHANGED  
FOR ANOTHER TIME, DATE OR SHOW**

**SEPTEMBER'S ORCHARD COMPETITION WINNER: KEN POLLARD, DENE ROAD, DARTFORD**



## *Pandemonium Parties*

*For your child's special Birthday Party*



**Let us take all the pain out of  
organising your child's party!**

*We turn our large hall into your front  
room - balloons and banners welcome  
the children and professional, CRB  
checked party hosts run the event for you!*

*We provide invitations,  
food and drink, party games, themes  
- in fact everything to make the day special.*

*All you do is bring the cake along!*

**For details ring: 07790 212861**

## *Powdermill Garden Suite*

**For weddings, christenings  
and all family functions.**

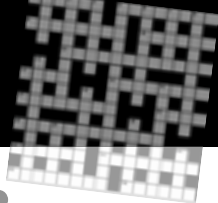
*Large licensed hall holds 200 people. Set in wonderful  
gardens for all to enjoy. Large car park - even buses to  
pick up and drop off your guests if you wish. Marquee  
can be erected in the grounds if preferred. We have  
several weddings and family events under our belt  
and are now ready to launch the Powdermill Garden  
Suite for further use.*

*We will organise your catering, disco, licensed bar,  
hall decorations, child care - anything and everything!  
And the difference is we will work with you to  
keep costs as low as we can.*

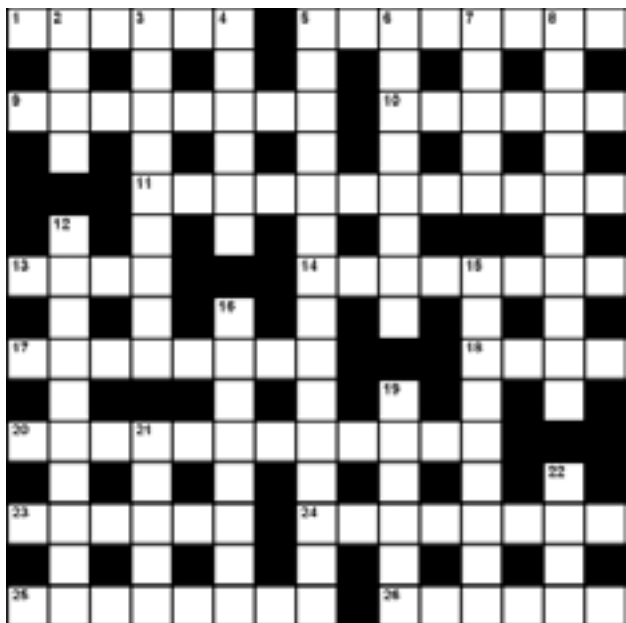
**For details ring: 07790 212861**



*For more details on all of the  
above please check our website:*  
**[www.springfielddn.co.uk](http://www.springfielddn.co.uk)**  
*Springfield Lodge, Powdermill Lane, Dartford  
email: [functions@springfielddn.co.uk](mailto:functions@springfielddn.co.uk)*



*Can you work out the answers?  
Fairly hard and a little bit cryptic!*



(c) 2004-2008 Geraint Tucker (Granite Crosswords)

**ACROSS**

- 1 Bounty for returning drawer? (6)
- 5 Temper of French rat in brief moment with ecstasy (8)
- 9 Prescott arranged shields (8)
- 10 Written message in scarlet terrain (6)
- 11 Not new - made out of date (3-9)
- 13 Heroic tale in books again (4)
- 14 End prisoner, clued ambiguously (8)
- 17 Iron Saint I left without Virginia celebration (8)
- 18 No, a French word type (4)
- 20 AUT's pre-term disorganisation, without initially easing amounts of heat (12)
- 23 Land mass I defame without hesitation (6)
- 24 Works Peseta or otherwise (8)
- 25 Equivalent words for my return in second year?  
No, first of November - safety first (8)
- 26 Bert went yonder, containing number (6)

**DOWN**

- 2 Mistakes, or missing strays (4)
- 3 Spaceman at Saturn explosion, with nothing inside (9)
- 4 Time period of French advert in church (6)
- 5 Endless clumsy, antisocial, unusual errors (15)
- 6 Do greeting, North-South, without record sea creatures (8)
- 7 Relative size of a team leader in Rio (5)
- 8 Great monster due out of order (10)
- 12 Vehicle with slippery eels - cunning and without caution (10)
- 15 Painting country's cloak (9)
- 16 Regularly common (8)
- 19 Pressing? You are reportedly a man! (6)
- 21 Quiet instrument (5)
- 22 Held strange desktop without DOS (4)

*For your chance to win one of two Goals/Umbro Footballs, please send your name, address and telephone number with completed crossword to:*

**October Crossword Competition,**  
Dartford Living, PO Box 283,  
Dartford, Kent DA1 9BW  
(Before 20th October)  
Prizes to be collected in person  
from Goals, Dartford Branch.

**Congratulations to  
September's Winners:**  
Derek Morgan, Springcroft,  
Hartley  
Brian Hemsley, Eversley Avenue,  
Bexleyheath

# CALLING ALL INTREPID EXPLORERS

**Looking for a holiday with a twist next year?  
Then why not trek to the Home of the Dalai Lama  
and raise vital funds for the Ellenor Lions Hospices.**

Booked for 31st October 2009, this unique expedition combines awesome Himalayan trekking with a visit to India's exiled Tibetan community. The challenge begins and ends in Dharamsala, where the Dalai Lama and the centre of the Tibetan Community are situated, at the heart of the world's highest mountain range.

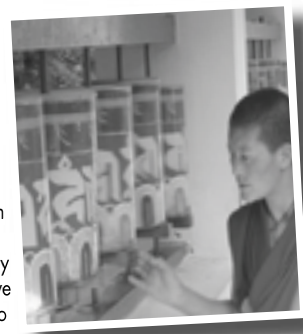
Your two week expedition follows the Uhl River, through rhododendron and evergreen forests. The route takes in Hindu settlements and isolated Buddhist monasteries. The region remains largely unvisited, which makes it a pristine and unspoilt area to trek.

You spend a night beside nomadic shepherd encampments, and another in the Taragarh Palace, home to Maharajas for centuries.

You can then spend your final day exploring the Taj Mahal - one of the greatest monuments to love ever built.

Linda Trew of the Ellenor and Lions Hospices said this "having done a number of charity treks I can honestly say there are very few things that give you the same feeling of personal achievement like completing a challenge like this. It really is a win win situation, you get to see parts of a country you would never normally go

to, make new friends and develop new skills. All this in the knowledge and comfort of knowing that your sponsorship is really going to make a difference to someone who is facing a much tougher challenge than you!" She continued "Our aim is to raise enough money to fund a nurse for a year, we are appealing to everyone to join us on what promises to be a trip of a lifetime. We will support you with fundraising and training, so there really isn't anything stopping you!"



**To secure your place on this truly magical expedition you need to pay a registration fee of £475 + insurance and then pledge to raise a minimum of £2,850 for Ellenor Lions Hospices.**

**Places are limited, to secure your place please call Linda Trew, Corporate Partnerships Manager on Tel: 01322 422845 or email [linda.trew@ellenorfoundation.org](mailto:linda.trew@ellenorfoundation.org)**

**Photo-Diva**  
Local Social and Event  
Photography  
(See: [www.contemporarystyle.co.uk](http://www.contemporarystyle.co.uk))  
Photo Retouching  
Image restoration  
Graphic Design &  
Technical Illustration  
All enquiries contact:  
Carol  
Tel: 07957-123541

**CLEANERS  
URGENTLY  
REQUIRED  
FOR THE  
DARTFORD AREA**  
Please call Sam on  
**01322 287821**

**MEMBERSHIP OF  
THAMES GATEWAY  
(KENT) CHAMBER OF  
COMMERCE OPENS  
DOORS FOR YOUR  
BUSINESS**

*We offer the best networking opportunities in North Kent. We can also help you build your business contacts and save you money at the same time.*

Call 01634 311 411

enquiry@tgcoc.co.uk

www.tgcoc.co.uk

**Financial Advice from  
John Folkard**

**Contact me if you require independent advice on**

**Mortgages, Life Insurance, Accident, Sickness and Unemployment Insurance, Buildings and Contents Insurance, Pensions\*, Investments\*, Unit Trusts\*, ISAs\*, Inheritance Tax\*, Wills and Trusts\*, Capital Gains Tax\***

**Telephone: 07860 471 194**

**Email: johnfolkard@susanfleck.co.uk**

\*Advice on these products will be given by other advisers from the Susan Fleck team

Susan Fleck Associates Ltd, are authorised and regulated by the FSA, Goswille House, Goswille Road, Maidstone, Kent ME14 2BJ

**P. CLARK  
GENERAL BUILDERS  
(EST. 1976)**

**All enquiries contact Paul:**

**Tel: 01322 270951 Mob: 07985 457432**

**Email: paclark26@aol.com**

- Bathrooms • Kitchens • Flat Felt Roofing
- Carpentry • Guttering • Decorating • Tiled Roofing
- Plumbing • Boiler Servicing • Fencing • Block Driveways
- Brickwork • Plastering • Electrical Installations
- Extensions & Loft Conversions Project Managed

**Fully Qualified Tradesmen  
Electrical NICEIC Registered  
Plumbing Corgi Registered**

# Bav's Sporting Comment

**England manager Fabio Capello said the secret to the 4-1 win against Croatia in Zagreb was that his side played with "confidence and courage".**

He saw Theo Walcott, aged only 19; become the youngest player to hit a hat-trick for England as they inflicted a first competitive defeat on Croatia at home. The boy showed all his doubters, exactly why Arsene Wenger decided to pay up to £12m for him and why Sven Goran Eriksson decided to put him into the 2006 world cup squad – because he is special, with the potential to be a big match winner. Those players are like gold dust... let alone English.

**This was always going to be different from any other recent Olympics.**

None of the usual questions that tend to surround an Olympics mattered here: money, organisation, level of government support and the public's enthusiasm – or indeed lack of it. China has given us great venues – there can be nothing more iconic than the Bird's Nest. The infrastructure development has been amazing.

We had a first week dominated by the amazing Michael Phelps. Athletics in Beijing will be remembered for Usain Bolt in the second week. In order to immortalise the games, you always need superheroes. You need stars that everyone round the world knows. We had two such world superheroes. Alongside all this, Team GB has broken free from the rather depressing British history of failing to deliver, by enjoying its best Games for a century, and finished fourth in the medals table – a truly great achievement.

People are talking about whether London 2012 can live up to the Olympic ideals – and even though we've left behind the stunning spectacle of Beijing, we know for certain that the Olympics will be one of the biggest themes in British life for the next four years and beyond. That's because the audience figures confirm the nation was hooked. It is said that 80% of the UK's audience watched at least 15 minutes of the games.

**In football, the transfer day deadline drew some fun and games... more than usual.**

Manchester City's new owners, The Abu Dhabi United Group, funded the stunning capture of Brazilian forward Robinho from Real Madrid for a British record fee of £32.5 million. That came after they had failed in a bid to hijack United's purchase of Tottenham striker Dimitar Berbatov, where Alex Ferguson supposedly had to intervene personally by picking up Berbatov personally from the airport, to get the striker to Man Utd for £30.75 million. Both Kevin Keegan and Alan Curbishley have left their clubs citing "a lack of control over transfer policy". Maybe there will be another return for King Kev to Newcastle?

**Upcoming events this month include:**

CRICKET Twenty20 Champions League tournament; RUGBY LEAGUE Oct 4 Old Trafford: Super League final; GOLF Oct 9-12 Wentworth: World Match Play Championship.

# SUDOKU

HOW TO PLAY: Fill in the grid so that every row, every column and every 3x3 box contains the digits 1 through to 9, with no repetition. That's all there is to it!

|   |   |   |   |   |   |   |   |   |
|---|---|---|---|---|---|---|---|---|
| 8 | 2 |   | 1 | 7 |   |   |   |   |
| 4 |   |   | 8 | 2 | 7 | 3 | 1 |   |
|   | 1 | 7 |   |   | 4 | 8 |   | 2 |
| 2 |   |   |   |   |   | 6 |   | 9 |
|   | 8 | 3 |   | 6 |   | 5 |   |   |
|   |   |   |   |   | 3 |   |   |   |
| 6 |   | 9 |   |   |   |   | 1 | 7 |
| 5 |   |   |   |   |   | 9 | 4 |   |
|   |   |   |   |   |   |   |   |   |
|   |   |   | 5 | 9 |   |   |   |   |

(Solution on page 30)  
Sudoku provided by www.free-sudoku.net

## Craft Frames



Quality  
Picture  
Framing



Free advice and estimates  
Needlework & Card Making  
Sequin Art  
D.M.C. Stockist  
Embroidery Day Classes

**Well Worth a Visit!**

01322 278703  
21 West Hill Dartford DA1 2EL  
Free parking at rear.

**C**  
**B** Craig  
Baker

*Plastering, Rendering  
& Screeding Specialist*

- *FREE ESTIMATES*
- *22 YEARS EXPERIENCE*

**Mobile: 07930 969 903**  
**Home: 01322 220341**

## CHARLES CARPENTRY

Covering all aspects of carpentry  
SERVICES INCLUDE:

- Fine fitted furniture • Staircases
- Balustrades • Doors and Frames
- Skirting & Architrave

*City & Guild Qualified, Fully Insured,  
References & Portfolio available, Free Quotations*

**PHILLIP CHARLES**  
**01322 281765 / 07951 609328**  
p.charlescarpentry@talktalk.net

Competitive  
Rates!

## A BAINES & SON ROOFING

- New Roofs • Repairs • Tiles • Slates
- Flat Roofs • All Lead Work
- UPVC Fascias & Soffits
- All Guttering
- All Work Guaranteed
- Insurance Work Undertaken

**TEL: 01322 271693**  
**MOBILE: 07971 792463**

## CLAREMONT DECORATIVE SERVICES



- ALL TYPES OF INTERNAL AND EXTERNAL DECORATING
- AROUND THE HOUSE MAINTENANCE JOBS
- FREE ESTIMATES
- REFERENCES AVAILABLE
- RELIABLE, INEXPENSIVE AND QUALITY WORK BY LOCAL TRADESMEN

**CAN WE HELP YOU?**

Please call Mike or John on: Tel 01322 406439 / 01322 525708  
Mobile: 07742 085333 Email: mikeperry5001@ntlworld.com

Partners: Mike Perry and John Petherick

# SUDOKU

## October's Solution

|   |   |   |   |   |   |   |   |   |
|---|---|---|---|---|---|---|---|---|
| 8 | 5 | 2 | 3 | 1 | 6 | 7 | 9 | 4 |
| 4 | 9 | 6 | 8 | 2 | 7 | 3 | 1 | 5 |
| 3 | 1 | 7 | 5 | 9 | 4 | 8 | 6 | 2 |
| 2 | 7 | 4 | 1 | 8 | 5 | 6 | 3 | 9 |
| 9 | 8 | 3 | 4 | 6 | 2 | 5 | 7 | 1 |
| 1 | 6 | 5 | 9 | 7 | 3 | 4 | 2 | 8 |
| 6 | 3 | 9 | 2 | 4 | 8 | 1 | 5 | 7 |
| 5 | 2 | 8 | 7 | 3 | 1 | 9 | 4 | 6 |
| 7 | 4 | 1 | 6 | 5 | 9 | 2 | 8 | 3 |

# Crossword

## September's Solution

|   |   |   |   |   |   |   |   |   |   |   |   |   |   |
|---|---|---|---|---|---|---|---|---|---|---|---|---|---|
| R | E | C | K | O | N | P | R | O | P | O | S | E | D |
| E | L | P | O | R | A | E |   |   |   |   |   |   |   |
| A | M | A | Z | E | P | O | W | E | R | F | U | L |   |
| C | S | R | A | T | S | E | A |   |   |   |   |   |   |
| H | U | S | B | A | N | D | S | N | E | A | R | B | Y |
| E | R | S | D | I | N | E |   |   |   |   |   |   |   |
| S | H | O | E | F | R | I | G | H | T | E | N | E | D |
| O | P | E | N | S | O |   |   |   |   |   |   |   |   |
| C | O | M | M | I | S | S | I | O | N | F | R | E | E |
| L | O | S | R | G | T | L |   |   |   |   |   |   |   |
| A | N | Y | O | N | E | S | E | A | R | C | H | E | D |
| P | E | E | M | D | E | W | E |   |   |   |   |   |   |
| P | E | A | C | E | F | U | L | C | A | R | E | E | R |
| E | R | R | L | T | S | L |   |   |   |   |   |   |   |
| D | I | S | A | S | T | E | R | G | E | N | T | L | Y |

**DARTFORD LIVING**



WELCOME TO DARTFORD FC

**HOME GAMES FOR THIS MONTH:**

**11 Oct** Ashford Town  
**14 Oct** Margate  
**18 Oct** Harlow FA Trophy  
**28 Oct** AFC Hornchurch



**DARTFORD FOOTBALL CLUB**  
 SUPPORT YOUR LOCAL CLUB!  
 01322 299990 www.dartfordfc.co.uk



# Samantha Ingram

## - Freelance Designer



DARTFORD LIVING PROMOTION

**20% OFF**

ALL NEW DESIGNS BOOKED\*

DESIGN, PRINT & ADVERTISING

- Stationery • Letterheads • Compliment Slips • Business Cards
- Corporate Literature • Presentation Folders • Brochures
- Window Cards • Newspaper Advertising • Estate Agent Boards
- Marketing Materials • Magazines • Mailers
- Posters • Flyers ...PLUS MUCH MORE

Tel: 01322 287821  
 Email: sam\_ingram@sky.com  
[www.designstosuityou.co.uk](http://www.designstosuityou.co.uk)

\* Only one discount per client. Discount applies to final design charge, not print or advertising. Please mention Dartford Living when calling.





**Linklater Opticians**

Established for over 70 years

**When did you last have your eyes checked?**

Linklaters has an extensive range of over 400 styles of glasses to choose from. Bespoke spectacles at sensible prices.

**Tel: 01322 223113**  
 22 Lowfield Street (next to Barclays Bank), Dartford



# 4K Building Services

...all types of building work undertaken






**Specialists in:**

- Block-paved driveways
- Patios and paving
- Brickwork
- Fencing
- Decking
- Drainage
- Footings

Free estimates given  
 References available upon request  
 Pictures shown are genuine examples of customer projects

71 Carlisle Road Dartford Kent DA1 1XJ W [www.4kbuildingservices.co.uk](http://www.4kbuildingservices.co.uk)  
 T 01322 226169 M 07717 296421 E [kieran.norman@4kbuildingservices.co.uk](mailto:kieran.norman@4kbuildingservices.co.uk)



A Local Dealer  
with a difference



We have a lot to offer!

New and Used car Sales over 50 used cars in stock  
from £5,995 to £19,995, Special Finance, Service  
and Fuel Offers available. Service and MOT's  
Tyres, Exhausts, Windscreen, parts, accessories,  
Full body shop service

Bourne Road Garage Ltd

Bourne Road, Crayford, Kent, DA1 4BU

Tel:0845 389 0545 (local rate number)

**[www.bourneroadgroup.co.uk](http://www.bourneroadgroup.co.uk)**

Your local Mazda Dealer for over 35 years

*zoom-zoom*