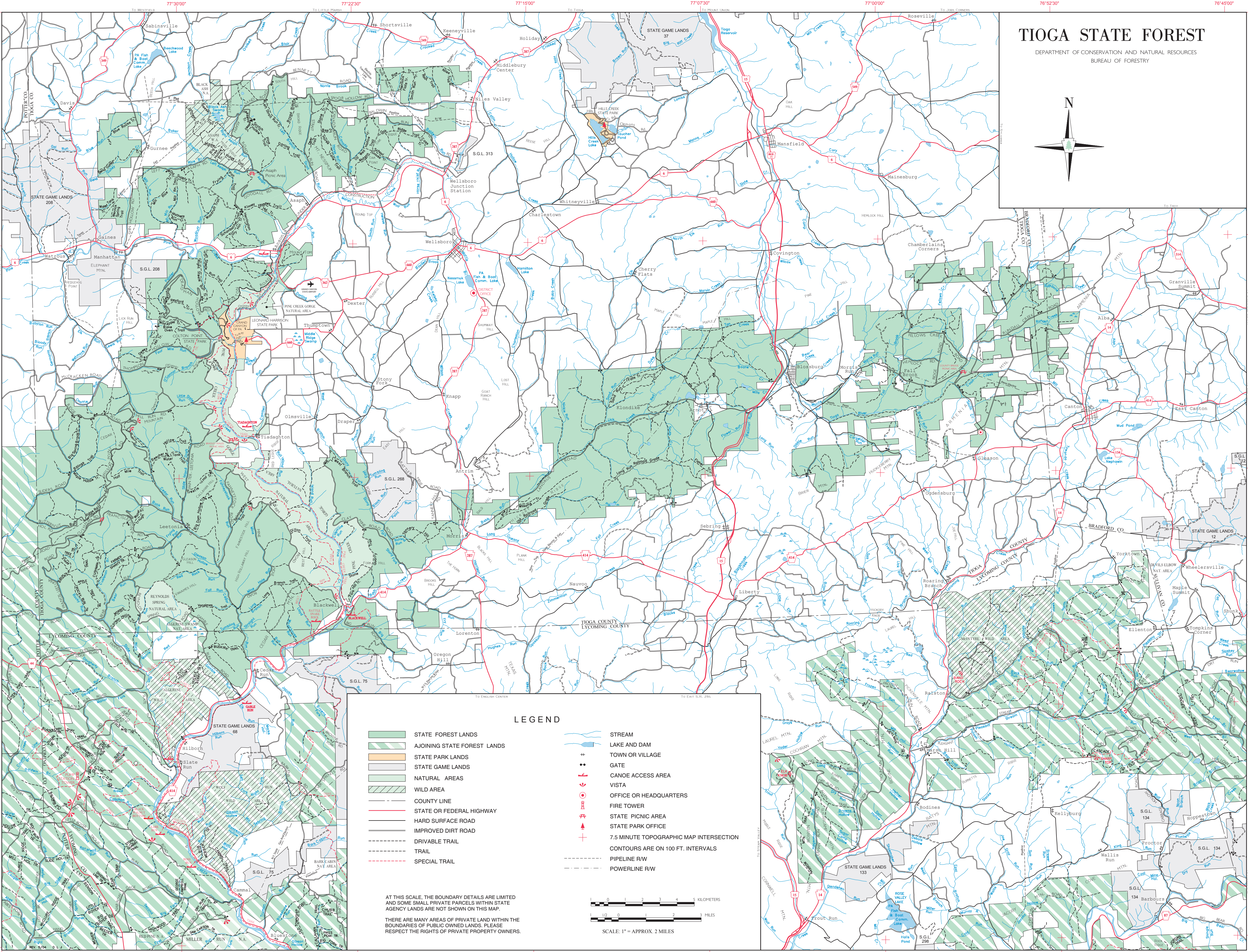
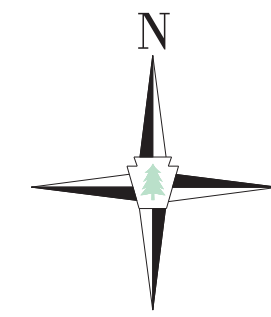


TIOGA STATE FOREST

DEPARTMENT OF CONSERVATION AND NATURAL RESOURCES
BUREAU OF FORESTRY



LEGEND

- | | | | |
|--|-----------------------------|--|-----------------------------------------|
| | STATE FOREST LANDS | | STREAM |
| | AJOINING STATE FOREST LANDS | | LAKE AND DAM |
| | STATE PARK LANDS | | TOWN OR VILLAGE |
| | STATE GAME LANDS | | GATE |
| | NATURAL AREAS | | CANOE ACCESS AREA |
| | WILD AREA | | VISTA |
| | COUNTY LINE | | OFFICE OR HEADQUARTERS |
| | STATE OR FEDERAL HIGHWAY | | FIRE TOWER |
| | HARD SURFACE ROAD | | STATE PICNIC AREA |
| | IMPROVED DIRT ROAD | | STATE PARK OFFICE |
| | DRIVABLE TRAIL | | 7.5 MINUTE TOPOGRAPHIC MAP INTERSECTION |
| | TRAIL | | CONTOURS ARE ON 100 FT. INTERVALS |
| | SPECIAL TRAIL | | PIPELINE RW |
| | | | POWERLINE RW |

AT THIS SCALE, THE BOUNDARY DETAILS ARE LIMITED AND SOME SMALL PRIVATE PARCELS WITHIN STATE AGENCY LANDS ARE NOT SHOWN ON THIS MAP.

THERE ARE MANY AREAS OF PRIVATE LAND WITHIN THE BOUNDARIES OF PUBLIC OWNED LANDS. PLEASE RESPECT THE RIGHTS OF PRIVATE PROPERTY OWNERS.

