

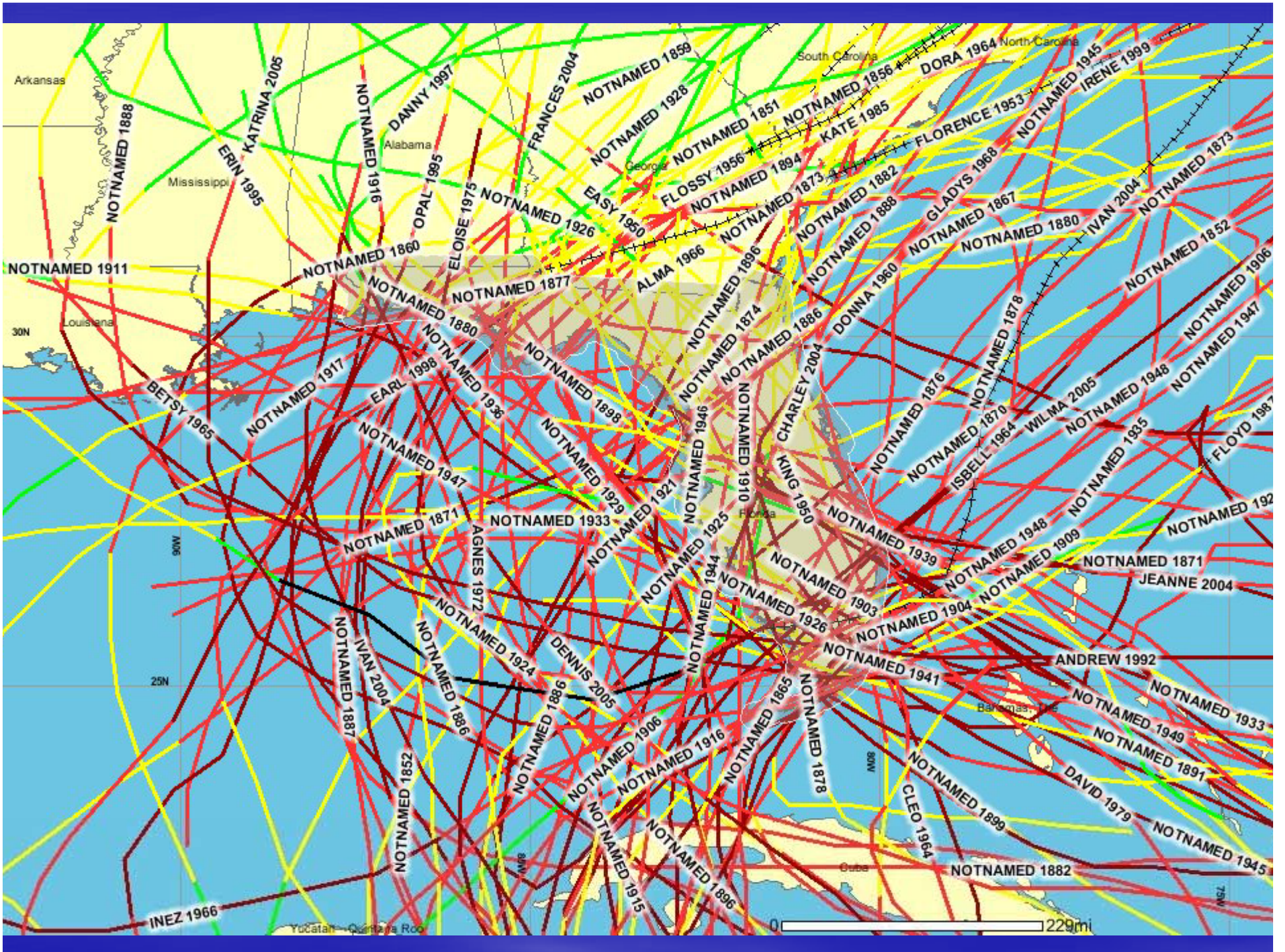
A satellite image of a hurricane over the Gulf of Mexico. The hurricane is a large, dense cloud system with a visible eye and spiral bands. The image is in grayscale with some color highlights. A vertical scale on the left side shows values from 20 to 237. The text is overlaid in yellow and orange colors.

# Infamous Florida Hurricanes

2008 Governor's Hurricane  
Conference

Fort Lauderdale, Florida

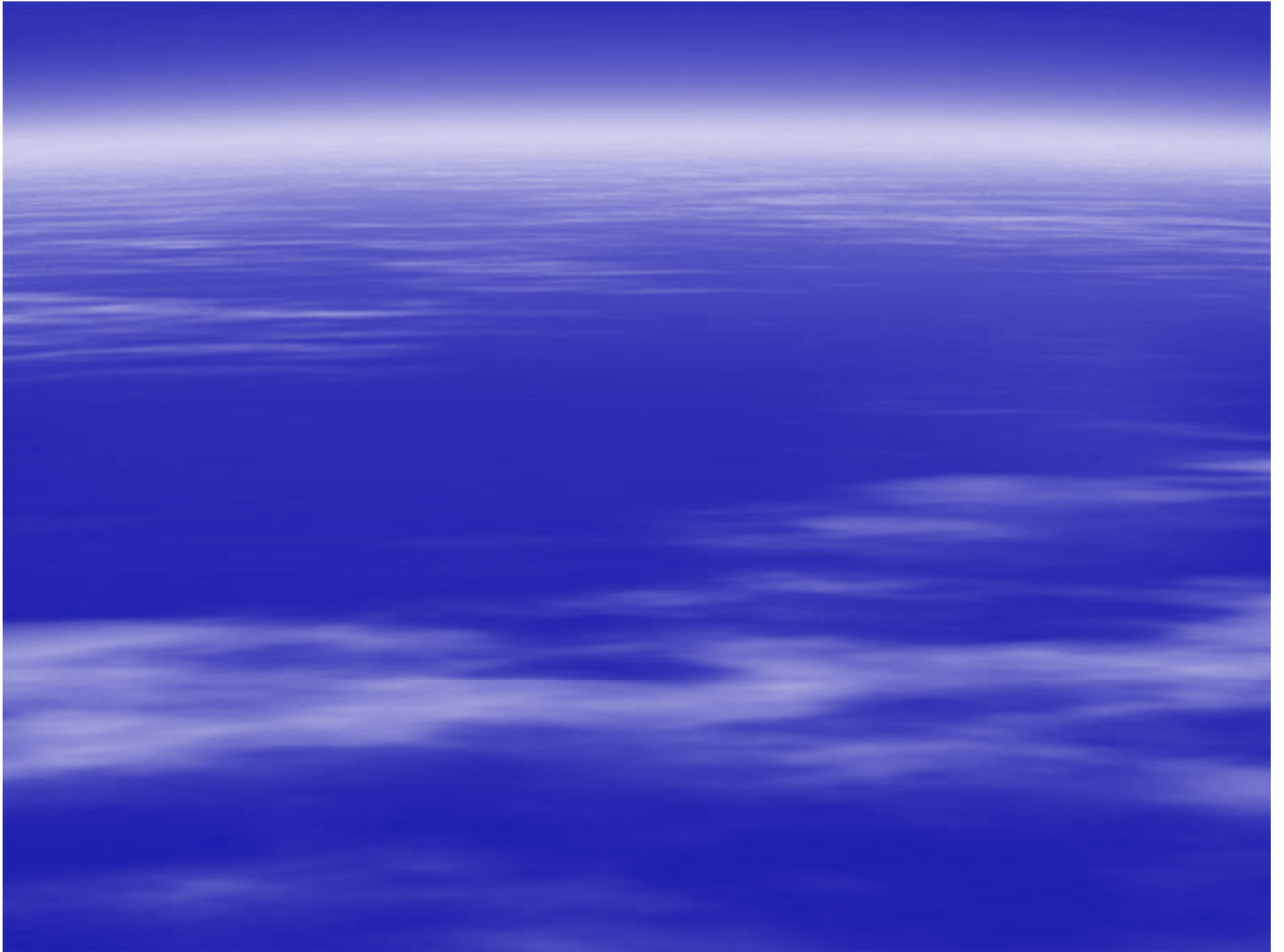






# Workshop Outline

- Introduction
- 1935 South Florida “Yankee” Hurricane
- 1985 Hurricane Elena
- 1994 Gordon



Gordon (1994)  
A Destructive Mind Of Its Own

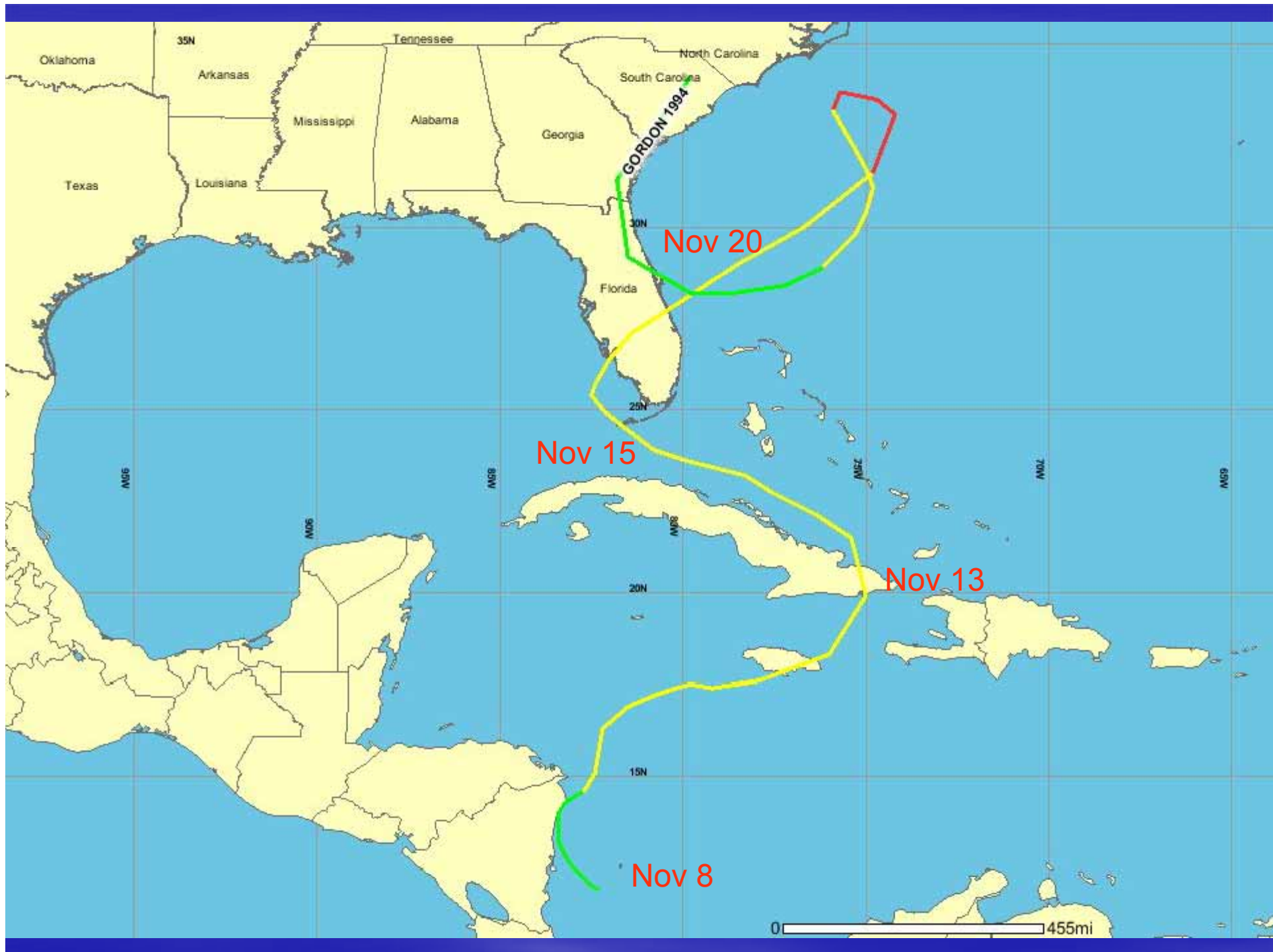
Robert Molleda  
NWS Miami, FL

# Gordon Stats

- Affected Florida November 13-20, 1994.
- First landfall at Key West on 11/15, second landfall near Fort Myers on 11/16, third landfall near Cape Canaveral on 11/20.
- Spawned 6 tornadoes.
- 11 deaths and 43 injuries.
- Total damage estimated at over \$300 million, mostly to agriculture in South Florida.
- Power out to 425,000 customers.

# Gordon Intensity

- Peak intensity over Florida: **45 knots**  
(50 mph)
- Intensified off Cape Canaveral and reached Category 1 (70 knots) intensity south of Cape Hatteras.
- Weakened to tropical depression at third landfall near Cape Canaveral two days later.



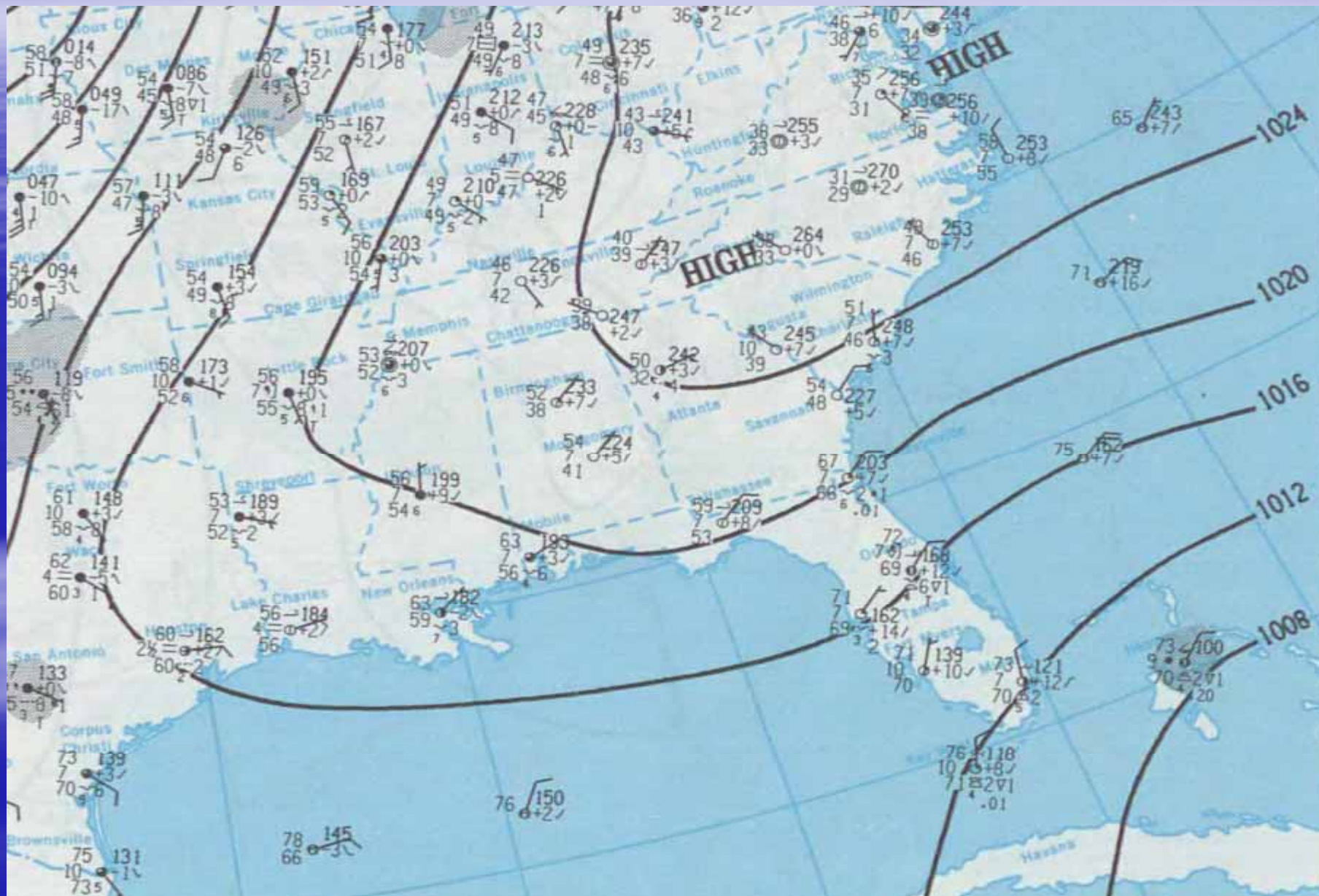




# More Gordon Facts

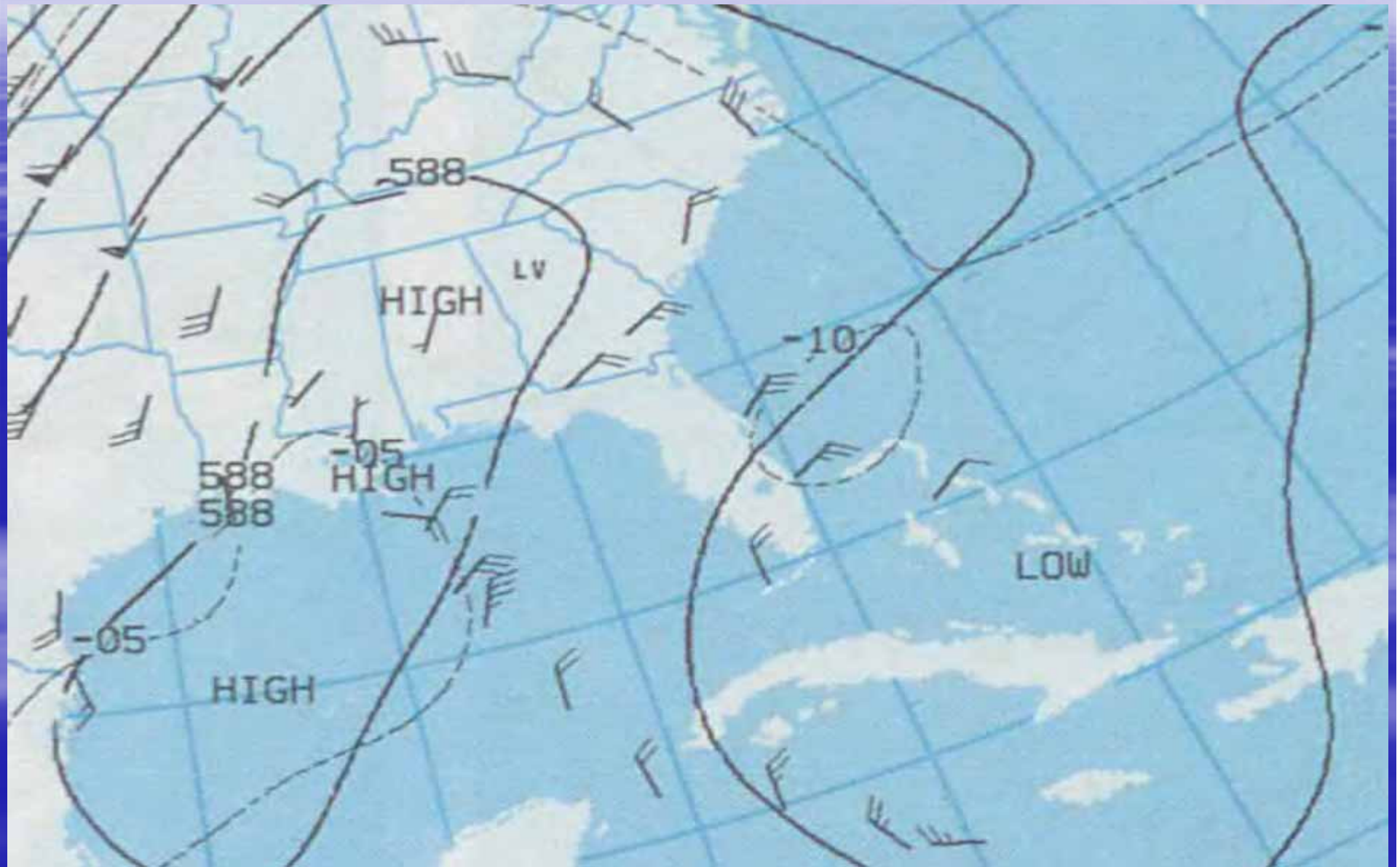
- NHC track errors averaged about 20-30% greater than previous 10-year average.
- Generally underestimated intensity due to hybrid nature of system.

# November 13<sup>th</sup>, 1994

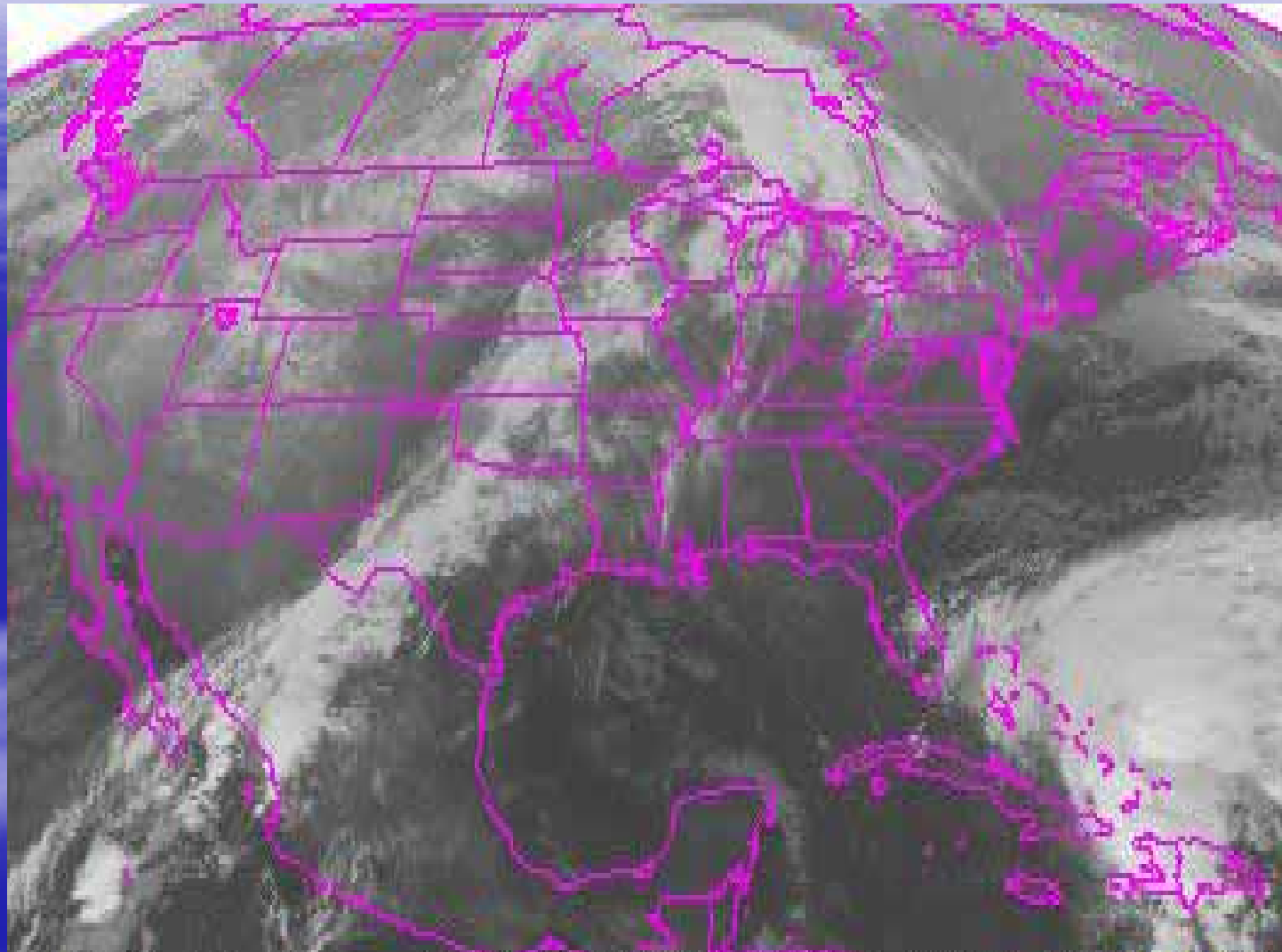




November 13<sup>th</sup>, 1994

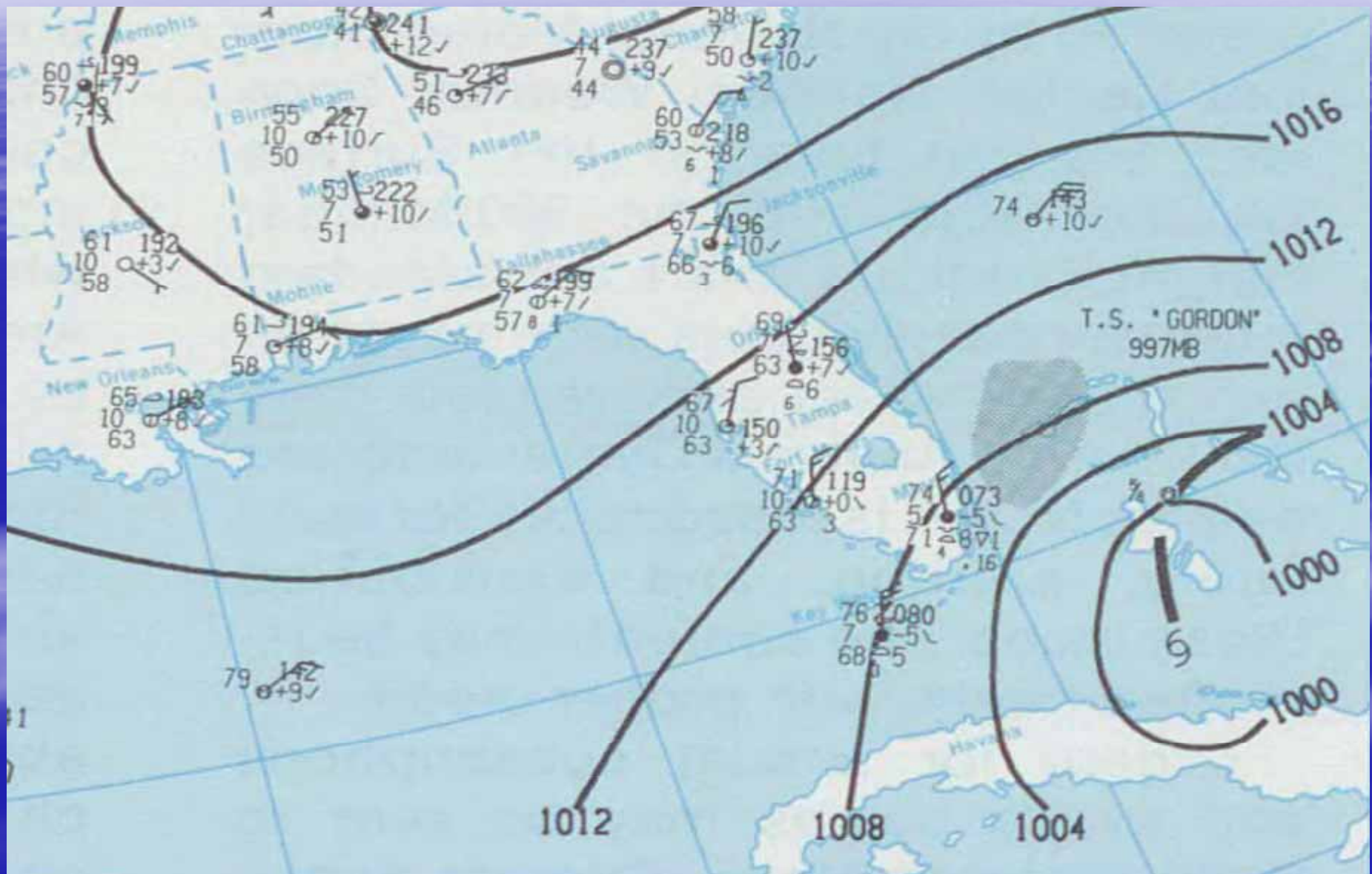


# November 13<sup>th</sup>, 1994



100001 G-8 IMG 4 13 NOV 94317 143200 02988 1088 McIDAS00

# November 14<sup>th</sup>, 1994

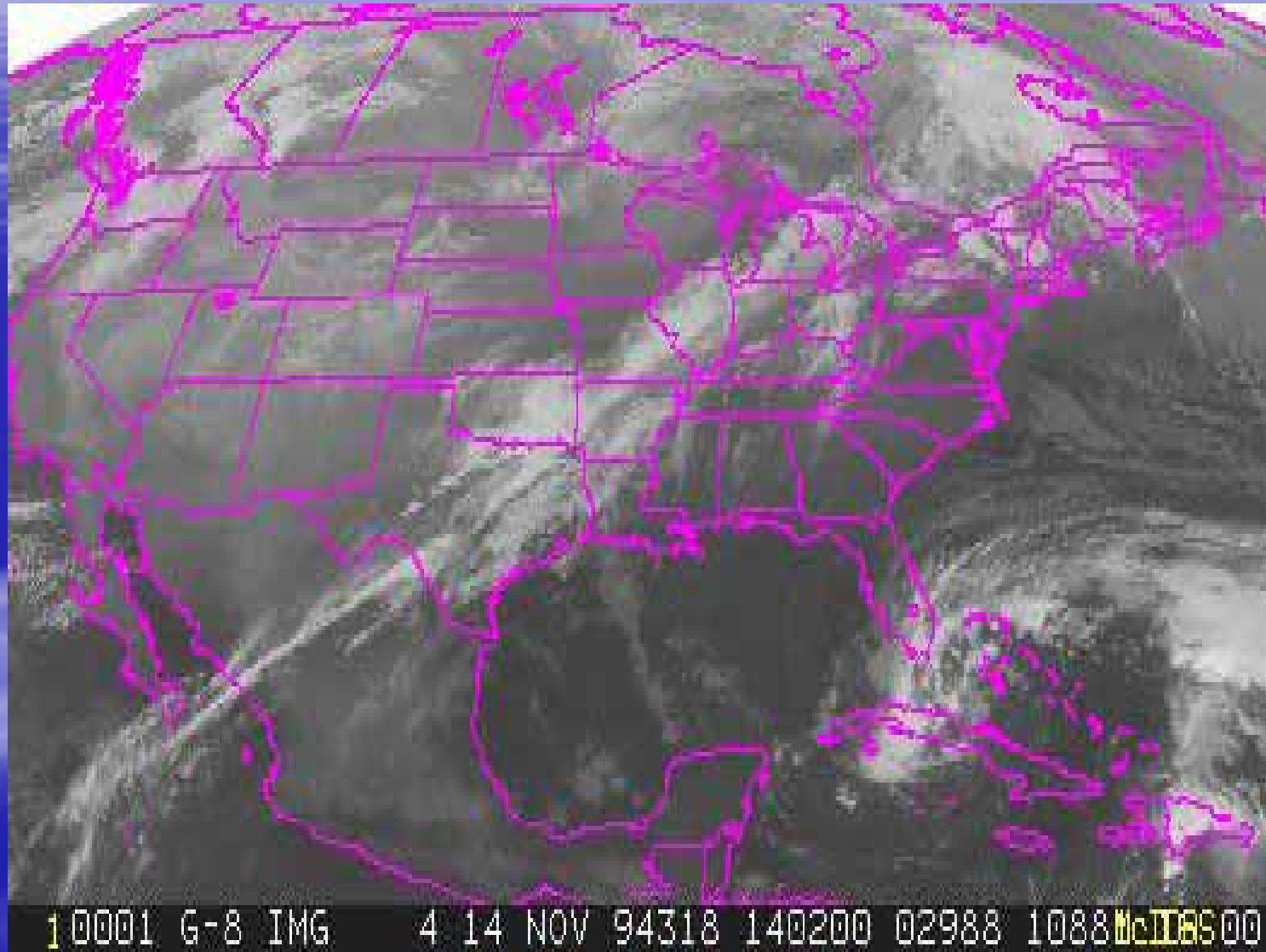




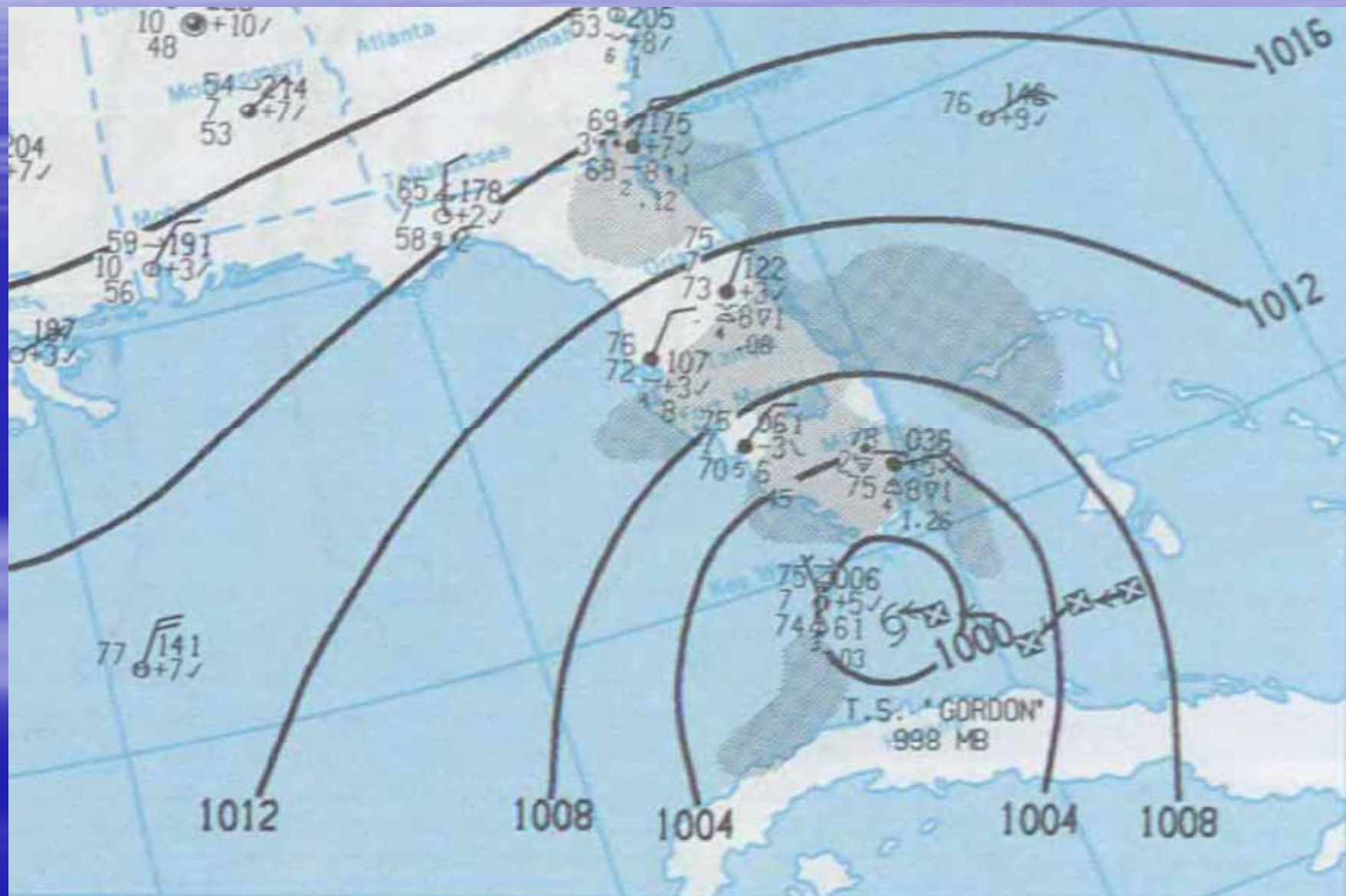
November 14<sup>th</sup>, 1994



# November 14<sup>th</sup>, 1994

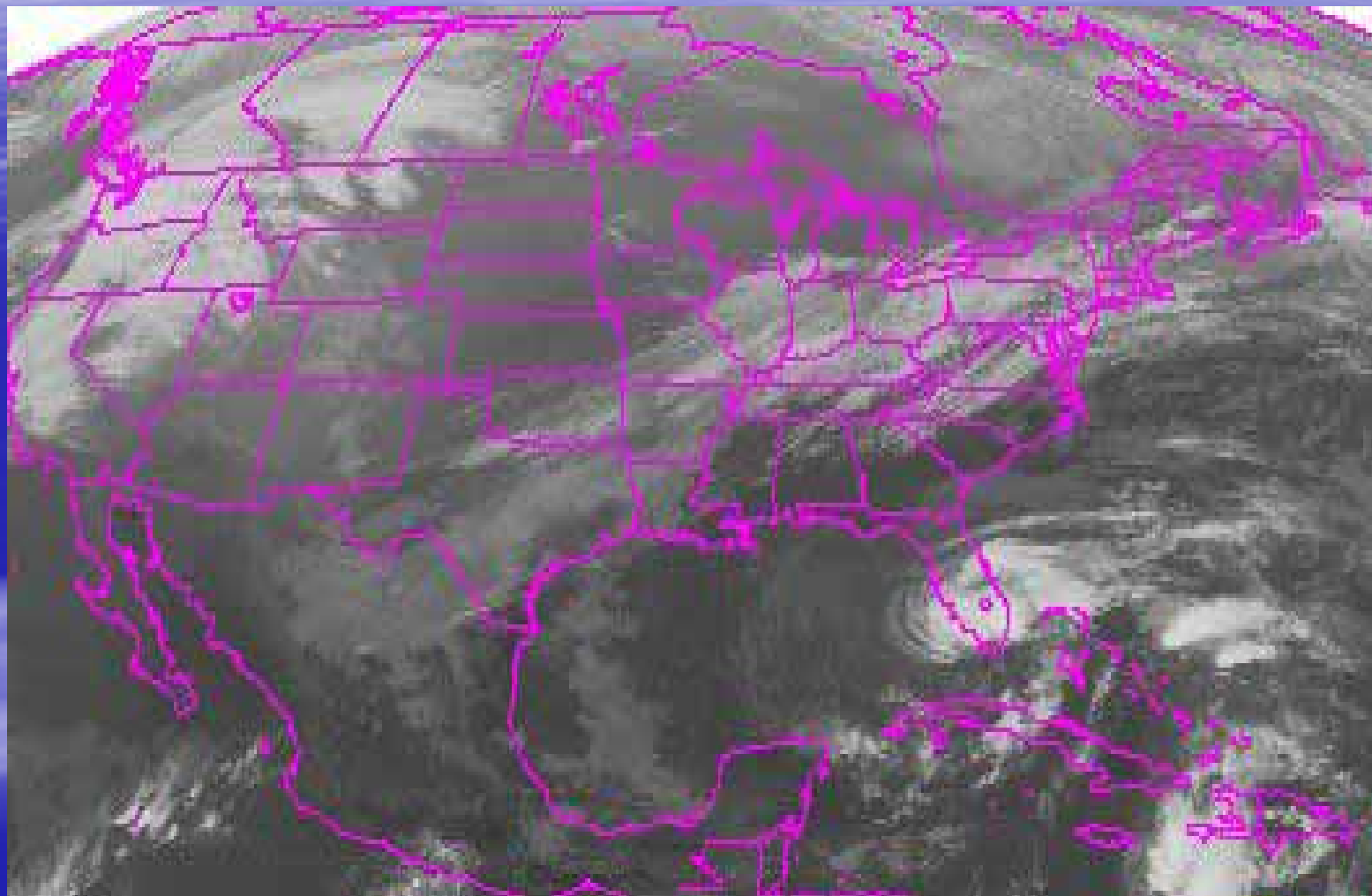


# November 15<sup>th</sup>, 1994



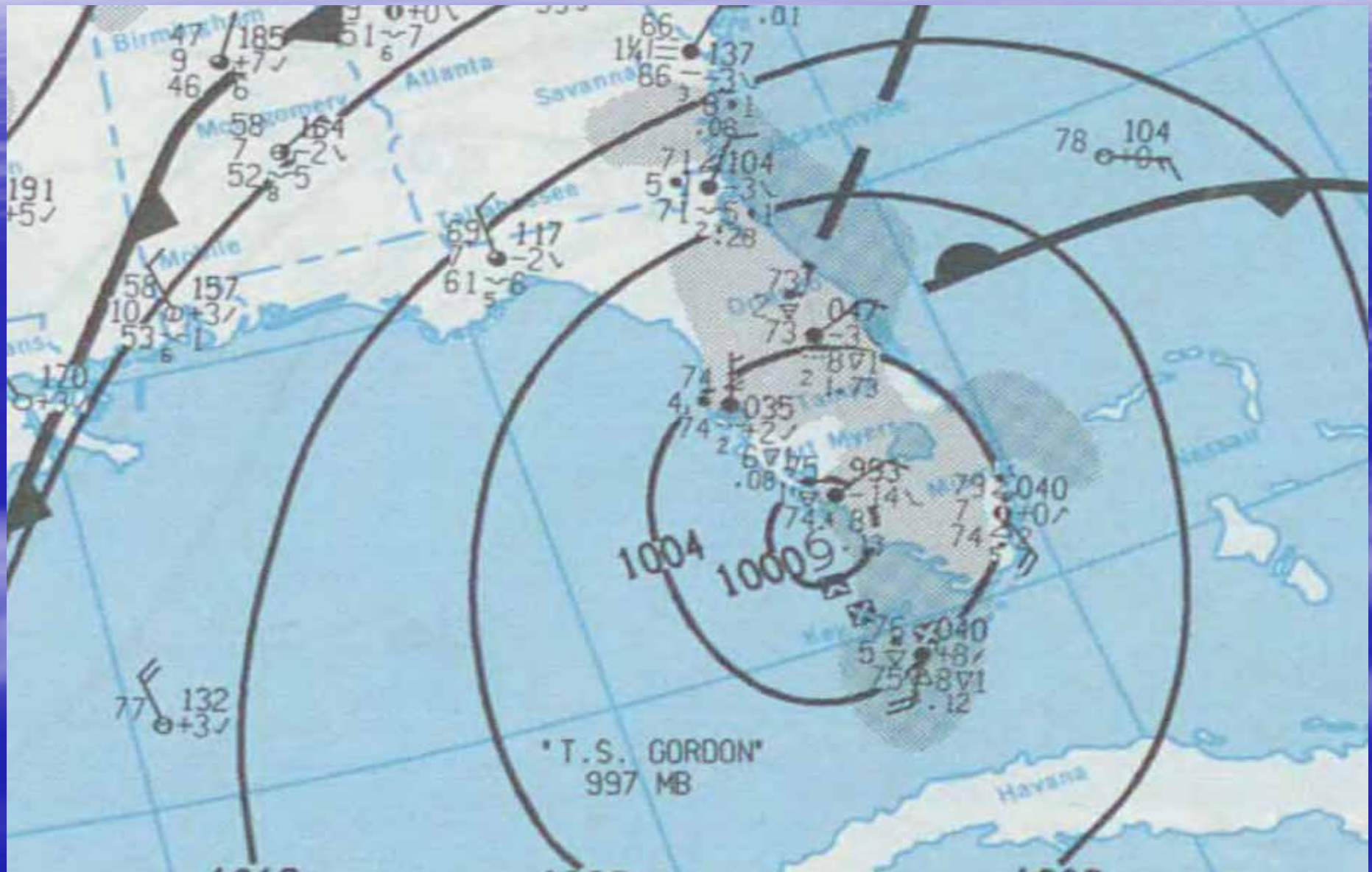


# November 15<sup>th</sup>, 1994

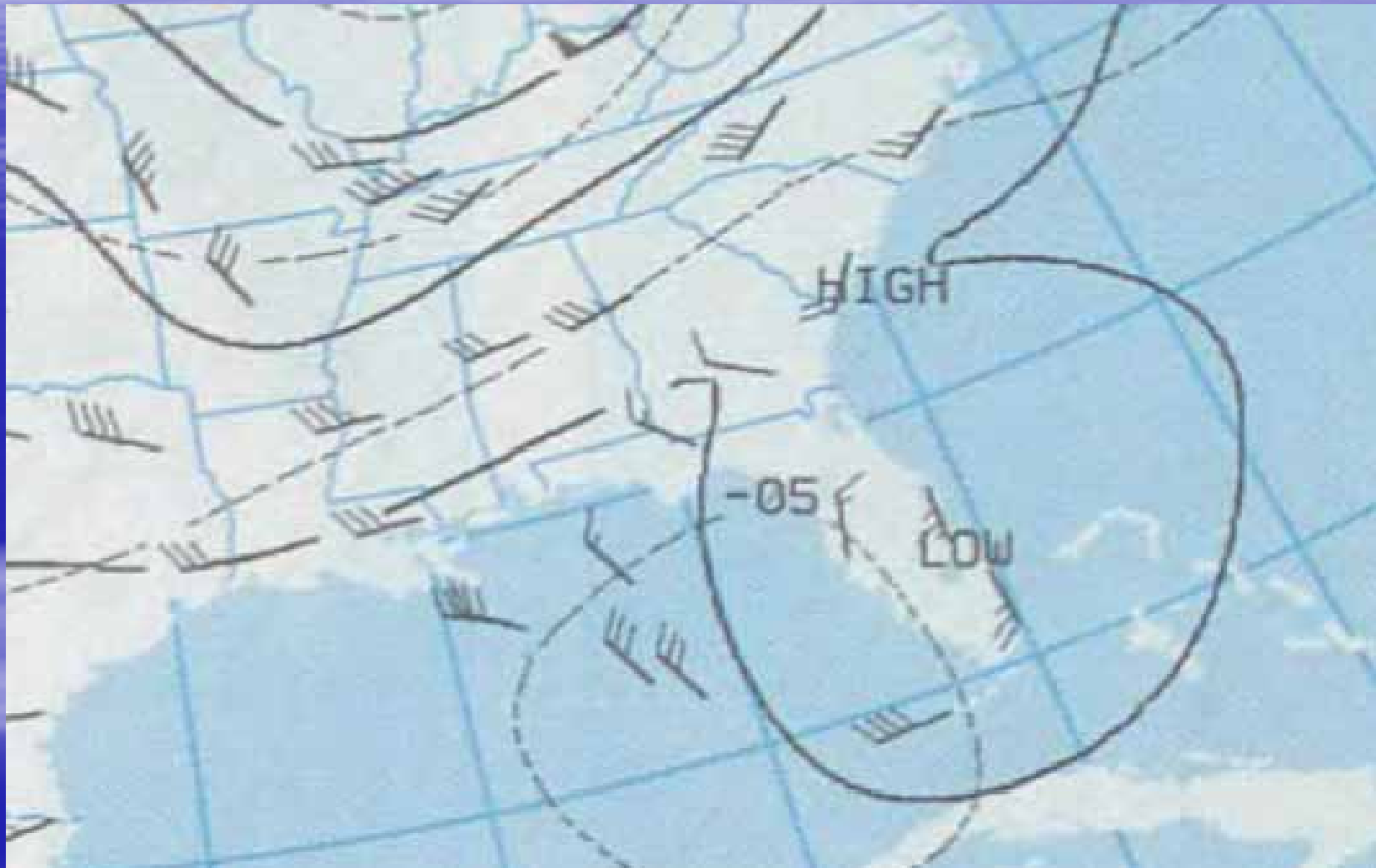


10001 G-8 IMG 4 15 NOV 94319 160200 02988 1088 METEOSAT

# November 16<sup>th</sup>, 1994

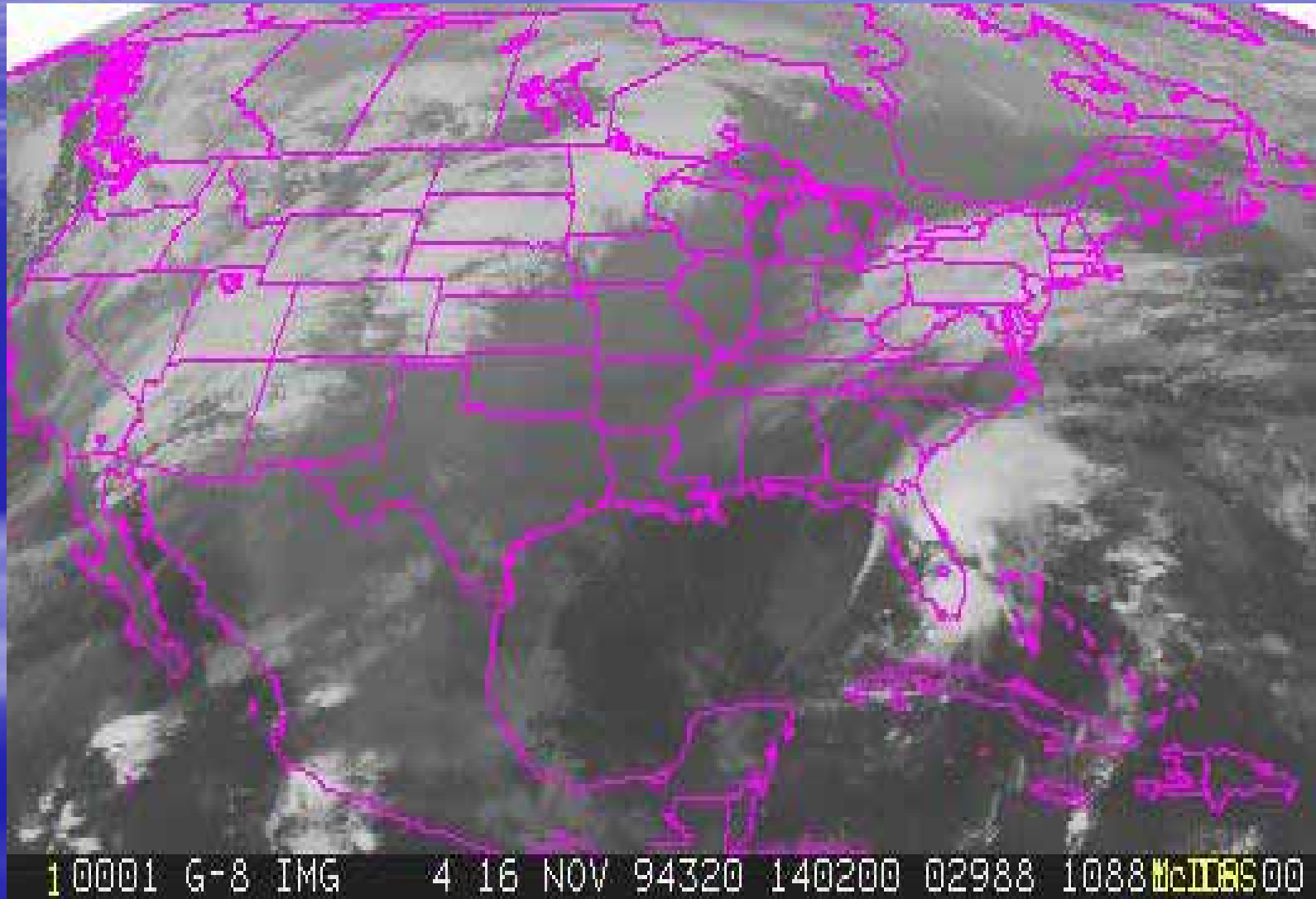


November 16<sup>th</sup>, 1994

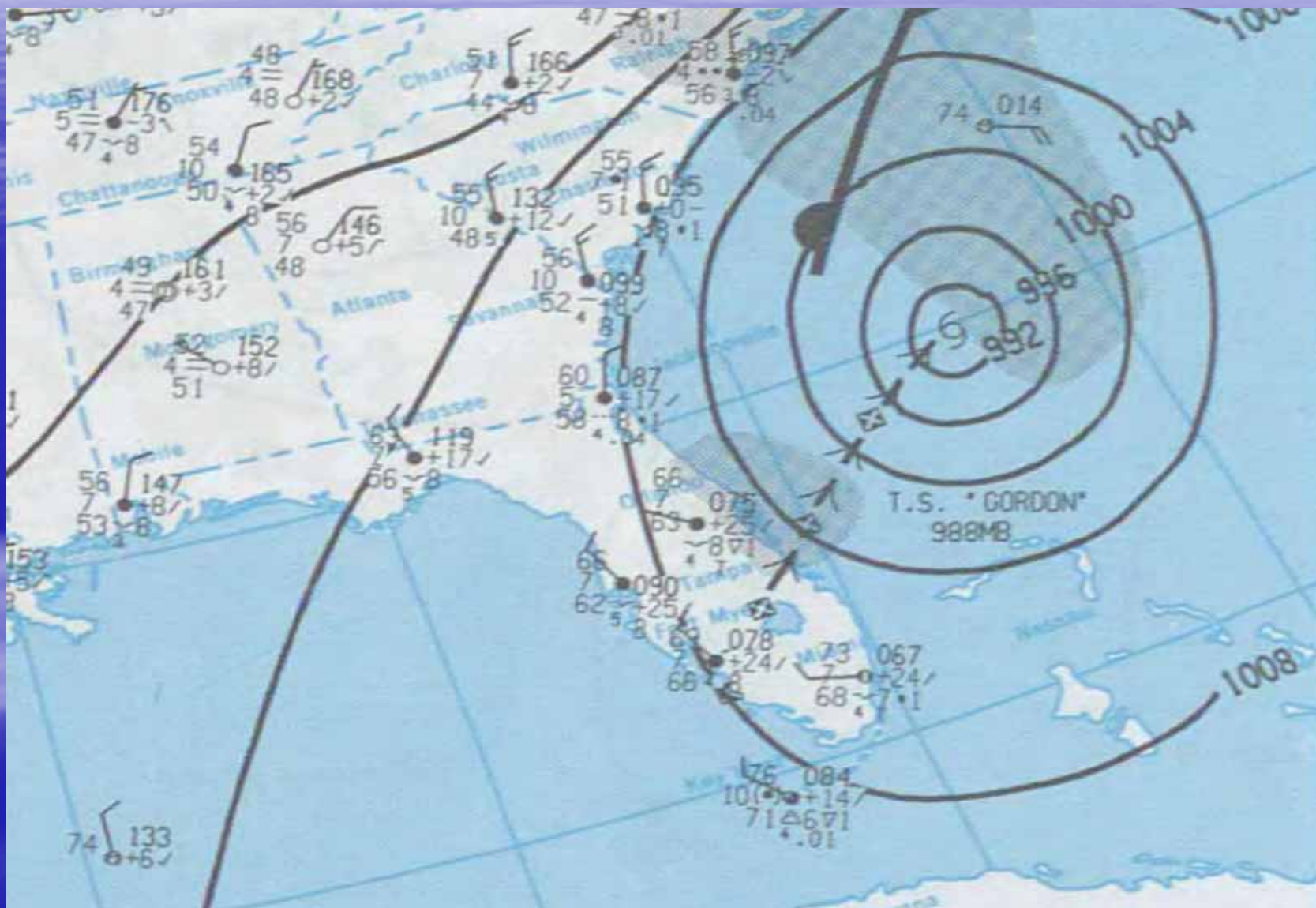




November 16<sup>th</sup>, 1994



# November 17<sup>th</sup>, 1994



# November 20<sup>th</sup>, 1994





# Gordon Rainfall

- 6-9 inches widespread over south and east-central sections of Florida peninsula.
- 12-16 inch amounts over portions of southeast Florida. Agriculture community devastated.
- Two deaths in southeast Florida from cars driving into canals.
- Floods in Haiti killed an estimated 1,122 people. Deaths also occurred in Dominican Republic, Jamaica, Cuba and Costa Rica.

# Gordon Tornadoes

- Six confirmed tornadoes.
- \$10.5 million in damage.
- One F2, two F1 tornadoes.
- Worst damage in Southern Brevard County (Micco/Barefoot Bay). 1 death and 40 injuries. 62 mobile homes destroyed, 46 major damage, 181 minor damage.

# Gordon Marine Impacts

- 508-foot Turkish cargo vessel dragged anchor and ran aground less than 50 yards from Ft. Lauderdale Beach.
- 37 people rescued from sinking vessels.
- Rip currents days after storm killed one person.
- Moderate to locally severe beach erosion at Florida east coast beaches. A few buildings undermined.
- Storm surge of 2 feet at Miami Beach.



# Lessons Learned

- Tropical Storms can and are often just as deadly as hurricanes.
- Any tropical cyclone can produce multiple hazards. Wind isn't the only significant hazard to pay attention to.