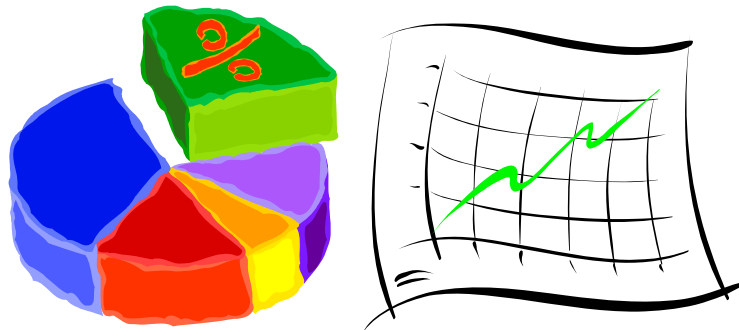




MID SUSSEX
DISTRICT COUNCIL

MID SUSSEX

FACTS AND FIGURES



Updated September 2005

**Planning Policy Department
Oaklands
Oaklands Road
Haywards Heath
West Sussex
RH16 1SS**

Mid Sussex Facts and Figures

Mid Sussex Facts and Figures

This document details a variety of statistics with brief commentary for the Mid Sussex District. The document is divided into the following sections:

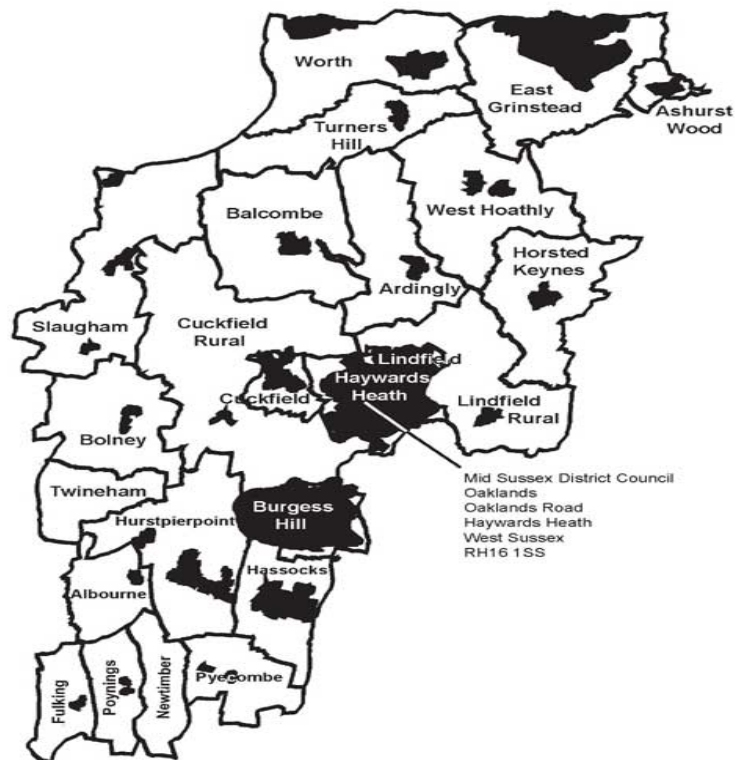
- Population
- The Economy
- Households
- Education

Please note that travel to work information is available for the three main towns either in the main Travel to Work Information document or their respective Facts and Figures documents.

1.0 Introduction

The Mid Sussex District is characterised by a number of towns and villages located within an extensive area of very attractive countryside. The majority of the population lives in these towns and villages. The larger centres have expanded considerably in recent years with the addition of new housing estates and in some cases large commercial developments. Some growth has also occurred in the villages and in a few cases new residential developments have significantly increased their size.

The Mid Sussex District by Town and Parishes



This map is for the purpose of illustrating the area covered by Mid Sussex District Council.
Reproduced from the Ordnance Survey mapping with the permission of the Controller of Her Majesty's Stationery Office. CROWN COPYRIGHT.
Unauthorised reproduction infringes Crown Copyright and may lead to prosecution or civil proceedings. Mid Sussex District Council. 100021794. 2004

2.0 Population

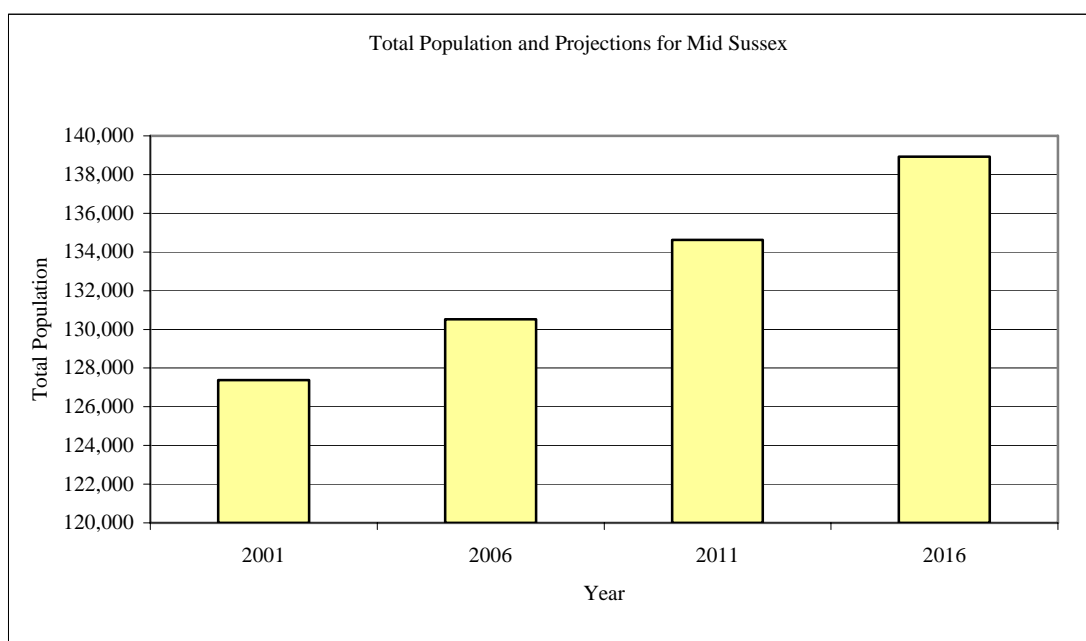
2.1 Total population by settlement and sex

Area	Population	Males	Females
Albourne	600	298	302
Ardingly	1833	936	897
Ashurst Wood	1771	896	875
Balcombe	1765	850	915
Bolney	1209	592	617
Burgess Hill	28803	13981	14822
Cuckfield	3266	1570	1696
Cuckfield Rural	1574	802	772
East Grinstead	23942	11546	12396
Fulking	250	122	128
Hassocks	6821	3163	3658
Haywards Heath	22800	10918	11882
Horsted Keynes	1507	724	783
Hurstpierpoint and Sayers Common	6264	3020	3244
Lindfield	5394	2500	2894
Lindfield Rural	2644	1287	1357
Newtimber	93	53	40
Poynings	287	138	149
Pyecombe	200	97	103
Slaugham	2226	1116	1110
Turners Hill	1849	1057	792
Twineham	271	134	137
West Hoathly	2121	1042	1079
Worth	9888	4866	5022
Total	127378	61708	65670

Source: 2001 Census

- Almost 60% of Mid Sussex's population lives in the three main towns of Burgess Hill, East Grinstead and Haywards Heath.

2.2 Total Population and Projections for Mid Sussex 2001 – 2016



Source: 2001 Census and 2001 West Sussex County Council Forecasts

- The population of Mid Sussex grew by 2.3% over the ten-year period between 1991 and 2001. The population is expected to increase by 5.7% over the ten-year period from 2001-2011.
- The combined population of the three main towns (Burgess Hill, East Grinstead and Haywards Heath) is expected to increase by 7.1% over the ten-year period 2001-2011.
- It is projected that Haywards Heath will experience the most rapid population expansion between 2001-2011, with an increase of 13.2%.
- It is projected that between 2001-2011, the population of West Sussex will increase by about 4%.

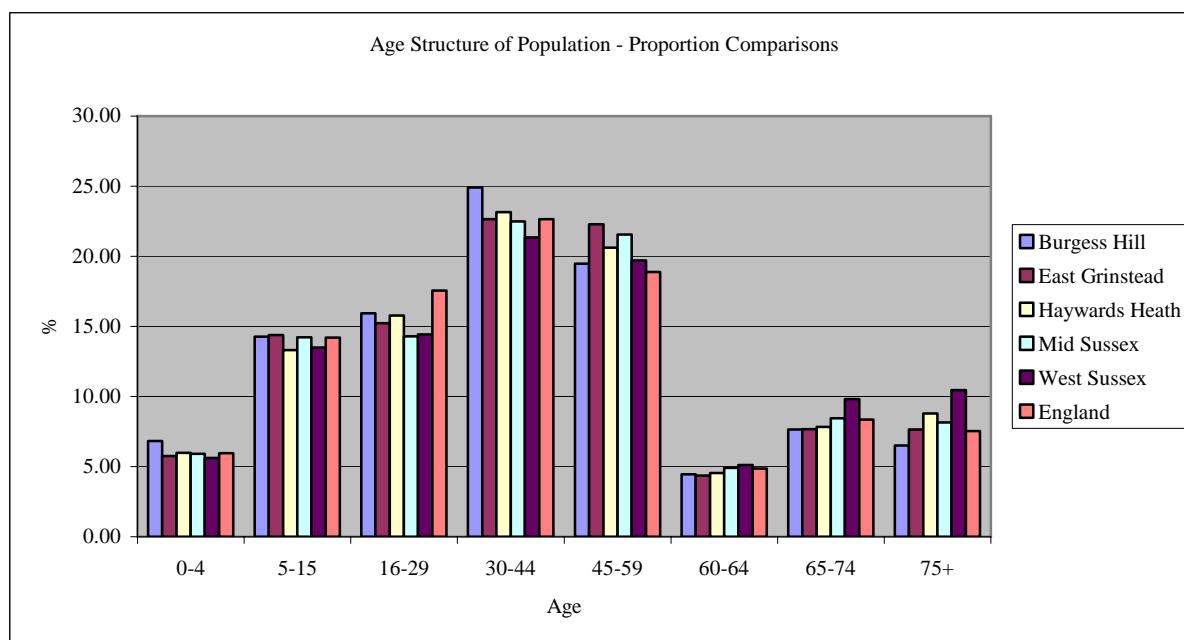
2.3 Total Population and Projections 1991-2016

Area	Census		Estimates and Projections		
	1991	2001	2006	2011	2016
Burgess Hill	25,785	28,803	28,650	28,880	28,840
East Grinstead	25,870	23,942*	26,045	26,175	26,275
Haywards Heath	22,725	22,800	25,545	25,820	25,915
Mid Sussex	124,490	127,378	130,525	134,620	138,920
West Sussex	714,420	764,205	780,225	794,460	806,920

* 2001 figure excludes Ashurstwood Parish which was included in the 1991 figure. Ashurstwood became separate Parish Council in April 2000.

Source: 1991 Census / 2001 Census / 2001 West Sussex County Council Forecasts

2.4 Age structure of the Mid Sussex population



Source: 2001 Census

- The structure of the district's population generally mirrors that of England's although there is a lower percentage of people in Mid Sussex in the 16-29 age bracket and a higher percentage of people in the 45-59 group.
- Mid Sussex's age structure generally matches West Sussex's for the 0-4, 5-15 and the 16-29 brackets. There are a higher percentage of people in Mid Sussex in the 30-44 and the 45-59 age brackets than West Sussex. West Sussex has a higher percentage of people in the 60-64, 65-74 and the 75+ age brackets.

2.5 Age structure of the Mid Sussex population – Table of Figures

Area	0-4	5-15	16-29	30-44	45-59	60-64	65-74	75+
Burgess Hill	1963	4110	4588	7172	5607	1285	2204	1874
East Grinstead	1379	3446	3644	5421	5334	1046	1839	1833
Haywards Heath	1365	3033	3598	5277	4700	1036	1787	2004
Mid Sussex	7534	18114	18213	28660	27462	6239	10764	10392
West Sussex	42351	101770	108760	160919	148423	38566	74026	78799
England	2926238	6975343	8630216	11127511	9279693	2391830	4102841	3705159

Source: 2001 Census

2.6 Age structure of the Mid Sussex population – Table of Figures (Percentages)

Area	0-4	5-15	16-29	30-44	45-59	60-64	65-74	75+
Mid Sussex	5.91%	14.22%	14.30%	22.50%	21.56%	4.90%	8.45%	8.16%
Burgess Hill	6.82%	14.27%	15.93%	24.90%	19.47%	4.46%	7.65%	6.51%
East Grinstead	5.76%	14.39%	15.22%	22.64%	22.28%	4.37%	7.68%	7.66%
Haywards Heath	5.99%	13.30%	15.78%	23.14%	20.61%	4.54%	7.84%	8.79%

Source: 2001 Census

2.7 Ethnic Origin of the Mid Sussex population – Table of Figures

	White	Mixed	Asian or Asian British	Black or Black British	Chinese or Other Ethnic Group
Burgess Hill	28014	260	291	58	181
East Grinstead	22334	213	216	48	117
Haywards Heath	21938	249	295	111	208
Mid Sussex	124003	1146	1128	340	765
West Sussex	728031	6323	12511	2771	3978
South East	7608989	85779	186615	56914	62348
England	44679361	643373	2248289	1132508	435300

Source: 2001 Census

2.8 Ethnic Origin of the Mid Sussex population – Table of Figures (Percentages)

	White	Mixed	Asian or Asian British	Black or Black British	Chinese or Other Ethnic Group
Burgess Hill	97.3%	0.9%	1.0%	0.2%	0.6%
East Grinstead	97.4%	0.9%	0.9%	0.2%	0.5%
Haywards Heath	96.2%	1.1%	1.3%	0.5%	0.9%
Mid Sussex	97.3%	0.9%	0.9%	0.3%	0.6%
West Sussex	96.6%	0.8%	1.7%	0.4%	0.5%
South East	95.1%	1.1%	2.3%	0.7%	0.8%
England	90.9%	1.3%	4.6%	2.3%	0.9%

Source: 2001 Census

3.0 The Economy

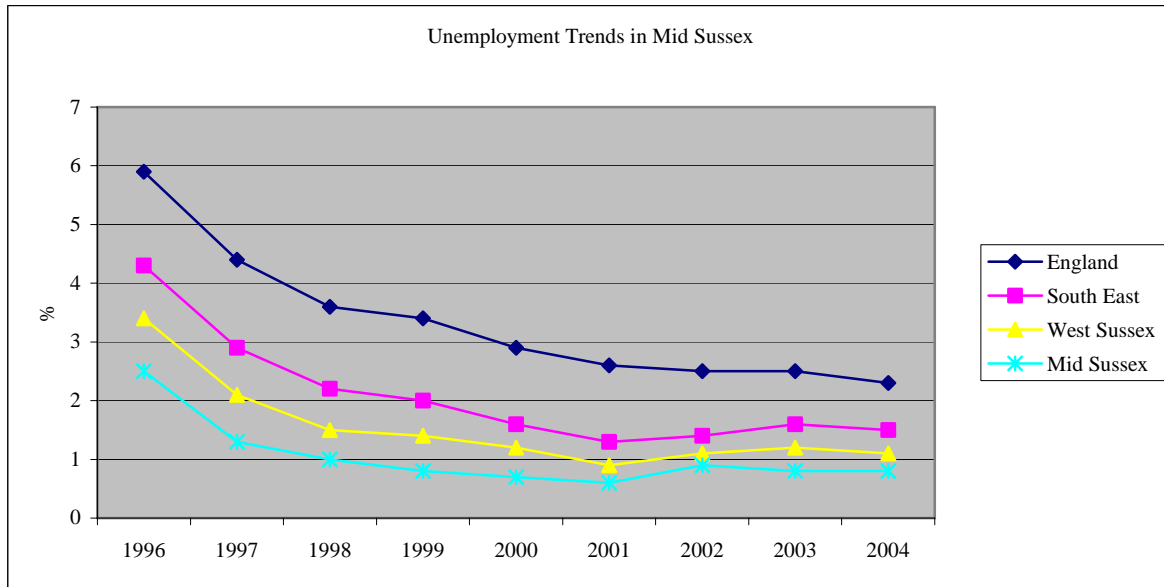
3.1 Introduction

Mid Sussex has traditionally enjoyed a healthy and prosperous local economy, and in common with other parts of Central Sussex has experienced considerable economic growth over the last 20-30 years. Its location at the heart of a large regional market with excellent transport links by road, rail, sea and air, an outstanding physical environment and a skilled local workforce have all been significant factors in attracting business development and economic investment over this period.

Along with the remainder of the region, the performance of the District's economy has been subject to periodic variations in recent decades. However, the local economy has remained relatively resilient when compared to the rest of West Sussex, the southeast region and the UK as a whole. For example, unemployment has remained well below the regional and national averages throughout this period. This trend has continued into the new century, with the overall health of the economy reflected by unemployment levels amongst the lowest in the country. This resilience and relative health makes Mid Sussex one of the most attractive locations for new business development. The economy of Mid Sussex is particularly diverse with a wide range of businesses engaged in a variety of activities. There are around 40 companies with over 100 employees, and a number of important companies have established their national or regional headquarters in the District. However, in common with the rest of Sussex the great majority of businesses are small or medium sized, employing fewer than 25 people.

In terms of employment, the service sector is predominant within the District. However, there are significant local variations. For example, in Burgess Hill approximately one third of employment is in manufacturing, whereas in Haywards Heath the service sector clearly predominates. The economies of the three main towns are generally complementary, with an emphasis on general and, increasingly, 'high tech' industries in Burgess Hill, offices in Haywards Heath, and a more even spread in East Grinstead. This diversity and the absence of any reliance on the fortunes of a few large companies is a particular strength, which has contributed to the overall resilience of the local economy during wider economic downturns. Mid Sussex is also fortunate in possessing a number of companies in potential growth sectors in the economy including electronics, engineering, science based industry, commercial and financial services and travel and tourism. There is also a high quality labour force with a range of skills and a history of good labour relations.

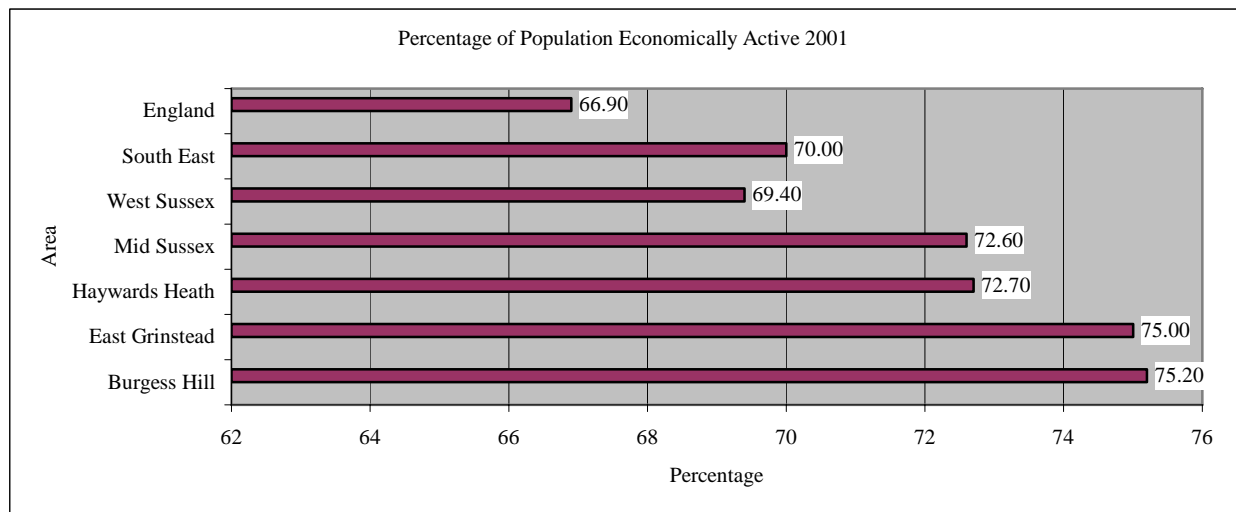
3.2 Unemployment trends for Mid Sussex 1996 - 2004



Source: NOMIS – Labour Market Statistics
(Figures are for the month of May for each year)

- The above table details the percentage of claimants against the total workforce population for each year. The trend of unemployment in Mid Sussex has generally mirrored both national and regional trends of sustained falling unemployment levels. During the period from 1996 up until 2004, the Mid Sussex District has consistently had a lower unemployment rate than both national and regional levels.

3.3 Economically Active

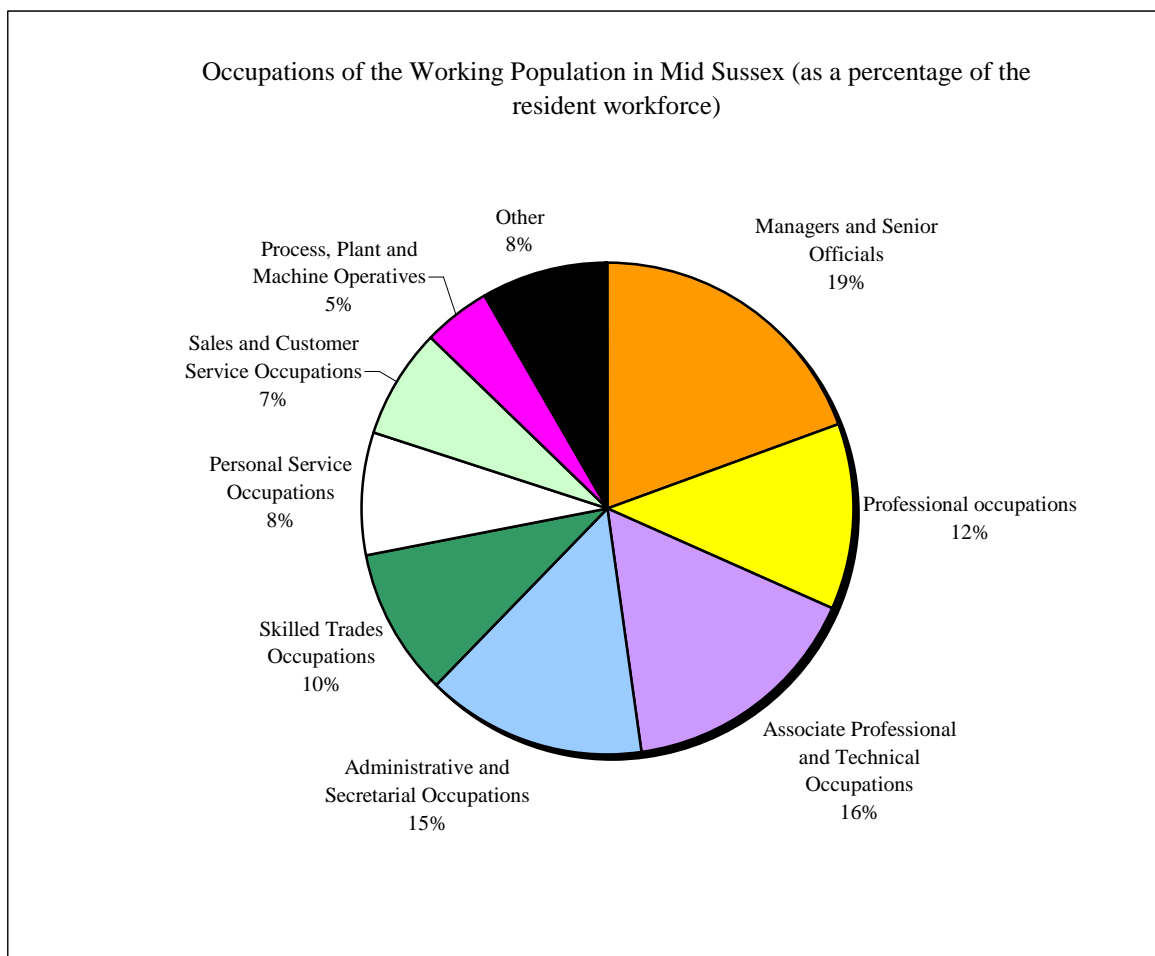


Source: 2001 Census

Note: Economic activity - applies only to people aged 16 to 74. It relates to whether or not a person was working or looking for work in the week before the Census. The concept of Economic Activity is compatible with the International Labour Organisation (ILO) definition of economic status. All people who were working in the week before the Census are described as economically active. In addition, the category includes people who were not working but were looking for work and were available to start work within 2 weeks. (Source: Office for National Statistics)

- Mid Sussex has a higher percentage of economically active people than West Sussex, the South East and England.

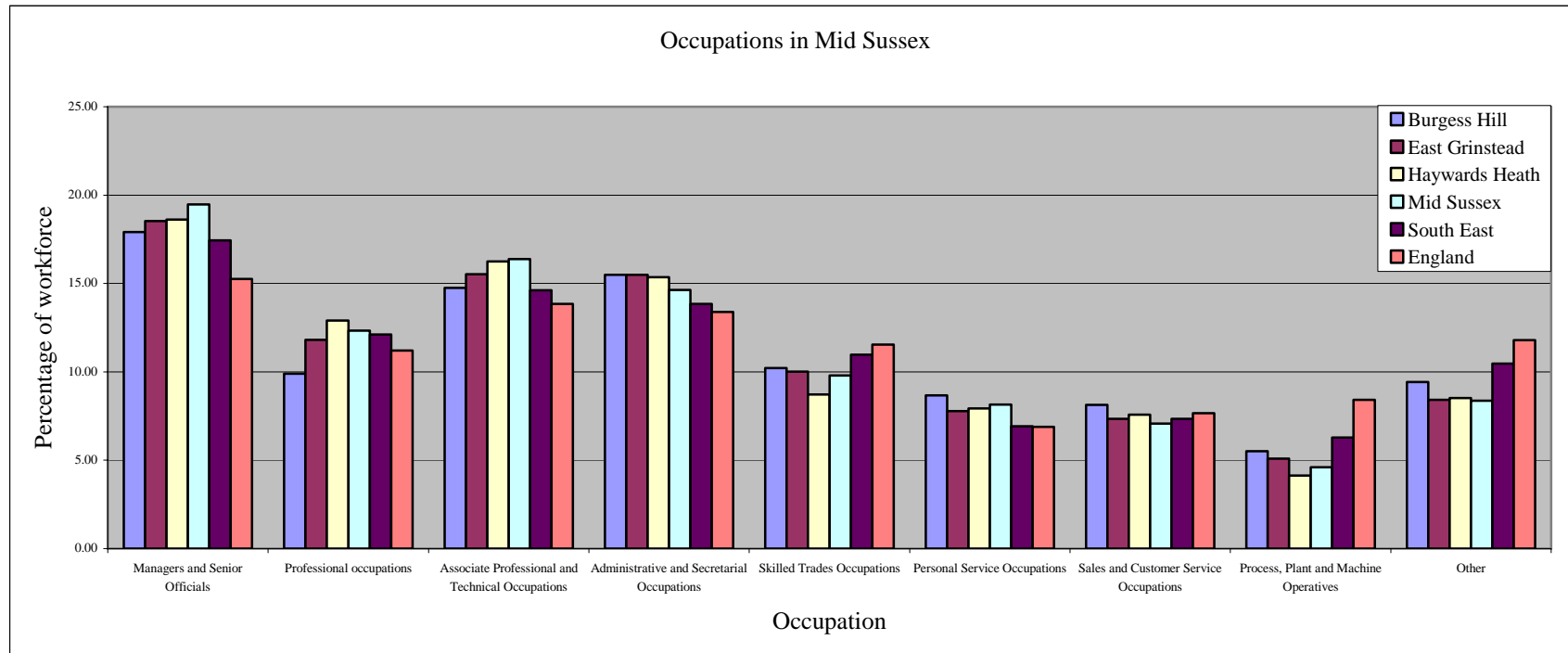
3.4 Occupations of the Working Population in Mid Sussex



Source: 2001 Census

- A high percentage of the Mid Sussex population are employed as managers and senior officials (19%), associate professional and technical occupations (16%) and administrative and secretarial occupations (15%).

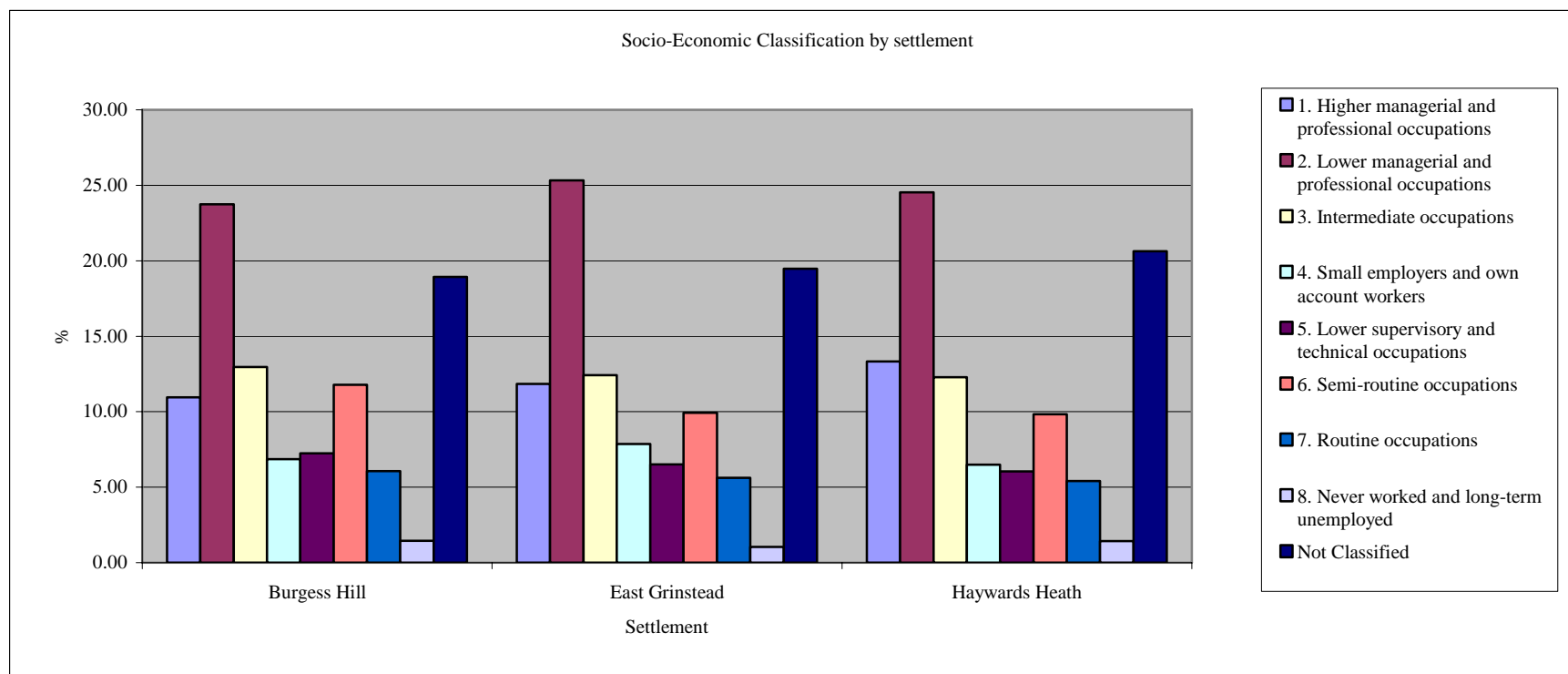
3.5 Occupations in Mid Sussex



Source: 2001 Census

- Compared with the regional level (Southeast), Mid Sussex has a higher percentage of Managers and Senior Officials, Professional Occupations, Associate Professional and Technical Occupations, Administrative and Secretarial Occupations and Personal Service Occupations. Mid Sussex has a lower percentage of Skilled Trader Occupations, Sales and Customer Service Occupation and Process, Plant and Machine Operatives.

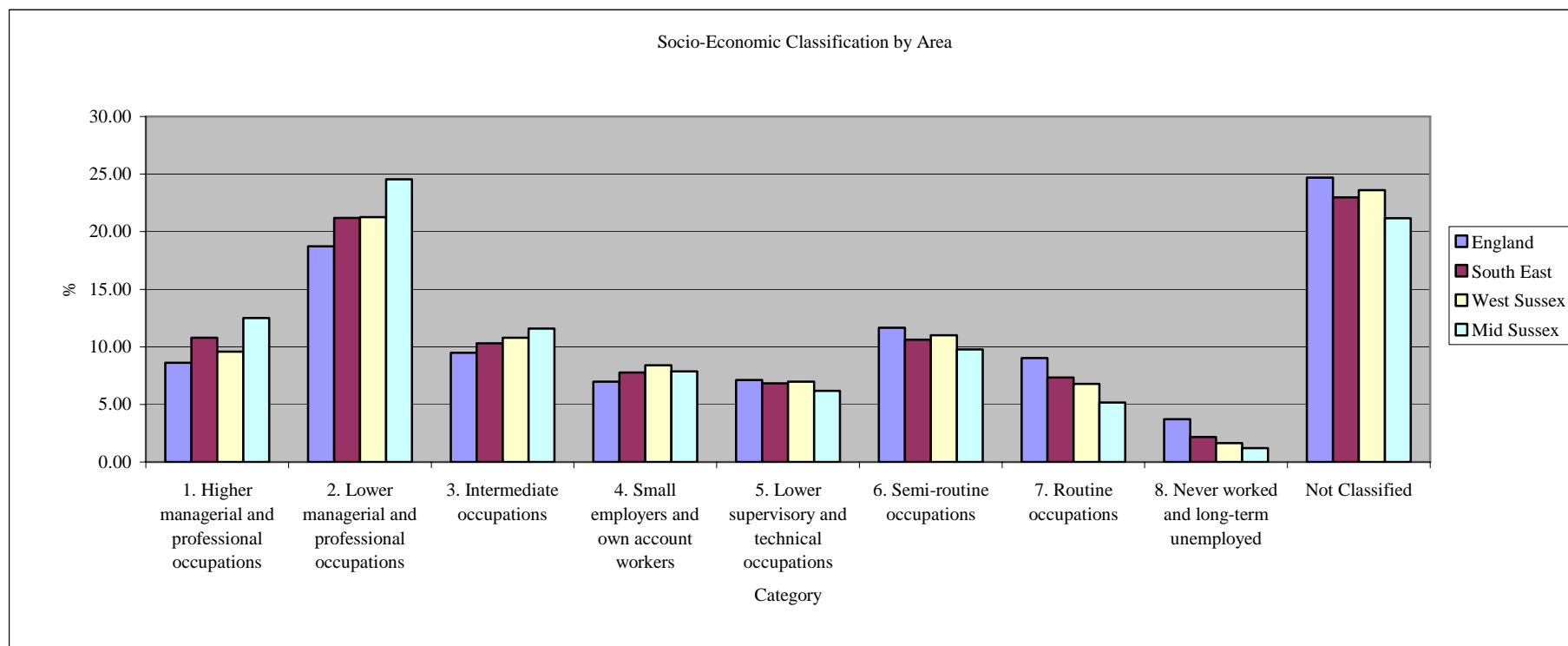
3.6 Socio – Economic Classification by Settlement



Source: 2001 Census

Note: The National Statistics Socio-economic Classification - From 2001 the National Statistics Socio-economic Classification (NS-SEC) will be used for all official statistics and surveys. It will replace Social Class based on Occupation (SC, formerly Registrar General's Social Class) and Socio-economic Groups (SEG). This change has been agreed by the National Statistician following a major review of government social classifications commissioned in 1994 by the Office of Population Censuses and Surveys (now the Office for National Statistics) and carried out by the Economic and Social Research Council. The NS-SEC is an occupationally based classification but has rules to provide coverage of the whole adult population. The information required to create the NS-SEC is occupation coded to the unit groups (OUG) of the Standard Occupational Classification 2000 (SOC2000) and details of employment status (whether an employer, self-employed or employee; whether a supervisor; number of employees at the workplace). Similar information was previously required for SC and SEG. (Source: Office for National Statistics).

3.7 Socio – Economic Classification by Area

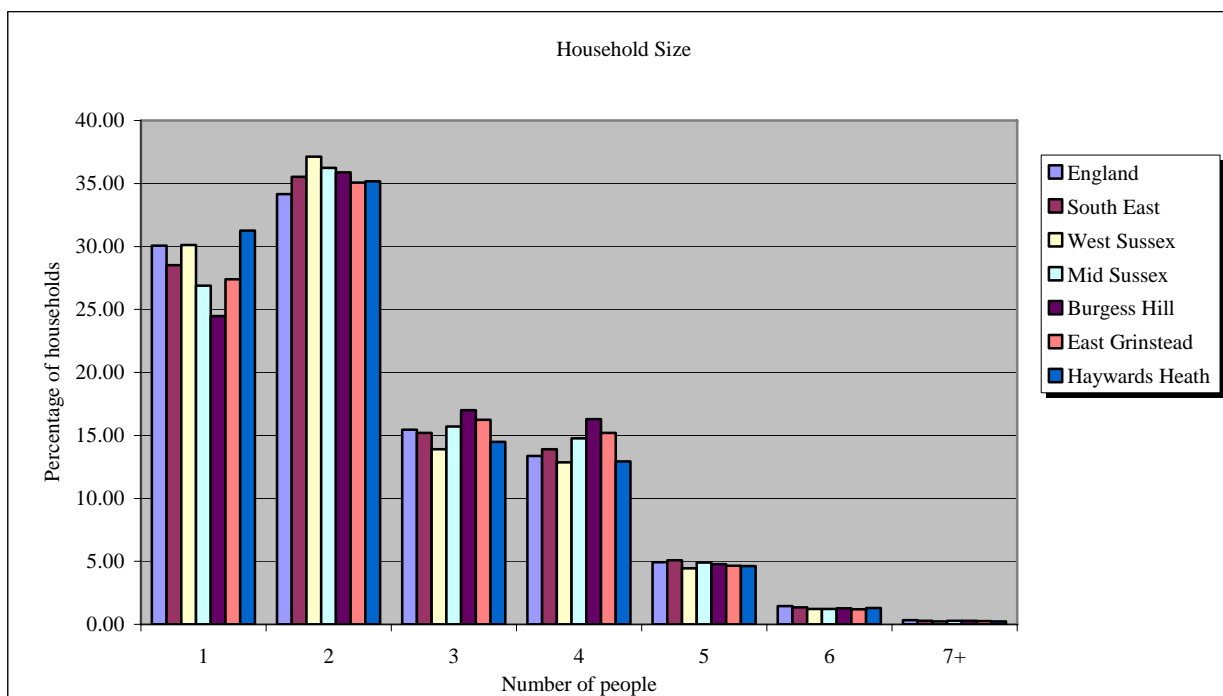


Source: 2001 Census

Note: The National Statistics Socio-economic Classification - From 2001 the National Statistics Socio-economic Classification (NS-SEC) will be used for all official statistics and surveys. It will replace Social Class based on Occupation (SC, formerly Registrar General's Social Class) and Socio-economic Groups (SEG). This change has been agreed by the National Statistician following a major review of government social classifications commissioned in 1994 by the Office of Population Censuses and Surveys (now the Office for National Statistics) and carried out by the Economic and Social Research Council. The NS-SEC is an occupationally based classification but has rules to provide coverage of the whole adult population. The information required to create the NS-SEC is occupation coded to the unit groups (OUG) of the Standard Occupational Classification 2000 (SOC2000) and details of employment status (whether an employer, self-employed or employee; whether a supervisor; number of employees at the workplace). Similar information was previously required for SC and SEG. (Source: Office for National Statistics).

4 Households

4.1 Number of Persons per Household

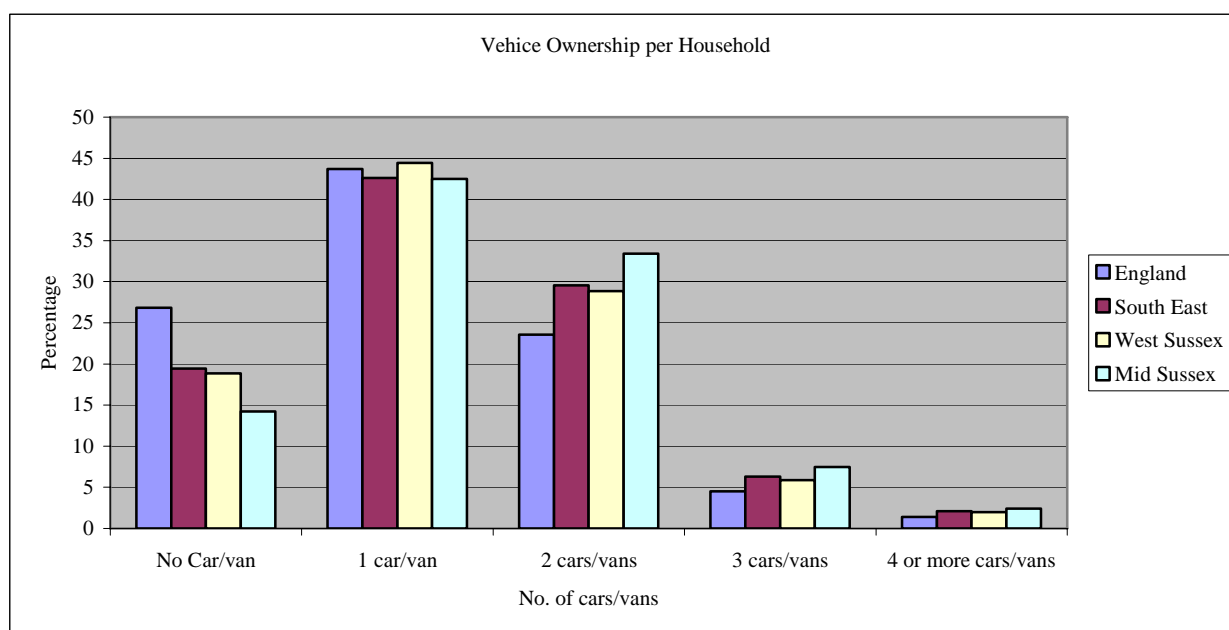


- Mid Sussex has a lower proportion of single person households than the national level but a higher proportion of 2, 3, 4 and 5 person households.

4.2 Number of Persons per Household – Table of figures

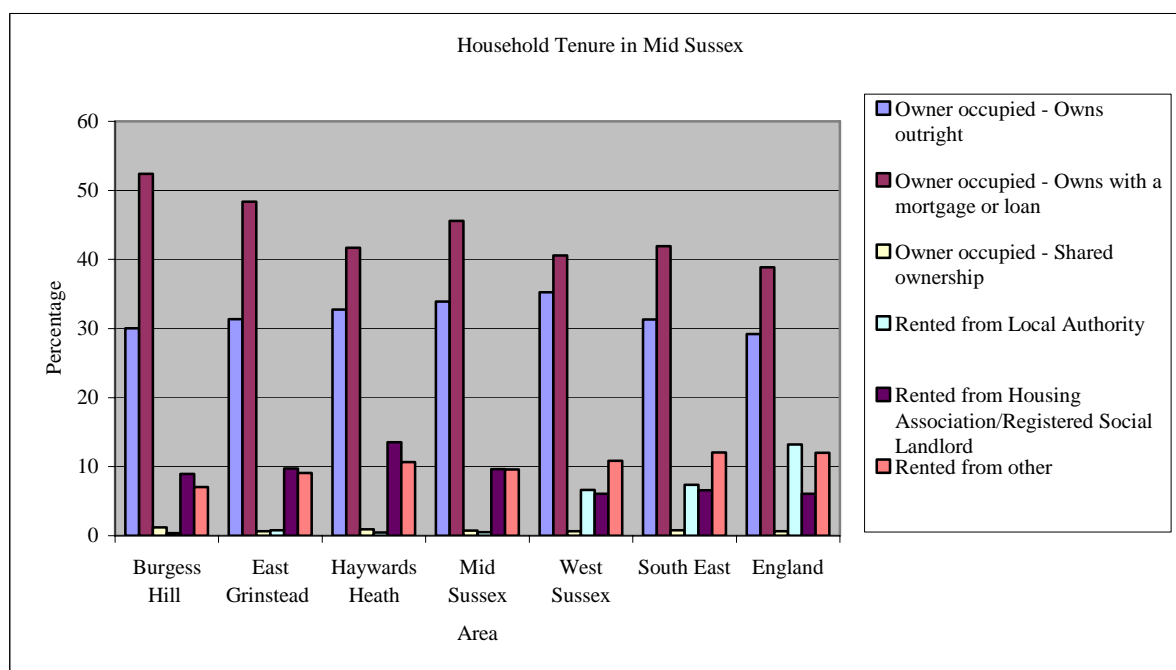
Area	All occupied household spaces	1 Person	2 Persons	3 Persons	4 Persons	5 Persons	6 Persons	7+ Persons
England	20451427	6150264	6985981	3161192	2732975	1008873	297933	69731
South East	3287489	937468	1167958	499191	456875	167294	44168	9594
West Sussex	320915	96617	119111	44634	41259	14298	3885	773
Mid Sussex	51969	13970	18838	8166	7677	2548	630	140
Burgess Hill	11545	2824	4144	1964	1880	553	148	32
East Grinstead	9458	2590	3316	1537	1438	441	113	23
Haywards Heath	9783	3057	3442	1418	1265	452	126	23

4.3 Vehicle Ownership per Household



- Mid Sussex has a lower proportion of households without a car/van than national and regional levels.
- Mid Sussex has a higher proportion of households with 2,3 and 4 or more cars/vans than national and regional levels.

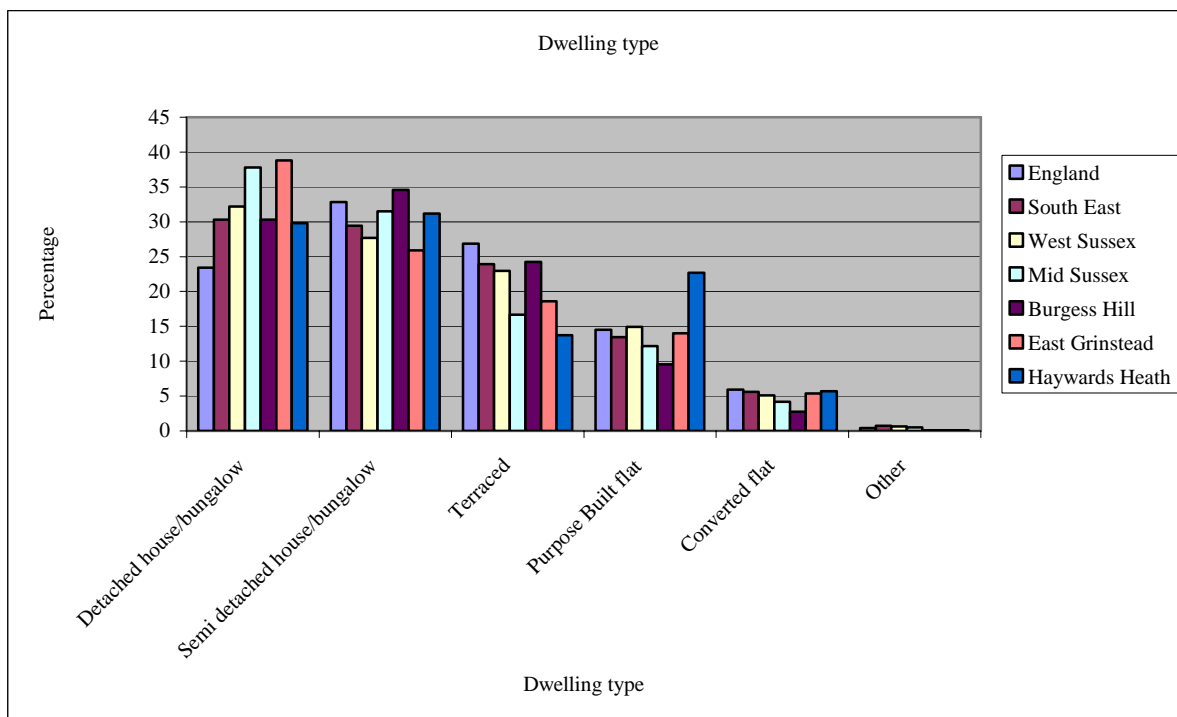
4.4 Household Tenure in Mid Sussex



Source: 2001 Census

- Just over 80% of all households in Mid Sussex are owner occupied compared to the national average of 69%.

4.5 Dwelling type

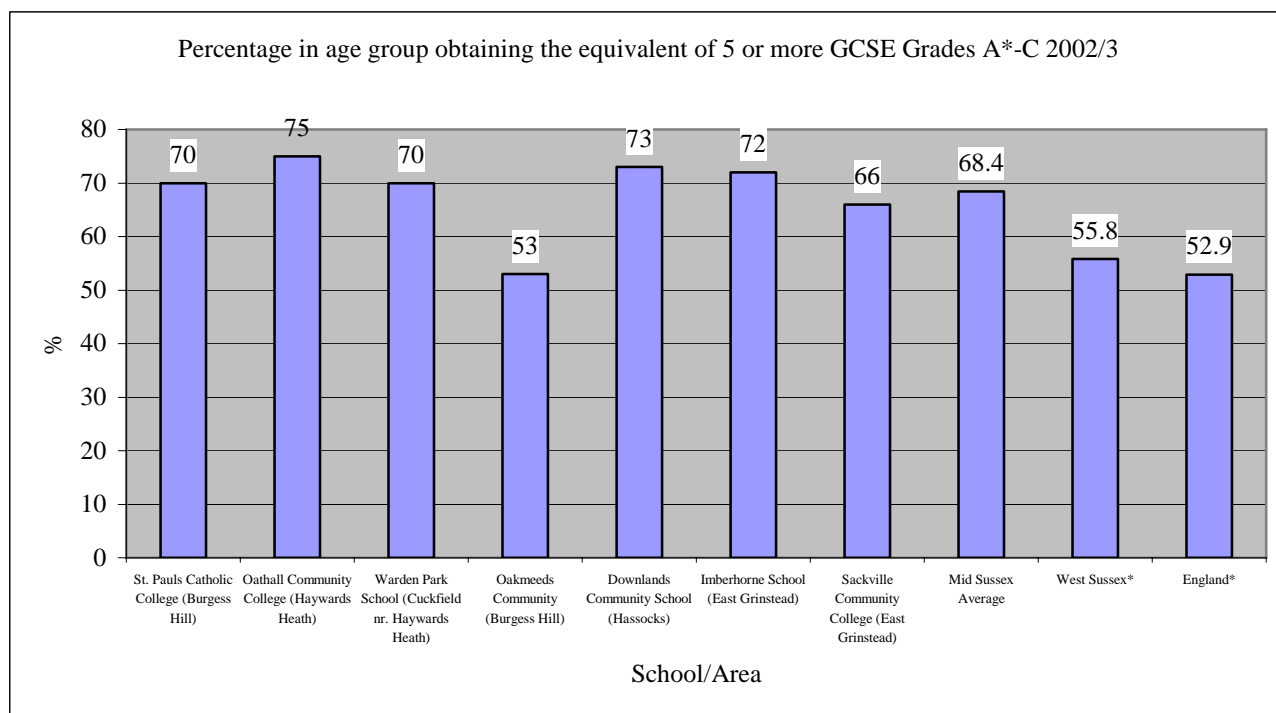


Source: 2001 Census

- Mid Sussex has a higher percentage of detached dwellings than national and regional levels.
- Mid Sussex has a lower percentage of semi-detached dwellings than the national level but a higher percentage than the South East and West Sussex levels.
- Mid Sussex has a lower percentage of terraced, purpose built flats and converted flats than national and regional levels.

5 – Education

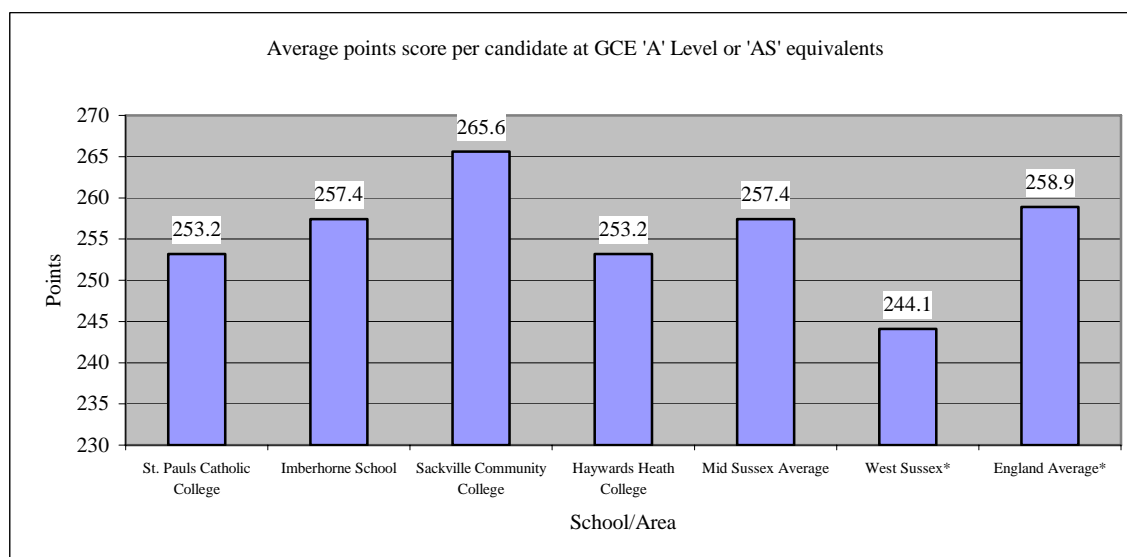
5.1 – GCSE Results for pupils aged 15 at start of the school year 2002 – 2003



*Includes both independent and non-independent schools

- The proportion of pupils from schools in Mid Sussex achieving 5 or more GCSE's at grades A* - C is well above the average for both West Sussex and England.

5.2 – Results for students aged 16,17,18 at start of school year 2002-2003



*Includes both independent and non-independent schools

- The Mid Sussex average is well above that of West Sussex but 1.5 points below the England average.

5.3 – Highest level of qualification achieved



Notes:

Highest Level of Qualification

In England and Wales, the highest level of qualification is derived from responses to both the qualifications question and the professional qualification question, which is summarised below:

No Qualifications: No academic, vocational or professional qualifications.

Level 1: 1+ 'O' level passes, 1+CSE/GCSE any grades, NVQ level 1, Foundation GNVQ

Level 2: 5+ 'O' level passes, 5+CSEs (grade 1), 5+GCSEs (grades A-C), School Certificate, 1+ 'A' levels/AS levels, NVQ level 2, Intermediate GNVQ

Level 3: 2+ 'A' levels, 4+AS levels, Higher School certificate, NVQ level 3, Advanced GNVQ

Level 4/5: First degree, Higher degree, NVQ levels 4 and 5, HNC, HND, Qualified Teacher status, Qualified Medical Doctor, Qualified Dentist, Qualified Nurse, Midwife, Health Visitor

Other qualifications/level unknown: Other qualifications (e.g. City and Guilds, RSA/OCR, BTEC/Edexcel), Other Professional Qualifications.

Please check Mid Sussex Website (<http://www.midsussex.gov.uk/>) for regular updates of statistics and information.

Useful links



<http://www.statistics.gov.uk>

Official statistics reflecting Britain's economy, population and society at national and local level. Summary stories and detailed data releases are published here free of charge.

<http://www.nomisweb.co.uk>

Official Labour Market Statistics

<http://www.midsussex.gov.uk>

Mid Sussex District Council Website

<http://www.westsussex.gov.uk>

West Sussex County Council website
