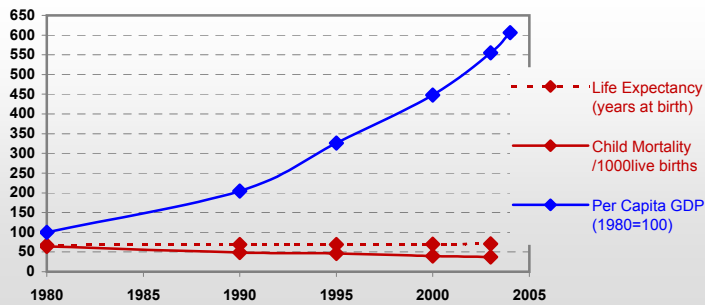


China



General / Welfare

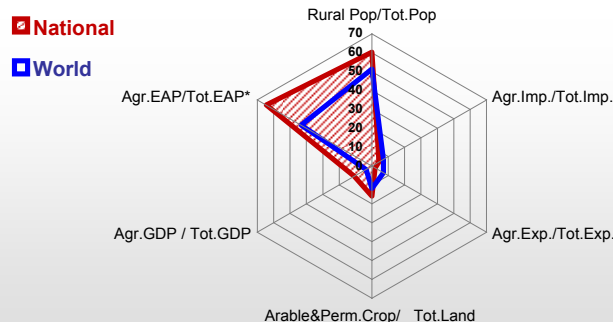
Population ^{04 *}	1 320 892
Per Capita GDP ^{04 **}	1 441
Agricultural GDP/Ag.Population ^{04**}	241
Total Exports ^{04 ****}	1 003 665
Total Imports ^{04 ****}	1 029 406
Agric. External Assistance ^{03 ***}	810 147
Food Consumption Inequality (G) ^{ly}	0.18
Income Inequality (G) ^{ly}	0.45
Land Inequality (G) ^{ly}	-
Undernourished Population % ⁰¹⁻⁰³	12



* 1000 ** \$ *** 1000 \$ **** Million \$ --- (G) : Gini Coefficient --- GDP at 2000 Constant Prices

Agriculture In The Economy^{ly}

Resources

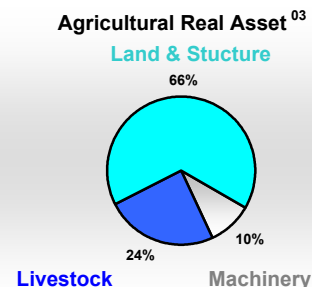
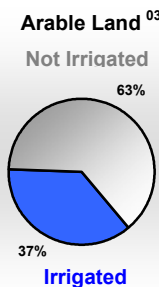
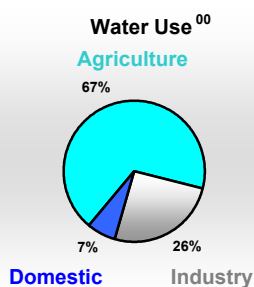
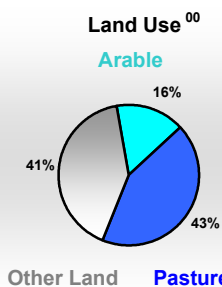


Arable Land ^{00 *}	137 124
Permanent Crops ^{00 *}	11 533
Pasture ^{00 *}	400 001
Cattle & Buffaloes ^{04 **}	134 824
Sheeps & Goats ^{04 **}	340 693
Tractors ^{03 / *}	7
Harvesters&Threshers ^{03 / *}	3
Fertilizers Production ^{02 ***}	31 986 707
Fertilizers Consumption ^{02 ***}	39 604 666
Rainfall Index ^{02 (mm)}	1 119

* EAP : Economically Active Population ---

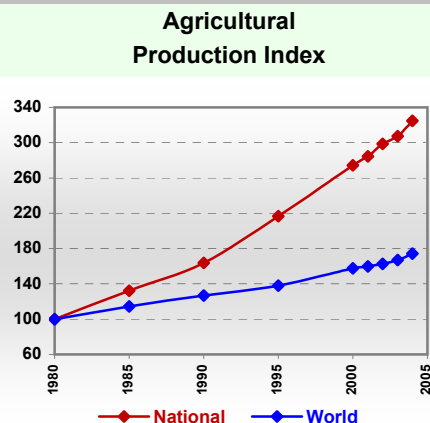
* 1000ha ** 1000heads *** Tonnes N,P₂O₅,K₂O

Resources Distribution



Production

Agriculture ^{04 *}		Forestry ⁰⁴	
Cereals	413 166	Indust.Roundwood **	95 061
Meat	74 306	Wood Fuel **	191 044
Fruits & Vegetables	506 634	Wood Charcoal *	122
Roots & Tubers	288 694	Sawn Wood **	12 211
Pulses	9 563	Wood Based Panels **	44 914
Oilseeds (oil equiv.)	22 967	Wood Pulp *	4 080
Sugar Crops	118 334	Paper, Paper Board *	53 463
Milk	27 023	Fisheries^{04 *}	
Eggs	27 612	Pelagic	4 079
Stimulants	1 231	Freshwater	19 124
Tobacco	2 414	Demersal	4 651
Fiber Crops	7 450	Molluscs	11 694



* 1000Tonnes ** 1000m³

Time reference=⁹⁹⁻⁰¹:1999-2001, ⁰⁰:2000, ⁰²:2002, ⁰⁰⁻⁰²:2000-2002, ⁰³:2003, ⁰⁴:2004, ^{ly}:Latest Available Year

China

Trade ⁰⁴

Agricultural Imports *	41 688
% 4 Major Imports in Agr. Imp.	46
% Agr. Imports in Tot. Imports	4
Fishery Imports *	5 547
Forestry Imports *	19 492
Agricultural Exports *	20 827
% 4 Major Exports in Agr. Exp.	23
% Agr. Exports in Tot.Exports	2
Fishery Exports *	8 856
Forestry Exports *	5 199

* Million \$



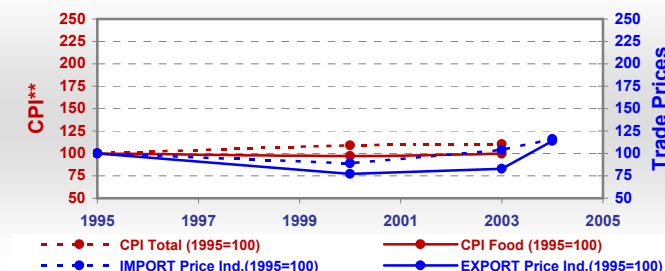
Trade Partners & Products

Major Import Partner	United States of A	Brazil	Australia
Major Exports Partner	Japan	United States of Am	Korea, Rep. of
Major Imports	Soybeans	Cotton lint	Oil, palm
Major Exports	Food prepared	Fruit products nes	Vegs pr nes

Prices

Producer Prices ⁰¹⁻⁰³	\$*	\$Green *
Wheat	127	168
Rice	145	191
Maize	112	148
Soybean	261	345
Coffee	874	1 154
Tobacco	977	1 290
Cow Milk	276	365
Cattle (Live Weight)	960	1 268
Pig (Live Weight)	781	1 032
Chicken (Live Weight)	518	684

Consumer and Agricultural Trade Price Indices

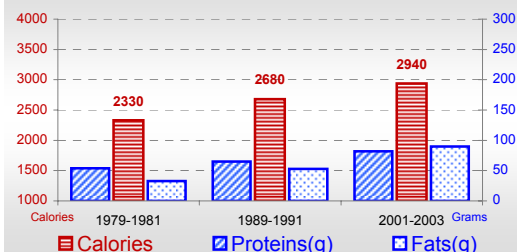


* per Tonne

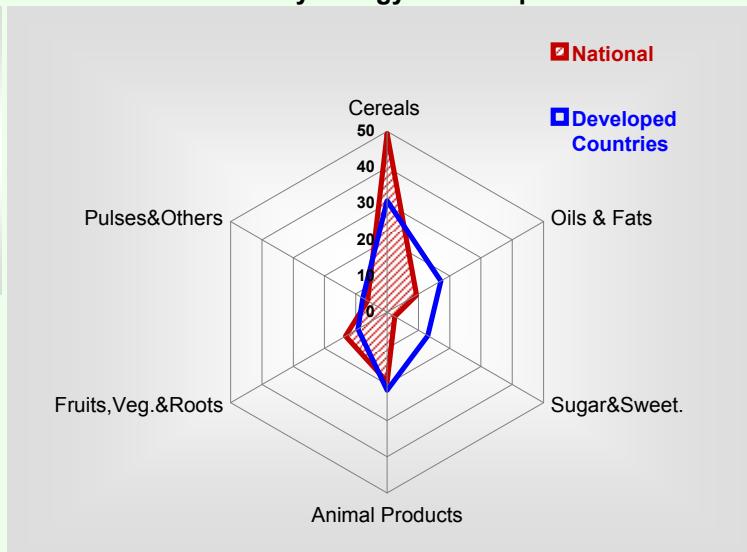
** CPI : Consumer Price Index

Consumption

Per Capita Daily Consumption



Source of Dietary Energy Consumption % ⁰¹⁻⁰³



Per Capita Daily Calorie Intake From Selected Food Items ⁰¹⁻⁰³

Rice	824
Wheat	488
Maize	116
Sorghum	8
Potatoes	66
Cassava	4
Sugar	66
Soybean Oil	89
Palm Oil	32
Milk	26
Anim.Fats(Raw&Butter)	45
Eggs	71
Pigmeat	333
Poultry Meat	50
Bovine Meat	26
Sheep & Goats Meat	14

Food Balance ^{01-03 (1000Tonnes)}

Food Groups	Production (+)	Exports (-)	Imports (+)	Stock changes & Other uses (-)	Consumption (=)
Cereals	334 013	15 969	10 485	112 286	216 242
Veg.oils	12 734	369	5 115	5 075	12 405
Sugar&Sw.	11 684	612	1 866	3 270	9 668
Roots&Tub.	184 819	1 036	10 271	96 792	97 263
Meat	68 064	1 670	2 330	30	68 693
Milk	17 907	376	2 139	1 891	17 778

Time reference=⁹⁹⁻⁰¹:1999-2001, ⁰⁰:2000, ⁰²:2002, ⁰⁰⁻⁰²:2000-2002, ⁰³:2003, ⁰⁴:2004, ^{ly}:Latest Available Year