

>> MERCURY INTERACTIVE QUICKTEST PROFESSIONAL

EASY, POWERFUL ENTERPRISE FUNCTIONAL TESTING

KEY FEATURES AND BENEFITS

Easy to Use

- Ensures immediate return on investment through ease of use. The synchronized ActiveScreen, Tree View, Expert View, Data Table and TestFusion reports ensure that minimal time and effort are required to build comprehensive data-driven test suites.
- Enables script maintainability via TestGuard technology.
- Provides a flexible object-management solution for updating multiple scripts through the Shared Object Repository, and automatic test recovery through Smart Object.

Powerful

- Enables thorough validation of applications through a full complement of checkpoints (object property, text, table, bitmap, HTML, XML, ODBC database and accessibility).
- Allows consistent, flexible parameterization of every object, method, checkpoint and output value in test script.
- Provides automation experts full control of underlying VBScript test code, through an integrated development environment (IDE) with IntelliSense, Object Spy, exception management, break points, expression watch, step in/out/over, update runs, flow control and more.
- Leverages investments in Mercury Interactive's other automated testing tools (i.e. WinRunner, TestDirector, Topaz and LoadRunner).

Enterprise-Wide Capability

- Supports functional testing of practically any environment, including Windows, Visual Basic, ActiveX and Java, enterprise applications, Web technologies, terminal emulators and emerging technologies (i.e. .Net and J2E Web services).
- Facilitates collaboration among testing groups enterprise-wide, with reusable test modules and function libraries.

Today's IT organizations are in a bind—expected to operate with limited resources and tight deadlines while implementing new technologies that improve business processes, reduce costs and always work flawlessly. Ensuring success requires thorough enterprise testing, including myriad test cases, mind-boggling permutations of operating systems and continual validation. And when software fails, the expense is high—from unproductive employees and unhappy customers to demoralized Quality Assurance (QA) teams.

QuickTest Professional provides the industry's best solution for functional and regression test automation for practically every software application and environment. The solution is part of Mercury Interactive's Optane suite—a comprehensive set of tools for testing and application performance management (APM) that provides the only integrated solution for business technology optimization (BTO).

With QuickTest Professional, companies benefit from ActiveScreen technology, which offers the shortest learning curve in the industry, and TestGuard technology's easy-to-maintain tests. However, test-automation experts still have full programmatic access to properties and methods for all objects in the application under test, via an integrated scripting and debugging environment.

QuickTest Professional is the only functional testing solution that satisfies the needs of both technical experts and business analysts, enabling

companies to deploy higher-quality applications faster and with reduced risks and cost.

With this product, QA organizations can achieve a number of advantages:

- Empower the entire QA team to create sophisticated test suites with minimal training.
- Rapidly isolate defects to meet production deadlines.
- Ensure correct functionality across all environments, data sets and business processes.
- Fully document and replicate defects for developers.
- Easily regression-test ever-changing applications and environments.
- Become key players in enabling the organization to deliver quality products and services, and improve revenues and profitability.

HOW QUICKTEST PROFESSIONAL WORKS

QuickTest Professional allows even novice testers to be productive in minutes. Users can create a test script by simply pressing a Record button and using an application to perform a typical business process. This produces an icon-based Tree View, in which each branch represents a step in the business process. Users can easily modify, remove or rearrange test steps in the Tree View.



QuickTest Professional integrates an ActiveScreen, Tree View and Data Table to enable point-and-click functional testing and the industry's shortest learning curve.



QuickTest Professional can automatically introduce checkpoints to verify application properties and functionality, for example to validate output or measure load times. For each step in the Tree View, there is an ActiveScreen showing exactly how the application under test looked at that step. Testers can also add several types of checkpoints for any object to verify that components behave as expected, simply by clicking on that object in the ActiveScreen.

Testers can then enter test data into the Data Table, an integrated spreadsheet with the full calculation power of Excel, to manipulate the data sets and quickly create multiple test iterations to expand test case coverage. Data can be typed in or imported from a production database, spreadsheet, or text file.

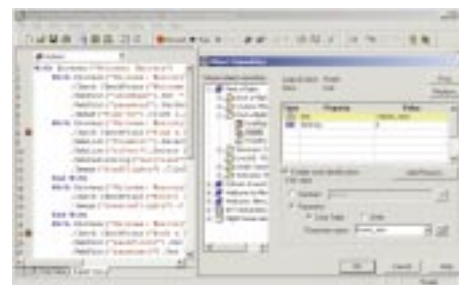
Advanced testers can view and edit their test scripts in the Expert View, which reveals the underlying industry-standard VBScript that QuickTest Professional automatically generates. Any changes made in the Expert View are automatically synchronized with the Tree View.

Once a tester has run a script, a TestFusion report displays all aspects of the test run: a high-level results overview; an expandable Tree View of the test script specifying exactly where application failures occurred; the test data used; application screen shots for every step that highlight any discrepancies; and detailed explanations of each checkpoint pass and failure. By combining TestFusion reports with Mercury Interactive's TestDirector, reports can be shared across an entire QA and development team.

QuickTest Professional also facilitates the update process. As an application under test changes, such as when a "Login" button is renamed "Sign In," testers can make one update to the Shared Object Repository, and the update will propagate to all scripts that reference this



TestFusion reports enable testers to understand all test-run information at a glance.



Expert View and Shared Object Repository provide expert users with full programmatic access to all objects in the application under test.

object. Over time, users can make their test scripts re-usable to other scripts and members of the QA team, eliminating duplicative work.

For more information on QuickTest Professional and a complete list of supported environments: www.mercuryinteractive.com/products/quicktestpro/.

ABOUT MERCURY INTERACTIVE

Mercury Interactive is the global leader in business technology optimization (BTO). Our Optane suite of testing, tuning and performance-management solutions enables companies to unlock the value of their Information Technology investments by optimizing business and technology performance to meet business requirements. With Mercury Interactive, customers can measure the quality of their IT-enabled business processes, maximize technology and business performance at every stage of the application lifecycle, and manage their IT operations for continuous optimization throughout the lifecycle. Our leading-edge BTO software and services are complemented by technologies and services from our global business partners, and are used by more than 30,000 customers—including 75 percent of *Fortune* 500 companies—to improve quality, reduce costs and align IT with business goals.

ENTERPRISE-WIDE ENVIRONMENT SUPPORT

QuickTest Professional supports practically any application in your company, whether built on the oldest or the newest technology.

Core Environments

- Windows applications (MFC)
- Visual Basic
- Java
- ActiveX

Enterprise Applications

- SAP
- Siebel
- PeopleSoft
- Oracle

Web Technologies

- HTML
- DHTML
- JavaScript

Browsers

- Internet Explorer
- Netscape
- AOL

Emerging Technologies

- .Net winforms, webforms, web services
- J2EE Web services
- XML, WSDL, UDDI

Terminal Emulators

- 3270
- 5250
- VT100

Server Technologies

- Oracle
- Microsoft
- IBM
- BEA
- ODBC
- COM / COM+

Multimedia

- Flash
- RealAudio/RealVideo
- Windows Media Player

ActiveTune, AstraFastTrack, LoadTest, TestCenter, Optane, ActiveTest, ActiveWatch, Astra, LoadRunner, Topaz, QuickTest, TestDirector, WinRunner, Mercury Interactive and the Mercury Interactive logo are trademarks of Mercury Interactive Corporation in the United States and/or select foreign countries. All other company, brand and product names are marks of their respective holders. © 2002 Mercury Interactive Corporation. Patents pending. All rights reserved. 2/03 PART # DS-0413-0203

