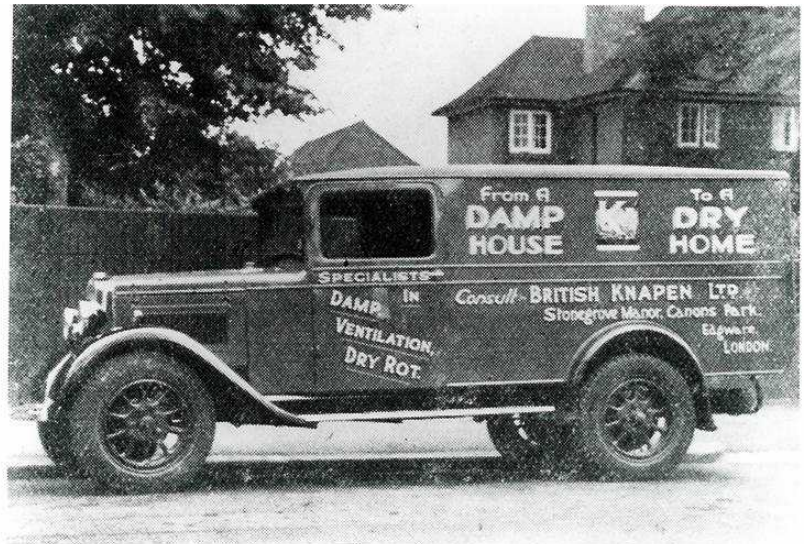




By Appointment  
to Her Majesty Queen Elizabeth II Damp  
Proofing and Timber Treatment Specialists  
ProTen Services Ltd., Bath

**ProTen**   
**S e r v i c e s**

## British Knapen - The Early Years



*Clockwise from top left: Professor Knapen (inventor of the Knapen Atmospheric Syphon), British Knapen surveyor's van, British Knapen's first print advertisement (July 6, 1928), and a technician treating church pews for woodworm*





By Appointment  
to Her Majesty Queen Elizabeth II  
Damp Proofing and Timber Treatment  
Specialists  
ProTen Services Ltd., Bath

**ProTen**   
Services

## From British Knapen to Protim Services

**BRITISH KNAPEN LIMITED**  
STONEGROVE MANOR - EDGWARE - MIDDLESEX  
TELEPHONE STONEGROVE 6272  
Contractors to the War Office, Admiralty, Air Ministry, Public and Ecclesiastical Bodies, Borough and County Councils

**DAMPNESS**  
KNAPEN ATMOSPHERIC SIPHONS, which are supplied exclusively to this Company for use in the United Kingdom, cure rising dampness without the necessity of underpinning. They are inserted at intervals in a horizontal zone along the base of a wall penetrating to half its thickness, but their radius of attraction covers the complete thickness of the wall. The system can be applied to all types of walling and any thickness of brickwork or masonry. The diagram shows siphons in position in a typical wall, the general appearance of a siphon as it is built into the wall, and the form of the small inconspicuous external vent which is fixed over the outer orifice. This vent can be in plaster, cement, brass, Delft metal or bronze in order to harmonize with the colour of the surroundings in which it is fixed.

**DRYING OUT**  
The evacuation of moisture by evaporation is accomplished by the movement of air into and out of the siphons. Dry air enters each siphon, passes along the fluted upper surface, absorbs the moisture which has been attracted from the wall by the siphon by reason of its extreme porosity and the passage of air through it and, becoming saturated and therefore colder and heavier, falls to the lower side of the siphon and passes outwards. The moisture thus evacuated, which is discharged before dew point is reached, is automatically replaced by a fresh supply of air. Each siphon will evacuate or evaporate continuously, but naturally the rate of evaporation varies considerably, and reaches its maximum when the atmosphere is dry. Inevitably, too, the length of time taken by the siphons to dry out a wall completely is controlled not only by atmospheric conditions, but by the nature and porosity of the materials of which the walls are composed, as well as the volume of moisture contained in them.

**APPLICATION**  
All installations are planned by our Technical Staff and carried out by our own trained Craftsmen. Once installed in a wall, unless there is any serious damage and provided the siphons and the vents are kept clear of any obstructions, they operate so long as the wall exists, arresting and eradicating dampness that reaches its sphere of action from whatever source. It is worthy to note that the Knapen Systems do not cost one penny for upkeep after installation.

**NATURAL VENTILATION**  
Lateral circulation of air through rooms or buildings, as produced in the Knapen System, by bringing two columns of air into contact through aperture in the walls so placed that the movement of air induced by the contact takes place all over the room and not merely between two fixed points. The functioning of the system is based upon the fact that, although it requires a difference of around 16° Centigrade between two vertical columns of air noticeably to disturb the atmosphere, a difference of only 0.5° Centigrade in temperature between two columns of air is sufficient to induce lateral movement. Lateral movement in brief, being combined with a very slow upward and downward movement which is smooth and constant so that no draughts are created. We shall be pleased to advise and assist on any problems where lack of ventilation needs to be remedied.

**DRY ROT**  
As dampness is the cause of extensive flourishing of dry rot, it will be seen that the Knapen cure offers a first line of defence in this sphere and because the cure is closely allied with the other we have a trained staff, well versed by research and long practice to deal with all outbreaks of dry rot. We shall welcome your enquiries on any problems and shall always be ready to give expert opinion.

**DETAIL OF KNAPEN ATMOSPHERIC SIPHON**  
Length varies according to thickness of wall  
In Brickwork  
In Masonry  
In Concrete

Stonegrove Manor, Edgware, Queen Anne Period House.  
The Show House of British Knapen Ltd.

The genuine Knapen Siphon, manufactured on the Continent, is solely supplied to British Knapen for use in Great Britain and N. Ireland

Sfb Du3  
UDC 699.87

**British Knapen Gallwey Ltd.**  
Dry Rot and Woodworm Eradication Service

USE **NEW**

**Protim**  
WOOD PRESERVATIVE

• Old Protim was Best—  
New Protim is even Better!

• Made by a new distillation process

• Highly insecticidal and fungicidal

• Hardly smells during application—leaves no smell after treatment

• Lasts much longer than ordinary wood preservatives

• 20 Years Guarantee backed by 41 years of experience

Head Office: Fieldhouse Lane, Marlow, Bucks. Telephone: Marlow 4422-9



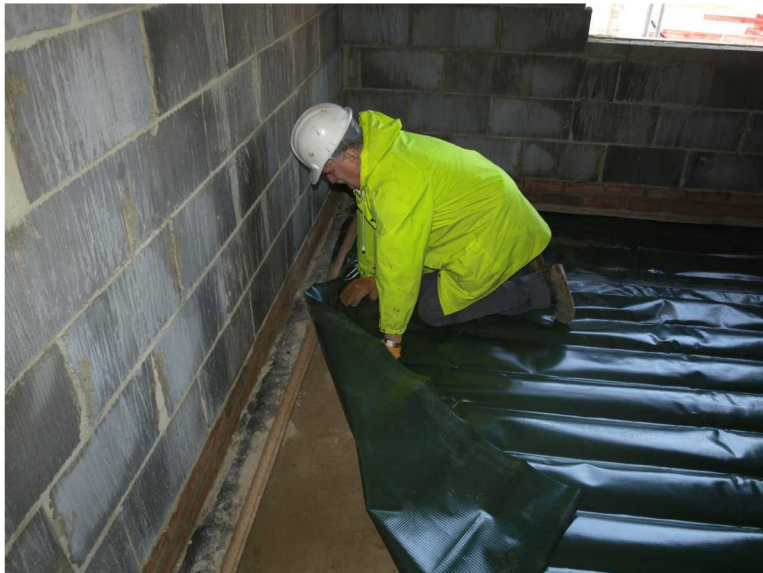
Clockwise from top left: British Knapen brochure, British Knapen Gallwey brochure advertising use of Protim wood preservative, Protim Services vans and operatives in 1970s



By Appointment  
to Her Majesty Queen Elizabeth II  
Damp Proofing and Timber Treatment  
Specialists  
ProTen Services Ltd., Bath

**ProTen**   
Services

## Protim becomes ProTen



*Clockwise from top left: ProTen Services van on a newbuild site, technician injecting a new damp proof course, technician carrying out woodworm treatment, and a radon membrane being laid by ProTen's Special Projects Manager.*