

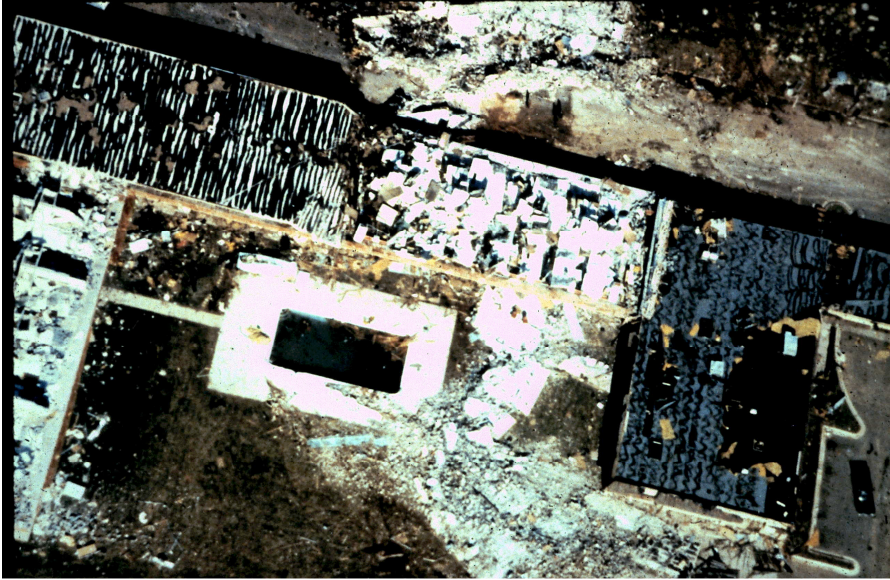
December 3, 1978 Bossier City Tornado Pictures



Former Official-in-Charge Ernest Ethridge surveying tornado damage with Dr. Ted Fujita. (Photo courtesy of Ernest Ethridge)



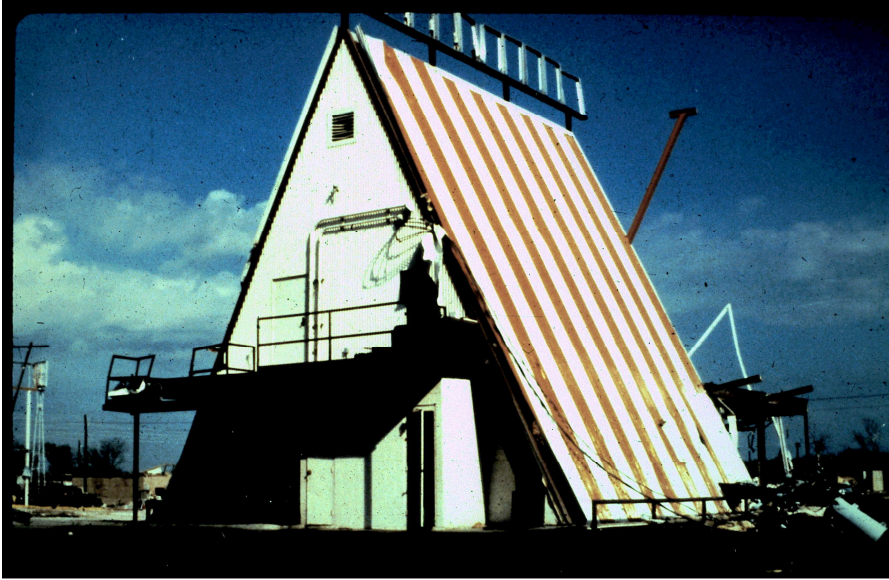
Airline Drive Area. The pointed roof of the Whataburger is left untouched. Structures on both sides were smashed by estimated upper F3 to lower F4 winds. Starbucks is now in the approximate location of Whatburger. (Photo courtesy of Ernest Ethridge)



Destruction at the Best Western Bossier Inn. This motel is the present-day Holiday Inn. (Photo courtesy of Ernest Ethridge)



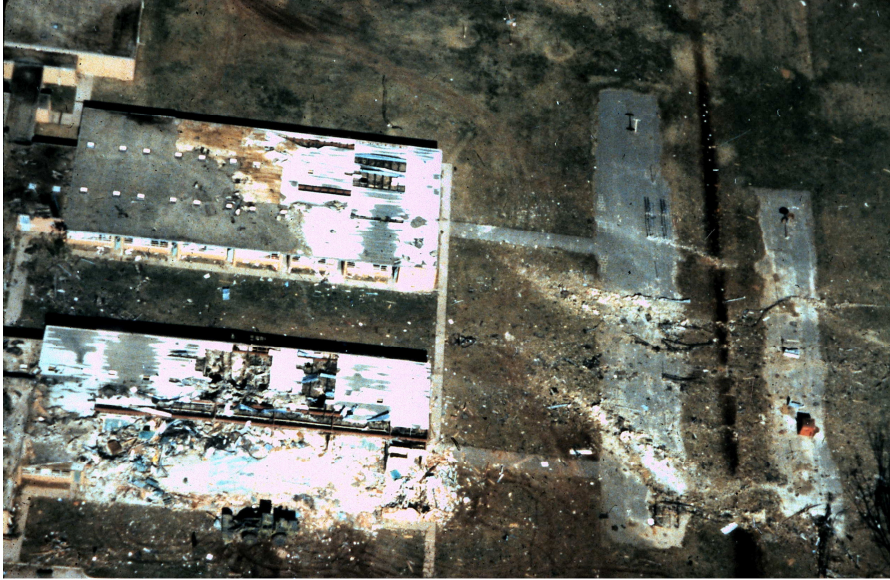
Destruction at the Best Western Bossier Inn. View from the ground. (Photo courtesy of Ernest Ethridge)



The Whataburger was practically left untouched. Survey indicated that it was located between two suction vortices. (Photo courtesy of Ernest Ethridge)



The curved path of the tornado can be seen in this view looking toward Airline Drive from Meadowview Elementary. (Photo courtesy of Ernest Ethridge)



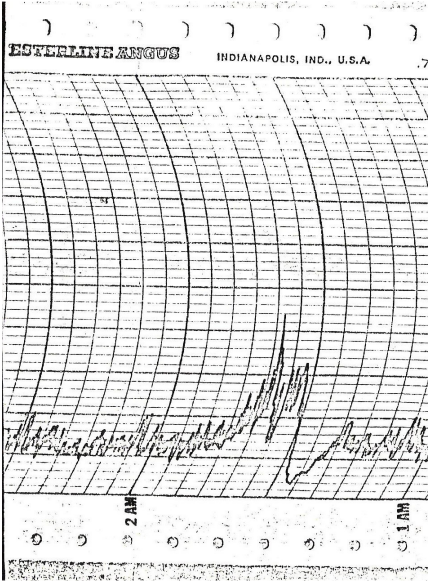
The south wing of Meadowview Elementary School. (Photo courtesy of Ernest Ethridge)



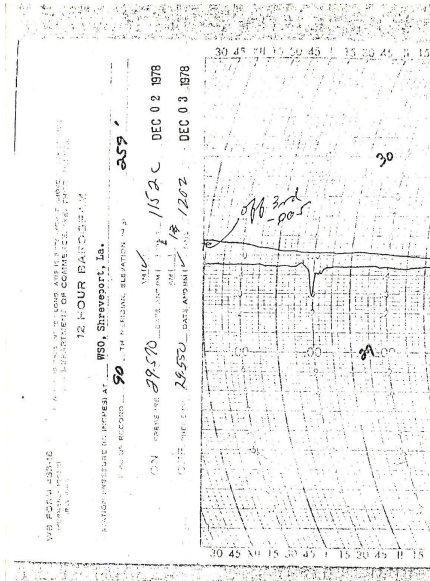
One of several 700 pound I-beams stuck deep into the ground by the tornado. (Photo courtesy of Ernest Ethridge)



Two girls sleeping in beds in the upper left house were killed by a car which fell onto them. (Photo courtesy of Ernest Ethridge)



Record of the wind speed as the tornado-producing supercell passed over observing equipment at the National Weather Service in Shreveport. The peak wind speed indicated is between 45 and 50 MPH. (Courtesy of Ernest Ethridge)



A trace of the atmospheric pressure as the tornado-producing supercell passed over observing equipment at the National Weather Service in Shreveport. Note the rapid drop in pressure as indicated by the dip in the trace. (Courtesy of Ernest Ethridge)

SHLA ← CABLE TV OVER FDC
 BULLETIN
 TORNADO WARNING
 EBS ACTIVATION REQUESTED
 NATIONAL WEATHER SERVICE SHREVEPORT LA
 133 AM CST SUN DEC 3, 1978

*EWK/AT
 1 EBS 2 times
 EBS
 SAILED P.F.
 ELECTED WITH
 NEW PHONE
 3 TIMES
 BAR BOX
 TROOP C*

THE NATIONAL WEATHER SERVICE HAS ISSUED A TORNADO WARNING...FOR THE SHREVEPORT/BOSSIER CITY METROPOLITAN AREA.

...RADAR INDICATED A POSSIBLE TORNADO FORMING OVER THE AREA...

NOTE TO THE MEDIA...SPECIFIC DETAILS WILL FOLLOW SHORTLY ON THE EXACT LOCATION...DIRECTION AND SPEED OF MOVEMENT OF THE STORM. PLEASE BROADCAST...IMMEDIATELY AND FREQUENTLY...ALSO INCLUDE TORNADO SAFETY RULES.

NATIONAL WEATHER SERVICE SHREVEPORT...LOUISIANA
 NNMM

The initial tornado warning issued for the Bossier City tornado at 1:33 am. This warning was issued approximately 17 minutes prior to the tornado's touchdown. A tornado warning issued prior to receiving a report of a tornado touchdown was an unusual occurrence prior to the use of Doppler radar. (Courtesy of Ernest Ethridge)

-NEWSRSHV

ZZZZZ

SHLA

BULLETIN
SEVERE THUNDERSTORM WARNING
IMMEDIATE BROADCAST REQUESTED
NATIONAL WEATHER SERVICE SHREVEPORT LA
138 AM CST SUN DEC 3, 1978

THE NATIONAL WEATHER SERVICE HAS ISSUED A TORNADO WARNING EFFECTIVE UNTIL 230 AM CST FOR THE FOLLOWING PARISHES IN NORTHWEST LOUISIANA...

CADD...BOSSIER AND WEBSTER INCLUDING THE SHREVEPORT/BOSSIER CITY METROPOLITAN AREA.

AT 125 AM CST THE SHREVEPORT RADAR INDICATED A POSSIBLE TORNADO IN A SEVERE THUNDERSTORM OVER SOUTH SHREVEPORT MOVING TOWARD BOSSIER CITY. THE STORM WAS MOVING NORTHEAST AT 35 MPH.

PERSONS IN THE PATH OF THIS STORM SHOULD TAKE COVER. THIS BULLETIN UPDATES THE TORNADO WARNING BULLETIN ISSUED AT 133 AM CST AND THE SEVERE THUNDERSTORM BULLETIN ISSUED AT 125 AM CST FOR THE SAME AREA.

*SHLA Replaces
communications on cap
telephone received
STAMA between 125 AM
AND 138 AM*

*KAREN
EBS
1125 AM
Tulic
Shreveport
Bossier City
EBS
AND*

This tornado warning for the Bossier City tornado was issued at 1:38 am to provide detailed information on the location and movement of the storm. Even if the first warning was not heard or received, this warning provided twelve minutes of advance notice prior to touchdown. (Courtesy of Ernest Ethridge)

ZZZZZ

BULLETIN
TORNADO WARNING
EBS ACTIVATION REQUESTED
NATIONAL WEATHER SERVICE SHREVEPORT LA

230 AM CST SUN DEC 3 1978

THE NATIONAL WEATHER SERVICE HAS EXTENDED TORNADO WARNINGS IN TIME AND NORTHEAST...EFFECTIVE UNTIL 330 AM CST FOR THE FOLLOWING PARISHES AND COUNTIES.

NORTHWEST LOUISIANA...WEBSTER AND CLIBORNE...

SOUTHCENTRAL ARKANSAS...SOUTHEAST COLUMBIA

TORNADO WARNING REMAINS IN EFFCT FOR NORTHEAST BOSSIER PARISH UNTIL 3 AM CST.

AT 228 AM CST THE SHREVEPORT RADAR INDICATED POSSIBLE TORNADOES AT THE FOLLOWING POINTS...5 MILES WEST OF COTTON VALLEY LOUISIANA AND 20 MILES SOUTHWEST OF HAYNSVILLE.

THE TORNADOES ARE MOVING TOWARD THE NORTHEAST AT 40 MPH.

MAJOR DAMAGE OCCURED IN THE HEART OF BOSSIER CITY LOUISIANA ...SHORTLY BEFORE 2 AM CST...INJURIES REPORTED.

*TROOP 11
HOPE ASP
LITTLE ROCK was
will move into SC
EBS KWKH
ETA W*

Tornado warnings continued to be issued by the National Weather Service in Shreveport as the supercell thunderstorm moved northeast. (Courtesy of Ernest Ethridge)



Damage to the Port au Prince Apartments in Bossier City. (Courtesy of LSUS Archives – Noel Memorial Library)



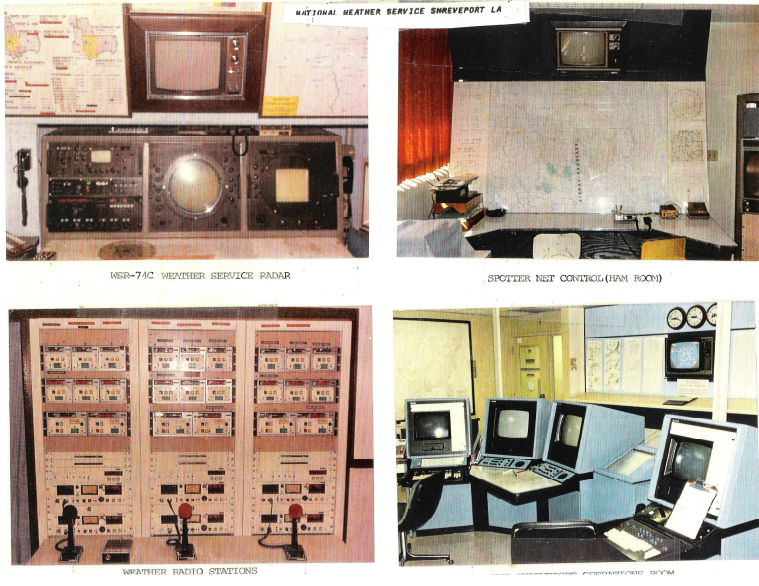
The Port au Prince Apartments in Bossier City almost 1 year after the Bossier City tornado. (Courtesy of LSUS Archives – Noel Memorial Library)



Looking north on Airline Drive almost 1 year after the Bossier City tornado. The location of the Pizza Hut has not changed and is seen on the left adjacent to Whataburger. (Courtesy of LSUS Archives – Noel Memorial Library)



Looking west along US-80 (Texas Ave.) almost 1 year after the Bossier City tornado. Land behind Whataburger, Pizza Hut, and Wendy's is the location of Pierre Bossier Mall. (Courtesy of LSUS Archives – Noel Memorial Library)



A glimpse at equipment used at the National Weather Service in Shreveport during the time of the Bossier City tornado. Clockwise, from the upper left, WSR-74C radar, HAM radio operating area, AFOS computer equipment in the operations area, and NOAA Weather Radio broadcast equipment. (Courtesy of Ernest Ethridge)



A glimpse at equipment currently used at the National Weather Service in Shreveport. In the foreground is the computer workstation called AWIPS, which allows National Weather Service meteorologists to compose forecasts and warnings.