

QUALITY METRO DATA CENTER

Atlanta, Georgia (downtown)



FOCUSED ON THE RIGHT SOLUTION



DATA CENTER FACILITY

546,640 sq. ft. data center footprint
990,000 sq. ft. total enclosed space

Concrete & brick structure with reinforced steel.
Dual reinforced roof; 85MPH wind rating.

Large truck (18-wheeler) docks and small truck docks are able to support all of your shipping requirements. Secured Receiving area designated for customer owned equipment.

FLOOR SPACE

200,000 sq. ft. available Q3 2007
250,000 additional sq. ft. available Q1 '09

200,000 sq. ft. office space

COMMUNICATIONS

Direct fiber access to Sprint, Level 3, Time Warner Telecom, BellSouth and WorldCom with Conduit to AGL Networks, MFN and Southern Telecom. Other accessible fiber providers include Qwest, WillTel/AT&T, Norfolk Southern RR, Deltacom, Adelphia, Media One and Looking Glass Networks.

Copper or fiber access to carrier bandwidth using cable management trays throughout building.

Multiple secure entrances into building including multiple CO redundancy and fiber access to primary carriers. Dark fiber available from multiple carriers.

POWER

On-site Georgia Power substation with 80MW of N+1 power (3x40MW transformers) fed by three diverse substations and two electrical grids.

(19) 2.0MW generators with a static UPS provide back-up power of over 20MW's of usable power.

All power cabling below floors is installed in either conduit or sealtight flexible conduit with approved connectors to all equipment.

Supported 24x7x365 computer monitoring and facility engineers.

COOLING

Over 280-30 ton Lieberts provide air flow to over 200,000 sq. ft. of raised floor space.

Air temperature under floor delivered at $68^{\circ} \pm 5^{\circ}$ with humidity at $50\% \pm 5\%$.

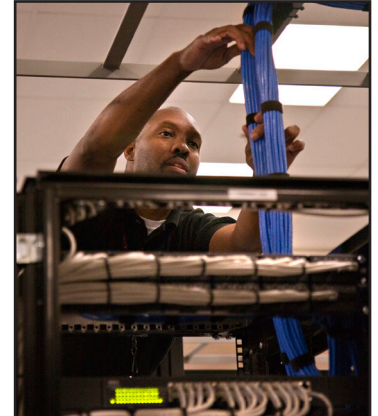
Leak detection under all raised floor. Drains are utilized to remove any water from under floor.

FIRE PROTECTION

Smoke sensors above raised floor.

Very Early Smoke Detection Apparatus - the world's leading air sampling smoke detection system - provides the earliest possible warning of a potential fire event by detecting smoke particles at the incipient (first) stage of fire.

Pre-action dry pipe system requires alert from two sensors, which activates pipe fill and a final stage when the temperature exceeds thresholds.



ABOUT QUALITYTECH

Quality Technology Services is one of the nation's largest privately-held providers of mission-critical data centers and managed services. We provide unmatched availability, scalability and security through our nationwide footprint of robust data center facilities. Our corporate headquarters is located in Overland Park, Kansas, and two of our flagship facilities are located in Atlanta, Georgia. These and all QualityTech facilities deliver industry-leading power and cooling density as well as a robust network and world-class managed services. QualityTech's mission is to enhance customers' position within their respective marketplaces by offering operational efficiency, controlling costs and mitigating risks associated with the management of information technology. All QualityTech facilities are developed, owned and managed by Quality's real estate arm.

ADDRESS

1033 Jefferson St. NW
Ste. 103
Atlanta, GA 30318