



ANNUAL REPORT

2007 – 2008

Adopted by Council – 24 February 2009



Table of Contents

Regional Profile	4
Demographics	5
Shire President's Report	6
Chief Executive Officer's Report	7
Overview of Plan for the Future	10
Statutory	11
Elected Members	13
Organisational Structure	14
Independent Audit Report	15
Financial Report	16





Our Vision, Mission and Core Values

Our Vision

To lead the Shire of Ravensthorpe towards the provision of a quality lifestyle for the community with substantial infrastructure based on a diverse sustainable economy, in harmony with the environment.

Our Mission

Our mission is to develop the Shire of Ravensthorpe into the best place to live and work on the south coast of Western Australia. We plan to:

- **Implement** modern management principles to benefit the community through effective service delivery
- **Assist** in the fostering of self determination in social, cultural and heritage responsibility areas to provide for a quality lifestyle
- **Maintain**, upgrade and develop physical infrastructure within Council's financial capabilities to support growth and development
- **Pursue** and promote economic development to foster a diverse and sustainable industry base
- **Enhance** and maintain the environment for future generations to ensure conservation of our natural and cultural assets

Our Core Values

Our core values, the creed by which we operate, are:

- Honesty and integrity
- Quality communication
- Customer service
- Accountability
- Unity
- Leadership
- Continuous improvement
- Initiative and innovation
- Fairness and equity





Regional Profile

The Shire of Ravensthorpe is a Local Government Area in the southern Goldfields-Esperance region of Western Australia, about halfway between the city of Albany and the town of Esperance and about 530km southeast of Perth. The Shire covers an area of 13,551km², and its seat of government is the town of Ravensthorpe.

The Ravensthorpe Range covered by salmon gums encircles Ravensthorpe town. The shire comprises approximately two thirds natural bushland and this includes the Fitzgerald River and Frank Hann National Parks. The agricultural industry grew significantly in the 1950s and '60s and despite recessions and drought the industry has stabilised the district ever since. Cereal growing is becoming the main focus, with sheep and cattle farming also occurring in the Shire. The Shire is experiencing growth with the mining of nickel. Mining operations are generating activity and new business to the town.

The Shire's main town sites are Hopetoun (population 586, ABS 2006), Munglinup (population 122, ABS 2006) and Ravensthorpe (population 438, ABS 2006). Hopetoun is on the south coast and it was established in 1900 as a coastal town servicing the Phillips River Mining District, and named after the 7th Earl of Hopetoun and first Governor General of Australia, John Hope. The town's population is growing due the establishment of a nickel mine in 2007 located between Hopetoun and Ravensthorpe.

Munglinup is located along the South Coast Highway between Ravensthorpe and Esperance and close to the Munglinup River. The Munglinup is Indigenous Australian in origin and of unknown meaning. The name first appeared on maps made by early settlers in 1868. The region was first opened up for farming in the late 1950s and by the early 1960s the community asked for a town site between Esperance and Ravensthorpe to be considered. The town site was surveyed in 1961 and gazetted in 1962.

Ravensthorpe was surveyed by Surveyor General John Septimus Roe in 1848; the town was named after the nearby Ravensthorpe Range. Gold was discovered at Annabel Creek and more profitable discovered followed in 1900 that resulted in a boom. The population climbed to over 1,000 and by 1901 the government gazetted the town of Ravensthorpe. The area continued to prosper and the population grew accordingly. By 1909 the population was over 3,000. The prosperity was short-lived and by 1918 the local copper smelter had closed and many of the copper and gold mines had closed.





More recently BHP Billiton commenced a feasibility study in 2002 into opening a nickel and cobalt mine and processing plant 35km east of the town. The project was approved in 2004 and construction commenced shortly afterward. The plant known as the Ravensthorpe Nickel Project was commission in late 2007 with first production occurring in October and the first 5,000 tonnes being produced by December 2007. The plant was officially opened in 2008.

Demographics

The population of the shire (based on the 2006 Census) was 1950 in 2006. This figure does not include the mine employees based at camps and commuting with fly in – fly out (FI – FO) and bus in – bus out, or tourist visitors to the region.

The population of the mining camps is equivalent to approximately 650 permanent residents, although this will decrease to approximately 400 as the construction phase at the mine site ends.

Hopetoun and the nearby Fitzgerald River National Park are popular tourist destinations, with a seasonal influx of tourists, which significantly increases the population and the demand on services. Based on tourist numbers of 142,000 'visitor nights' recorded by Tourism Australia, this is equivalent to and additional 389 permanent residents, figuratively increasing the total population to approximately 3,000 (2007/08).





Shire President's Report

It is with pleasure that I present this report for the financial year ending 30th June, 2008. The year was extremely active primarily due to the start up of the BHP Billiton Nickel Mine. Considerable growth and development occurred in the Shire with \$42 million of building construction approved and some 90 planning consent applications processed.

Planning and construction of capital infrastructure, particularly community facilities such as the Hopetoun School, Childcare Centre, Co-location Centre etc occupied a lot of councillors and staff time. Despite the pressure the mining industry placed on council and the community during the year council still managed to successfully provide core services such as roads, sport and recreation, waste management, environmental management and law and order.

Changes to the Local Government Act resulted in the Local Government Elections being held in October 2007. All councillors were elected unopposed, I sincerely thank Cr Don Lansdown for his support as Deputy President and acknowledge and thank Cr Ruth Kirchner, Cr Ian Goldfinch, Cr Bill Auburn, Cr Rusty Lee and Cr Kerry Dickinson for their support and contribution to the district.

There were a number of staff changes towards the end of the year in review which also saw the resignation of Mr Stuart Taylor, after some five years as Chief Executive Officer. I would like to thank Stuart for his dedicated service to the community, particularly through the period of unprecedented growth and development experienced in the Shire.

I would also like to acknowledge all local community groups and volunteers for their contribution of time and expertise to the community. Particularly, I acknowledge the work of volunteer Bushfire Brigades for their efforts in controlling a number of serious wildfires during the extreme fire season.

The ongoing support and contribution from the community, councillors and staff will see our Shire continue to prosper.

Brenda Tilbrook
Shire President





Chief Executive Officer's Report

The impact of the Ravensthorpe Nickel Mine on the Shire of Ravensthorpe continued during 2007 – 2008. A number of exciting projects which commenced in 2006 – 2007, were completed or near completed, including the co-location centre, primary school and childcare centre in Hopetoun and the Entertainment Centre in Ravensthorpe.

Development generated by the advent of the nickel mine kept staff and councillor's extremely busy during the year. Despite the increased workload, Council successfully delivered core local government services to its community.

A brief summary of activities during 2007 – 2008 is as follows:

Rates

For the 2007/08 financial year Council adopted an average rate increase of 5%. The minimum general rate decreased from \$493.00 to \$437.00.

The number of properties included in the rates base increased from 1,376 in 2006 / 2007 to 1,507 in 2007/08 - an increase of 9.5%.

Rate revenue increased from \$1,641,255 to \$1,917,283.

Loans

The overall borrowings of Council decreased during the year from \$2,730,449 at 1 July 2007 to \$2,566,965 at 30 June 2008. There was only one self supporting loan which was repaid in full by the end of the 2008 financial year.

Investments

At the beginning of the 2007/08 year Council had \$2,100,000 invested with the Lehman Brothers Group. The economic slowdown that started during this year has resulted in this investment being revalued so that the asset value is now \$1,170,390. This represents a loss of \$929,610 to the year ended 30 June 2008.

Fire Management

The Shires voluntary Bushfire Brigades continued to provide effective fire protection and management to the community.

- During the year some 54 wildfires were reported
- A number of training courses and forums were attended by Brigade members
- Successful negotiations were held to achieve Memorandum of Understandings for the co-location centre in Hopetoun and Jerdacuttup Brigade / RNO
- A LEMAC Exercise was held at the Ravensthorpe Airport
- A new rural 4x4 fire unit was delivered to the Hopetoun Fire Brigade





Law and Order

Control details for the 2007/08 year are:

Dogs

Verbal warnings	100+
Dog Fines	10
Written Cautions	Nil

Litter

Verbal warnings	Nil
Fines	Nil
Written Cautions	Nil

Off Road Vehicles

Verbal warnings	20+
Fines	Nil
Written Cautions	Nil

Camping

Verbal warnings	20+
Fines	Nil
Written Cautions	Nil

Bush Fires

Verbal warnings	Nil
Fines	Nil
Written Cautions	Nil

Town Planning

The Department Planning & Development Services dealt with a total of 89 development applications during the 2007/2008 financial year. The applications considered covered a wide variety of developments including:

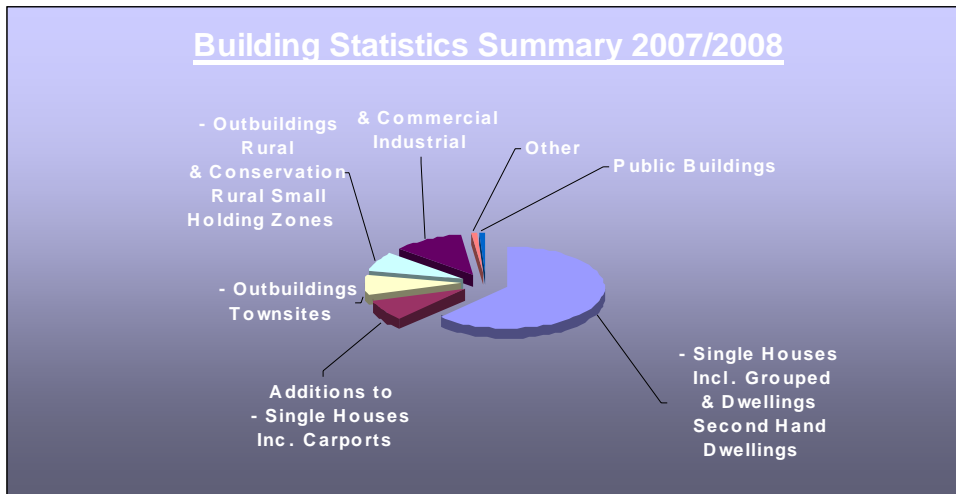
- 15 applications for commercial/Industrial developments;
- 3 applications for domestic outbuildings within town sites;
- 10 applications for domestic outbuildings in the Rural Conservation and Rural Small Holding Zones;
- 9 applications for single houses in the Rural Conservation and Rural Small Holding Zones;
- 9 applications for Variation/s to the Residential Design Codes of WA;
- 9 applications for grouped dwelling units;
- 1 application for holiday accommodation;
- 2 applications for extensions to existing buildings in the Rural Conservation and Rural Small Holding Zones;
- 20 referral for subdivisions by the Western Australian Planning Commission;
- 1 application for a childcare premise;





Building Statistics Summary 2007/2008

	No of Licences Issued	Value in \$ (Inc GST)
Single Houses (Incl. Grouped Dwellings & Second Hand Dwellings)	112	33,498,589
Additions to Single Houses (Inc. Carports)	15	280,555
Outbuildings (Town sites)	14	124,263
Outbuildings (Rural Conservation & Rural Small Holding Zones)	14	159,200
Commercial & Industrial	21	6,199,601
Other (pools, retaining wall, etc.)	2	17,000
Public Buildings	2	1,647,676
TOTAL	180	41,926,884





Overview of Plan for the Future

Section 5.56 of the Local Government Act 1998 requires a local government to plan for the future of the district.

In the 2006 – 2007 Annual Report, Council signalled the adoption of a 7 year Plan for the Future. For various reasons this did not eventuate. Council has however investigated a community consultation program to solicit public input into the development of a detailed plan for the ensuing five years, commencing 1 July, 2009.

Although Council did not adopt the Plan for the Future in 2007 – 2008, a significant planning process was put in place prior and during the construction and production phase of the Ravensthorpe Nickel Mine.

Infrastructure and servicing needs of the Shire were assessed at that time, resulting in:

- Plant and equipment purchases
- Internal resourcing of essential services
- A new primary school in Hopetoun
- Upgraded Vocational Educational and Training at the Ravensthorpe District High School
- Waste water treatment services in Hopetoun
- Upgraded state and local roads
- Release of serviced residential land in Hopetoun
- Construction of the Ravensthorpe Airport
- Co-located Emergency Services and Rural Transaction Building in Hopetoun and the Ravensthorpe Entertainment Centre

All of the above projects have been successfully completed.

In addition to the above project planning and implementation, Council has a number of statutory forward planning documents, including Town Planning Scheme N^o5 and associated policies, The Ravensthorpe Esperance Blueprint, Ravensthorpe Shire Cultural Plan, Coastal Management Plan and the Disability Access and Inclusion Plan.





Statutory

National Competition Policy

Clause 7 of the Competition Principles Agreement requires that government business operators have no advantage or disadvantage in comparison with the private sector.

Competitive neutrality should apply to all business activities which generate a user pay income of over \$200,000 unless it can be shown it is not in the public interest.

The Shire of Ravensthorpe had no business activity with a user pays income in excess of \$200,000.

Public Interest Disclosure Act 2003

In accordance with this legislation, procedures have been implanted to facilitate reporting and action on public interest disclosures.

During the 2007/08 reporting period no public interest disclosures were lodged.

Local Laws

During the reporting year Council did not adopt any new local laws.

Disability Services Advisory Committee

The committee is a formal community based Committee of Council formed under the requirements of the Disability Services act. Members of the Committee represent the Ravensthorpe Community, Disability Services Commission and Council.

The Committee reviews requirements for people with disabilities and senior members of the Community, and further, reviews the general access and mobility requirements within the town centre in accordance with statutory provisions and Council policies.

Council's Disability Service Plan was replaced by the Disability Access and Inclusion Plan in June 2007.

Annual Salaries

Regulation 19(B) of the Local Government (Administration) Regulations requires that the annual report of a local government for a financial year is to contain details of the number of employees with an annual salary entitlement of \$100,000 or more and the number of those employees with an annual salary entitlement that falls within each bank of \$10,000 over \$100,000.

In accordance with this regulation the following applies:

\$130,000 – 1 for the report period.





State Records Act 2000

State Records Commission Standard 2 (Record Keeping Plan), Principle 6 (Compliance) states that government organisations, including local government, should develop and implement strategies for ensuring that each employee is aware of the compliance responsibilities under their Recordkeeping Plan.

The Shire of Ravensthorpe Record was endorsed by the Commission during 2003/04. Staff are continually working on implementing the strategies outlines in this plan.





Elected Members

Rural

Cr Brenda Tilbrook

President

Ravensthorpe

Cr Don Lansdown

Deputy President

Rural

Cr Ian Goldfinch

Ravensthorpe

Cr Kerry Dickinson

Rural

Cr Ruth Kirchner

Hopetoun

Cr Rusty Lee

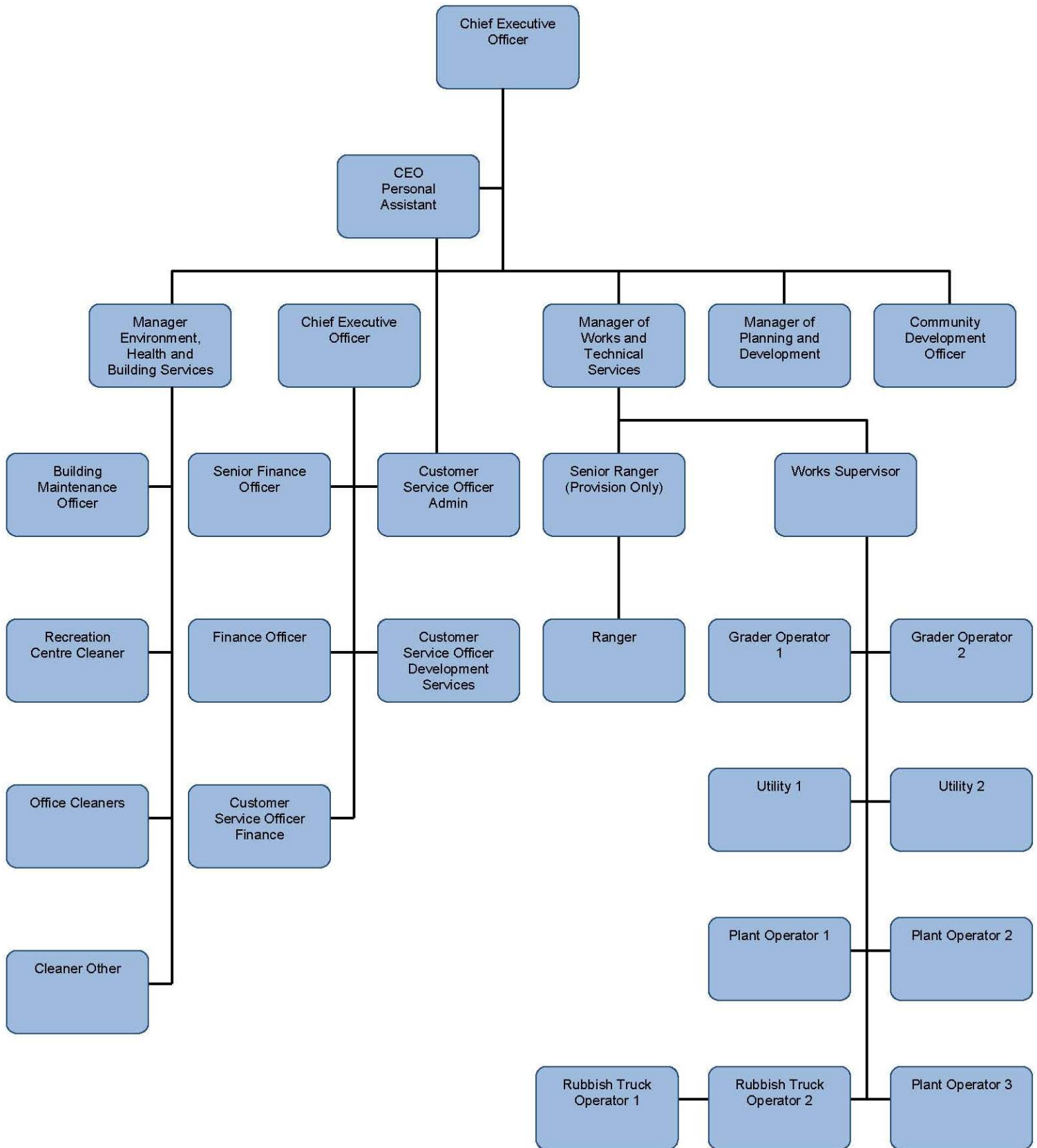
Hopetoun

Cr Bill Auburn





Organisational Structure





Independent Audit Report





Financial Report

