

Patons® Bamboo Baby



EMBROIDERED CARDIGAN (TO KNIT)

SIZES

To fit chest measurement

| | | |
|---------------|--------|-----------|
| 3 mos | 16 ins | [40.5 cm] |
| 6 mos | 17 ins | [43 cm] |
| 12 mos | 18 ins | [45.5 cm] |
| 18 mos | 19 ins | [48 cm] |

Finished chest

| | | |
|---------------|--------|-----------|
| 3 mos | 19 ins | [48 cm] |
| 6 mos | 21 ins | [53.5 cm] |
| 12 mos | 23 ins | [58.5 cm] |
| 18 mos | 24 ins | [61 cm] |

MATERIALS

SIZES 3 (6-12-18) mos

Main Color (MC) (91620 Soft Yellow) **3 (3-4-4) balls**
Small amount of **Contrast A** (91719 Peach Garden) and **Contrast B** (91718 Soft Green) for embroidery.

Sizes 3.75 mm (U.S. 5) and 4.5 mm (U.S. 7) knitting needles **or size needed to obtain tension**. Cable needle. 3 stitch holders. 5 buttons. Size 4 mm (U.S. G or 6) crochet hook for edging (optional).

TENSION

20 sts and 26 rows = 4 ins [10 cm] with larger needles in stocking st.

PANEL PAT A

(worked over 10 sts). (See chart).

1st row: (RS). K2. P4. C4F.

2nd row: P4. K4. P2.

3rd row: T4F. P2. K4.

4th row: P4. K2. P2. K2.

5th row: P2. C4F. T4F.

6th row: P2. K2. P4. K2.

7th row: T4B. T4F. K2.

8th row: P4. K4. P2.

These 8 rows form Panel Pat A.

PANEL PAT B

(worked over 10 sts). (See chart).

1st row: (RS). C4B. P4. K2.

2nd row: P2. K4. P4.

3rd row: K4. P2. T4B.

4th row: K2. P2. K2. P4.

5th row: T4B. C4B. P2.

6th row: K2. P4. K2. P2.

7th row: K2. T4B. T4F.

8th row: P2. K4. P4.

These 8 rows form Panel Pat B.

INSTRUCTIONS

The instructions are written for smallest size. If changes are necessary for larger sizes the instructions will be written thus (). Numbers for each size are shown in the same color throughout the pattern. When only one number is given in black, it applies to all sizes.

BACK

With MC and smaller needles, cast on **58 (62-70-74)** sts.

1st row: (RS). *K2. P2. Rep from * to last 2 sts. K2.

2nd row: *P2. K2. Rep from * to last 2 sts. P2.

Rep last 2 rows (K2. P2) ribbing 5 times more (12 rows in all) inc **3 (7-5-5)** sts evenly across last row. **61 (69-75-79)** sts.



ABBREVIATIONS: www.patonsyarns.com/glossary

Change to larger needles.

1st row: (RS). P5 (2-5-7). (K4. P3) 2 (3-3-3) times. Work 1st row of Panel Pat A. P3. Work 1st row of Panel Pat B. (P3. K4) 2 (3-3-3) times. P5 (2-5-7).

2nd row: K5 (2-5-7). (P4. K3) 2 (3-3-3) times. Work 2nd row of Panel Pat B. K3. Work 2nd row of Panel Pat A. (K3. P4) 2 (3-3-3) times. K5 (2-5-7).

3rd row: P5 (2-5-7). (C4B. P3) 2 (3-3-3) times. Work 3rd row of Panel Pat A. P3. Work 3rd row of Panel Pat B. (P3. C4F) 2 (3-3-3) times. P5 (2-5-7).

4th row: K5 (2-5-7). (P4. K3) 2 (3-3-3) times. Work 4th row of Panel Pat B. K3. Work 4th row of Panel Pat A. (K3. P4) 2 (3-3-3) times. K5 (2-5-7).

5th row: P5 (2-5-7). (K4. P3) 2 (3-3-3) times. Work 5th row of Panel Pat A. P3. Work 5th row of Panel Pat B. (P3. K4) 2 (3-3-3) times. P5 (2-5-7).

6th row: K5 (2-5-7). (P4. K3) 2 (3-3-3) times. Work 6th row of Panel Pat B. K3. Work 6th row of Panel Pat A. (K3. P4) 2 (3-3-3) times. K5 (2-5-7).

Last 6 rows form pat. Panel Pats are now in position.

Cont in pat until work from beg measures 5 (61/2-7-8) ins [12.5 (16.5-18-20.5) cm], ending with a WS row.

Shape armholes: Keeping cont of pat, cast off 2 (4-5-5) sts beg next 2 rows. 57 (61-65-69) sts rem.

Dec 1 st at each end of needle on next and every following alt row 1 (2-3-4) time(s) more. 53 (55-57-59) sts rem.

Cont even in pat until armhole measures 4 (41/2-5-51/2) ins [10 (11.5-12.5-14) cm], ending with a WS row.

Shape shoulders: Keeping cont of pat, cast off 6 sts beg next 4 rows. Leave rem 29 (31-33-35) sts on a st holder.

LEFT FRONT

With MC and smaller needles, cast on 30 (34-34-34) sts. Work 12 rows in (K2. P2) ribbing as given for Back, ending on a 2nd row and inc 1 (1-4-6) st(s) evenly across last row. 31 (35-38-40) sts.

Change to larger needles.

1st row: (RS). P5 (2-5-7). (K4. P3) 2 (3-3-3) times. Work 1st row of Panel Pat A. P2.

2nd row: K2. Work 2nd row of Panel Pat A. (K3. P4) 2 (3-3-3) times. K5 (2-5-7).

3rd row: P5 (2-5-7). (C4B. P3) 2 (3-3-3) times. Work 3rd row of Panel Pat A. P2.

4th row: K2. Work 4th row of Panel Pat A. (K3. P4) 2 (3-3-3) times. K5 (2-5-7).

5th row: P5 (2-5-7). (K4. P3) 2 (3-3-3) times. Work 5th row of Panel Pat A. P2.

6th row: K2. Work 6th row of Panel Pat A. (K3. P4) 2 (3-3-3) times. K5 (2-5-7).

Last 6 rows form pat. Panel Pat A is now in position.

Cont in pat until work from beg measures 5 (61/2-7-8) ins [12.5 (16.5-18-20.5) cm], ending with a WS row.

Shape armhole: Keeping cont of pat, cast off 2 (4-5-5) sts beg next row. 29 (31-33-35) sts rem. Work 1 row even in pat.

Dec 1 st beg of next and every following alt row 1 (2-3-4) time(s) more. 27 (28-29-30) sts rem.

Cont even in pat until armhole measures 2 (2½-23/4-3½) ins [5 (6-7-8.5) cm], ending with a WS row.

Shape neck: Next row: (RS). Pat across 18 (18-19-19) sts (neck edge). **Turn.** Leave rem 9 (10-10-11) sts on a st holder. Dec 1 st at neck edge on next 4 rows then on every following alt row 2 (2-3-3) times more. 12 sts rem.

Cont even in pat until armhole measures same length as Back to beg of shoulder shaping, ending with a WS row.

Shape shoulder: Cast off 6 sts beg next row. Work 1 row even in pat. Cast off rem 6 sts.

RIGHT FRONT

Work from ** to ** as given for Left Front.

Change to larger needles.

1st row: (RS). P2. Work 1st row of Panel Pat B. (P3. K4) 2 (3-3-3) times. P5 (2-5-7).

2nd row: K5 (2-5-7). (P4. K3) 2 (3-3-3) times. Work 2nd row of Panel Pat B. K2.

3rd row: P2. Work 3rd row of Panel Pat B. (P3. C4F) 2 (3-3-3) times. P5 (2-5-7).

4th row: K5 (2-5-7). (P4. K3) 2 (3-3-3) times. Work 4th row of Panel Pat B. K2.

5th row: P2. Work 5th row of Panel Pat B. (P3. K4) 2 (3-3-3) times. P5 (2-5-7).

6th row: K5 (2-5-7). (P4. K3) 2 (3-3-3) times. Work 6th row of Panel Pat B. K2.

Last 6 rows form pat. Panel Pat B is now in position.

Cont in pat until work from beg measures 5 (61/2-7-8) ins [12.5 (16.5-18-20.5) cm], ending with a RS row.

Shape armhole: Keeping cont of pat, cast off 2 (4-5-5) sts beg next row. 29 (31-33-35) sts rem.

Dec 1 st beg of next and every following alt row 1 (2-3-4) time(s) more. 27 (28-29-30) sts rem.

Cont even in pat until armhole measures 2 (2½-2¾-3¼) ins [5 (6-7-8.5) cm], ending with a WS row.

Shape neck: Next row: (RS). Slip first 9 (10-10-11) sts on a st holder. Rejoin yarn to rem 18 (18-19-19) sts and pat to end of row.

Dec 1 st at neck edge on next 4 rows then on every following alt row 2 (2-3-3) times more. 12 sts rem.

Cont even in pat until armhole measures same length as Back to beg of shoulder shaping, ending with a RS row.

Shape shoulder: Cast off 6 sts beg next row. Work 1 row even in pat. Cast off rem 6 sts.

SLEEVES

With smaller needles, cast on **30** (**34-34-34**) sts.
Work 12 rows in (K2. P2) ribbing as given for Back, inc **3** (**3-3-5**) sts evenly across last row. **33** (**37-37-39**) sts.

Change to larger needles.

1st row: (RS). P**5** (**7-7-8**). Work 1st row of Panel Pat A. P3. Work 1st row of Panel Pat B. P**5** (**7-7-8**).

2nd row: K**5** (**7-7-8**). Work 2nd row of Panel Pat B. K3. Work 2nd row of Panel Pat A. K**5** (**7-7-8**).

Panel Pats are now in position.

Cont in pat for 2 more rows.

Inc 1 st at each end of next and every following 4th row until there are **45** (**49-53-57**) sts, taking inc sts into reverse stocking st.

Cont even in pat until work from beg measures **6** (**6½-7½-8½**) ins [**15** (**16.5-19-21.5**) cm], ending with a WS row.

Shape top: Cast off **2** (**4-5-5**) sts beg next 2 rows. **41** (**41-43-47**) sts.

Sizes 6, 12 and 18 mos only: Dec 1 st at each end of next row and every following alt row (**3-4-6**) times more. 33 sts rem.

All sizes: Dec 1 st at each end of next **11** (**7-7-7**) rows. Cast off rem 19 sts.

FINISHING

Pin garment pieces to measurements and cover with a damp cloth leaving cloth to dry. Sew shoulder seams.

Neckband: With RS facing, MC and smaller needles, K**9** (**10-10-11**) from right front st holder. Pick up and knit **11** (**11-13-13**) sts up right front neck edge. K**29** (**31-33-35**) from back st holder inc **1** (**1-3-3**) st(s) evenly across. Pick up and knit **11** (**11-13-13**) sts down left front neck edge. K**9** (**10-10-11**) from left front st holder. **70** (**74-82-86**) sts.
Beg on a 2nd row, work 7 rows in (K2. P2) ribbing as given for Back. Cast off in ribbing.

Buttonhole Band: With RS facing, MC and smaller needles, pick up and knit **50** (**58-62-70**) sts up right front edge to top of neckband.

Beg on a 2nd row, work 3 rows in (K2. P2) ribbing as given for Back.

Next row: (RS). Rib across 2 sts. *Cast off 2 sts. Rib across **9** (**11-12-14**) sts. Rep from * 3 times more. Cast off 2 sts. Rib across 2 sts. (5 buttonholes).

Next row: Rib, casting on 2 sts over cast off sts.

Work a further 2 rows in ribbing. Cast off in ribbing.

Button Band: Work as for Buttonhole Band along left front edge, omitting all references to buttonholes.

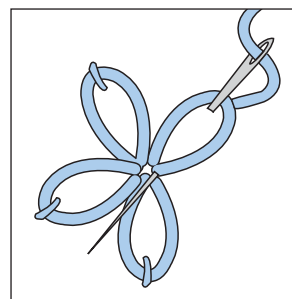
Crochet Band Edging (optional): With RS facing and crochet hook, join MC with sl st in lower corner of buttonhole band. Ch 1. 1 sc in same sp. *Miss next 2 sts. [(1 dc. Ch 1) twice. 1 dc] all in next st. Miss next 2 sts. 1 sc in next st. Rep from * to last **1** (**3-1-3**) st(s). 1 sc in each of last **1** (**3-1-3**) st(s). Fasten off. Rep along button band edge, joining MC at corner of neck edge.

Sew side and sleeve seams. Sew in sleeves. Sew on buttons to correspond to buttonholes.

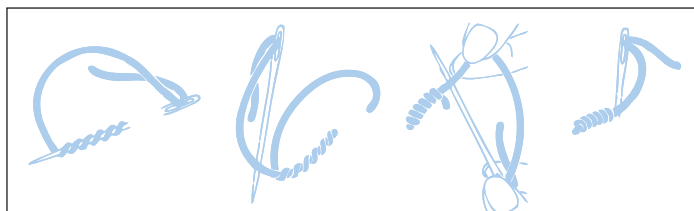
Using A and B, work embroidery on fronts as shown in picture (see diagrams).



Lazy Daisy Stitch



Bullion Stitch



Key

☐ = Knit on RS and purl on WS.

▬ = Purl on RS and knit on WS.

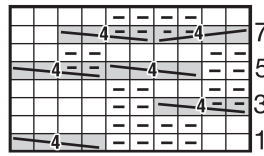
= C4B

= C4F

= T4B

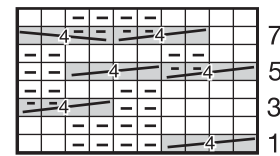
= T4F

Panel Pat A

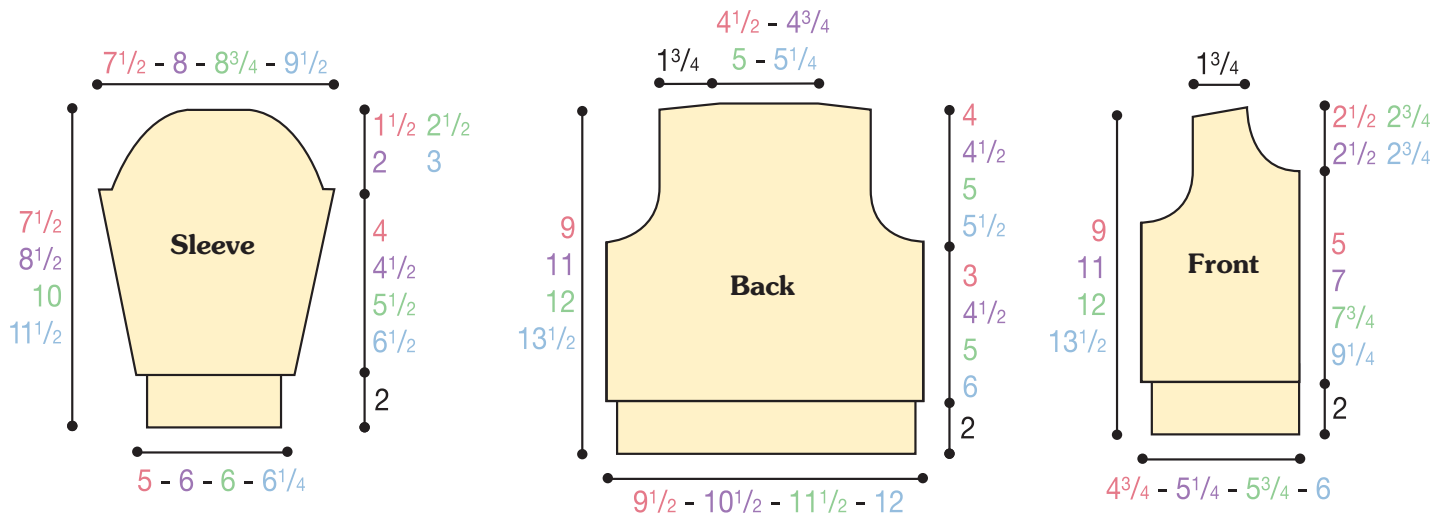


Start Here

Panel Pat B



Start Here



ABBREVIATIONS

Alt = Alternate(ing).

Beg = Beginning.

Ch = Chain(s)

Cont = Continue(ity).

C4B = Slip next 2 stitches onto cable needle and leave at back of work. K2, then K2 from cable needle.

C4F = Slip next 2 stitches onto cable needle and leave at front of work. K2, then K2 from cable needle.

Dc = Double crochet.

Dec = Decrease(ing).

Inc = Increase 1 stitch by knitting into front and back of next stitch.

K = Knit.

P = Purl.

Pat = Pattern.

Pss = Pass slipped stitch over.

Rem = Remaining.

Rep = Repeat.

RS = Right side.

Sc = Single crochet.

Sl st = Slip stitch.

Sl1 = Slip next stitch knitwise.

St(s) = Stitch(es).

T4B = Slip next 2 stitches onto cable needle and leave at back of work. K2, then P2 from cable needle.

T4F = Slip next 2 stitches onto cable needle and leave at front of work. P2, then K2 from cable needle.

Tog = Together.

WS = Wrong side.

Yfwd = Yarn forward.

Patons®

... a part of your life.

P.O. Box 40, Listowel ON N4W 3H3