



**LEEMING
SENIOR HIGH
SCHOOL**

HARMONY~EXCELLENCE



SCHOOL REPORT

2008

Our Community

Opened in 1985, Leeming Senior High School was established to serve the educational needs of a rapidly growing and educationally aware, urban population. In 2008 the student population was 1147 serviced by 92 teaching staff. The school is committed to the values of learning, excellence equity and care and has established a reputation for excellence in academic sporting and cultural achievement. The school takes great pride in its motto of Harmony and Excellence.

The curriculum offered has been adapted to meet the particular needs of different students and is responsive to social and technological changes. Leeming Senior High School has demonstrated that students can work in harmony while excelling academically, physically and socially.



Student Information

Enrolment

The school is located in the southern suburbs of the Perth metropolitan area. In 2009 our enrolment figures are:

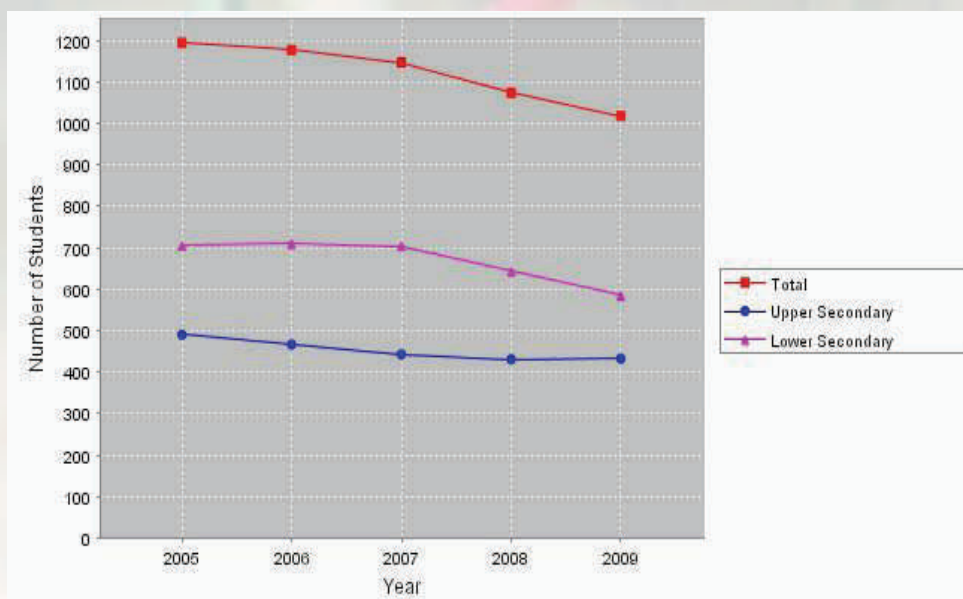
Student Numbers (as at 2009 Semester 1)

Total	Y08	Y09	Y10	Y11	Y12
1018	174	176	235	226	207

Male	555
Female	463
Total	1018

Aboriginal	3
Non-Aboriginal	1015
Total	1018

Student Number Trends (based on Semester 1 Census Data)



Semester 1	2005	2006	2007	2008	2009
Lower Secondary	705	710	704	643	585
Upper Secondary	490	467	443	431	433
Total	1195	1177	1147	1074	1018

Attendance

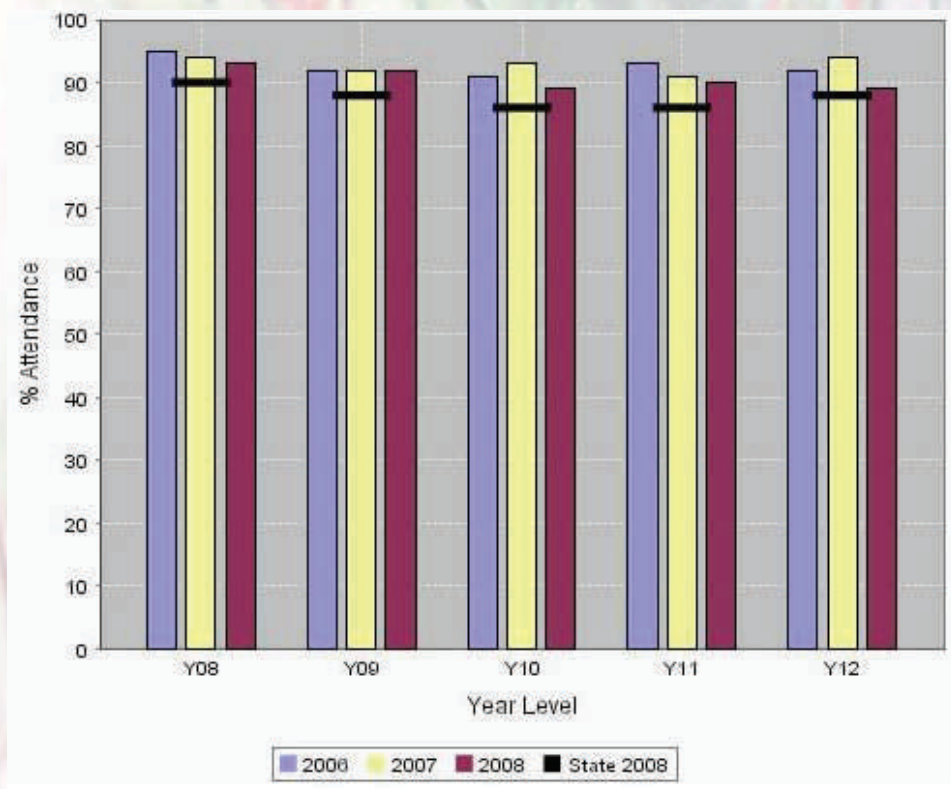
Leeming Senior High School continued to promote student attendance in its strategies to foster student achievement. Parents are encouraged to contact the school directly should their child be absent, and the school proactively contacts parents by telephone should a child be away without notice. Student attendance in all year groups is well above the state average. In 2008 Leeming SHS implemented a new system that uses the mobile phone Short Message Service (SMS) to send text messages to notify parents/caregivers of an unexplained absence.

Attendance - Overall

	Total	
2006	92.7%	88.0%
2007	92.5%	88.4%
2008	90.5%	87.6%



Attendance - By Year Level



	Y08	Y09	Y10	Y11	Y12
2006	95%	92%	91%	93%	92%
2007	94%	92%	93%	91%	94%
2008	93%	92%	89%	90%	89
State 2008	90%	88%	86%	86%	88

Sources of Students

The school draws its student population from the surrounding suburbs. The Year Eight intake is traditionally drawn mainly from *Banksia Park*, *Leeming* and *West Leeming* primary schools. The enhanced reputation of the school has resulted in students enrolling from our feeder primary schools and significant numbers of enrolment inquiries from out-of-area families and families emigrating from overseas.

In 2008, Year 8 students joined the school from twenty nine different primary schools, with an additional five students from overseas.

Intake Schools (as at 2009 Semester 1)

	Male	Female	Total
5659 Leeming Primary School	20	16	36
5682 West Leeming Primary School	10	15	25
5686 Bibra Lake Primary School	14	10	24
5701 Banksia Park Primary School	9	14	23
5596 Kardinya Primary School	8	2	10
5735 Canning Vale Primary School	6	3	9
5519 Bateman Primary School	3	5	8
5574 Bull Creek Primary School	3	4	7
4184 Atwell College	2	2	4
5764 Ranford Primary School	2	2	4
OSEA Overseas	2	1	3
5688 Forest Crescent Primary School	1	1	2
5405 Rossmoyne Primary School	2		2
5679 Samson Primary School	1	1	2
1415 Carey Baptist College	1		1
5791 Coolbellup Community School		1	1
5177 East Fremantle Primary School	1		1
5445 East Victoria Park Primary School	1		1
5158 Eaton Primary School	1		1
4031 Gilmore College	1		1
1301 Kids Open Learning School		1	1
1363 Mater Christi Catholic Pri Sch		1	1
5305 Millen Primary School		1	1
5651 Newton Primary School	1		1
1144 Our Lady Of Fatima School	1		1
5680 South Lake Primary School	1		1
5563 Warnbro Primary School		1	1
5662 Yangebup Primary School		1	1
QLD Queensland		1	1
Total	91	83	174

Student Retention

Generally once enrolled in Year 8, students complete their secondary education at the school. However, with greater opportunities available for students to pursue their specialized education in the TAFE sector or through Apprenticeships and Traineeships, and the strong demand for employment in a buoyant state economy a greater number of students are taking advantage of these opportunities.

	Year 12 Students	Percentage Achieving Secondary Graduation
2006	194	95%
2007	188	98%
2008	161	96%

Apparent Retention and Progression

	Years 8-10	Years 8-12
2006	104%	78%
2007	100%	74%
2008	96%	80%

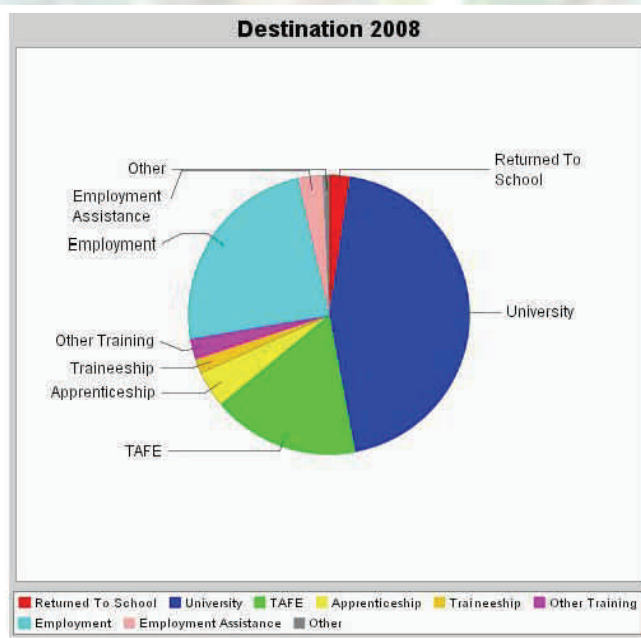
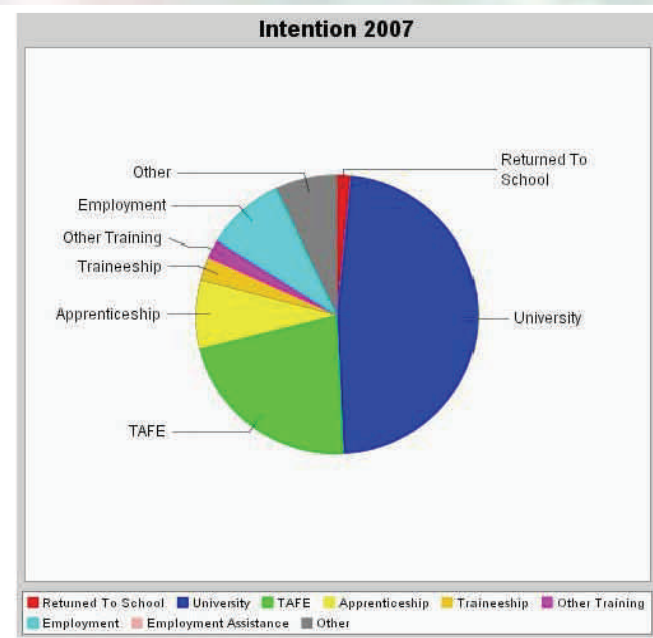
Years 10-12	Years 10-11	Years 11-12
77%	94%	88%
84%	101%	89%
78%	98%	76%



Post-School Destinations

Students who completed Year 12 at Leeming Senior High School in 2007 were found to have taken the following pathways in 2008:

Year 12 Intentions and Destinations



	Intention 2007	Destination 2008
Returned to School	1.6%	2.4%
University	47.6%	44.6%
TAFE	21.9%	16.9%
Apprenticeship	8.0%	4.2%
Traineeship	2.7%	1.8%
Other Training	2.1%	2.4%
Employment	9.1%	24.1%
Employment Assistance	0.0%	3.0%
Other	7.0%	1.6%
Total	100.0%	100.0%



Staff Matters

2008 Leadership

Early in 2007 the Principal Catherine O'Neill took ill and was on leave for the entire year. The relieving Principal for the year was Ross Morcombe.

The up-graded position of Business Manager was advertised and Carolyn Pobjoy successfully won the position. She has been outstanding in building a very competent and harmonious non-teaching team and led the school successfully through a School Audit.

Principal

Deputy Principal Administration & Year 8

Deputy Principal Student Services & Year9/10

Deputy Principal Curriculum & Year 11/12

Business Manager

Learning Area Leaders:

Science

Physical and Health Education

Mathematics

English

Society & Environment

Technology & Enterprise: *Design & Technology*

Technology & Enterprise: *Business & Home*

The Visual and Performing Arts

Languages other than English

Science and Technology Academy Coordinators

Academic Extension Program Coordinator

Teacher Qualifications

All 2008 members of the teaching staff were registered with the *Western Australian College of Teaching*, thus meeting the professional requirements to teach both in this school and other schools in Western Australia.

Staff Attendance

The commitment of members of staff at Leeming Senior High School can be seen in their attendance at the workplace:

Ross Morcombe

Judy Semple

Rod Guthrie

Ian States

Carolyn Pobjoy

Learning Area Leaders:

Graeme Roberts

Rod Hancock

Colin Abé

Wayne Lamotte

Mike Fazio

Peter Sheppard

Iris Granger

Mark Williams

Annie Mayes

Graeme Roberts & Graeme Nicholls

Marisa Lovatt



STAFF GROUP	2006	2007	2008
Teaching Staff	97%	96%	99.2%
Support Staff	95%	95%	95.6%
All Staff	97%	96%	98.5%

Staff Retention

Leeming Senior High School enjoys a highly stable staff enjoying an 80.2% Retention Rate. It engaged eighty six teachers in 2008, eighty of whom were retained from the previous year.

Professional Learning

All members of staff engaged in a Professional Learning Program that was closely linked to their Performance Management and to the priorities established by both the school and the Department. Teachers implementing the new upper-school *Courses of Study* attended professional development sessions on those courses; there was a focus on classroom management strategies, on pastoral care, on improving literacy, on using information technology and on educating in the sciences.



Ross Morcombe - Principal

Community Involvement

School Council

Our school's strong partnership with its parent and wider community is extremely important in ensuring the high quality educational opportunities we provide, and we are very appreciative of the support we receive.

The energy and enthusiasm of members of the School Council during 2008 has been greatly appreciated and we sincerely thank them for their outstanding commitment to this school.

School Council Members 2008

Mr Mark Brodie	Student Representative
Ms Ashli Fletcher	Student Representative
Mr Michael Seaton	Chairperson
Dr Susan Ho	P & C Representative
Mrs Carol Brand	Parent Representative
Mrs Gail Curtis	Parent Representative
Mr Geoff Garnett	Community Representative
Prof David Macey	Community Representative
Mr Kerrol Gildersleeve	School Representative
Mr Mark Williams	School Representative
Mr Ross Morcombe	School Principal

Parents and Citizens Association 2008

The P&C, under the leadership of President Dr Susan Ho and her Executive Team, worked hard to provide support to the school's programs and to improve facilities for students.

As well as continuing steadily to provide air conditioning to Learning Areas, funds were allocated to purchase equipment in Learning Areas and to support programs such as Student Leadership and School Chaplaincy and the Solar Car Challenge. Parent Information Nights were organized dealing with topics such as building resilience, the perils of drug use in teenagers and dealing with mental illness.

The P&C also supported the school in addressing the security of the school, particularly over holidays and weekends.

Curriculum

The *Curriculum Framework* forms the basis for the delivery of teaching and learning experiences in the school. Each one of the eight Learning Areas delivers a comprehensive program for students, supplementing in-class activities with relevant excursions and enrichment activities.

Enrichment and Extra-Curricular Programs

Leeming Senior High School offers a broad range of enrichment and extra-curricular activities to support its formal curriculum, to further engage young people in the school community and to enhance the school's links with the wider community. Course work is supplemented with a range of camps, incursions and excursions.

Academic Extension Program

Attracting a large number of applicants each year this Enrichment Program again selected around thirty able students to join the Year 8 Program in the *Humanities* and/or the *Sciences* and *Mathematics*. The selection process was based on merit and included analysing student performance through written application, testing, interviews and referee checks.

Science and Technology Academy

This program developed strongly in 2008 with students being engaged in a variety of challenging activities under the guidance of Coordinators Graeme Nicholls and Graeme Roberts. Regular visits by students to Scitech and by Scitech staff to the school took place with many challenging activities organised. In 2008 a STA Tour was organized for 2009 to the USA Space Centre.

Student Leadership

The 2008 Student Leaders Ashli Fletcher and Mark Brodie (pictured) were selected through a rigorous *merit selection process*. The Year Twelve Student Councillors elected by their peers for 2008 were Kevin Oates, Kate Luckin, Bronwyn Dewar, Angela Tong, Haider Zaman, Dean de Bruin, Cassandra Chai and Alana Shenton.



Other Activities

The school offers a plethora of other enrichment opportunities to young people during the course of the year. Last year these included:

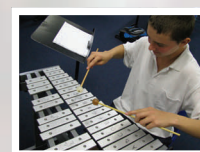
- **Literacy Enhancement** for students at educational risk
- **Inter-School Sports** the school fields school teams in a comprehensive array of sports – both the Athletics teams and Swimming were promoted to A grade for 2008.
- **Language Exchanges** for students of French and Japanese
- **Academic Competitions** in Mathematics, Computing and other subjects
- **The Reaching-Out Community Service Program**
- **Mock Trial Competition**
- **Curtin University Accounting Experience**
- **Chess**
- **Literary Evening** for creative writers
- **South of the River Dance Festival**
- **School Drama Production:**
Oh What a Lovely War (pictured)
- **Music:** Concert Bands, Jazz Band, String Ensemble, Guitar Ensemble, Voice Ensemble etc



Special Achievements

2008 Mikage High School Visit to Leeming SHS.

This is the 14th year of this wonderful exchange program between our two schools. eager anticipated and welcomed by the Leeming students. This year Leeming hosted 20 students and two teachers (Esaki Sensei and Niboshi Sensei) from Mikage High School in Kobe, Japan.



Student Achievement – Year 12 2008

The school once again held its *Valedictory Ceremony* at Winthrop Hall. The Ceremony celebrates the achievements of all Year 12 students and thanks them for their positive contribution to our community over the years. Special acknowledgement is made of academic excellence and for citizenship.

Year 12 School Valedictory Subject and Other Awards 2008

ART DEPARTMENT		SOCIETY & ENVIRONMENT	
Art	Aayla Bux	Economics	Brenton Panzich
Art & Design	Ryan Bodmer	Geography	Luke Walkey
Dance	Laura Pilsworth	History	Alessio Di Toro
Drama 2A/2B	Liam Riley	Career & Enterprise 1A	Courtnee Nichols
Media Production and Analysis	Ryan Bodmer	Career & Enterprise 1B	Chloe Gliddon
Music	Claudia Leslie	TECHNOLOGY & ENTERPRISE	
Music in Society	Hui Lien Wong	Business Education	
ENGLISH		Accounting	Shelby Hedges
English Literature	Krista Collingridge	Applied Information Technology	Shelby Hedges
English 2A/2B	Aaron Panzich	Computer Science	Adam Murray
English 1C/1D	Courtnee Nichols	Information Technology Essentials	Sean Chaplin
MATHEMATICS		Political & Legal Studies	Brenton Panzich
Foundation of Mathematics	Prue Kraft	Small Business Management	Aaron Panzich Brenton Panzich
Geometry and Trigonometry	Jerry Ting	Design & Technology	
Introductory Calculus	Diksha Karwasra	Automotive Workshop	Frank Jardim
Mathematics in Practice	Courtnee Nichols	Furniture Design and Technology	Tim Croot
PHYSICAL EDUCATION		Metals Technology	Justin Latter
Health Studies	Sarah Johnson	Technical Graphics	Candace Godley
Outdoor Education Studies	Celina Hynes	Visual Communication- Photography	Chris Purdy
Physical Education Studies	Alex McKinnon	HOME ECONOMICS	
SCIENCE		Aspects of Tourism	Prue Kraft
Biology	Nicolene Thomas	Early Childhood Studies	Isabel Dalley
Chemistry	Brett Patterson Luke Walkey	Food Production	Michelle Zinko
Human Biology	Ryan Bodmer	LANGUAGES	
Physics	Jarred Taylor	French	Alessio Di Toro
Senior Science	Adam Fulton	Japanese	Chiyoko Takeda

2008 Curriculum Council Statistics, Exhibitions and Awards

The school again performed creditably against other schools in the State, both public and private, with 108 students (57.0% of Year 12 students) completing four or more TEE subjects.

A number of individual students received Curriculum Council acknowledgement for excellence:

Martin Morrison and **Jemma Angus** were awarded *Certificates of Excellence*.

Students in the top 1% of public school students who received 99% + TER Score

Jace Collingridge and **Isurika (Ruwani) Tennakoon**

Leeming in top 10 best schools in WSA subjects for:

- Automotive Workshop
- Health Studies
- Interactive Media
- Metals Technology
- Physical Education Studies
- Small Business Management and Enterprise

The school continues to work to improve graduation rates.

Secondary Graduation Rate

	Year 12 Students	Percentage Achieving Secondary Graduation
2006	194	95%
2007	188	98%
2008	161	96%

Scholarship and Award Winners 2008

Angela Tong Positive Image Award
Angela Tong Long Tan Leadership and Excellence Award
Rachael Russell Edith Cowan Year 11 Personal Excellence Award 2008
Angela Tong Edith Cowan Year 12 Personal Excellence Award 2008
Nina Wallace Curtin University Principals Award
Isurika (Ruwani) Tennakoon UWA Excellence Scholarship
Angela Tong, Jace Collingridge, Trent Martin and Martin Morrison have all been offered Curtin University Scholarships



Angela Tong



Isurika (Ruwani) Tennakoon

TEE - Overall TEE Participation - Number of students

	Year 12 students	4 or more TEE	%TEE Students
2006	194	106	55%
2007	188	108	57%
2008	161	94	58%

Overall TEE Performance

	State	Adjusted
2006	2	2
2007	2	2
2008	2	2

State is an overall comparison with other government schools based on the distribution of Tertiary Entrance Scores (TES) for the school. Adjusted is a comparison with other government schools taking into account the school's socio-economic context.

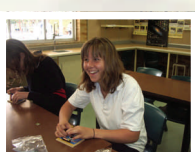
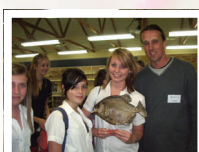
1	2	3	4
Above Expected	Expected	Below Expected	No Data

Median Tertiary Entrance Scores

Information Requirement:

Academic achievement including median Year 12 results

2007	Median TES out of a score of 510	2008	Median TES out of a score of 400
School	294	School	235
State	288	State	229



Academic Achievement in Year 12

Overall, the school continues to provide students with sound education and the capacity to perform at the highest level.

In general, the performance of the school has shown improvement over the last three years and reflects the work Heads of Department and staff have put into analysing data and planning for, and implementing strategies for improvement.

Graduation rates have remained around the average, ie 96% over the last five years.

The Tertiles reflect the change in the student population that became evident around eight years ago. However, measures taken to support student performance over the last three years have seen a significant improvement in relation to the lowest Tertile. A new pattern of middle of the road students may be represented through the preponderance of the middle Tertile.

TEE participation and performance rates have also shown an improvement from the low of 2006.

The Median TER has improved slightly.

The great bulk of students have met the cut off TER for Curtin, Murdoch and UWA.

WSA participation and performance continues to show a mixed results over the last five years. It should be noted that the excellence of teaching in these subjects is reflected in the fact five subjects rated in the top 10. Two or three more would have rated had their student numbers been higher.

SWL students with A Grades has shown both an absolute and proportional increase.

Year 9 Performance

NAPLAN Testing

The median score of Year 9 students doing standardised assessments, where available

Task	Numeracy	Reading	Writing	Spelling
School	578	578	568	580
State	555	557	553	560

The proportion of Year 9 students at or above the National Literacy and Numeracy number requirement is as follows. Numeracy 97.2% Reading 96.4% Writing 87.2% Spelling 91.8%

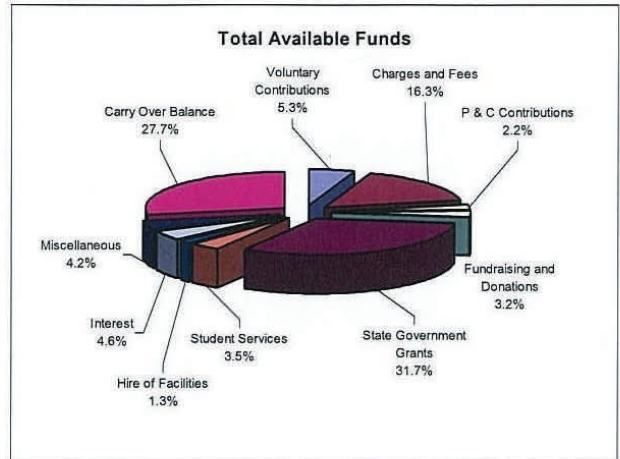
Students have performed within expectations in relation to the NAPLAN results. Whilst average scores in the five domains were below like schools the maximum difference in percentage terms (which allows for comparisons on the same numeric basis) was 3.8% for Writing and Punctuation/Grammar. To put things in perspective, the difference between Like Schools and Leeming in Numeracy is 2.9% and the difference for Literacy overall is 2.6%.

By examining Bands 8,9 and 10 for the Literacy domains, the school falls below the Like Schools but always significantly above the State. The school is closest to the Band in Spelling with 49% of students compared to Like Schools 55%. The greatest difference is in Writing 46% to 56%.

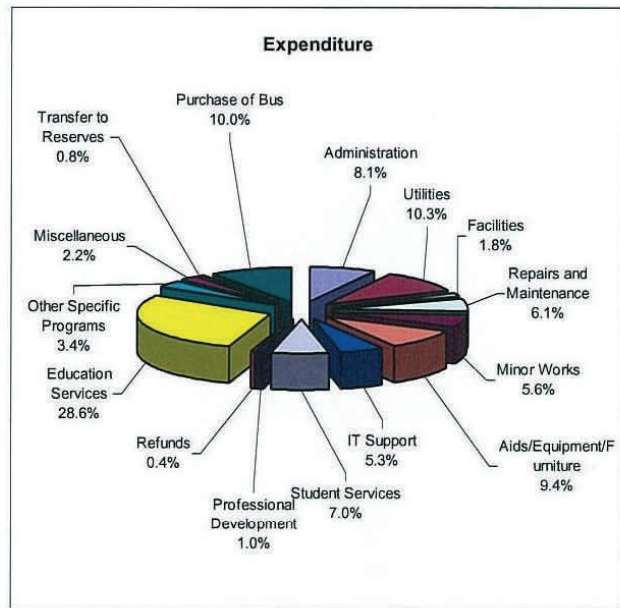
In general, the school has noted the areas of difficulty, particularly in Writing and Punctuation and Grammar, and staff have responded by revising teaching learning programs to provide students with the relevant skills and practice to raise both competence and performance.

SCHOOL BUDGET AND ANNUAL ACCOUNTS

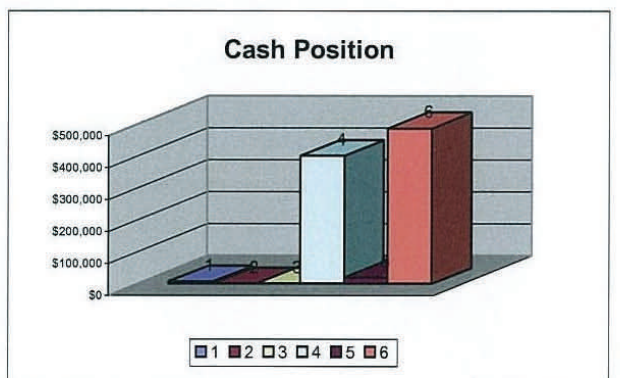
Income		
	Budget	Actual
1 Voluntary Contributions	\$96,255	\$86,866
2 Charges and Fees	\$213,100	\$265,779
3 P & C Contributions	\$35,332	\$35,332
4 Fundraising and Donations	\$17,700	\$52,350
5 State Government Grants	\$518,157	\$518,157
6 Student Services	\$24,600	\$57,680
7 Hire of Facilities	\$14,500	\$20,755
7 Interest	\$70,000	\$74,320
8 Miscellaneous	\$20,000	\$69,382
9 Carry Over Balance	\$452,290	\$452,290
Total Available Funds	\$1,461,934	\$1,632,911



Expenditure		
	Budget	Actual
1 Administration	\$151,100	\$86,744
2 Utilities	\$214,000	\$110,116
3 Facilities	\$18,000	\$18,961
4 Repairs and Maintenance	\$72,765	\$65,390
5 Minor Works	\$40,000	\$59,979
6 Aids/Equipment/Furniture	\$109,600	\$101,028
7 IT Support	\$59,000	\$56,758
8 Student Services	\$127,420	\$75,444
9 Professional Development	\$19,500	\$10,482
10 Refunds	\$3,800	\$3,777
11 Education Services	\$243,151	\$306,990
12 Other Specific Programs	\$45,980	\$36,834
13 Miscellaneous	\$30,100	\$23,075
14 Transfer to Reserves	\$9,108	\$9,108
15 Purchase of Bus	\$107,495	\$107,070
Total Expenditure	\$1,251,019	\$1,071,756
Total Funds Carry Forward	\$210,915	\$561,155



Cash Position as at: 19 December 2008	
Bank Balance	\$913,093
Made up of:	
1 Carry Over Grants (committed)	\$6,598
2 Deductible Gift Funds	\$0
3 Trust Funds	\$0
4 Asset Replacement Reserves	\$400,682
5 Suspense Accounts	\$19,845
6 Uncommitted Funds	\$485,968
Total Bank Balance	\$913,093



A brief comment on the financial performance for the year:

During 2008 the school has funded recarpeting of the Upper School Block, Airconditioning of SOSE-Maths Office - Student Services. The installation of a new perimeter fence has had a major impact on the cost of repairs and maintenance throughout the school. Two of the school demountables were removed with the school purchasing three sea containers for storage of archives and equipment. The school continues to lease classrooms to the Chung Wah Chinese School every Saturday.

