

BIGGE ISLAND (14° 30'S, 125° 10'E) – Chart AUS 729

Bigge Island is located in the Bonaparte Archipelago between York Sound and Montague Sound about 10nm north of Cape Pond. The island is heavily indented with shallow reef-strewn bays on all four coastlines. The largest bay is Boomerang Bay, about half way along the western coastline and there is a smaller bay, Wary Bay about 5nm north of Boomerang Bay as shown on the chartlet.

The reason most charter boats and cruisers visit Bigge Island is to view the Aboriginal Art at the main galleries at Wary Bay and at a smaller unnamed bay on the eastern side of the island as shown on the chartlet.

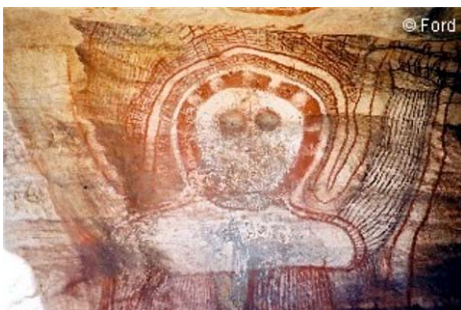
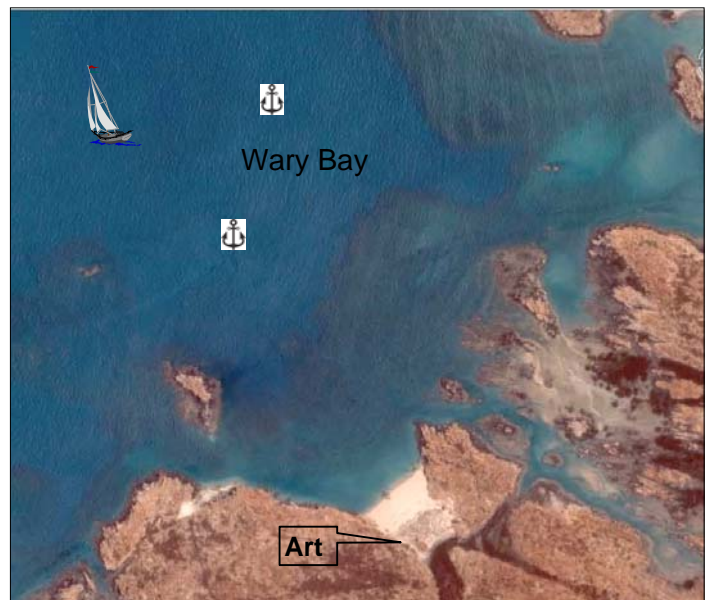
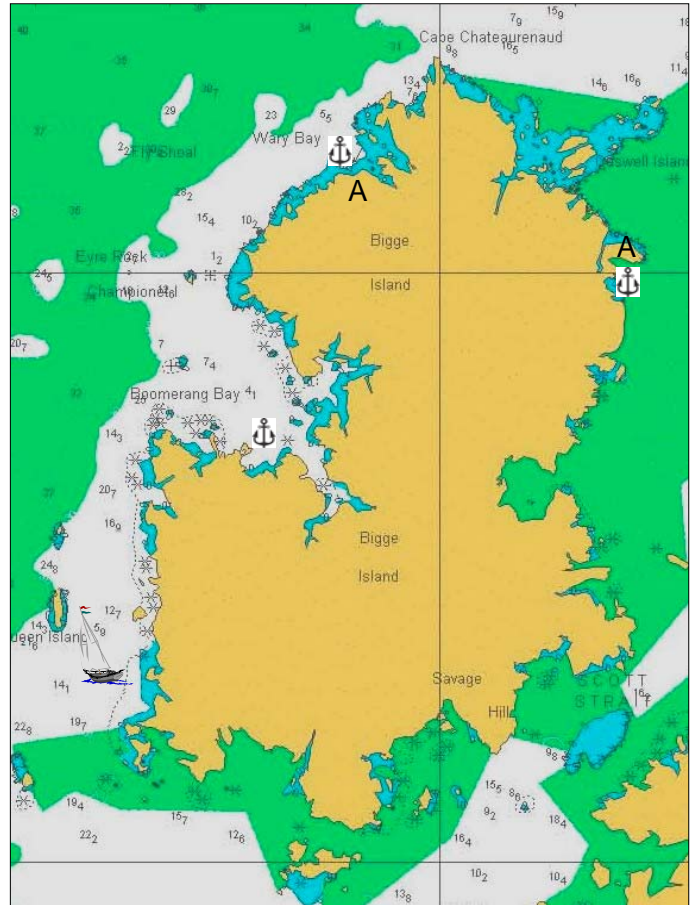
ANCHORAGES

Neither Wary Bay, nor the bay on the eastern side of Bigge Island, are ideal overnight anchorages. By far the best nearby overnight anchorage is Shelter Bay in the Prudhoe Islands, about 5nm east of Cape Chateaufrenaud on the northern tip of Bigge Island.

Wary Bay has extensive fringing reef as shown in the air photo (right). Anchor in the bay clear of the reef and clear of a drying rock in the SW part of the bay. The bay on the eastern side of the island is surprisingly deep. However, there is little fringing reef and it is only a short walk from the water's edge to the paintings amongst the rocks on the northern side of the bay.

ROCK ART

The rock art sites at Wary Bay are located in "mini gorges" in the rock cliffs at the south-western end of the beach. The photo of the Kaiara face below from the Wary Bay gallery is probably one of the most spectacular and frequently published photos of aboriginal rock art in the Kimberley.

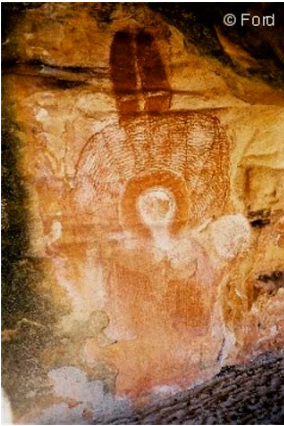


The white men in the white boat smoking pipes, and the men with ornate headresses also smoking pipes, are equally puzzling as to their origin and meaning!



Page 2 of 2

The figures below were also photographed in the mini gorges beside the beach at Wary Bay.



Around the eastern side of the island the rock art was equally easy to find, but much more difficult to photograph as the ruddy Bradshaw figures were painted under an overhanging rock (left) which is now very close to the underlying ground surface. These photos below were the best that could be done under the circumstances of poor light and limited space.

