



APACHE
felix

<http://www.apache.org/>



Dynamic Deployment with Apache Felix

Marcel Offermans

software architect at luminis
marcel.offermand@luminis.nl

PMC member at apache felix
marrs@apache.org

FOSDEM'09

FREE AND OPEN SOURCE SOFTWARE DEVELOPERS' EUROPEAN MEETING
FREE AND OPEN SOURCE SOFTWARE DEVELOPERS' EUROPEAN MEETING





- crash course OSGi
- deployment admin
- resource processors



- started in 1999 as a solution for home gateways
- maintained by OSGi alliance
- nowadays described as “the dynamic module system for Java™”
- apache felix is one of a couple of open source implementations



SERVICE MODEL

L3 publish/find/bind service model to decouple bundles

LIFE-CYCLE

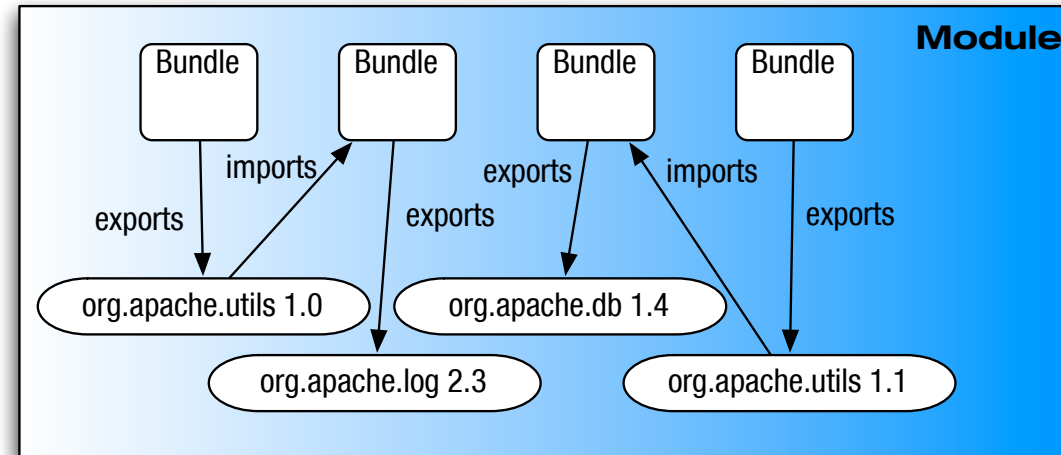
L2 independent life-cycle of bundles without JVM restarts

MODULE

L1 a module (or bundle) uses classes from other bundles in a controlled way

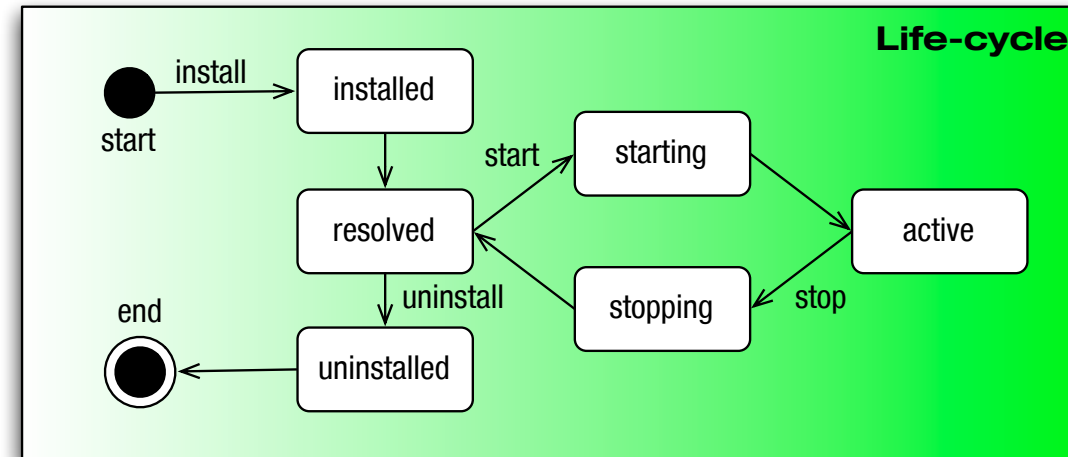
Execution Environment

L0 well defined profiles that define the environment in which bundles can work



- unit of deployment is the bundle, a JAR
- metadata in the manifest
- share only your “interface” packages
- automatic wiring based on version ranges

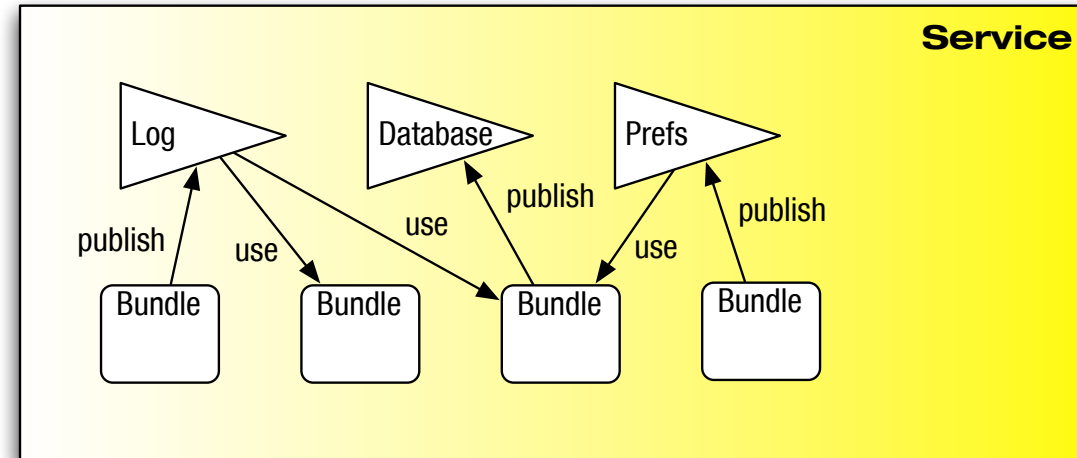
Module



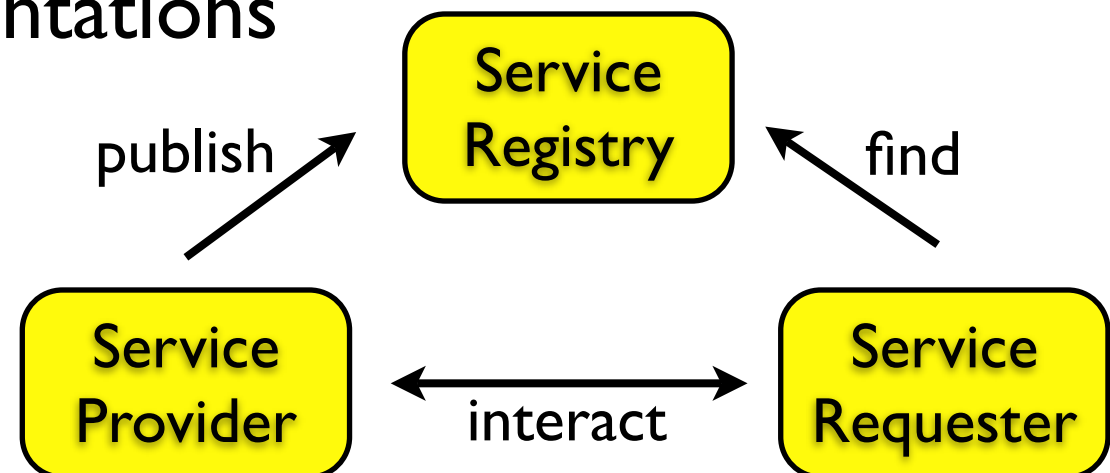
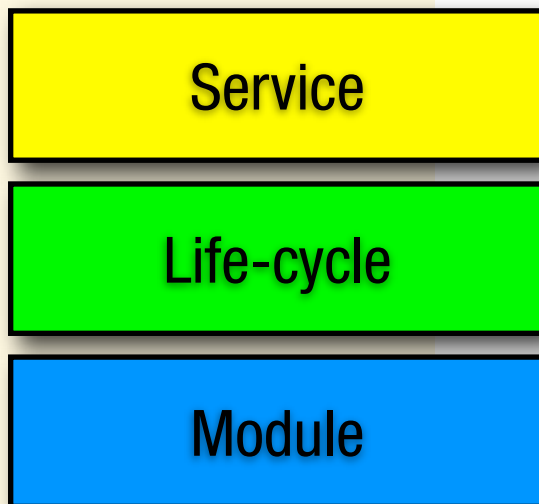
- managed life cycle for each bundle
- allows updates of existing bundles

Life-cycle

Module

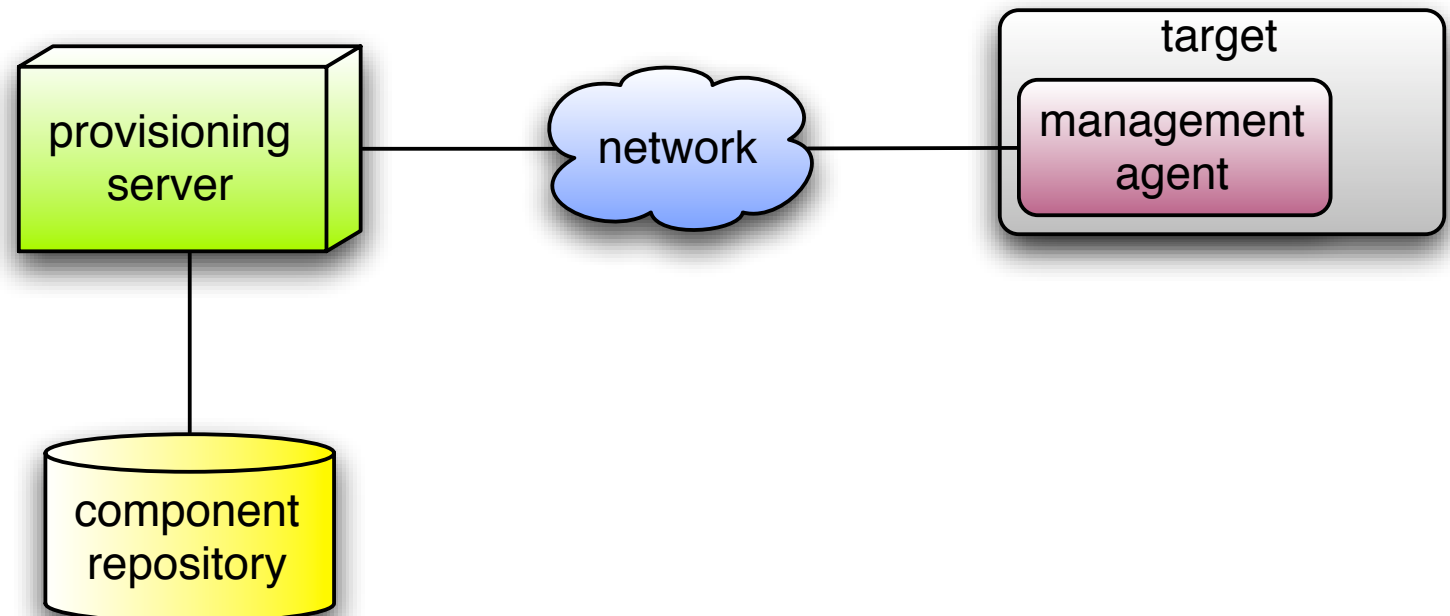


- service interfaces allow bundles to interact by binding interfaces, not implementations





- specification describes roles:
 - provisioning server
 - component repository
 - management agent

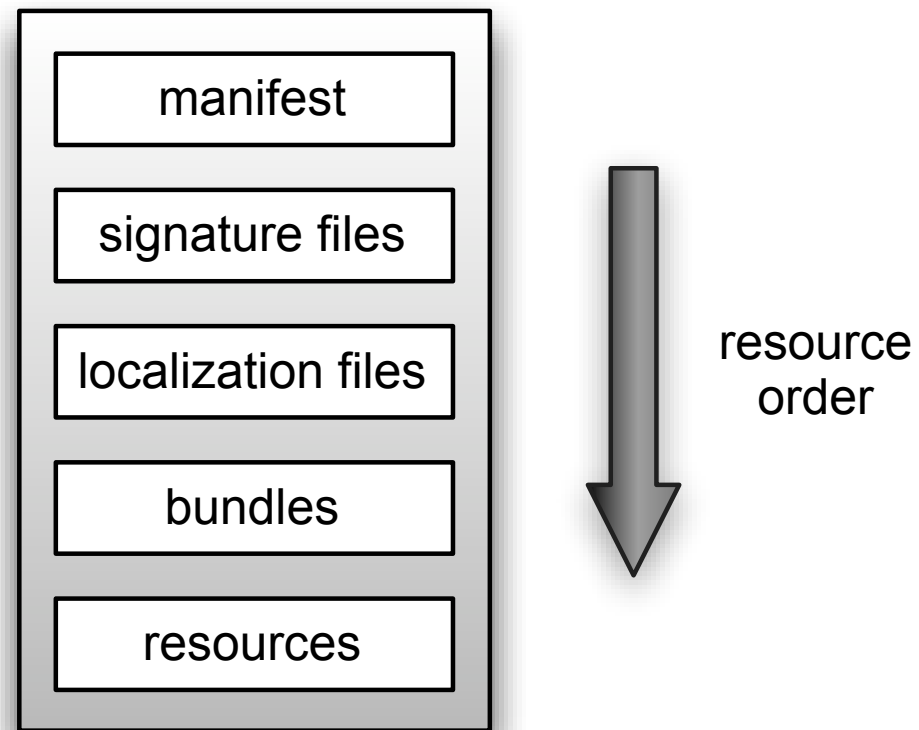




- major part of management agent
- deployment packages
 - versioned set of artifacts
 - transactional install/update
 - fix packages provide deltas
 - signing make them secure
 - extensible through processors

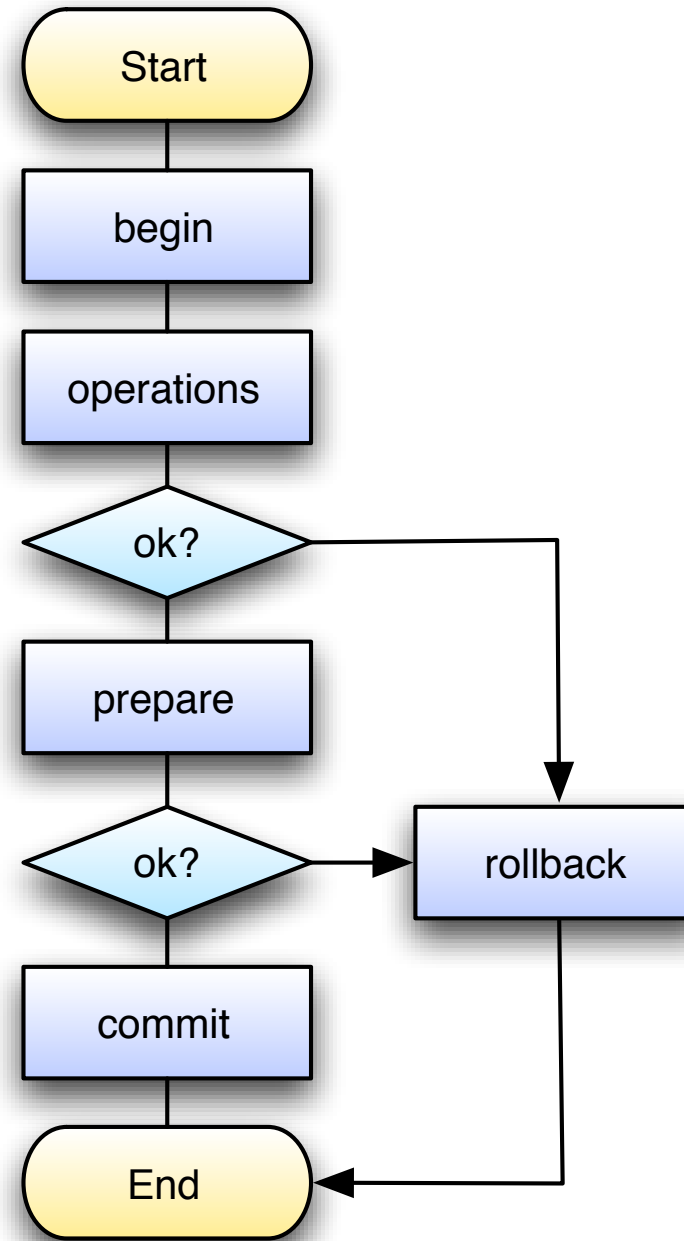


- resources are ordered so they can be streamed
- fix packages only contain the deltas





- each type of resource, identified by its mime type, has its own processor
- processors are bundles that are included in the deployment package
- support for bundles is built-in
- auto configuration defines a format for Configuration Admin settings





- deployment admin makes updates of more than one bundle transactional
- resources and processors allow you to distribute a lot more than just OSGi components
- for a demo of deployment packages in action, contact me