

COVER YOUR EARS

The long stretch of winter is upon us and the cold is creeping in—it's time to cover up your ears! The *Knits* staff gives you seven cool ways to keep your ears warm. Find your favorite earflap hat, or make them all!



RYAN'S HAT

Pam Allen, Editor In Chief

Finished Size 22½" (57 cm) circumference.

Yarn Cascade Yarns Pastaza (50% llama, 50% wool; 132 yd [121 m]/100 g): #063 brown, #050 orange, and #042 green, 1 skein each.

Needles Size 9 (5.5 mm): 16" (40-cm) circular (cir) and set of 4 double-pointed (dpn). Adjust

needle size if necessary to obtain the correct gauge.

Notions Waste yarn; tapestry needle.

Gauge 16 sts and 24 rows = 4" (10 cm) in two-color stranded St st patt from chart worked in the rnd.

Note

This hat is knitted down from the crown to the lower edge of the brim. The crown is divided into 6 sections, each of which is increased by 1 stitch every other round. To make the hat smaller or larger, work fewer or more increase rounds. Remember to adjust the size of the pattern repeats to fit the total number of stitches in your customized version of the hat.

Hat

With brown and dpn, CO 6 sts. Place marker (pm) and join for working in the rnd; rnd begins at center back.

Rnd 1: Knit.

Rnd 2: *K1, yo; rep from * to end—12 sts.

Rnds 3, 5, and 7: Knit, working each yo through the back loop (tbl) to close up the holes.

Rnd 4: *K2, yo; rep from * to end—18 sts.

Rnd 6: *K3, yo, pm; rep from * to end, omitting placing a marker at the end of last rep because end-of-rnd marker is already in place—24 sts; 4 sts each in 6 marked sections.

Rnd 8: *Knit to marker, yo, slip marker (sl m); rep from * five more times—6 sts inc'd.

Rnd 9: Knit, working each yo tbl to close up the holes.

Rnds 10–29: Rep Rnds 8 and 9 ten more times—90 sts.

Change to Colorwork chart and work Rnds 1–20. *Note:* The chart shows the pattern as it will appear while you are working it; because the hat is worked from the top down, the chart will appear upside down from the way the hat looks when it is worn. When Rnd 20 of chart has been completed, knit 2 more rnds in brown. Work in garter st (purl 1 rnd, knit 1 rnd) for 4 rnds—piece measures about 9" (23 cm) from CO. Break yarn. **Earflaps:** Place first 8 sts on waste yarn, place next 20 sts on dpn for right earflap, place next 34 sts on waste yarn for front of hat, place next 20 sts on waste yarn for left earflap, place rem 8 sts on waste

yarn. With RS facing, join green to 20 sts on needle for left earflap. Working back and forth in rows on sts for right earflap only, cont as foll:

Rows 1–4: With green, knit.

Rows 5 and 6: With brown, knit.

Rows 7 and 8: With orange, knit.

Rows 9–12: With brown, knit.

Row 13: With green, k2, ssk, knit to last 4 sts, k2tog, k2—18 sts rem.

Row 14: With green, knit.

Row 15: With green, k2, ssk, knit to last 4 sts, k2tog, k2—16 sts rem.

Row 16: With green, knit.

Row 17: With orange, k2, ssk, knit to last 4 sts, k2tog, k2—14 sts rem.

Row 18: With orange, knit.

Row 19: With green, k2, ssk, knit to last 4 sts, k2tog, k2—12 sts rem.

Row 20: With green, knit.

Row 21: With orange, k2, ssk, knit to last 4 sts, k2tog, k2—10 sts rem.

Row 22: With orange, knit.

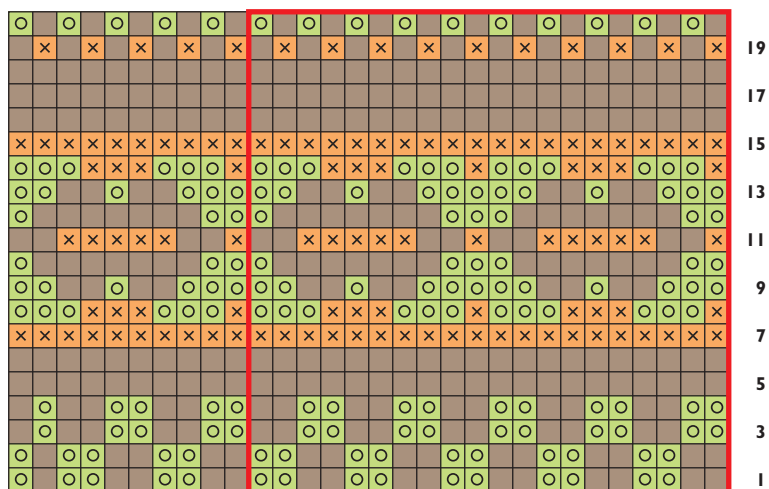
Row 23: With brown, k2, ssk, knit to last 4 sts, k2tog, k2—8 sts rem.

Row 24: With brown, knit.

Row 25: With brown, k2, ssk, k2tog, k2—6 sts rem.

Row 26: With brown, ssk, *k1, BO 1 st (1 st rem on right-hand needle); rep from * once more, k2tog, BO 1 st—1 st rem. Cut

Colorwork



■ brown × orange ○ green □ pattern repeat

yarn and draw through last st to fasten off. Return 20 held sts of left earflap to dpn and make another earflap the same way.

Finishing

Return 8 held sts at beg of hat rnd to cir needle. With RS facing, join green, k8, pick up and knit 34 sts around outer edge of right earflap, return next 34 held sts to needle and k34 for front of hat, pick up and knit 34 sts around outer edge of left earflap, return rem 8 held sts to needle and k8—118 sts. On the next rnd, BO all sts as if to purl. Cut two 12" (30.5-cm) strands of each color—6 strands total. With a tapestry needle, thread each strand through the top of the crown. Pull the ends even, and using 3 groups of 2 strands each, work a braid for 3½" (9 cm). With a separate strand of orange, wrap the end of the braid tightly about 1" (2.5 cm) from the end, tie off the wrap securely, and trim ends even. Cut six 30" (76-cm) strands of each color—18 strands total. Thread 3 strands of each color through end of one earflap, and braid for 6½" (16.5 cm) as for top of hat. Wrap and trim end of braid as for top of hat. Repeat for other earflap with rem 3 strands of each color. Weave in loose ends.



RIDGED HELMET HAT

Ann Budd, Senior Editor

Finished Size 21" (53.5 cm) circumference.

Yarn Knit Picks Andean Treasure (100% baby alpaca; 110 yd [100 m]/50 g): #23485 sunset (MC), 2 skeins; #23483 lagoon and #23489 peach, a few yards each.

Needles Size 3 (3.25 mm): 16" (40-cm) circular (cir) and set of 4 or 5 double-pointed (dpn). Adjust needle size if necessary to obtain the correct gauge.

Notions Marker; tapestry needle.

Gauge 24 sts and 48 rnds = 4" (10 cm) in ridged patt, worked in the rnd.

Hat

Crown: With MC and cir needle, CO 128 sts. Place marker (pm) and join for working in the rnd, being careful not to twist sts. [Knit 5 rnds, purl 2 rnds] 5 times. Knit 5 rnds, purl 1 rnd—piece should measure about 3½" (9 cm) from CO. **Shape top:** Keeping in ridged patt as established, work decs as foll, changing to dpn when necessary:

Dec rnd 1: *P6, p2tog; rep from *—112 sts rem.

Knit 5 rnds, purl 1 rnd.

Dec rnd 2: *P5, p2tog; rep from *—96 sts rem.

Knit 5 rnds, purl 1 rnd.

Dec rnd 3: *P4, p2tog; rep from *—80 sts rem.

Knit 5 rnds, purl 1 rnd.

Dec rnd 4: *P3, p2tog; rep from *—64 sts rem.

Knit 4 rnds.

Dec rnd 5: *K2, k2tog; rep from *—48 sts rem.

Purl 2 rnds.

Dec rnd 6: *K1, k2tog; rep from *—32 sts rem.

Knit 2 rnds.

Dec rnd 7: *K2tog; rep from *—16 sts rem.

Cut yarn, draw tail through rem loops 2 times, pull tight, and fasten off on side of hat that has more knit rnds than purl rnds.

Earflap: Turn hat inside out so that rev St st ridges dominate.

This is now the RS of the piece. Mark 38 sts each side of center back "seam" (end of rnd) of CO edge—76 sts marked for earflaps. Unroll rolled edge so that WS of edge is visible. With MC, cir needle, and working on WS into first row of purl bumps above CO edge, pick up and knit 1 st in each marked st—76 sts total. Do not join. Working back and forth in rows and keeping in ridged patt, [work 5 rows rev St st, work 2 rows St st] 2 times. Cont working 5 rows rev St st followed by 2 rows St st and *at the same time* dec 1 st each end of needle every row 11 times, ending with 5 rows of rev St st—54 sts rem. Do not BO. Cut yarn.

Edging: With RS facing, join MC to upper edge of left end of earflap (as seen with hat upside down), pick up and knit 21 sts along edge of earflap, k54 sts already on needle, pick up and knit 21 sts along other edge of earflap—96 sts total. Purl 1 row. Work 5 rows rev St st. BO all sts.

Finishing

Weave in loose ends. **Braided tassels:** Measure out and cut 36" (91.5 cm) each of the 3 colors. Hold the strands tog, fold in half, and tie an overhand knot near the fold. Anchor the knot and work the doubled strands in a 3-strand braid until braid measures about 7" (18 cm). Rep 2 times to make three 3-color braids. Pull ends of braids through center top of hat to inside and knot, tie tog in an overhand knot on outside, and secure ends on inside of hat.



ANDEAN EARFLAP HAT

Mary Jane Mucklestone, Photostylist

Finished Size 22" (56 cm) circumference.

Yarn Blue Sky Alpacas 100% Alpaca (100% alpaca; 110 yd [100 m]/50 g): #47 green, #30 blue sky (light blue), #307 turquoise, and #46 chartreuse, 1 skein each.

Needles Size 4 (3.5 mm): 16" (40-cm) circular (cir) and set of 5 double-pointed (dpn). Adjust needle size if necessary to obtain the correct gauge.

Notions Markers (m); tapestry needle.

Gauge 28 sts and 30 rows = 4" (10 cm) in two-color stranded St st from charts, worked in the round.

Earflaps

Outer earflap strip 1: With green, CO 6 sts, and knit 10 rows. Work 10 rows each of the foll colors in this order: turquoise, green, light blue, turquoise—five 10-row stripes completed; piece measures about 4½" (11.5 cm) from CO. **Point triangle:** With green, work short-rows (see page 7) to form triangle at lower point of earflap as foll:

Short-rows 1 and 2: K1, turn, sl 1 as if to purl (pwise), turn.

Short-rows 3 and 4: K2, turn, sl 1 pwise, k1, turn.

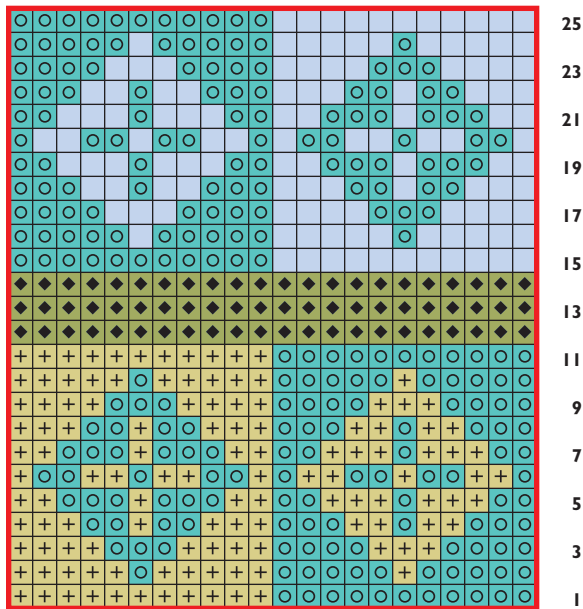
Short-rows 5 and 6: K3, turn, sl 1 pwise, k2, turn.

Short-rows 7 and 8: K4, turn, sl 1 pwise, k3, turn.

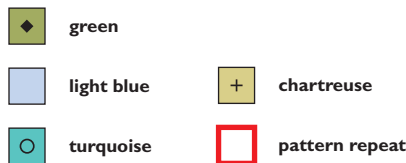
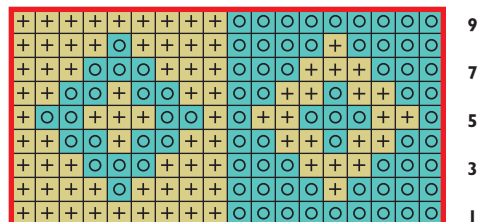
Short-rows 9 and 10: K5, turn, sl 1 pwise, k4, turn—10 rows (5 garter ridges) completed along longest edge of triangle. Working across all 6 sts, knit 10 rows each of the foll colors: light blue, green, turquoise, light blue, green—piece measures 10" (25.5 cm) from CO, measured along selvedge at outer edge of curved strip. BO all sts.

Outer earflap strip 2: Work as for outer strip 1, using colors in the foll order: CO and knit first 10 rows with green, knit

Andean Chart A



Andean Chart B



10 rows each light blue, turquoise, green, light blue, work 10-row point triangle same as for first earflap, then knit 10 rows each turquoise, light blue, green, turquoise, green. BO all sts. **Earflap center:** (make one for each earflap) Using cir and chartreuse, with RS of outer strip facing, pick up 25 sts along the inner curved edge of strip (1 st for every garter ridge in first 5 stripes), place marker (pm), skip the point triangle, and pick up 25 sts along rest of inner curved edge to end (1 st for every garter st ridge in last 5 stripes)—50 sts total. With chartreuse, knit 1 WS row. Cont as foll:

Row 1: (RS; dec row) With green, knit to 3 sts before marker, [sl 1, k2tog, pss0], slip marker (sl m), k3tog, knit to end—46 sts rem.

Row 2: With green, knit.

Rows 3 and 4: With light blue, rep Rows 1 and 2—42 sts rem.

Rows 5 and 6: With turquoise, rep Rows 1 and 2—38 sts rem.

Rows 7 and 8: With green, rep Rows 1 and 2—34 sts rem.

Rows 9 and 10: With turquoise, rep Rows 1 and 2—30 sts rem.

Rows 11–16: With chartreuse, rep Rows 1 and 2 three times—18 sts rem.

Arrange sts evenly on 2 dpn with 9 sts on each needle. Fold piece in half with right sides touching and needles held parallel. With

spare dpn and chartreuse, use three-needle bind-off method (see page 7) to BO sts tog. Work a second earflap center the same way for other strip.

Hat

With green, cir needle, and RS of earflaps facing, pick up and knit 36 sts along top edge of one earflap (the edge opposite the point triangle), use the backward loop method (see page 7) to CO 24 sts for back of head, pick up and knit 36 sts along top of second earflap, use the backward loop method to CO 50 sts across forehead—146 sts total. Pm and join for working in the rnd. Work k1, p1 rib for 7 rnds, inc 8 sts evenly spaced on last rnd—154 sts. Work Rnds 1–25 of Andean Chart A in two-color stranded St st. When Chart A has been completed, change to green and knit 1 rnd. *Next rnd:* *K4, k2tog, k3, k2tog; rep from *—126 sts rem. Knit 1 rnd with green. Work Rnds 1–9 of Andean Chart B in two-color stranded St st. When Chart B has been completed, work top of crown as foll, changing to dpn when necessary:

Rnd 1: With green, knit.

Rnd 2: With green, *[K2tog] 4 times, k1; rep from *—70 sts rem.

Rnd 3: With green, knit.

Rnd 4: *K5 chartreuse, k5 light blue; rep from *.

Rnd 5: *With chartreuse [ssk, k1, k2tog]; with light blue [ssk, k1, k2tog]; rep from *—42 sts rem.

Rnd 6: *K3 chartreuse, k3 light blue; rep from *.

Rnd 7: With green, *k1, k2tog; rep from *—28 sts rem.

Rnd 8: With green, *k2tog; rep from *—14 sts rem.

Rnd 9: With green, rep Rnd 8—7 sts rem.

Finishing

Cut yarn, leaving a 6" (15-cm) tail. Thread tail onto a tapestry needle, draw through rem sts, and pull tight to close top of hat. Weave in loose ends. Block lightly



ARMY GIRL EARFLAP

Lisa Shroyer, Assistant Editor

Finished Size 22½" (57 cm) circumference.

Yarn Misti International Chunky Baby Alpaca (100% baby alpaca; 108 yd [99 m]/100 g): #2L 474 lemon/rose moulinette (cream/rose mix), 2 skeins.

Needles Size 7 (4.5 mm): 16" (40-cm) circular (cir) and set of 4 double-pointed (dpn) needles. Adjust needle size if necessary to obtain the correct gauge.

Notions Tapestry needle; stitch markers.

Gauge 16 sts and 25 rows = 4" (10 cm) in garter rib pattern (k1, p1 rib on RS rows; purl on WS rows).

Notes

For brim, always knit the first and last st of RS rows, and purl the first and last st of WS rows for selvedge stitches; do not work the selvedge stitches into pattern while shaping the brim.

Work the M1 brim increases so as to maintain the established k1, p1 pattern of the RS garter rib rows as much as possible. If a purl stitch is needed to maintain the pattern, M1 pwise, and if a knit is needed, M1 kwise (see page 6).

All brim decreases are worked as if to knit, either as k2tog or ssk; decreases are not worked in pattern.

Hat

Brim: With cir needle, CO 65 sts. Do not join. Work back and forth in rows as foll:

Row 1: (RS) K1 (selvedge st; see Notes), *k1, p1; rep from * to last 2 sts, k1, k1 (selvedge st).

Row 2: P12, place marker (pm), p20, pm, p1 (center back st), pm, p20, pm, p12.

Row 3: K1, M1 pwise (see page 6), [k1, p1] 4 times, k1, ssk, slip marker (sl m), k2tog, [p1, k1] 9 times, M1 pwise, sl m, p1 (center back st), sl m, M1 pwise, [k1, p1] 9 times, ssk, sl m, k2tog, [k1, p1] 4 times, k1, M1 pwise, k1.

Row 4: Purl.

Rep Rows 3 and 4 four more times (see Notes); when you finish, there will be 3 purl sts tog at center back when viewed with RS facing. On the next RS row, change the center back st and 1 of the paired dec sts into a purl st to maintain rib patt. Work even in garter rib patt (k1, p1 rib on RS rows; purl on WS rows) until earflaps measure 4" (10 cm) from CO, measured straight up along decrease line at deepest point, ending with a WS row. With RS facing, use the cable method (see page 6), to loosely CO 27 sts onto left-hand needle for forehead. *Next row:* (RS) Removing old markers as you come to them, work *p1, k1; rep from * across all sts, place new marker to indicate end of rnd, and join for working in the rnd, being careful not to twist sts—92 sts total; rnd begins at start of sts CO for forehead. Knit 1 rnd.

Rnd 1: *P1, k1; rep from * to end.

Rnd 2: Knit.

Rep the last 2 rnds until piece measures 1¼" (3.2 cm), from joining rnd, ending with Rnd 2. *Dec rnd:* [P1, k1] 5 times, p1, ssk, p1, k2tog, work in patt to end—90 sts; 2 sts dec'd in center of forehead sts. Cont even in patt until piece measures ¾" (8.5 cm) from joining rnd, or about 7¼" (18.5 cm) from deepest point of earflaps, ending with Rnd 2.

Crown: Changing to dpn when necessary, cont as foll:

Rnd 1: (Rnd 1 of patt) P1, k1, p1, *k2tog, pm, k1, ssk, work 10 sts in established patt; rep from * 4 more times, k2tog, pm, k1, ssk, [k1, p1] 3 times, k1—78 sts rem.

Rnds 2, 4, and 6: Knit.

Rnd 3: P1, k1, *k2tog, sl m, k1, ssk work 8 sts in patt; rep from * 4 more times, k2tog, sl m, k1, ssk, [p1, k1] 3 times—66 sts rem.

Rnd 5: P1, *k2tog, sl m, k1, ssk, work 6 sts in patt; rep from * 4 more times, k2tog, sl m, k1, ssk, [k1, p1] 2 times, k1—54 sts rem.

When Rnd 5 has been completed, there will be 2 sts at the beg of the rnd before the first marker, so you don't need to reposition the marker yet.

Rnd 7: *K2tog, sl m, k1, ssk, work in patt to 2 sts before m; rep from * 4 more times, k2tog, sl m, k1, ssk, work in patt to end—42 sts rem.

Rnd 8: Knit last st of rnd—2 sts before first dec m.

Rnds 9–10: Rep Rnds 7 and 8.

Rnd 11: Rep Rnd 7—18 sts rem.

Rnd 12: *K1, k2tog; rep from *—12 sts rem.

Rnd 13: Knit.

Rnd 14: *K2tog; rep from *—6 sts rem.

Cut yarn, thread tail on a tapestry needle, draw through rem sts twice, pull tight, and fasten off to WS of hat.

Finishing

Weave in rem ends. Block top of hat lightly to flatten point at top of crown, but avoid blocking earflaps, as this will negate the shaping of the flap decreases. **I-cord front edging:** Turn hat upside down and inside out with straight forehead section facing you. Attach yarn to edge of earflap, about 4 rows away from corner where forehead meets earflap, and 2 sts in from edge of flap. With cir and WS of hat facing, pick up and knit 4 sts along side of earflap to corner, angling the pick-up slightly so that it begins 2 sts from the earflap selvedge, and ends at the selvedge in the corner; pick up and knit 27 sts from sts CO for forehead; pick up and knit 4 sts along side of earflap, angling the pick-up so it begins at the selvedge in the corner, and ends 2 sts in from earflap selvedge—35 sts. Break yarn. With WS of hat still facing, slide sts back to beg of cir, and rejoin yarn to beg of picked-up sts. Work 4-st attached I-cord as foll: *K3, ssk (1 st joined), with same side of work facing, return 3 sts just worked to left-hand needle, bring yarn around behind work in position to knit again; rep from * until 4 sts rem, k4, bring yarn around behind work, BO 4 sts. Cut yarn, leaving a 12" (30.5-cm) tail. With tail threaded on a tapestry needle, sew end of I-cord to WS of earflap to match appearance of beg of I-cord. **I-cord ties:** (make 2) With dpn and RS facing, pick up and knit 4 sts at bottom point of earflap (2 sts on each side of decrease line). Work 4-st I-cord (see page 7) until tie measures 5" (12.5 cm) or desired length. BO all sts. Cut three 7–8" (18–20 cm) strands of yarn. With strands held tog, use tapestry needle to thread strands through BO end of I-cord. Pull ends of strands even, and holding all 6 ends tog, secure with 2 or 3 overhand knots placed close together at end of tie. Trim ends.



PENOBSCOT BAY HAT

Cyrene Slegona, Editorial Advisor

Finished Size 19¼" (49 cm) circumference; will stretch to 23" (58.5 cm).

Yarn Green Mountain Spinnery Mountain Mohair (70% wool, 30% mohair; 140 yd [128 m]/2 oz [57 g]): #5-E edelweiss (white), #5-PE peacock (dark blue), #5-WG winter-green (dark green), and #5-IB ice blue (light blue), 1 skein each.

Needles Size 7 (4.5 mm): 16" (40-cm) circular (cir) and set of 4 double-pointed (dpn). Adjust needle size if necessary to obtain the correct gauge.

Notions Tapestry needle.

Gauge 20 sts and 35½ rows = 4" (10 cm) in hobnail st patt worked in the rnd.

Stitch Guide

Hobnail Stitch: (multiple of 4 sts)

Using background colors according to directions below, work as foll:

Rnds 1 and 2: Knit with background color.

Rnds 3 and 4: *Sl 2 sts as if to purl with yarn in back (pwise wyb), k2 with white; rep from *.

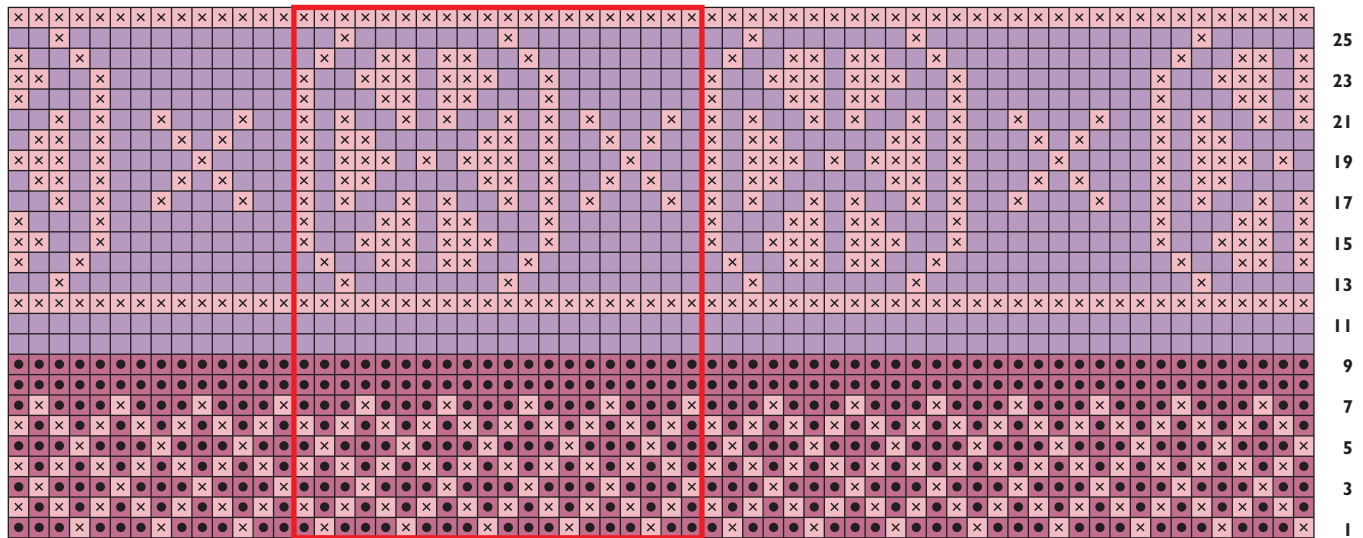
Rnds 5 and 6: Knit with background color.

Rnds 7 and 8: *K2 with white, sl 2 sts pwise wyb; rep from *.

Rnds 9 and 10: Knit with background color.

Repeat Rows 1–10 for pattern.

Berry



Hat

With dark green and cir needle, *loosely* CO 96 sts. Place marker (pm) and join for working in the rnd, being careful not to twist sts. Work even in St st until piece measures 1" (2.5 cm) from CO. Purl 1 rnd for turning ridge. Knit 5 more rnds. Work Rnds 1–10 of hobnail st (see Stitch Guide) 6 times, working each repeat using a different background color in the foll order: wintergreen, light blue, dark blue, light blue, dark blue, light blue—60 patt rnds completed; 65 rnds total from turning ridge; piece measures about 7½" (19 cm) from turning ridge. Cont with light blue, and changing to dpn when necessary, shape crown as foll:

Rnd 1: *K6, k2tog; rep from *—84 sts rem.

Even-numbered Rnds 2–10: Knit.

Rnd 3: *K5, k2tog; rep from *—72 sts rem.

Rnd 5: *K4, k2tog; rep from *—60 sts rem.

Rnd 7: *K3, k2tog; rep from *—48 sts rem.

Rnd 9: *K2, k2tog; rep from *—36 sts rem.

Rnd 11: *K1, k2tog; rep from *—24 sts rem.

Rnds 12 and 13: *K2tog; rep from *—6 sts rem after completing Rnd 13.

Break yarn, leaving a 12" (30-cm) tail. Thread tail on tapestry needle, draw through rem sts, pull snugly to close top of hat, and weave in end on WS. **Earflaps:** (make 2) With dark green and dpn, CO 20 sts. Work back and forth in St st until piece measures 2" (5 cm) from CO, ending with a WS row. Shape earflap as foll:

Rows 1 and 3: (RS) K2, k2tog, knit to last 4 sts, ssk (see page 6), k2—2 sts dec'd each row; 16 sts rem after completing Row 3.

Even-numbered Rows 2–14: Purl.

Rows 5, 7, 9, 11, and 13: K2, ssk, knit to last 4 sts, k2tog, k2—2 sts dec'd each row; 6 sts rem after completing Row 13.

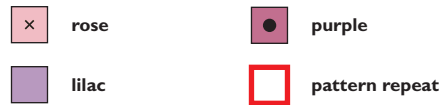
Row 15: K2, k2tog, k2—5 sts rem.

Row 16: Knit 1 WS row for turning ridge.

Rows 17–19: Work even in St st.

Row 20: Knit 1 WS row.

BO all sts. Cut yarn, leaving an 8" (20-cm) tail. Fold end of earflap along turning ridge for hem, and with tail threaded on a tapes-



try needle slipstitch BO edge to WS. Make second earflap the same as the first.

Finishing

Fold hat facing to WS along turning ridge. With yarn threaded on a tapestry needle, slip-stitch facing in place loosely so hem can stretch when hat is worn. Try on hat to determine best location for earflaps; earflaps shown are about 5½" (14 cm) apart at back of hat, and 6½" (16.5 cm) apart at front of hat. Sew CO edge of earflap even with the line of slip-stitches on WS of hat. Invisibly tack earflap to hat along hat turning ridge. **Pom-pom:** With white, make a pom-pom about 1½" (3.8 cm) in diameter (see page 7). Sew pom-pom securely to top of hat. Weave in ends.



BERRY HAT

Meema Spadola, Editorial Advisor

Finished Size 21" (53.5 cm) circumference.

Yarn Manos del Uruguay Wool (100% wool; 138 yd [126 m]/100g): #61 rhubarb (light rose), #50 heather (medium lilac), and #57 raspberry (dark purple), 1 skein each. Yarn distributed by Design Source.

Needles Size 8 (5 mm): 16" (40-cm) circular (cir) and set of 4 double-pointed (dpn). Adjust needle size if necessary to obtain the correct gauge.

Notions Stitch holders; markers (m; one in a different color to denote end-of-rnd, optional); tapestry needle; size H/8 (5 mm) crochet hook.

Gauge 16 sts and 20 rows = 4" (10 cm) in two-color stranded St st from chart, worked in the rnd.

Hat

Earflaps: With purple and cir needle, CO 6 sts. Do not join for working in the rnd. Purl 1 WS row. Cont in St st, *work 2 rows even, then inc 1 st at each end of foll row; rep from * 4 more times—16 sts. Purl 1 WS row—17 rows completed; piece measures about 3½" (9 cm) from CO. Cut yarn, place sts on holder, and set aside. Make a second earflap in the same manner. **Brim:** With purple, use the backward loop method (see page 7) to CO 12 sts for half of hat back, place marker (pm), return held 16 earflap sts to needle and knit across them, pm, use the backward loop method to CO 28 sts for forehead, pm, return 16 held earflap sts to needle and knit across them, pm, use the backward loop method to CO 12 sts for other half of hat back, pm to denote end of rnd at center back (if desired, use a different color marker for end-of-rnd), and join for working in the rnd—84 sts total. With purple, knit 1 rnd. Work Rnds 1–26 of Berry chart. When chart has been completed, knit 1 rnd lilac. **Next rnd:** With lilac, *k10, k2tog; rep from *—77 sts rem. Change to rose and, shape top of crown as foll: **Rnd 1:** *K9, k2tog; rep from *—70 sts rem. **Rnd 2:** *K8, k2tog; rep from *—63 sts rem. **Rnd 3:** *K7, k2tog; rep from *—56 sts rem. **Rnds 4–9:** Cont in this manner, working 1 st less before the k2tog in each rnd—14 sts rem after completing Rnd 9. **Rnd 10:** *K2tog; rep from *—7 sts rem. Cut yarn, thread tail through rem sts, pull tight, and fasten off to WS.

Finishing

Weave in loose ends. Block lightly. **Edging:** With crochet hook, RS facing, and beg at center back, work 1 row of single crochet (sc; see page 7) around lower edge of hat. Join to beg sc with a slip st, and fasten off. **Ties:** (make 2) Cut 3 strands of yarn (one of each color) 85" (216 cm) long, or about 5 times

the desired finished length of tie. With strands held tog, use tapestry needle to thread strands through center of CO edge of earflap. Pull ends of strands even, anchor the hat with a heavy book, and make twisted cord (see page 7). Secure cord with an overhand knot about 1½" (3.8 cm) from the end. Trim loose ends of tie for small tassels as shown.



ENCHANTED EVENING EAR COVERING

Sandi Wiseheart, Managing Editor

Finished Size 22" (56 cm) circumference, and 9½" (24 cm) high, unstretched.

Yarn Kollage Yarns Serenity (60% merino wool, 25% silk, 5% wool, 5% polyamide, 5% viscose; 150 yd [137 ml]/106 g): dusty blue, 1 skein.

Needles Size 13 (9 mm): 16" (40-cm) circular (cir). Adjust needle size if necessary to obtain correct gauge.

Notions Marker (m); tapestry needle.

Gauge 11 sts and 16 rows = 4" (10 cm) in St st worked in the round.

Ear Covering

Using the knitted method (see page 7), CO 60 sts. Before joining, deliberately twist one end of the CO sts a full 360 degrees around the needle to produce a moebius shape. An easy way to do this is to grasp the tail at the beginning of the CO row, pull it up and over the needle, then around to the bottom again. Be sure to twist the stitches only once around the needle. Place marker (pm), and join for working in the rnd. Knit 1 rnd. Purl 1 rnd. Knit every rnd until about 5 yd (4.5 meters) of yarn remains. Purl 1 rnd. **Next rnd:** BO very, very loosely until 1 st rem on right needle, and no sts rem on left needle. With right needle tip, pick up 1 st kwise from the first BO st at beg of rnd, and BO last st over the picked-up st. Cut yarn and draw tail through last st to fasten off. Weave in ends. Do not block. ∞

Cable Cast-On

Begin with a slipknot and one knitted cast-on stitch if there are no established stitches. Insert right needle between first two stitches on left needle (Figure 1). Wrap yarn as if to knit. Draw yarn through to complete stitch (Figure 2) and slip this new stitch to left needle as shown (Figure 3).



Figure 1

Figure 2

Figure 3

Ssk Decrease

Slip two stitches knitwise one at a time (Figure 1). Insert point of left needle into front of two slipped stitches and knit them together through back loops with right needle (Figure 2).

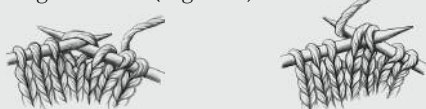


Figure 1

Figure 2

Raised (M1) Increases



Figure 1

Figure 2

With left needle tip, lift strand between needles from front to back (Figure 1). Knit lifted loop through the back (Figure 2).

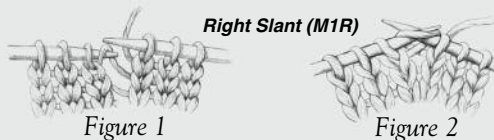


Figure 1

Figure 2

With left needle tip, lift strand between needles from back to front (Figure 1). Knit lifted loop through the front (Figure 2).

Purlwise (M1P)



Figure 1

Figure 2

With left needle tip, lift strand between needles, from back to front (Figure 1). Purl lifted loop (Figure 2).

Three-Needle Bind-Off

Place stitches to be joined onto two separate needles. Hold them with right sides of knitting facing together. Insert a third needle into first stitch on each of the other two needles and knit them together as one stitch. *Knit next stitch on each needle the same way. Pass first stitch over second stitch. Repeat from * until one stitch remains on third needle. Cut yarn and pull tail through last stitch.



Short Rows: Wrapping a Stitch



Figure 1



Figure 2

Work to turn point, slip next stitch purlwise to right needle. Bring yarn to front (Figure 1). Slip same stitch back to left needle (Figure 2). Turn work and bring yarn in position for next stitch, wrapping the stitch as you do so. *Note:* Hide wraps in a knit stitch when right side of piece is worked in a knit stitch. Optional: Leave wrap if the purl stitch shows on right side. Hide wraps as follows: *Knit stitch:* On right side, work to just before wrapped stitch. Insert right needle from front, under the wrap from bottom up, and then into wrapped stitch as usual. Knit them together, making sure new stitch comes out under wrap. *Purl stitch:* On wrong side, work to just before wrapped stitch. Insert right needle from back, under wrap from bottom up, and put on left needle. Purl them together.

Insert right needle from front, under the wrap from bottom up, and then into wrapped stitch as usual. Knit them together, making sure new stitch comes out under wrap. *Purl stitch:* On wrong side, work to just before wrapped stitch. Insert right needle from back, under wrap from bottom up, and put on left needle. Purl them together.

I-Cord

With double-pointed needle, cast on desired number of stitches. *Without turning the needle, slide the stitches to other end of the needle, pull the yarn around the back, and knit the stitches as usual; repeat from * for desired length.



Backward Loop Cast-On

*Loop working yarn and place it on needle backward so that it doesn't unwind. Repeat from *.



Twisted Cord

Cut several lengths of yarn about five times the desired finished cord length. Fold the strands in half to form two equal groups. Anchor the strands at the fold by looping them over a doorknob. Holding one group in each hand, twist each group tightly in a clockwise direction until they begin to kink. Put both groups in one hand, then release them, allowing them to twist around each other counterclockwise. Smooth out the twists so that they are uniform along the length of the cord. Knot the ends.

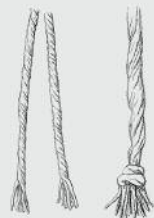


Figure 1 Figure 2

Single Crochet (sc)



Figure 1

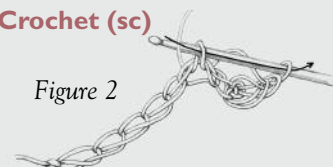


Figure 2

Insert hook into an edge stitch, yarn over hook and draw a loop through stitch (Figure 1), yarn over hook and draw it through both loops on hook (Figure 2).

Pom-Pom

Cut two circles of cardboard, each $\frac{1}{2}$ " (1.3 cm) larger than desired finished pom-pom width. Cut a small circle out of the center and a small wedge of the side of each circle (Figure 1). Tie a strand of yarn between the circles, hold circles together and wrap with yarn—the more wraps, the thicker the pom-pom. Cut between the circles and knot the tie strand tightly (Figure 2). Place pom-pom between two smaller cardboard circles held together with a needle and trim the edges (Figure 3). This technique comes from *Nicky Epstein's Knitted Embellishments*, Interweave Press, 1999.



Figure 1



Figure 2

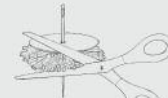


Figure 3

Knitted Cast-On

Place slipknot on left needle if there are no established stitches. *With right needle, knit into first stitch (or slipknot) on left needle (Figure 1) and place new stitch onto left needle (Figure 2). Repeat from *, always knitting into last stitch made.



Figure 1



Figure 2



RISK-FREE TRIAL OFFER

Discover knitwear designs that will capture your imagination.

You don't have to be a designer or a knitting pro to make beautiful knitted garments and accessories, and you don't have to hunt all over for inspiring designs.

From cover to cover, *Interweave Knits* magazine gives you great projects, from the beginner to the advanced. Every issue is packed full of captivating smart designs, step-by-step instructions, easy-to-understand illustrations, plus well-written, lively articles sure to inspire.

Take advantage of this special risk-free offer today!

www.interweave.com/go/knitsJPDP6