

Packet *noun* (pa-kæt)
1. Packets of data **2.** Packet switching, packet sniffer, packet forwarding

PacketTrap *noun* (pa-kæt-trap)
1. Network troubleshooting and problem solving solutions **2.** Convenient, affordable alternative to HP Openview, IBM / Tivoli, CA, EMC **3.** Complete network visibility

Trap *noun, verb* (trap)
1. A type of PDU used to report an alert or other asynchronous event about a managed subsystem

Company

San Francisco-based PacketTrap Networks is a leading provider of enterprise-level network management solutions that are effective, easy-to-use, and affordable. The Company's solutions empower network administrators of single and multi-site networks to easily troubleshoot, remediate, monitor and diagnose network problems. Both of PacketTrap's products, PacketTrap Perspective™ and pt360 Tool Suite, have received rave reviews from the IT community and are known for their ability to solve even the most complex network problems from a single interface.

Our Commitment

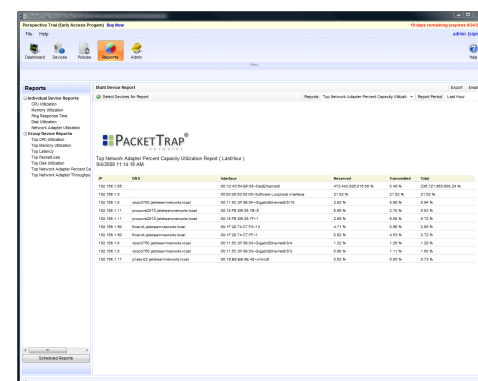
PacketTrap Networks was founded on the premise that existing network management offerings are point products that lack integration and correlation, are too complex and expensive and/or are poorly supported. We are committed to providing you with tool suites, platforms and other solutions that are developed with the direct assistance, feedback and input from the IT community. We commit to providing the actionable data you want, when you want it, and how you want it. Our mission is to provide solutions that make network management more affordable, effective and easy-to-use.

Products

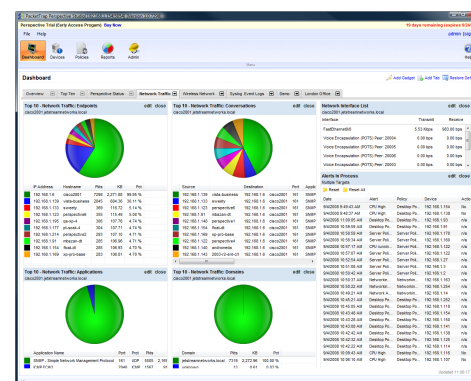
PacketTrap Perspective™ is a comprehensive and affordable network troubleshooting and remediation solution for single and multi-site networks. It solves the problems associated with bandwidth, performance, and connectivity and allows you to take back control of your network. Perspective™ auto-discovers system resources and their metrics, including hardware, operating systems, virtualization, databases, middleware, applications, and services. Application monitoring is also included.

Perspective Modules extend the capabilities Perspective to include deep traffic inspection, wireless networks and VoIP infrastructure. Modules are Traffic Flow Analyzer for NetFlow, J-Flow, and S-Flow, Wireless Monitoring, and VoIP Monitoring.

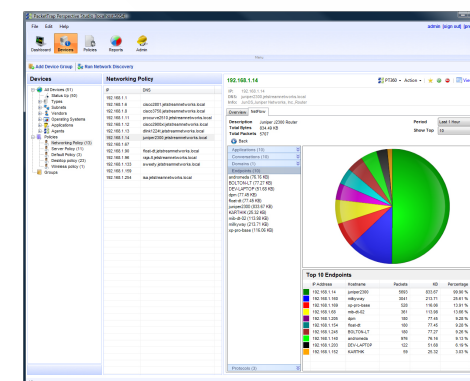
pt360 Tool Suite consolidates dozens of network diagnostic and monitoring tools into a single, integrated interface. Alerts and Notification enables IT Admins to quickly and easily configure powerful alerts to respond to hundreds of different network scenarios. pt360 Tool Suite also includes Cisco configuration management, server and application monitoring, open source and third party integration, a robust encrypted credential store, the ability to save and flow results between tools, deep network discovery, and syslog server capabilities. The powerful solution takes less than 10 minutes to install and allows users to control even the most complicated network.



Reports & Alerts – Automatic alerts allow IT administrators to resolve network issues before users or customers are impacted. Customizable reporting based on specific time periods or events.



Monitoring Dashboard – summary display of key performance indicators like CPU load, traffic, packet loss, latency and event logs.



Network Traffic Flow – visibility into traffic network patterns and usage. Available for Cisco NetFlow, Juniper J-Flow, and sFlow.

Management Team

- Steve Goodman
CEO
- Michael Blonsky
VP Operations
- Matthew Bolton
VP Products
- Sal Sferlazza
Chief Technical Officer
- Anna Yen
VP Marketing and Corporate Development

Board of Directors / Advisors

- Doug Brockett
EVP SonicWALL
- Dean Drako
CEO Barracuda Networks
- David Drummond
EVP Google
- Vivek Mehra
Partner August Capital

Milestones

- 10/07 PacketTrap raises Series A financing
- 11/07 PacketTrap unveils first product: Free pt360 Tool Suite for network diagnostics
- 12/07 PacketTrap surpasses 2,000 new users in one week
- 12/07 PacketTrap announces advisory board of industry leaders
- 03/08 PacketTrap unveils pt360 Tool Suite PRO
- 07/08 PacketTrap users reach one million tool runs
- 09/08 PacketTrap unveils monitoring and troubleshooting solution: Perspective

Corporate Fact Sheet

For more information:
 Email Sales@PacketTrap.com
 or dial (415) 348-0700

PacketTrap Networks
 118 2nd Street, 6th Floor
 San Francisco, CA 94105

www.PacketTrap.com