

The logo for the Wildlife Conservation Society, featuring the text "WILDLIFE CONSERVATION SOCIETY" in yellow, bold, uppercase letters. The text is set against a dark teal background with a white, cloud-like or floral pattern.

## **ROLE OF WILDLIFE CONSERVATION SOCIETY IN MYANMAR (WCS MYANMAR PROGRAM)**

### *Talk Outline*

Background of the program

Current on-going activities

## WCS, International

- ◆ At “Bronx Zoo”, New York in USA, the “New York Zoological Society” (NYZS) was established for educating the public about wildlife in April 1895.
- ◆ The name of the society was changed from “New York Zoological Society” to “Wildlife Conservation Society” in 1993 to indicate its interest in wildlife conservation work all over the world.
- ◆ Currently WCS is running over 300 wildlife conservation projects with the help of 60 scientists and 100 researchers in Asia, Africa and Latin America.

### MISSION

WCS Saves Wildlife and Wildlands by Understanding and Resolving Critical Problems that Threaten Key Species and Large, Wild Ecosystems Worldwide.

## WCS, Myanmar

- ◆ Dr. Alan Rabinowitz initiated the program by signing the first MoU with the Forest Dept., the Ministry of Forestry in 1993.
- ◆ The second MoU was signed in 1997 for 5 years up to 2002.
- ◆ The third MoU was signed in 2002 for 5 years up to 2007.

### GOAL OF WCS MYANMAR PROGRAM

To protect wildlife and wild lands collaboratively with Ministry of Forestry and other relevant Ministries and organizations through adaptive conservation strategies based on rigorous science.

WCS provides technical assistant and financial assistant to Forest Department.

Current main activities:

1. Basic wildlife training & International training
2. Small research grant
3. Park development
4. Expedition to explore new protected areas
5. Coordination with other NGOs
6. Environmental education
7. Tiger, Dolphin, Turtles & Tortoises conservation
8. Remote Sensing and GIS
9. Research projects;
  - 9.1. Gibbon, Elephant surveys
  - 9.2. Herpetology survey
  - 9.3. Whale & Dolphin survey (RoD with Dept. of Fisheries)
  - 9.4. Northern forest complex research

Basic wildlife conservation training & International training



- More than 400 NWCD staff working in 20 protected areas have been trained.
- The training program is continued.

## Small research grant program



- For NWCD staff, students and teachers from Universities to enhance research skill in wildlife conservation.
- A total of 121 grants have been awarded at present.
- A grant program is continued.



## Park development



- Meet the staff of protected area
- Visit to the field.
- Decide what their needs are.
- Provide assistance
- 4 protected areas selected for park development
  - Hkakaborazi National Park
  - Hukaung Tiger Reserve
  - Hponkanrazi Wildlife Sanctuary
  - Bumphabum Wildlife Sanctuary

### Expedition to explore new protected areas

- Biological expedition was started in 1994 to explore potential areas for protection.
- 22 expedition trips had been made.
- Based on those expeditions, additional 6 new protected areas have been established by FD & DoF.

### Coordination with other NGOs

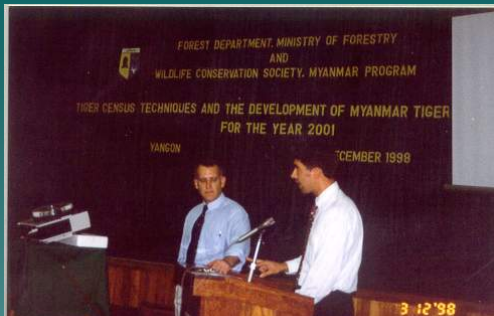
- WCS Myanmar Program is cooperating with other NGOs like SI, CAS, ICF, JWBS, ICIMOD, Birdlife International etc. in order that conservation activities could be integrated and developed in the country.

## Environmental Education

Environmental Education Center in Putao



## Tiger survey project



- Tiger survey project was conducted for 3 years (1999-2002)
- 17 sites were selected for the whole country.
- The fund was granted by NFWF/STF and WCS.

- Based on collected data, National Tiger Action Plan (NTAP) was developed and submitted to the Forest Department and the Ministry.
- Follow-up tiger conservation has been conducting.



### Tiger Conservation in Hukaung

**Hukaung Tiger Reserve**

Scale: 1:50,000  
Area: 1,811 sq. km

**Towns:**  
 - International Boundary  
 - State and District Boundary  
 - Township Boundary  
 - Hukaung Tiger Reserve  
 - Headquarter  
 - Guard Station  
 - WSSN Check

ဟူးကောင်တောကြားထဲရှိလိမ်းခရေစုယ်ခေါ်  
 သတိုးဇေယျာမင်းခေမာန်ချက်  
 ကုက္ကလည် ရှားမီးရှို့တန်းတို့အဖြစ်နှိုင်း  
 သောလူလိပ်ပုရွက်များ ပြိုပျက်စေသည့်အခါ  
 ဖြစ်ပေါ်လာသည့်အခါ ယခုအခါတွင်လည်း  
 အခါရိုက်မှုများကြောင့် ကမ္ဘာ့အမွေ ဖြစ်  
 ခံရောက်ရှိလာခဲ့သော ဟူးကောင်တောကြား  
 ကို ထိခိုက်စေခဲ့ပါသည်။  
 အထူးသဖြင့် ဟူးကောင်တောကြား  
 တွင် ဟူးကောင်တောကြားထဲရှိ  
 တိရစ္ဆာန်များကို ထိခိုက်စေခဲ့ပါသည်။  
 ဟူးကောင်တောကြားထဲရှိ  
 တိရစ္ဆာန်များကို ထိခိုက်စေခဲ့ပါသည်။  
 ဟူးကောင်တောကြားထဲရှိ  
 တိရစ္ဆာန်များကို ထိခိုက်စေခဲ့ပါသည်။

သစ်စတင်ပြန်လှူ

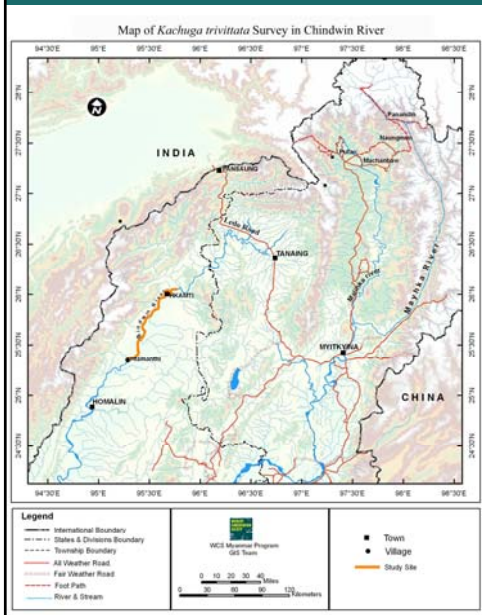
## Herpetology survey



- Herpetology program was started in 1999.
- In 2000, Led by Dr. Steve Platt, many places were visited to study Myanmar turtles and tortoises and findings were reported to the Ministry of Forestry.

- Based on the reports, the FD took action to develop two areas "Minsontaung and Myaleiktaung" as National Startortoise Sanctuaries.
- In 2001, Turtle breeding training was given to NWCD staff, staff of Yangon and Mandalay Zoos and teachers from Mandalay University

## Saving the Myanmar Roofed Turtles, Myanmar Peacock Soft Shell & Myanmar Narrow Headed Soft Shell Turtles in upper Chindwin





**Irrawaddy Dolphin Surveys**



2002 The whole Ayeyawady river  
 2003/04 Between Mandalay and Bhamo  
 2005 Between Mandalay and Kyaukmyaung  
 2006 Between Mandalay and Bhamo

**Whale and Dolphin Survey**

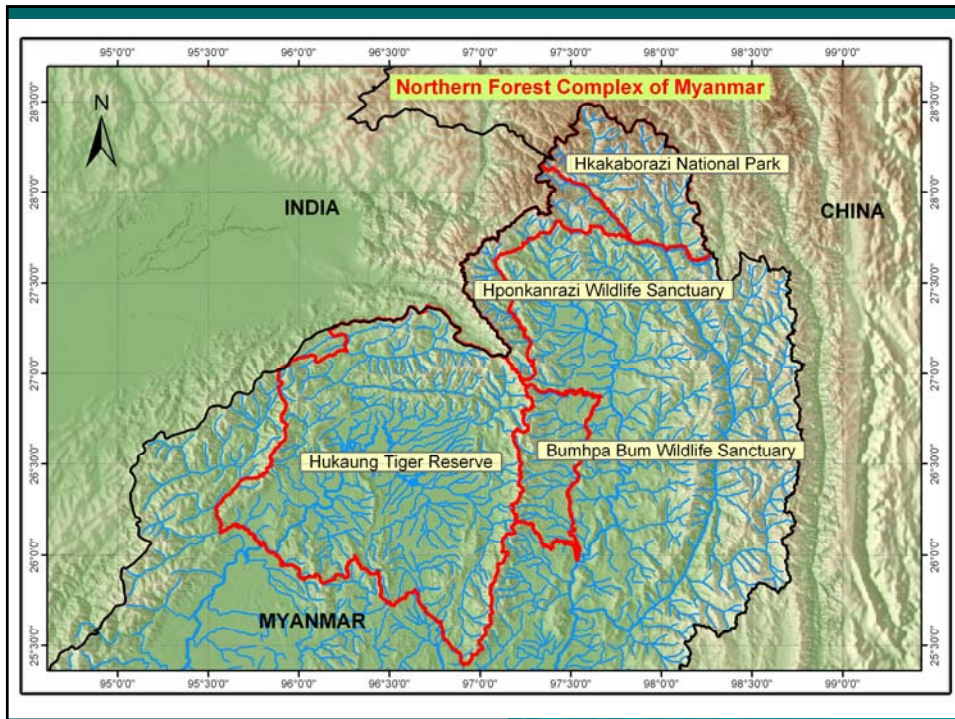


2005 Between Kawthoung and Myeik

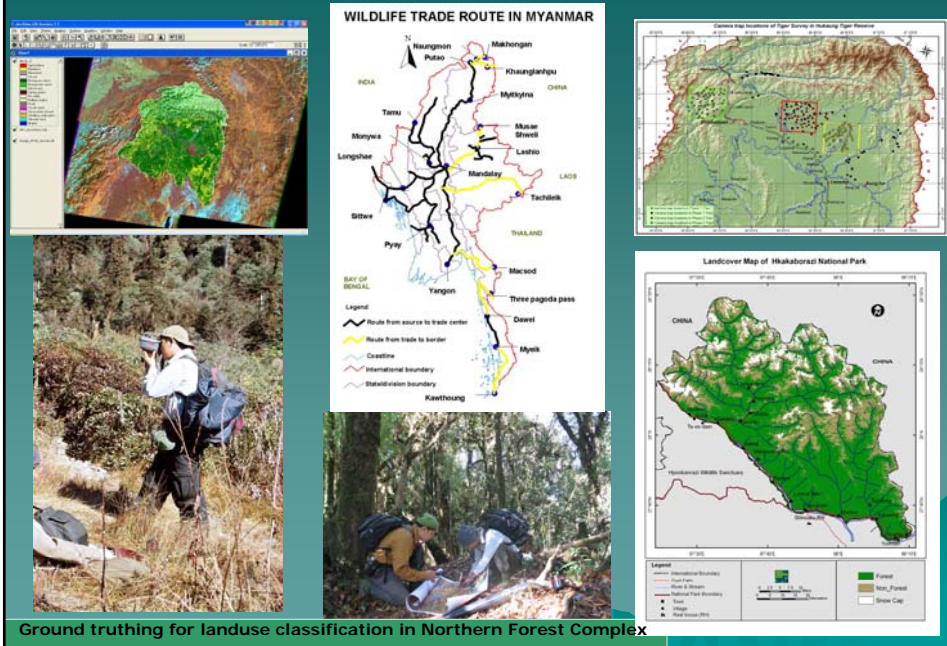
**Irrawaddy Dolphin Protected Area**



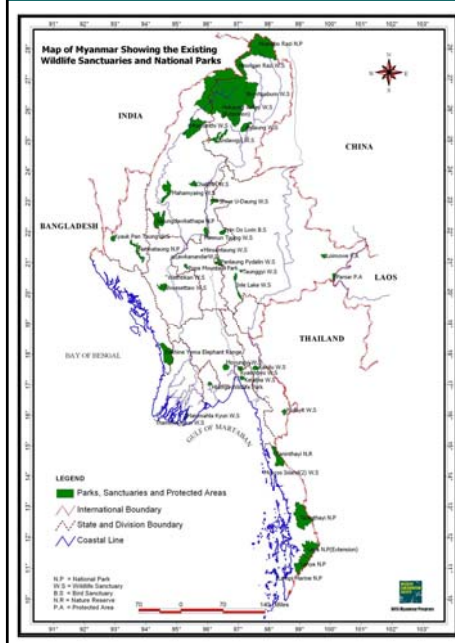
2005 Dec 28 dated Notification No. 11/2005.  
 ( Dept. of Fisheries)  
 Between Kyaukmyaung and Mingun segment of the Ayeyawady River (72 km)



## Remote Sensing and GIS for Wildlife Conservation in Myanmar



## GIS database for Protected areas of Myanmar (boundary digitized on 1 inch = 2 mile topo map)



Total 41 Protected Areas in Myanmar

Attribute data of each parks are:

- Name of park
- Management level
- Year of park establishment
- Area in sq miles/ km/ hectare/ acres
- General location of park
- Notification number
- Notification date
- Land cover % of Myanmar
- Latitude range
- Longitude range
- Bio-units fall on each PAs
- Department of Management
- Key species of each PAs
- Year of park evaluation conducted
- Conservation value

## Scenes of Northern Myanmar



## Scenes of Northern Myanmar



Myanmar-India boundary pillar no.47



THE END

