



---

Working Paper no. 287

# Assessing central counterparty margin coverage on futures contracts using GARCH models

Raymond Knott and Marco Polenghi

January 2006

Bank of England

# Assessing central counterparty margin coverage on futures contracts using GARCH models

*Raymond Knott*<sup>\*</sup>  
*and*  
*Marco Polenghi*<sup>\*\*</sup>

Working Paper no. 287

<sup>\*</sup> Risk Management Division, Markets, Bank of England, Threadneedle Street, London, EC2R 8AH. Email: [raymond.knott@bankofengland.co.uk](mailto:raymond.knott@bankofengland.co.uk)

<sup>\*\*</sup> Risk Architecture Group, Citigroup, London. Email: [marco.polenghi@citigroup.com](mailto:marco.polenghi@citigroup.com)

This paper was completed whilst Marco Polenghi was working in the Market Infrastructure Division of the Bank of England. The views expressed are those of the authors, and not those of the Bank of England or Citigroup. Neither institution is responsible for any statement or conclusion herein, and no opinions, theories, or techniques presented necessarily reflect their respective positions. We would like to thank Andrew Haldane, Stephen Millard, Andrew White and two anonymous referees for helpful comments on an earlier draft. Any remaining errors or omissions are, of course, our own. The paper was finalised on 8 December 2005.

The Bank of England's working paper series is externally refereed.

Information on the Bank's working paper series can be found at  
[www.bankofengland.co.uk/publications/workingpapers/index.htm](http://www.bankofengland.co.uk/publications/workingpapers/index.htm).

Publications Group, Bank of England, Threadneedle Street, London, EC2R 8AH; telephone +44 (0)20 7601 4030, fax +44 (0)20 7601 3298, email [mapublications@bankofengland.co.uk](mailto:mapublications@bankofengland.co.uk).

## Contents

Abstract	3
Summary	4
1 Introduction	6
1.1 Margining and CCP risk management	6
1.2 Previous studies of CCP margin coverage	7
1.3 Conditional versus unconditional estimates of margin coverage	8
1.4 Conditional expected losses as a complementary measure of CCP exposure	9
2 Method	10
2.1 Modelling the returns process	10
2.2 Computing conditional expected losses	12
2.3 Estimation of the tails under EVT	14
2.4 Backtesting to select the best-performing innovation distribution	15
3 Data and preliminary analysis	16
4 Results	17
4.1 Unconditional analysis	17
4.2 Conditional analysis	18
4.3 Conditional expected losses	19
5 Discussion and conclusions	20
Tables	22
Charts	25
Appendix A: Relevant results from EVT	30
Appendix B: Hill's estimator small-sample properties	32
References	33

## **Abstract**

This study considers how the probability of exceeding central counterparty (CCP) initial margin levels can be estimated, in order to provide a timely and informative measure of risk coverage. Previous studies of CCP margining have largely focused on the unconditional distribution of returns, estimating margin coverage on a long-term average basis. The present study extends previous work by estimating conditional margin coverage using a GARCH (1,1) model, so that variations in coverage can be tracked over a much shorter time frame. The model is applied to estimating non-coverage probabilities for two heavily traded derivatives contracts, the Brent and FTSE 100 futures. To account for the well-documented fat-tailed characteristics of distributions of futures returns, several variants of the GARCH model are estimated. These assume that innovations are distributed according to either normal, Student t, extreme value or historical distributions. Backtesting is used to select the best performing distribution. During the sample period, margins are found to provide a coverage level generally in excess of 99%, over a one-day time horizon. It is noted, however, that the coverage probability implied by the model is likely to fall under more volatile market conditions; under these circumstances central counterparties will reset initial margin more frequently and call for margin intraday.

Key words: EVT, GARCH, margin, futures, central counterparty clearing house.

JEL classification: G28, C53.

## Summary

Financial markets benefit from a sound and stable environment. For this reason, central banks follow developments in the financial markets and their associated infrastructure closely. Central counterparties (CCPs), which help to protect market participants against counterparty default have become an increasingly important part of this infrastructure, as they have expanded into new markets, and undergone both vertical and horizontal consolidation. Many regulators and central banks concerned with systemic stability have, as a result, increased their focus on how CCPs manage their risks. The present paper examines some key aspects of risk control in these institutions.

In order to reduce counterparty credit risk for market participants, exchange-traded and some non exchange traded derivatives contracts are guaranteed against counterparty failure by a CCP. In providing this service, however, CCPs themselves become exposed to the risk of counterparty default. To protect themselves, they have developed a system of collateralisation, or margining, by which members of the CCP are required to place a sum of initial margin in a CCP account when they register positions. The initial margin is designed to provide protection against potential changes in the market value of a member's positions over a time horizon of one or more days.

CCPs typically select the appropriate level of initial margin by inspecting the historical distribution of price movements, focusing particularly on recent price changes. After being set, however, initial margin levels will often remain unchanged for some time. During this period, the coverage they provide can change substantially, varying according to market conditions.

This paper describes a model that can be used to assess the coverage provided by initial margins. Previous studies have largely concentrated on assessing long-run average coverage levels. The present study shows how coverage can be assessed on a day-by-day basis. In order to measure variations in coverage, we use a model of returns which assumes a time-varying volatility (a so-called GARCH process). This is used to model the returns of two heavily traded derivatives contracts, the Brent oil and the FTSE 100 futures contracts. Different variants of the GARCH process are estimated, which assume that the changes in volatility are distributed according to either Student t, extreme value or historical distributions. To select the best-performing variant, a backtesting procedure is applied in which the models' forecasts of returns are compared against actual outcomes. Overall, across all coverage levels, we find that the Student t and historical distribution variants offer the best fit to actual returns.

The modelling approach described allows us to estimate the probability that initial margin will be used up, as that probability changes from day to day. Although we find that the average probability of exhaustion for initial margins is low, we note that the probability can increase in volatile markets. That suggests a need to reset the initial margin more often in such circumstances, as most CCPs do in practice.

Regulators and central banks are also interested in understanding what the impact on the market, or the CCP's post-margin resources, would be of more extreme price moves. In particular, they

would like to know what the additional liquidity demands might be if a margin-exhausting price change were to occur. To illustrate how the model could be applied to this question, we calculate the conditional expected loss for the FTSE 100 and Brent futures contracts, ie the expected loss the CCP would suffer when the initial margin is used up completely. This is then used to generate an estimate of the additional liquidity demands that each market would experience. We find that, if the initial margin for the Brent contract were to be exceeded, it would require a greater percentage increase in margin, compared to the FTSE 100, largely due to the higher tail-thickness of the Brent return distribution. We note that, for the sample window chosen, the additional liquidity demands are relatively modest compared to typical intraday margin calling mechanisms.

## 1 Introduction

### 1.1 *Margining and CCP risk management*

Central counterparties (CCPs) play an important role in mitigating credit risk for market participants. For exchange-traded derivatives transactions, they typically form a core part of the market infrastructure, and in over-the-counter (OTC) markets, they now play an increasingly significant role.

CCPs interpose themselves in transactions, such that the original bilateral contracts between market participants are extinguished and replaced by new contracts with the CCP. As a result, bilateral counterparty risks of variable quality are replaced with a high-quality counterparty risk against the CCP. This has benefits both for individual traders and for markets as a whole. Since CCP members need no longer be concerned about the creditworthiness of their counterparties, they need to hold less capital against the risk of default. As a wider spectrum of counterparties now becomes available for each market participant, markets also become more liquid.

In assuming responsibility for contract performance, however, CCPs themselves become exposed to counterparty risk. Moreover the funnelling of market activity through one institution concentrates this risk and the responsibility for its management in the CCP. Many CCPs clear cash and derivatives markets. If such a CCP were to fail, activities in a wide range of markets might face disruption, with the CCP acting as a possible channel of contagion. For these reasons, central banks and regulators who are concerned with systemic stability require CCPs to maintain high standards of risk management.

To reduce the risk of counterparty default, and ensure that if a default does occur it can be absorbed with the minimum loss, CCPs have evolved a variety of risk management safeguards. Primary protection against counterparty default is provided by initial margin. When traders register positions with the CCP, they are required to place a sum of initial margin with the CCP, to cover the latent market risk of the positions. To prevent margin from becoming gradually eroded by market movements, positions are marked to market on a daily basis, and members are periodically ‘called’ to replenish their accounts.

Should a trader become financially distressed, and be unable to meet margin calls, the CCP has the legal right to use the margin in the CCP account to settle the trader’s outstanding obligations. Margin therefore acts as a performance bond making good the trader’s promise to meet any losses, and provided the initial margin level is set at a sufficiently high level, a default which results in losses for the CCP becomes effectively impossible.<sup>(1)</sup>

---

<sup>(1)</sup> As a further layer of protection, CCPs usually require clearing members to hold a minimum level of capital and satisfy specific credit-quality requirements. The CCP may also have access to additional post-margin, default resources, which may be used if margin proves insufficient to meet losses, and may maintain a mutual guarantee, or default fund to which members make a contribution when joining the CCP. Insurance policies may provide further cover, and some CCPs have the power to assess members for funds if other default resources prove insufficient. Margin however, provides the first layer of protection for most CCPs. Other default resources would only be used as a last resort, when margin is exhausted.

CCPs usually set initial margins at a level that will provide them with coverage against market movements over a time horizon of one or two days. Under normal market conditions, these margin levels are quite adequate. In stressed markets, however, margins can become rapidly eroded, potentially leading to uncovered losses for the CCP. Post-mortem analyses of the 1987 stock market crash have suggested that initial margins immediately prior to the crash period may have been too low to provide some US CCPs with adequate protection (Warshawsky and Dietrich (1989); Bates and Craine (1999); Dewachter and Gielens (1999)). Certainly the immediate post-crash response of some US CCPs was to raise initial margin levels. Several CCPs had also experienced acute liquidity problems, which may have been exacerbated by margin levels which, in hindsight, provided insufficient protection.

## *1.2 Previous studies of CCP margin coverage*

Studies which have attempted to estimate CCP margin coverage have broadly adopted three types of approach, (a) statistical, (b) optimisation, and (c) option-based.

- Statistical approaches usually assume that initial margin should be set at a level that produces a pre-specified and acceptably small probability of exhaustion, over a time horizon that reflects the period of potential exposure for the CCP. The coverage level is set exogenously in these approaches (see Figlewski (1984), or Gay, Hunter and Kolb (1986) for example).
- Optimisation models, by contrast, attempt to minimise the total sum of margin, settlement, default and other costs to which the clearing house and its members are potentially exposed. Unlike the statistical models which pre-specify acceptable coverage levels, an appropriate coverage level emerges endogenously in optimisation approaches (see for example, Fenn and Kupiec (1993)).
- Option-pricing models take a strategic approach, assuming that, at least in theory, clearing members may choose to default if the reduction in value of their positions is greater than their posted margin. Since the CCP does not charge counterparties for this default option, initial margins should be set high enough to ensure that it is valueless (Kupiec (1997)).

The approach taken in the present paper is most closely related to the statistical models. See Knott and Mills (2002) for a more general review of other modelling approaches.

A variety of statistical studies have tried to quantify the market risks faced by CCPs. Figlewski (1984) estimated the degree of coverage provided by typical initial margins on stock and stock index futures, assuming that returns could be modelled as a geometric Brownian motion process. Gay, Hunter and Kolb (1986) constructed a similar model. These studies made the assumption that either returns or price changes were normally distributed. There is compelling evidence, however, that return distributions, particularly in futures markets, are leptokurtic (ie exhibit fatter tails than the normal distribution) indicating a greater probability of extreme price moves (Cornew, Town and Crowson (1984); Cotter and McKillop (2000); Venkateswaran, Brorsen and Hall (1993)). The potential inaccuracy of assuming a normal distribution, when evaluating



margins, is illustrated by a study of Warshawsky and Dietrich (1989) which showed that for margin coverage levels of 99%, normality assumptions consistently underestimated the required margin level.<sup>(2)</sup>

Recent studies of CCP margining have given greater attention to the fat-tailed characteristics of financial return distributions and have applied extreme value theory (EVT) to estimating margin levels for futures contracts (eg Booth, Broussard, Martikainen and Puttonen (1997); Broussard (2001); Cotter (2001); Dewachter and Gielens (1999); and Longin (1999)) concluding that EVT provides a useful tool for informing margining decisions. Generally, however, these studies have concentrated on modelling the unconditional distribution of returns.<sup>(3)</sup>

The present study adds to the existing literature by taking a conditional approach to evaluate the statistical coverage provided by margin, while recognising the well-known stylised facts about futures returns, namely the presence of fat-tails and volatility clustering. This approach offers a way of assessing the margining behaviour of CCPs on a dynamic basis, which will be of interest to central banks and supervisors, as well as CCPs and their users.

### *1.3 Conditional versus unconditional estimates of margin coverage*

In calculating margins, two different return distributions can be considered — the unconditional distribution or the distribution conditioned on current market information. Although the majority of research studies that have applied EVT to estimating margin levels have based their analysis on the unconditional distribution of returns, in practice, CCPs recognise the importance of giving additional weight to recent price history, especially current market volatility. McNeil and Frey (2000) note that conditional and unconditional analyses provide different but complementary information. Unconditional analyses ‘attempt to assign a magnitude to a specified rare adverse event, such as a five or ten-year loss’. Modelling the tail of the unconditional distribution can therefore be likened to stress testing. By contrast, conditional analyses ask what is the possible loss over the next day given current market conditions.<sup>(4)</sup>

One way to incorporate conditionality into margining is to apply a stochastic volatility model. As Danielsson and Morimoto (2000) and McNeil and Frey (2000) note, however, there are difficulties in applying standard stochastic volatility models to modelling the tails of the return distribution. Such models typically assume conditional normality of returns, which is not usually

---

<sup>(2)</sup> In setting margins for individual futures positions, CCPs typically make an estimate of the appropriate margin level by inspecting the historical distribution of price movements over recent months, and select the quantile that provides the desired level of coverage. CCPs will often use a two-day horizon, anticipating that a default event will usually mean that margin has already not been paid on that day. But this method may not always provide an adequate estimate of the margin required to protect against unusually large price movements, particularly if the sample window is small. CCPs will therefore adjust their empirical quantile estimates with subjective judgements on whether previously observed extreme moves (from outside the sample window) are likely to be repeated, and on whether anticipated future events (eg interest rate decisions) are likely to have an unusually large impact.

<sup>(3)</sup> Fenn and Kupiec (1993) is a notable exception; it employs a conditional approach and derives implied non-coverage probabilities for historical margin levels.

<sup>(4)</sup> Although margins set to ‘cover once every ten-year’ events would probably provide a comfortable level of coverage for CCPs, they would almost certainly be rejected by members who have to bear the opportunity cost of posting margin. Such events might, however, be considered appropriate for stressing post-margin backing.

well supported by the data. Whereas the central portion of the return distribution can be satisfactorily modelled assuming conditional normality, the tails generally cannot. Danielsson and Morimoto (2000) explain this by observing that a standard AR-GARCH process with normally distributed innovations gives the same weight to observations in the centre and in the tails of the distribution, so that the common events (which represent the middle 95% of the distribution) drive the estimation. To counter this problem, innovations can be modelled using a fat-tailed distribution such as a Student t, or one of the family of extreme value theory distributions.<sup>(5)</sup>

In the present study, four different alternatives for the distribution of innovations are considered: (1) historical, (2) normal, (3) Student t, and (4) extreme-value. To establish the best fit, a backtesting approach is applied, similar to that described in McNeil and Frey (2000).

#### *1.4 Conditional expected losses as a complementary measure of CCP exposure*

In addition to setting margins at an appropriate level, CCPs also need to make an estimate of the resources they need to hold in reserve to meet a potential default. Typically this is done by stress testing. Most stress tests, however, suffer from a problem of subjectivity, as it is usually hard to associate a given scenario with a probability of occurrence. An alternative way to estimate the resources potentially required is to calculate the conditional expected losses on a contract – ie the expected loss to the CCP conditional on the initial margin level being exceeded – a risk measure also known as the tail loss.

In the same way that conditional margin levels change on a day-by-day basis, conditional expected losses will also vary. Bates and Craine (1999) offered a graphic illustration of this by examining conditional expected losses on Chicago Mercantile Exchange (CME) contracts before and during the Crash of 1987. They found that, post-Crash increases in margin reduced the probability of a margin exceedance back to pre-Crash levels, but the expected losses faced if a margin-exhausting price move were to have occurred were still an order of magnitude higher. This result highlights the importance of calculating other measures of clearing-house exposure, and suggests that, when considered alone, margin coverage probabilities may in fact provide a misleading picture of CCP exposure.

To summarise, estimates of conditional expected losses can provide an informative supplement to margin exceedance probabilities by providing a forward-looking measure of the economic impact

---

<sup>(5)</sup> A conditional approach to incorporating EVT also provides an additional benefit. The main asymptotic results of EVT require that sample observations be independent and identically distributed (iid). Typically, however, futures returns show volatility clustering. While this is often ignored in EVT studies of margin, it can potentially lead to inaccurate tail estimates. In order to remove volatility clustering and produce an iid series suitable for EVT analysis, Kiesel, Perraudin and Taylor (2001) recommend filtering data using an AR-GARCH process and then fitting the residuals with the EVT distribution. Fitting a stochastic volatility model to the data prior to applying EVT therefore provides the additional benefit of filtering or pre-whitening the data. Despite these benefits, a reviewer of this article notes that the pre-whitening approach is not universally accepted. Some authors, for example, have expressed concern that it can introduce spurious structure into the residuals (see for example, Danielsson and Morimoto (2000)).

of a margin-exhausting price move.<sup>(6)</sup> As such, they can be used to estimate the liquid capital resources that CCP members' might need to meet losses on their positions, or what the CCP itself might require as back-up resources to meet a potential default.

The main goal of this study is to measure the risk coverage provided by margins set on futures contracts. To provide a way of assessing day-by-day changes in risk coverage, we employ a GARCH (1,1) model. To incorporate the well-documented fat-tailed characteristics of futures return distributions, conditional Student t and extreme value theory distributions are integrated into the modelling framework. Variants of the basic model are assessed which assume that residuals from the GARCH model are distributed according to conditional normal, historical, Student t or extreme value distributions, respectively, and backtesting is used to select the best-performing model, following a method described by McNeil and Frey (2000). The model is applied to calculating conditional margins for the Brent and FTSE 100 futures that provide a pre-specified level of statistical coverage similar to that used in practice by CCPs.

The application of the model is illustrated by calculating the conditional exceedance probabilities for initial margins set historically by the London Clearing House (LCH, now LCH.Clearnet), ie the implied probability that, on any given day, the margin level set by LCH would have been exceeded by market movements. As an additional measure of CCP exposure, market liquidity requirements are also estimated with the model, assuming a scenario where these historic margin levels were, in fact, exhausted.

## 2 Method

This section summarises the econometric approach. A model which is designed to capture the volatility structure of futures returns is first described. Quantiles of the return distribution are estimated from this model, and hence margin levels that provide a pre-specified level of coverage. One of a number of contrasting distributional assumptions can be selected when formulating the model. The implications of these different distributional assumptions are compared, and the model is selected which provides the best fit to the empirical return distribution, using the backtesting method outlined by McNeil and Frey (2000). Finally, the model is applied to estimating conditional expected losses for individual futures contracts, and hence to calculating the aggregate market liquidity required to meet a margin-exhausting price move.

### 2.1 Modelling the returns process

When modelling futures price returns, two main empirical regularities need to be accounted for: the presence of fat-tails, and volatility clustering. To incorporate these features, we adopt the following model in which futures returns can be described by a strictly stationary process  $\{X_t\}_{t \geq 0}$  with the following dynamic structure:

---

<sup>(6)</sup> Compared to simple quantile measures, conditional expected losses (CEL) also show a number of desirable theoretical properties, in particular sub-additivity ie  $CEL(A + B) \leq CEL(A) + CEL(B)$  (see Artzner, Delbaen and Heath (1997)).

$$\begin{aligned}
X_t &= a + bX_{t-1} + \sigma_t Z_t \\
\sigma_t^2 &= \alpha + \beta\sigma_{t-1}^2 + \gamma\varepsilon_{t-1}^2 \\
\varepsilon_t &= \sigma_t Z_t, \quad Z_t \sim IID(0,1), \quad P(Z \leq z) = F_Z(z)
\end{aligned} \tag{1}$$

The innovations  $\{Z_t\}_{t \geq 0}$  are assumed to have zero mean, unit variance and to be independently and identically distributed (ie IID(0,1)) according to a distribution function  $F_Z(z)$ .

With this structure, returns have a simple AR(1) recursive dependency, and volatility follows a GARCH (1,1) process such that the volatility at time  $t$  is dependent on shocks and volatility at time  $t-1$ . This model provides a simple and parsimonious way to take into account volatility clustering.<sup>(7)</sup>

From (1), the time  $t$  quantile,  $x_q$ , can be derived for a given probability level  $q \in (0,1)$  and conditional on the information set available at time  $t-1$ . First, the quantile,  $x_q$ , is defined such that

$$q = P_{t-1}(X_t \leq x_q)$$

Using (1) this can be rewritten as,

$$\begin{aligned}
q &= P_{t-1}(a + bX_{t-1} + \sigma_t Z_t \leq x_q) \\
&= P_{t-1}\left(Z_t \leq \frac{x_q - a - bX_{t-1}}{\sigma_t}\right) = F_Z\left(\frac{x_q - a - bX_{t-1}}{\sigma_t}\right)
\end{aligned} \tag{2}$$

If the quantile associated with the distribution function  $F_Z(z)$  is denoted as  $z_q$ , the quantile  $x_q$  can be rewritten as,

$$x_q = a + bX_{t-1} + \sigma_t z_q \tag{3}$$

Equation (3) says that given the information set available at time  $t-1$ , the quantile  $x_q$  for the returns is a linear function of the innovation quantile and is proportional to the volatility level, implying that the quantile  $x_q$ , and the margin estimates derived from it, will inherit fluctuations in the estimate of  $\sigma_t$ .<sup>(8)</sup>

This model can be used to derive the next-day conditional distribution and the non-coverage (or tail) probability implied by a pre-specified margin level. The probability that  $X_t$  will be less than a pre-specified level  $x^{mar}$  is equal to

<sup>(7)</sup> A more complicated volatility structure could be assumed, but it is not clear this would significantly improve the model's forecasting ability. Hansen and Lunde (2001), for example, estimate more than 300 volatility models concluding that there is no model that provides a clearly superior forecast to the GARCH(1,1) framework. Recent studies by Barone-Adesi, Giannopoulos and Vosper (2002), Kiesel, Perraudin and Taylor (2000) and McNeil and Frey (2000) adopt a similar model.

<sup>(8)</sup> See Danielsson and Morimoto (2000).

$$\begin{aligned}
P_{t-1}(X_t \leq x^{mar}) &= P_{t-1}(a + bX_{t-1} + \sigma_t Z_t \leq x^{mar}) \\
&= P\left(Z_t \leq \frac{x^{mar} - a - bX_{t-1}}{\sigma_t}\right) = F_Z\left(\frac{x^{mar} - a - bX_{t-1}}{\sigma_t}\right)
\end{aligned} \tag{4}$$

$x^{mar}$  can be taken as the maximum return permitted by initial margin. With this interpretation, (4) gives the coverage level, on a specific date, provided by margin,  $x^{mar}$ .<sup>(9)</sup>

To compute actual exceedence probabilities, a functional form must be provided for  $F_Z(z)$ . GARCH models typically assume the distribution of innovations to be normal. McNeil and Frey (2000), however, note that when modelling a fat-tailed return distribution it may be appropriate to choose a different innovation distribution. Here, four different alternatives are considered: (i) historical, (ii) normal, (iii) Student t and (iv) extreme value distributions. The historical distribution is derived from the standardised residuals of an AR(1)-GARCH(1,1) process with a normal distribution.

When the innovations are normally distributed, the quantile is defined by solving  $q = F_N(x_q)$  where  $q$  is the amount of probability in the left tail,  $F_N$  is the Gaussian distribution function and  $x_q$  is the desired quantile. In the case of the historical distribution, the quantile is determined by selecting the observation that leaves to its left (ie in the tail) the required percentage of observations.

For the Student t case, suppose  $T$  is a Student t distributed random variable with  $\nu$  degrees of freedom, then  $E[T] = 0$  and  $V[T] = \nu/(\nu-2)$ ,  $\nu > 2$ . Standard assumptions require that innovations have unit variance, so the process for  $Z$  in (1) is scaled as  $Z = \sqrt{(\nu-2)/\nu} * T$ . The quantile,  $z_q$ , can then be expressed in terms of the quantile of the Student t random variable as  $z_q = \sqrt{(\nu-2)/\nu} * F_T^{-1}(q)$  where  $F_T^{-1}(q)$  is the  $q$ -quantile of  $T$ .

Finally, innovations can be assumed to follow an extreme value theory (EVT) distribution. The reader is referred to Appendix A for technical details on EVT. Here we simply note that if the distribution function can be assumed to be in the domain of attraction of a Frechet distribution,  $F \in MDA(\Phi_\alpha)$ , then the desired quantile can be estimated by  $x_q = (n/k(1-q))^{-1/\alpha} X_{n-k:n}$ , where  $\alpha$  is the tail parameter and  $X_{n-k:n}$  is the  $k^{th}$  order statistic.

## 2.2 Computing conditional expected losses

In addition to non-coverage probabilities, measures of conditional expected loss, ie the expected losses conditional on margin being exceeded, can provide important information on CCP exposure. Using the model described in the previous section, it is possible to derive the conditional expected return,  $CER_t$ , defined as the expected value of the return,  $X_t$ , given that it has exceeded a certain level  $u$ .

$$CER_t \equiv E_{t-1}[X_t | X_t > u]$$

---

<sup>(9)</sup> Note that these expressions are valid only one-step ahead.

Substituting for  $X_t$  from (1) gives,

$$CER_t \equiv a + bX_{t-1} + \sigma_t E[Z | Z > z] \quad (5)$$

where  $z = (u-a-bX_{t-1})/\sigma_t$  and  $E[Z|Z>z]$  depend on the chosen distribution for the innovations and can be summarised in the following way,

$$E[Z | Z > z] = \begin{cases} \frac{\phi(z_q)}{1 - \Phi(z_q)} \approx z_q (1 + z_q^{-2}), & Z \sim N(0,1), \\ z_q \left[ \frac{\nu}{\nu - 1} (1 + o(\nu^{-1})) \right], & z_q = \sqrt{\frac{\nu - 2}{\nu}} t_q, \quad t_q = F_T^{-1}(q), \\ \frac{1}{1 - \xi} z_q, & EVT \end{cases}$$

$\phi$  and  $\Phi$  are, respectively, the density and the distribution for a standardised normal random variable.

Equation (5) gives the *expected return* given that a certain threshold level return has been exceeded. A more conventional measure of conditional *expected loss* can be derived from this. Suppose a conditional distribution is obtained for date  $t+1$ . Knowing the maximum return permitted by initial margin at date  $t+1$ ,  $r_{t+1}^{mar}$ , the expected price variation, given that this margin level has been exceeded, can be computed. Given the futures closing price  $P_t$  at time  $t$ , the additional expected financial resources required per unit of contract, conditional on margin being exceeded is  $|\exp(CER_{t+1}) - \exp(r_{t+1}^{mar})|P_t$ . Multiplying this expression by the contract size and the open interest figure then provides an estimate of the total liquidity that would be required in the market, in the event that initial margin is exceeded.

### 2.3 Estimation of the tails under EVT

Estimation of the AR(1)-GARCH(1,1) model shown in **(1)** is relatively straightforward for both normal, student t and historical innovations. The estimation for EVT distributed innovations is more complex, but essentially involves two steps: (i) estimate the model with normal innovations, and (ii) apply EVT to the standardised residuals. It can be shown (see Gouriéroux (1997)) that step (i) yields asymptotically consistent estimates of the model parameters. The intuition is that the AR and the GARCH parts of the model fit the central part of the distribution (ie the conditional mean and variance) leaving the tails unaffected. The tails can then be estimated in step (ii) using a non-parametric estimation technique. In the present paper, a version of the Hill estimator (Hill (1975)), which is suitable for small samples, is applied. We describe this below.

If the innovation distribution can be assumed to be fat-tailed, EVT tells us that the distribution of the sample maxima can be modelled as a Fréchet distribution. More specifically, the (unknown) distribution function,  $F$ , belongs to the domain of attraction of the Fréchet distribution,  $F \in MDA(\Phi_\alpha)$ . If this is the case, the complementary distribution function  $\bar{F}(x) \equiv 1 - F(x)$  can be approximated as  $\bar{F}(x) = Cx^{-\alpha}$ , where  $C = u^\alpha$ ,  $x \geq u > 0$ . The maximum likelihood estimator for  $\alpha$  can be shown to be,

$$\hat{\alpha} = \left( \frac{1}{n} \sum_{j=1}^n \log X_{n-j+1:n} - \log u \right)^{-1}$$

where  $X_{n-j+1:n}$  is the  $(j+1)^{\text{th}}$  upper order statistic.<sup>(10)</sup> In the general case, the threshold  $u$  is unknown, but can be approximated by the  $k^{\text{th}}$  order statistics. Then, conditional on the number  $k$  of exceedances of the threshold, the maximum likelihood estimator (MLE) becomes

$$\hat{\alpha}^{(H)} = \hat{\alpha}_{k,n}^{(H)} = \left( \frac{1}{n} \sum_{j=1}^n \log X_{n-j+1:n} - \log X_{n-k:n} \right)^{-1} \quad (6)$$

The MLE for the constant,  $C$ , is  $\hat{C}_{k,n} = X_{n-k:n}^{\hat{\alpha}_{k,n}} \frac{k}{n}$

Equation **(6)** is called the Hill estimator (see Hill (1975)). The quality of the estimate depends upon the choice of  $k^{\text{th}}$  order statistics.

Several recent papers have discussed how to select an optimal value for  $k$ . Drees and Kaufmann (1998) find  $k(n)$  using an iterative procedure. Beirlant, Vynckier and Teugels (1996) use a regression approach based on a Pareto quantile plot. Danielsson, de Haan, Peng and de Vries (2001) use a two-step subsample bootstrap method. A drawback of these methods is the very large sample size required which makes them unsuitable for many applications.

A somewhat simpler alternative, appropriate for small samples, has been recently suggested by Huisman, Koedijk, Kool and Palm (2001). A weighted average of a set of Hill estimators is calculated, with weights obtained by using simple least square methods. Huisman *et al* (2001)

---

<sup>(10)</sup> See Appendix B for a definition of upper order statistics.

show that this approach produces unbiased estimates for the tail-index in small samples.<sup>(11)</sup> We adopt this approach for three reasons, (i) it removes the need to choose the optimal threshold, (ii) it yields acceptable estimates even for small samples (ca. 250), and (iii) it provides a clear criterion for selecting the best Hill estimate.<sup>(12)</sup>

#### 2.4 Backtesting to select the best-performing innovation distribution

The previous section, described how to estimate the AR(1)-GARCH(1,1) model under different distributional assumptions, but left unresolved the question of which distribution should be selected as the best model. To choose among the four possible alternatives, a backtesting procedure was applied, in which the model was estimated for a large number of subsamples, so the predictive ability of each alternative distribution could be assessed, and the best-performing distribution selected. This procedure is described in more detail below.

Suppose the sample size is equal to  $N$  and a subsample size is fixed equal to  $n < N$ . The model is estimated using the first  $n$  observations. Parameter estimates are then used to compute the next-day quantile  $x_{n+1|n}^q$  at a confidence level  $1 - q$  which can be compared with the actual observed return for day  $n+1$ ,  $x_{n+1}$ . If  $|x_{n+1}| > |x_{n+1|n}^q|$ , an exceedance is said to have occurred. The sample window is then shifted forward by one observation, and the model is re-estimated using the subsample from  $t=2$  to  $t=n+1$ . In parallel fashion, the predicted quantile  $x_{n+2|n+1}^q$  for date  $n+2$  is compared with the actual realisation  $x_{n+2}$  and it is noted whether or not an exceedance has occurred. The process continues in this way until all the subsamples are exhausted.

If the non-coverage probability has been fixed at  $q$ ,  $qN$  exceedances would be expected on average. For a specific distribution, if there are fewer exceedances than the expected number, the predicted quantiles  $x_{n+1|n}^q$  of the distribution may be too large. If there are more exceedances than expected, the quantiles may be too small. The distribution is selected that gives a number of exceedances closest to the expected number.

To implement the backtesting procedure, a subsample size of 500 observations was employed (ie  $n = 500$ ). This is sufficiently small to be comparable to the data windows often used by CCPs for margining, yet sufficiently large to permit empirical quantiles to be derived for very small probabilities (up to 0.2%) and the small-sample EVT estimation techniques (described in Appendix B) to be applied.

The model can also be applied to estimating the coverage provided by historical initial margin levels. If the initial margin for date  $n+1$  is known, equation (4) can be used to estimate coverage

<sup>(11)</sup> See Appendix B for details.

<sup>(12)</sup> An alternative approach for estimating the tails of an EVT distribution is the so-called peaks over threshold method (POT), which assumes that the tail of the distribution can be approximated by a generalised Pareto distribution (GPD). To apply the model it is necessary to fix a threshold above which it is assumed that the GPD provides a good approximation to the data generation process. McNeil and Frey (2000) and Kiesel *et al* (2001) both regard the GPD approach as a superior method for estimating tails. In the backtesting exercise, however, this would require us to fix the number of order statistics to be the same in each subsample. This would not always produce an optimal fit.



probabilities. To illustrate the approach, implied coverage probabilities for initial margins set historically by LCH on the Brent and FTSE 100 contracts are reported in Section 5.

### 3 Data and preliminary analysis

The data set consists of daily closing prices for the Brent and FTSE 100 futures contracts. Both are high volume contracts of considerable importance to the exchanges on which they are traded (the London International Financial Futures and Options Exchange, and the International Petroleum Exchange, respectively). Closing prices were used because the obligations of the CCP are based on close of day positions.

#### *(i) Time series of futures prices*

To create a time series of futures prices sufficiently long for analysis, individual contracts must be rolled over as they approach maturity. In order to link individual contract prices, two choices must be made: (1) *when* to switch from one contract to the next (ie how to choose the *rollover date*) and (2) *how* to correct for any discrete change in price (ie any *price adjustment* on the rollover date). A variety of approaches have been taken in the research literature. Longin (1999) uses futures prices but does not amend the time series on the rollover dates. Cornew, Town and Crowson (1984) roll over futures contracts by selecting a date two weeks before the first notice day. Cotter and McKillop (2000) change contracts on the last trading day before the delivery month making no correction, but recognising the possibility of artificial jumps.

In order to prevent artificial jumps from arising, the following procedure was adopted here. The front contract was rolled to the next on the first day of the delivery month. Both contracts are liquid at this point and by switching on the first day, a spot-month charge levied by the CCP at the start of the delivery month can be ignored. Nevertheless, switching contracts on the first day of the delivery month can introduce an artificial jump into the time series of futures prices because of differences in the individual contract prices. Since these jumps are artefacts of the method used to construct the time series, which are not economically relevant, the rollover dates, and so any jumps associated with them, have been omitted. Table A presents descriptive statistics for returns on the two contracts, which are discussed further in (iii).

#### *(ii) Times series of initial margins*

Two time series of initial margins for the Brent and FTSE 100 futures contracts were obtained from LCH covering the periods 4/1/99 to 11/2/02 and 6/1/98 to 11/2/02, respectively.<sup>(13)</sup> Initial margins for long and short positions are set equally. Charts 1 and 2 show that initial margins

---

<sup>(13)</sup> Like many other CCPs, LCH uses the SPAN system (Standard Portfolio Analysis of Risk) to calculate initial margins for portfolios of futures and other exchange-traded derivatives contracts, and some OTC contracts. Initial margin for a single unhedged futures contract is represented by a SPAN parameter known as the *scanning range* which is periodically updated by CCPs as market conditions change. Although a single contract usually consists of a fixed number of units of the underlying commodity, for simplicity, the analysis here considers the margin required for each individual unit. For example, each Brent futures contract is for 1,000 barrels. The margin per lot set on 30/9/02 was \$2,000, equivalent to \$2 per barrel.

remained constant for significant portions of each period. The temporary increases visible for the Brent contract usually coincide with UK public holidays where protection would be required over a longer time horizon than normal. For example, a temporary increase in initial margin occurs at the end of 1999, to provide additional protection during the Millennium period.

The charts also show close-to-close prices superimposed on initial margin levels. A visual comparison shows that during the sample period there were no initial margin exceedances for the FTSE 100 contract, compared with nine for the Brent contract (see Table B).

### *(iii) Descriptive statistics*

From the time series of closing prices, log returns for each contract were computed. Descriptive statistics (Table A) show that for both contracts the return distributions were approximately symmetric. Jarque-Bera and the Kolmogorov-Smirnov tests, however, indicate deviations from normality. QQ plots, illustrated in Chart 3B and Chart 4B, confirm fat-tailed behaviour. Return plots (Chart 3A and Chart 4A) suggest the presence of heteroscedasticity (ie time-varying volatility), which is confirmed by the autocorrelation function for the squared returns (Chart 3D and 4D). Finally, there is little evidence of correlation in the return levels (Charts 3C and 4C), and the standard augmented Dickey-Fuller and the Phillips-Perron tests indicate that both series are stationary.

Overall, the descriptive analysis indicates heteroscedasticity and leptokurtosis (ie fat-tails) to be the two main empirical regularities which need to be taken into account.

## **4 Results**

### *4.1 Unconditional analysis*

Charts 5A-D show unconditional margins at a succession of coverage levels, for each of the four distributions. Inspection shows that there is generally a fairly consistent rank ordering of margin levels with  $EVT > Historical > Student\ t > Normal$ . EVT margins are clearly greater than margins calculated under other distributional assumptions at all coverage levels, with this pattern being most marked for the Brent contract, and particularly for its left tail which represents large price falls. The large EVT margins can be explained by the fact that, unlike the other distributional approaches, the EVT analysis only considers extremes (ie observations actually in the tail). These margins therefore tend to be more sensitive to large tail observations. Even at the lowest coverage level of 95%, the EVT analysis still leads to the highest margins, a finding which differs from some previous studies, which have only observed reliable differences between EVT and the historical distribution at coverage levels greater than 99%. In the present data set, it is differences between margins based on the normal, historical and Student t distributions, which only begin to emerge at the 99% level.

The most significant feature of Charts 5A-D is the distribution by coverage level interaction. As higher coverage levels are approached, there is a proportionate increase in the EVT margins

compared with other distributions. Compared with the normal distribution margins, the historical distribution and Student t margins show a similar but less marked interaction.

To assess the coverage that would have been provided by these theoretically derived margins they can be compared against historical daily price movements. Table C reports the number of margin exceedances observed. For the Brent contract, there are a total of 3,034 observations. At a coverage level of 99%, 30 violations would therefore be expected. The historical margins are set in order to produce this expected number. Results from the three other distributions are compared in Table C. The Student t distribution produces a number of exceedances closest to the expected number. The third and fourth columns of the table show that the dollar margin derived from the Student t distribution is almost identical to the historical distribution.

#### *4.2 Conditional analysis*

Charts 6A and 6B depict conditional margins derived from the four distributions as a function of time. Margins are calculated for the right tail of the returns distribution assuming a required coverage level of 99.5% (99%, two-tailed). The main features to note are that for both the Brent and the FTSE 100 contracts, the conditional margins show considerable variability over time, largely because the model is driven by market volatility. For the Brent contract, there is nevertheless a fairly consistent rank ordering of the margin levels which mirrors the results of the unconditional analysis ie  $EVT > \text{historical} > \text{Student } t > \text{normal}$ . This ordering breaks down, however, after October 2000.

For the FTSE 100 contract, there is no consistent rank ordering of conditional margins, and in general the margins calculated on the basis of the four distributions are similar. The absence of a rank ordering seems most likely attributable to the fact that, compared with the Brent contract, the FTSE 100 contract is less fat-tailed, as indicated by the QQ-plot in Chart 4B. The FTSE 100 distribution shows fewer extreme values, and as a result, the impact of the choice of innovation distribution is less marked.

Charts 7A and 7B show the Student t and normal distribution models applied to calculating non-coverage probabilities for the initial margin levels set historically by LCH. The model suggests that the initial margins on the FTSE contract provided an average coverage level of 99.86% during the sample period. The average coverage level for the Brent contract is similar at 98.96%. These levels are consistent with overall number of exceedances of initial margin for each contract reported in Table B. Despite the high average levels, both charts show that coverage can fall when more volatile market conditions are encountered.

##### *4.2.1 Backtesting results*

Tables D and E display the number of margin exceedances observed in backtesting for the four conditional distributions at four different non-coverage levels. The expected number of exceedances at each non-coverage level is shown in the bottom line of each table.

Consider the Brent contract first (Table D). In seven out of eight cases, margins based on the thin-tailed normal distribution lead to too many margin exceedances. The one exception occurs, as might be expected, at the highest non-coverage level of 5%, where the error introduced by assuming a normal distribution is least. At the other extreme, EVT margins are observed to be much too conservative at the 5% level, leading to far too few exceptions. At the higher coverage levels, however, performance of the EVT distribution improves significantly. Overall, and taking into account performance at all coverage levels, the historical and Student t distributions provide the best fit.

FTSE 100 backtest results offer a broadly similar picture. At the 5% non-coverage level, the EVT margins are too stringent, though performance improves substantially at higher coverage levels. For this contract, the normal distribution leads to margins that are too low in five out of eight cases, but the margin levels are generally closer to those predicted by other distributions. This result might be expected given that the FTSE 100 distribution is less fat-tailed than the Brent distribution (compare Charts 3B and 4B).

### 4.3 Conditional expected losses

This section reports conditional expected losses for the Brent and FTSE 100 contracts, in order to assess the potential liquidity demands on market participants of margins becoming exhausted.

Section 2.2 introduced the notion of conditional expected return, ie the expected return given that the maximum (or minimum) return permitted by margin has been exceeded. Using conditional expected returns, a measure of the extra liquidity required to meet outstanding obligations can be derived. The procedure is as follows. Using the returns up to date  $t$ , the conditional distribution of returns for date  $t+1$  is estimated. Given the maximum return permitted by margin for date  $t+1$ ,  $r_{t+1}^{mar}$ , the conditional expected return,  $CER_{t+1}$ , is calculated. If  $P_t$  is the closing price at date  $t$ , then  $|exp(CER_{t+1}) - exp(r_{t+1}^{mar})|P_t$  represents the conditional expected loss, or equivalently, the extra liquidity needed to cover the margin exceedance.

As an illustration, Tables F and G estimate the expected extra liquidity required to meet a margin exceedance, based on the sample window. The Student t model was used to estimate the conditional distribution of returns, and prices were averaged across the sample. To calculate a figure for required market liquidity the contract size was multiplied by the average open interest.

Table F shows that, for the Brent contract, an extra \$80-\$90 million would be required on average, and the maximum additional liquidity demand, based on the sample period, would be \$177 million. For the FTSE 100 contract, overall liquidity requirements are more variable. The maximum extra liquidity is £361 million, and the average around £80 million.

To put these figures into perspective, Table G recasts them as a percentage of the margin already posted. A 7% minimum additional margin would have been required to meet a margin exceedance on the Brent contract, compared with only 1% for the FTSE 100 contract. On average the Brent contract would have required 8%-9% additional margin, compared to 2%-3% for the FTSE 100. Thus, although a margin exceedance on the FTSE 100 contract would have required,

under some circumstances, more additional margin, in dollar terms, than the Brent contract, a margin exceedance on the latter would generally have required a higher percentage increase in margin. This can be largely attributed to the fatter tails of the Brent return distribution. It is worth noting that these illustrative liquidity requirements are relatively modest compared to the stress-testing moves which would be used for determining post-margin backing for a CCP, or indeed compared to typical intraday calling mechanisms, where calls are based on a half, or a whole, margin deposit.

## 5 Discussion and conclusions

This study has described a method for assessing the conditional coverage provided by CCP initial margins, illustrating its application to two heavily traded futures, the Brent and FTSE 100 contracts. Previous work on margining has largely focused on assessing margin coverage unconditionally. This study suggests that estimating the conditional distribution of returns using a GARCH model can potentially provide more timely, price-sensitive information on the risk coverage offered by CCP margins.

We have extended previous work on margining by constructing a model of margin coverage that integrates fat-tailed characteristics and conditional volatility within the same framework. By exploiting the additional information present in the structure of returns, this model permits the calculation of estimates of the probability of margin exceedance, on a day-by-day basis.

The model was applied to estimating the coverage provided by initial margins set by LCH on the Brent and FTSE 100 contracts. During the sample period, margins were found to provide a coverage level generally in excess of 99%, over a one-day time horizon. Long-run coverage levels were also independently assessed using the observed frequency of initial margin exceedances, with the two analyses producing similar results. It was noted, however, that the coverage probability implied by the model could fall in more volatile markets, underlining the need for CCPs to carefully monitor margin levels and adjust them as necessary to take account of changing market conditions, as they do in practice.

Backtesting indicated that an AR(1)-GARCH(1,1) process provided a simple but effective model for the conditional mean and volatility of futures returns. Danielsson and Morimoto (2000) have previously argued that pre-whitening the data using this approach removes only volatility clustering and not extreme dependence, ie there is no guarantee that GARCH filtering will remove all the structure in the data. Our backtesting results, however, suggest that, at least in this instance, an AR(1)-GARCH(1,1) model with innovations based on the historical or  $t$  distributions produced a reasonably good fit to the tails of the return distribution. This is a potential avenue for future research.

The choice of innovation distribution did make a marked difference to the quality of the fit. Normally distributed innovations generally led to margin levels that were too low to provide the required level of coverage. At high confidence levels (greater than 99%), it might have been expected that the extreme value distribution, which explicitly models only the extremes, would provide the best fit. Even for the fat-tailed Brent return distribution, however, the EVT fit was not

significantly better than one based on the t distribution, and across all coverage levels (including 95%), the historical and t distributions produced superior performance.<sup>(14)</sup>

One reason why the EVT approach may have failed to outperform other models is that when the tail parameter  $\alpha$  on the residuals of each filtered subsample is estimated, it is implicitly assumed that the true distribution of the innovation belongs to the domain of attraction of the Fréchet distribution. Although the tail parameter  $\alpha$  changes for each subsample, it remains a fat-tailed distribution. When estimating the AR(1)-GARCH(1,1) model with Student t distributed innovations, however, it was observed that the degrees of freedom changed frequently, reaching values greater than 20, indicating that the tails of the sample distribution were not always fat-tailed. In contrast to the EVT approach, the historical and Student t models have the flexibility to accommodate these variations in tail-thickness.

Overall, it can be concluded that: (1) a thin-tailed distribution, such as the normal, does not provide an adequate fit to the innovation distribution. (2) In a conditional context, a fat-tailed EVT distribution performs better than the normal distribution but does not necessarily outperform other simpler models, (3) for the coverage levels considered here, the historical and Student t distributions generally provide satisfactory estimates of the appropriate margin. If very high coverage levels are sought, however, or estimates of conditional expected losses, it is probably preferable to use an EVT or a Student t distribution. (4) When all non-coverage levels are considered, the Student t distributions probably provide the most flexible all-round model.

The modelling approach described has allowed us to estimate the probability that initial margin will be exhausted, as that probability changes dynamically day to day. Although we have found that average probability of exhaustion for actual initial margins is reassuringly low, we note that the probability can increase in volatile markets, again underlining why CCPs carefully monitor margin levels and adjust them as necessary to take account of changing market conditions.

Regulators and central banks are also interested in understanding what the impact on the market, or indeed the CCP, would be of more extreme price moves. In particular, they would like to gauge the additional liquidity demands on the market, if a margin-exhausting price move were to occur. Our analysis indicated that the tail shape of the return distribution is an important determinant of this extra liquidity requirement. For the sample window used, however, the increase in liquidity was found to be relatively modest compared to typical intraday calling mechanisms, which require an additional half, or whole, margin deposit.

---

<sup>(14)</sup> In some circumstances, the relatively small sample size employed (500 observations) might be considered a problem in applying EVT estimation techniques. In the present study, however, we have addressed this issue by using a variant of the Hill estimator which produces unbiased estimates for the tail index, without loss of efficiency, for samples as small as 250 observations (see Huisman *et al* (2001) for further details).

## Tables

**Table A: Descriptive statistics for the Brent and the FTSE 100**

	FTSE 100	Brent
Mean	1.51	6.55
St.Dev	113	215
Min	-608	-1451
Max	637	1315
Skewness	-0.03	-0.08
Excess Kurtosis	2.20	5.52
Kolmogorov-Smirnov	0.04	0.07
Jarque-Bera	633	3860
Ljung-Box	53.9	62.2
#Observations	3147	3034
Dates	2/1/90-13/08/02	2/1/90-13/08/02

Descriptive statistics for log returns are expressed in basis points. The 5% critical values for the Kolmogorov-Smirnov statistic, the Ljung-Box with 30 lags and the Jarque-Bera test are 0.02, 43.77 and 5.99, respectively.

**Table B: Initial margin changes and exceedances for the Brent and the FTSE 100 contracts**

	Start	End	# obs.	# changes	# exceed.
Brent	4-01-99	11-02-02	749	24	9
FTSE	6-01-98	11-02-02	1026	5	0

An initial margin exceedance is said to occur if the absolute value of the price change between two consecutive days is greater than the initial margin, ie  $|\Delta P_t| > M_t$ , where  $M_t$  is the margin level for day  $t$  and  $\Delta P_t = P_t - P_{t-1}$ .

**Table C: Unconditional margins and exceedances for the Brent contract**

	Right (%)	Left (%)	Margin (right) (USD)	Margin (left) (USD)	# exceed. Right	# exceed. Left
Hist.	6.06	-5.51	1.25	1.07	30	29
Normal	5.08	-4.95	1.04	0.96	50	48
Stud-t	5.56	-5.43	1.14	1.06	39	32
EVT	8.71	-11.49	1.82	2.43	7	4

Theoretical initial margins are reported for both long and short positions. For the EVT case, left and right tails are estimated separately. The tail-shape parameter,  $\xi$ , is equal to 0.29 for the left tail and 0.16 for the right tail. Initial margins are estimated to provide a 2% non-coverage probability (1% probability in each tail). At this coverage level, the expected number of exceedances is 30.

**Table D: Backtesting performance of the four distributions for the Brent contract**

	Left tail				Right tail			
	5%	1%	0.5%	0.135%	5%	1%	0.5%	0.135%
Hist.	137	35	18	9	129	29	15	8
Normal	116	43	31	21	140	50	30	10
Stud-t	125	27	20	2	155	27	10	5
EVT	79	26	16	3	83	30	17	9
<b>Expected</b>	127	25	13	3	127	25	13	3

Margin exceedances are shown for the Brent contract assuming theoretical margins based on each of the four distributions. Four non-coverage probabilities are assumed: 5%, 1%, 0.5% and 0.135%. The sample size is  $n = 2534$ .

**Table E: Backtesting performance of the four distributions for the FTSE 100 contract**

	Left tail				Right tail			
	5%	1%	0.5%	0.135%	5%	1%	0.5%	0.135%
Hist.	132	28	15	7	141	26	14	7
Normal	109	24	15	7	141	34	25	13
Stud-t	118	18	10	3	142	29	18	8
EVT	54	21	12	7	81	24	15	8
<b>Expected</b>	132	26	13	4	132	26	13	4

Margin exceedances are shown for the FTSE 100 contract assuming theoretical margins based on each of the four distributions. Four non-coverage probabilities are assumed: 5%, 1%, 0.5% and 0.135%. The sample size,  $n = 2646$ .



**Table F: Estimated additional liquidity required by market, conditional on margin being exceeded**

	FTSE 100 (£mn)		Brent (\$mn)	
	Left	Right	Left	Right
Min	20	19	66	74
Max	320	361	145	177
Average	78	86	82	91

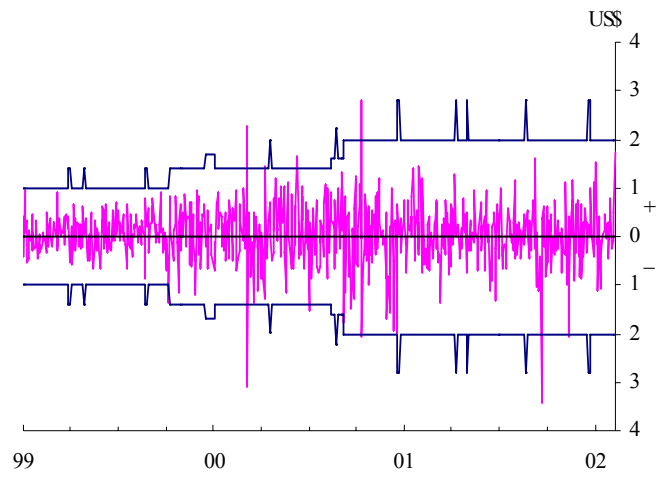
Average open interest 02/02	464,600	254,400
Initial margin rate	£350	US\$2
Average index price	£5960	US\$24

**Table G: Estimated additional liquidity required as a proportion of margin already posted**

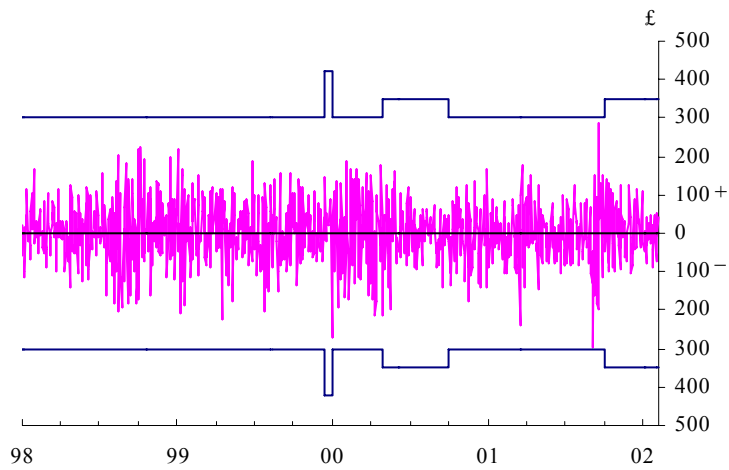
	FTSE 100		Brent	
	Left	Right	Left	Right
Min (%)	1	1	6	7
Max (%)	10	11	14	17
Average (%)	2	3	8	9

## Charts

**Chart 1: Brent margin and price variation (4-1-99 to 11-2-02)**

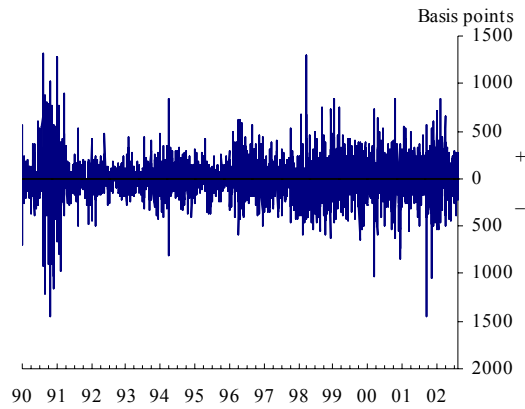


**Chart 2: FTSE 100 margins and price variation (6-1-98 to 11-2-02)**

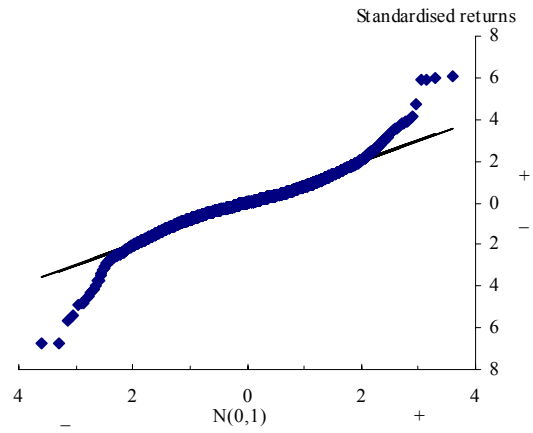


### Chart 3: The Brent contract

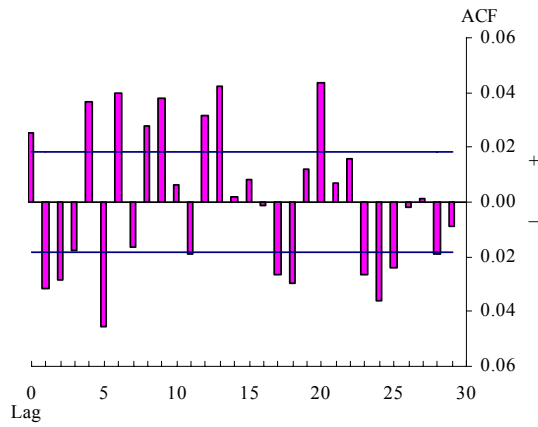
A: Daily ln returns



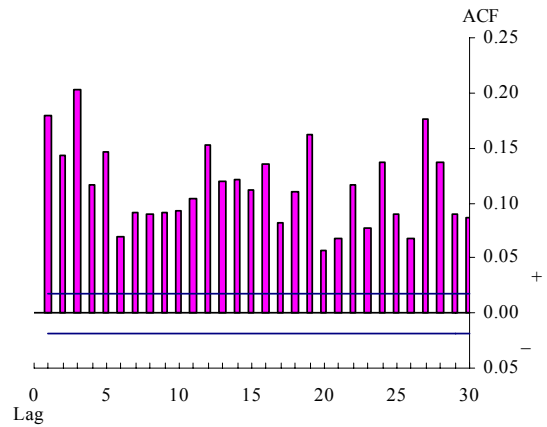
B: QQ plot



C: Autocorrelation function for return levels

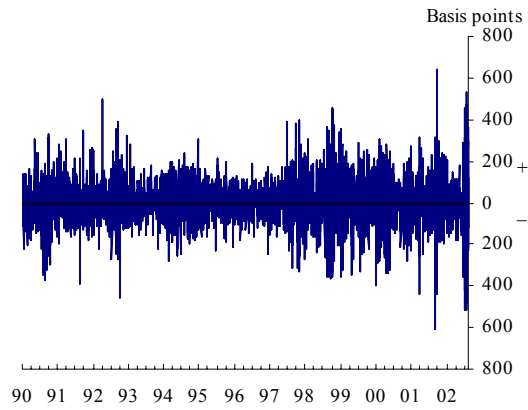


D: Autocorrelation function for squared returns

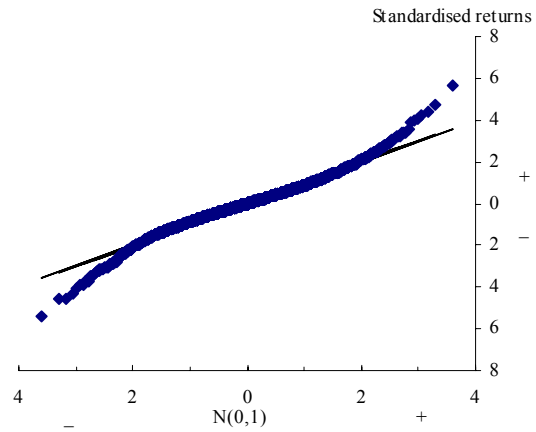


### Chart 4: The FTSE 100 contract

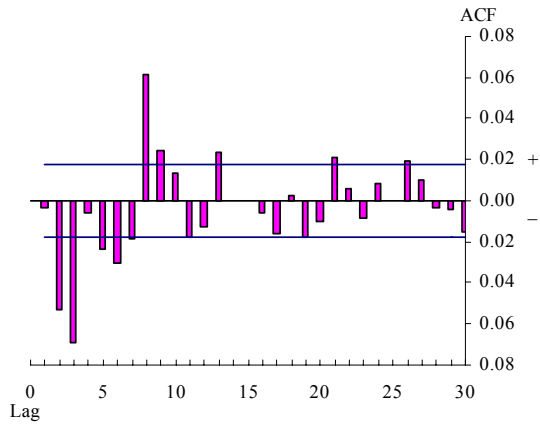
A: Daily ln returns



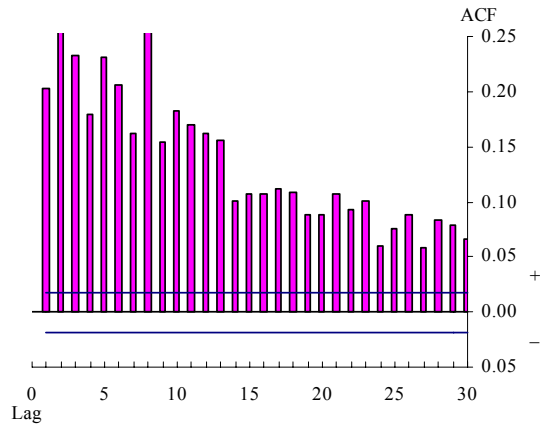
B: QQ plot



C: Autocorrelation function for return levels

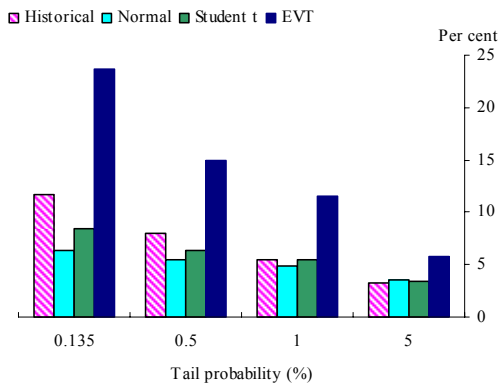


D: Autocorrelation function for squared returns

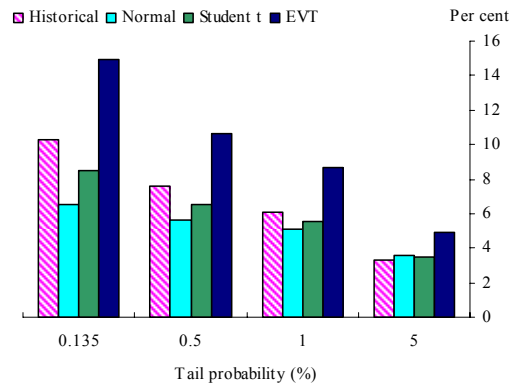


### Chart 5: Unconditional margins

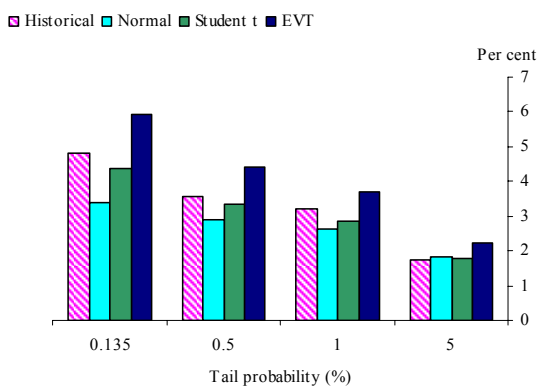
A: Brent - left tail



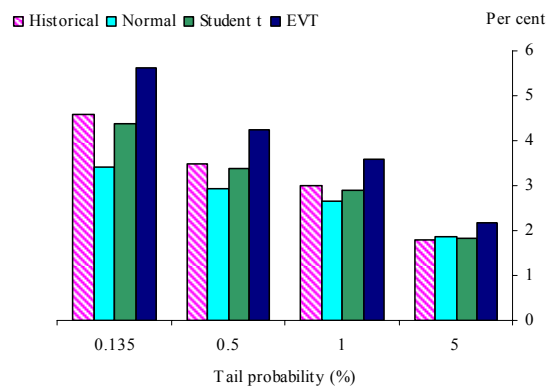
B: Brent - right tail



C: FTSE 100 - left tail

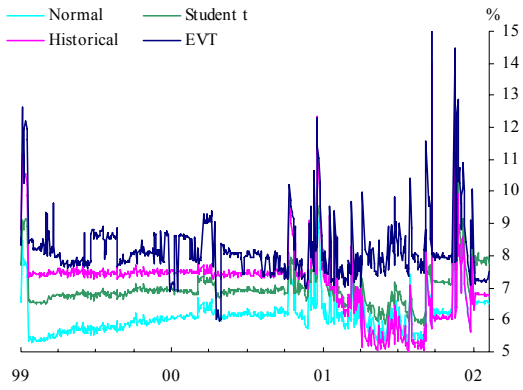


D: FTSE 100 - right tail

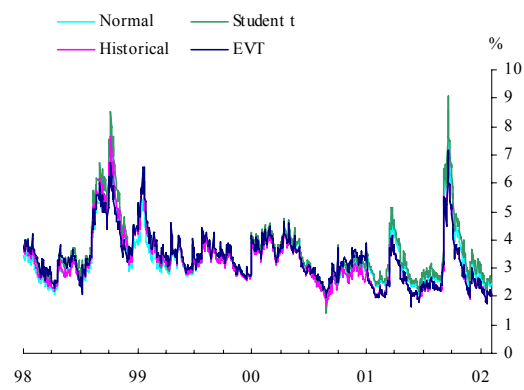


### Chart 6: Theoretical conditional margin at 99.5% for positive changes in return

A: Brent contract

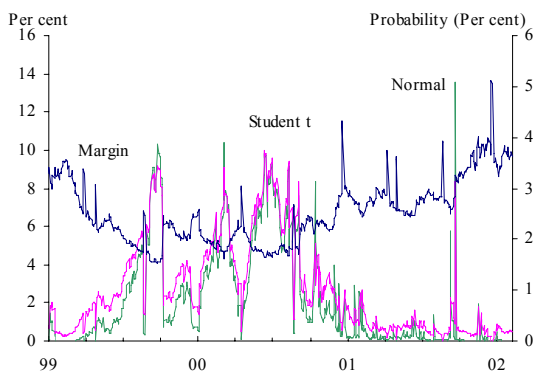


B: FTSE 100 contract

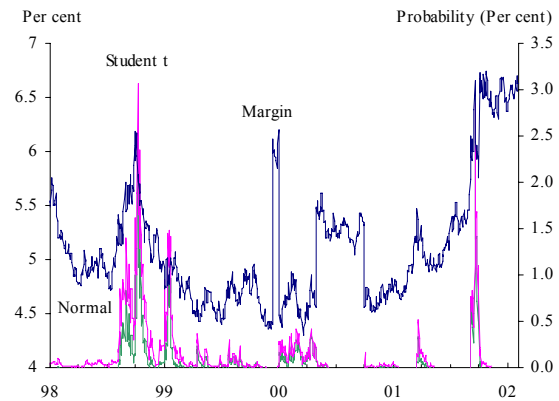


### Chart 7: Non-coverage probabilities

A: Brent contract



B: FTSE 100 contract



## Appendix A: Relevant results from EVT

Suppose <sup>(15)</sup> we have a sequence of iid random variables  $\{X_1, X_2, X_3, \dots\}$  with common distribution function  $F$ . Define the *sample maxima* as  $M_1 \equiv X_1$ ,  $M_n \equiv \max\{X_1, X_2, X_3, \dots, X_n\}$  for  $n \geq 2$ . The distribution function of  $M_n$  is given by,

$$P(M_n \leq x) = P(X_1 \leq x, \dots, X_n \leq x) = F^n(x), \quad x \in \mathfrak{R}, n \in N.$$

It is usually the case that the distribution function  $F$  is unknown. The Fisher-Tippet theorem, however, shows that approximate families for  $F^n(x)$  can be derived by examining extremes.

### Theorem (Fisher-Tippet):

Let  $\{X_n\}$  be a sequence of iid random variables. If there exist norming constants  $c_n > 0$  and  $d_n \in \mathfrak{R}$  and some non-degenerate distribution function  $H$  such that

$$\frac{M_n - d_n}{c_n} \xrightarrow{d} H,$$

then  $H$  belongs to the type of one of the following three distribution functions:

$$\begin{aligned} \text{Fréchet:} \quad \Phi_\alpha(x) &= \begin{cases} 0 & x \leq 0 \\ \exp\{-x^{-\alpha}\} & x > 0 \end{cases} \quad \alpha > 0, \\ \text{Weibull:} \quad \Psi_\alpha(x) &= \begin{cases} \exp\{-(-x)^{-\alpha}\} & x \leq 0 \\ 1 & x > 0 \end{cases} \quad \alpha > 0, \\ \text{Gumbel:} \quad \Lambda(x) &= \exp\{-e^{-x}\} \quad x \in \mathfrak{R}. \end{aligned}$$

**Proof:** see Embrechts *et al* (1997, page 122).

This results says that the rescaled sample maxima,  $(M_n - d_n)/c_n$ , converge in distribution to one of three types — Fréchet, Weibull or Gumbel — known as extreme value distributions. Moreover, the result is obtained irrespective of the population distribution function,  $F$ .

Each of the three distributions has a characteristic tail shape. The Weibull distribution has a short, truncated tail. The Gumbel distribution has a thin tail. The Fréchet has fat tails, and is generally found to be most appropriate for modelling financial distributions.

All the three underlying extreme value distributions can be summarised in a simple functional form  $H_\xi(x)$ , known as the generalised extreme value (GEV) distribution.

$$H_\xi(x) = \begin{cases} \exp\left\{-\left(1 + \xi x\right)^{-\frac{1}{\xi}}\right\} & \text{if } \xi \neq 0, \\ \exp\{-e^{-x}\} & \text{if } \xi = 0, \end{cases}$$

where  $1 + \xi x > 0$  and  $\xi \equiv 1/\alpha$ . The parameter  $\xi$  is called the *tail index*.

---

<sup>(15)</sup> We follow Embrechts, Klüppelberg and Mikosch (1997).

If the distribution function  $F$  is such that  $(M_n - d_n)/c_n$  converges to  $\Phi_\alpha(x)$ , it is said to be in the domain of attraction of the Fréchet distribution, that is,  $F \in MDA(\Phi_\alpha)$ . For example, the Pareto, the Cauchy and the Burr distributions all belong to the domain of attraction of the Fréchet distribution. The distributions belonging to  $F \in MDA(\Phi_\alpha)$  all have fat tails and hence are deemed suitable to model financial time series.

Similar domains of attraction are defined for the short-tailed Weibull distribution and the thin-tailed Gumbel distribution.<sup>(16)</sup> In the Fréchet case, the complementary distribution function  $\bar{F}(x) \equiv 1 - F(x)$  can be expressed as a simple asymptotic form,  $\bar{F}(x) \approx L(x)x^{-\alpha}$ , where  $L(x)$  is a slowly varying function.<sup>(17)</sup> Importantly, this result shows that, for  $x$  large enough, the tail of the distribution function can be approximated by a power function. In the case of the Gumbel distribution, the asymptotic form has an exponential type behaviour.

In the case  $F \in MDA(\Phi_\alpha)$ , we can set  $L(x) = Cx^{-\alpha}$  and write  $\bar{F}(x) \approx Cx^{-\alpha}$  and

$$F'(x) = f(x) = \alpha Cx^{-\alpha-1}.$$

Given the above, for  $F \in MDA(\Phi_\alpha)$ , the expected loss conditional on  $X$  exceeding  $x_q$  can be calculated as:

$$E[X|X > x_q] = \frac{\int_{x_q}^{\infty} x \alpha Cx^{-\alpha-1} dx}{Cx_q^{-\alpha}} = \frac{1}{1-\xi} x_q, \quad \xi = 1/\alpha$$

$\alpha$  is calculated from maximum likelihood estimation (the Hill's estimate).

---

<sup>(16)</sup> See Embrechts, Klüppelberg and Mikosch (1997) Section 3.3 for the MDA conditions.

<sup>(17)</sup> A positive function  $L$  defined on  $(0, \infty)$  is slowly varying if  $\lim_{x \rightarrow \infty} L(tx)/L(x) = 1$ ,  $t > 0$ .



## Appendix B: Hill's estimator small-sample properties

Suppose we are given  $n$  observations  $\{X_1, \dots, X_n\}$  and we denote order statistics by  $X_{1:n} \leq \dots \leq X_{n:n}$ , that is, the  $n^{\text{th}}$  order statistic is simply the largest element in the sample, the  $n-1^{\text{th}}$ , the second largest element, and so on. The Hill estimator based on  $n$  observations and the first  $k$  order statistics is,

$$\hat{\xi} = \hat{\xi}_{k,n}^{(H)} = \frac{1}{k} \sum_{j=1}^k \log X_{n-j+1:n} - \log X_{n-k:n}$$

Dacorogna, Muller and Pictet (2000) show that the asymptotic expected value and variance of the Hill estimator are given by,

$$E[\hat{\xi}_{k,n}^{(H)}] \approx \frac{1}{\alpha} - \frac{b\beta}{\alpha(\alpha + \beta)} a^{-\frac{\beta}{\alpha}} \left(\frac{k}{n}\right)^{\frac{\beta}{\alpha}} \quad (1)$$

$$V[\hat{\xi}_{k,n}^{(H)}] \approx \frac{1}{k\alpha^2} \quad (2)$$

where  $\alpha, \beta > 0$ ,  $a, b \in \mathcal{R}$  and are such that distribution function  $F(x)$  can be approximated by

$$F(x) \approx 1 - ax^\alpha(1 + bx^{-\beta})$$

Note that according to (1), the bias increases with  $k$ , suggesting that a small value should be chosen for  $k$ . (2), however, shows that the variance of the estimator increases for low values of  $k$ .

Huisman *et al* (2001) suggest linearising (1) with respect to  $k$ , obtaining,

$$\hat{\xi}_{k,n}^{(H)} = \beta_0 + \beta_1 k + \varepsilon(k), \quad k = 1, \dots, \bar{k} \quad (3)$$

for an appropriate value of  $\bar{k} < n$ . We can rewrite (3) in matrix form as  $\xi = \mathbf{Z}\beta + \varepsilon$  where  $\mathbf{Z}$  is a  $(\bar{k} \times 2)$  matrix with ones in the first column and the vector  $[1, 2, \dots, \bar{k}]'$  in the second. Using (3), we can apply a weighted least square method (WLS) with weighting matrix  $\mathbf{W}$  with the vector  $[\sqrt{1}, \dots, \sqrt{\bar{k}}]'$  in the main diagonal and zeros elsewhere. The WLS estimator will then be

$$\hat{\xi}_{WLS} = (\mathbf{Z}'\mathbf{W}'\mathbf{W}\mathbf{Z})^{-1}\mathbf{Z}'\mathbf{W}'\mathbf{W}\xi$$

and the estimated tail-index  $\xi$  is equal to the first element of the vector  $\hat{\xi}_{WLS}$ . Kiesel *et al* (2001) extend this approach by deriving an approximation of the variance/covariance matrix of the vector of innovations  $\varepsilon$ , so that they can apply a generalised least square estimator for the tail-index  $\xi$ . See Appendix A in Kiesel *et al* (2001) for details.

## References

- Artzner, P, Delbaen, F, Eber, J M and Heath, D (1997)**, 'Thinking coherently', *Risk*, Vol. 10, pages 68-71.
- Barone-Adesi, G, Giannopoulos, K and Vosper, L (2002)**, 'Backtesting derivative portfolios with filtered historical simulation (FHS)', *European Financial Management*, Vol. 8, pages 31-58.
- Bates, D S and Craine, R (1999)**, 'Valuing the futures market clearinghouse's default exposure during the 1987 Crash', *Journal of Money, Credit and Banking*, Vol. 31, pages 248-72.
- Beirlant, J, Vynckier, P and Teugels, J (1996)**, 'Excess functions and estimation of the extreme value index', *Bernoulli*, Vol. 2, pages 293-318.
- Booth, G G, Broussard, J P, Martikainen, T and Puttonen, V (1997)**, 'Prudent margin levels in the Finnish stock index futures market', *Journal of Management Science*, Vol. 43, pages 1,177-88.
- Broussard, J P (2001)**, 'Extreme-value and margin setting with and without price limits', *Quarterly Review of Economics and Finance*, Vol. 41, pages 365-85.
- Cornew, R W, Town, D E and Crowson, L D (1984)**, 'Stable distributions, futures prices and the measurement of trading performance', *Journal of Futures Markets*, Vol. 4, pages 531-57.
- Cotter, J (2001)**, 'Margin exceedences for European stock index futures using extreme value theory', *Journal of Banking and Finance*, Vol. 25, pages 1,475-502.
- Cotter, J and McKillop, D (2000)**, 'The distributional properties of futures prices', *Journal of Business Finance and Accounting*, Vol. 27, pages 487-510.
- Dacorogna, M M, Muller, U A and Pictet, O V (2000)**, 'Hill, bootstrap and jackknife estimators for heavy tails', in Adler, R, Feldman, R and Taqqu, M (eds), *A practical guide to heavy tails: statistical techniques and applications*, Birkhauser.
- Danielsson, J, de Haan, L, Peng, L and de Vries, C (2001)**, 'Using a bootstrap method to choose the sample fraction in tail index estimation', *Journal of Multivariate Analysis*, Vol. 76, pages 226-48.
- Danielsson, J and Morimoto, Y (2000)**, 'Forecasting extreme financial risk: a critical analysis of practical methods for the Japanese market', *Monetary and Economic Studies*, Vol. 18, Bank of Japan.
- Dewachter, H and Gielens, G (1999)**, 'Setting futures margins: the extremes approach', *Journal of Applied Financial Economics*, Vol. 9, pages 173-81.
- Drees, H and Kaufmann, E (1998)**, 'Selecting the optimal sample fraction in univariate extreme value estimation', *Journal of Stochastic Processes and their Applications*, Vol. 75, pages 149-72.
- Embrechts, P, Klüppelberg, C and Mikosch, T (1997)**, *Modelling extremal events for insurance and finance*, Berlin: Springer.

**Fenn, G W and Kupiec, P (1993)**, 'Prudential margin policy in a futures-style settlement system', *Journal of Futures Markets*, Vol. 13, pages 389-408.

**Figlewski, S (1984)**, 'Margins and market integrity: margin setting for stock index futures and options', *Journal of Futures Markets*, Vol. 4, pages 385-414.

**Gay, G D, Hunter, W C and Kolb, R W (1986)**, 'A comparative analysis of futures contract margins', *Journal of Futures Markets*, Vol. 6, pages 307-24.

**Gouriéroux, C (1997)**, *ARCH models and financial applications*, New York: Springer Series in Statistics.

**Hansen, P R and Lunde, A (2001)**, 'A comparison of volatility models: does anything beat a GARCH?', *Centre for Analytical Finance Working Paper no .84*, Aarhus School of Business, University of Aarhus.

**Hill, B (1975)**, 'A simple general approach to inference about the tail of a distribution', *Annals of Mathematical Statistics*, Vol. 3, pages 1,163-74.

**Huisman, R, Koedijk, K, Kool, C and Palm, F (2001)**, 'Tail index estimates in small samples', *Journal of Business and Economic Statistics*, Vol. 19, pages 208-16.

**Kiesel, R, Perraudin, W and Taylor, A (2001)**, 'An extremes analysis of VaRs for emerging market benchmark bonds', proceedings of the 6<sup>th</sup> econometrics workshop, Karlsruhe, 2001.

**Knott, R and Mills, A (2002)**, 'Modelling risk in central counterparty clearing houses: a review', Bank of England *Financial Stability Review*, Issue 13, pages 162-74.

**Kupiec, P (1997)**, 'Margin requirements, volatility, and market integrity: what have we learned since the Crash?', *Finance and Economics Discussion Series FEDS no. 97*, Board of Governors of the Federal Reserve System.

**Longin, F M (1999)**, 'Optimal margin level in futures markets: extreme price movements', *Journal of Futures Markets*, Vol. 19, pages 127-52.

**McNeil, A J and Frey, R (2000)**, 'Estimation of tail related risk measures for heteroscedastic financial time series: an extreme value approach', *Journal of Empirical Finance*, Vol. 7, pages 271-300.

**Venkateswaran, M, Brorsen, B W and Hall, J A (1993)**, 'The distribution of standardised futures price changes', *Journal of Futures Markets*, Vol. 13, pages 279-98.

**Warshawsky, M J and Dietrich, E (1989)**, 'The adequacy and consistency of margin requirements in the markets of stocks and derivative products', *Federal Reserve Working Paper no. 158*.