



# ARTA NEWS

February 2009 - Issue #9

## In this issue

- > Auckland's rail electrification right on track
- > Botany local and Manukau cross-town bus routes
- > Northern Busway one year on
- > New Lynn update
- > MAXX tertiary campaign 2009

### Auckland Regional Transport Authority

Phone: +64 9 379 4422  
Fax: +64 9 379 4423  
Email: [ARTAenquiry@arta.co.nz](mailto:ARTAenquiry@arta.co.nz)  
Address: Level 3, 21 Pitt Street  
Private Bag 92 236  
Auckland Mail Centre,  
Auckland 1142

[Update your details](#) | [Refer a friend](#) | [Privacy Policy](#)

## Auckland's rail electrification right on track

International rail rolling stock manufacturers and suppliers from across the world have responded strongly to a call for Expressions of Interest in response to the release of the Auckland Regional Transport Authority's Electric Multiple Unit (EMU) Expression of Interest (EOI) document which was advertised on 23 December 2008 and closed on 12 February this year.

In December last year, the Auckland Regional Council (ARC) made an historic decision for the region to approve ARTA taking a major step forward towards the purchase of a new fleet of 140 electric train cars for Auckland.

The EOI responses are currently being shortlisted before the final formal tender document, RFP (request for proposal), is released to up to four short-listed tenderers in May.

The tender process will be concluded by the end of this year with the signing of a contract for a new fleet (140 cars) of Electric Multiple Units".

Electrification is part of a wider programme of public transport infrastructure improvements to take place over the next five years, including the achievement of 10-minute train frequencies in peak hours, new stations, opening the Onehunga branch and Manukau spur lines, strengthened bus and ferry networks, integrated ticketing and real time passenger information.

As a result of those improvements, rail patronage is expected to more than double by 2016.



## PUBLIC TRANSPORT PATRONAGE HITS NEW RECORDS

Combined patronage (bus, train and ferry) for the six months to December was 8.9% higher than the same six months the previous year

Since the introduction of free travel for SuperGold Card holders (October 2008), senior citizen patronage was up 119% for the three months to December compared to the same three months the previous year

For the 12 months to December 2008, Auckland public transport patronage hit 56,793,178, the highest since the mid-1980's.

Repairs to the Half Moon Bay  
Vehicular Ferry Terminal  
structure will take place from 18

## More direct, simpler routes for Botany Local and Manukau Cross-town bus services



ARTA has been working with the Botany and Manukau community to provide more direct, more frequent bus services and routes that are much easier for passengers to understand.

Following extensive consultation in August 2008, which resulted in overwhelmingly positive feedback, ARTA implemented the changes to Botany Local and Manukau Cross-town bus routes on 1 February, which have been simplified with some extensions and new timetables.

The routes affected are in areas that have developed rapidly in recent years, and by simplifying the network of bus routes that has developed along with them, ARTA will be able to offer more direct services, some of which will have increased frequency at peak times.

The changes to the Botany Local and Manukau Cross-town routes reflect ARTA's focus of making public transport simple, easy to understand and frequent, in order to make it even more attractive to greater numbers of people. There are now more connections to local town centres, institutes and with rail services.

Bus patronage in the region has increased by 29% since March 2006, from 196,588 to 253,490.

**Northern Busway - one year on and a major success!**

Feb - 4 March, following damage from recent vessel impact.

The damaged deck structure and steel pile will be removed and replaced. During the same time, additional steel piles and bracing will be installed to provide a more robust structure. New timber fender piles and fender tyres will also be installed as part of the wharf renewal programme.



**ARTA is encouraging Aucklanders' to enjoy the summer this February by getting on their bikes and giving cycling a go.**

February 2009 marks Bike Wise Month, an annual cycling initiative aimed at increasing cycling among adults and children and promoting safety awareness.

100,000 people took to their bikes in 2008, when the initiative was just a week in length. As a result of its popularity, this year's event has been extended to last the whole month and will include fun cycling activities and competitions, which will be held across the month.

[>> Bike Wise events in Auckland](#)

Additional funding has been approved to complete the renewal of



The Northern Busway, one of the most successful projects in 2008 and a milestone for Auckland public transport services, is celebrating its first anniversary this month.

One year after the opening and the Busway has proved to be a major achievement with over 7,000 passengers being carried by bus over the harbour bridge to Auckland from the North Shore each week-day between 7am and 9am.

North Shore City Mayor, Andrew Williams is delighted with the tremendous take-up of the Busway over the last 12 months.

"The Busway has experienced a phenomenal increase in patronage helped in no small way by our feeder bus services, which come from all over the North Shore. It's also been fantastic to see the park and ride facilities full - these symbolise just how successful the result of this North Shore City Council, ARTA and NZTA partnership has been."

Not only is the busway a benefit for working commuters, but also travellers to and from the Auckland Airport. The busway represents the first public transport service linking the North Shore with Auckland International Airport – the Northern Flyer integrated ticket – a major triumph for North Shore-ites! Northliner and Shore Shuttle services can now also use the busway creating faster, more reliable access to the Auckland Airport from the North Shore.

#### Busway facts and figures:

- If all the people using the busway to travel to the CBD were to use cars, assuming the average car occupancy is 1.2 persons per car, then the number of cars the Busway is taking off the roads is around 5,100 in morning peak.
- This represents the equivalent of 2 motorway lanes inbound and 2 motorway lanes outbound.
- The Busway cost \$300 million to build.
- In the current economic climate, the cost benefits of investing in public transport to assist in stimulating the economy are a highly important, comparatively cost-effective consideration, congestion benefits another in a city often bought to gridlock by cars.
- 5,100 cars off the road between the North Shore and Auckland through patronage on the Busway, also represents greater ease of movement for road freight.

#### the concrete wharf substructure for all of Piers 1 and 2 at the Downtown Ferry Terminal.

The scope of remedial works at the Downtown ferry wharves has been revealed to be substantially greater than indicated by the initial investigation, and this work is required to extend the working life of the ferry terminal structures by another 20 years.

The additional work will extend the current contract through until mid-2010.

ARTA will continue to liaise closely with ferry operators and local businesses to coordinate the sequencing of these essential works in an effort to minimise disruption and inconvenience.

**Ritchies Ltd are taking action to keep Auckland's air clean with the introduction of the first Euro 5 ERG technology vehicles to the Northern Express bus fleet, the flagship service provided under contract to ARTA.**

The new buses meet the latest European environment emission standard, Euro 5 ERG, and will provide better fuel efficiency and lower emission levels.



As Aucklanders left the city for their Christmas and New Year holiday, ONTRACK workers steamed ahead to take advantage of quiet time on the rail network.

Major makeover in store for New Lynn rail

## station



A major makeover is instore for the New Lynn rail station, beginning this year, which will allow for more frequent and reliable passenger services and will aim to improve pedestrian safety and traffic flow around the rail network.

The rail station is part of an integrated bus and train transport interchange at the junction of Clark St, Totara Avenue and Memorial Drive in New Lynn. ARTA is responsible for funding and managing the rail station component, while Waitakere City Council is similarly responsible for an adjacent Bus Interchange.

Following public consultation with the New Lynn community in 2008, ARTA has been working with its partners to put together a design report and concept designs.

It is proposed that an island platform will be located within a trench, positioned between Memorial Drive to the west and Hetana Street to the east.

Primary access to the station platform will be via the proposed interchange sited over the trench between Rankin Avenue and Memorial Drive. Bus bays are located to the north and south of the interchange, on Totara Avenue and Clark Street respectively.

The interchange will accommodate facilities such as a waiting area, bike racks, public toilets, a cleaner's room and staff facilities. Access from the interchange to the platform will be possible via stairs, lift or escalators. A second stairway located at the eastern end of the platform connects to Hetana Street.

The projects form part of the overall DART 6 rail corridor project commissioned by Ontrack, which separates the rail corridor through New Lynn from the local roading and pedestrian network via 'grade separation'. This means the rail will run in a wide trench with bridge crossings for roads and pedestrians above. The current single track will be double-tracked as part of the upgrade, allowing faster and more frequent train services on completion.

Fletcher Construction won the tender for the ONTRACK works, and is well underway with the trench formation and civil works.

### **New Lynn Rail Station - Concept Designs:**

Work carried out over Christmas and New Year included:

- 5km of track lifted and over 7km of new track laid
- More than 600 people working around the clock
- More than 50 excavators and 100 trucks
- Over 50,000m<sup>3</sup> of dirt excavated out of the rail corridor in less than a week
- 10,000m<sup>3</sup> ballast put back in
- 10,000 sleepers laid

Work scheduled for the near future includes additional track work at Britomart that will deliver timetable improvements to the Southern and Eastern Lines later this year.

Work on the new Newmarket station and double-tracking are well underway, and the Remuera Rd bridge is being steadily replaced over the next 10 months so electric trains can pass underneath.

The continued works on the Western Line and at Newmarket will enable improved train frequency and services operating 7 days a week from mid-2010.

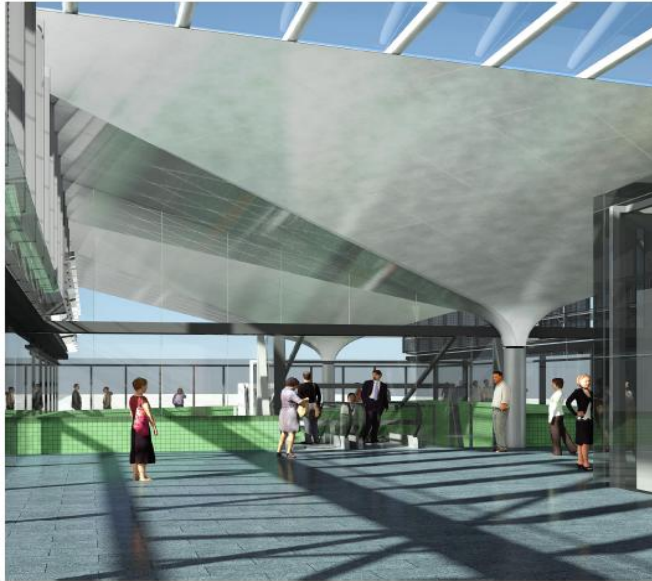


The first edition of MAXX News was introduced on Monday 16 February.

The newsletter has been developed by ARTA to inform customers of improvements and changes to the MAXX public transport system and will also include travel tips and competitions.



*View at concourse level:*



*View from platform level (1):*



*View from platform level (2):*

The newsletter will be distributed on a quarterly basis at major bus and train stations and ferry terminals.

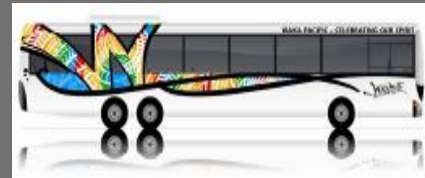
MAXX News can also be downloaded from the MAXX website at [www.maxx.co.nz/home/maxx\\_news\\_february\\_2009.html](http://www.maxx.co.nz/home/maxx_news_february_2009.html)



**A new service, Waka Pacific, is taking to the streets of Counties Manukau as of Monday, 16 February 2009.**

Waka Pacific joins the NZ Bus family of community brands, which includes North Star, GO WEST and Metrolink in Auckland and GO Wellington and the Valley Flyer in Wellington.

The bus has been branded to ensure it reflects that diversity of the communities that call Counties Manukau home, and are a symbol of its richness and vibrancy.





## MAXX Tertiary Campaign 2009

***"The MAXX Online Journey Planner - think of it as a timetable with an IQ of 163"***

University holidays are coming to a close this month and 40,000 students will be flocking to the city to return to University. Over three quarters of these students will be using public and active transport every day.

Each year ARTA runs the MAXX Tertiary Campaign to target these students and familiarise them with the transport solutions available to them.

The MAXX Tertiary Campaign is taking place again this year and will be running from 16th February to the 31st of March 2009.

The focus of this year's Tertiary Campaign is a prize draw competition encouraging students to try out the online journey planner on the MAXX website. Students that take advantage of the online journey planner will go in the draw to win \$300 worth of supermarket vouchers.

The online journey planner isn't just for students! If you are planning a trip around Auckland, than the MAXX journey planner is the way to go. Give it a go at: [www.maxx.co.nz](http://www.maxx.co.nz)

Other promotions available to full time students include discounts on adult cash fares, which applies to tertiary 10-tickets for buses, trains and selected ferries, as well as the 7-day Northern Pass. Since an increase in the tertiary discount to 40%, sales increased by 67% for the 2008 calendar year compared to 2007.

**Tertiary Campaign posters (click image to enlarge):**

**PUT IN WHERE YOU LIVE, WHERE YOU STUDY, BE IN TO WIN \$300 WORTH OF SUPERMARKET VOUCHERS.\***

**STUDENTS - GO TO [MAXX.CO.NZ](http://MAXX.CO.NZ) AND PUT IN YOUR JOURNEY DETAILS. BUSS OUT HOW IT ALL WORKS - AND GO IN THE DRAW TO WIN.**

The MAXX and the services please only apply to Auckland City, train or ferry. You only need to fill in what you're getting, a date from the options they're making for you.

**GIVE IT A GO. TAKE YOUR NEXT JOURNEY ON A BUS, TRAIN OR FERRY!**

Contest runs from 18 February to 31 March 2011.

SCOFF YOUR CL, KILL TIME IN MAXX'S BEST DISCOUNTS ON BUS, TRAIN AND RAILROAD TRIP MAXX!



**GET STUDENT DISCOUNTS ON PUBLIC TRANSPORT FARES.\*\***

→ **VISIT [MAXX.CO.NZ](http://MAXX.CO.NZ) FOR FULL INFORMATION ON:**

- Discounts available to full time tertiary students
- The MAXX Student ID sticker needs to be presented when buying your discounted ticket and scanning on public transport
- Discounting is not available to those taking evening buses, taxis or ferries within Auckland

**UNIVERSITY OF AUCKLAND STUDENTS:**

→ Discounted bus and train tickets are available from the book in the Great City Campus or Manukau City Campus.

→ MAXX Student ID stickers are available from 23 February to 12 March from retail outlets around the City Campus as well as the Great City Campus on 27 February and the Manukau City Campus on 28 February. Tickets are not available from the Student Centre at the City Campus throughout the year.

\* There is a \$100 prize pool and one available in each week.  
\*\* Discounted fares will only apply to purchases of up to \$100 on bus and train. Discounted fares do not apply to taxis, ferries and other services. Tickets available at selected locations. Discounting is not available for services that do not have a MAXX Student ID sticker. Terms and conditions apply and are available at [maxx.co.nz](http://maxx.co.nz).



ENTER/NAME | 090 361 6888

For further patronage and project information, ARTA's Annual Report and Monthly Business Reports are available on the ARTA website, [www.arta.co.nz](http://www.arta.co.nz).



[www.arta.co.nz](http://www.arta.co.nz) | [www.travelwise.org.nz](http://www.travelwise.org.nz) | [www.maxx.co.nz](http://www.maxx.co.nz)