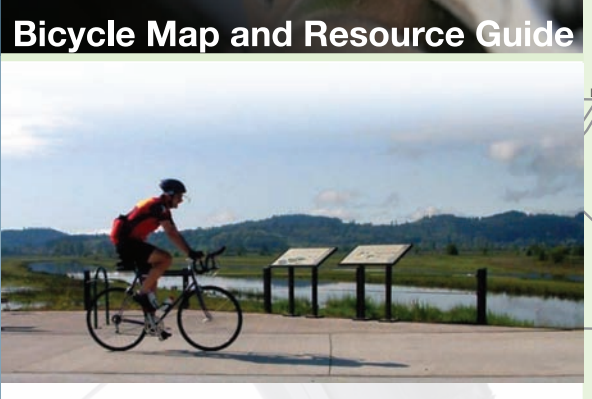
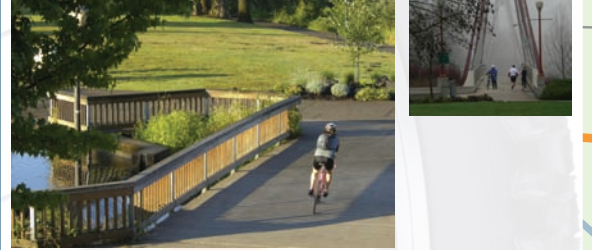


# The Eugene Springfield Bicycle Map and Resource Guide



[www.eugene-or.gov/bike](http://www.eugene-or.gov/bike)



## Points of Interest

- 1 Amtrak Train Station
- 2 Autzen Stadium
- 3 BMX Track
- 4 Civic Stadium
- 5 Cuthbert Amphitheater
- 6 EmX Stations
- 7 Eugene Airport
- 8 Greyhound Station
- 9 Hayward Field
- 10 Hult Center for the Performing Arts
- 11 LTD Station
- 12 Lane County Fairgrounds
- 13 Public Library
- 14 Restrooms (seasonal)
- 15 Restrooms (year round)
- 16 Sacred Heart Medical Center
- 17 Science Factory
- 18 Skate Parks
- 19 University of Oregon
- 20 US Post Office

## Bike Repair Shops

- 1 Bike Barn (rentals)
- 2 Bike City
- 3 Blue Heron Bicycles (rentals)
- 4 Collins Cycle Shop
- 5 Eugene Bicycle Works - CAT (rentals)
- 6 Free Wheeling Bicycle Repair and Wheel Tuning
- 7 Hutch's Bicycle Store (rentals)
- 8 LifeCycle
- 9 Paul's Bicycle Way of Life (4 locations (rentals on 5th))
- 10 REI - Recreational Equipment Inc.
- 11 Revolution Cycles
- 12 Wheelworks

## Shopping

- 5th 5th Street Market District
- DO Delta Oaks
- OC Oakway Center
- VRC Valley River Center

## Community Centers

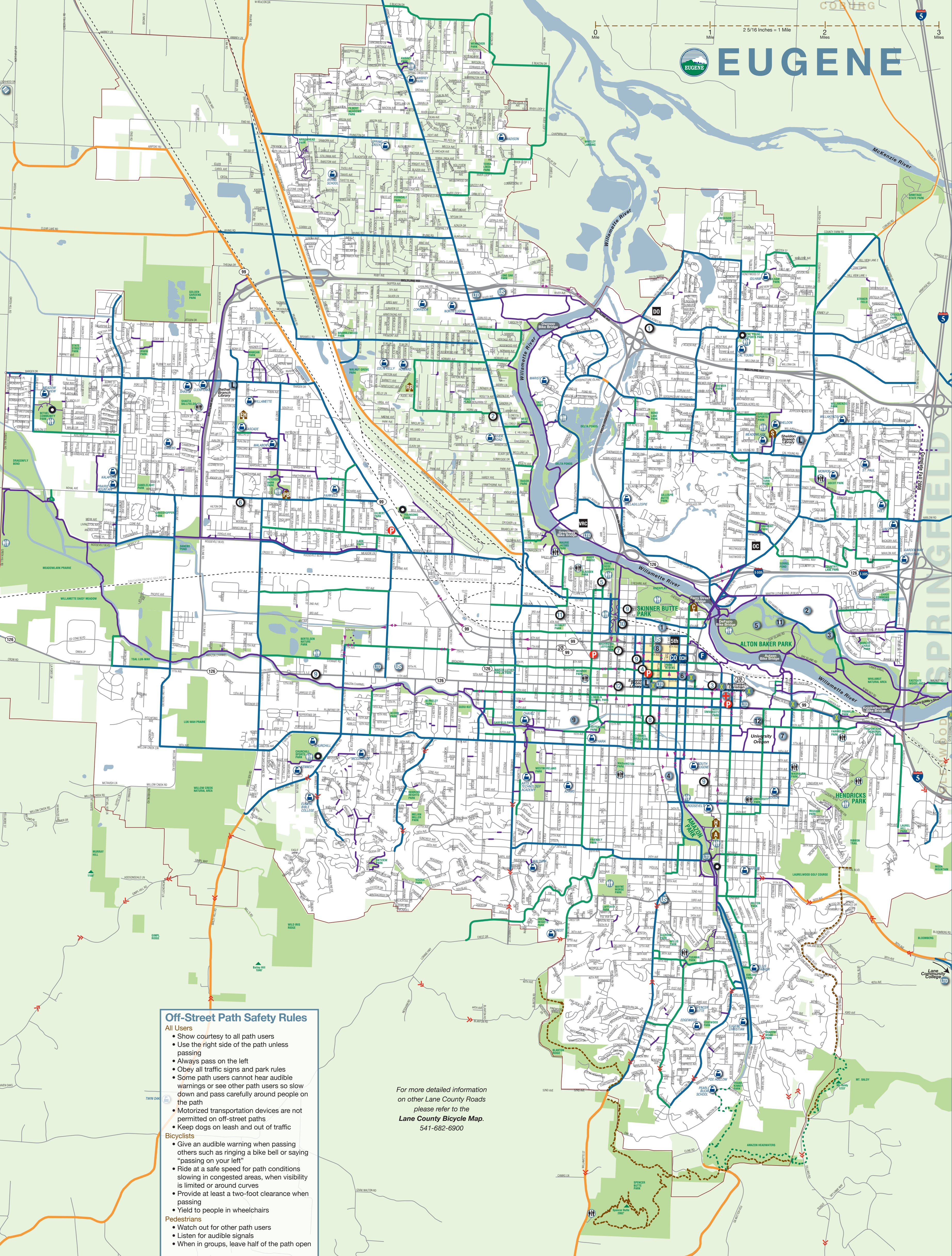
- A Amazon Community Center & Pool
- C Campbell Community Center
- E Echo Hollow Pool & Fitness Center
- H Hilyard Community Center (bike rentals/adaptive bikes)
- P Peterson Barn Community Center
- R River Road Community, Pool & Fitness Center
- S Sheldon Community Center & Pool

## Government

- CH City Hall
- PS Police Substation (bike registration)
- CC Lane County Courthouse
- F Federal Building

## LEGEND

- ### Street and Road Designations
- Shared Use Paths or Wide Sidewalks (Closed to motorized transportation devices)
  - Popular Bicycling Routes (Shared roadway on lower traffic streets)
  - Bike Lanes (Usually on higher traffic streets)
  - Shared Roadway with Wide Shoulders (On moderate and higher traffic streets)
  - Busy Streets/Highways (No bicycle facilities)
  - Busy Street Direction (One way or two way)
  - Moderate to Steep Hills
  - Shared Use Trail (Open to Mountain Bikes)
  - Hiking Trails
  - Sidewalk riding NOT allowed
  - Railroad Tracks
- ### Other Features
- Interstate Freeways
  - State Highways
  - Schools
  - Parks
  - Waterways
  - City Limits
  - Urban Growth Boundary (UGB)



## Off-Street Path Safety Rules

- ### All Users
- Show courtesy to all path users
  - Use the right side of the path unless passing
  - Always pass on the left
  - Obey all traffic signs and park rules
  - Some path users cannot hear audible warnings or see other path users so slow down and pass carefully around people on the path
  - Motorized transportation devices are not permitted on off-street paths
  - Keep dogs on leash and out of traffic
- ### Bicyclists
- Give an audible warning when passing others such as ringing a bike bell or saying "passing on your left"
  - Ride at a safe speed for path conditions slowing in congested areas, when visibility is limited or around curves
  - Provide at least a two-foot clearance when passing
  - Yield to people in wheelchairs
- ### Pedestrians
- Watch out for other path users
  - Listen for audible signals
  - When in groups, leave half of the path open

For more detailed information on other Lane County Roads please refer to the Lane County Bicycle Map. 541-682-6900