



# Twelve Women YOU SHOULD KNOW

---

2009 CALENDAR | JANUARY - DECEMBER

*Celebrating 5 years of  
Advancing Women Leaders*



**WOMEN FOR  
ECONOMIC AND  
LEADERSHIP  
DEVELOPMENT**

---

# Twelve Women YOU SHOULD KNOW

---

2009 CALENDAR | JANUARY - DECEMBER

Would you like to know more about key businesswomen in our community? Do you search for information on women whose experiences and skills make them outstanding individuals for leadership roles? Are you looking for the female “movers and shakers” in Central Ohio? If the answer is yes to one or more of these questions, then this calendar is for you!

The 2009 edition of the WELD 12 Women You Should Know Calendar, like its four predecessors, showcases women making a big difference in business in Central Ohio. The profiles of the accomplished women in the 2009 edition prove they are both role models and leaders in Ohio’s business and professional communities. We think everyone should know who they are, and we are delighted to have an opportunity to present them to you.

Your use of this calendar will support the efforts of WELD in celebrating the 12 outstanding women featured and help to promote their participation in the community’s leadership network.

The women highlighted in this calendar were selected based on their extraordinary skills and their leadership role within their respective fields. They were identified by the WELD board with the advice and counsel of individuals who represent a cross section of the Columbus community. To maintain the integrity of the calendar honoree selection process, the nominees were selected prior to the solicitation of sponsorships, and sponsorships were not solicited from the organizations these women represent.

*“Women You Should Know” is an Ohio-registered service mark of WELD.*

## WELD - Where Have We Been, and Where Are We Going?

WELD was created five years ago to address issues of economic development for women. Through our programs and services, WELD provides women with specific tools and skills needed to advance their career, while at the same time advocating for corporate strategy and public policy to support women's economic equality. Our efforts are aimed at increasing the number of women who are active participants in the leadership of area businesses, civic organizations, and government. The journey has been a very successful one, and we are poised for even greater accomplishments during our next five years.

In addition to the WELD 12 Women You Should Know Calendar, which is distributed to nearly 4,000 individuals and businesses annually, some other significant milestones include:

- Establishing an annual spring keynote event featuring a nationally recognized speaker, with attendance reaching 300 people in 2008;
- Showcasing the expertise of women business and community leaders at over 50 monthly general interest meetings since our inception; and
- Building a robust membership of 200+ individuals and seven corporate members.

As we look to our next five years, we are poised to continue furthering the mission of WELD to address economic issues affecting women in some exciting ways. Key areas of focus include:

- Building a community-wide steering committee to work on increasing the number of women on Central Ohio boards;
- Continuing to invest in collaborations that expand community dialogue, action, and positive impact. In particular, we look forward to continued partnership with NAWBO and eWomen Network in support of the Ohio Women's Business Growth Initiative we jointly developed and launched in 2008; and
- Ongoing delivery of meaningful and relevant monthly programs for our members. Based on member input, we will continue to offer the new "Power Circle" meetings serving distinctly different, but important audiences, in addition to the general interest meetings.

We are appreciative of the individual and corporate support that has enabled our success to date, and we look forward to building on this strong foundation. We hope each of you will in some way support our efforts and join us in creating an inclusive, diverse, and supportive business community for men and women.

For more information, please visit our website at [www.weldoh.org](http://www.weldoh.org) or contact us at [info@weldoh.org](mailto:info@weldoh.org).



## CANDICE BARNHARDT

*Vice President and Chief Diversity Officer, Nationwide Insurance*

Ensuring Nationwide hears and values each voice is Candice Barnhardt's mission. Candice sees her job as her life's calling. In fact, people always notice she has a gift for understanding diversity and inclusion. Candice learned from her mother to treat each person with dignity and respect, and the importance of listening to different perspectives. This legacy informs and directs Candice every day.

As Nationwide's first Chief Diversity Officer, Candice leads a staff of eight in formalizing diversity and inclusion among Nationwide's 34,000 employees. Through e-learning, internal focus groups, and associate resource groups, she gathers opinions from different generations, cultures, ethnicities, and genders to create a purposeful and committed work environment. She empowers the many diverse voices found within Nationwide.

The founder of Nationwide, Murray Lincoln said, "Within each person's hands are the tools to create their own destiny." Candice devotes her time and energy to help people choose the tools they need, and she remains committed in her belief that no human interaction is insignificant.

Candice works tirelessly to listen, to learn, and to educate all Nationwide associates on diversity and inclusion. She is not afraid to have a difficult conversation with anyone, and she always finds ways to bridge those differences and to find common ground. She has the vision of making Nationwide a great place to work and her inspiration is helping all associates within the company feel valued.

Among her accomplishments is the development of ImagiNationwide sessions, the culture change workshops that have touched more than 20,000 Nationwide associates since 2001. Candice is also active in the larger business community, recently bringing together diversity and inclusion professionals in Columbus to celebrate the city's honor as a "hidden gem of diversity" by *DiversityInc* magazine.

Compassionate, committed, and a good listener, Candice is also hard-working, driven, and innovative. She views the world through a kaleidoscope, pulling together many different perspectives to create one image.

# January

SUNDAY	MONDAY	TUESDAY	WEDNESDAY	THURSDAY	FRIDAY	SATURDAY
				1	2	3
4	5	6	7	8	9	10
11	12	13	14	15	16	17
18	19	20	21	22	23	24
25	26	27	28	29	30	31



1 New Year's Day  
 19 Martin Luther King Day

---



---



---



---



---

DECEMBER 2008

Su	Mo	Tu	We	Th	Fr	Sa
	1	2	3	4	5	6
7	8	9	10	11	12	13
14	15	16	17	18	19	20
21	22	23	24	25	26	27
28	29	30	31			

FEBRUARY

Su	Mo	Tu	We	Th	Fr	Sa
1	2	3	4	5	6	7
8	9	10	11	12	13	14
15	16	17	18	19	20	21
22	23	24	25	26	27	28



## SHARON FRANCIS

*Director, MiraCit Development Corporation, Inc.*

It's not easy being green. Sharon Francis should know. After all, helping to organize and develop Columbus' first 'green' community, Green View Estates, was no easy task.

Sharon works with MiraCit Development Corporation to redevelop the Mock Road community. Since MiraCit's inception in 1993, more than \$4.7 million in grants and contributions have been garnered to leverage over \$25 million in housing development projects.

Today, over 200 homes have been developed, in addition to a park, a charter school, a preschool, a daycare, a retirement center, and a retail center.

Sharon views her role as an advocate for the community's residents. Her activities have included board membership on the Columbus Compact, the North Central Area Commission, and the Ohio Community Development Corporation (CDC) Association. She currently serves on the Columbus and Franklin County Housing Advisory Board and the FCI, Too Childcare Center Board. Also, she and husband, Darrell, are the owners of Sentinel Alarm Company.

Spiritual in nature, Sharon is guided by her faith, as well as by her love of music. At the age of three, she began playing the piano and singing in her grandfather's church. Directing choirs since age 9, she has recorded seven gospel albums, some of which have made *Billboard's* Top 100 list. She attended Boston University, majoring in engineering and business; and in 1993, she received her Doctorate in music.

Her community involvement began while she was serving as Minister of Music and Secretary for Living Faith Apostolic Church. It was from the vision of the church, and leadership of its pastor, Bishop Edgar Posey, that MiraCit was formed and Sharon was encouraged to begin her quest into the arena of community development.

The vision continues to unfold 15 years later, and it is coming up roses for Sharon.

# February

SUNDAY	MONDAY	TUESDAY	WEDNESDAY	THURSDAY	FRIDAY	SATURDAY
1	2	3	4	5	6	7
8	9	10	11	12	13	14
15	16	17	18	19	20	21
22	23	24	25	26	27	28



- 2 Groundhog Day
- 14 Valentine's Day
- 16 President's Day
- 25 Ash Wednesday

---



---



---



---



---



---

## JANUARY

Su	Mo	Tu	We	Th	Fr	Sa
			1	2	3	
4	5	6	7	8	9	10
11	12	13	14	15	16	17
18	19	20	21	22	23	24
25	26	27	28	29	30	31

## MARCH

Su	Mo	Tu	We	Th	Fr	Sa
1	2	3	4	5	6	7
8	9	10	11	12	13	14
15	16	17	18	19	20	21
22	23	24	25	26	27	28
29	30	31				



## KATHLEEN TRAFFORD

*Partner, Porter, Wright, Morris & Arthur LLP*

One normally doesn't put the word "shy" in the same sentence as "attorney", but Kathleen Trafford does. In fact, "painfully shy" is the phrase she uses to describe the way she was as a child. However, Kathleen has become one of the most prominent and visible trial lawyers in Central Ohio and around the country.

Kathleen's counsel is often sought because of her keen problem-solving abilities. For example, she has been selected by the Private Adjudication Center at Duke University to arbitrate two national disputes.

While Kathleen earned her degree at Capital University School of Law, she also worked for the Ohio Attorney General's office, staying for 11 years. During her time there, she defended the state of Ohio in litigation resulting from the savings-and-loan crisis. Kathleen also has the distinction of arguing a case before the U. S. Supreme Court, successfully maintaining the state's right to conduct an investigation while a case is under consideration by the Federal courts.

After leaving the Attorney General's office, she joined Porter, Wright, Morris & Arthur where she specializes in governmental and regulatory litigation and constitutional law. She represents private parties in disputes with governmental agencies and also serves as special counsel to state and local government agencies. She is President of the Columbus Bar Association, Past President of the Board of Counselors, Capital University School of Law, and Past President of the Equal Justice Foundation, an organization committed to protecting civil liberties.

Kathleen has been inducted into the American College of Trial Lawyers, one of only ten women lawyers in Ohio who have achieved this professional milestone. She was named "Lawyer of the Year 2000" by the *Ohio Lawyers Weekly* and recognized for "Outstanding Pro Bono Service by an Individual" in 2001 by the Columbus Bar Foundation/Columbus Bar Association.

A quiet and effective leader, Kathleen proves you don't have to be loud to be noticed.



# MARCH

SUNDAY	MONDAY	TUESDAY	WEDNESDAY	THURSDAY	FRIDAY	SATURDAY
1	2	3	4	5	6	7
8	9	10	11	12	13	14
15	16	17	18	19	20	21
22	23	24	25	26	27	28
29	30	31				



17 St. Patrick's Day  
 20 First Day of Spring

---



---



---



---



---



---

FEBRUARY

Su	Mo	Tu	We	Th	Fr	Sa
1	2	3	4	5	6	7
8	9	10	11	12	13	14
15	16	17	18	19	20	21
22	23	24	25	26	27	28

APRIL

Su	Mo	Tu	We	Th	Fr	Sa
					1	2
3	4	5	6	7	8	9
10	11	12	13	14	15	16
17	18	19	20	21	22	23
24	25	26	27	28	29	30



## DEBBIE FREECE

*Executive Director, Mid-Ohio District Nurses Association*

Debbie Freece cannot recall a time when she did not want to be a nurse. It makes sense; her aunt and sister are nurses.

Growing up in Grove City, Debbie enjoyed a close relationship with her grandmother. This relationship led her to work in a long-term care facility upon graduation. Within six weeks, she was offered the position of director of nursing. During her time as director, Debbie developed her professional skills, prompting her to obtain a Master's of Science in Nursing. Appreciative of the opportunities she had received, Debbie determined she would devote herself to giving back to the profession.

After giving birth to her son, she decided to work part time and secured a position with the Mid-Ohio District Nurses Association. Founded in 1925, the Mid-Ohio District Nurses Association is an advocacy group for the nursing profession.

Debbie, as Executive Director for the Mid-Ohio District, ensures the 2,500 registered members receive access to education and resources. Her job is to advocate for the profession and to contribute to health care matters today. She takes care of the professional issues of nurses, so they can focus on great patient care.

Her success grows from her life of serving others. In addition to teaching at local universities, she contributes to the community through a wide range of activities including Special Olympics and Meals on Wheels, where one Friday each month she joins her 85-year-old mother in delivering meals.

Debbie enjoys family time and quilting. She's also an ardent Columbus Blue Jackets fan.

Her commitment to others comes through in her monthly gathering with a few close friends for the past 34 years. These friends including the nursing community are her cheerleaders and inspiration. Debbie's devotion to people extends from this base of friends and family to make a difference in the health care received in Central Ohio.

# april

SUNDAY	MONDAY	TUESDAY	WEDNESDAY	THURSDAY	FRIDAY	SATURDAY
			1	2	3	4
5	6	7	8	9	10	11
12	13	14	15	16	17	18
19	20	21	22	23	24	25
26	27	28	29	30		



- 1 April Fool's Day
- 5 Palm Sunday
- 9 First Day of Passover
- 10 Good Friday
- 12 Easter
- 22 Earth Day

---



---



---



---

## MARCH

Su	Mo	Tu	We	Th	Fr	Sa
1	2	3	4	5	6	7
8	9	10	11	12	13	14
15	16	17	18	19	20	21
22	23	24	25	26	27	28
29	30	31				

## MAY

Su	Mo	Tu	We	Th	Fr	Sa
					1	2
3	4	5	6	7	8	9
10	11	12	13	14	15	16
17	18	19	20	21	22	23
24	25	26	27	28	29	30
31						



## JUDY HUANG LEWIS

*President, 889 Global Solutions, Ltd.*

“889” or “ba ba jiu” has tremendous meaning in China like 777 has in a Las Vegas casino. 8’s represent financial prosperity while 9’s represent longevity. Together, it represents prosperity for you, prosperity for the company, and prosperity for eternity.

On her business cards, Judy Huang Lewis has the yin/yang symbol, which represents balance. Put all of that together and you get 889 Global Solutions, a company started in 1999 by Judy to help U.S. manufacturers procure and manufacture products from China.

A Chinese native, she came to the U.S. with her parents at age twelve. After graduating from Boston College with a B.A. in marketing and communications, she returned to China fascinated with the growing opportunities she saw in Asia.

At the encouragement of friends and family, in 1993 Judy started the second licensed real-estate company in Beijing, and her clients were representatives of Fortune 500 companies in China. It was profitable within 90 days of start up and each year she was president until she sold it in 1999. An independent risk-taker, she knows by taking chances you open doors.

Judy returned to the U.S. with her husband, and her clients in China followed. An experienced entrepreneur, Judy was uniquely positioned to bridge the gaps between American and Chinese businesses and knew she could provide opportunity and facilitate commerce on either side of the Pacific.

Faith, friends, and family remain a constant source of support and inspiration for Judy. Appreciative of all that she has, Judy believes in giving back to the community, one person at a time. Fluent in Mandarin and Cantonese, today she teaches English to immigrants at a local church.

For Judy, it’s about balance. She says when you’re out of balance, focus on others and then you can truly appreciate what you’ve been given.

# MAY

SUNDAY	MONDAY	TUESDAY	WEDNESDAY	THURSDAY	FRIDAY	SATURDAY
					1	2
3	4	5	6	7	8	9
10	11	12	13	14	15	16
17	18	19	20	21	22	23
24	25	26	27	28	29	30
						31



10 Mother's Day  
 16 Armed Forces Day  
 25 Memorial Day

---



---



---



---



---

APRIL

Su	Mo	Tu	We	Th	Fr	Sa
		1	2	3	4	
5	6	7	8	9	10	11
12	13	14	15	16	17	18
19	20	21	22	23	24	25
26	27	28	29	30		

JUNE

Su	Mo	Tu	We	Th	Fr	Sa
	1	2	3	4	5	6
7	8	9	10	11	12	13
14	15	16	17	18	19	20
21	22	23	24	25	26	27
28	29	30				



## SHELLEY FISHER

*President, Edge Plastics, Inc., Jobs-on-Site, PPC Great Stuff,  
and Mansfield Industrial Center*

As president of four companies, Shelley Fisher wears many hats. You may find her on the shop floor of her manufacturing company, wearing her hard hat and speaking with more than 200 employees. Or you might also see her speaking with clients such as Family Dollar, Step 2, or Walmart.

Graduating with an MBA from The Ohio State University, Shelley entered retail as a buyer for Lazarus. In the mid-eighties, her parents, owners of Edge Plastics, Inc., a major manufacturing company, asked for her assistance. Shelley took off her retail hat and moved back to Mansfield, where the company is based, to help out. The plan was to stay for only six months.

Plans do change, and Shelley is still at Edge Plastics.

She purchased the business several years ago from her parents and now owns 100% of the stock in several companies: Edge Plastics, Jobs-on-Site, PPC Great Stuff, and Mansfield Industrial Center. That's a lot of hats.

Life in Mansfield has not always been easy for Shelley. Losing her aunt and her father in a plane crash in 2008, her husband through an accident in 2005, and her mother and her grandmother to cancer in 2003, Shelley has seen many dark days. She remains positive in spite of it all.

Shelley had the leadership skills to thrive in the face of adversity; at home, in her office, and on the shop floor, she empowers everyone around her. Her success is a lesson in awareness and accountability for her and her employees.

Shelley is passionate about education, serving at many levels including as the Finance Committee Chair for The Ohio State University Board, Mansfield and her local school board in Ontario. Through continual education, she never lets adversity get in her way. And with her hard hat tightly secured, she's equipped to take on any challenge.

# JUNE

SUNDAY	MONDAY	TUESDAY	WEDNESDAY	THURSDAY	FRIDAY	SATURDAY
	1	2	3	4	5	6
7	8	9	10	11	12	13
14	15	16	17	18	19	20
21	22	23	24	25	26	27
28	29	30	31			



ibelagency

- 14 Flag Day
- 21 First Day of Summer
- 21 Father's Day

---



---



---



---



---



---

MAY							JULY						
Su	Mo	Tu	We	Th	Fr	Sa	Su	Mo	Tu	We	Th	Fr	Sa
					1	2				1	2	3	4
3	4	5	6	7	8	9	5	6	7	8	9	10	11
10	11	12	13	14	15	16	12	13	14	15	16	17	18
17	18	19	20	21	22	23	19	20	21	22	23	24	25
24	25	26	27	28	29	30	26	27	28	29	30	31	
31													



## DR. SANDRA METZLER

*Technical Consultant, SEA*

Dr. Sandra Metzler has always broken barriers. At age 11, she was among the first group of girls permitted to play Little League. She's always enjoyed sports, competition, and discovery.

A natural problem solver, Sandra was always the one to fix the broken toasters and to assemble her brothers' toys. She missed the cue that girls were not supposed to like Math and Science.

Sandra was the first high school student to intern at the Delco Moraine automotive plant in Dayton. She worked in the Engineering Garage taking apart transmissions and engines. She also participated in the first "mini-engineer" summer camp for women held at Purdue University, where she would later earn her degree. She was one of twelve women engineers in a class of 250.

Sandra was the first doctoral level female technical consultant for SEA, a corporate team of engineering and investigative authorities specializing in Fire Investigation, Vehicular Accident Reconstruction and Failure Evaluation. Sandra does "engineering detective work," conducting design and failure analysis of biomedical and mechanical devices and products. Sandra was the first person in the U.S. to apply motion capture technology to forensic analysis. Imagine the TV show *CSI*; that's what she does.

Her recommendation to young women pursuing careers in Math and Science is not to be intimidated, not to back down, and not to be afraid to ask questions.

It's obvious that Sandra is passionate about Science and Physics. She mentors the Grandview Heights Middle School Lego Robotics Team, and works with the Science Olympiad, encouraging them to see the value behind critical thinking. She's also one of the conference chairs for the Society of Automotive Engineering and will attend the Digital Human Modeling Conference in Sweden in 2009.

What new barriers will Sandra break? Only time will tell for this talented woman.



# JULY

SUNDAY	MONDAY	TUESDAY	WEDNESDAY	THURSDAY	FRIDAY	SATURDAY
			1	2	3	4
5	6	7	8	9	10	11
12	13	14	15	16	17	18
19	20	21	22	23	24	25
26	27	28	29	30	31	



4 Independence Day

---



---



---



---



---



---

JUNE							AUGUST						
Su	Mo	Tu	We	Th	Fr	Sa	Su	Mo	Tu	We	Th	Fr	Sa
	1	2	3	4	5	6							1
7	8	9	10	11	12	13	2	3	4	5	6	7	8
14	15	16	17	18	19	20	9	10	11	12	13	14	15
21	22	23	24	25	26	27	16	17	18	19	20	21	22
28	29	30					23	24	25	26	27	28	29
							30	31					



## elizabeth LESSNER

CEO, The Betty's Family of Restaurants

Elizabeth Lessner is working to make Columbus a better place to live, work, and play.

Elizabeth is wise beyond her years. As CEO of The Betty's Family of Restaurants, she has created Betty's Food and Spirits, Surly Girl, Tip Top, and the up-and-coming Dirty Frank's Hot Dogs; all restaurants located in downtown Columbus or the Short North.

Elizabeth, born and raised in Chicago, had to taste for herself what the world had to offer. At 18, she moved out West for four years and worked in restaurants and coffee shops throughout Seattle and California.

Elizabeth moved to Columbus to be near her family. Elizabeth wanted to develop a neighborhood restaurant, similar to what she had seen on the West Coast, where women would feel welcome and comfortable. This was a niche left unfilled by male-oriented sports bars. She chose a retro theme from the 1940s, offering warm lighting, comfortable seating, and an inviting atmosphere. Opening to standing room only in 2001, Elizabeth said, "Betty's was more fun than I thought I would ever have."

Public service is a commitment for Elizabeth. All of her managers are required, as part of their jobs, to be involved in community organizations. Elizabeth coordinates other Short North business leaders in addressing a variety of causes: fund-raising efforts, voter registration, and more. In fact, she says, philanthropy is what makes her feel good.

She is President/Chair of Green Efforts of the Central Ohio Restaurant Association, is on Mayor Coleman's Young Professionals Commission, is a board member for the Central Ohio Workforce Investment Corp, is a COTA Mobility Advisory board member, is a past YWCA mentor, and is an avid women's health activist.

To Elizabeth, Columbus is one big neighborhood. She continues to make plans to cook up new ways to make it even better.

# *august*

SUNDAY	MONDAY	TUESDAY	WEDNESDAY	THURSDAY	FRIDAY	SATURDAY
						1
2	3	4	5	6	7	8
9	10	11	12	13	14	15
16	17	18	19	20	21	22
23	24	25	26	27	28	29
30	31					



26 Women's Equality Day

---



---



---



---



---



---

JULY							SEPTEMBER							
Su	Mo	Tu	We	Th	Fr	Sa	Su	Mo	Tu	We	Th	Fr	Sa	
			1	2	3	4				1	2	3	4	5
5	6	7	8	9	10	11	6	7	8	9	10	11	12	
12	13	14	15	16	17	18	13	14	15	16	17	18	19	
19	20	21	22	23	24	25	20	21	22	23	24	25	26	
26	27	28	29	30	31		27	28	29	30				



## CINDY SHEETS

*Senior Vice President Ambulatory Services & Chief Information Officer, Mount Carmel Health System*

At only seven years of age, Cindy was already headed into a career in health care. She would take her brother's drawing board, turn it into a switchboard and would "page" patients in her pretend hospital.

Today, Cindy is responsible for 1,500 employees; representing diverse areas ranging from hospice and occupational health to medical transportation and outpatient centers, just to list a few. Serving Mount Carmel since 1989, she is also the Program Chair for Franklin University's Health Care Information Systems undergraduate major and serves on various boards.

Under Cindy's leadership, Ambulatory Services delivers a consistent and responsive patient experience with a strong focus on communications and on service excellence. Cindy is always mindful that the service rendered by Mount Carmel touches people at the most vulnerable times of their lives.

The seventh of eight children, Cindy was inspired by her parents to believe she could accomplish anything through hard work. Her father, a World War II veteran, taught her patience and perspective. Unless they're shooting at you, he explained, don't panic. She was taught "age is only a state of mind" by her mother, who at 62, went on to get her bachelor's degree in nursing. The example of accomplishment set by her parents has served Cindy well. "The hardest part in any decision," she says, "is your trust in your own ability to make the best decision."

Cindy has managed to find time for life outside of the corporate world. In addition to her career at Mount Carmel, she enjoys camping, gardening, and cooking. Cindy remains tightly connected with her family and with her church.

The legacy of diligence, faith, and leadership given by her parents continues to inspire Cindy to serve all the Central Ohio community through her work at Mount Carmel.

# SEPTEMBER

SUNDAY	MONDAY	TUESDAY	WEDNESDAY	THURSDAY	FRIDAY	SATURDAY
		1	2	3	4	5
6	7	8	9	10	11	12
13	14	15	16	17	18	19
20	21	22	23	24	25	26
27	28	29	30			



- 7 Labor Day
- 13 Grandparent's Day
- 18 Rosh Hashana Begins
- 22 First Day of Autumn
- 27 Yom Kippur Begins

---



---



---



---



---



---

## AUGUST

Su	Mo	Tu	We	Th	Fr	Sa
					1	
2	3	4	5	6	7	8
9	10	11	12	13	14	15
16	17	18	19	20	21	22
23	24	25	26	27	28	29
30	31					

## OCTOBER

Su	Mo	Tu	We	Th	Fr	Sa
					1	2
3	4	5	6	7	8	9
10	11	12	13	14	15	16
17	18	19	20	21	22	23
24	25	26	27	28	29	30
31						



## MEERA PARTHASARATHY

*Principal, Spatial Synergy Studio*

Hampi, India, is more than 100 miles wide and spread over ancient ruins; its homes are over 300 years old. At Hampi, Meera Parthasarathy was among the things she loves most: history and design.

Working alongside architects from the Smithsonian Institute, Meera studied history, architecture, and the culture of the people who lived in India; some of whom were descendants of former kings. It was during this time, Meera realized she was meant to embrace the lessons of history in the practice of design.

Born in Bangalore, India, she often doodled as a child. In India, the educational system emphasized medicine and engineering. Following the advice of a middle school guidance counselor Meera broke the mold and decided to pursue an architecture program.

Her husband's residency brought the couple to New York City, and Meera became the first family member to live in the U.S. In New York, she pioneered converting old warehouses into apartments and lofts. Selling for \$300,000 in 1996, today these same lofts are sold for as much as \$2 million per unit.

Moving to Columbus, she became interested in "green" design.

She thought of her time spent in Hampi and started envisioning how she could blend modern architecture to create high performance, green buildings. She started Spatial Synergy Studio, as well as the nonprofit organization, Central Ohio Green Building Forum. Meera seeks to build for today, so homes and businesses last and conserve energy and resources for the future. She co-chairs Mayor Coleman's Get Green Columbus initiative and every year attracts over 700 people to the Green Building Expo.

Taking the lessons she learned at Hampi, Meera's dream is to hand down an architectural legacy to future generations: building today to sustain tomorrow.

# OCTOBER

SUNDAY	MONDAY	TUESDAY	WEDNESDAY	THURSDAY	FRIDAY	SATURDAY
				1	2	3
4	5	6	7	8	9	10
11	12	13	14	15	16	17
18	19	20	21	22	23	24
25	26	27	28	29	30	31



S4 Consulting



12 Columbus Day  
31 Halloween

---



---



---



---



---



---

## SEPTEMBER

Su	Mo	Tu	We	Th	Fr	Sa
	1	2	3	4	5	
6	7	8	9	10	11	12
13	14	15	16	17	18	19
20	21	22	23	24	25	26
27	28	29	30			

## NOVEMBER

Su	Mo	Tu	We	Th	Fr	Sa
1	2	3	4	5	6	7
8	9	10	11	12	13	14
15	16	17	18	19	20	21
22	23	24	25	26	27	28
29	30					



## DR. REBECCA JACKSON

*Associate Dean for Clinical Research  
Director, Center for Clinical and Translational Science  
The Ohio State University Medical Center*

The lessons of creative thinking and the value of knowledge instilled by her mother propelled Dr. Rebecca Jackson into an early and avid interest in science. As a seven-year-old, she had her first dissecting kit and in junior high school her science project won Superior at the state level. By age 14, Rebecca was studying thyroid disease in mice. At age 22, after graduating from The Ohio State University College of Medicine, her residency took her to Johns Hopkins University in Maryland where her life changed. An accident left her confined to a wheelchair.

Determined and optimistic, Rebecca kept working through her residency and saw patients while in recovery. She later returned to Ohio State, where her life changed again. In a casual conversation with an administrator from the Medical Center, she shared some advances in osteoporosis research. He, in turn, asked her to spearhead a major initiative in this area.

Her ground-breaking research in the treatment of osteoporosis has made Rebecca a major figure in American medicine.

Rebecca is Vice-Chair of the Women's Health Initiative, a landmark study evaluating the risks and benefits of interventions designed for women after menopause. She led a research effort to examine the effect of resistance training on post-menopausal women with osteoporosis. Rebecca's commitment to women's health has also led to important research in Calcium plus Vitamin D supplementation in treating bone loss and in the use of NSAIDs to reduce the risk of breast cancer. She also serves as Interim Director of the OSU Center for Women's Health.

Life has brought many changes for Rebecca, and she has always been up to the task. "Sometimes things present themselves when you least expect them," she says. "The pathway is not always straight - it forces you to stretch beyond what you think you're capable of."



# NOVEMBER

SUNDAY	MONDAY	TUESDAY	WEDNESDAY	THURSDAY	FRIDAY	SATURDAY
1	2	3	4	5	6	7
8	9	10	11	12	13	14
15	16	17	18	19	20	21
22	23	24	25	26	27	28
29	30	31				

Scott Cunningham



**Sterling Commerce**  
An AT&T Company

- 3 Election Day
- 11 Veteran's Day
- 26 Thanksgiving Day

---



---



---



---



---

OCTOBER

Su	Mo	Tu	We	Th	Fr	Sa
			1	2	3	
4	5	6	7	8	9	10
11	12	13	14	15	16	17
18	19	20	21	22	23	34
25	26	27	28	29	30	31

DECEMBER

Su	Mo	Tu	We	Th	Fr	Sa
			1	2	3	4
5	6	7	8	9	10	11
12	13	14	15	16	17	18
19	20	21	22	23	24	25
26	27	28	29	30	31	



## KRISTIN DACH

*Chief Financial Officer and Chief Operating Officer, 2Checkout.com*

It's not every day you find your destiny playing online euchre. For Kristin Dach, the cards were stacked in her favor when she met her future boss in an online tournament. He asked Kristin if she would be interested in helping manage a rapidly growing start-up business in Columbus.

Starting in 2000 with three employees and a \$20,000 investment, 2Checkout.com now has 100 employees and over \$200 million in sales. Recognized by both *Inc.* magazine and *Entrepreneur* magazine as one of the fastest growing companies in the U.S., 2Checkout.com helps businesses sell online in multiple currencies at minimal cost around the globe.

With limited resources, she was challenged with overseeing every aspect of the business, including financials, sales, and personnel. She had to make a choice: either stay, face the fire, and become the leader this company needed, or just give up. Most would have chosen to give up, but Kristin played the right hand and chose to stay.

It's her job to understand the way clients conduct their business throughout the world, connecting them to opportunity.

Kristin also makes it her job to listen to, learn about, and understand her employees. She has developed a R.A.P. program: Review, Analyze, and Plan. She encourages all levels of staff to learn how they personally contribute to the overall mission of the company.

"Settling" is not an option for Kristin. She believes strongly in remaining passionate about her role in the world and encourages others to do the same. Her goal is to leave a legacy of integrity and to always entertain life's daily challenges—just a few lessons taught to her by her parents.

After all, as a card player, Kristin knows when to hold and when to fold and has made plans to keep her hand at the table for a long time.

# December

SUNDAY	MONDAY	TUESDAY	WEDNESDAY	THURSDAY	FRIDAY	SATURDAY
		1	2	3	4	5
6	7	8	9	10	11	12
13	14	15	16	17	18	19
20	21	22	23	24	25	26
27	28	29	30	31		



WOMEN FOR  
ECONOMIC AND  
LEADERSHIP  
DEVELOPMENT

- 11 Hanukkah Begins
- 21 First Day of Winter
- 24 Christmas Eve
- 25 Christmas Day
- 26 Kwanzaa
- 31 New Year's Eve

---



---



---



---



---

## NOVEMBER

Su	Mo	Tu	We	Th	Fr	Sa
1	2	3	4	5	6	7
8	9	10	11	12	13	14
15	16	17	18	19	20	21
22	23	24	25	26	27	28
29	30					

## JANUARY 2010

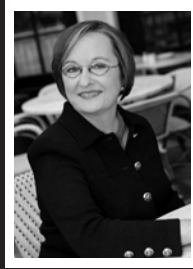
Su	Mo	Tu	We	Th	Fr	Sa
					1	2
3	4	5	6	7	8	9
10	11	12	13	14	15	16
17	18	19	20	21	22	23
24	25	26	27	28	29	30
						31

# Celebrating 5 years of Advancing Women Leaders!

2005 CALENDAR



CHERYL HERBERT



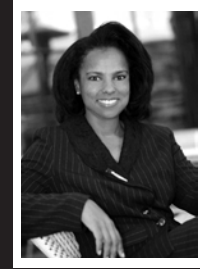
ELEANOR BLOXHAM



FRANKIE NOWLIN



LISA DOLIN



WANDA CORNER



VICKY NOSBISCH



RHONDA FRAAS



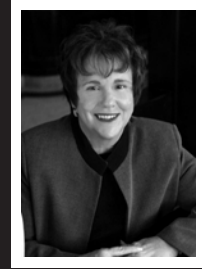
JULIE KUNKEL



DEBORAH BALLAM



WENDY GOLDSTEIN



SALLIE SHERMAN

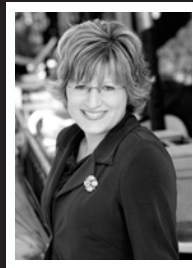


LISA DELP

2006 CALENDAR



BARBI TUCKERMAN



SUSAN MCMANUS



DIANE WARREN



SUSAN TOMASKY



KAM SIGAFOOS



JANE GROTE-ABELL



KATHY FRANK



FARAH MAJIDZADEH



ANDREA PRUNEAU



CONNIE BROWNING



TANYA FRATTO



JACKIE WILLIAMS

2007 CALENDAR



SHERI TACKETT



DEBRA PLOUSHA  
MOORE



RHONDA DEMUTH



LYNN ASENSIO



KATHY FOX



JANIS MITCHELL

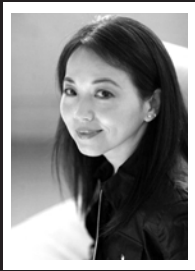


RHONDA JOHNSON

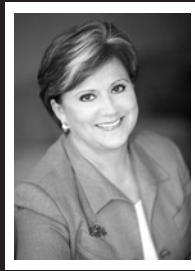


KATHY ESHELMAN

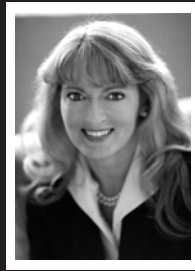
# Celebrating 5 years of Advancing Women Leaders!



APRIL YANG



JODY DAVIDS



KAREN BUCHWALD  
WRIGHT



NEELI BENDAPUDI



DONNA ANGIULO

2008 CALENDAR



IRIS COOPER



THUY BOWYER



CAROL CLARK



TERESA LONG



JODI AUFDENCAMP



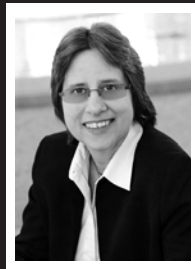
TARA ABRAHAM



ISABEL TOTH



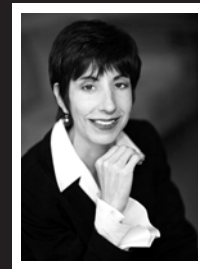
SHIRLEY ROGERS-REECE



JEAN SCHELHORN



MARCY RAYMOND



BARBARA KUNZ

We want to gratefully acknowledge the following sponsors for their support of the 2009 WELD 12 Women You Should Know calendar:

Acloche' LLC  
American Electric Power  
Amerprise Financial Services, Inc.  
Benesch  
Bricker & Eckler LLP  
Campbell, Hornbeck, Chilcoat & Veatch LLC  
Carlile Patchen & Murphy LLP  
Cohen & Company  
Delta Energy, LLC  
Ernst & Young  
Fifth Third Bank  
GTN  
Huntington National Bank  
McDonald Hopkins LLC  
M.T. Wellness Clinic & Training Center  
National City Bank  
Nationwide  
The Ohio State University Medical Center  
PatrioticJewelry.com  
Robert Half  
S4 Consulting  
Schneider Downs & Co., Inc.  
Sterling Commerce, Inc.  
Val Moeller

#### CREDITS:

Project Committee  
Peggy Tidwell, Chair      Kim Phillips  
Susan Alexander      Cindi Marshall  
Beth Casebolt      Kassie Steegman

Photographer  
Scott Cunningham, Scott Cunningham Photography  
Master Digital Printer & Assistant: Kate Morgan

Graphic Designer  
Heather Kimura, Ibel Agency

Makeup Artist  
Lori Cheyne

Photo Shoot Location  
Bon Vie, Easton

Printer  
Century Graphics

Reception Location  
Porter, Wright, Morris & Arthur LLP



**WOMEN FOR  
ECONOMIC AND  
LEADERSHIP  
DEVELOPMENT**



CANDICE BARNHARDT



SHARON FRANCIS



KATHLEEN TRAFFORD



DEBBIE FREECE



JUDY HUANG LEWIS



SHELLEY FISHER



DR. SANDRA METZLER



ELIZABETH LESSNER



CINDY SHEETS



MEERA PARTHASARATHY



DR. REBECCA JACKSON



KRISTIN DACH



WOMEN FOR  
ECONOMIC AND  
LEADERSHIP  
DEVELOPMENT

[www.weldoh.org](http://www.weldoh.org)

