

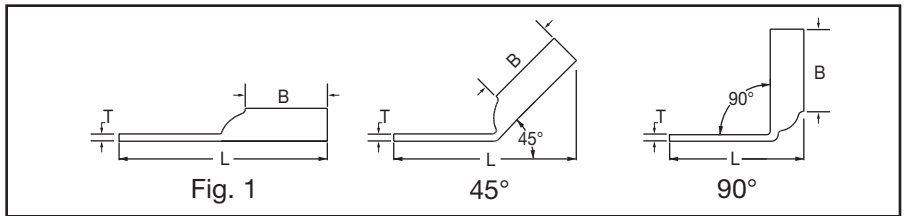
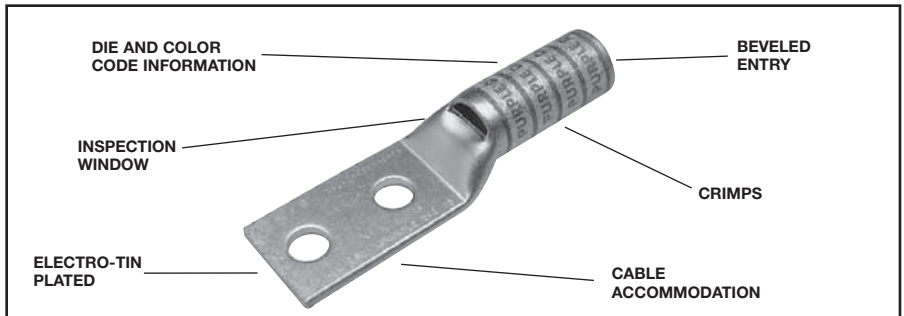
**TWO HOLE HYLUG™
FLEX CONDUCTOR
LONG BARREL WITH
INSPECTION WINDOW**

TYPE YAZ-FX

**COPPER COMPRESSION
TERMINAL**

UL Listed 90° C,
600 Volts to 35 kV ◆

45° and 90° angles are available.
Please contact Customer Service to order:
1-800-346-4175



Catalog Number	Fig #	Conductor		Stud Hole Size	Stud Hole Spacing	Tongue Width	Figure Dimensions			Dieless (# of crimps)	▲ Installation Tooling				Wire Strip Length		
		AWG	*** MM²				(B)	(T)	(L)		Mechanical		Hydraulic			Color Code	Die Index
											MD6, OUR840, MD7-34R	BCT500HS, Y500CTHS	Y35, Y39, Y750, Y46*, PAT750				
YAZ8C2TC10FX	1	37/24 #8 Weld #3 AWG	10	# 10	5/8"	.41"	.75"	.08"	2.20"	Y8MRB-1 (1)	W8CVT (2) W8CRT (2) X8CRT (2)	W8CVT (2) W8CRT (2) X8CRT (2)	U8CRT (2)	Red	49	1"	
YAZ8C2TC10E2FX	1			# 10	3/4"	.41"	.75"	.08"	2.33"	MY29-11 (2)							
YAZ8C2TC14E1FX	1			1/4"	1"	.44"	.75"	.08"	2.70"	Y1MRTC (2)							
YAZ8C2TC14FX	1			1/4"	5/8"	.44"	.75"	.08"	2.32"	Y81KFT (1)							
YAZ8C2TC14E2FX	1			1/4"	3/4"	.44"	.75"	.08"	2.45"	Y81KFTMBH (1)							
YAZ8C2TC38FX	1			3/8"	1"	.58"	.75"	.06"	2.89"	PAT81KFT-18V (1)							
YAZV6C2TC10E2FX	1	61/24 #6 Weld #6 AWG	16	# 10	3/4"	.48"	.75"	.08"	2.64"	MY29-11 (2)	W5CVT (2) W5CRT (2) X5CRT (2)	W5CVT (2) W5CRT (2) X5CRT (2)	U5CRT (2)	Blue	7	1-3/16"	
YAZV6C2TC14FX	1			1/4"	5/8"	.48"	.75"	.08"	2.65"	Y644HS (1)							
YAZV6C2TC14E2FX	1			1/4"	3/4"	.48"	.75"	.08"	2.78"	Y1MRTC (2)							
YAZV6C2TC14E1FX	1			1/4"	1"	.48"	.75"	.08"	3.03"	Y81KFT (1)							
YAZV6C2TC38FX	1			3/8"	1"	.58"	.75"	.06"	3.22"	Y81KFTMBH (1)							
YAZV6C2TC38E2FX	1			3/8"	3/4"	.58"	.75"	.06"	2.97"	PAT81KFT-18V (1)							
YAZV6C2TC38E6FX	1	3/8"	7/8"	.58"	.75"	.06"	3.09"										
YAZV4C2TC38E2-FX	1	91/24-105/24 #4 Weld #4 AWG	—	3/8"	3/4"	.58"	1.25"	.08"	3.14"	Y1MRTC (4)	W4CVT (2) W4CRT (2) X4CRT (2)	W4CVT (2) W4CRT (2) X4CRT (2)	U4CRT (2)	Gray	8	1-5/16"	
YAZV4C2TC38FX	1			3/8"	1"	.58"	1.25"	.08"	3.39"	MY29-11 (2)							
YYAZV4C2TC14FX	1			1/4"	5/8"	.55"	1.25"	.09"	2.83"	Y644HS (1)							
YAZV4C2TC14E2FX	1			1/4"	3/4"	.55"	1.25"	.09"	2.95"	Y81KFTMBH (1)							
YAZV2C2TC14FX	1	125/24-150/24 #2 Weld #2 AWG	35	1/4"	5/8"	.68"	1.38"	.10"	3.01"	Y1MRTC (4)	W2CVT (2) W2CRT (2) X2CRT (2)	W2CVT (2) W2CRT (2) X2CRT (2)	U2CRT (2)	Brown	10	1-7/16"	
YAZV2C2TC14E2FX	1			1/4"	3/4"	.68"	1.38"	.10"	3.13"	MY29-11 (4)							
YAZV2C2TC38FX	1			3/8"	1"	.68"	1.38"	.10"	3.57"	Y644HS (1)							
YAZV2C2NTCFX	1			1/2"	1-3/4"	.83"	1.38"	.10"	4.76"	Y81KFT (1)							
YAZV2C2TC14E1FX	1			1/4"	5/8"	.75"	1.38"	.12"	3.41"	Y81KFTMBH (1)							
YAZV1C2TC14E1FX	1	175/24-225/24 #1 Weld #1 AWG	—	1/4"	1"	.75"	1.38"	.12"	3.41"	MY29-11 (2)	W1CVT (2) W1CRT-1 (2) X1CRT-1 (2)	W1CVT (2) W1CRT-1 (2) X1CRT-1 (2)	U1CRT-1 (2)	Green	11	1-7/16"	
YAZV1C2TC14E2FX	1			1/4"	3/4"	.75"	1.38"	.12"	3.16"	Y644HS (1)							
YAZV1C2TC38FX	1			3/8"	1"	.75"	1.38"	.12"	3.60"	Y81KFT (2)							
YAZV1C2TC516E6FX	1			5/16"	7/8"	.75"	1.38"	.12"	3.35"	Y81KFTMBH (2)							
YAZV1C2TC516FX	1			5/16"	1"	.75"	1.38"	.12"	3.47"	PAT81KFT-18V (2)							

* Use PUADP-1 adaptor with "U" -dies in Y46 HYPRESS™.
 ** The MM² conductor size referenced here is for both Class 2 and Class 5 conductor.
 ***The MM² conductor size listed are the recommendations for Class 5 conductor.

▲ See tooling section of this catalog for complete tool and die listings. Use ONLY color-coded die recommendations for "-FX" connectors. For nest/indenter system contact factory.

◆ For applications greater than 2000 Volts consult cable manufacturer for voltage stress relief instructions.
 Note: All dimensions shown are for reference only.

Throughout the catalog you will notice blue highlighted items. These are the most frequently ordered BURNDY® Products.