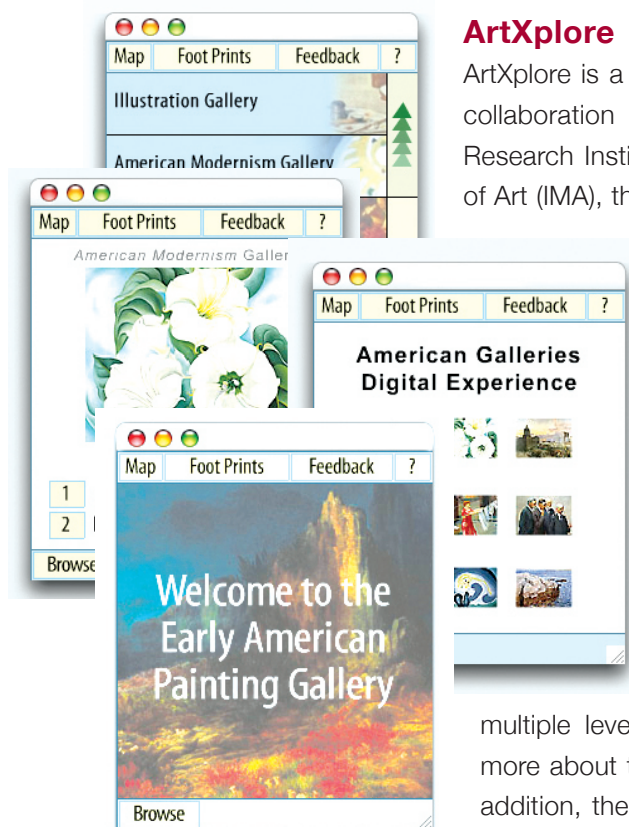


## Susan Tennant

Clinical Assistant Professor, Indiana University School of Informatics  
 Director, CLIOH (Cultural Digital Library Indexing Our Heritage) Project  
 Principal Investigator



## ArtXplore

ArtXplore is a pilot program developed through a collaboration of Indiana University's Informatics Research Institute (IRI), the Indianapolis Museum of Art (IMA), the Herron School of Art and Design, and Purdue's School of Science at IUPUI. Deployed on a PDA (hand-held device), ArtXplore enhances a patron's museum visit with visual- and audio-enriched, multimedia content. The user-friendly interface highlights information on 16 objects selected from the IMA's American Galleries. A wireless delivery system provides the patron access to

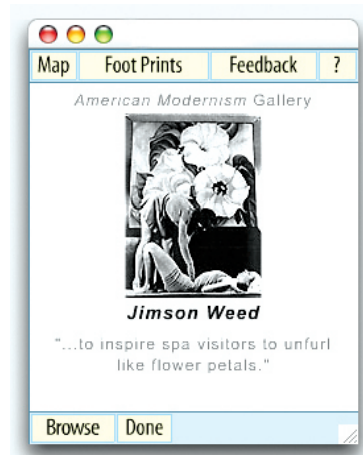
multiple levels of content from which to learn more about the featured art in this collection. In addition, the visitor will be able to review his or her experience and convey comments to the

curator from the PDA. The IRI and the IMA will collect data about the visitor's choices with which to improve and enhance future museum exhibits.

Presently, both the Smithsonian Institution and Chicago's Field Museum are developing similar systems; however, ArtXplore is the first of its type in the United States. This is a milestone not only for promoting cultural heritage in Indiana, but also for the Informatics Research Institute at IUPUI in its efforts to foster collaborations with community partners and University departments.

## Content and Technology

ArtXplore is unique in that it provides visitors with enhanced audio and visual (graphics, animations, video, panoramas) content tailored to the IMA's American Galleries. Sixteen art objects in twelve galleries are highlighted. Each art object has multiple layers of information to enhance the visitor's experience. The program design starts with a visitor logging into the system; this identifies the person with the PDA. After login, the visitor is given a unique session identification, noting the start



and end of a person's museum visit and associating the individual with the PDA he or she is carrying. The wireless tracking system not only provides information to the patron, but also collects data and generates reports for both the IMA and IRI to use. The reports contain data such as: how long a person spends looking at the art objects; what objects are the most popular; what time of day is most popular; gallery traffic patterns; gender differences in art interest, and other useful information.

## ArtXplore Development Team

### Content Providers

Harriet Warkel, Curator, IMA American Galleries, Linda Duke, IMA Director of Education, and IMA staffers, Lara Young and Daniel Incandela, worked with Dr. Jean Robertson, Professor of Art History, Herron School of Art and Design, to develop engaging, informative content about the featured art objects. In addition, students from the Herron School of Art and Design, the Indiana University School of Informatics at IUPUI, and the Purdue School of Science at IUPUI developed aspects of the program.

### Program Developers

Researchers from the Informatics Research Institute designed the wireless system, developed multimedia content and interactive programming, and assisted in the content development.

### Student Involvement

Students of both Professor Susan Tennant and Dr. Jean Robertson assisted in developing aspects of the program. Tennant's students researched and compared a variety of museums using similar technologies; Robertson's student, Joseph Christopher Rulli, researched content.

*Principal Investigator:* Susan Tennant

*Co-Investigators:* Dr. Mathew Palakal and Mary Pietrowicz

*Project Managers:* Barbara Hayes and Robert S. Comer

*Content Developer:* Dr. Jean Robertson

*Flash Developer:* Mohamed Hamdouchi

*Interface Developers:* Jolene Kernick and Devi Haripal

*Database Coordinator:* Xiao Qiu Bao

*Audio Engineer:* Ricardo Laranja

*Narrators:* Joy William and Jeffrey Hostetler

*Interface Developer:* Shielly Hartanto

*System Designers:* Stephen Senesac and Meagan Gleber

*Technical Support:* Scott Orr

*Consultants:* Dr. Jack Pincus, Kurt Waldhuetter, and Steve Spicklemire