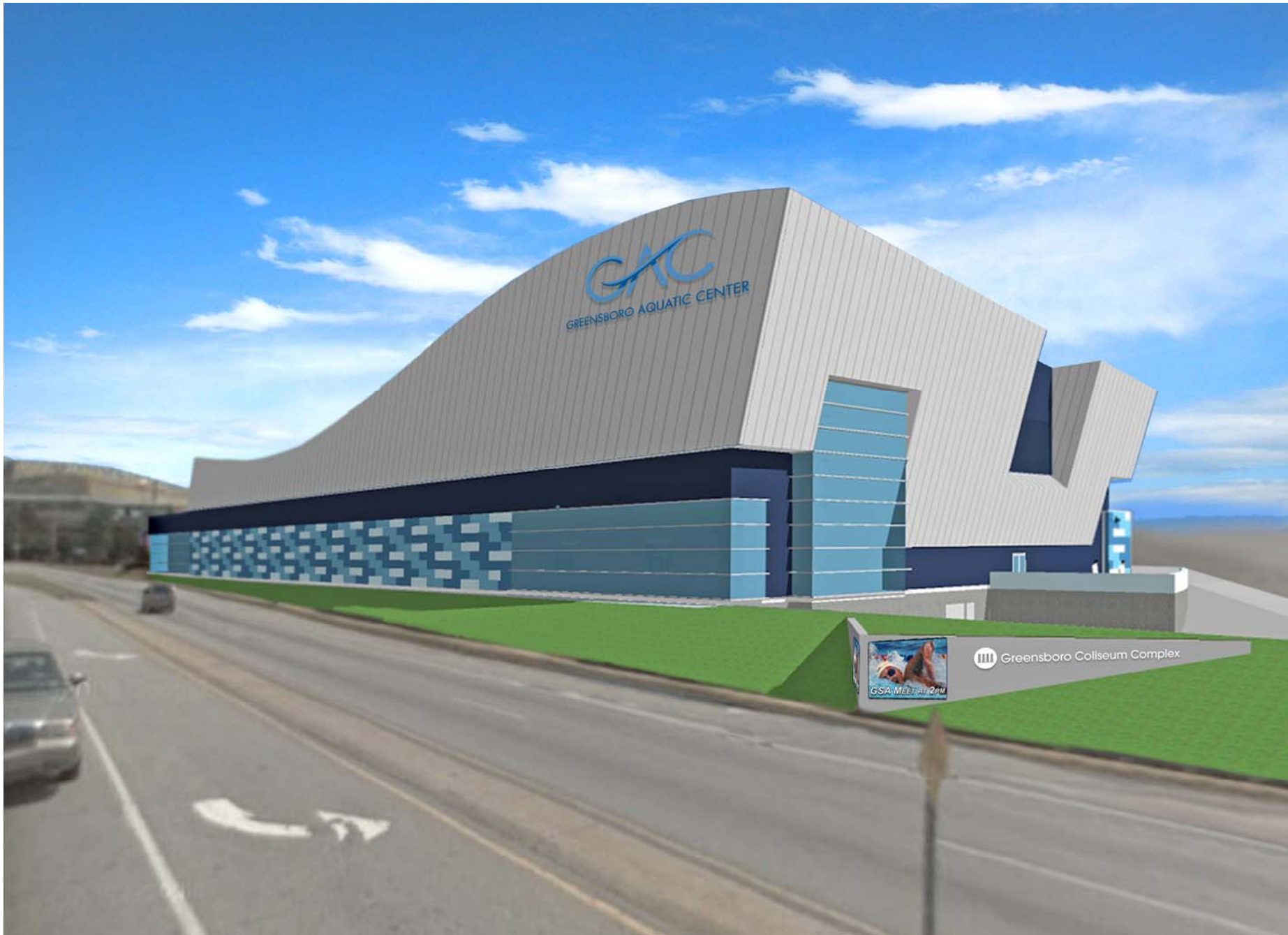


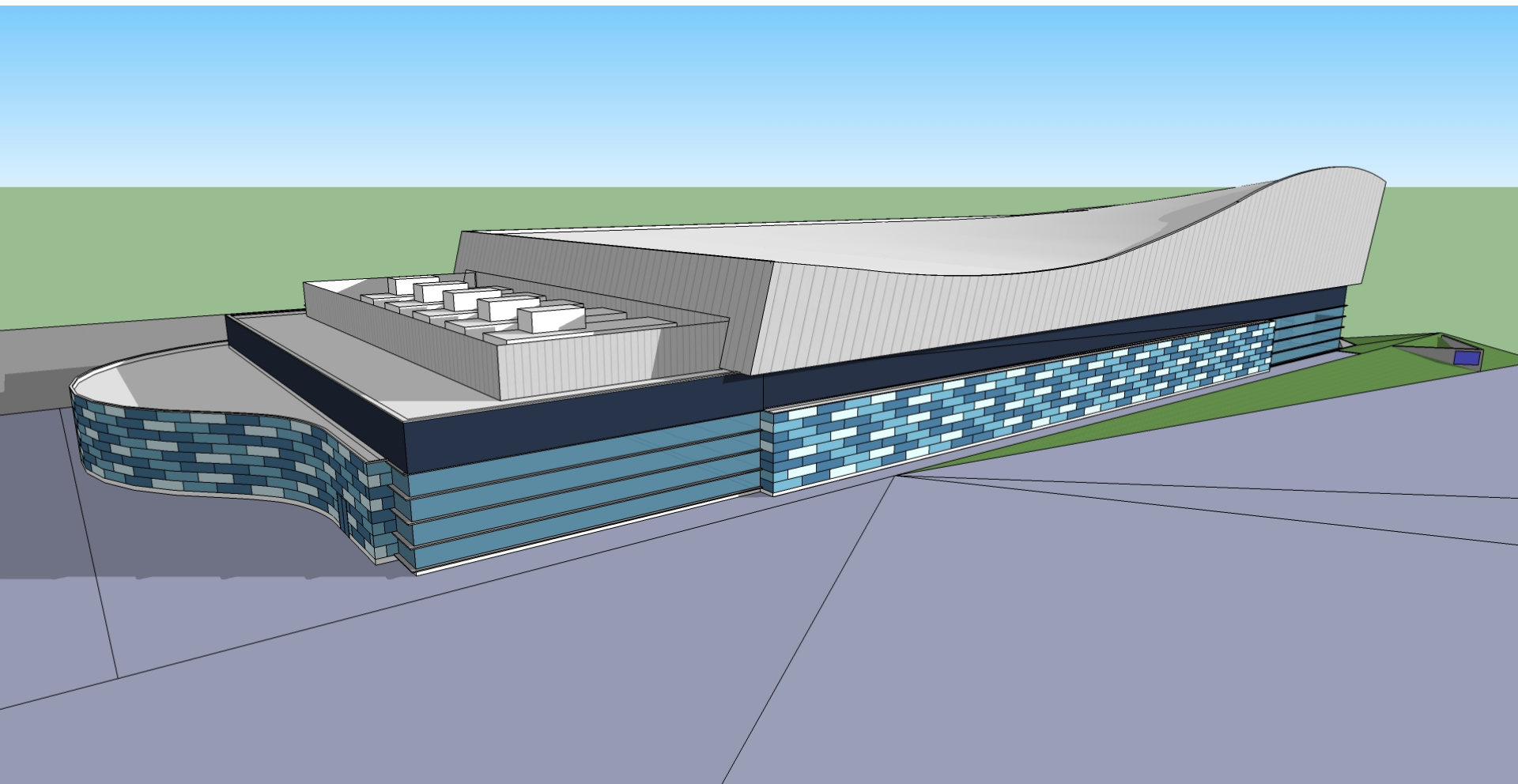


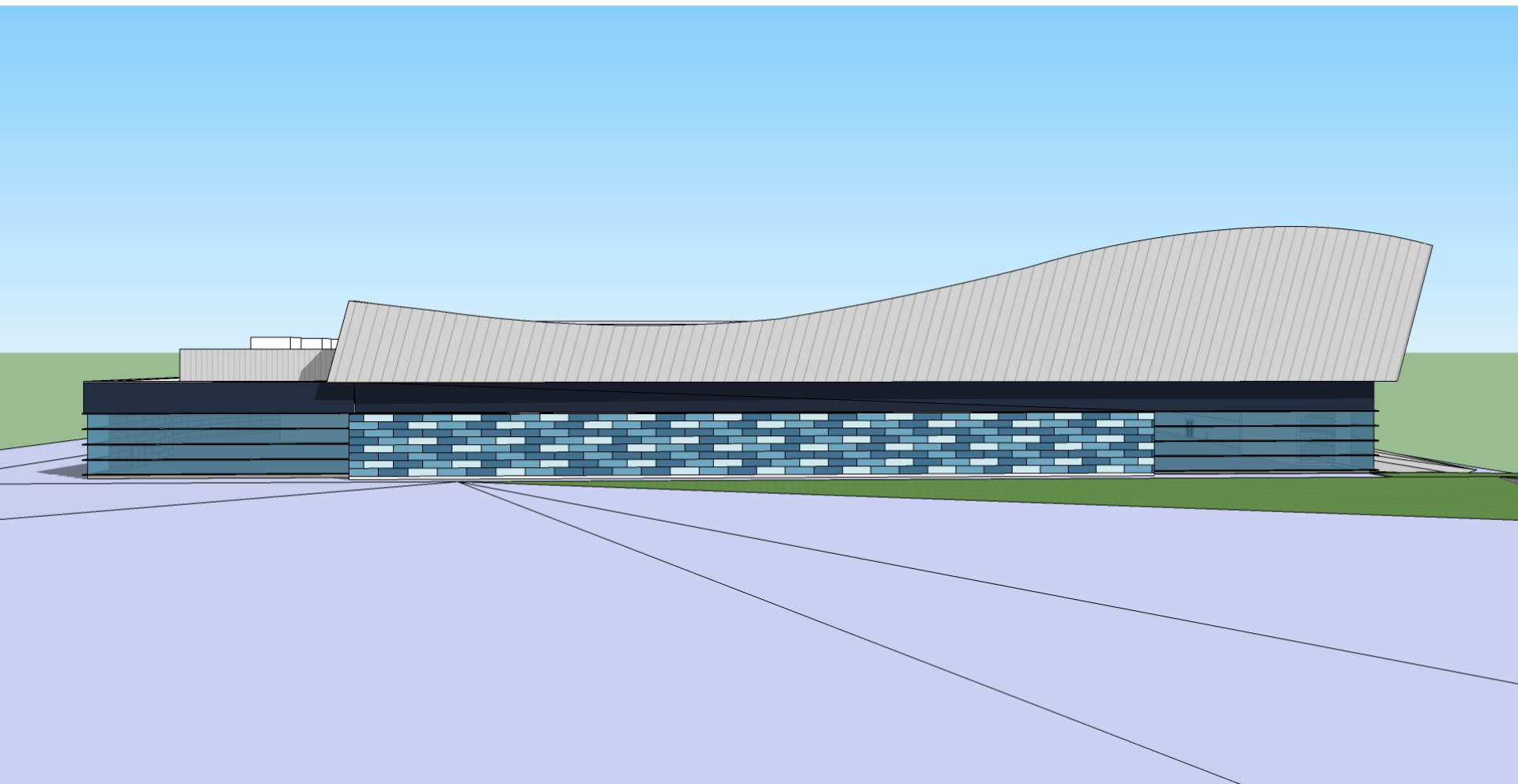
GREENSBORO AQUATIC CENTER

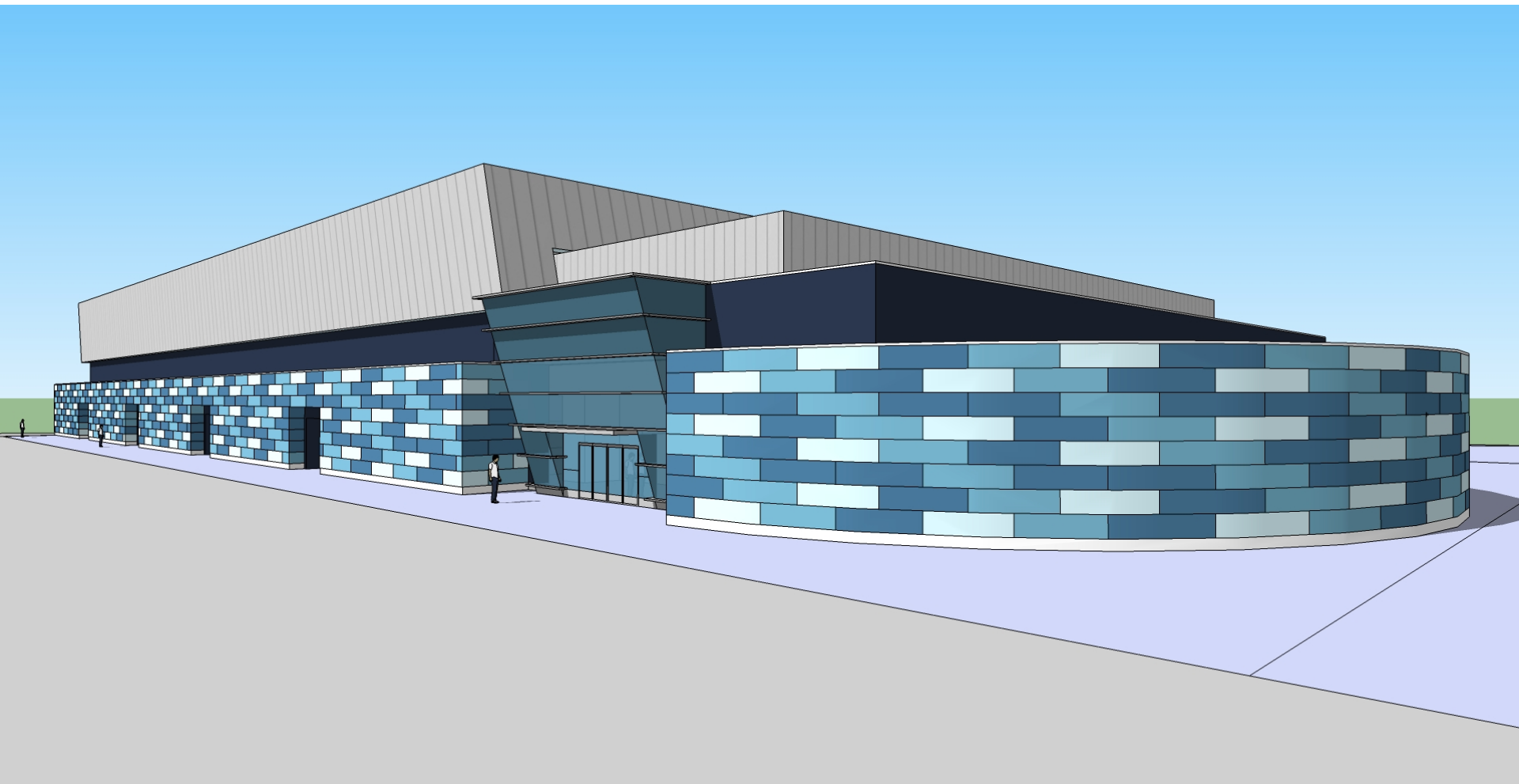


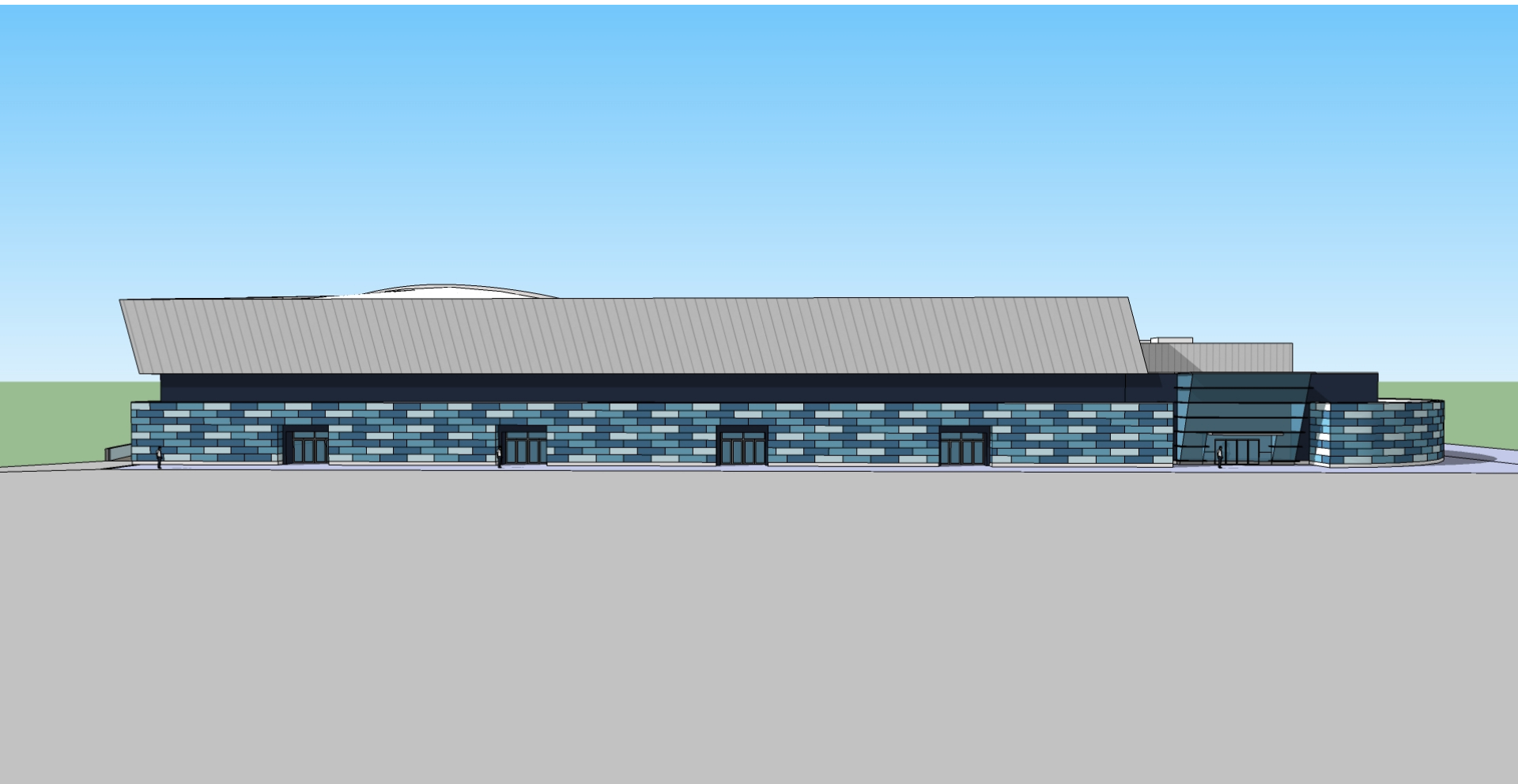
SITE PLAN
SCALE: 1" = 200'

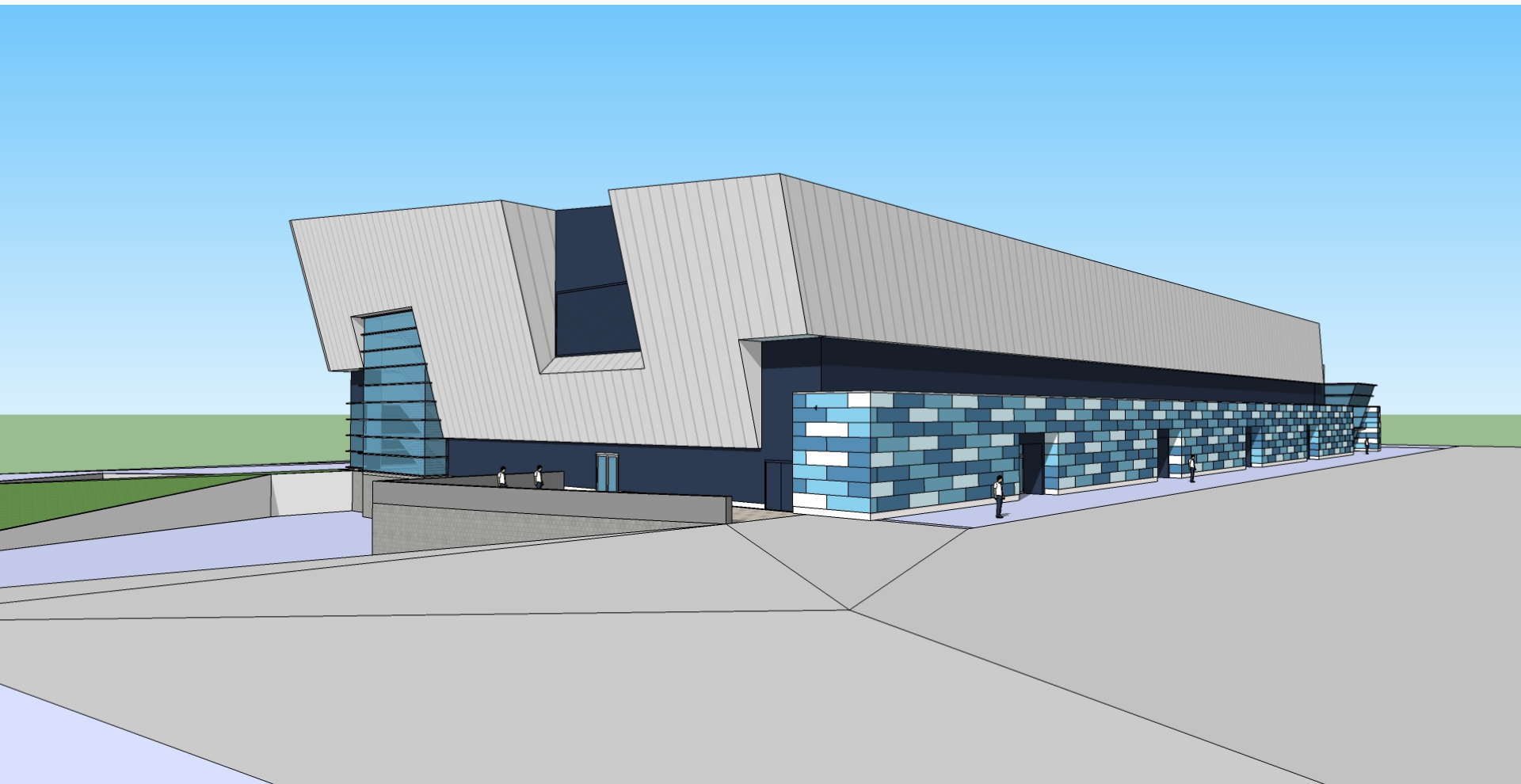


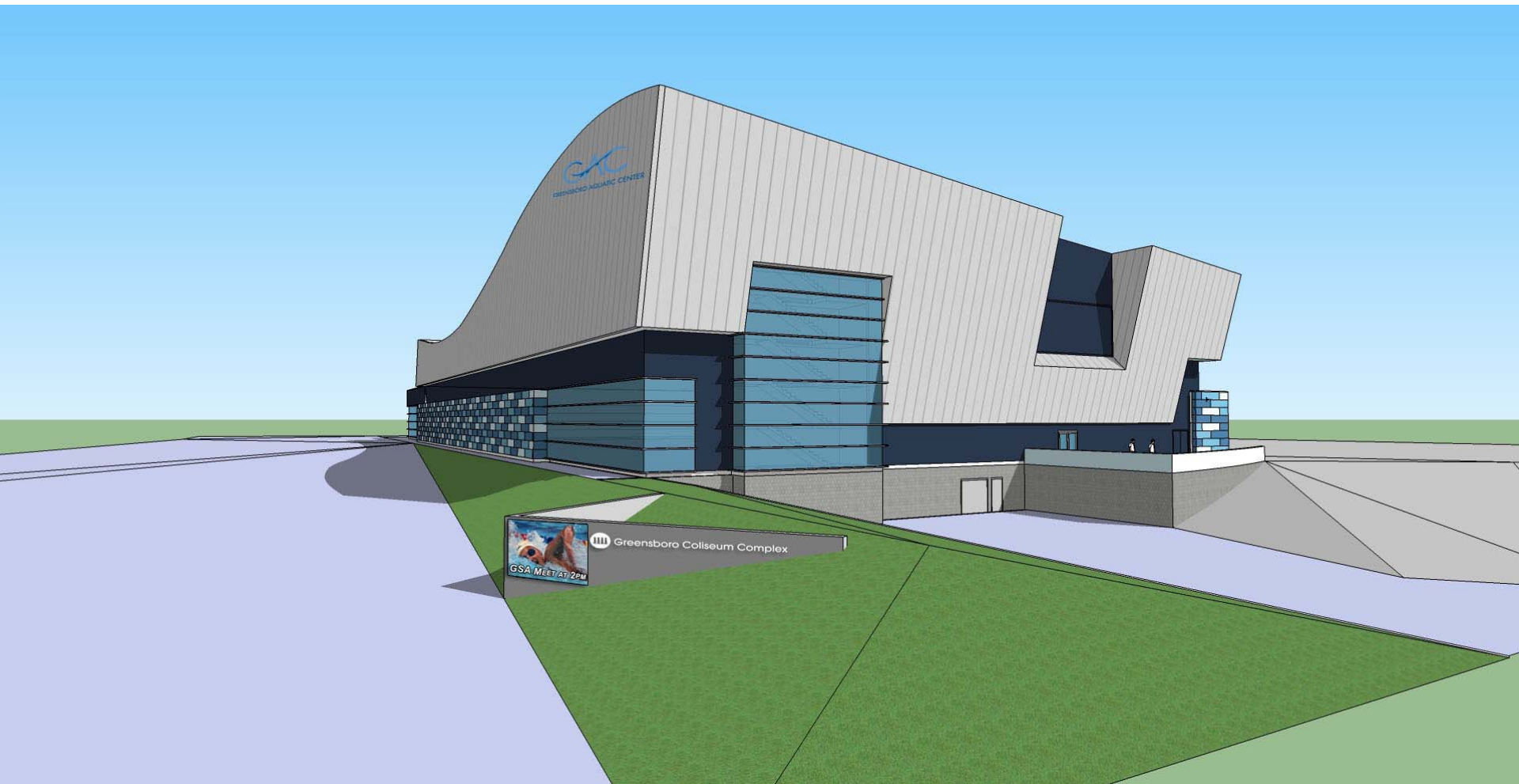








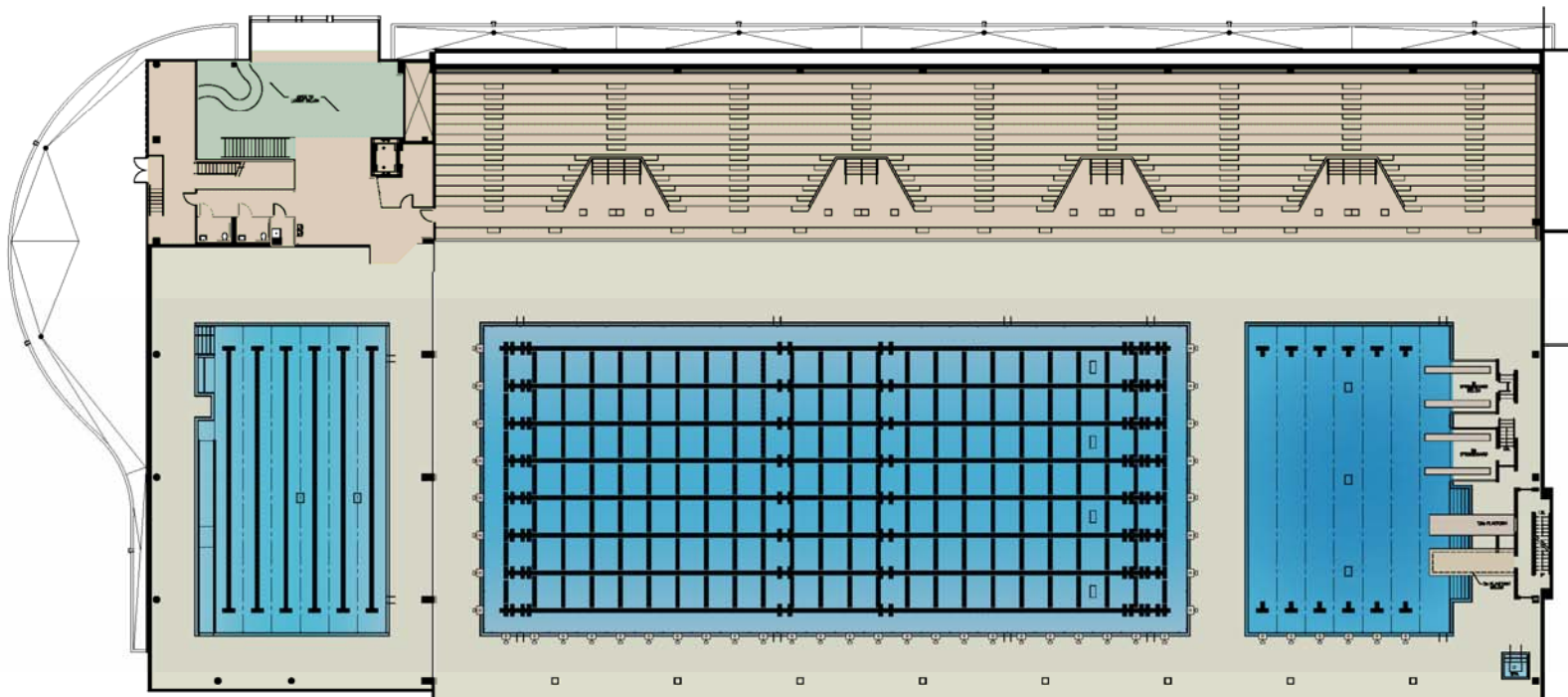






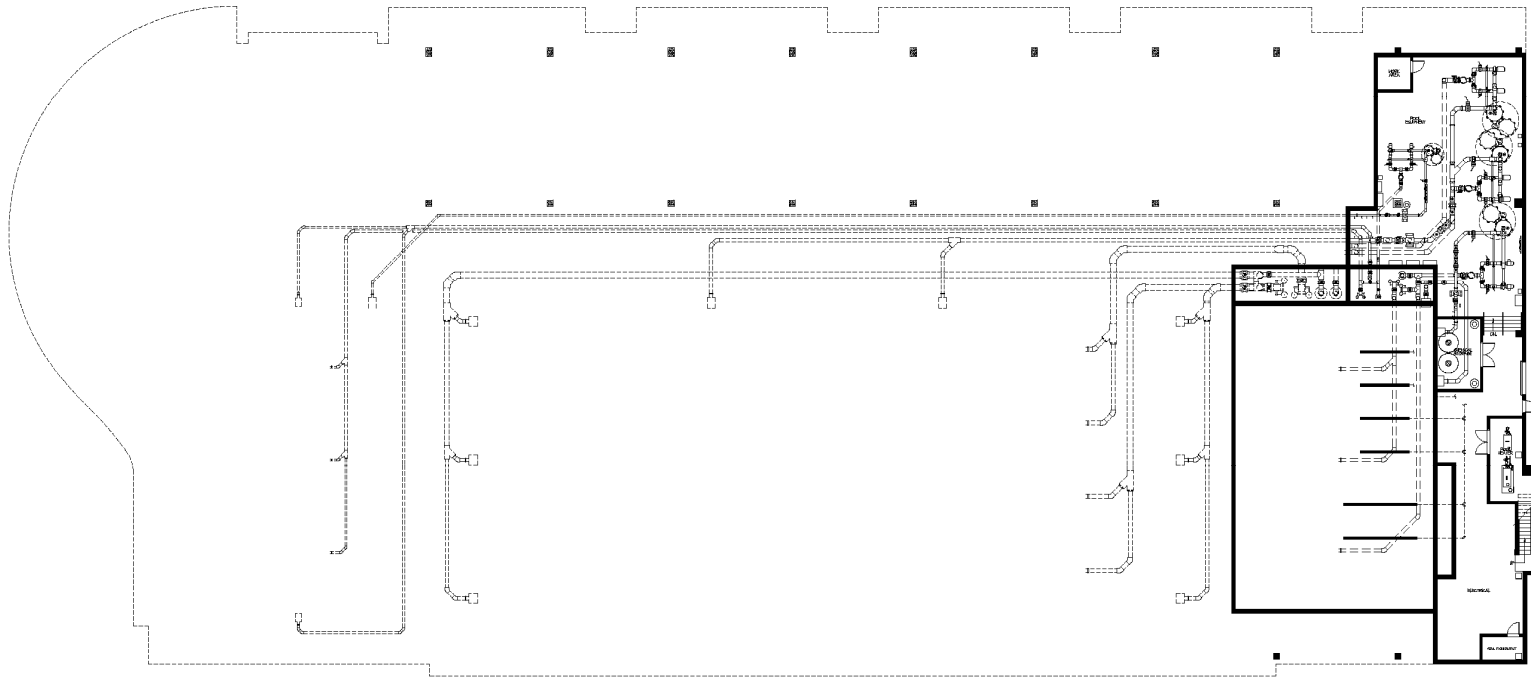
POOL DECK LEVEL

SCALE: 3/32" = 1'-0"

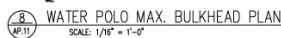
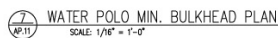
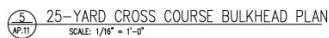
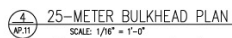
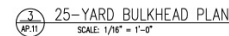
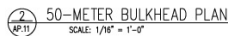
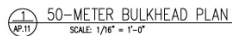


SEATING MEZZANINE LEVEL

SCALE: 3/32" = 1'-0"

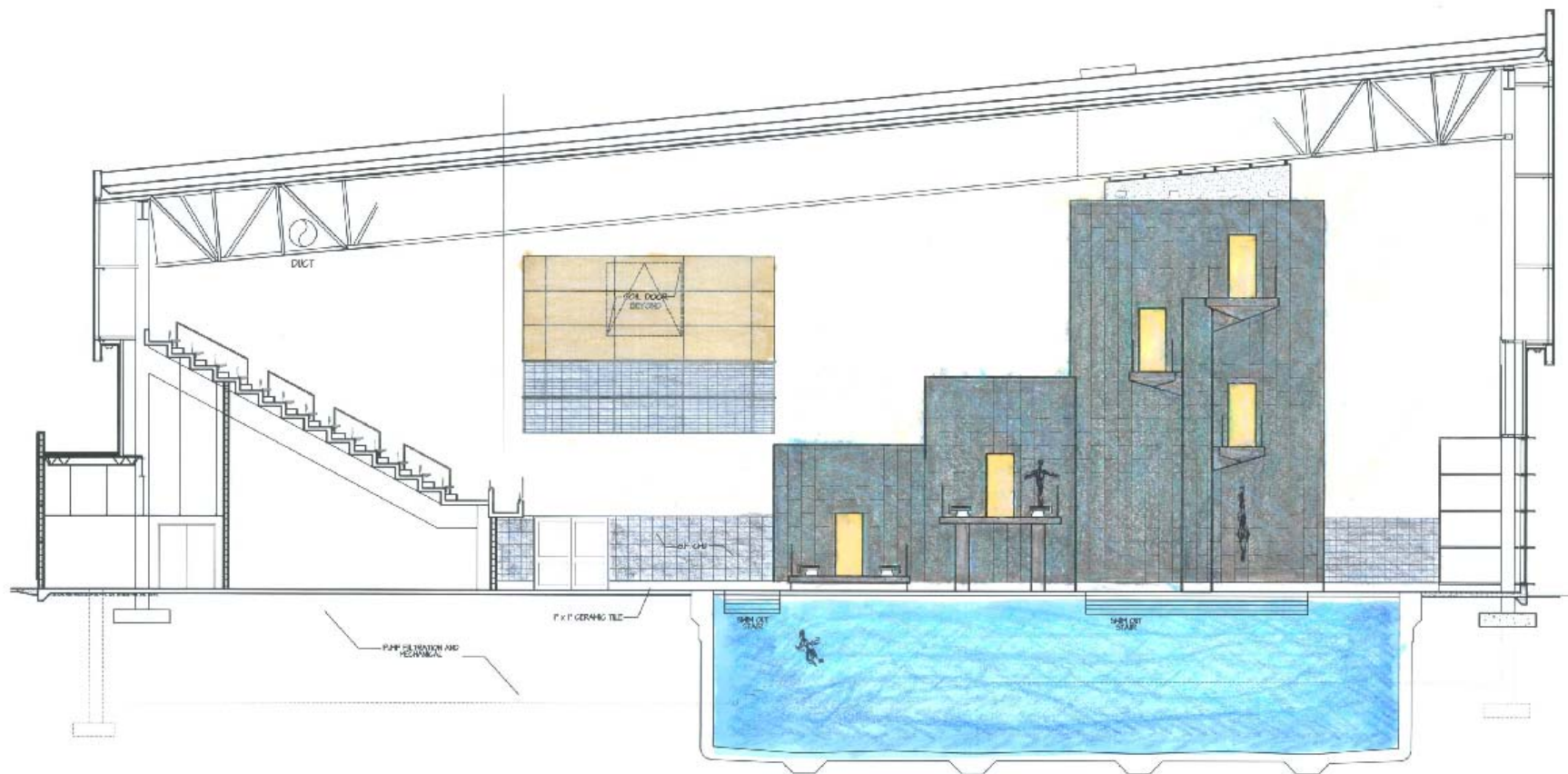


GROUND LEVEL
SCALE: 3/32" = 1'-0"



1. REFER TO DRAWING AP.12 FOR BULKHEAD PLANS, ELEVATIONS AND DETAILS.
2. REFER TO 7/AP.16 FOR WATER POLO ROPE LAYOUT.

BS	BACKSTROKE STANCHION POST (SEE DTL 4/AP.16)
RS	RECALL STANCHION POST (SEE DTL 4/AP.16)
RA	ROPE ANCHOR
SB	STARTING BLOCK (SEE DTL 2/AP.16)
SBA	STARTING BLOCK ANCHOR
WPA	WATER POLO ANCHOR
UL	UNDERWATER LIGHT
US	UNDERWATER SPEAKER





- Overall Dimensions
12'10.4" x 18'6.4"
- PS-16i LED Video Display
178 Lines of Resolution High x
336 Columns of Resolution Wide
- Identification Display with Truss

Greensboro Coliseum Complex Greensboro, North Carolina

Copyright © 2009 Daktronics. DD1644132 (DWG# 872154, Rev 0; 07-16-09)

Do not use for design/engineering or ad copy approval.

The details and expressions shown are conceptual in nature, confidential and proprietary. Final design and appearance may differ from artwork shown.
Do not reproduce by any means without the expressed written consent of Daktronics, Inc.

DAKTRONICS



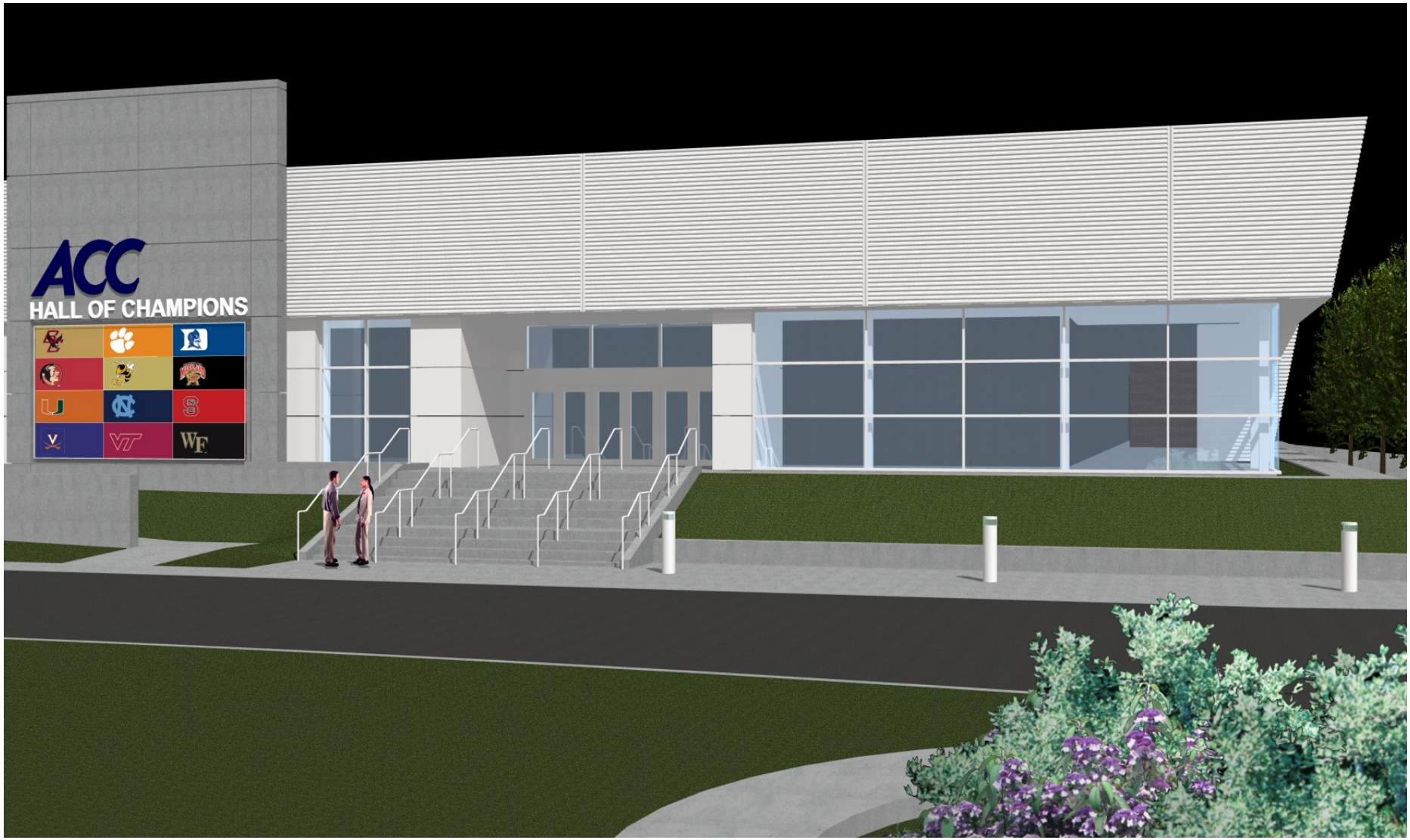
SITE PLAN
SCALE: 1" = 200'





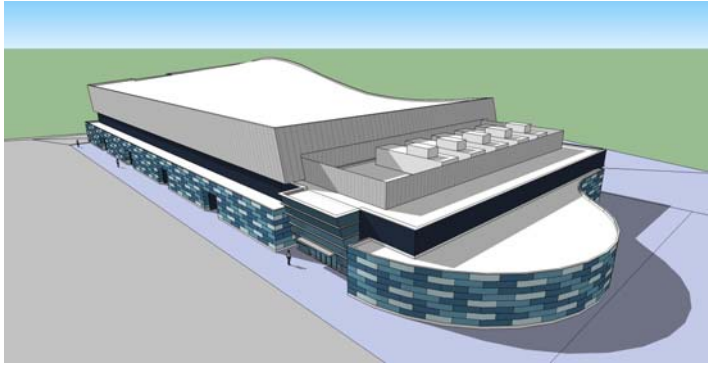






ACC
HALL OF CHAMPIONS





Greensboro Aquatic Center



ACC Hall of Champions

TIMELINE

Pre-Bid Meeting with Contractors

September 24, 2009

Bids Received

October 15, 2009

Value Engineering Negotiations

October 16 – November 6, 2009

Award Bid

November 17, 2009

Begin Construction

January 2010

ACC Hall of Champions Opening

March 2011

Greensboro Aquatic Center Opening

April 2011