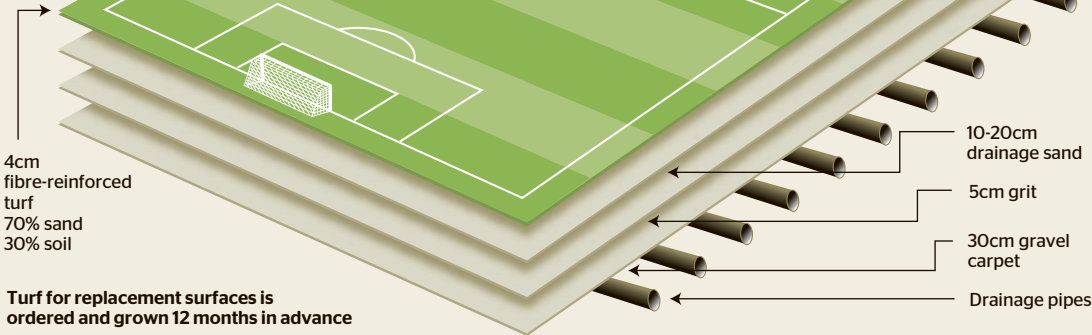


Surface tension How Arsenal have put Wembley in the shade

Wembley

The nature of Wembley as a multi-event venue means that its turf is designed to be replaced several times a year. The Emirates Stadium surface is permanent and used almost exclusively by Arsenal



Musical chairs

For concerts or non-sports events, a protective surface such as Terraplas, which allows light, air and water to penetrate, can be laid over the grass, or the turf removed completely. A steel plate was laid over the pitch area and covered with tarmac for the Race of Champions, for which Wembley was turned into a race track in December last year, and a new surface laid once the tarmac and steel was raised

Heavy schedule

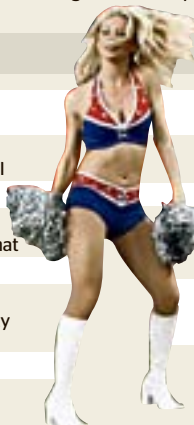
May 9 FA Trophy final
May 10 FA Vase final
May 17 Blue Square Premier play-offs final
May 23 Coca-Cola League Two play-offs final
May 24 League One play-offs final
May 25 Championship play-offs final
May 30 FA Cup Final



Problem areas

According to Dave Saltman of pitchcare.com, a former groundsman at the Millennium Stadium in Cardiff, problems can include inadequate time for levelling and top-dressing after relaying of turf, while the synthetic fibres can make even cutting very difficult. If the surface is not completely level then grass cannot be cut as short without "scalping" the surface. Roots do not have time to grow through to lower layer

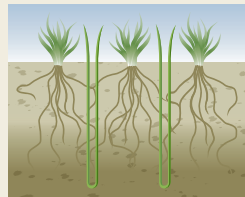
June 10 England v Andorra
June 13 Under-18 schools international
June 26 AC/DC
July 1, 3, 4, 5 Take That
July 9, 11, 12 Oasis
Aug 9 FA Community Shield
Aug 14, 15 U2
Aug 29 Carnegie Challenge Cup final



Sept 5 England v Slovenia
Sept 9 England v Croatia
Sept 18, 19 Coldplay
Oct 14 England v Belarus
Oct 25 Tampa Bay Buccaneers v New England Patriots
Nov 14 or 18 World Cup play-off or England friendly



Emirates Stadium



Arsenal's Grassmaster pitch is made by Desso Sports Systems and is a frequent winner of the Premier League's pitch of the year award. It is a natural seeded

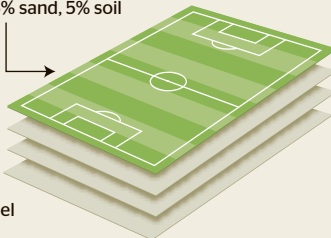
grass surface reinforced with 20 million (3 per cent) synthetic grass fibres injected 20cm into pitch. It is not suitable for multi-event use

Light schedule

After the Premier League season ends, the Emirates will play host to two days of corporate and community matches and four pre-season friendlies in the Emirates Cup on August 1 and 2. It is also hosting The Capital Radio Summertime Ball on Sunday, June 7 and possibly one international friendly involving Brazil

30cm grass pitch with 3% synthetic fibres - 95% sand, 5% soil

10-20cm drainage sand
5cm grit
30cm gravel carpet



Lighting up



To stimulate growth during winter and to improve pitch density on shady areas in summer 612 grow lamps are used. In use 24 hours a day between November and March, so that grass continues to grow all year. A similar system is in place at Wembley