

## Paranormal Devices Built By Bill Chappell

For some weird reason people think I only build things that talk!

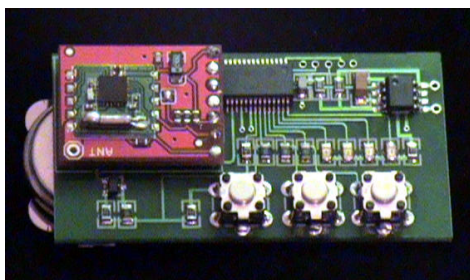


The PX:

Status (Release 3/1/2010)

Based on the Original Puck and Ovilus the PX is ultra small low power ITC device

That can run standalone or attached to a computer



The FM Ghost Box:

Status (On the Bench series Project 2010 )

Small battery operated palm sized programmable FM Ghost Box

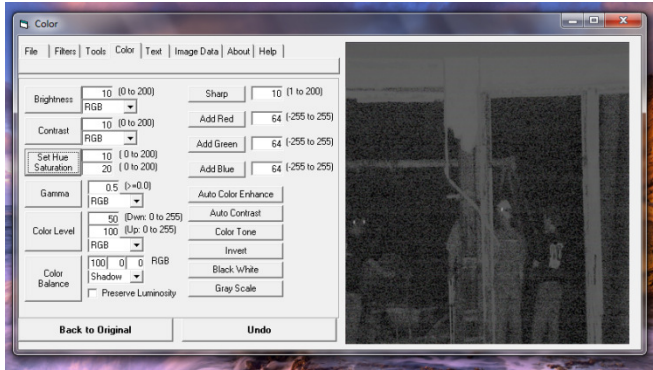
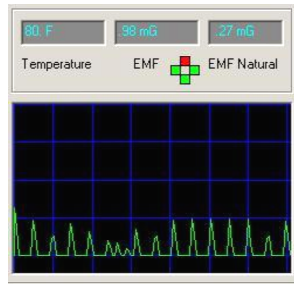


Image PX:

Status (Complete)

A free Software application designed to enhance and clarify images formatted

For net books.



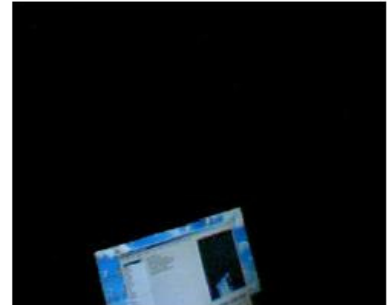
Pucks:

The Paranormal Puck.

Status ( Released 4/2008)

Designed to experiment with ITC phenomena

Captures and data logs changes in the environment, capture images and audio Via the host PC. Includes alarm functions for unattended data capture “ Shadow Image captured in real time from Puck”





The ECM Puck:

Status (Released 1/1/2009)

Based on the Original Puck but a smaller set of sensors no video and Audio functions



The Ovilus:

Released 4/2008

A hand held device that takes energy readings and creates speech

Device has seven modes of operation with a built in 512 word list and a full phonetic

Generator for ITC experimentation



THE Ovilus FX:

Status (release date 5/2009)

The successor to the Ovilus the FX has 1024 word list built in The Ability to re-play the

Last 1000 words said, and a pc interface (rs-232) to allow the real time capture of data

and words spoken. The FX has 9 modes of operation including a built in speaker



Talker:

Status (Released 7/2008)

A low cost kit utilizing phonetic speech to attempt ITC communications



Talking Sonic Reader

Status ( field testing)

This unit tells the user how far way an object is by using ultrasonic sound it will also data log to a host PC as well.



R.E.V.P (Reverse EVP)

Status ( tested)

This device was built to understand 1 potential method of how EVP is created.

Also another attempt at ITC communication . Based on simple em modulation the REVP sends audio out in the form of an electromagnetic field . Why, I believe it's the same type of process as some types of EVP is being captured. It also allows a way to create repeat events for new Equipment development.





Therm a Sound

Status ( Proto versions being tested )

Like Many investigators thermal imaging is not an economical answer.

The Therm a Sound employ's both thermal imaging and Ultra sonic s in the same unit.

By sweeping back and forth a thermal image is obtained at the same time ultra sonic Measurements are taken of the same area. The result is a thermal image that also contains Distance information. The software can tell the user where an item is in relation to the Therm a Sound in real time.



God Helmet: Status ( field testing)

This device creates a strong magnetic field, worn on the temple it creates a sense of Being watched or a religious experience. However this controller can operate independent from it's programming using the same input sensor system as the Ovilus allowing the helmet to be driven By the environment.



IR UV Strobe:

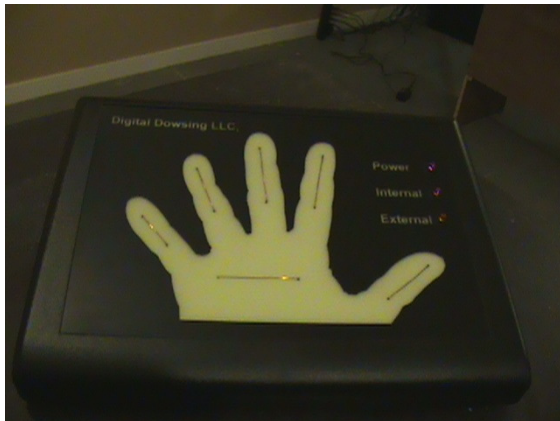
Status ( field testing)

Create strobe effects in 4 different wave lengths of light all computer controlled



EM Pumps: Status (Released) \*\* Seen on Ghost Adventures

This device has a very simple premise, it creates a EM field in the ELF VLF frequency Range sweeping from elf to Vlf . The Idea is a possible beacon or attraction for phenomena. And a source of energy



Biometric reader:

Status (Proto)

This device is a hybrid between EKG and a lie detector the premise is to measure human response To the environment , question or sensation.



Video OSD Ovilus

Status (Proto field testing) \*\* Seen on the Ghost Adventures

This is an Ovilus couple with an IR camera and a Video Goggle unit. The user can operate

In complete darkness will getting data in a Heads Up display fashion via the goggles.

Allows the ability to be hands free of other equipment in the dark while monitoring in real time.

OSD (No Image )

Status (Prototyped)

The OSD will allow any device with blue tooth serial or analog outputs to be formatted and

Merged with video data. The Idea is a way to centralize all captured data with perfect

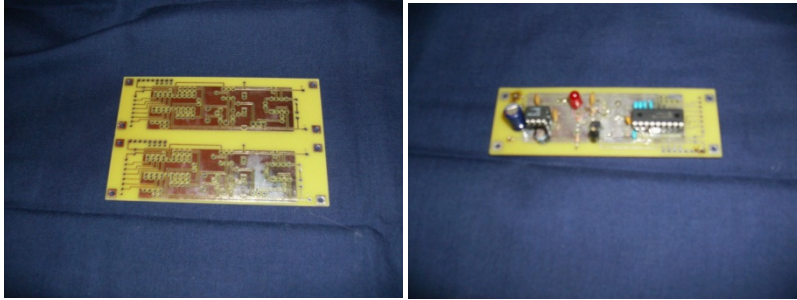
Synchronization to video and audio feeds.



The Gravity well

Status ( Proto)

Designed to produce extremely high EM fields , this device is an attempt to create a magnetic vortex.



### Computer controlled Sweep Radio "BOX"

Status ( devices are in field testing )

After doing the first RS hack box I started building a computer controlled version capable of

Multiple modes of operation linear sweep , random sweep and wave tuning. My original intension was to add these functions to the Puck.



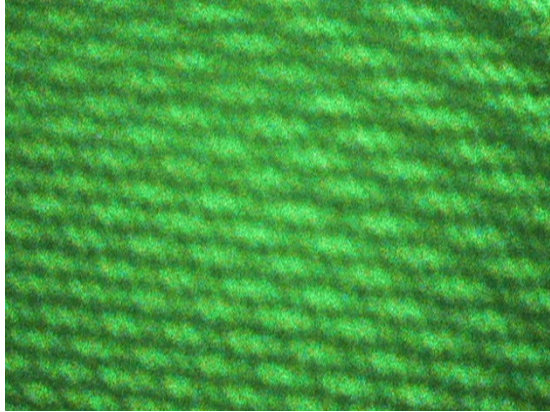
### ASA (Atmospheric sampling array)

Status ( testing)

This unit samples the air for particulate count, calculates humidity and dew point

as well returns temperature a barometric pressure.





Close Up Field Image

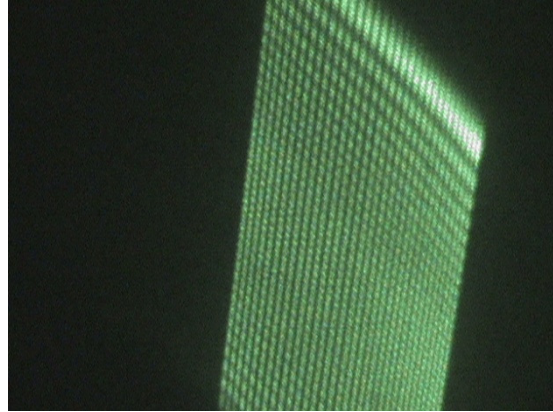
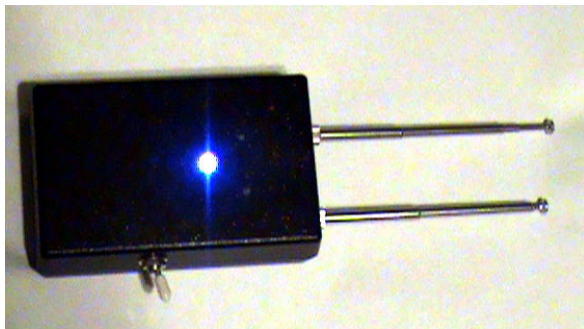


image projected on a flat surface

### Dual Head Laser

Status (Proto) \*\* As seen in the Booth Brother film "The Possessed"

Designed to utilize two spectrums of light (520 nm) and (820 nm)IR these laser beam split and create a rotating 3D cube effect. Based on a theory from Keith Age. The laser light creates a visible grid to try and detect the presence of "Shadow People"



Digital Dowsing rods

Status(Complete)

One of my first emf based devices used to create a dosing rod type of experience

Using an electronic display



3D EM reader: Status (Proto)

Based on the puck these device talk to each other and triangulate energy fields in the environment

The Data is feed to a PC where in can be over laid on live video to produce a picture of the energy fields.



Micro EMF Detector:

Status (Complete) [www.chapp.com/emf.wmv](http://www.chapp.com/emf.wmv)

This Device is 100% digital single switch on off with four led display of EMF strength



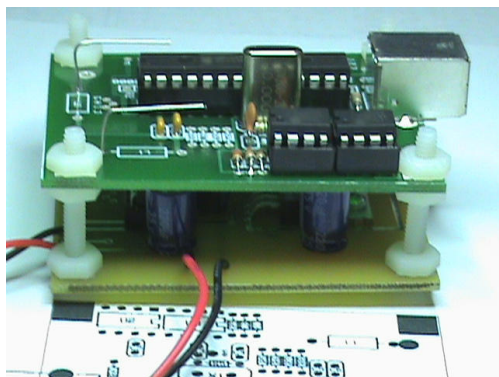
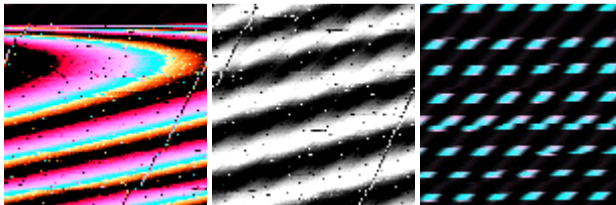
Ovilus II

Status ( Proto on Hold )

This is a hand held version of the puck with full video and audio functions with the addition

Of ultra sonic rage detection . Also displays emf as video data

Example:



Capacitive field reader

Status ( Proto )

Device reads capacitive changes in open air, ultra sensitive to field changes

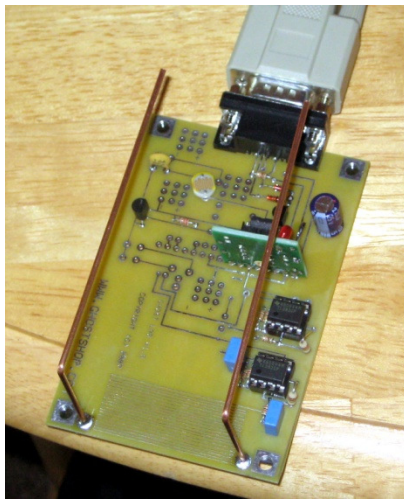


Talker Plus

Status ( Ready for Release )

Talker is a EMF/ Inductive device that has an interface for 0-5 volt sensors such as light and

geomagnetic devices. It converts signals to Phonetic speech or signals to tones.

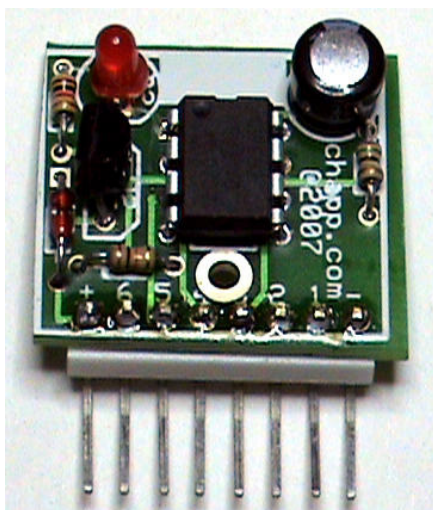


Ghost Lab

Status ( Complete )

Ghost creates a data streams from EMF, Light, Temperature and motion.

The Data is used to trigger event logging camera's and other devices.



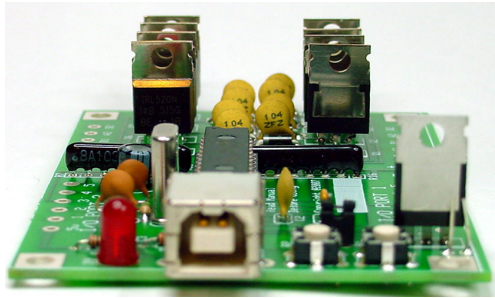
Mini Board

Status (Complete )

The Mini Board is a broad use micro controller that's just a little larger than a quarter.

It can be programmed to run Radio's in Linear sweep and RVG type modes as well as trigger

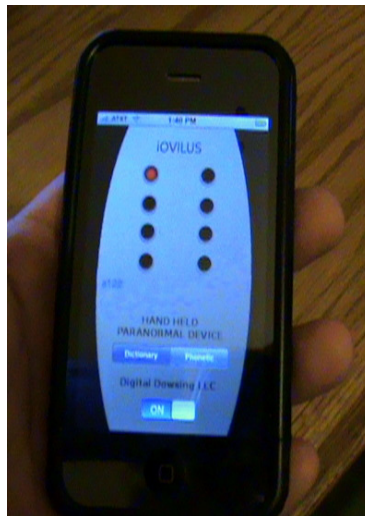
Strobe lights or modulate lasers for intensity control.



High Current Controller,

Status ( Complete )

Designed to pulse high current magnetic coils 200+ volts dc at 60 amps used for high intensity magnetic experiments



iOvilus Status ( Released ) Creating an ITC type device on a Cell Phone. The iOvilus has an enhanced dictionary mode featuring a 1000 word vocabulary for the iPhone and iPod Touch

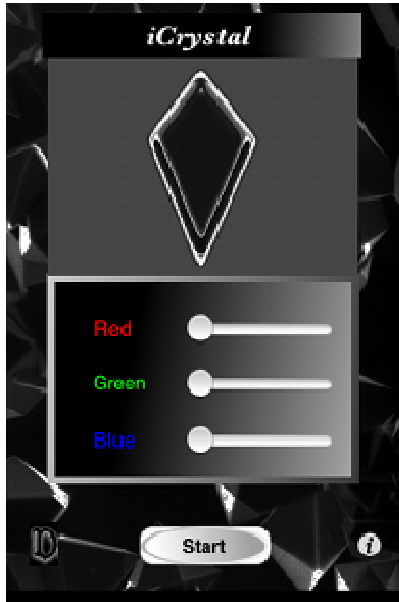


Gaia Speaks:

Status (Complete)

This Iphone app uses an array of paranormal pucks tied to a special Sensor array to allow for global consciousness experiments via the iPhone and iPod





iCrystal:

Status (Complete)

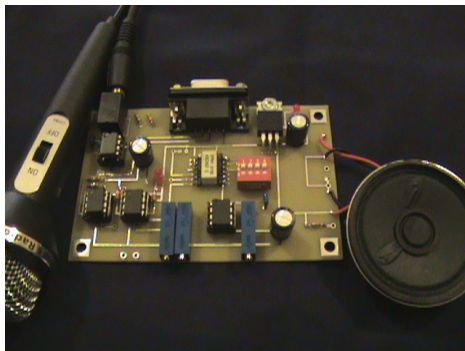
This iPhone app uses the LCD to attempt charging and changing Crystals stored energy patterns

iPhone or iPod

Five Channel USB Strobe controller: (No Photo ) Status (Complete)

Show here inside a Creepy Hollow IR Strobe See Video [www.chapp.com/strobe.wmv](http://www.chapp.com/strobe.wmv)

Each channel can control up to 30 amps at 12 volts DC. Designed for large are high intensity displays



Inductive Transceiver Status(Proto)

This ITC device has no radio no voice chip just an Inductive feedback circuit. And tone generation . The feedback circuit will cancel out the tones leaving just a hissing

Sound. When the device is entreated with the tones become present again in the form of an Audio signal.

Use this device by calling crossovertalk on Skype



Prototype SEM meter

I continue to build new devices for the paranormal field all the time. My focus has shifted slightly  
As I plan to create more software applications rather than hardware In the future. With the massive  
Market share and processing power of many of the new cell phone Ghost Hunting will never be the  
same.

What the Heck is SEM ?

**S**entient **E**nergy **M**asses

Thanks for taking a look !

Best Regards !

Bill Chappell

