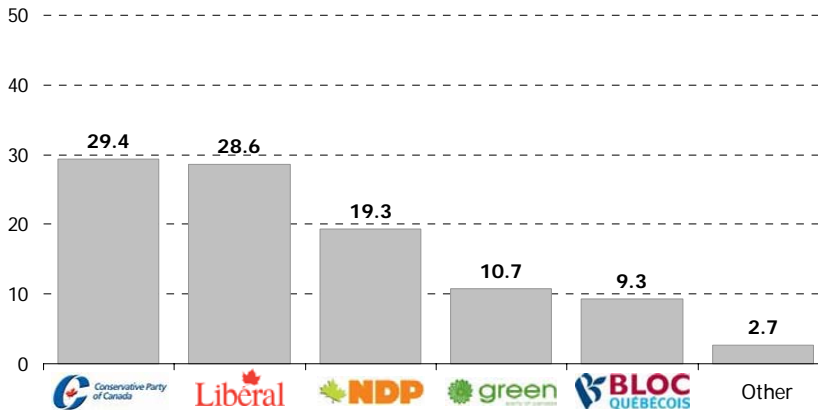


Top Line Results:

Federal vote intention

Q. If a federal election were held tomorrow, which party would you vote for?



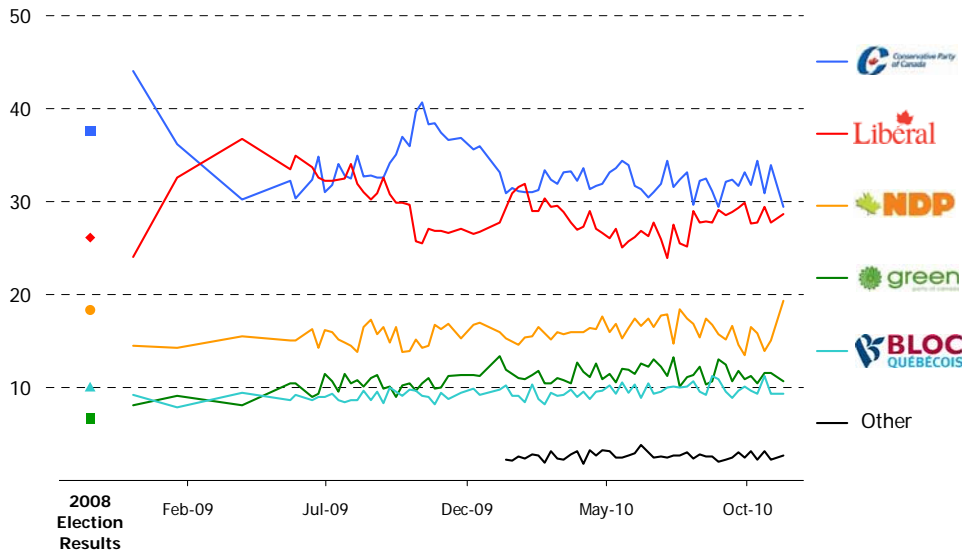
Note: The data on federal vote intention are based on decided and leaning voters only. Our survey also finds that 12.6% of Canadians are undecided/ineligible to vote.

Copyright 2010. No reproduction without permission

BASE: Decided voters; November 3-9, 2010 (n=1,587)

Weekly tracking of federal vote intention

Q. If a federal election were held tomorrow, which party would you vote for?



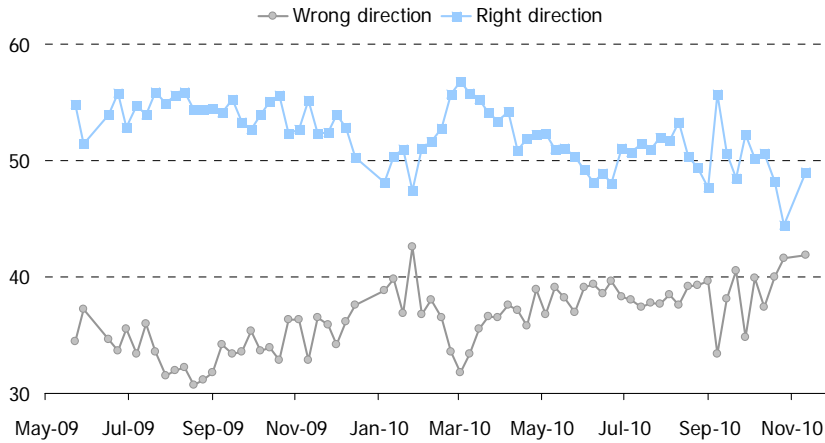
Note: The data on federal vote intention are based on decided and leaning voters only. Our survey also finds that 12.6% of Canadians are undecided/ineligible to vote.

Copyright 2010. No reproduction without permission

BASE: Decided voters; most recent data point November 3-9, 2010 (n=1,587)

Direction of country

Q. All things considered, would you say the country is moving in the right direction or the wrong direction?

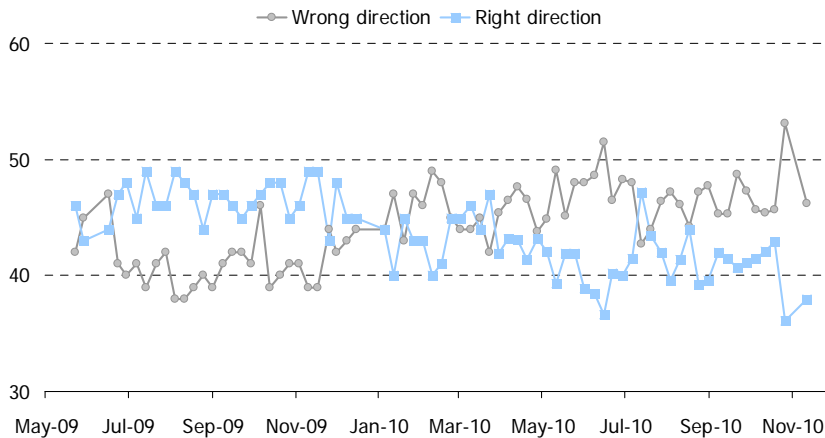


Copyright 2010. No reproduction without permission

BASE: Canadians; most recent data point November 3-9, 2010 (n=half sample)

Direction of government

Q. All things considered, would you say the Government of Canada is moving in the right direction or the wrong direction?

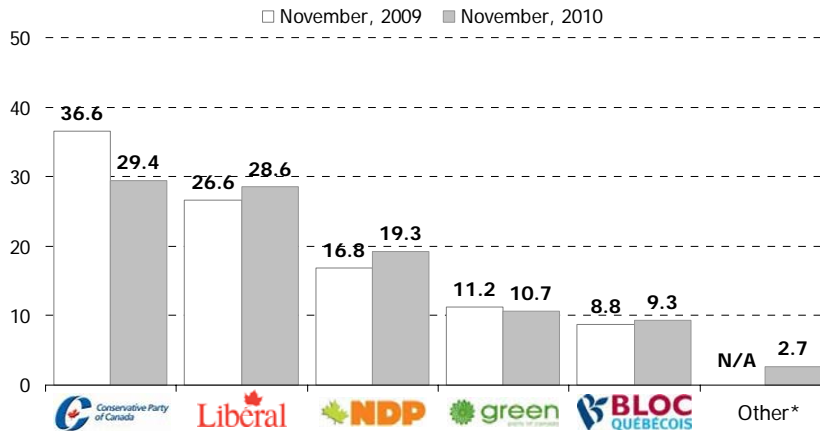


Copyright 2010. No reproduction without permission

BASE: Canadians; most recent data point November 3-9, 2010 (n=half sample)

Federal vote intention compared to last year

Q. If a federal election were held tomorrow, which party would you vote for?



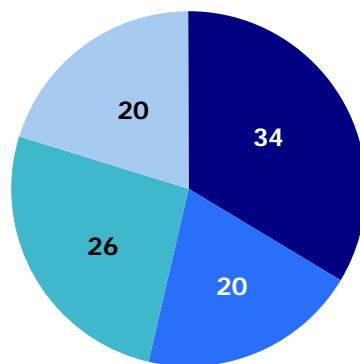
*EKOS did not prompt for "other" in addition to the main political parties until January, 2010.

Copyright 2010. No reproduction without permission

BASE: Decided voters; November 3-9, 2010 (n=1,587)

Attitudes towards purchase of F-35 fighter jets

Q. Recently there has been a lot of discussion about the Government of Canada's decision to purchase up to 65 new F-35A fighter jets, to replace the current fleet of F-18's at a cost of roughly \$16 Billion, which includes maintenance costs. Thinking about this, would you personally oppose or support that decision.



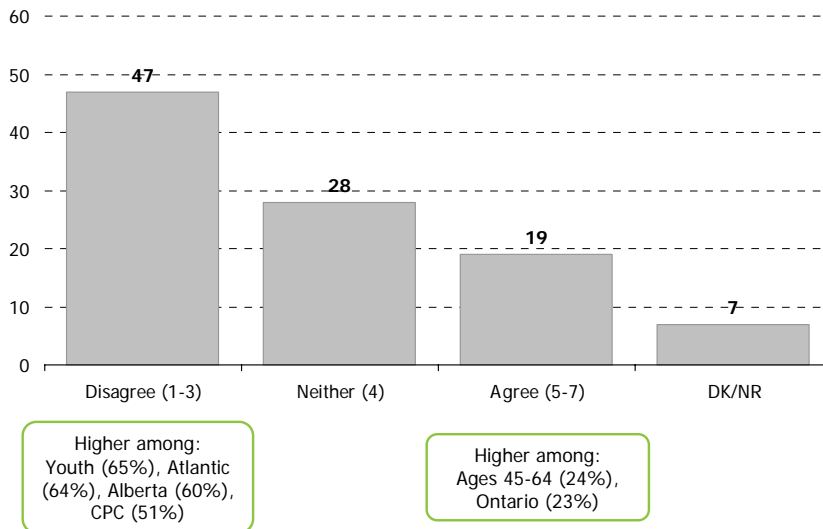
■ Strongly oppose
 ■ Somewhat oppose
 ■ Somewhat support
 ■ Strongly support

Copyright 2010. No reproduction without permission

BASE: Canadians; November 3-9, 2010 (n=1,815)

Perceptions of job security

Q. Please rate the extent to which you agree or disagree with the following statement: I think there is a good chance I could lose my job over the next couple of years.

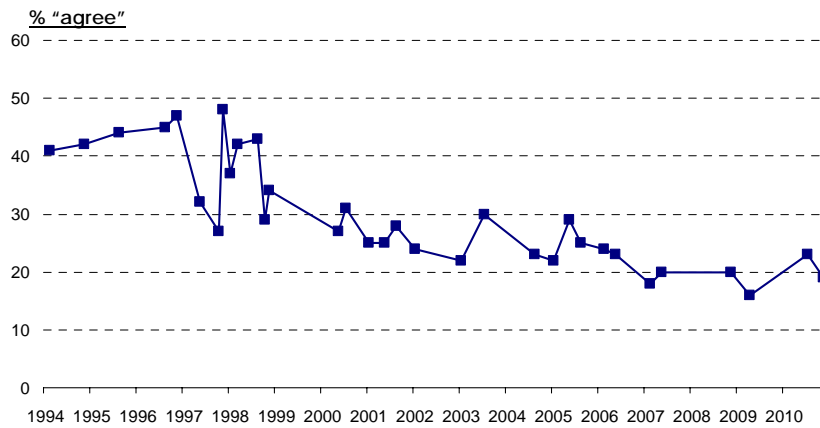


Copyright 2010. No reproduction without permission

BASE: Canadians; November 3-9, 2010 (n=1,815)

Tracking perceptions of job security

Q. Please rate the extent to which you agree or disagree with the following statement: I think there is a good chance I could lose my job over the next couple of years.

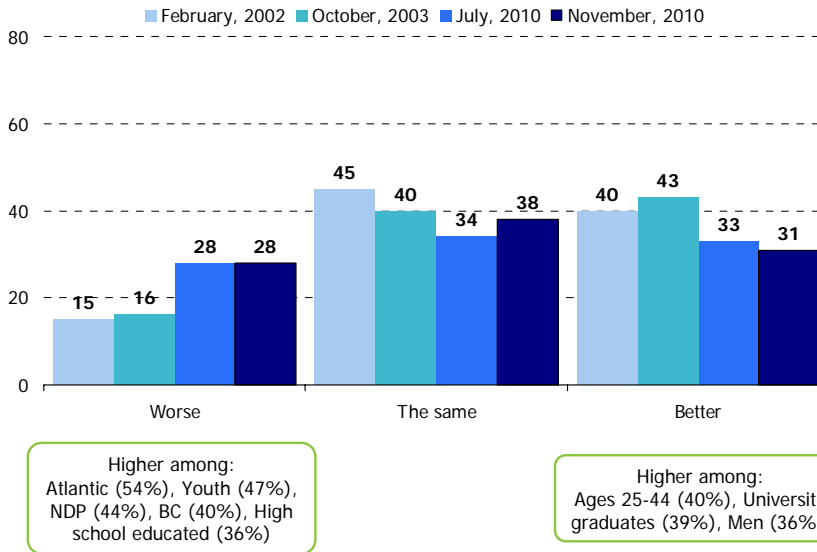


Copyright 2010. No reproduction without permission

BASE: Canadians; most recent data point November 3-9, 2010 (n=1,815)

Outlook on short-term personal financial situation

Q. Thinking ahead over the next year or so, do you think your personal financial situation will be better or worse than it is today?

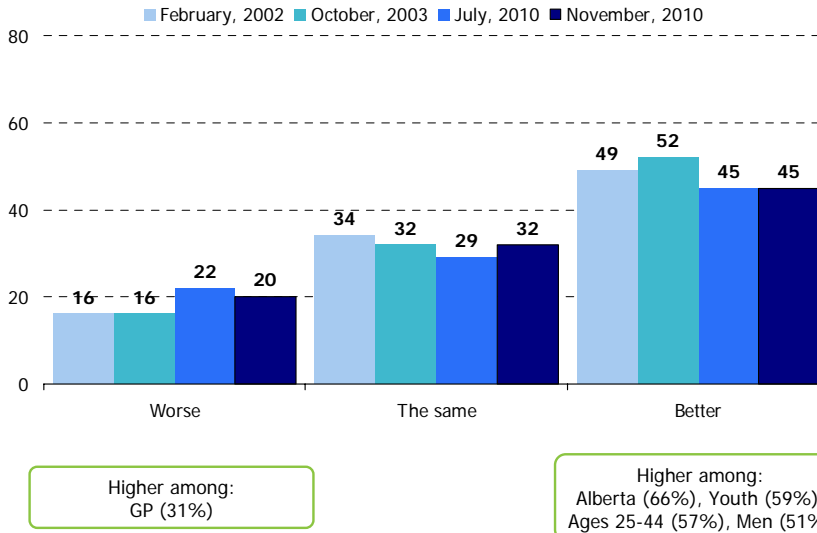


Copyright 2010. No reproduction without permission

BASE: Canadians: most recent data point November 3-9, 2010 (n=half sample)

Outlook on long-term financial situation

Q. Thinking ahead over the next five years or so, do you think your personal financial situation will be better or worse than it is today?



Copyright 2010. No reproduction without permission

BASE: Canadians: most recent data point November 3-9, 2010 (n=half sample)

Methodology:

EKOS' weekly tracking polls are conducted using Interactive Voice Recognition (IVR) technology, which allows respondents to enter their preferences by punching the keypad on their phone, rather than telling them to an operator.

In an effort to reduce the coverage bias of landline only RDD, we created a dual landline/cell phone RDD sampling frame for this research. As a result, we are able to reach those with both a landline and cell phone, as well as cell phone only households and landline only households. This dual frame yields a near perfect unweighted distribution on age group and gender, something almost never seen with traditional landline RDD sample or interviewer-administered surveys.

The field dates for this survey are November 3-9, 2010¹. In total, a random sample of 1,815 Canadians aged 18 and over responded to the survey (including a sub-sample of 1,587 decided voters). The margin of error associated with the total sample is +/-2.3 percentage points, 19 times out of 20.

Please note that the margin of error increases when the results are sub-divided (i.e., error margins for sub-groups such as region, sex, age, education). All the data have been statistically weighted to ensure the samples composition reflects that of the actual population of Canada according to Census data.

¹ Please note that these dates are not inclusive of weekends or holidays, as we do not survey on Saturday or Sunday, nor do we survey on Thanksgiving.