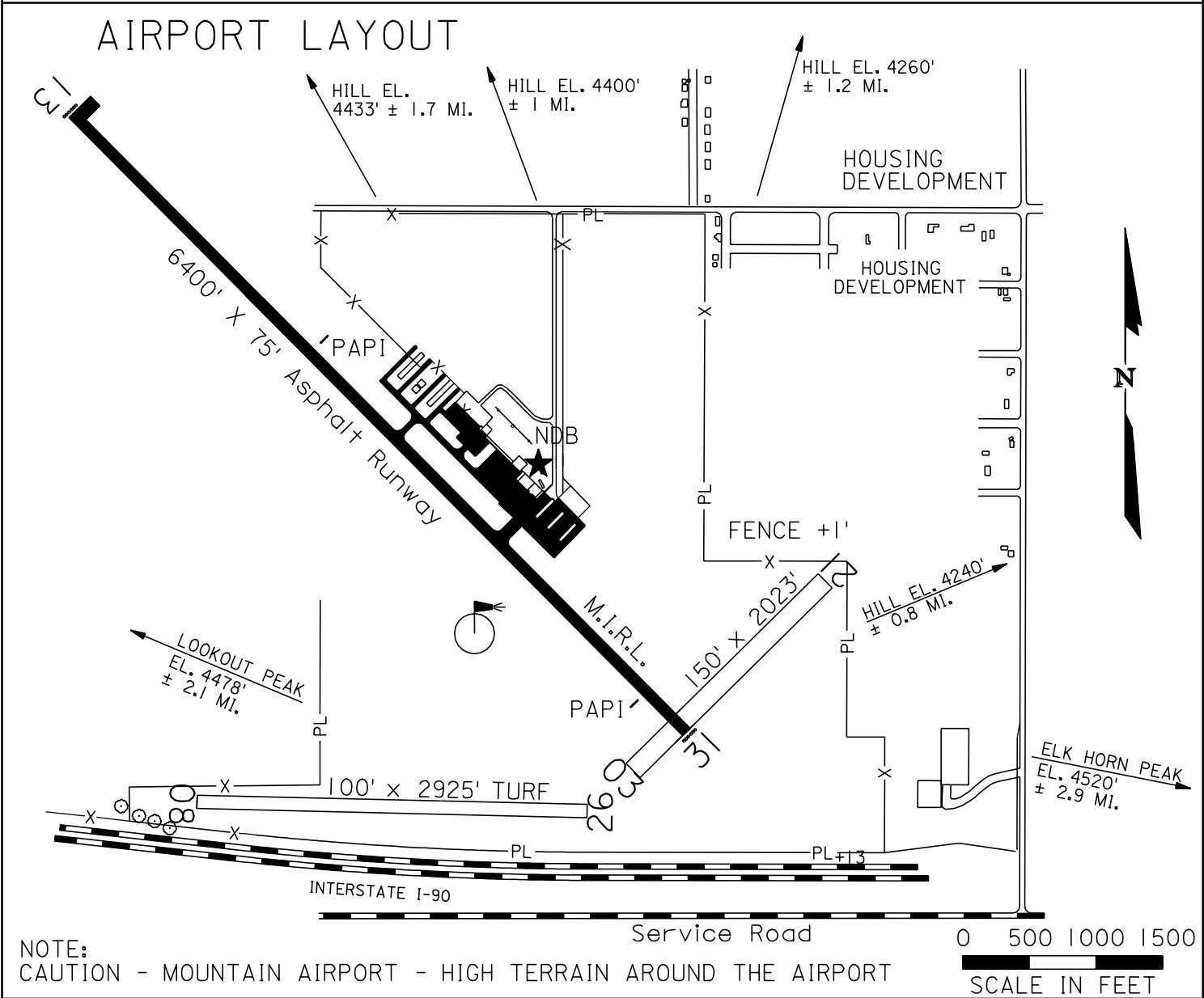
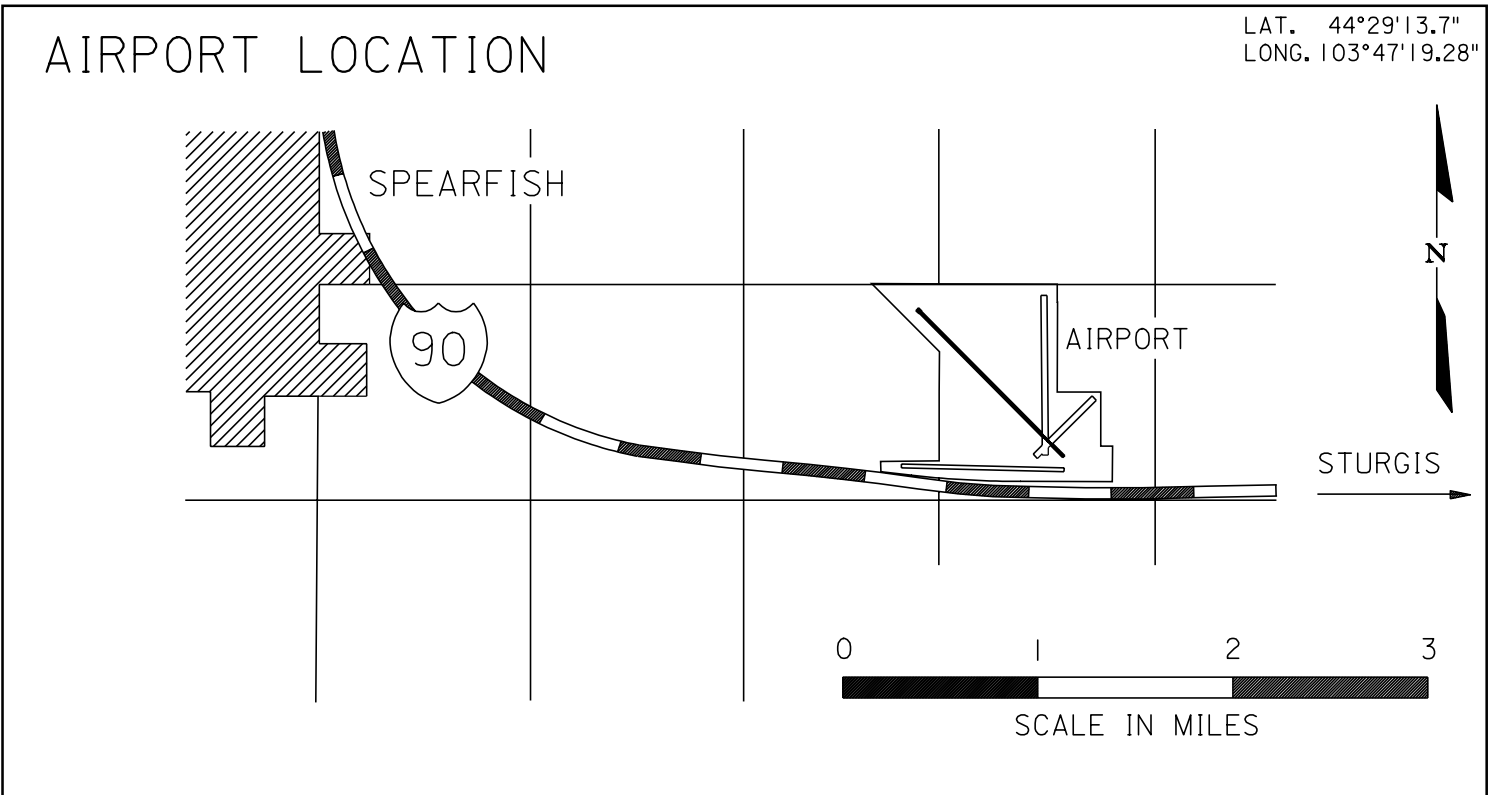




SPEARFISH

BLACK HILLS/CLYDE ICE FIELD

Airport Ident SPF



AIRPORT ELEVATION 3929

<p>RUNWAY SURFACE: 12 / 30 Asphalt, 8 / 26, 3 / 21 and 17 / 35 Turf</p> <p>LIGHTED: 12 / 30 and Beacon</p> <p>FUEL: 100 LL, JET</p> <p>REPAIRS: Major, Minor and Avionics</p> <p>TRANSPORTATION: Rental Car</p> <p>MEALS: Machine Served</p> <p>MANAGER: Eagle Aviation (Ray Jilek) (605)642-4112</p> <p>OWNER: Lawrence County</p>	<p>RADIO: Unicom 122.7 Huron 122.55</p> <p>NAV. AIDS: PAPI's RWYs 12 & 30 For Runway Lights key Mike 5 times 122.7 NDB Freq. 300 MKA GPS RWY 12</p> <p>FSS: 1-800-992-7433</p> <p>WEATHER: FSS 122.55 AWOS 118.325; (605)642-8536</p> <p>REMARKS: Attended daylight hours, Telephone, Lounge Available 24 hours.</p> <p>Dist. between threshold lights 5074', 541' DISPL threshold available at end of runway #30</p> <p>RWY #12 Right Hand Traffic 5615' avail. for T.O. & Landing RWY #12</p>
---	---