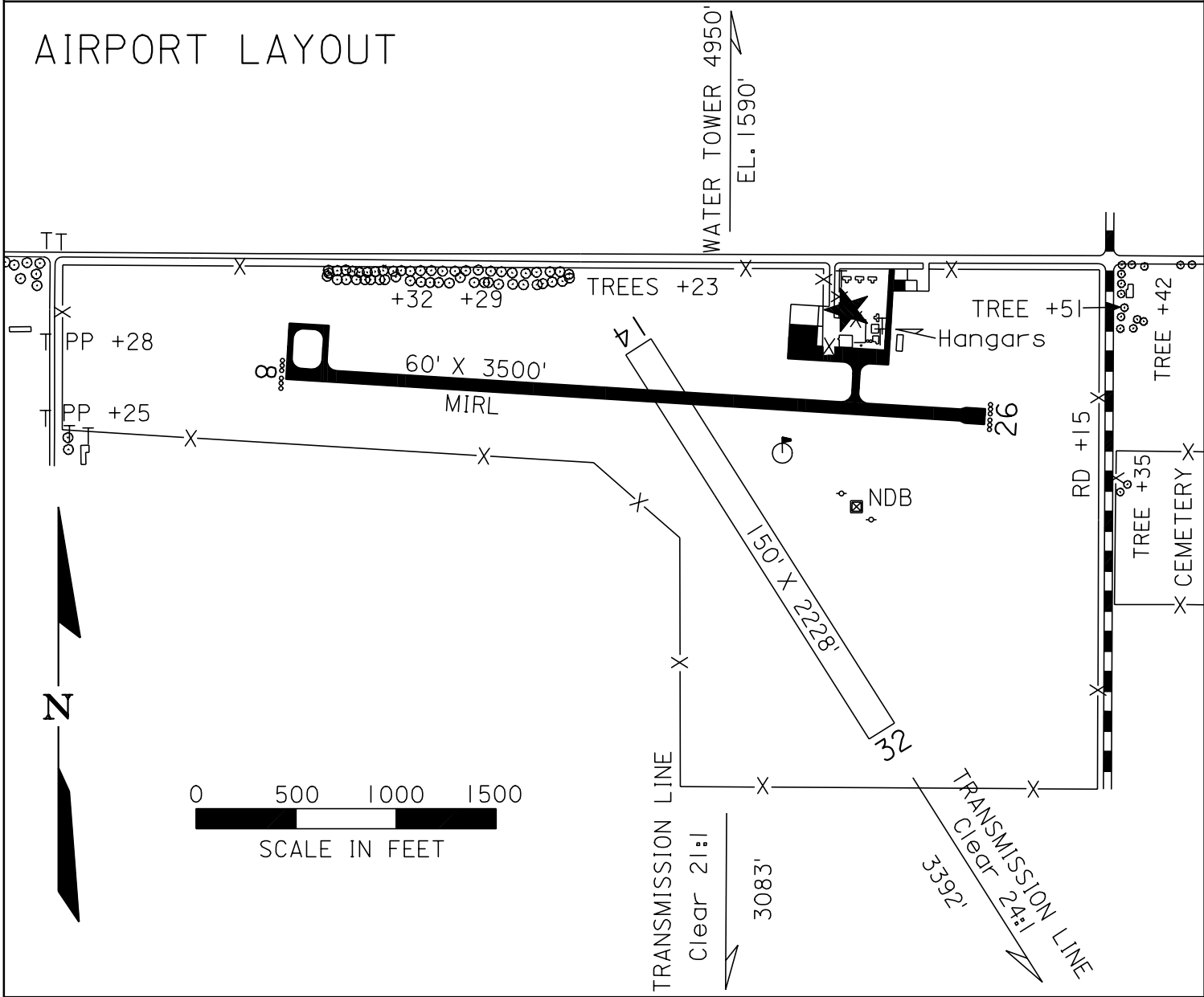
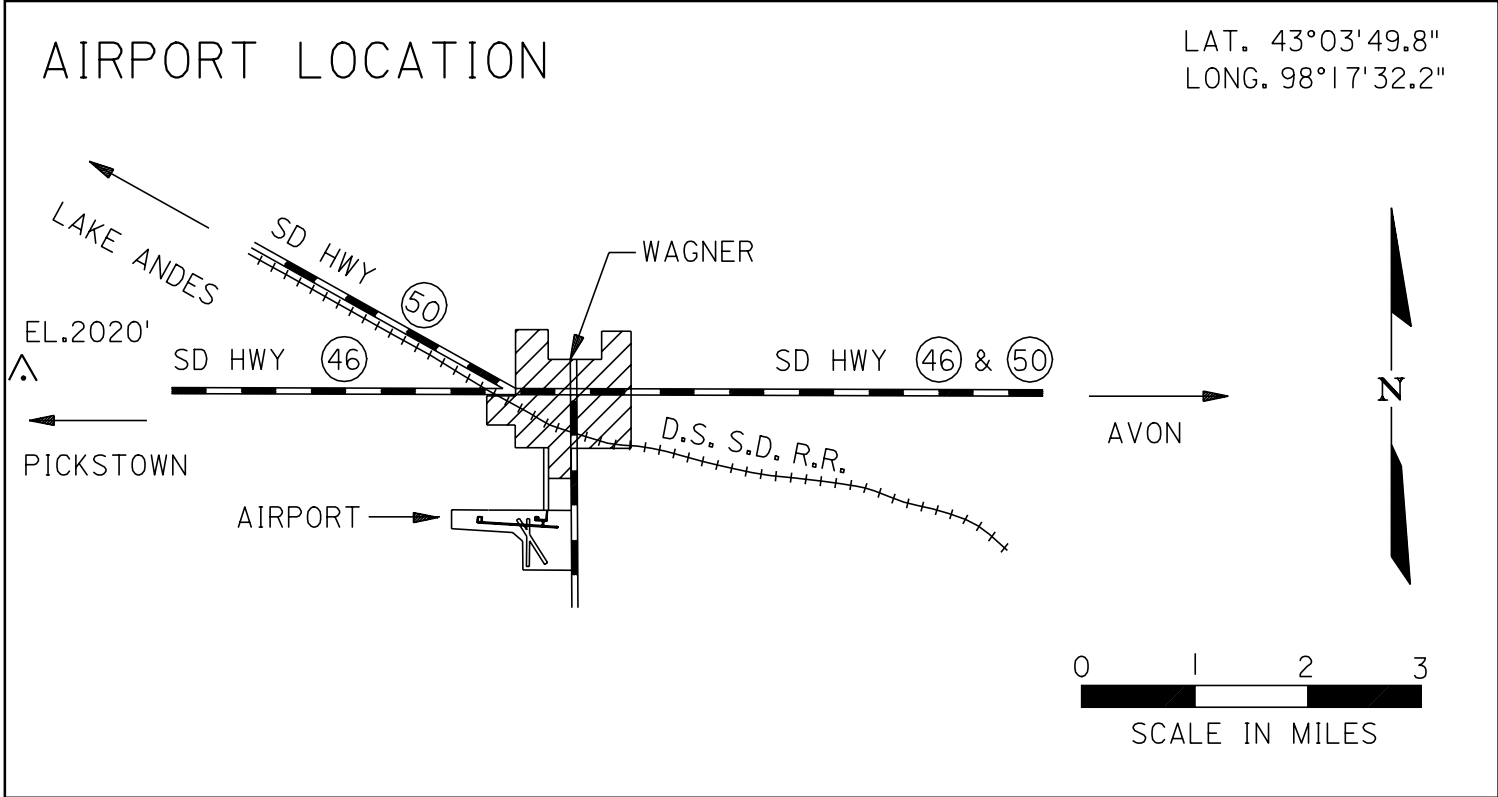




WAGNER

Airport Ident AGZ  
WAGNER



AIRPORT ELEVATION 1479'	
<p><b>RUNWAY SURFACE:</b> 8/26 Asphalt 14/32 Turf</p> <p><b>LIGHTED:</b> 8/26 and Beacon</p> <p><b>FUEL:</b> 100 LL</p> <p><b>REPAIRS:</b> Major</p> <p><b>TRANSPORTATION:</b> Courtesy Car</p> <p><b>MEALS:</b> In Town</p> <p><b>MANAGER:</b> John Otte (605) 384-5858</p> <p><b>OWNER:</b> City of Wagner</p>	<p><b>RADIO:</b> Unicom 122.8</p> <p><b>NAV. AIDS:</b> NDB 392 AGZ, VFR Use Only.</p> <p>Lights 122.8 3 Times Low Int. Mike-a-lite 5 Times Med. Int. 7 Times High Int.</p> <p><b>FSS:</b> 1-800-992-7433</p> <p><b>WEATHER:</b> FSS</p> <p><b>REMARKS:</b> Attended 8:00-5:30 Mon-Fri RWY 14-32 closed Nov.-April. Call after hours at (605) 487-6262 or (605) 491-0470. Telephone and hangar space available. Self serve fuel 24 hours a day.</p>

WAGNER

Revised: 10/09