

ASDE-X and Runway Status Lights

Los Angeles International Airport

Overview and Schedule Update
July 2008

ASDE-X

(Airport Surface Detection Equipment – Model X)

ASDE-X Program

Program Goals

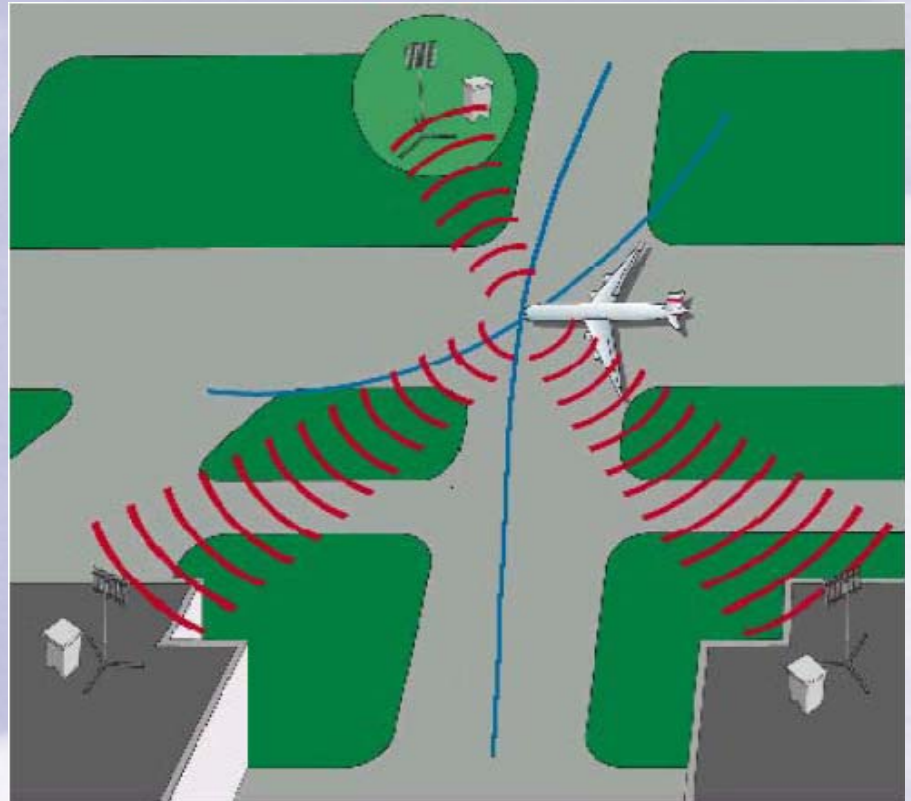
- Reduce the risk of critical runway incursions
- Increase controller situational awareness
- Improve surface operational efficiencies



ASDE-X Program

ASDE-X is:

A modular surface surveillance system that processes multiple radar sources, multilateration and ADS-B sensor data.



ASDE-X Program

ASDE-X will provide:

- Seamless movement area coverage for air traffic controllers
- Aircraft identification tags
- Reliable Conflict Alerting system

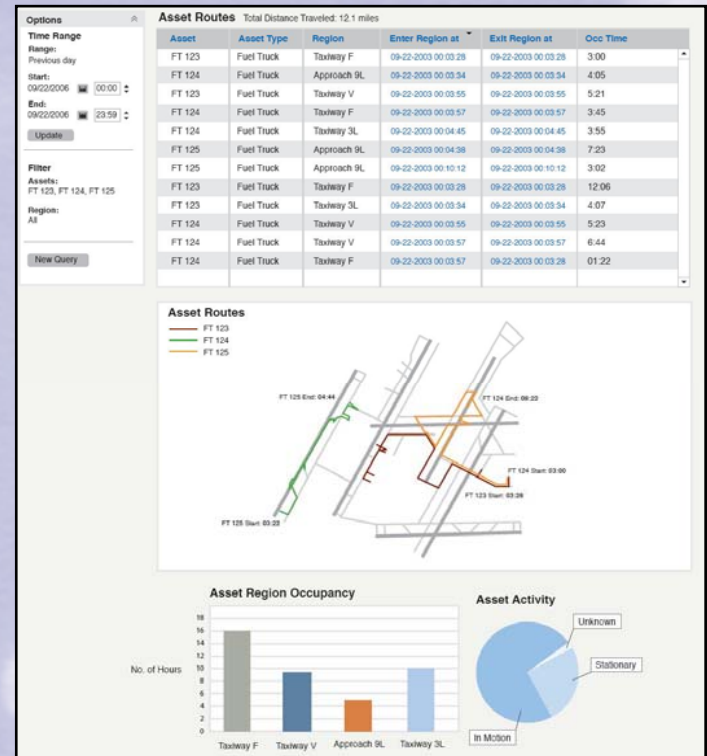


ASDE-X Program

LAWA Benefits from Data

Distribution:

- Identification of Trends in Traffic Flows
- Identification of recurring operational problems
- Ability to better forecast the impact of future operational events
- Better tracking of Aircraft Parking and Gate utilization



ASDE-X Program

Future Safety Enhancements:

- Installation of ASDE-X will permit installation of additional runway incursion prevention systems such as Runway Status Lights.



ASDE-X Implementation at LAX

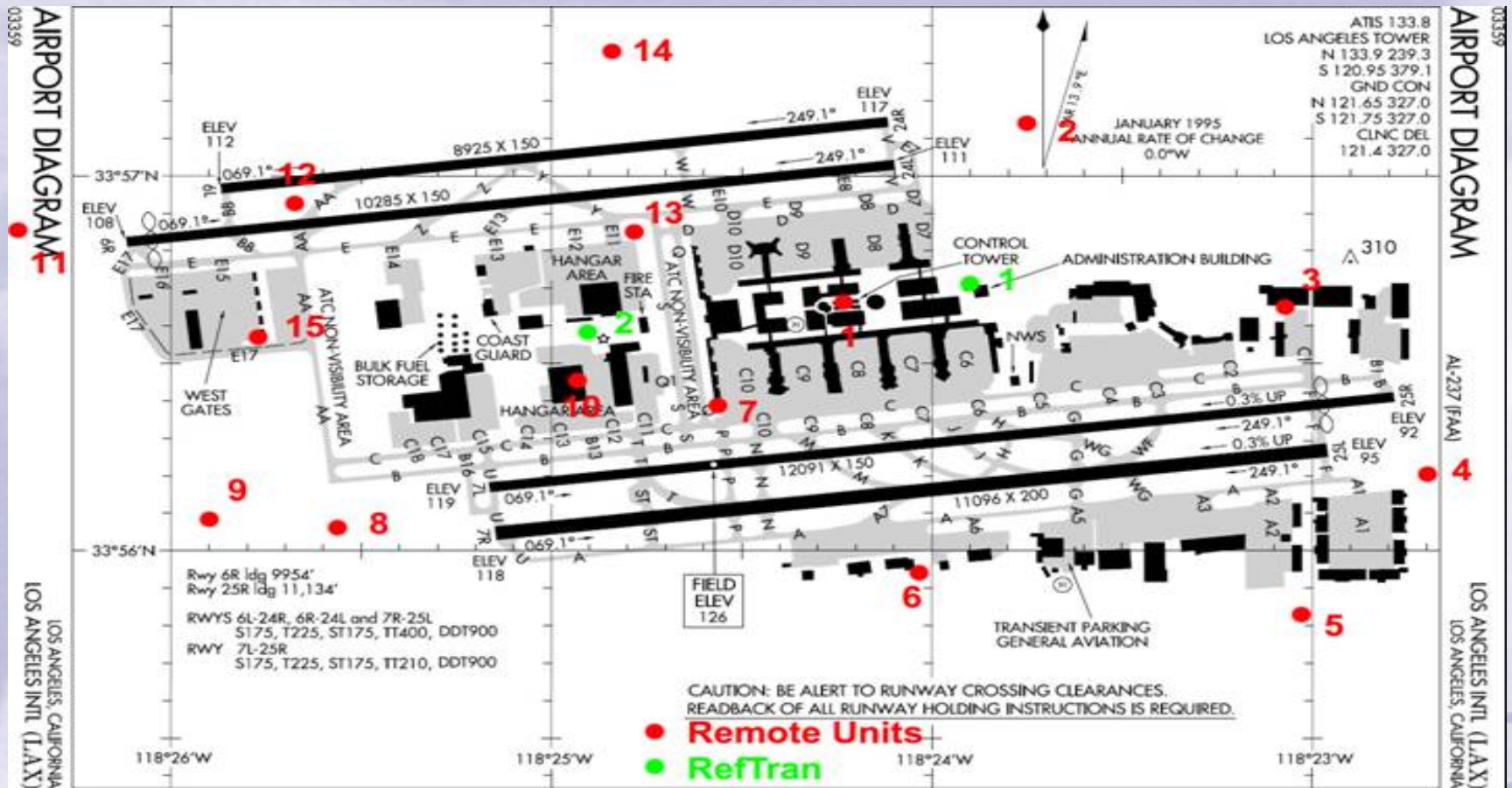
Remote Unit



Reference Transmitter



ASDE-X Implementation at LAX



ASDE-X Implementation at LAX

Implementation Schedule

- Mar 07 - Started site preparation/infrastructure
- Sept 07 - Complete site preparation/infrastructure
- Sept 07 - Delivery and installation of equipment
- Mar 08 - Complete equipment installation
- July 08 - Complete system optimization
- Sept 08 - System Hand-over and Commissioning

Total Project Cost

- \$7.4 million

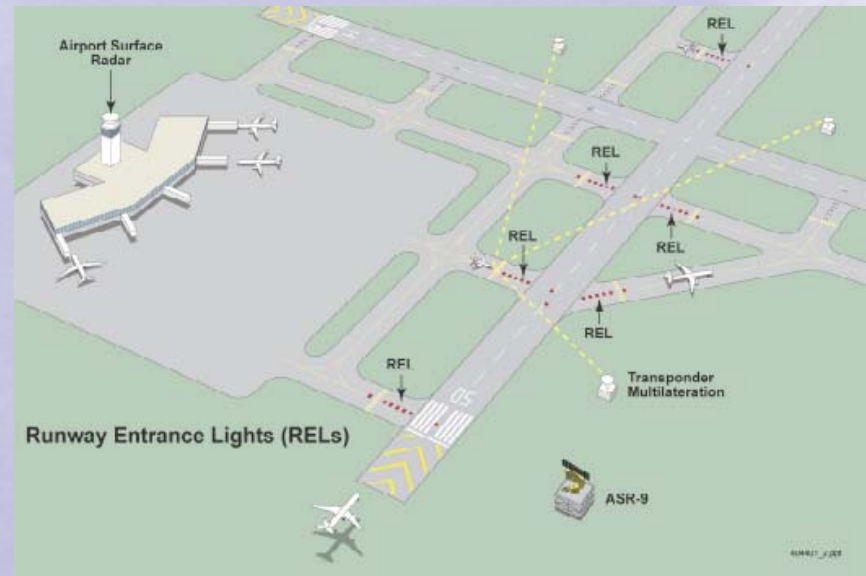
RWSL

(Runway Status Lights)

RWSL at LAX

Program Goals

- Install RWSL test system
- Conduct operational suitability evaluation of RWSL system
- Identify and address technical and operational issues to facilitate future operational deployment



RWSL at LAX

REL's
Runway Entrance Lights



THL's
Taxiway Hold Lights

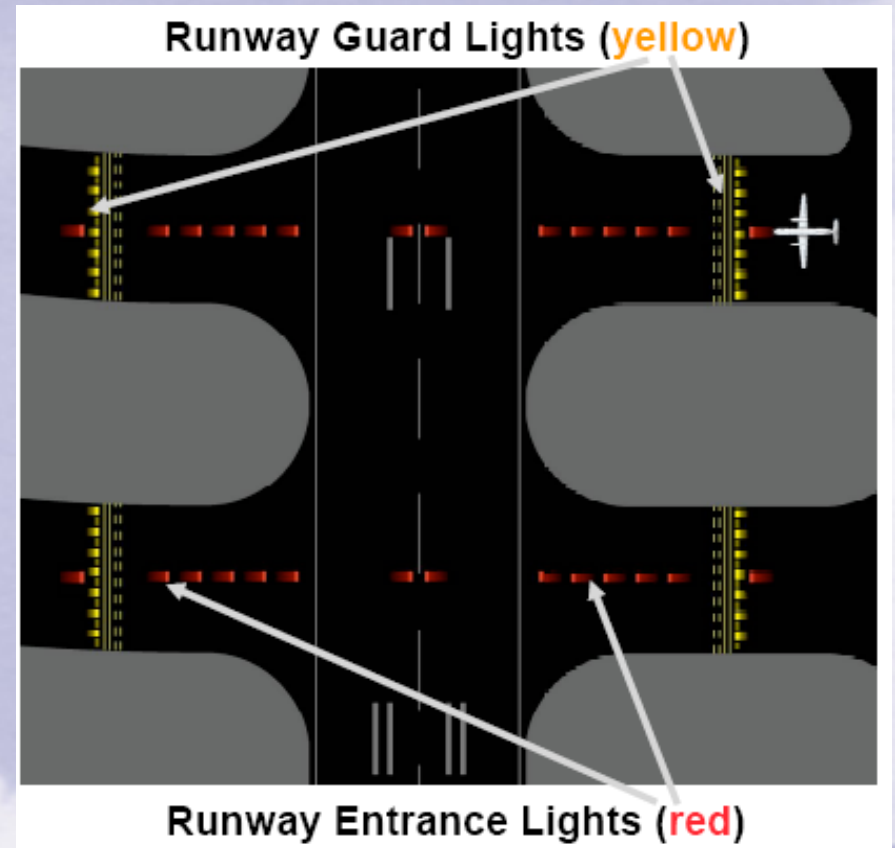


RWSL at LAX

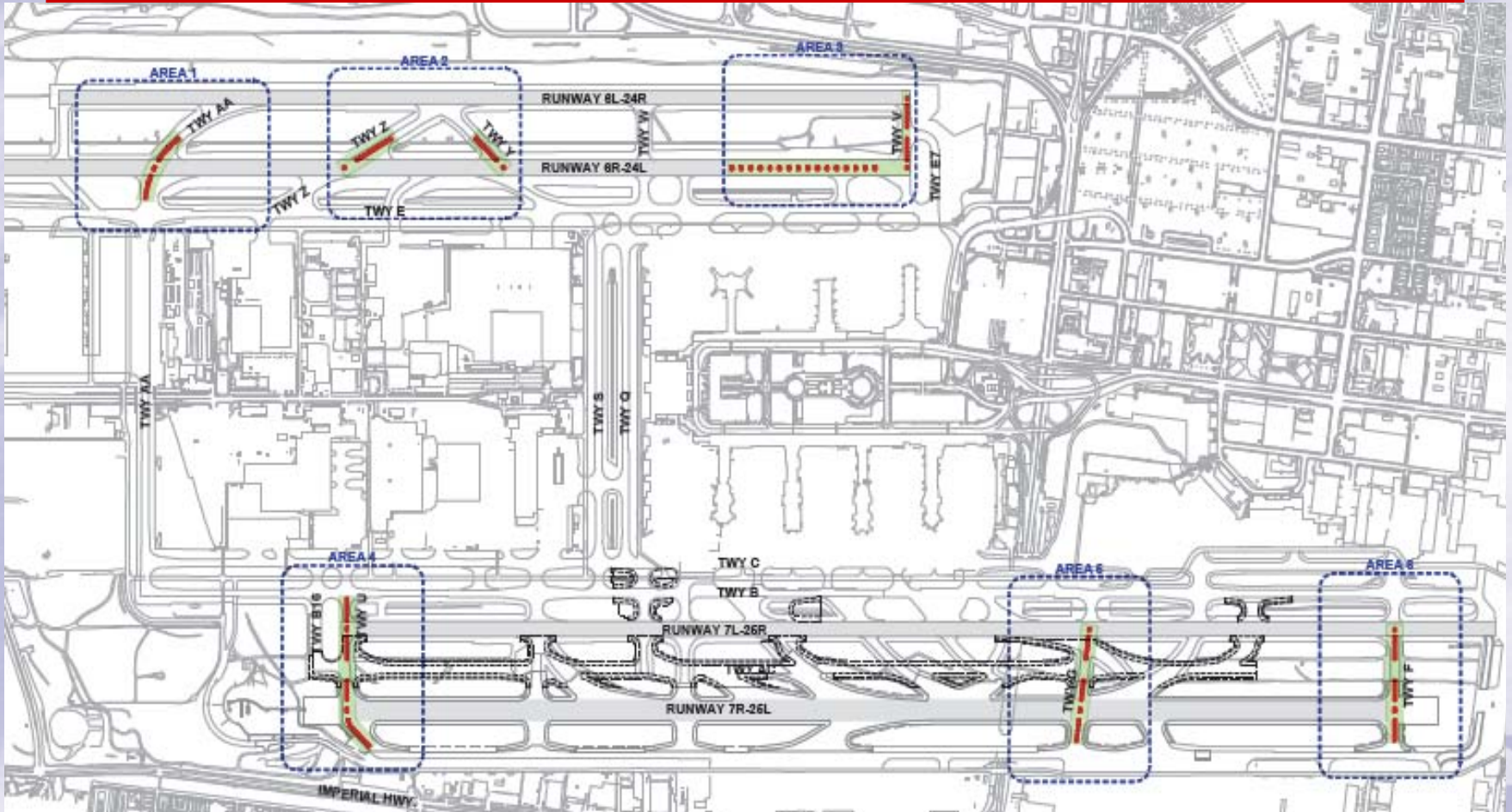
Runway Guard Lights
(RGL's)

vs.

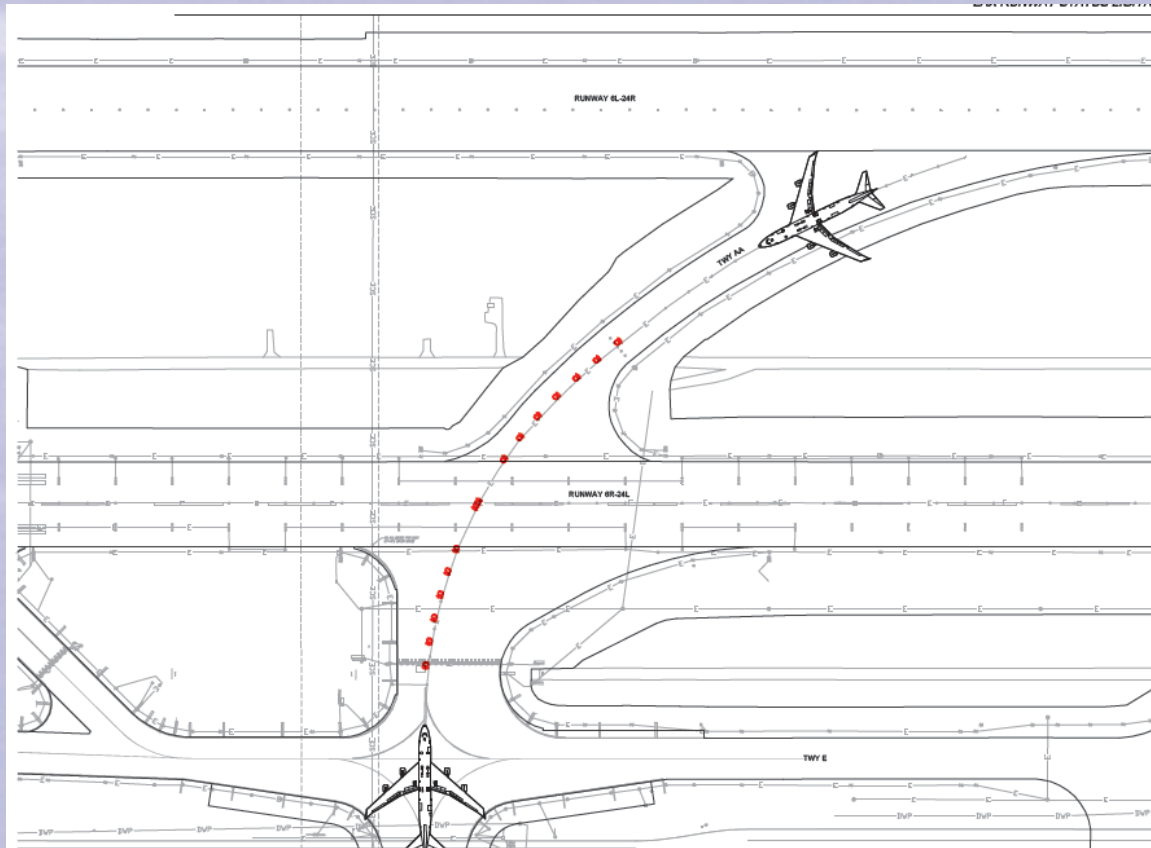
Runway Entrance
Lights (REL's)



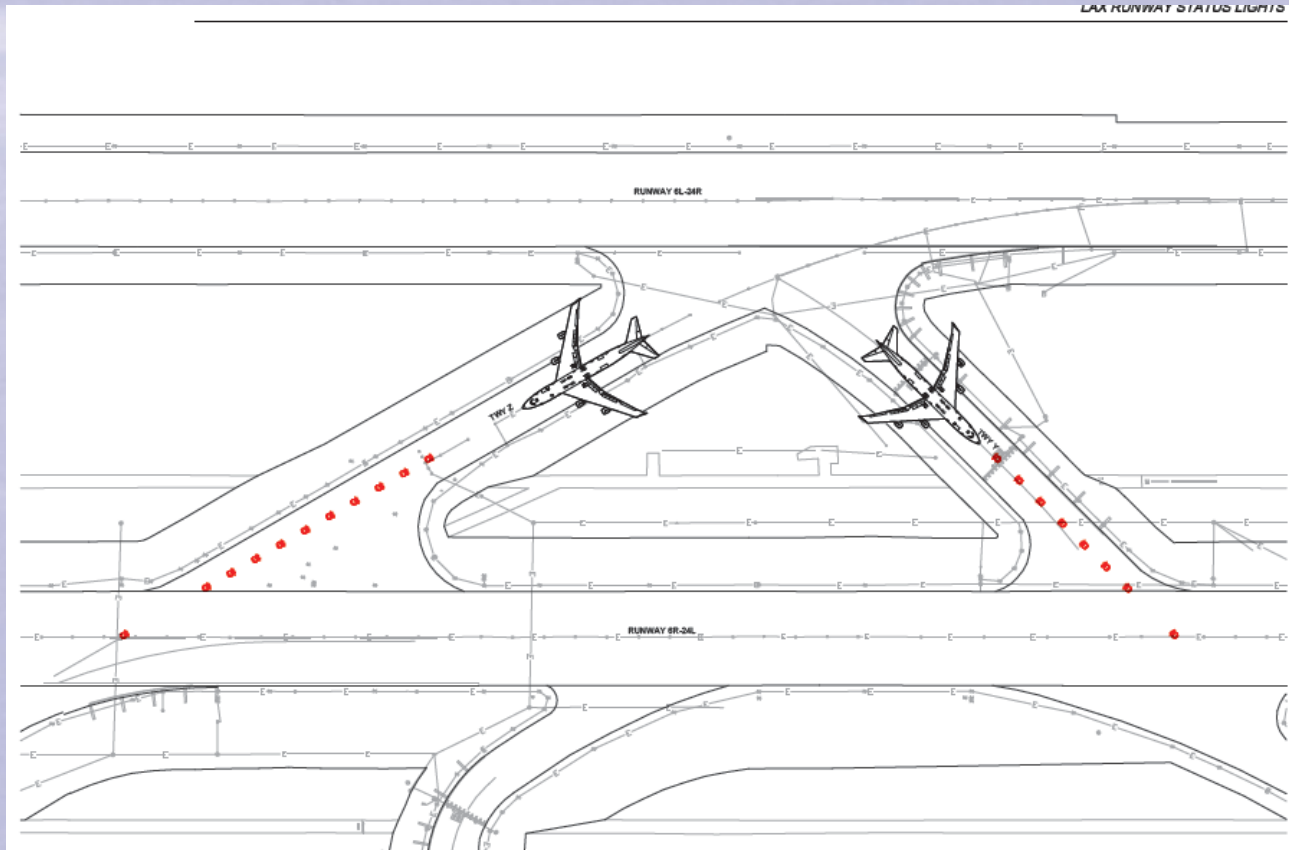
RWSL at LAX



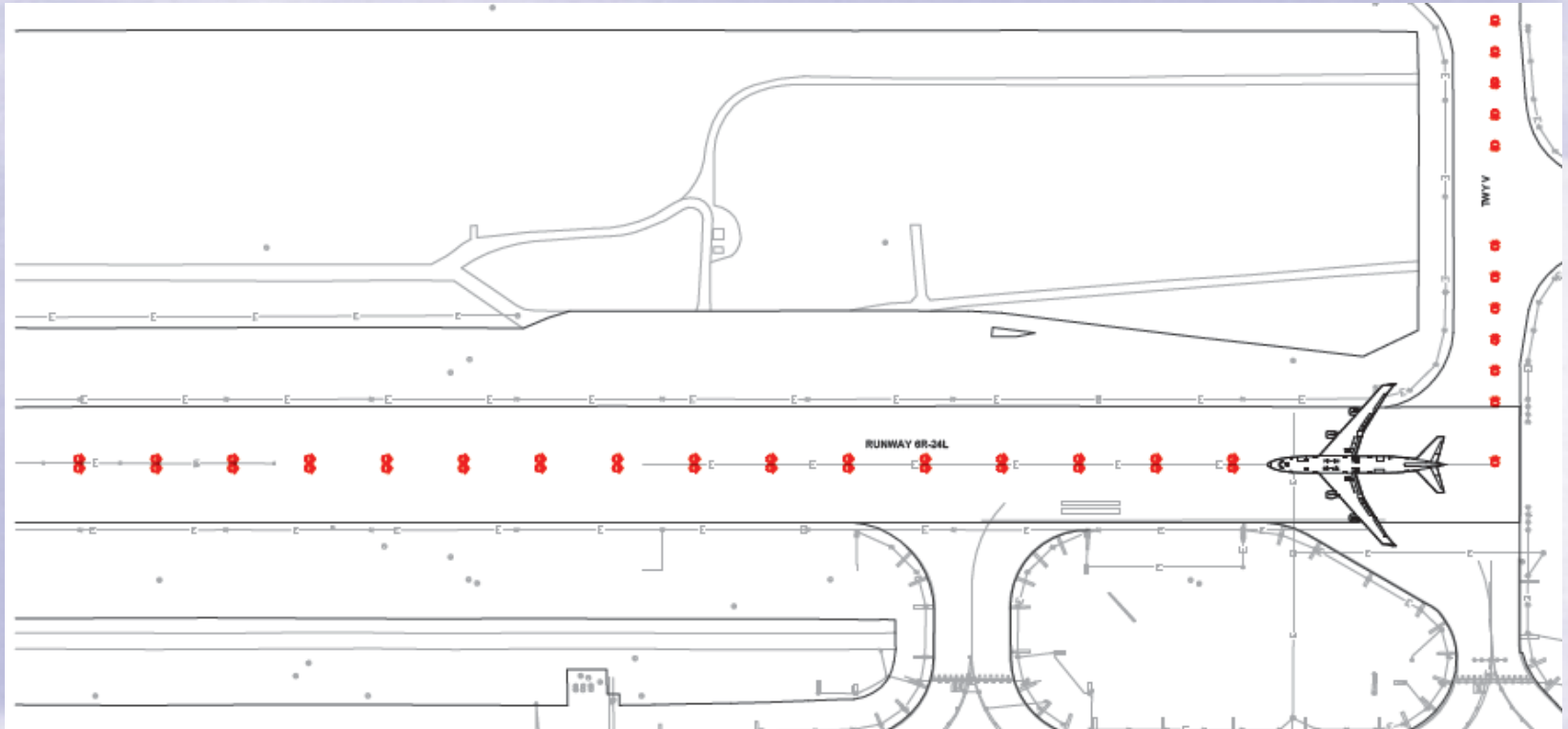
RWSL at LAX



RWSL at LAX



RWSL at LAX



RWSL Implementation at LAX

- Mar 08 - Execution of FAA/LAWA MOA
- Aug 08 - Start LAWA construction
- Aug 08 - Engineering Development Test
- Sept 08 - Shadow Ops Equipment Installation
- **Sept 08 - ASDE-X System Hand-over**
- Nov 08 - Complete LAWA construction
- Jan 09 - FAA Equipment Installation & Integration
- Feb 09 - FAA Flight Checks
- Jan 09 - RWSL Operational Evaluation Start

Total Project Cost

- \$7.7 million